

ENGINEERED FOR good

EPSON

EPSON SEA SUSTAINABILITY REPORT EXECUTIVE SUMMARY FY2024

Steeped in Heritage.
Advancing into a Sustainable Future.



Executive Summary

Epson’s FY24 Southeast Asia Sustainability Report, developed with reference to the Global Reporting Initiative (GRI) 2021 standards, highlights our progress in reducing environmental impact and driving positive change in communities. Guided by our principles of sho-sho-sei (efficient, compact, precise) and aligned with our Environmental Vision 2050, we achieved key milestones in sustainability, including stronger operational results, expanded emissions tracking, and high-impact community initiatives. Building on a regional data-centric approach established in FY23, this report showcases our commitment and achievements in advancing a more sustainable future.

Achieve Sustainability in a Circular Economy

- **Circularity Initiatives:** Epson SEA promotes circularity, recycling 1,613kg of ink consumables and 513kg of food waste into fertiliser.
- **Carbon Emissions Reduction:** Through drop shipping optimisation, Epson SEA avoided 113 tonnes CO2e from FY23 to FY24, representing a 21% increase in avoided emissions year-on-year.
- **Sustainable Infrastructure:** One office achieved BCA Green Mark Gold certification for sustainable practices, with five more targeted for FY25.

Advance the Frontiers of Industry

- **Digitalisation and Automation:** In FY24, 76% of all work processes were completed through digital approvals, reducing paper usage and streamlining operations.
- **Workplace Health and Safety:** Epson SEA maintains a strong safety record with zero workplace incidents.
- **Talent Development and Capability Building:** We’re committed to investing in workforce development, driving for long-term transformation.

Improve Quality of Life

- **Enhanced Learning Environments:** We support quality education by providing schools with projectors and printers, enabling effective access to learning materials.
- **Fostered Future Innovators:** We empower the next generation of innovators through STEM and robotics programmes, equipping them for a digital future.

Fulfil Social Responsibility

- **Environmental Stewardship:** Epson SEA takes action against plastic waste, collecting 1,417kg through clean-ups and NGO partnerships.

Looking Ahead

As we move forward, Epson SEA remains committed to driving sustainability and innovation across the region. Building on the progress made in FY24, we will continue to:

- **Accelerate Circular Economy Initiatives:** Expand our circularity efforts to minimise waste and maximise resource utilisation, while exploring new opportunities for sustainable growth.
- **Enhance Sustainability Performance:** Continue to track and reduce our environmental impact, with a focus on achieving our Environmental Vision 2050 targets.
- **Drive Innovation and Digitalisation:** Leverage digitalisation and automation to drive greater sustainability and operational efficiency.
- **Empower Communities:** Continue to support education and skills development initiatives, while promoting environmental stewardship and sustainable development through partnerships and community engagement.

With a strong foundation in place, we are confident that our sustainability efforts will contribute to a more sustainable future.




Innovation for Impact

With nearly a century of innovation behind us, Epson remains committed to enriching lives and creating a better world. Our products are designed with purpose, undergoing rigorous research and development to ensure they are efficient, compact, and precise. This thoughtful approach eliminates errors and waste, reflecting our dedication to making a positive impact.



Projectors offer
up to 70%
improved energy
efficiency compared
to past models



EcoTank Printers avoided
1.3M tons
of CO₂ emissions from
consumables to date¹




**Oeko-Tex Eco
Passport-
certified inks**
are used in our Textile
printers to meet globally
recognised standards²

PaperLab uses
**Dry Fiber
Technology**
to turn waste paper
into new paper



Business Inkjet
Printers consume
up to 85%
less power than its
predecessor



Robots consume
up to 40%
less power than its
predecessor

For an updated product specifications, please visit <https://corporate.epson/en/sustainability/environment/products/products.html>

¹ Epson estimated CO2 emission savings by comparing ink bottle and cartridge usage up to Dec 2023, based on their own evaluation conditions. Actual emissions may vary depending on customer usage.

² Sustainability and safety standards for the textile printing include OEKO-TEX, Global Organic Textile Standard (GOTS), ECO PASSPORT and bluesign.

Achieve Sustainability in a Circular Economy

This entails initiatives aimed at driving sustainable economic activities by achieving closed-resource-loop systems through effective use of resources such as electricity, energy, and water and reduction in the usage of underground resources to control climate change.

Decarbonisation	Closed Resource-Loop	Responsible Supply Chain	Customer Environmental Impact
<div>11%</div> <div>Reduced electricity usage [YoY from FY23 to FY24]</div>	<div>100%</div> <div>Single-Use Plastic Phase-Out</div>	<div>100%</div> <div>New suppliers evaluated</div>	<div>100%</div> <div>Completion of sustainability e-learning module</div>
<div>14,747 kWh</div> <div>Average monthly electricity savings in Epson Thailand after green premises location</div>	<div>1,626 kg</div> <div>Collection of ink consumables by Epson Singapore, Thailand and Malaysia</div>		
<div>113 tCO2e</div> <div>Drop shipping optimisation [avoided from FY23 to FY24]</div>	<div>513 kg</div> <div>Food recycled into fertiliser by Epson Indonesia and Thailand</div>		
<div>6,589 kWh</div> <div>Solar power generated</div>	<div>130 tons</div> <div>E-waste collection by Epson Singapore</div>		

Advance the Frontiers of Industry

This entails initiatives aimed at transforming conventional processes to contribute to the resolution of social issues. Converting manufacturing processes from analogue techniques to digital, for example, is intended to help improve environmental pollution, labour, and other issues.

Digitalisation and Automation

76%

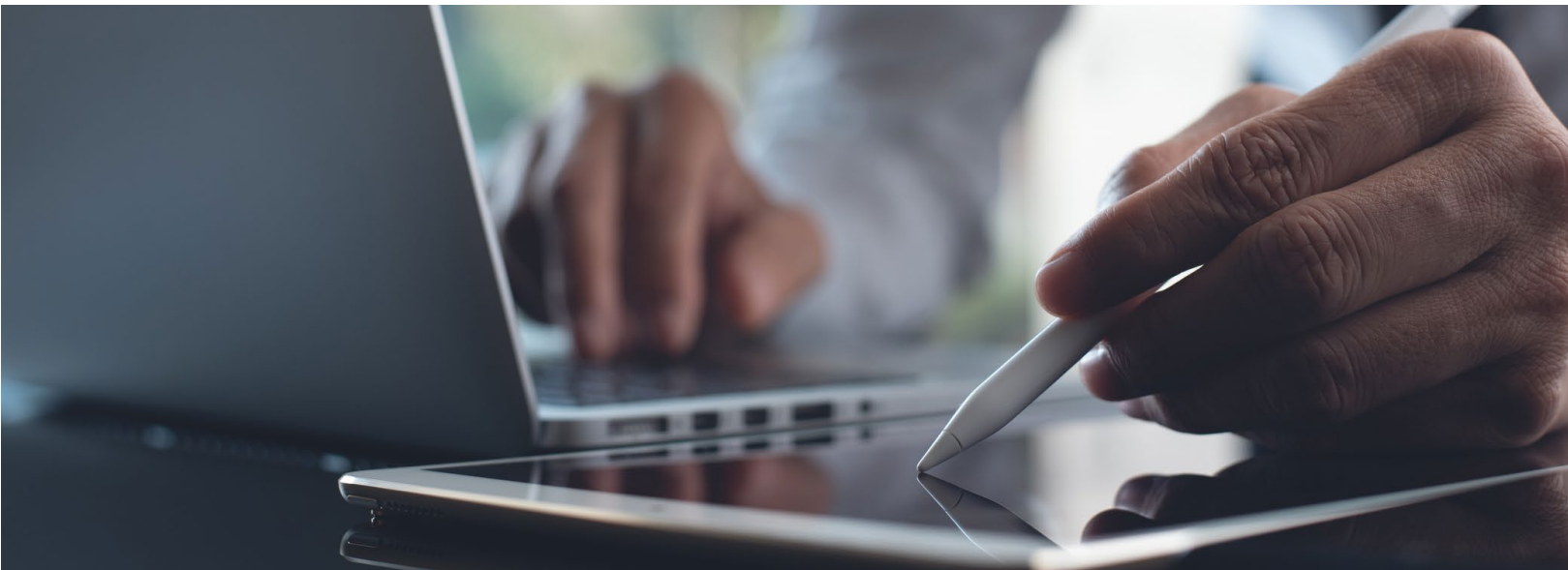
of workflows achieved digital approval efficiency

53%

of servers have been migrated to AWS cloud-based environment

11%

reduction in paper purchased from FY23



Improving the Working Environment

224

self-paced upskilling learning courses

28

employees attended ISO45001 Internal Auditor Training

21 Hours

of training on average per employee



Strengthening Governance

100%

of Epson SEA employees attended compliance training



Improve Quality of Life

This entails making meaningful contributions to people's health and well-being, empowering them to live healthy lives. Through education, we'll support personal growth and maturity. At Epson, we will offer diverse products and services that enable people to choose vibrant lifestyles, promoting initiatives that enrich their lives with abundance and colour.

Supporting Different Learning Environments: From Our Educators

Epson empower educators to create immersive learning experiences with interactive features like multi-touch, wireless connectivity and ultra-short throw projection.



Supporting Different Learning Environments: Epson Goes to School

Epson's "Epson Goes to School" initiative donated 98 eco-friendly L3216 printers to schools in 10 regions across Indonesia to enhance learning infrastructure and promote energy-efficient printing technology.



Driving Change Through Innovation

Epson sponsored a robot competition in Padang, Indonesia, supporting STEM education and showcasing students' robotics talent. This event aligns with our vision of leveraging technology for positive change, fostering innovation and community engagement in the region.



Fulfil Our Social Responsibility

Epson is dedicated to fulfilling its corporate responsibility to achieve sustainability and enrich communities. This commitment encompasses initiatives that meet societal expectations, including stakeholder engagement, responsible sourcing and supplier management, respect for human rights, diversity promotion, and business continuity planning.

Human Rights & Diversity

Gender

Workforce

- 47% female
- 53% male

Age

Workforce

- 11% | Below 30
- 75% | Between 30 - 50
- 14% | Above 50

Representation in Senior Management

- 56% male employees
- 44% female employees



Sustainability for Our Future

Advocating for Plastic Reduction

- 1,417kg waste recovered
- 791kg plastic and foam recovered



“Trees for Life” Community-Based Forest Tree Planting with WWF

- 200,000 trees planted
- 300 hectares covered
- 300 families involved

Stakeholders’ Sustainability Outreach and Education Seminars

- 28 stakeholder seminars conducted
- 1,116 visitors attended
- Held in 6 countries



Numbers on this page are rounded to whole numbers for simplicity

EPSON