

GREATER RELIABILITY WITH EFFORTLESS FILE MANAGEMENT.



The WorkForce DS-520 is designed with a high daily duty cycle of 3,000 pages for enhanced scanning reliability. Increase your productivity with its high-speed duplex scanning as well as the ability to scan and automatically stitch folded A3 documents in one-pass. Together with its easy file management software, the DS-520 is your ideal compact scanning solution.



Scan
Up to A3



Speed Up
to 60 ipm



OCR



One-pass
Duplex
Scanning



Ethernet*



ENGINEERED FOR BUSINESS

High Durability

Equipped with a separation roller which allows stable continuous scanning for high volume scanning of up to 3,000 pages a day.

A3 Scanning Without Carrier Sheet

A3 documents folded in half can be scanned in one pass without a carrier sheet and automatically stitched back into A3 size.

Easy File Management

Document Capture Pro software allows easy management and sharing of scanned documents, including options for scan-to-email and scan-to-cloud.



*Optional Network Interface Unit required for Ethernet connection

The WorkForce DS-520 delivers superb reliability and scanning performance, all in a highly compact package. Its high daily duty cycle of 3,000 pages ensures trouble-free, high volume scanning while the one-pass duplex scanning comes with the ability to scan folded A3 documents with auto-stitching. The optional network support allows the DS-520 to be easily shared across your workgroup among multiple users.

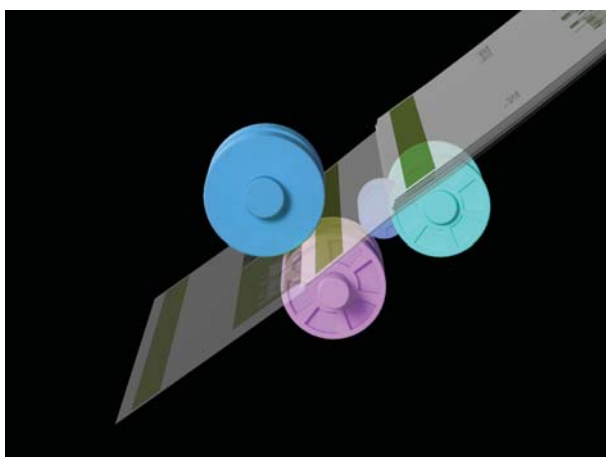


High Reliability & Durability

The DS-520 scanner is designed to deliver a high daily duty cycle of 3,000 pages, and it comes with two key technologies that provide the reliability and durability needed by businesses:

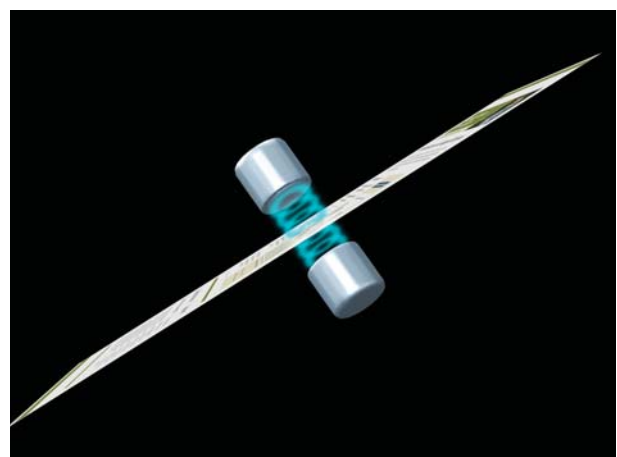
Separation Roller

This device reliably separates and feeds each page into the scanner, ensuring stable and continuous scanning for large batch requirements.



Ultrasonic Double Feed Detection

This in-built detector ensures that every page is scanned by sensing if more than a single page has been accidentally fed into the scanner. In this occurrence, it will alert the user to rectify the issue before continuing.



A3 Scanning Without Carrier Sheet

A3 size documents can now be scanned without a carrier sheet. Simply switch the scanner to non-separation mode, and with the automatic stitching function in Epson Scan, both halves of the image will be reproduced as an entire image.



Easy File Management

The DS-520 comes bundled with professional software that allows you to easily manage your scanned files.

Document Capture Software*



Easily scan, view, edit, save and transfer scanned documents. It can optically recognise barcodes, characters and blank pages in scanned documents to separate sections into different folders.

The software provides quick access to post-scan destinations, including scan-to-print, email, Windows™ Public Folder, FTP, Web Folder, and Scan-to-Cloud services such as Microsoft® SharePoint Server, Evernote®, Google® Drive™ and SugarSync. Document Capture Pro (for Windows) allows assigning of up to 30 customisable jobs to the Network Interface Unit for push scanning.

* Document Capture Pro (Windows), Document Capture (Mac OS X)

Presto! BizCard 5

Presto! BizCard is a business card management application which helps you convert important information on business cards via OCR and imports the data into a digital database.

Epson OCR Component

This OCR add-on allows you to create searchable PDF files, automatically straighten and orientate your documents based on character recognition.

High Speed Duplex Scanning

The DS-520 utilises LED technology and is always ready with zero warm up time. Coupled with its high capacity 50-sheet Automatic Document Feeder, it performs speedily at 30ppm/60ipm at 300dpi for both colour and monochrome, resulting in significant improvements in office productivity.

Optional Network Support

With the optional Network Interface Unit connected through its USB port, the DS-520 scanner can be shared with multiple users across your network.



Users with Document Capture Pro (for Windows) can assign up to 30 customisable jobs to the Network Interface Unit for push scanning.

Automatic Size Recognition

Place documents of different sizes ranging from A6 to Legal in the middle of the feeding tray and the DS-520 will automatically detect and scan everything in the correct size, all in a single batch.



ISIS Driver Support

DS-520 comes with support for the web-downloadable, open standard ISIS driver, allowing quick and easy integration with existing ISIS users.

Powerful and Comprehensive Epson Scan Features

The Epson Scan suite of functions includes numerous useful and innovative capabilities including the following highlights:

PDF/A-1b (ISO) Compliant Files

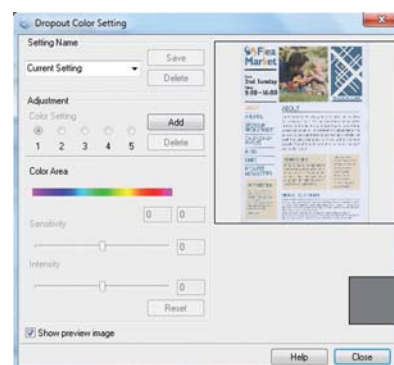
Archive your digital documents for long term storage and visual reproduction with embedded fonts.

Power Off Timer Setting

Save power consumption by programming the scanner to Power Off after being idle for a set time.

Colour Enhancement & Colour Dropout

Remove or enhance the visibility of ink signatures such as "Confidential" and "Urgent" stamps. Users can pick one of the preset colours (red, green, blue, pink, purple, yellow, orange, or all colours except black), or use the customised settings to dropout or enhance up to 5 colours of your choice with a single scan.



PARTNERS IN PERFECTION



Epson Ink Tank System L300 & L350

The L300 and L350 ink tank system printers offer superb printing quality, speed and choice of business features with the world's lowest printing cost*.

*As at 28 August 2012, the Epson L Series offers users the world's lowest cost per page for any printer using genuine branded supplies from its own maker.



Epson EB-4750W Projector

The EB-4750W delivers brilliant widescreen presentations with incredible image quality and reliability at 4,200 lumens for both Colour Brightness and White Brightness.

MODEL NUMBER	DS-520		
Scanner Type	A4 sheet-fed, one-pass duplex colour scanner		
Sensor	Contact Image Scanner (CIS)		
Light Source	RGB LED		
Optical Resolution*1	600 x 600 dpi		
Output Resolution	75 – 1,200 dpi (in 1 dpi increments)		
Min. Document Size	52.0 x 50.8mm (2.05" x 2.00")		
Max. Document Size	215.9 x 914.4mm (8.5" x 36")		
Supported Paper Weight	50 – 209g/m ²		
ADF Capacity	50 sheets (80g/m ²)		
Scanning Speed*2	Colour (24-bit)	Grey (8-bit)	Mono (1-bit)
Resolution	Simplex / Duplex	Simplex / Duplex	Simplex / Duplex
200dpi	30ppm / 60ipm	30ppm / 60ipm	30ppm / 60ipm
300dpi	30ppm / 60ipm	30ppm / 60ipm	30ppm / 60ipm
600dpi	7ppm / 14ipm	22ppm / 44ipm	22ppm / 44ipm
Daily Scan Volume	3,000 pages / day		
Multi-Feed Detection	Ultrasonic Sensor		
Driver	Epson Scan TWAIN Driver, ISIS Driver		
Interface	USB 2.0 Hi-Speed, Ethernet (with optional Network Interface Unit)		
Supported Platforms			
Epson Scan Twain Driver	Windows XP/Vista/7/8/8.1/Server 2003/Server 2008/Server 2012		
	Mac OS X 10.6.X or later		
ISIS Driver	Windows XP/Vista/7/8/8.1		
Electrical Specifications			
Rated Voltage	AC100 – 240V		
Rated Frequency	50 – 60Hz		
Power Consumption			
Operating	18W		
Ready	7W		
Sleep	1.6W		
Off	0.4W		
Environmental Conditions			
Temperature			
Operating	5 – 35°C		
Storage	-25 – 60°C		
Humidity			
Operating	10 – 80% (No condensation)		
Storage	10 – 85% (No condensation)		
Driver and Bundled Software			
	Epson Scan V5.3		
	ISIS Driver (Web Download)		
	Document Capture Pro (Win) / Document Capture (Mac)		
	Epson OCR Component (Windows Only)		
	Presto! BizCard 5		
Options / Consumables	Order Code	Durability	
Network Interface Unit	B12B808461	-	
Roller Assembly Kit	B12B813561	100,000 scans	
Carrier Sheet	B12B813431	3,000 scans	

Dimensions & Weight

DS-520
Weight: 2.59kg (5.7lb)



*1 Scanning resolution as defined by ISO14473.

*2 Based on A4 sized scans.



© 2014 Epson Singapore Pte Ltd. All Rights Reserved. Reproduction in part or in whole, without the written permission from Epson, is strictly prohibited. EPSON and EXCEED YOUR VISION are registered trademarks of Seiko Epson Corporation. All other products names and other company names used herein are for identification purposes only and are the trademarks or registered trademarks of their respective owners. Epson disclaims any and all rights in those marks. Print samples shown are simulations only. Specifications and product availability are subject to change without notice and may vary between countries. Please check with local Epson offices for more information.

Information correct as at October 2014