



THE DEFINITION OF DIGITAL CLARITY.

If you want superb scans from your photos or films, look no further than Epson Perfection V800 Photo. Boasting up to 6400 dpi with Optical Density of 4.0 Dmax for film scanning and enhanced by an energy-efficient ReadyScan LED technology, you can expect images refined in brilliant resolutions, with zero warm-up time. Its selection of film holders also gives you the flexibility to use most film formats. Make the right choice with V800 Photo, and discover a world of detailed precision.



Scan
6400 dpi*



4.0 Dmax



Film
Scanning



Scan up
to A4



LED



Environmentally
Friendly

IT'S IN THE DETAILS.

Proven Dual Lens System

Quality scans of up to 4800 dpi for reflective scanning and 6400 dpi with Optical Density of 4.0 Dmax for film scanning.

Versatile Film Support

New film holders to support multiple formats with 5 height adjustments and Anti-Newton Ring glass for sharp scans.

Zero Warm-up Time

Reduce waiting time and energy consumption with ReadyScan LED.



Discover quality and versatility with excellent scans of up to 6400 dpi with Optical Density of 4.0 Dmax for film scanning. The V800 comes equipped with four height-adjustable film holders to support a variety of film formats, and also features zero warm-up time, enabled by its ReadyScan LED light source.



Proven Dual Lens System

Bring out exquisite quality from your photo or film with the Dual Lens System, capable of resolutions up to 6400 dpi* with an Optical Density of 4.0 Dmax for film scanning and 4800 dpi for reflective scanning. Combined with Epson Matrix CCD™, you can enjoy brilliant details from your scans, making it perfect for your work or hobby.



Versatile Film Support

Equipped with film holders for 35mm strip film or mounted film, 6 x 20cm medium format film, 4" x 5" large format film and a film area guide for scanning up to 8" x 10" transparency, experience versatility and ease in your scans.

The new film holders are equipped with Anti-Newton Ring glass** to maintain film flatness and have up to 5 height adjustment levels to achieve the sharpest scans.



35mm Strip

35mm Mounted

6 x 20cm Medium Format

4" x 5" Large Format

Film Area Guide

*Film scanning with film holder only.

**Except for the 35mm mounted film holder.

Zero Warm-up Time

The Perfection V800 Photo is equipped with energy-saving and eco-friendly ReadyScan LED light sources that require zero warm-up time, providing hyper-responsive scanning. The V800 has a power-saving sleep mode that reduces energy consumption even further.

Designed for Greater Productivity

Push the limits of your editing potential with a software bundle of scanning and imaging tools that let you create the images you want.

Epson Copy Utility

Copy photos and documents easily without a copy machine or an all-in-one printer. Epson Copy Utility easily combines your Epson Scanner and Printer into a copy machine.

Epson Event Manager

Make regular scan jobs easier by creating ten customisable jobs. Users can also assign a job to the scanner button for one touch scanning.

LaserSoft SilverFast® SE 8

This professional scan and imaging software includes functions like dust and scratch reduction and noise elimination for professional results.



Epson Scan

The Epson Scan driver provides a user-friendly software interface that caters to your every need. A fully automatic scanning function gets new users off and running and professionals will enjoy the suite of advanced tools to get the best scan results.

Colour Restoration

Restore the original colours of faded photos to make them look as good as new again.



Backlight Correction

Reduce interference from background light by correcting shadows, creating a clearer and sharper image.

DIGITAL ICE™

This image restoration solution uses a unique combination of hardware and software to correct image defects.

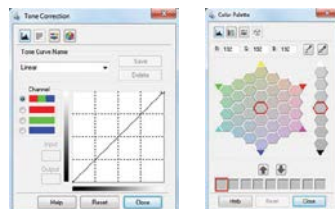
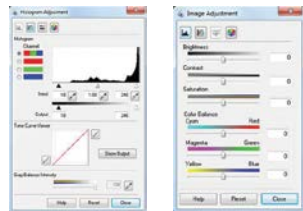
DIGITAL ICE for Film: the scanner uses an infrared light source to detect dust and scratches on the surface of the film. In a multi-pass process, the dust and scratches are mapped out and carefully removed from the scanned image, leaving the composition and quality intact.

DIGITAL ICE for Prints: the scanner uses two lamps at different angles to detect tears, folds and creases on prints and corrects the scanned image accordingly.



Advanced Image Adjustment Tools

Tap upon a host of advanced tools to achieve the best results.



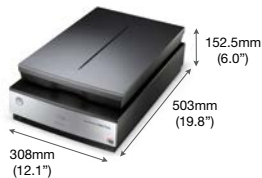
SPECIFICATIONS
PERFECTION™ V800 PHOTO

EPSON
 EXCEED YOUR VISION

MODEL NUMBER		V800
Basic		
Scanner Type		Flatbed colour image scanner
Optical Resolution *1		Main 6400 dpi x Sub 9600 dpi (Film Scanning with Film Holder) Main 4800 dpi x Sub 9600 dpi (Reflective and Contact Sheet Scanning)
Optical Density		4.0 Dmax
Document Size		
	Reflective	Up to 216 x 297 mm
	Transparency	Up to 203 x 254 mm
		35mm x 18 frames strip film
		35mm x 12 frames mounted film
		(6 x 20cm) x 1 frame Medium format
		(4" x 5") x 1 frame,
		Up to 8" x 10" (with film area guide)
Interface		Hi-Speed USB 2.0
Configuration		
Photoelectric Device		Epson Matrix CCD™ (6 line colour CCD with On Chip Micro Lens) 40,800 x 56,160 pixels (4800 dpi) 37,760 x 62,336 pixels (6400 dpi)
Light Source		White LED
Sub-Scanning Method		Fixed document and moving carriage
Performance		
Output Resolution *2		25 to 12,800 dpi (in 1 dpi increments)
Pixel Depth		16 bits/pixel (Input 16 bits/pixel, Output 16 bits/pixel)
Scanning Speed		
Reflective Scanning (Speed Mode) *3		DPI Speed
	Preview	6 sec
	Monochrome	300 12 sec
	24-bit Colour	300 12 sec
Film Scanning (Quality Mode)		DPI Speed
	35mm Positive Film	2400 40 sec
		4800 70 sec
		6400 91 sec
	35mm Negative Film	2400 37 sec
		4800 67 sec
		6400 89 sec
Functions		
Driver and Bundled Software		Epson Scan V3.9 Epson Event Manager (Win / Mac) Epson Copy Utility SilverFast SE 8 (Win / Mac)
Supported Platforms		Microsoft Windows XP / Vista / 7 / 8 / 8.1 / 10 Mac OS X 10.6.8 or later
Environmental Conditions		
Temperature	Operating	5 - 35°C
	Storage	-25 - 60°C
Humidity	Operating	10 - 80% (No Condensation)
	Storage	10 - 85% (No Condensation)
Electrical Specifications		
Rated Voltage		AC 220-240 V
Rated Frequency		50 - 60Hz
Power Consumption	Operating	23W
	Ready	12W
	Sleep	1.5W
	Power Off	0.3W

Dimensions & Weight
V800

Weight: 6.6kg (14.6lb)



*1 Optical Resolution as defined by ISO 14473.

*2 With interpolation, scanning area may be restricted if resolution setting is large.

*3 Scanning Speed Data Patterns.
The thumbnail images below show the scanning patterns used to determine scanning speed specifications.



Photo A4

Scanning speed test results vary according to system configuration, dpi setting, and scan mode setting. However, documents and photos other than those pictured above can be substituted without significantly affecting test results.

© 2019 Epson Singapore Pte Ltd. All Rights Reserved. Reproduction in part or in whole, without the written permission from Epson, is strictly prohibited. EPSON and EXCEED YOUR VISION are registered trademarks of Seiko Epson Corporation. All other products names and other company names used herein are for identification purposes only and are the trademarks or registered trademarks of their respective owners. Epson disclaims any and all rights in those marks. Print samples shown are simulations only. Specifications and product availability are subject to change without notice and may vary between countries. Please check with local Epson offices for more information.

Information correct as at June 2019