

EMPOWERING BUSINESSES WITH EXCEPTIONAL PERFORMANCE



The WorkForce DS-730N simplifies and enhances business workflow with higher scan speed performance and easier access to scan settings through the 1.44" LCD display. Users can scan to Network folder, email or send scan data to target destination without the use of a PC. In addition, the image sensor glass dirt detection reduces re-scanning due to bad image quality, improving workflow.



Speeds of
up to 80 ipm



Colour
LCD



One-Pass
Duplex
Scanning



Ethernet



USB 2.0
Bus-powered

Built for Business

Enjoy scan speed of up to 80 ipm, daily duty cycle of 4,500 sheets and ADF capacity of 100 sheets to enhance business productivity.

Efficient Scanning

Work becomes seamless with easy access to scan settings on the 1.44" LCD display. Scan to Network folder, email or SharePoint with the Quick Send Button easily.

Exceptional Reliability

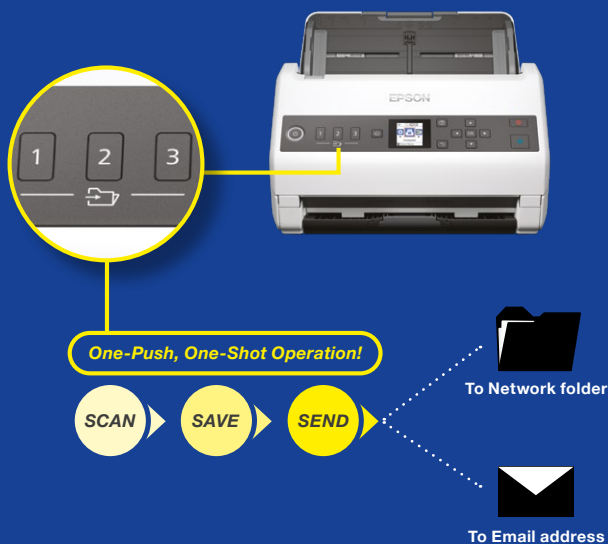
Expect quality scans with the image sensor glass dirt detection and prevent damage to your important documents with the paper protection feature.



Equipped with the Scan-to function, users can send scan data to target destination without the use of a PC. With the one-push Quick send button, users can scan-save-send easily to ease workflow. In addition, the image sensor glass dirt detection helps detect, notify and reduce the hassle of re-scanning.

Scan-to Function

With the convenience of the Scan-to function, users only require the one-push, one-shot operation of the quick send button to send scan data directly to target destination, without the use of a PC.



Scanner Features

Durable, High-speed Scanning

Expect fast, high-volume scanning speeds of up to 40 ppm/80 ipm on the DS-730N. With a 100-sheet Automatic Document Feeder for A4 media and high daily output cycle of up to 4,500 pages, this business scanner suits your need.

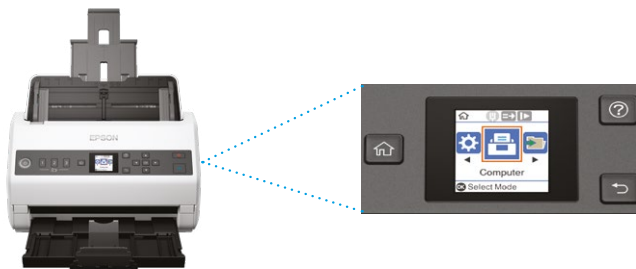
Compact Size

For better mobility and reduced footprint, the DS-730N can be kept in storage position after use.



1.44" Colour LCD

Enjoy a clear display of job contents with the 1.44" LCD display. Access the scanner using push scan functions and change scan settings directly on the panel without having to use a PC.



DS-730N

1.44" Colour LCD

High Quality Image

Equipped with built-in function to improve colour production, the scanner can remove crease marks, reduce bleed through and even select background colour based on paper type used.

Automatic Size Recognition

Place documents of different sizes up to A4 in the middle of the feeding tray and the DS-730N will automatically detect and scan everything in the correct size, all in a single batch.



Epson Scan 2

Text Enhancement

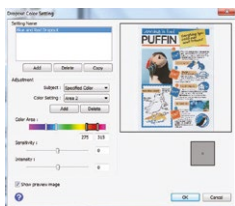
Improves text recognition when scanning text documents, whether in colour, greyscale or black-and-white. Removes background for better clarity, making double-sided printed documents clearer.

Document Skew Correction

Automatically adjusts and straightens scanned images.

Colour Enhancement & Colour Dropout

Remove or enhance the visibility of ink signatures such as "Confidential" and "Urgent" stamps. Users can pick one of the preset colours (red, green, blue, pink, purple, yellow, orange, or all other colours except black), or use the customised settings to dropout or enhance up to 5 colours with a single scan. Up to 10 colours can be preset for reuse.



PDF Features for Added Convenience

The built-in OCR enables searchable PDF files. Secure your PDF files by setting a password to prevent unauthorised viewing, editing or printing.

Epson ScanWay –

Easy and Fuss-Free Data Sharing

ScanWay supports network sharing functions, as well as stand-alone operation without needing to connect to a PC. Epson's ScanWay models provide simple, reliable, and secure scanning solutions for scanner operators and administrators.

With DS-730N:

- Scan documents straight to Network folders and E-mail.
- Facilitate more efficient scan workflow using Quick send buttons.



User-Friendly Feature

Paper Protection Function

Upon detection of abnormal paper feeding or stapled/folded paper, scanner will automatically stop to prevent damage to important documents.



Competitor

Epson

Image Sensor Glass Dirt Detection

A notification will be sent upon detection of dirt in three areas before scanning. This reduces the risk of re-scanning due to bad image quality, improves the Scan-to workflow and increases business productivity.



Document Management

Document Capture PRO*

Scan, view, edit, save and transfer scanned documents easily with the Document Capture PRO, which easily recognises barcodes, characters and blank pages in scanned documents for batch separation, allowing you to create up to 30 customised settings. Simplify scan workflow with assigned shortcuts to the scanner's operation panel. With built-in OCR capability, searchable PDF files can be created and documents saved into editable Microsoft Office formats. Assign passwords to protect devices and documents through the Advanced Log function.



*Limited functionality for Mac version of Document Capture software.

SPECIFICATIONS

| | | |
|------------------------------------|---|-------------------|
| Model Number | DS-730N | |
| Scanner | | |
| Scanner Type | Sheet-fed, one pass duplex colour scanner | |
| Sensor Type | Colour Contact Image Sensor (CIS) x 2 | |
| Scanning Method | Fixed carriage and moving document | |
| Light Source | RGB LED x 2 | |
| Optical Resolution ¹ | 600 x 600 dpi | |
| Output Resolution | 50 - 1,200 dpi (in 1 dpi increments) | |
| Bit Depth | | |
| Colour | 30-bit input, 24-bit output | |
| Greyscale | 10-bit input, 8-bit output | |
| Black & White | 10-bit input, 1-bit output | |
| Document Size | | |
| Minimum | 50.8 x 50.8 mm | |
| Maximum | 215.9 x 6096 mm | |
| Supported Paper Weight | 27 - 413 g/m ² | |
| ADF Capacity | 100 sheets (80 g/m ²) | |
| Daily Scan Volume | Up to 4,500 sheets / day | |
| Multi-feed Detection | Ultrasonic Sensor and Length Detection | |
| Interface | USB2.0 and Ethernet (1000BASE-T/100BASE-TX/10BASE-T) | |
| Scan-to Destination | Folder, Email, FTP/SFTP, SharePoint | |
| Scanning Speed² | | |
| Resolution (A4, Colour/Monochrome) | | |
| 300 dpi | 40 ppm / 80 ipm | |
| 600 dpi | 12 ppm / 24 ipm | |
| Drivers and Software | | |
| Supported OS (Scanner Driver) | | |
| Windows | Windows XP SP3 / Vista / 7 / 8 / 8.1 / 10 / Server 2003 / Server 2008 / Server 2012 / Server 2016 / Server 2019 | |
| Mac | Mac OS X 10.6.8 or later | |
| Driver Compatibility | TWAIN, SANE, WIA, ICA, ISIS | |
| Software Bundle | Epson Scan 2 Epson Scan OCR Component Epson Scan PDF Extensions Document Capture Pro (Windows) Document Capture (Mac) | |
| Software Solutions Compatibility | Document Capture Pro Server Epson Device Admin | |
| File Format | Standalone: JPEG, PDF, PDF/A, TIFF, Multi-TIFF Epson Scan 2: JPEG, TIFF, Multi-TIFF, PDF, Searchable PDF, BMP, PNG Document Capture Pro: JPEG, JPEG2000, BMP, PDF, Searchable PDF, TIFF, Multi-TIFF, PNG, DOCX, XLSX, PPTX ³ | |
| Control Panel | | |
| LCD Screen | 1.44" LCD | |
| Electrical Specifications | | |
| Rated Voltage | AC 100 - 240 V | |
| Rated Frequency | 50 - 60 Hz | |
| Power Consumption | | |
| Operating | 13W (USB) / 14W (Ethernet) | |
| Ready Mode | 5.9W | |
| Sleep Mode | 1.2W (USB) / 1.5W (Ethernet) | |
| Power Off | 0.1W | |
| Environmental Conditions | | |
| Temperature | | |
| Operating | 5 - 35 °C | |
| Storage | -25 - 60 °C | |
| Humidity | | |
| Operating | 15 - 80 % (No condensation) | |
| Storage | 15 - 85 % (No condensation) | |
| Options & Consumables | | |
| | Durability | Order Code |
| Roller Assembly Kit | 200,000 scans | B12B819671 |
| Carrier Sheet | 3,000 scans | B12B819051 |
| Cleaning Kit | - | B12B819291 |

Dimensions & Weight

DS-730N

Weight: 3.6kg



What's in the box:

- Scanner Main unit
- USB 2.0 Cable
- AC Adapter
- Power Cable
- Software CD
- Setup Guide

© 2022 Epson Singapore Pte Ltd. All Rights Reserved. Reproduction in part or in whole, without the written permission from Epson, is strictly prohibited. EPSON and EXCEED YOUR VISION are registered trademarks of Seiko Epson Corporation. All other products names and other company names used herein are for identification purposes only and are the trademarks or registered trademarks of their respective owners. Epson disclaims any and all rights in those marks. Print samples shown are simulations only. Specifications and product availability are subject to change without notice and may vary between countries. Please check with local Epson offices for more information.

Dealer's Stamp

Information correct at time of printing
Printed September 2022

¹ Scanning resolution as defined by ISO14473.

² Based on A4 documents.

³ PPTX for Windows version only.