

SPECIFICATIONS

Product Name	DS-770II	
Scanner		
Scanner Type	A4 sheet-fed, one-pass duplex colour scanner	
Sensor Type	Contact Image Sensor (CIS)	
Scanning Method	Fixed carriage and moving document	
Light Source	RGB LED	
Optical Resolution ¹	600 x 600 dpi	
Output Resolution	50 - 1,200 dpi (in 1 dpi increments)	
Bit Depth	Each colour (RGB): 10 bit input / 8 bit output	
Document Size		
Minimum	50.8 x 50.8 mm	
Maximum	215.9 x 6096 mm	
Supported Paper Weight	27 - 413 g/m ² (A8 or less 127 - 413 g/m ²)	
ADF Capacity	100 sheets (80g/m ²)	
Daily Scan Volume	Up to 7,000 pages / day	
Multi-feed Detection	Ultrasonic Sensor and Length Detection	
Interface	USB 3.2 Gen 1	
Scanning Speed ²		
Resolution (Colour/Greyscale/Mono)	Simplex / Duplex	
200 dpi	45 ppm / 90 ipm	
300 dpi	45 ppm / 90 ipm	
600 dpi	12 ppm / 24 ipm	
Drivers and Software		
Supported OS (Scanner Driver)		
Windows	Windows XP / Vista / 7 / 8 / 8.1 / 10 / Server 2003 / Server 2008 / Server 2012 / Server 2016	
Mac	Mac OS X 10.6.8 or later	
Driver Compatibility	TWAIN, SANE, WIA, ICA, ISIS	
Bundled Software	Epson Scan 2 ISIS Driver (Web Download) Epson Scan OCR Component Epson Scan PDF Extensions Document Capture Pro (Windows) Document Capture (Mac)	
File Format	Epson Scan 2: JPEG, TIFF, Multi-TIFF, PDF, Searchable PDF, BMP, PNG Document Capture Pro (Win): JPEG, BMP, PDF, Searchable PDF, TIFF, Multi-TIFF, PNG, DOCX, XLSX, PPTX	
Electrical Specifications		
Rated Voltage	AC 100 - 240 V	
Rated Frequency	50 - 60 Hz	
Power Consumption		
Operating	12W	
Ready Mode	5.4W	
Sleep Mode	1.0W	
Power Off	0.1W	
Environmental Conditions		
Temperature		
Operating	5 - 35°C	
Storage	-25 - 60°C	
Humidity		
Operating	15 - 80% (No condensation)	
Storage	15 - 85% (No condensation)	
Options & Consumables	Durability	Order Code
Flatbed Dock	-	B12B819011
Roller Assembly Kit	200,000 scans	B12B819671
Carrier Sheet	3,000 scans	B12B819051
Cleaning Kit	-	B12B819291

Dimensions & Weight

DS-770II
Weight: 3.7 kg / 8.16 lb



¹ Scanning resolution as defined by ISO14473.
² Based on A4 documents.

What's in the box:

- Scanner Main Unit
- USB 3.2 Cable
- AC Adapter
- Power Cord
- Software CD
- Setup Guide

© 2021 PT Epson Indonesia. All Rights Reserved. Reproduction in part or in whole, without the written permission from Epson, is strictly prohibited. EPSON and EXCEED YOUR VISION are registered trademarks of Seiko Epson Corporation. All other products names and other company names used herein are for identification purposes only and are the trademarks or registered trademarks of their respective owners. Epson disclaims any and all rights in those marks. Print samples shown are simulations only. Specifications and product availability are subject to change without notice and may vary between countries. Please check with local Epson offices for more information.

Apple, iPad and iPhone are trademarks of Apple Inc., registered in the U.S. and other countries. App Store is a service mark of Apple Inc.

Android is a trademark of Google Inc.

Dealer's Stamp

Information correct at time of printing
Printed January 2021

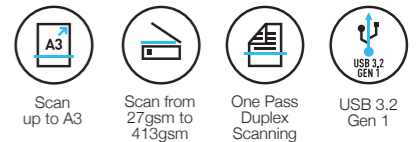
SCANNER WORKFORCE DS-770II

EPSON

STREAMLINE PRODUCTIVITY WITH HIGH-SPEED SCANNING PERFECTION.



Boost efficiency and productivity with the all-purpose, high-speed Epson Workforce DS-770II scanner. Capable of scanning a myriad of media from fragile documents to plastic cards, the DS-770II also allows scanning of thick objects such as books with its flatbed option.



IT'S IN THE DETAILS.

High-speed Scanning

Boasting a scan speed of 45ppm/90ipm, the DS-770II offers one pass duplex scanning.

Impressive Media Handling

Handles a wide variety of media from 27gsm to 413gsm efficiently and seamlessly.

Flatbed Option

A Flatbed Dock can be used with the Epson Perfection™ V39 to enable both sheetfed and flatbed scanning.



1-500-766 0812-12-37766 HOTLINE CALL CENTER (NATIONAL AREA)

PT Epson Indonesia
Epson Sales & Service
(Showroom)
Epson Service Center

Cibis Tower 9, 3rd Floor, CIBIS Business Park, Jalan TB Simatupang No.2, Jakarta 12560 Tel: (021) 808-66-766 Fax: (021) 808-66-799
ESS Bandung, ESS Batam, ESS Bogor, ESS Jakarta (Cilandak), ESS Jakarta (Mangga Dua), ESS Jakarta (Sudirman), ESS Makassar, ESS Manado, ESS Palu
ESS Purwokerto, ESS Semarang, ESS Surabaya (Gubeng), ESS Surabaya (Barat), ESS Tangerang
ESC Ambon, ESC Banjarmasin, ESC Cikarang, ESC Cirebon, ESC Denpasar, ESC Jember, ESC Madiun, ESC Medan, ESC Palembang, ESC Pekanbaru
ESC Pontianak, ESC Samarinda, ESC Serang, ESC Yogyakarta

For more information, visit <https://www.epson.co.id/scanner>



Experience a new level of quality and efficiency with the high-speed and versatile Epson WorkForce DS-770II. Designed to handle a wide variety of media, you'll be able to scan anything from fragile paper documents to plastic cards and even thick books with its flatbed option. Managing your scanned files is also a breeze with the Document Capture Pro software.

Versatile, High-speed Scanning

Boasting a scan speed of up to 45ppm/90ipm, the DS-770II offers one pass duplex scanning, that brings additional convenience in your daily use.



Impressive Media Handling

The DS-770II handles a wide variety of media between 27-413 gsm, so you can scan anything from paper documents to plastic cards such as ID, credit and business cards efficiently and seamlessly.



Flatbed Option*

With the optional Flatbed Dock, the Epson Perfection V39 can be used together with the DS-770II to provide a flatbed option for users who need to scan thick objects such as books, or small and fragile documents that can be easily damaged such as receipts.



* Push scanning is not supported for Flatbed. For Mac, installation of the V39 scanner driver is required.

Scan Fragile and A3 Documents Easily

Scan small and fragile documents, as well as A3-sized documents, using a carrier sheet that can be automatically detected by the DS-770II. Alternatively, you may scan fragile documents without using a carrier sheet by turning on the Slow Scan Mode.

User-friendly Features

Automatic Feeding Mode

The Automatic Feeding Mode enables large volumes of documents to be scanned continuously. In addition, this mode allows you to scan documents of different sizes at once without needing to arrange them by size, and saving them as a single PDF.



Paper Protection Function

Upon detection of abnormal paper feeding or stapled/folded paper, scanner will automatically stop to prevent damage to important documents.



Competitor



Epson

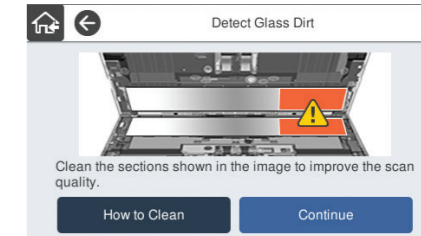
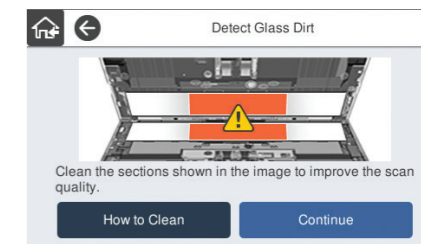
Double Feed Detection Skip Function

Activate the Double Feed Detection Skip function to scan documents with stickers and labels.



Image Sensor Glass Dirt Detection

A notification will be sent upon detection of dirt in three areas before scanning. This reduces the risk of re-scanning due to bad image quality, improves the Scan-to-workflow and increases business productivity.



Epson Scan 2

Text Enhancement

Improves text recognition when scanning text documents, whether in colour, greyscale or black-and-white. Removes background for better clarity, which is especially useful for double-sided printed documents.

Document Skew Correction

Automatically adjusts and straightens scanned images.



Colour Enhancement & Colour Dropout

Remove or enhance the visibility of ink signatures such as "Confidential" and "Urgent" stamps. Users can pick one of the preset colours (red, green, blue, pink, purple, yellow, orange, or all colours except black), or use the customised settings to dropout or enhance up to 5 colours of your choice with a single scan. Up to 10 preset colours can be saved for reuse.

PDF Features for Added Convenience

The built-in OCR enables searchable PDF files. Secure your PDF files by setting a password to prevent unauthorised viewing, editing or printing.

Document Management



Document Capture Software*

Easily scan, view, edit, save and transfer scanned documents. The software optically recognises barcodes, characters and blank pages in scanned documents to separate them into different folders. It allows you to create up to 30 customised job settings, making multiple scan jobs a breeze.

* Limited functionality for Mac version of Document Capture software.