

# HIGH-SPEED A3 SCANNER FOR YOUR BUSINESS.



At Epson, we focus on every detail of your business. Designed to support high-volume scanning environments, the WorkForce DS-30000 and DS-32000 combine performance, speed and durability in a sleek, compact design. With a daily duty cycle of up to 40,000 pages and speeds of up to 180 ipm on the DS-32000, these scanners deliver efficient document scanning with a diverse range of media handling at exceptional quality, for higher productivity.



Scan  
Up to A3



Speeds of  
up to  
180 ipm\*



One-pass  
Duplex  
Scanning



2.7" Colour  
LCD



OCR



DS-30000/32000

IT'S IN THE DETAILS.

## High-Speed Quality Scanning

Impressive image quality and scan speeds of up to 180 ipm with a daily duty cycle of up to 40,000 pages and a 120-sheet ADF for A4 media\*.

## High Versatility

Capable of handling a wide range of media up to A3. From passports to even thin, old and damaged documents\*.

## High Reliability

With paper protection function, abnormalities will be detected during scanning to minimise paper damage.



Fast, durable and versatile, the WorkForce DS-30000 and DS-32000 are the perfect high-speed, high-volume, high-quality scanners for offices that require heavy-duty scanning. Packed with smart features such as automatic size recognition and paper protection function, you enjoy high-precision quality scans every time. On top of that, the ability to support a wide range of media up to A3 provides greater flexibility for higher productivity gains.



### Compact Size

Compact in size for better mobility and smaller footprint; enjoy the option of keeping the DS-32000 in a storage position\* after use.



### Durable, High-speed Scanning

Designed for fast, high-volume scanning, enjoy scanning speeds of up to 70 ppm/140 ipm on the DS-30000 and 90 ppm/180 ipm on the DS-32000. With a 120-sheet Automatic Document Feeder for A4 media and high daily duty cycle of up to 40,000 pages\*, these scanners provide the robust reliability that businesses need.



### High Quality Image

With built-in functions to improve colour production, the scanner can also remove crease marks, reduce bleed through and even select background colour based on paper type.

### 2.7" Colour LCD

Equipped with a large screen size of 2.7", users get a clear display of job contents at a glance and can even view and assign up to 30 jobs at a time on the panel. Operate the scanner easily using push scan functions and change the scan settings directly from the panel without having to use a PC.



## Automatic Size Recognition

Place documents of different sizes up to A3 in the middle of the feeding tray and the DS-30000/32000 will automatically detect and scan everything in the correct size, all in a single batch.



## Diverse Media Handling with Flexible Scanning Modes



With Epson's smart design, these WorkForce models are able to scan up to A3 on a wide range of media types of varying thickness (up to 413 g/m<sup>2</sup>) and up to paper length of 5,588 mm.



Scanning passports with a special carrier sheet will be automatically detected by the scanners when using Manual Feed mode. This Manual Feed mode can also be used to stitch A2 documents and documents with post-its.



Switching to Delicate Feed\* mode on DS-32000 allows you to scan fragile and extremely thin paper (up to 20 g/m<sup>2</sup>) easily.

## User-friendly Features

### Automatic Feeding Mode



The Automatic Feeding Mode enables large volumes of documents to immediately be scanned continuously. In addition, this mode allows you to scan documents one at a time without needing to arrange them by size and they will be saved into a single PDF.

### Double Feed Detection Skip Function



Activate the Double Feed Detection Skip function to scan documents with stickers and labels.

### Epson PaperCare: Paper Protection Function



Epson's Paper Protection Technology detects abnormalities in paper posture as well as stapled/folded paper, preventing damage to your important documents. The inbuilt advanced paper-protection sensors prevent documents from being damaged and ultra-sonic sensors ensure all documents are scanned, maintaining data integrity.

## Epson Scan 2

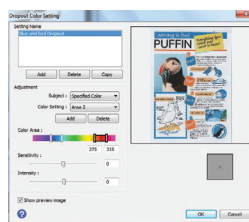
### Text Enhancement

Improves text recognition when scanning text documents, whether in colour, greyscale or black-and-white. Removes background for better clarity, which is especially useful for double-sided printed documents.

### Document Skew Correction

Automatically adjusts and straightens scanned images.

### Colour Enhancement & Colour Dropout



Remove or enhance the visibility of ink signatures such as "Confidential" and "Urgent" stamps. Users can pick one of the preset colours (red, green, blue, pink, purple, yellow, orange, or all colours except black), or use the customised settings to dropout or enhance up to 5 colours of your choice with a single scan. Up to 10 preset colours can be saved for reuse.

### PDF Features for Added Convenience

The built-in OCR enables searchable PDF files. Secure your PDF files by setting a password to prevent unauthorised viewing, editing or printing.

## Document Management

### Document Capture Pro<sup>^</sup>



Easily scan, view, edit, save and transfer scanned documents. The software recognises barcodes, characters and blank pages in scanned documents for batch

separation. It allows you to create up to 30 customised job settings, with the option to assign shortcuts of the scan jobs to the scanner's operation panel to simplify scan workflow. With the built-in OCR capability, searchable PDF files can be created and documents can be saved into editable Microsoft Office formats. In addition, device and documents can be secured through password protection, by locating and tracking documents using the Advanced Log function.

<sup>^</sup>Limited functionality for Mac version of Document Capture software.

### Document Capture Pro Server<sup>^^</sup>



Document Capture Pro Server helps to centralise your scanning and manage your fleet of scanners without the need to install drivers on individual computers.

<sup>^^</sup>Only for Windows Server OS.

## Compatible with Epson Device Admin



With Epson Device Admin, you can now manage, monitor and configure your Epson device fleet easily. It is compatible with a large range of networked printers and scanners, and all information can be viewed via one smart, intuitive interface.

### Epson Device Admin Functions

- Manage Epson devices in groups
- Receive automatic alerts for quick response when the device faces an error or when it runs out of consumables
- Generate reports automatically for cost-savings activities
- Configure multiple devices efficiently with templates to simplify large deployments

For more information, please refer to <http://www.epson.co.id/epsondeviceadmin>

MODEL NUMBER	DS-30000	DS-32000
Scanner		
Scanner Type	A3 sheet-fed, one-pass duplex colour scanner	
Sensor Type	Colour Contact Image Sensor (CIS)	
Scanning Method	Fixed document and moving carriage	
Light Source	White LED x 4	
Optical Resolution*1	600 x 600 dpi	
Output Resolution	50 - 1,200 dpi (in 1 dpi increments)	
Bit Depth		
Colour	30-bit input, 24-bit output	
Greyscale	10-bit input, 8-bit output	
Black & White	10-bit input, 1-bit output	
Document Size		
Minimum	50.8 x 69 mm	
Maximum	304.8 x 558 mm	
Supported Paper Weight	27 - 413 g/m²	20 - 413 g/m²
ADF Capacity	A4: 120 sheets, A3: 60 sheets	A4: 120 sheets, A3: 60 sheets Delicate Feed Mode: 20 sheets (A4), 10 sheets (A3)
Document Size	Up to 30,000 sheets / day	Up to 40,000 sheets / day
Multi-feed Detection	Ultrasonic Sensor and Length Detection	
Interface	USB 3.0	
Scanning Speed*2		
Resolution (A4, Colour / Monochrome)		
200 dpi	70 ppm / 140 ipm	90 ppm / 180 ipm
300 dpi	70 ppm / 140 ipm	90 ppm / 180 ipm
600 dpi	22 ppm / 44 ipm	26 ppm / 52 ipm
Drivers and Software		
Supported OS (Scanner Driver)		
Windows	Windows XP SP3 / Vista / 7 / 8 / 8.1 / 10 / Server 2003 / Server 2008 / Server 2012 / Server 2016 / Server 2019	
Mac	Mac OS X 10.6.8 or later	
Driver Compatibility	TWAIN, SANE, WIA, ICA, ISIS	
Software Bundle	Epson Scan 2 Epson Scan OCR Component Epson Scan PDF Extensions Document Capture Pro (Windows) Document Capture (Mac)	
Software Solutions Compatibility	Document Capture Pro Server Epson Device Admin	
File Format	Epson Scan 2: JPEG, TIFF, Multi-TIFF, PDF, Searchable PDF, BMP, PNG Document Capture Pro: JPEG, JPEG2000, BMP, PDF, Searchable PDF, TIFF, Multi-TIFF, PNG, DOCX, XLSX, PPTX	
Control Panel		
LCD Screen	2.7" Colour LCD Screen	
Electrical Specifications		
Rated Voltage	AC 100-240V	
Rated Frequency	50 – 60Hz	
Power Consumption		
Operating	17W	20W
Ready Mode	9.0W	9.5W
Sleep Mode	1.4W	1.4W
Power off	0.1W	0.1W
Environmental Conditions		
Temperature		
Operating	5 - 35°C	
Storage	-25 - 60°C	
Humidity		
Operating	15 - 80% (No condensation)	
Storage	15 - 85% (No condensation)	
Options / Consumables		Order Code
Pickup Roller	300,000 scans	B12B819611
Separation Roller	300,000 scans	B12B819631
Carrier Sheet	-	B12B819051
Passport Carrier Sheet	-	B12B819651
Cleaning Kit	-	B12B819291

\*1 Scanning resolution as defined by ISO 14473.

\*2 Based on A4 size documents

\*3 PPTX for Windows version only

## Dimensions & Weight

**DS-30000**  
**Weight:** 5.8 kg / 13.4 lb



**DS-32000**  
**Weight:** 6.9 kg / 15.4 lb



## What's in the box:

- Scanner Main unit
- USB 3.0 Cable
- AC Adapter
- Power Cable
- Software CD
- Setup Guide

© 2022 PT Epson Indonesia. All Rights Reserved.  
Reproduction in part or in whole, without the written permission from Epson, is strictly prohibited. EPSON and EXCEED YOUR VISION are registered trademarks of Seiko Epson Corporation. All other products names and other company names used herein are for identification Purposes only and are the trademarks or registered trademarks of their respective owners. Epson disclaims any and all rights in those marks. Scanned images shown herein are simulations. The actual product design and contents may vary. Specifications and products availability are subject to change without notice and may vary between countries. Please check with local Epson offices for more information.

Dealer's Stamp

Information correct at time of printing  
Printed September 2022