

SPECIFICATIONS

MODEL NUMBER	EB-L260F	EB-L210W		
SKU Number	V11HA69080	V11HA70080		
Projection Technology	RGB liquid crystal shutter projection system			
Specifications of Main Parts				
LCD	Size	0.62" (C2Fine)	0.59" (C2Fine)	
	Resolution	Full HD (1080p)	WXGA (1280 x 800)	
	Projection Lens	Type	Optical Zoom (Manual) / Focus (Manual)	
		F-Number	1.51 - 1.77	
	Focal Length	18.2 - 29.1mm		
Zoom Ratio	Zoom Ratio	1.0 - 1.62 (Optical Zoom)		
	Throw Ratio	1.32 - 2.12		
Light Source	Type	Laser Diode		
	Life (Normal / Quiet / Extended)	20,000 / 20,000 / 30,000 hrs		
Screen Size (Projected Distance)	Standard: 62" screen @ 180cm Zoom (Wide): 31" to 310" screen (88 - 906cm)	Standard: 60" screen @ 180cm Zoom (Wide): 30" to 300" screen (88 - 909cm)		
Brightness¹				
White Light Output (Normal / Eco)	4,600lm / 3,200lm	4,500lm / 3,100lm		
Colour Light Output	4,600lm	4,500lm		
Contrast Ratio	Over 2,500,000 : 1			
Internal Speaker(s)				
Sound Output	16W Monaural			
Geometric Correction				
Vertical / Horizontal Keystone	±30° / ±30°			
Quick Corner	Yes (Manual)			
Image				
Noise Reduction	Yes			
Super-Resolution	Yes			
Detail Enhancement	Yes			
Connectivity				
Analog Input	D-Sub 15Pin	2		
	Composite	RCA x 1 (Yellow)		
Digital Input	HDMI	2 (HDCP 2.3)		
Analog Output	D-Sub 15Pin	1 (Black) (in common with Computer 2)		
	Audio Input	RCA	1 (White, Red)	
Audio Output	Stereo Mini Jack	2		
	Stereo Mini Jack	1		
Others	USB Type A	1 (For PC Free, FW Update, Copy OSD Settings or 5V/2A Power Supply)		
	USB Type B	1 (For Firmware Update, Copy OSD Settings)		
Mic I/O	Stereo Mini x 1			
Control I/O	RS-232C	D-Sub 9pin x 1		
Network	Wired LAN	RJ45 x 1 (100Mbps)		
	Wireless	Built-in and Optional (Using ELPAP11)		
Wireless Specification				
(Wireless LAN and Screen Mirroring)				
Supported Speed For Each Mode	Infrastructure: IEEE 802.11b (2.4GHz): 11Mbps ² , IEEE 802.11g (2.4GHz): 54Mbps ² , IEEE 802.11n (2.4GHz): 72.2Mbps ² , IEEE 802.11a (5GHz): 54Mbps ² , IEEE 802.11n (5GHz): 150Mbps ² , IEEE 802.11ac (5GHz): 325Mbps ² Access Point (Wi-Fi Direct): IEEE 802.11g (2.4GHz): 54Mbps ² , IEEE 802.11n (2.4GHz): 72.2Mbps ² , IEEE 802.11a (5GHz): 54Mbps ² , IEEE 802.11n (5GHz): 150Mbps ² , IEEE 802.11ac (5GHz): 325Mbps ²			
Supported Mode	Infrastructure, Access Point (Wi-Fi Direct)			
Wireless LAN Security	Infrastructure: WPA2 / WPA3-PSK, WPA2 / WPA3-EAP Supported EAP Type: PEAP, PEAP-TLS, EAP-TLS, EAP-Fast ; Access Point (Wi-Fi Direct): WPA2-PSK (AES)			
(Optional Wireless LAN)				
Supported Speed For Each Mode	Access Point (Wi-Fi Direct): IEEE 802.11g (2.4GHz): 54Mbps ² , IEEE 802.11n (2.4GHz): 72.2Mbps ² , IEEE 802.11a (5GHz): 54Mbps ² , IEEE 802.11n (5GHz): 150Mbps ² , IEEE 802.11ac (5GHz): 325Mbps ² Access Point (Wi-Fi Direct)			
Supported Mode	Access Point (Wi-Fi Direct)			
Wireless LAN Security	WPA2-PSK (AES)			
Operating Temperature³	0 - 2,286 m (0 - 7,500 ft): 0 °C - 40 °C [32 °F - 104 °F] ; 20% to 80% Humidity, No Condensation Over 2,286 m (7,500 ft): 0 - 35 °C [32 °F - 95 °F] ; 20%-80% Humidity, No Condensation			
Operating Altitude	Over 1,500 m / 4,921 ft, with High Altitude Mode: 0 - 3,048 m (0 - 10,000 ft)			
Direct Power On / Off	Yes			
Start-Up Period	Less than 9 seconds (Epson Logo), Warm-up Period: 30 seconds			
Quick Start-Up	Less than 5 seconds (Display)			
Cool Down Period	Instant Off			
Air Filter	Type	Electrostatic Filter		
	Maintenance Cycle ⁴	20,000 hours		
Power Supply Voltage	100 - 240 V AC ±10%, 50/60 Hz			
Power Consumption (220 - 240V)				
Lamp On (Normal / Extended)	260W / 191W			
Standby (Network On / Off)	2.0W / 0.5W			
Dimension Excluding Feet (D x W x H)	299 x 325 x 90 mm			
Weight (with cable cover)	Approx. 4.2kg			
Fan Noise (Normal / Eco)	37dB / 27dB			

¹ Colour brightness (colour light output) and white brightness (white light output) will vary depending on usage conditions. Colour light output measured in accordance with IDMS 15:4; white light output measured in accordance with ISO 21118.
² Maximum speed and range is achievable when used with same enhanced mode technology. Actual data rates, features and performance may vary depending on your computer system, the environment and other factors.
³ When environmental temperature becomes high, the brightness becomes dark automatically.
⁴ When used in the general office environment (the amount of floating dust: 0.04 - 0.2 mg/m³). Based on the Epson's in-house test results.

Supplied Accessories

Power Cable: 1.8m x 1
HDMI Cable: 1.8m
Remote Control with 2xAA Battery
User Guide

Optional Accessories

Air Filter:ELPAF60
Ceiling Mount: ELPMB23
Ceiling Mount (New):
ELPMB60W (White), ELPMB60B (Black),
ELPMB61W (White), ELPMB61B (Black)
Wireless LAN unit: ELPAP11
Document Camera:
ELPDC07, ELPDC13, ELPDC21
Wireless Presentation System: ELPWP10
Soft Carry Case: ELPKS71

EB-L260F/L210W



©2023 Epson Singapore Pte Ltd. All Rights Reserved. Reproduction in part or in whole, without the written permission from Epson, is strictly prohibited.

EPSON is a registered trademark of Seiko Epson Corporation.

All other product names and other company names used herein are for identification purposes only and are the trademarks or registered trademarks of their respective owners.

Epson disclaims any and all rights in those marks. Projected images shown herein are simulations. The actual product design and contents may vary. Specifications are subject to change without notice and may vary between countries. Please check with local Epson offices for more information.

Apple, iPad and iPhone are trademarks of Apple Inc., registered in the U.S. and other countries. App Store is a service mark of Apple Inc.

Android is a trademark of Google Inc.

Dealer's Stamp

Information correct at time of printing.
Printed June 2023

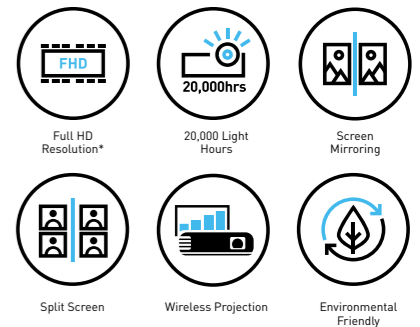
BUSINESS LASER PROJECTORS EB-L260F/L210W

EPSON



Revolutionise the way you present and collaborate.

Unleash the potential of your presentations with Epson EB-L260F/L210W series projectors! Elevate your visuals to a whole new level with brilliantly vivid and crystal-clear images. Designed specifically for the education and corporate sectors, these projectors optimise your content on immersive Full HD* displays with expansive wide-aspect screens. Whether you're in a conference room or a spacious lecture hall, captivate your audience, fuel their engagement, and make a lasting impression.



Impressive Image Quality

Delivering vibrant and sharp visuals in full-HD resolution* up to 4,600 lumens with a laser light source.

Ease of Connectivity

High portability to facilitate movement between rooms and connect effortlessly with built-in WiFi connectivity.

Trusted Reliability

Delivering up to 20,000 hours** of maintenance-free laser light source, present and impress with confidence.

* Full HD only applicable for EB-L260F.
**Approximate time until brightness decreases 50% from first usage. Measured by acceleration test assuming use of 0.04 - 0.20 mg/m³ of particulate matter. Time varies depending on usage conditions and environments.

Find out more at www.epson.com.sg/projectors



Epson Singapore Pte Ltd 438B Alexandra Road, Block B Alexandra Technopark, #04-01/04, Singapore 119968. Tel: (65) 6586-5500
Epson Customer Care Center 100G Pasir Panjang Road, #01-09 Interlocal Centre, Singapore 118523. Epson Helpdesk: 800 120 5564. Please refer to www.epson.com.sg/contact for opening hours.

Stand out from the crowd

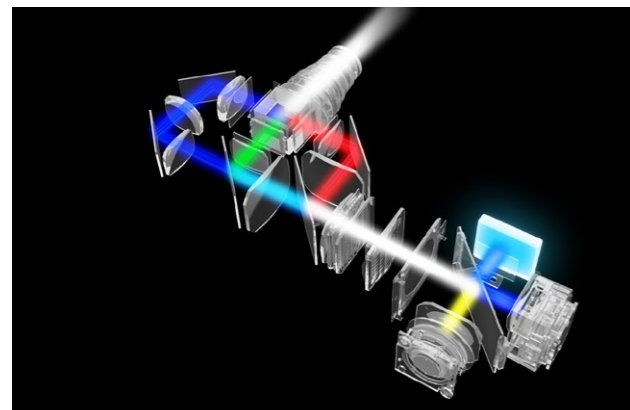
With Epson Laser Projectors

Epson's standard-throw business laser projectors transform presentations with bright, clear visuals that are easy on the eyes. With built-to-last laser technology that's energy-efficient and low-maintenance, they're ideal for professional use. Create impressive presentations on massive spaces with large screen projection on walls, ceilings, and floors, captivating your audience like never before.



Improved Design

By utilising Epson's original fixed phosphor unit and an optimised design, the projector produces brighter and sharper images while being more compact. Additionally, the new heatsink design enhances heat conductivity and resistance, resulting in improved performance and high-quality, vivid images.

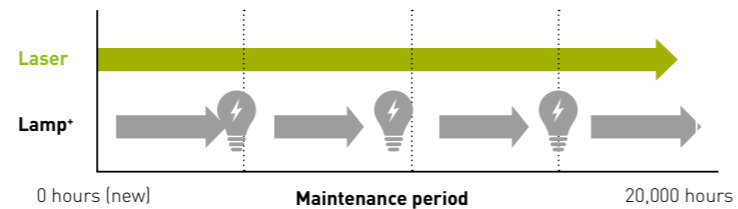


20,000 Maintenance-Free Hours

Epson's unique laser technology allows for 20,000 hours* of maintenance-free laser light source in the projector. Users can enjoy peace of mind and highly reliable performance, thanks to the innovative fixed phosphor unit, providing long-lasting durability to the device.



Maintenance period of laser and lamp



*No required maintenance for the light source for up to 20,000 hours. Approximate time until brightness decreases 50% from first usage. Measured by acceleration test assuming use of 0.04 - 0.20 mg/m3 of particulate matter. Time varies depending on usage conditions and environment. Replacement of parts other than the light source may be required in a shorter period.

Enhance your viewing experience



Providing a more immersive and engaging viewing experience, Epson's all-new standard throw Full HD models* project 16:6" and 21:9" widescreen aspects with clarity, covering up to 310" diagonal for the EB-L260F (16:9) and 300" diagonal for the EB-L210W (16:10), making these projectors suitable for every education and business need.

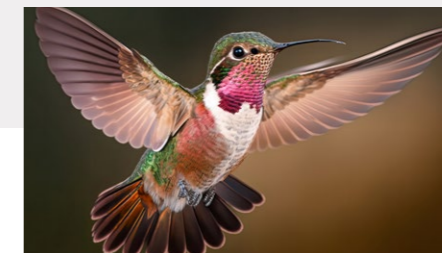
4:3	16:6"	16:9	16:10	21:9"
	FOR FHD MODEL			FOR FHD MODEL

*Only applicable to EB-L260F. The 21:9 aspect ratio is commonly used for video conferencing in hybrid workspaces.



Vibrant Image Quality

Detailed and sharp visuals are projected clearly, visible even in well-lit environments and from a distance.

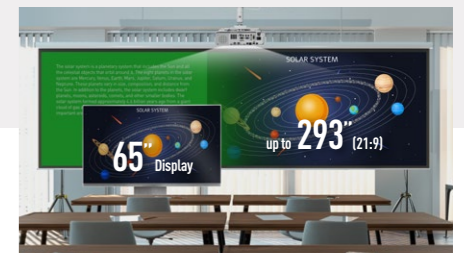


Alluring and Captivating

Content is projected with exceptional clarity in Full-HD* resolution, captivating your audiences.

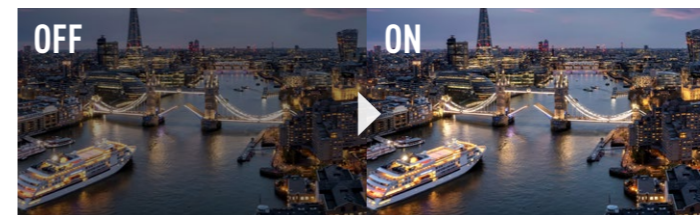


*Only for EB-L260F.

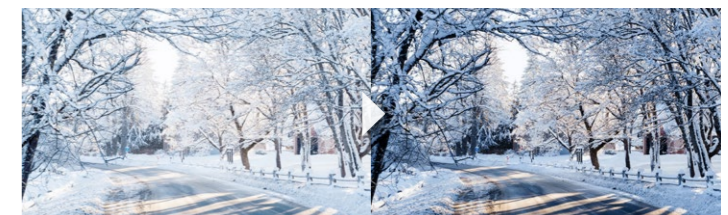


Display Size Matters

Epson's standard-throw business laser projectors provide bright, clear visuals even on large screens. This ensures everyone can view the content, no matter where they are seated.



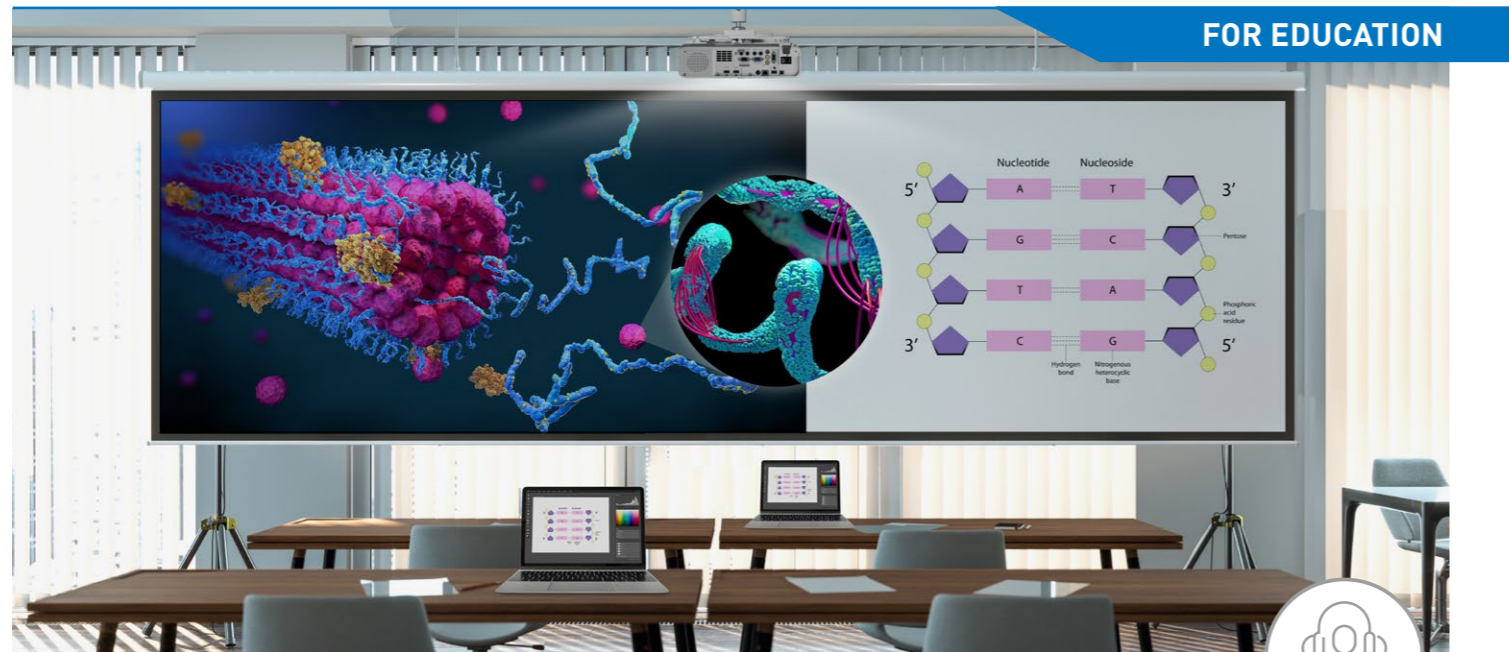
Achieve optimal contrast effortlessly with automatic gamma level adjustment.



Elevate your bright scene with improved visibility and a captivating contrast that truly stands out.

Over 2,500,000:1 Contrast Ratio

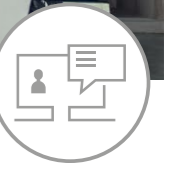
The astounding over 2,500,000:1 contrast ratio improves visibility and enhances the contrast in scenes that are too bright or dark.



Engaging and immersive learning experience

That leaves a lasting impact

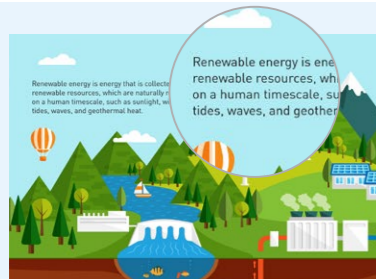
Experience enriching learning with Epson's standard-throw projectors, which display sharp images and text on large screens without causing eye strain. Thanks to their innovative design, these projectors can project directly onto an existing whiteboard, enabling an engaging learning experience without the need for an additional display.



Deliver your messages clearly

For a dynamic and effective business presentation

Facilitate collaboration between departments with clear projections and increase engagement with clients through dynamic presentations. Capture your customers' attention with impressive presentations that deliver exceptional clarity and performance, without compromising on quality.



Screen Size Flexibility

Up to 1.6X optical zoom provides the flexibility to adjust the projector screen size while maintaining its visual clarity.



Multi-PC Projection

The Epson iProjection software allows teachers to display the work of up to four students on the screen for discussion. Additionally, up to 50 students can be connected to the connection list at once.



Wireless Integration

Ease of connection with built-in wireless connectivity through Wi-Fi and screen mirroring support.



Perfect Even in Bright Rooms

Even in bright environments, Epson projectors are equipped with a 4,600lm* light source, enabling them to project clear and sharp visuals

*For EB-L260F.



Wide Aspect Screen Size

With functions supporting wide-aspect screens, you can easily navigate the controls via a remote controller.



Cost Effective Upgrades

Simply install your Epson projector on an existing mount* without having to buy a new one.

*Compatible mount: ELPMB23 (White), ELPMB60W (White), ELPMB60B (Black), ELPMB61W (White) and ELPMB61B (Black).

Download and Project



Project Documents, Photos Wirelessly

Enjoy wireless projection via the Epson iProjection app with your PC (Windows, Mac and Chromebook) or mobile devices. This powerful app allows you to share, manage, and annotate on displayed content from an easy-to-use, intuitive menu.



Epson iProjection

Plug-in and Project



Quick and Easy Connection

The optional ELPWP10* wireless presentation kit provides a quick way to connect wirelessly without installing iProjection software. Simply plug in the dongle and tap the connect button to share your content immediately.

*ELPWP10 is sold separately.



Unveil The True Colours

EPSON 3LCD PROJECTORS



True BRIGHTNESS

True COMFORT

True REALISM

Up to 3x
Brighter Colours



☀️
WHITE 3000 LUMENS
🌈
COLOUR 3000 LUMENS



☀️
WHITE 3000 LUMENS
🌈
COLOUR 430 LUMENS**

No Rainbow
Effect



🔊 ➡️
LIGHT SOURCE **PRISM**



🔊 ➡️
LIGHT SOURCE **ROTATING COLOUR WHEEL**

3x Wider
Colour Gamut



WIDER COLOUR RANGE



SMALLER COLOUR RANGE

1-CHIP PROJECTORS

EPSON 3LCD PROJECTORS

1 - CHIP PROJECTORS



Scan here to find out more



Efforts to mitigate environmental impacts in manufacturing



Toyoshina plant in Japan

Epson becomes the Manufacturing Industry's First¹ to Switch to 100% Renewable Electricity at all sites² in Japan.

In November 2021, we achieved 100% renewable electricity at all domestic sites², Shinshu Green Electricity, CO₂-free value-added electric power produced locally in Nagano Prefecture using Nagano Prefecture hydroelectric power. This is both reducing Epson's GHG emissions³ and increasing consumption of locally produced energy.

Assembled⁴ using 100% renewable electricity

Epson announced that its worldwide group sites² will all meet their electricity needs from 100% renewable energy sources (renewable electricity) by 2023. We have achieved 100% renewable energy at our projector's manufacturing site in the Philippines by generating power with a rooftop mega-solar power plant and by switching to a mix of geothermal and hydroelectric power in January 2021.



Epson Precision (Philippines), Inc.



Over 80%
recycled cardboard packaging

All carton box packaging of Epson's projectors are made by over 80% recycled cardboard.

1 Among Japanese companies that have joined the RE100. Per Epson research as of October 27, 2021.
2 Excludes leased properties of some sales sites, etc.
3 GHG (Greenhouse Gas), GHG scope 1, 2, 3 emission
4 Products assembled in the Philippines.