

SPECIFICATIONS

MODEL NAME	TM-T88VII	
Print Technology	Thermal Line Printing	
Print Font	Font	
Font	ANK: 12 x 24 (default) / 10 x 24 / 9 x 17; Kanji Font: 24 x 24 / 20 x 24 / 16 x 16; Thai Font: 12 x 24 / 9 x 24	
Character Set	95 Alphanumeric, 18 set International, 128 x 43 graphics	
Barcode Standards	Bar code: UPC-A, UPC-E, JAN8 / EAN 8, JAN13 / EAN13, Code39, Code93, Code128, Code 128 auto, ITF, CODABAR (NW-7), GS1-128, GS1 DataBar 2D Symbol: PDF417, QR code, Maxi Code, Data Matrix, Aztec, Two-dimensional GS1 DataBar, Composite Symbology	
Supported Language	ANK + Thai/Viet + Simplified Chinese + Traditional Chinese + Korean + Japanese (Unicode support*)	
Interface	UIB Model	
UIB Model	USB B x1, USB A x1, Ethernet; Serial / Parallel / Powered USB / Wi-Fi Dongle Optional	
Fixed Interface Model	USB B x1, USB A x2, Ethernet; Wi-Fi Dongle Optional	
Receive Data Buffer	4 KB	
Print Speed	500 mm/sec	
Dot / Line	512 dots (80mm), 360 dots (58mm)	
Dot / Inch	180 x 180 dpi	
Paper	Dimensions (mm)	
Dimensions (mm)	Roll Paper: 79.5 ± 0.5 (W) × Dia. 83 mm 57.5 ± 0.5 (W) × Dia. 83 mm	
Power	Operating Voltage	
Operating Voltage	DC 24 V ± 7 %	
Power Consumption	Universal Interface Board (UIB) Model	
	Operating: 27.9 W / Standby: 1.4 W	Fixed Interface Model
		Operating: 26.4 W / Standby: 1.4 W
Operating Temperature	5 - 45° C (41 - 113° F)	
Humidity	10 - 90% RH	
Power Supply	AC Adapter (Model: PS-190)	
Reliability	Printer Mechanism Life	
Printer Mechanism Life	20 million lines	
Auto Cutter Life	3 million cuts	
Thermal Printhead Life	200 Km	
MTBF	360,000 hours	
MCBF	70 million lines	
Colour	Epson Black (EBCK), Epson Ultra White (ENB9)	
Dimensions	Horizontal Placement	Wall Mounted (Options)
	(W X D X H)	(W X D X H)
	145 x 195 x 148 mm	145 x 148 x 195 mm
Weight	Approx. 1.7 Kg	
General Information	LED Indicators	
LED Indicators	Blue LED - Power, Interfaces (Ethernet, Wi-Fi) Orange LED - Error and/or Paper Out	
Sensor	Paper End, Cover Open	
Built-in Features	Advanced Paper Reduction, Status Notification, Server Direct Print	
Printer Driver	Windows Driver (APD), OPOS, OPOS.NET, JavaPOS (Windows, Linux), CUPS Driver (Linux), Mac Driver, TM Virtual Port Driver, ePOS SDK (iOS, Android, Javascript)	
Utility Tools	TM Utility (Android, iOS), TM-T88VII Utility (Windows PC), EpsonNet Config (Win, Mac), TM-Print Assistant (Android, iOS), Deployment Tool, Monitoring Tool, TM FontRunner, TM-T88VII Model Setting Utility	
Easy Setting	NFC	
What's in the Box	AC Adapter PS-190, Roll paper x1 (for operation check), Connector cover, Interface cover, Power switch cover, 58mm paper guide, Screws, Setup guide	

*1 Unicode support is only for languages listed above.

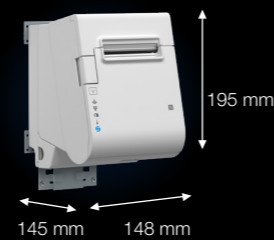
DIMENSIONS & WEIGHT

Weight: Approx. 1.7Kg

Horizontal Placement



Wall Mounted (Options)



Consumables & Options

PS-190 Power Supply Box	OT-BX88VII
External Buzzer	OT-BZ20
Wall Hanging Bracket	WH-10
Wireless LAN Dongle	OT-WL06
AC Adapter	PS-190
Customer Display Unit	DM-D110, DM-D30

Interface card (Only for UIB model)

Serial Interface Card	UB-S01
Parallel Interface Card	UB-P02II
Powered USB Card	UB-U06

Legend

dpi dots per 25.4 mm (dots per inch)

©2023 PT Epson Indonesia. All Rights Reserved. Reproduction in part or in whole, without the written permission from Epson, is strictly prohibited.

EPSON and EXCEED YOUR VISION are registered trademarks of Seiko Epson Corporation.

All other product names and other company names used herein are for identification purposes only and are the trademarks or registered trademarks of their respective owners.

Epson disclaims any and all rights in those marks. Projected images shown herein are simulations. The actual product design and contents may vary. Specifications are subject to change without notice and may vary between countries. Please check with local Epson offices for more information.

Apple, iPad and iPhone are trademarks of Apple Inc., registered in the U.S. and other countries. App Store is a service mark of Apple Inc.

Android is a trademark of Google Inc.

Dealer's Stamp

Information correct at time of printing.
Printed January 2023

POINT-OF-SALE PRINTER
TM-T88VII

EPSON

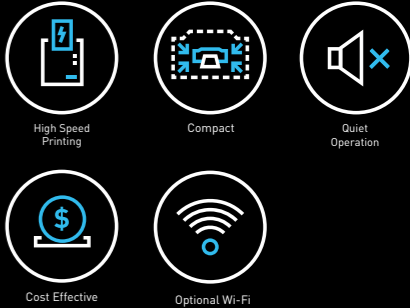
SUPERCHARGE
YOUR BUSINESS
WITH SPEED AND
VERSATILITY.



Optimise your retail business with high-speed printing and reliable performance.

Achieve more with the all-new Epson POS printer TM-T88VII, now with enhanced printing speed of up to 500mm/s, multiple connectivity, and UTF-8 support. With auto cutter life of up to three million cuts, businesses can operate smoothly with reduced maintenance costs. With features like Server Direct Print, multiple language support, and availability of comprehensive SDK, POS integration is made easier and less time-consuming.

Remember, **it's in the details.** [epson.co.id/pos](https://www.epson.co.id/pos)



Fast And Quiet Printing

Despite fast printing speed of up to 500mm/s, the TM-T88VII still prints quietly at 52dB.

Flexible Connectivity

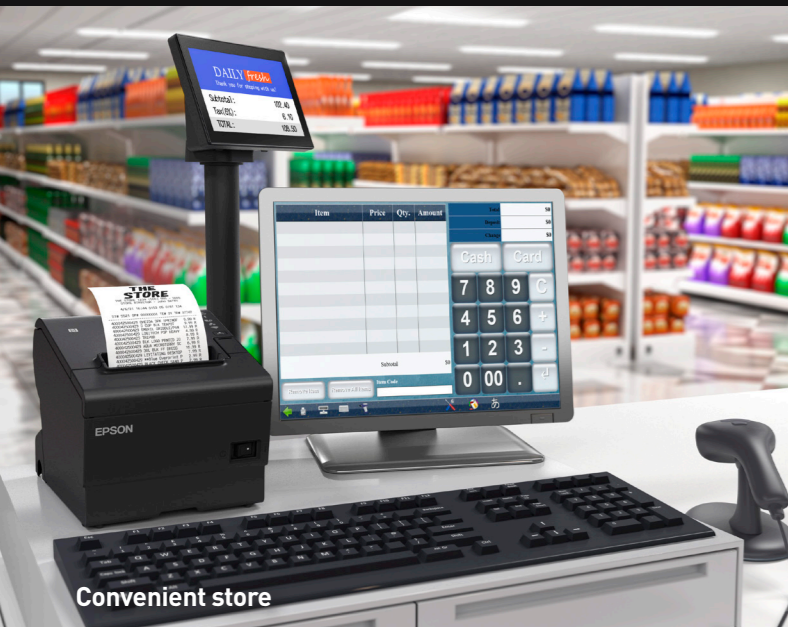
Choose from a wide array of connectivity from USB, Ethernet, Serial, Parallel to optional Wi-Fi dongle.

High Reliability

With an auto cutter life of up to three million cuts, the TM-T88VII offers smooth printing and low maintenance cost.

LEADING RETAIL TRANSFORMATION WITH HIGH-EFFICIENCY POS

Fuss-free to set up, Epson's TM-T88VII is the ideal POS for businesses with its high-speed printing and flexible connectivity.



Convenient store



Medical center

RELIABLE PERFORMANCE

Superior Print Speed

With print speeds up to **500 mm/s**, the reliable TM-T88VII is **1.4 times faster** than its predecessor – TM-T88VI, all while delivering clear and accurate prints.

LED Light Indicators

Conveniently check the network connection status with the Wi-Fi/Ethernet LED Light Panel.



- Power
- Error
- Paper
- Ethernet
- Wi-Fi

Splash Resistance

With a splash resistance* of IPX2 and a simple, flat design, the TM-T88VII is easy-to-clean and ideal for use in a kitchen environment.

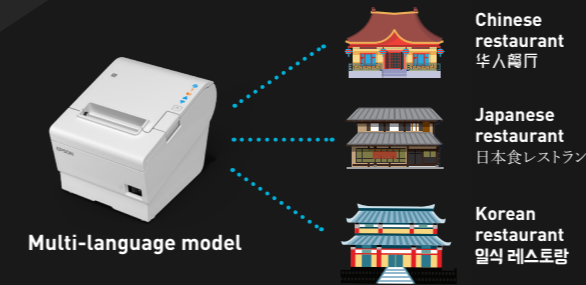


*When installed horizontally.

IMPROVED VERSATILITY TO MEET NEW NEEDS

Multi-Language Support in One Printer

Enable multi-language printing with Unicode UTF-8 support*. Ideal for global businesses, save big on costs and time by printing various languages such as English, Chinese, Korean, and Japanese with just one printer.



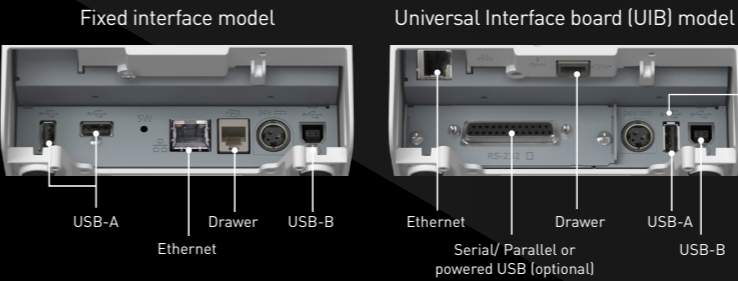
*Unicode support is only for languages listed in the specifications sheet.

Compact New Power Supply

Not only is the TM-T88VII compact, but its all-new power supply also comes with a narrower DC cable and takes up 24% smaller space compared to its predecessor, PS-180.

24% Smaller
Than PS-180*

*PS-180 has capacity to provide power to T88VII, however, the performance is not guaranteed.



Flexible Interface Options

TM-T88VII's multiple interface support opens up a wide range of communication possibilities. From USB, Serial, Ethernet to optional Wi-Fi dongle, making it compatible with a wide range of POS systems.

ABUNDANCE OF CONNECTIVITY

POS system integrator can enjoy the flexibility of device integration with TM-T88VII.

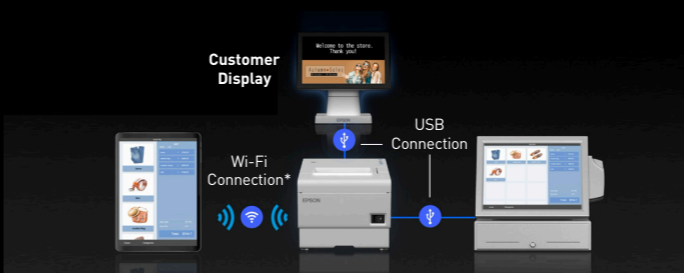
SCENARIO 1

Using the same printer for PC and Tablet.



SCENARIO 3

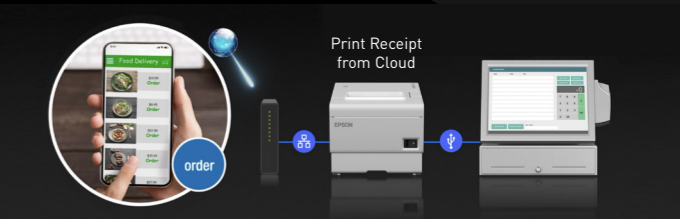
Controlling a customer's display with PC or Tablet.



*Only one of Ethernet and Wi-Fi can be used.

SCENARIO 2

Server Direct Printing by pulling data directly from the cloud server. Ideal for businesses with high online orders.



SCENARIO 4

Convenient and quick pairing with tablet via NFC or SimpleAP mode.

