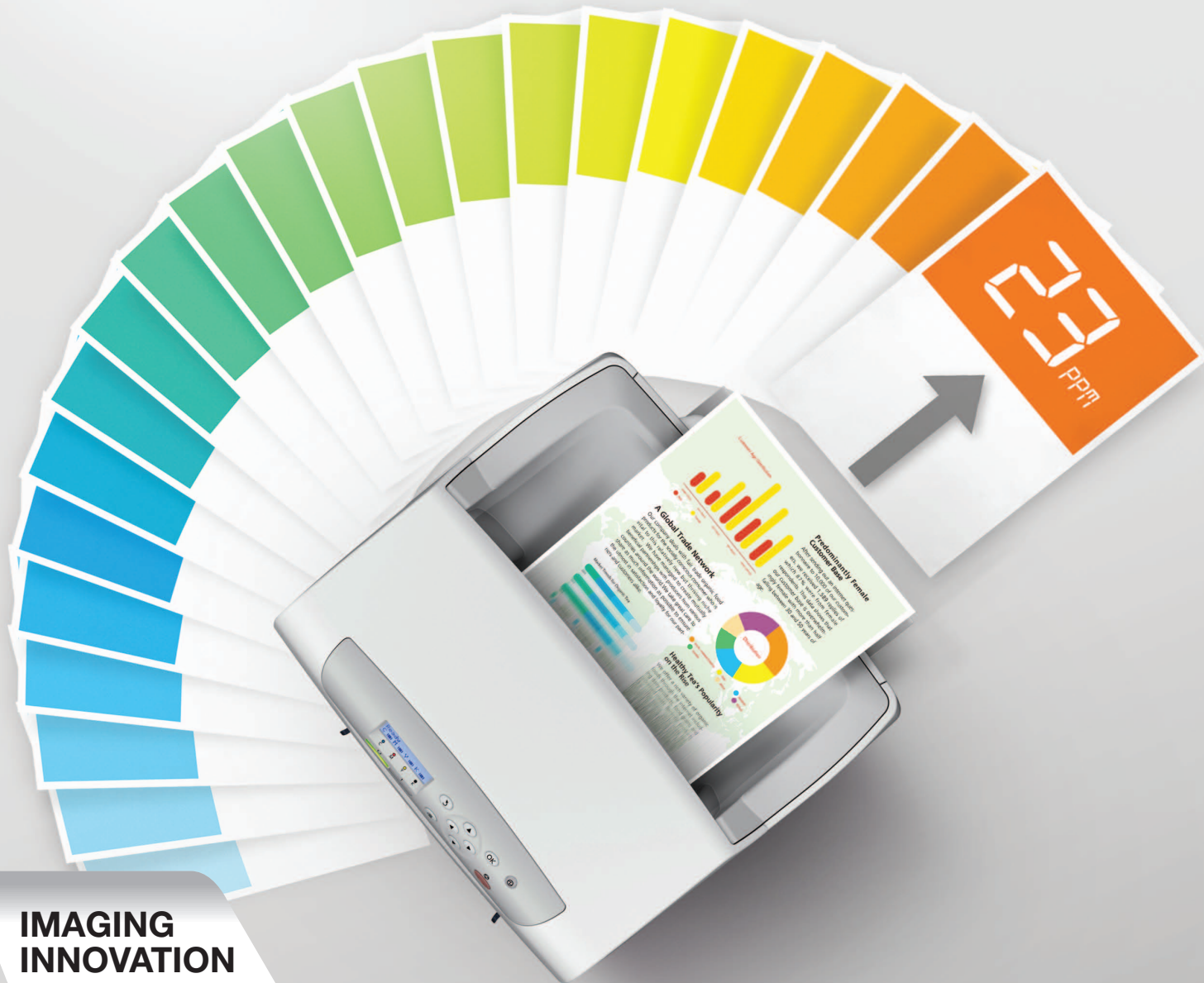


## The faster way

to higher efficiency, productivity and  
lower costs in business printing



### IMAGING INNOVATION

When it comes to business printing, the Epson AcuLaser™ C2900N puts you in the winner's seat for better productivity and cost savings. With its advanced and efficient printing and toner technologies, can always count on high quality output and higher reliability to put your business ahead in the game.

- **Built for Performance**

Excellent connectivity and networking options, extremely fast warm-up time and fast print speed of up to 23ppm in black or colour

- **Colour Vibrancy and High Quality Printing**

Enjoy consistently rich image quality and crisp black text with Epson AcuBrite™ toners.

- **Cost and Time Efficiency**

Double pack black toner cartridges, double-sided printing\* and auto-switching to mono printing when colour toner is depleted help to reduce running costs and time spent on replacing consumables.

\* with optional duplex unit



## IMAGING INNOVATION

### Boost business productivity with the Epson AcuLaser™ C2900N

Backed by advanced printing technology that really delivers, the Epson AcuLaser™ C2900N sets the new standard for world-class quality output and efficiency that enhances your business productivity. What you get is reliable performance that never fails to impress.

#### Built for Business Performance

The Epson AcuLaser™ C2900N warms up in under 15.5 sec and cruises along at up to 23ppm for both black or colour. This speedy performance is matched by its impressive monthly duty cycle of up to 40,000 pages per month, superb connectivity with Hi-speed USB and Gigabit Ethernet with IPv6 support.



Print



Ethernet

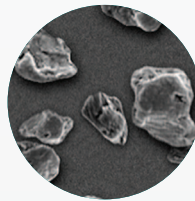
#### Colour Vibrancy and High Quality Printing



Epson AcuBrite™ toner ensures uniform particles and wax distribution for outstanding colour and image quality. Through this unique printing technology, you get superb clarity, sharpness and outstandingly crisp and bold black text that lasts.

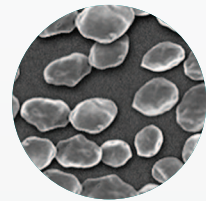
#### Uniform Image Quality

Conventional Toner



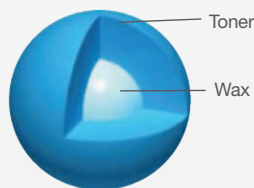
Average particle size: 8.0 micron  
Particle shape: non-uniform

Epson AcuBrite™ Toner

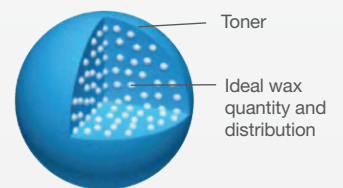


Average particle size: 5.8 micron  
Particle shape: uniform

#### Uniform Distribution of Pigment and Wax



Conventional Toner



Epson AcuBrite™ Toner

The uniform distribution of wax provides the optimum amount of wax required for fusion as well as outstanding transparency for OHP presentations.

## Cost and Time Efficiency

With smart features such as double-sided\*, multiple up and sample printing, Epson AcuLaser™ C2900N helps to reduce paper consumption and wastage. You also have the option of auto-switching to monochrome printing when colour toners are depleted, and double pack-black toner cartridges for lower running costs and minimum downtime.

\*with optional duplex unit

## Secure Print

User-friendly software available through the LCD panel provides greater information and network security. Print jobs can be stored in the printer's memory for later printing. Epson 'Secure Print' then allows for password setting and input to access sensitive information stored in the printer memory\*.

\*when optional RAM is installed

- IP Filtering controls user access to printer
- 'Reserve Job' option requires password to commence stored print job
- 'Header/Footer/Watermark' functions help to avoid mistaken pickups
- 'Port Lock' function controls access via network or USB ports
- 'Printer Lock' function protects printer and network settings from unauthorised changes

## Media Flexibility

Enjoy freedom from media constraints with support for an expanded range of media:

- 60 to 216 gsm in A5/A4/Legal sizes
- Hole punched paper, glossy paper, labels and envelopes
- Holds up to 501 sheets with optional 250sheet cassette

This is especially beneficial for general document printing in government, corporate and SOHO environments, or for applications that produce intensive colour charts, posters and stamps.

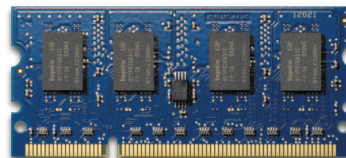
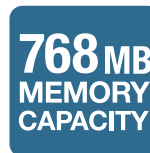


## Increase Productivity as Your Business Expands

Geared to meet increasing business demands in fast paced organisations, the Epson AcuLaser™ C2900N can be fitted with an optional 250-sheet paper cassette, increasing the total paper capacity to 501 sheets. This cuts down on time needed to replenish paper supply.



Improve workgroup productivity by expanding on-board memory to 768MB for more efficient buffering of print jobs. The optional Duplex Unit improves printing efficiency and reduces paper wastage.



## Save Energy, Save the Environment



C2900N is Energy Star certified, which helps conserve energy and protect our environment.

## Partners in Perfection

### Epson Perfection™ V33 Scanner

Achieving high quality scans is a snap with the Epson Perfection V33. Its 4800 dpi optical resolution captures every photo, document, 3D object and oversized artworks with amazing clarity and detail.



### Epson EB-G5000 Series Projectors

Experience brilliant image quality with the world's number 1 projectors\*. High powered projection solutions that offer reliability and outstanding performance in every environment. Epson 3LCD projectors offer superior colour luminance, producing vivid and sharp images.



\*Source: Futuresource Consulting

**SPECIFICATIONS**



\*1 The measuring method complies with ISO/IEC19798 and ISO/IEC24712.

\*2 Life of Drum Cartridge is defined at continuous printing. It varies according to printing conditions.



EPSON and EXCEED YOUR VISION are registered trademarks of Seiko Epson Corporation.

All other product names and other company names used herein are for identification purposes only and are the trademarks or registered trademarks of their respective owners.

EPSON disclaims any and all rights in those marks. Scan/Print samples shown herein are simulations. Specifications are subject to change without notice.

<b>PRODUCT CODE</b>		C11CB74001
<b>PRINTER TYPE</b> PRINTING METHOD RESOLUTION PROCESSOR		Laser Single Pass 600 x 600dpi 400 MHz
<b>PRINT FUNCTION</b> PRINT SPEED FIRST PAGE OUT TIME WARM UP TIME MAXIMUM MONTHLY VOLUME		23ppm / 23ppm (Bk / Cl) Less than 15.5 sec Less than 15.5 sec (from deep sleep mode) 20 sec (from power off to ready) Up to 40,000 pages / month
<b>PAPER HANDLING</b> STANDARD PAPER INPUT SINGLE SHEET FEEDER PAPER SIZE WIDTH LENGTH PAPER WEIGHT STANDARD PAPER CASSETTE PAPER SIZE PAPER WEIGHT MAXIMUM PAPER INPUT PAPER OUTPUT STANDARD / MAXIMUM		251 sheets (Standard Paper Cassette: 250 sheets + Single Sheet Feeder: 1 sheet) A4, A5, B5, LT, GLT, LGL, EXE, Folio, Envelope (Com #10, Monarch, DL, C5) 76.2 – 220mm 98.4 – 355.6mm 60 – 216g/m2 A4, A5, B5, LT, GLT, LGL, EXE, Folio, Envelope (Com #10, Monarch, DL, C5) 60 – 216g/m2 501 sheets (Standard Paper Cassette: 250 sheets + Optional Paper Cassette: 250 sheets + Single Sheet Feeder: 1 sheet) 150 sheets (face down)
<b>PRINTER INTERFACE</b> STANDARD INTERFACES NETWORK PROTOCOLS		USB 2.0 Hi-Speed Ethernet (10Base-T/100Base-TX/1000Base-TX) TCP/IP: TCP/IPv4, TCP/IPv6, IPsec, DHCP, SNMP v1/v2c/v3, BootP, RARP, HTTP, HTTPS, SMTP, DDNS, AutoIP, Ping, WINS, Bonjour, (mDNS)
<b>MEMORY</b> STANDARD MAXIMUM		256MB 768MB (with optional 512MB module installed)
<b>POWER REQUIREMENTS</b> POWER CONSUMPTION OPERATING SLEEP		365W (Printing, average) 15W (Sleep) / 8W (Deep Sleep)
<b>ENVIRONMENTAL CONDITIONS</b> TEMPERATURE OPERATING STORAGE HUMIDITY OPERATING STORAGE NOISE LEVEL PRINTING READY SOUND PRESSURE		10 – 32°C 0 – 35°C 10 – 85% RH 15 – 80% RH 6.71B (Mono) / 6.79B (Colour) 4.30B Printing mode: 53dB (mono/colour) Ready mode: 28dB
<b>SAFETY AND REGULATIONS</b> ENVIRONMENTAL MEASURES		Conforms to International Energy Star Program Blue Angel Mark (BAM) Compliant
<b>PRINTER DRIVER / UTILITIES</b> OS SUPPORT UTILITIES		Windows® XP (32bit/64bit) / Vista (32bit/64bit) / Server 2003 (32bit/64bit) / Server 2008 (32bit/64bit) / Server 2008 R2 (64bit) / Windows® 7 (32bit/64bit) Mac OS 10.4.11 or later Red Hat Enterprise Linux 4 WS/5 Client (x86) SUSE Linux Enterprise Desktop 10/11 (x86) EpsonNet Config (Web), Setup Assistance, IP Address Setup Tool, Printer Status Monitor
<b>PRINTER CONTROL LANGUAGE EMULATION</b>		Adobe Postscript 3, PCL 5c/6 Emulation
<b>CONSUMABLES</b> TONER CARTRIDGE YELLOW TONER CARTRIDGE MAGENTA TONER CARTRIDGE CYAN TONER CARTRIDGE BLACK DOUBLE TONER CARTRIDGE PACK BLACK DRUM CARTRIDGE (CMYK) FUSER UNIT		<b>PAGE YIELD</b> 2,500 *1 3,000 *1 6,000 (2 x 3,000) *1 36,000 *2 50,000 <b>ORDER CODE</b> C13S050627 C13S050628 C13S050629 C13S050630 C13S050631 C13S051211 C13S053043
<b>OPTIONS</b> DUPLIX UNIT 250-SHEET PAPER CASSETTE UNIT 512MB ADDITIONAL MEMORY		C12C802661 C12C802671 C12C822121