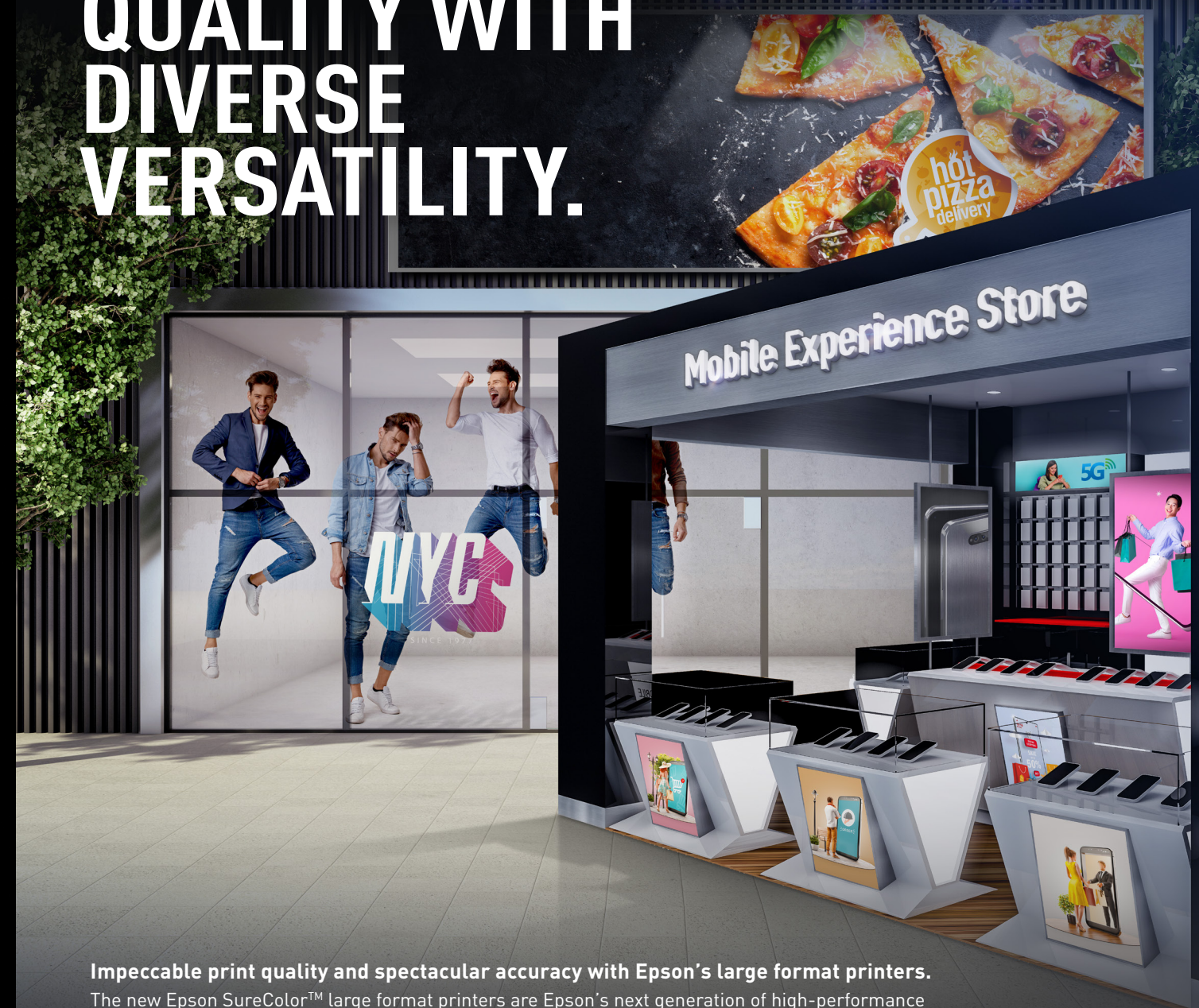


EPSON

SURECOLOR SIGNAGE PRINTERS
RANGE BROCHURE

EPSON

BEST-IN-CLASS
QUALITY WITH
DIVERSE
VERSATILITY.



Impeccable print quality and spectacular accuracy with Epson's large format printers.

The new Epson SureColor™ large format printers are Epson's next generation of high-performance signage printers, which incorporate the latest printing technologies to be Epson's most advanced signage printers to date. The printers come with the new sophisticated precision media feeding system, high-performance printheads, and a myriad of advanced features that enable them to reliably meet the most demanding jobs while minimising operation costs.



IT'S IN THE DETAILS.

ULTRACHROME
UV

EPSON ULTRACHROME
GS3

EPSON ULTRACHROME
GS3
RED

ULTRACHROME
RS

Epson Edge Print Pro



Exceptional Print Quality

Epson's Industry-leading Piezo printhead technology provides superior text and image sharpness across a wide range of ink and media.

Superb Reliability

High-volume printing is made ultra-reliable with an advanced precision media feeding system* to ensure minimal downtime.

*Applicable to SureColor S & R Series.

Engineered For Convenience

Epson's solutions such as Epson Cloud Solution PORT and Epson Edge Print helps with ease of use and remote management during operations.

Find out more at <https://www.epson.com.sg/gobig-signage>

epsonsg EpsonSingapore EpsonSoutheastAsia Epson Singapore epsonsingapore

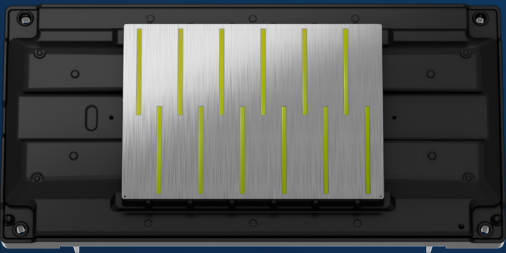
Epson Singapore Pte Ltd 438B Alexandra Road, Block B Alexandra Technopark, #04-01/04, Singapore 119968. Tel: (65) 6586-5500
Epson Customer Care Center 100G Pasir Panjang Road, #01-09 Interlocal Centre, Singapore 118523. Epson Helpdesk: 800 120 5564. Please refer to www.epson.com.sg/contact for opening hours.

Brilliance In Reliability

Leading the next generation of high-performance signage printers, the Epson SureColor printers are engineered with advanced functions and the latest printing technologies. With printheads tailor-made to cater to each ink type, the SureColor printers produce impeccable text and image sharpness across a wide range of ink and media with micron-level precision and reliability.

Epson's Piezo Technology

Utilising Epson's Piezo Technology, the SureColor printers can prolong printhead longevity thanks to their heatless system, providing reliable long-term operation. The piezo element also acts as a highly-sensitive sensor that detects irregularities, such as interrupted firing by an air bubble or if rising ink viscosity is causing issues, all within milliseconds.



R-series printhead.

Superior Ink Technology

Advanced ink technology from Epson brings a wide gamut of colours that comes with high image quality. The inks are optimised to perform high quality images and reduce machine downtime.



Connect. Optimise. Grow

At Epson, we understand that having real-time information at your fingertips is vital to your daily operations. This is why we have introduced the Epson Cloud Solution PORT, an intuitive cloud-based remote monitoring software. Monitor and manage your fleet of printers effectively across multiple sites, or a single site. Epson Cloud Solution PORT can be accessed from multiple devices including PCs, smartphones and tablets.



Epson Cloud Solution
PORT

Fleetwide Printer Management

When managing printer efficiency and usage, intelligent and intuitive production monitoring is essential for maximising productivity, connectivity, and growth. A clear and simple dashboard, drawing from vast amounts of usage data, provides the insight needed to make critical business decisions.

Remote Monitoring System

Designed with simplicity and security in mind, the Epson Cloud Solution PORT provides a live view of your printer fleet production, equipment utilisation, and service information to better manage efficiency and optimise your Epson printing workflow.



Remote Monitoring¹

View live status of the entire printer fleet, output production rates, printer status, errors, and equipment utilisation.



Production Efficiency Tracking & Reporting

Run reports to view total production efficiency, uptime, and printer usage.



Dashboard Tracking

Create in-shop dashboard to internally communicate key performance metrics to employees.



Secure & Encrypted

Data stream and cloud are encrypted end-to-end to protect customers' privacy and usage data.



Mobile Access, No App Needed!

Optimised mobile website allows for easy, remote tracking of printer fleet while on the go.



Expedited Service Response

Epson support helps reduce downtime with fast, remote troubleshooting.

¹ All features of this system require an active internet connection and use of a supported browser.

PRINT APPLICATIONS FOR DIFFERENT SCENARIOS



ECO SOLVENT

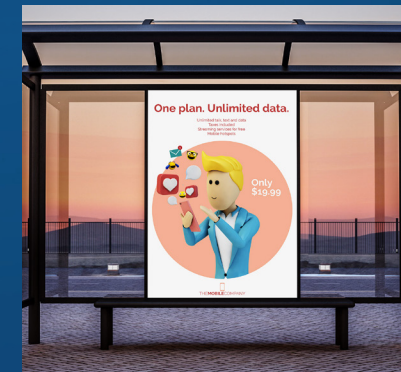
The eco-solvent inks are generally more suitable for general printing of indoor signages (i.e. on PVC material), offering a wide colour gamut and competitive cost per print.



Retail Signage



Event & Exhibition



Backlit



Window Graphic



Window Sticker



RESIN

The resin inks are recommended for unique printing applications. Because of 'instant lamination' and higher scratch durability finishing, the inks are more suitable for applications requiring such features.



Outdoor Signage



Vehicle Wrap



Wallpaper



Canvas

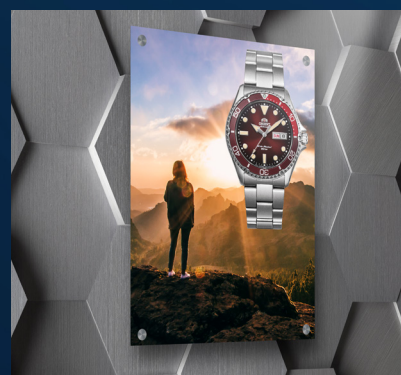


Textile



UV

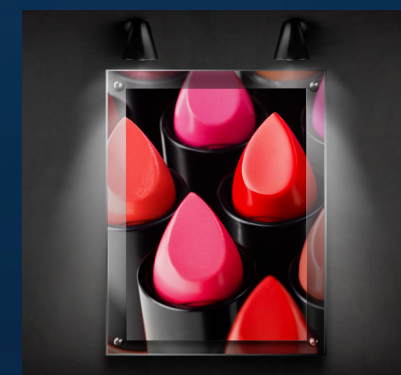
UV printing uses a unique drying method compared to the traditional inks where instead of evaporation, they are cured using high-intensity UV lights. This allows operators to use UV printing on virtually any substrate, catering to a wider range of media.



Stainless Steel



Wall Display Tile Printing



Acrylic Frame



Glass Facade



Wooden Panel

Versatility meets convenience, fulfilling your different printing needs effortlessly.

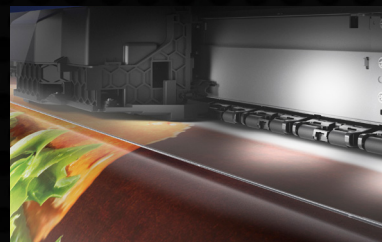


ECO-SOLVENT

QUITE POSSIBLY THE BEST ECO-SOLVENT SIGNAGE PRINTERS EVER

Epson SureColor S-Series eco-solvent printers offer exceptional productivity, outstanding image quality, and iron-clad reliability.

With lightning-fast printing speeds and lamination capability, the SureColor S-Series printers empower you to turn around jobs fast. Additionally, the automated printer maintenance system lets you focus on printing, not on the printer.

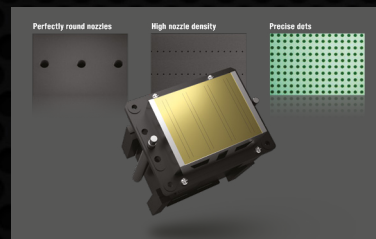


A precision media feeding and take-up system

Ensures virtually any roll media feeds accurately, nearly eliminating buckling and skewing.

Patented technology

Deliver increased speed, rock-solid reliability and unbeatable image quality for customer-pleasing results every time.



GREENGUARD Gold Certified

With low emission and VOC, GS3 inks are safe for indoor use.

64"

GS3
ULTRACHROME
GS3 INK

C M Y K

MAX. INK CAPACITY
PER COLOUR
700ml

Entry-level sign printer SC-S40670



- Outstanding quality at affordable cost of ownership
- Printing speeds of up to 58.4m² per hour
- Single PrecisionCore™ TFP® Printhead

64"

GS3
ULTRACHROME
GS3 INK

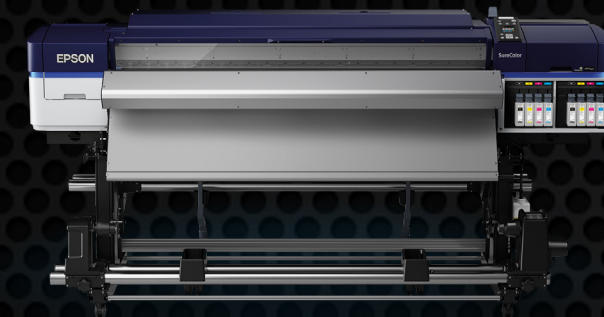
C M Y K

+

C M Y K

MAX. INK CAPACITY
PER COLOUR
700ml

Productive sign printer SC-S60670



- Printing speeds of up to 95.3m² per hour
- High productivity with Dual PrecisionCore™ TFP® Printhead
- Fabric Wiping System dramatically reduces manual maintenance

64"

GS3
ULTRACHROME
GS3 INK

C M Y K

LC LM LK OR

R + optional W S

MAX. INK CAPACITY
PER COLOUR
700ml*

Versatile sign printer SC-S80670



- Widest colour gamut to meet most demanding jobs with 10-colour configuration
- Epson UltraChrome™ GS3 ink Technology with Red - Greenguard Gold certified for low chemical emissions
- Amazing quality and detail with smooth gradations, accurate skin tones and sharp, grain-free images

* 700ml for all colours; except 600ml for White & 350ml for Metallic Silver.

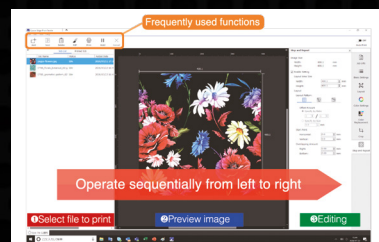


ECO-SOLVENT

REDUCE INK COSTS WITH BULK-INK EDITIONS

These printers break new ground in sign printing by dramatically reducing ink costs. They deliver fast print speeds, best-in-class 98.2%¹ PANTONE certification² and lamination along with the convenience and savings of bulk ink.

Innovative bulk-ink packs offer low ink cost, so you can print more at a lower ink cost per square foot. Plus, in addition to delivering longer, unattended printing, they reduce plastic waste compared to traditional cartridge systems.



Epson Edge Print Pro

Offers a simple and effective tool for production imaging in environments which do not require advanced workflow management.

A first-of-its-kind fabric wiping system

Improves printhead life while automating maintenance to keep your printer running in top form.



High volume 1.5-Litre bulk-ink packs

Save time and money, reduce waste and increase uptime because you have to replace ink less frequently.



64"

GS3
ULTRACHROME
GS3 INK

C M Y K
+
C M Y K
MAX. INK CAPACITY
PER COLOUR
1500ml



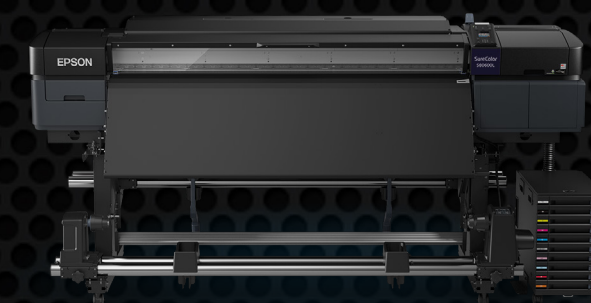
Dual 4-colour bulk-ink sign printer
SC-S60670L

- Dual, 4-colour UltraChrome™ GS3 ink for high productivity
- Greenguard Gold certified for low chemical emissions

64"

GS3
ULTRACHROME
GS3 INK
WITH RED

C M Y K
LC LM LK OR
R + optional W S
MAX. INK CAPACITY
PER COLOUR
1500ml*



10-colour bulk-ink sign printer
SC-S80670L

- Pantone Digital Colour certified for high colour accuracy
- Media Versatility through Auto-Tension control and paper feeding mechanism

* 1,500ml for colour and White, 500ml for Metallic Silver.

20-hours*

of continuous unattended printing

The SureColor S-series printers enable up to 20-hours* of continuous unattended printing with a 50%** less need for replacements therefore enabling operators to attend to other matters.

1.5L
Bulk Ink Packs

offers **2X**
The Ink Capacity



¹ 98.2% coverage of PANTONE PLUS FORMULA GUIDE solid-coated palette on adhesive vinyl media. PANTONE coverage may vary when printed under other conditions.

² PANTONE® certification applies to SC-S80670L only.

For SC-S60670L and SC-S80670L:

* Based on internal simulation of solid colour printing. Actual result could differ based on printing conditions.

**Ink cartridge and waste ink bottle replacement frequency: Approximately 50% less than the S-series cartridge edition (SC-S40670 / S60670 / SC-S80670).



RESIN PRINTING

HIGHLY VERSATILE, HIGH-PERFORMANCE RESIN PRINTERS

Epson SureColor R-Series 64" roll-to-roll printers are the perfect choice for high-volume shops looking for a fast, versatile printing solution. Tackle any signage job with all new, multi-purpose resin ink that delivers outstanding, repeatable colour on a wide range of media, including wallpapers, uncoated papers, and more. Blistering print speeds and immediate lamination boost productivity. Plus, economical bulk ink packs offer increased convenience and reduce the total cost of ownership.

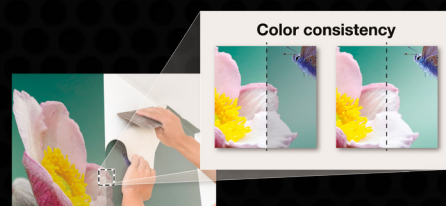


Epson UltraChrome RS resin inks

Dries instantly for highly scratch-resistant prints that you can laminate immediately for faster turnaround.

Instant lamination

Achieve fuss-free instant lamination with our durable water-based inks.



New multi-purpose resin ink

Delivers extremely accurate, reliably consistent, high-quality colour for repeat jobs, brand colours, wall tiling applications and more.

64"

RS3
ULTRACHROME
RS3 INK



MAX. INK CAPACITY
PER COLOUR
1500ml



Standard Resin Printer
SC-R5030

- Outstanding image quality and repeatable colour at production speeds
- Convenient, efficient 1.5-Litre bulk ink packs

64"

RS3
ULTRACHROME
RS3 INK



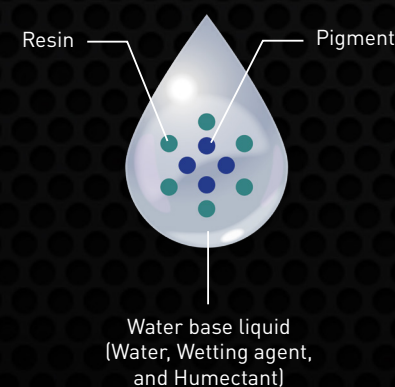
MAX. INK CAPACITY
PER COLOUR
3000ml
(1500ml x 2)



Supersized Bulk Ink Resin Printer
SC-R5030L

- High-quality, colour-accurate output on a variety of media
- Cost-reducing 3-Litre (1.5-Litre x 2 packs) bulk ink system
- Hot swap function reduces printer down time

What is Water-Based Resin



Water Based Resin Inks contain

- Water
- Resin
- Wetting Agent
- Humectant

The UltraChrome RS Ink forms a more uniform layer of ink on the print media, eliminating the existing challenge of diffused reflection from surfaces.

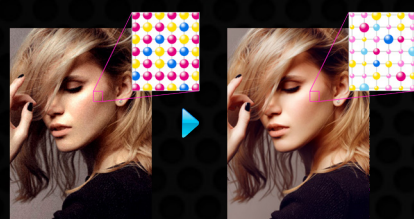




UV PRINTING

EPSON ALL-IN-ONE FLATBED UV PRINTER

With the ability to print directly on a wide variety of rigid substrates up to 80mm thick, the Epson SureColor V7000 flatbed printer offers you a cost-effective solution for expanding your shop's capabilities. Featuring 10-colour UltraChrome UV Ink, including red and grey inks, it produces bright, colourful, tactile high-quality prints with smooth gradation and neutral greys in record time. Plus, the quick media loading and easy alignment, along with intuitive RIP software makes the SureColor V7000 a breeze to use.



Other brands

Epson SC-V7000
with Variable Droplet

Epson Ultrachrome UV Inks

With up to 10 colour ink sets that provide low graininess and banding, the UV flatbed printer provides highly vivid and consistent prints with its striking reds and stunning colours.

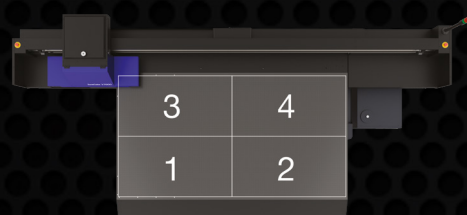
Wide media usage

Automatic detection and adjustment to accommodate media of up to 80mm thick. The four zone vacuum can easily hold media in place securely.



White ink and varnish

Producing rich, high-quality prints on a variety of materials, the White ink and varnish enable operators to print glossy finishes, various textures, and more.



2.50m
by
1.25m

UV
ULTRACHROME
UV INK



MAX. INK CAPACITY
PER COLOUR
1000ml

Epson MicroPiezo
Print Head

LED UV lamp

Automatic Sensor

- Automatic measurement of media thickness
- Jam detection sensor

Signal tower lamp

Shows the printer status at a glance

UltraChrome
UV ink

Layout pins

Proximity
Sensor

UL and CE
safety standard
certified

Multi Zone Vacuum System

Versatility Redefined

Epson's SC-V7000 reinvents what large format printers can offer allowing businesses to print directly on a wide variety of substrates* up to 80mm media thickness. This includes vinyl, textile, canvas, film, aluminium composite boards and styrofoam boards. The possibilities to create with the SC-V7000 is limitless!



*Some materials will require pre-treatment. Contact Epson to find out more.

SURECOLOR
SIGNAGE
PRINTERS

SOLVENT PRINTING

MODEL NUMBER

PRINT
Technology

Printhead

Maximum Resolution

Print Speed

INK
Ink Type

Colour

Ink Capacity

Ink Case

MEDIA HANDLING
Paper Path

Maximum Roll Diameter/Weight

Maximum Reel Diameter/Weight

CONNECTIVITY
Interface

Printer Language

Memory

ENVIRONMENTAL CHARACTERISTICS
Temperature

Humidity

DIMENSIONS & WEIGHT
Printer Dimension (W) (mm) - Storage

Printer Dimension (D) (mm) - Storage

Printer Dimension (H) (mm) - Storage

Weight

SYSTEM
Win PC System Requirement

Mac System Requirement



SC-S40670

PrecisionCore Inkjet,
Variable-Sized Droplet Technology

PrecisionCore TFP Printhead

1440 x 1440 dpi

2 Pass – Up to 29.4 m²/h (720 x 720 dpi)
4 Pass – Up to 16.6 m²/h (720 x 720 dpi)
6 Pass – Up to 11.0 m²/h (720 x 1440 dpi)

Epson UltraChrome
GS3 ink

Cyan, Magenta,
Yellow, Black

700ml

Ink Cartridge

Friction Feed

Max. 250mm / 45kg

Max. 200mm

Hi-Speed USB 2.0, 100BASE-TX/1000BASE-T

ESC/P

Printer: 512MB
Network: 128MB

Operating: 15°C to 35°C
(20°C to 32°C recommended)

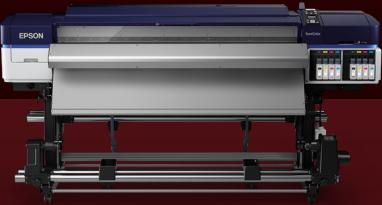
Operating: 20 – 80%
(40 to 60% recommended)

2620

880

1338

Approx. 279kg (without ink)



SC-S60670

PrecisionCore Inkjet,
Variable-Sized Droplet Technology

PrecisionCore TFP Printhead

1440 x 1440 dpi

2 Pass – Up to 52.3 m²/h (720 x 720 dpi)
4 Pass – Up to 31.6 m²/h (720 x 720 dpi)
6 Pass – Up to 20.7 m²/h (720 x 1440 dpi)

Epson UltraChrome
GS3 ink

Cyan, Magenta,
Yellow, Black

700ml

Ink Cartridge

Friction Feed

Max. 250mm / 45kg

Max. 200mm

Hi-Speed USB 2.0, 100BASE-TX/1000BASE-T

ESC/P

Printer: 512MB
Network: 128MB

Operating: 15°C to 35°C
(20°C to 32°C recommended)

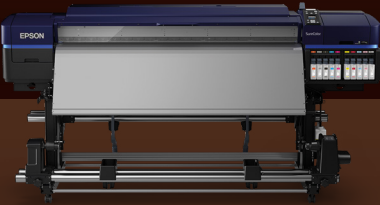
Operating: 20 – 80%
(40 to 60% recommended)

2620

972

1338

Approx. 291kg (without ink)



SC-S80670

PrecisionCore Inkjet,
Variable-Sized Droplet Technology

PrecisionCore TFP Printhead

1440 x 1440 dpi

2 Pass – Up to 52.3 m²/h (720 x 720 dpi)
4 Pass – Up to 26.8 m²/h (720 x 720 dpi)
6 Pass – Up to 18.2 m²/h (720 x 1440 dpi)

Epson UltraChrome
GS3 ink with Red

Cyan, Magenta, Yellow, Black,
Light Cyan, Light Magenta, Light Black,
Orange, Red, White, Metallic Silver

700ml
Except White (600ml), Metallic Silver (350ml)

Ink Cartridge

Friction Feed

Max. 250mm / 45kg

Max. 200mm

Hi-Speed USB 2.0, 100BASE-TX/1000BASE-T

ESC/P

Printer: 2GB
Network: 128MB

Operating: 15°C to 35°C
(20°C to 32°C recommended)

Operating: 20 – 80%
(40 to 60% recommended)

2620

880

1338

Approx. 284kg (without ink)



SC-S60670L

PrecisionCore Inkjet,
Variable-Sized Droplet Technology

PrecisionCore TFP Printhead

1440 x 1440 dpi

2 Pass – Up to 52.3 m²/h (720 x 720 dpi)
4 Pass – Up to 31.6 m²/h (720 x 720 dpi)
6 Pass – Up to 20.7 m²/h (720 x 1440 dpi)

Epson UltraChrome
GS3 ink

Cyan, Magenta,
Yellow, Black

1500ml

Ink Pack

Friction Feed

Max. 250mm / 45kg

Max. 200mm

Hi-Speed USB,
100BASE-TX/1000BASE-T

ESC/P

Printer: 512MB
Network: 128MB

Operating: 15°C to 35°C
(20°C to 32°C recommended)

Operating: 20 – 80%
(40 to 60% recommended)

2766

2766

1671

Approx. 331kg (without ink)



SC-S80670L

PrecisionCore Inkjet,
Variable-Sized Droplet Technology

PrecisionCore TFP Printhead

1440 x 1440 dpi

2 Pass – Up to 52.3 m²/h (720 x 720 dpi)
4 Pass – Up to 26.8 m²/h (720 x 720 dpi)
6 Pass – Up to 18.2 m²/h (720 x 720 dpi)

Epson UltraChrome
GS3 ink with Red

Cyan, Magenta, Yellow, Black,
Light Cyan, Light Magenta, Light Black,
Orange, Red, White, Metallic Silver

1500ml

Ink Pack

Friction Feed

Max. 250mm / 45kg

Max. 200mm

Hi-Speed USB,
100BASE-TX/1000BASE-T

ESC/P

Printer: 2GB
Network: 128MB

Operating: 15°C to 35°C
(20°C to 32°C recommended)

Operating: 20 – 80%
(40 to 60% recommended)

2766

1090

1671

Approx. 326kg (without ink)

EPSON Edge Print - OS: Windows 7 x64 SP1, 8 x64, 8.1 x64, 10 x64 - CPU: Multicore processor (Recommend: 3.0GHz or later) – Memory: 8GB or more free space – Storage: 50GB or more free space – Monitor: 1280 x 1024 or more
EPSON Edge dashboard – OS: Windows 7 x32/64 SP1, 8 x64, 8.1 x64, 10 x64 – CPU: Multicore processor 3.0GHz (Recommend: Intel Core i5 3.4GHz or later) – Memory: 4GB or more free space – Storage 2GB or more free space – Monitor: 1280 x 1024 or more

EPSON Edge dashboard – OS: Mac OS X(10.7) or later – CPU: Multicore processor 3.0GHz (Recommend: Intel Core i5 3.4GHz or later) – Memory: 4GB or more free space – Storage 2GB or more free space – Monitor: 1280 x 1024 or more

SURECOLOR
SIGNAGE
PRINTERS

RESIN PRINTING

MODEL NUMBER

PRINT Technology
Printhead
Maximum Resolution
Print Speed

INK Ink Type

Colour

Ink Capacity

Ink Case

MEDIA HANDLING Paper Path

Maximum Roll Diameter/Weight

Maximum Reel Diameter/Weight

CONNECTIVITY Interface

Printer Language

Memory

ENVIRONMENTAL CHARACTERISTICS Temperature

Humidity

DIMENSIONS & WEIGHT Printer Dimension (W) (mm) - Storage
--

Printer Dimension (D) (mm) - Storage

Printer Dimension (H) (mm) - Storage

Weight

SYSTEM Win PC System Requirement
--

Mac System Requirement



SC-R5030



SC-R5030L

PrecisionCore Inkjet, Variable-Sized Droplet Technology	
PrecisionCore TFP Printhead	
1200 x 2400 dpi with 600 x 600 dpi 8 Half Tone layers	
Adhesive Vinyl, Paper/Other: 9 Pass Production 15.1 m²/h Banner, Non-woven Wallpaper: 6 Pass Production 21.0m²/h Textile: 14 Pass Production 9.5 m²/h Film: 26 Pass Production 5.2 m²/h	
UltraChrome RS Ink	
Cyan, Magenta, Yellow, Black, Light Cyan, Light Magenta	
1500ml	1500ml x 2
Ink Supply Unit	
Friction Feed	
Max. 250mm / 45kg	
Max. 200mm / 45kg	
USB (Hi-speed USB), 100BASE-TX/1000BASE-T	
ESC/P	
2GB	
Operating: 15°C to 30°C (20°C to 32°C recommended)	
Operating: 20 – 80% (40 to 60% recommended)	
2949	
1045	
1774	
Approx. 425kg (without ink)	Approx. 449kg (without ink)
EPSON Edge Print - OS: Windows 7 x64 SP1, 8 x64, 8.1 x64, 10 x64 - CPU: Multicore processor (Recommend: 3.0GHz or later) – Memory: 8GB or more free space – Storage: 50GB or more free space – Monitor: 1280 x 1024 or more	
EPSON Edge dashboard – OS: Mac OS X[10.7] or later – CPU: Multicore processor 3.0GHz	

SURECOLOR
SIGNAGE
PRINTERS

UV PRINTING

MODEL NUMBER

PRINT Technology
Printhead
Maximum Resolution
Print Speed

INK Ink Type

Colour

Ink Capacity

Ink Case

MEDIA HANDLING Paper Path

Maximum Media Size

Maximum Media Thickness/Weight

CONNECTIVITY Interface

Printer Language

Memory

ENVIRONMENTAL CHARACTERISTICS Temperature

Humidity

DIMENSIONS & WEIGHT Printer Dimension (W) (mm) - Storage
--

Printer Dimension (D) (mm) - Storage

Printer Dimension (H) (mm) - Storage

Weight

EPSON Edge dashboard – OS: Windows 7 x32/64 SP1, 8 x64, 8.1 x64, 10 x64 – CPU: Multicore processor 3.0GHz (Recommend: Intel Core i5 3.4GHz or later) – Memory: 4GB or more free space – Storage 2GB or more free space – Monitor: 1280 x 1024 or more – UV Flatbed Controller: Win8/10 64bit, 8GB M, 250GB SSD, USB 3.0

(Recommend: Intel Core i5 3.4GHz or later) – Memory: 4GB or more free space – Storage 2GB or more free space – Monitor: 1280 x 1024 or more



SC-V7000




MicroPiezo Inkjet, Variable-Sized Droplet Technology	
MicroPiezo Printhead	
720 x 1440 dpi	
Colour High Speed – Up to 43.1 m²/h (360 x 720 dpi) Speed – Up to 23.2 m²/h (720 x 720 dpi) Production – Up to 15.3 m²/h (720 x 720 dpi) Quality – Up to 10.5 m²/h (720 x 1080 dpi) High Quality – Up to 4.8 m²/h (720 x 1440 dpi)	
Epson UltraChrome UV Ink	
Cyan, Magenta, Yellow, Black, Light Cyan, Light Magenta, Grey, Red, White, Varnish	
1000ml	
Ink Bottle	
N/A	
Max. 2500 x 1250mm	
Max. 80mm / Max. 50kg/m² (non-concentrated) Suction System User Selectable 4 Zones (X Axis: 2 Zones. Y Axis: 2 Zones)	
Super-Speed USB (Type-B)	
N/A	
N/A	
Operating: 15°C to 35°C (20°C to 32°C recommended)	
Operating: 20 – 80% (40 to 60% recommended)	
4635	
2768	
1730	
Approx. 1,370kg (with ink cartridges)	
EPSON Edge dashboard – OS: Windows 7 x32/64 SP1, 8 x64, 8.1 x64, 10 x64 – CPU: Multicore processor 3.0GHz (Recommend: Intel Core i5 3.4GHz or later) – Memory: 4GB or more free space – Storage 2GB or more free space – Monitor: 1280 x 1024 or more – UV Flatbed Controller: Win8/10 64bit, 8GB M, 250GB SSD, USB 3.0	
(Recommend: Intel Core i5 3.4GHz or later) – Memory: 4GB or more free space – Storage 2GB or more free space – Monitor: 1280 x 1024 or more	

SIGNAGE
CONSUMABLES
& OPTIONS

CONSUMABLES

OPTIONS

PRINTER MODELS

SC-S40670 / SC-S60670		SC-S80670		SC-S60670L	
					
Ink Capacity	Product Code	Ink Capacity	Product Code	Ink Capacity	Product Code
Black Ink	700 ml C13T892100	700 ml C13T892100	1500 ml C13T45P100		
Cyan Ink	700 ml C13T892200	700 ml C13T892200	1500 ml C13T45P200		
Magenta Ink	700 ml C13T892300	700 ml C13T892300	1500 ml C13T45P300		
Yellow Ink	700 ml C13T892400	700 ml C13T892400	1500 ml C13T45P400		
Light Cyan Ink		700 ml C13T892500			
Light Magenta Ink		700 ml C13T892600			
Grey Ink					
Light Black Ink		700 ml C13T892700			
Orange Ink		700 ml C13T892800			
Red Ink		700 ml C13T892900			
White Ink		600 ml C13T892A00			
Metallic Silver Ink		350 ml C13T892B00			
Cleaning Liquid	350 ml C13T696000	350 ml C13T696000	700 ml C13T44A500		
Varnish					
Optimiser					
Maintenance Liquid					
Maintenance Parts Kit	C13S210044	C13S210044	C13S210093		
Ink Cleaner	C13T699300	C13T699300	C13T699300		
Cleaning Stick	C13S090013	C13S090013	C13S090013		
Clean Room Wiper	C13S090016	C13S090016	C13S090016		
Waste Ink Bottle	C13T724000	C13T724000	C13S210071		
Wiper Unit					
Cleaning Kit					
Coolant					
Bulk Ink Solution			C12C934611		
Substrate Support System	C12C932361	C12C932361			
Additional Print Drying System	C12C932381	C12C932381	C12C932381		
Option Set* *Includes Bulk Ink Solution, Substrate Support System and Curing heater.	C12C932411	C12C932411	C12C932411		
Media Edge Plate	C12C932411	C12C932411	C12C932411		
Media Spacer					
Head Installation Kit					
Document Pack					

PRINTER MODELS

SC-S80670L		SC-R5030		SC-R5030L		SC-V7000	
							
Ink Capacity	Product Code	Ink Capacity	Product Code	Ink Capacity	Product Code	Ink Capacity	Product Code
1500 ml C13T45P100	1500 ml C13T48D100	1500 ml x 2 C13T45R100	1000 ml C13T49V110				
1500 ml C13T45P200	1500 ml C13T48D200	1500 ml x 2 C13T45R200	1000 ml C13T49V210				
1500 ml C13T45P300	1500 ml C13T48D300	1500 ml x 2 C13T45R300	1000 ml C13T49V310				
1500 ml C13T45P400	1500 ml C13T48D400	1500 ml x 2 C13T45R400	1000 ml C13T49V410				
1500 ml C13T45P500	1500 ml C13T48D500	1500 ml x 2 C13T45R500	1000 ml C13T49V510				
1500 ml C13T45P600	1500 ml C13T48D600	1500 ml x 2 C13T45R600	1000 ml C13T49V610				
			1000 ml C13T49V710				
1500 ml C13T45P700							
1500 ml C13T45P800							
1500 ml C13T45P900							C13T49V810
1500 ml C13T45PA00							C13T49V910
500 ml C13T45PB00							
700 ml C13T44A500			1500 ml C13T45X100				C13T49V010
							C13T49VA10
		1500 ml C13T48D700	1500 ml x 2 C13T45R700				
		1500 ml C13T48D800	1500 ml x 2 C13T45R800				
	C13S210093						
	C13T699300						
	C13S090013	C13S090013	C13S090013				
	C13S090016	C13S090016	C13S090016				
	C13S210071	C13S210071	C13S210071				C13T724000
		C13S210100	C13S210100				
		C13S210103	C13S210103				
							C13S210135
	C12C934631						
	C12C932381						
	C12C932411	C12C935291	C12C935291				
	C12C932411	C12C935321	C12C935321				
		C12C937271	C12C937271				
							C12C935921
							C12C936421