

**PROFESSIONAL-QUALITY PHOTOS,
PRINTED IN STUNNING VIBRANCY.**



Take your creativity to the next level with the Epson SureColor SC-P407. With advanced features you would expect in a professional photo printer, the P407 enables you to explore all your creative aspirations. It uses Epson UltraChrome™ Hi-Gloss 2 ink, an advanced pigment ink set that delivers an ultra-wide range of colours and smooth, vibrant skin tones. Equipped with Epson's multi award-winning Micro Piezo™ printhead, achieve high-quality prints with amazing intricate details and colour transitions that will take your breath away.



Versatile Media Handling Up to 1.3mm Thick Print 5760 dpi Resolution Print onto CD/DVD Wi-Fi iPrint



ENGINEERED FOR BUSINESS

Superior Print Quality

Epson UltraChrome Hi-Gloss 2 ink delivers unprecedented print quality and durability, achieving vibrant and smooth colours.

Unsurpassed Media Flexibility

Supports a full range of media, from fine art and roll papers to panoramas up to 13" by 44", even CD/DVDs.

Advanced Connectivity

Print your photos conveniently through Ethernet or over a wireless network, or straight from mobile devices with Epson iPrint.

Using Epson UltraChrome Hi-Gloss 2 ink, the industry-leading pigment ink technology, the SC-P407 yields beautiful archival prints with an unprecedented glossy look. It supports a full range of media, including glossy, luster, matte, fine art paper and canvas. With images so stunningly brilliant, you'll get rave reviews from the most demanding of critics.



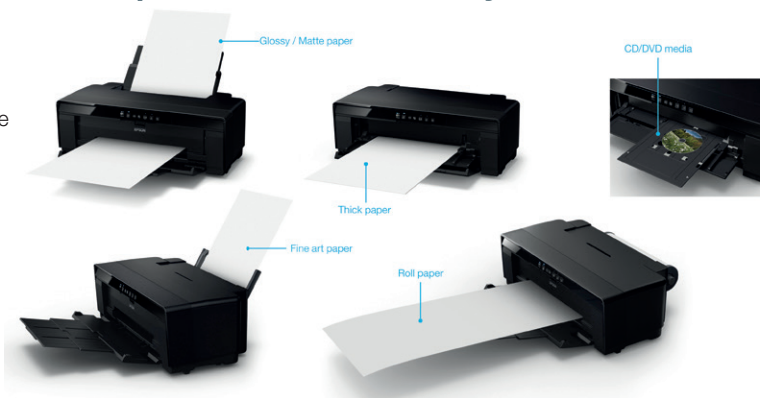
Superior Print Quality

The 8-colour pigment ink set in the SureColor SC-P407 gives you prints that look incredible, prints that will draw admiring comments for years to come. The UltraChrome Hi-Gloss 2 ink set includes red and orange inks to give you a wide range of colours and smooth, vibrant skin tones. Landscape photographers will also love the lush greens and richer blues the ink set delivers.

To ensure your pictures never lose their shine, the High-gloss Microcrystal Encapsulated inks dry instantly and offer immediate colour stability. Your most treasured photographs will be highly smudge, fade and water-resistant. Both photo black and matte black ink cartridges are loaded simultaneously. Depending on the media you select, the P407 switches between the two black inks via the printer driver to match the media in use, achieving ideal large photo print runs at a lower cost per print.



Unsurpassed Media Flexibility

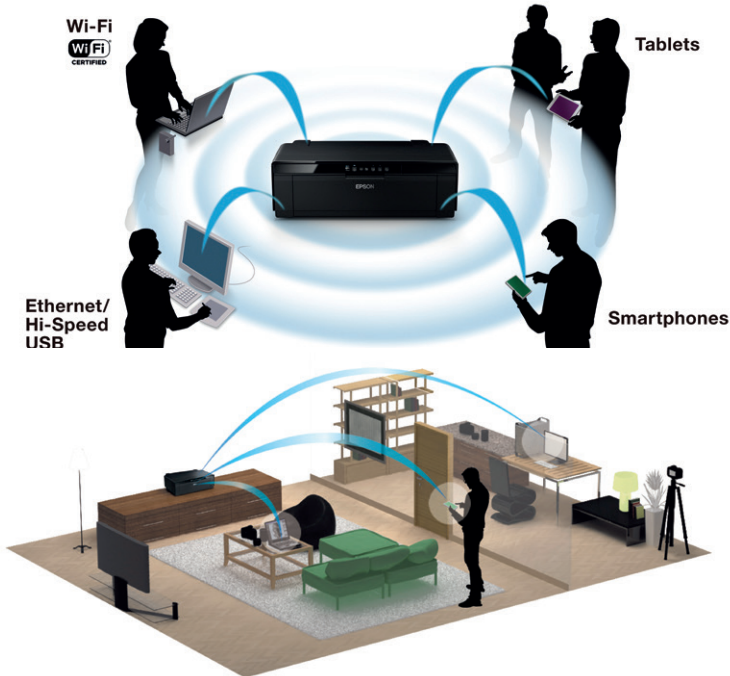


A true professional-quality photo printer, the P407 gives you the opportunity to showcase your best photos in a wide range of sizes and formats. It can print border-free photos from 4" x 6" up to 13" x 19", on anything from glossy, luster, matte and fine art media including canvas, to thick board up to 1.3mm thick. For even greater flexibility, it can also print on inkjet-printable CD/DVDs and roll paper for panoramas up to 13" x 44".

Whether you are printing a series for gallery display, or doing customised printing on DVDs, the P407 has the capability and versatility to deliver outstanding results to fulfil the most demanding requirements.

Advanced Connectivity

The P407 enables you to connect to it the way that suits you best. You can use its built-in 100 Mbit Ethernet for wired networking or the latest Wi-Fi CERTIFIED™ 802.11n technology for the fastest wireless connectivity to date. For direct connection, the P407 offers Hi-Speed USB.



Epson Creative Print

With this app, you can print your photos from Facebook, create personalised CD/DVDs, greeting cards and stationery, or turn your photos into fun colouring book projects.

Epson iPrint

Print from and scan directly to your smart devices or online cloud storage services.

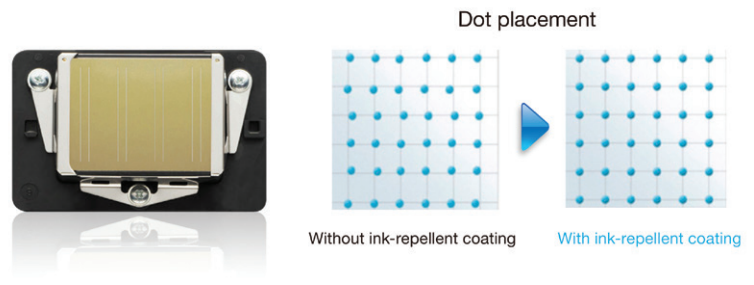
Enhanced Print Mode

Quality comes as standard with the P407's wide range of print modes, giving you control over just about any printing situation you can think of and providing brilliant quality prints every time. Besides boosting blue and green saturation, the PhotoEnhance mode on the P407 automatically enhances shadows, details and colour brightness in the darker areas of images.



Award-winning Printhead Technology

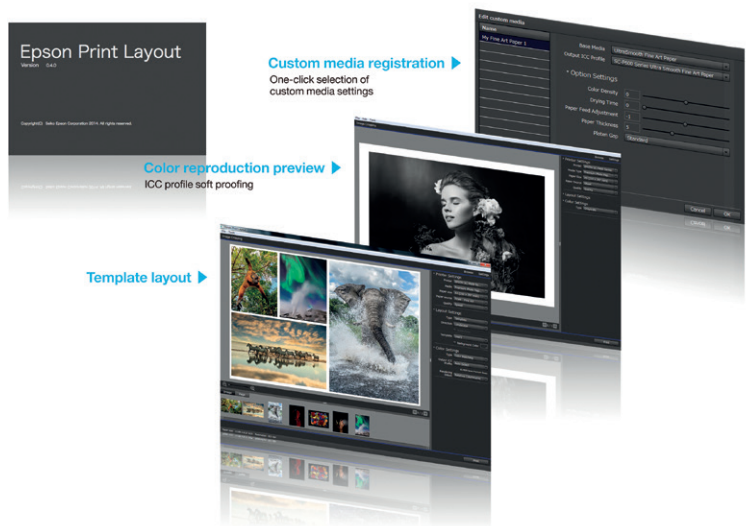
The P407's 8-channel Micro Piezo printhead is a marvel in inkjet technology—and the proof can be found showcased in many of the world's finest art galleries. It creates droplets as small as 1.5 picoliters and places them with remarkable accuracy and precision, offering you unrivalled detail in your prints.



The Micro Piezo printhead also features an ink-repelling coating, which improves print quality and increases reliability. A built-in sensor saves time by enabling automatic printhead alignment and automatic nozzle cleaning, ensuring trouble-free printing while prolonging the life of your printer.

Epson Print Layout Manager

The new Epson Print Layout interface takes the guesswork out of printing, so you can preview images before you print them from applications like Adobe® Photoshop®, Adobe® Lightroom® or Nikon® ViewNX-i—which puts you in charge and saves wasted prints.



PARTNERS IN PERFECTION



Epson Signature Worthy Media

Designed in collaboration with the world's leading creative professionals, Epson Signature Worthy Papers have been developed and tested at the highest levels to work in concert with Epson's industry-leading professional printers and inks.



Perfection™ V800 Photo Scanner

Boasting up to 6400 dpi, with an Optical Density of 4.0 D-max for film scanning and enhanced by energy-efficient ReadyScan LED technology, the V800 photo scanner delivers brilliant high-resolution images with zero warm-up time.

MODEL NUMBER	SC-P407
Printing Technology	
Printing Method	On-demand inkjet (piezo electric), Variable-Sized Droplet Technology
Nozzle Configuration	Black: 180 nozzles for each 2 black ink, Colour: 180 nozzles for each 6 colour ink
Print Direction	Bi-directional printing, Uni-directional printing
LUT	New LUT Technology
Print Quality	
Maximum Resolution	5760 x 1440dpi
Minimum Ink Droplet Volume	1.5 pl (excluding matte black)
Print Speed*	
8" x 10" A4 PGPP with Border	68 sec
11" x 14" A3 + PGPP with Border	102 sec
Ink System	
Name	Epson UltraChrome™ Hi-Gloss 2 ink
Colour	Photo Black, Matte Black, Cyan, Yellow, Magenta, Red, Orange, Gloss Optimiser
Ink Capacity (Initial)	14ml
Ink Capacity (ASP)	14ml
Paper Handling	
Paper Feed Method	Friction Feed
Printing Area (width)	Cut Sheet: 89mm (3.5") - 329mm (13") Roll paper: Width = 210mm - 329mm, 2inch core
Thickness	ASF: Plain Paper: 0.08-0.11mm Genuine Media: 0.08 - 0.30 mm Rear Fine Art Paper path: 0.3 - 0.5mm Front Thick Paper Path: 1.3 mm
ASF Capacity: Max. sheets	A3/USB/B4: 5mm; A4:12mm
Support Operation System	Windows Vista/7/8.1/10 (32/64bit) / MacOS X 10.6 or later (*)
Interface	Wired Connection: Hi-Speed USB, 10BASE-T/100BASE-TX Wireless Connection:Wi-Fi (IEEE802.11 b/g/n)
Memory	256MByte
Control code	ESC/P raster
Environmental Characteristics	
Temperature	Operating: 10°C - 35°C, Storage: -20°C -40°C
Humidity	Operating: 20 - 80% (no condensation), Storage: 5 - 85% (no condensation)
Dimensions / Weight (Main Unit)	
Dimension (W x D x H)	Close: 622mm (W) x 324mm (D) x 219mm (H) Open: 622mm (W) x 797mm (D) x 418mm (H)
Weight	Approx. 12.3kg (without ink cartridge)
Electrical Characteristics	
Rated Power Supply Voltage	AC 100 - 120 V / 220 - 240 V (Rated Voltage will vary depending on area)
Rated Frequency	50 - 60Hz
Power Consumption	Operating: Approx. 20W Sleep: Approx. 1.4W (100 - 120 V) Sleep: Approx. 1.4W (220 - 240 V) Power off: Approx. 0.15W (100 - 120 V) Power off: Approx. 0.3W (220 - 240 V)
Rated Power Supply Current	N/A
Bundled Item	Initial I/C, CD/DVD tray, CD - Dummy, Roll holder assy, Setup guide, Power cable, USB cable Supplement, Warranty
Utility Software	Printer Driver, XPS Driver, Epson Print CD, E-Photo, Epson Easy Photo Print (WW), EpsonNet Config, EpsonNet Setup, EpsonNet Print, Software Updater, Firmware Updater, Adobe ICC Profile, Epson Print Layout, Epson ColourBase2, E-web Print, Uninstaller, Imaging WorkShop, Epson iPrint, Epson Creative Print

(*) Windows 10 & MacOSX 10.11.X is supported.

Dimensions & Weight

SC-P407
Weight: Approx. 12.3kg



Ink Cartridges SC-P407 Product Code

Photo Black	C13T327100
Cyan	C13T327200
Magenta	C13T327300
Yellow	C13T327400
Red	C13T327700
Matte Black	C13T327800
Orange	C13T327900
Gloss Optimizer	C13T327000

*Print speed may vary depending on system configuration, interface, software, document complexity, print mode, page coverage, type of paper used etc.

© 2015 Epson Singapore Pte Ltd. All Rights Reserved. Reproduction in part or in whole, without the written permission from Epson, is strictly prohibited. EPSON and EXCEED YOUR VISION are registered trademarks of Seiko Epson Corporation. All other product names and other company names used herein are for identification purposes only and are the trademarks or registered trademarks of their respective owners. Epson disclaims any and all rights in those marks. Print samples shown are simulations only. Specifications and product availability are subject to change without notice and may vary between countries. Please check with local Epson offices for more information.

Dealer's Stamp

Information correct at time of printing
Printed June 2019

EpsonSingapore @epsongsingapore EpsonSoutheastAsia Epson Singapore
To find out more, visit www.epson.com.sg/inkjet or call **800 120 5564**