

LARGE FORMAT PHOTO PRINTERS
 SURECOLOR SC-P5330/P6000/P6530E/P6530D/P7530/
 P8000/P8530D/P8530DL/P8530DM/P9530/P20070

EPSON

EPSON



SPEARHEADING INDUSTRIAL STANDARDS IN PHOTOGRAPHIC REPRODUCTION.

Impeccable print quality in spectacular accuracy with Epson's P-series printers.

When you require exemplary prints that are top-class in quality, precision, and colour accuracy, trust Epson's P-series printers to weave their magic and deliver just what you need. Equipped with Epson's proprietary PrecisionCore™ MicroTFP printheads, the SureColor P-Series photographic printers revel in their precise and reliable print productivity. Coupled with colour-accurate reproduction using genuine UltraChrome PRO 6 inks, you can now get gallery-quality picturesque prints easily and efficiently.

ENGINEERED FOR good



Highest Standards in Print

The additional grey ink in the UltraChrome PRO 6 inks offers smooth and natural colour gradation in every print.

Installation Flexibility

Flat top design allows for easy placement of printer in challenging and narrow spaces, giving businesses more options in installation.

Boosted Efficiency

Improved print speeds and continuous automatic printing with dual rollers* help ensure high productivity with minimal downtime.

Find out more at www.epson.com.sg/gobig-photo

EpsonSingapore
 EpsonSingapore
 EpsonSoutheastAsia
 Epson Singapore
 EpsonSingapore

Epson Singapore Pte Ltd 438B Alexandra Road, Block B Alexandra Technopark, #04-01/04, Singapore 119968. Tel: (65) 6586-5500
Epson Customer Care Center 100G Pasir Panjang Road, #01-09 Interlocal Centre, Singapore 118523. Epson Helpdesk: 800 120 5564. Please refer to www.epson.com.sg/contact for opening hours.

Information correct at time of printing. Printed June 2024.

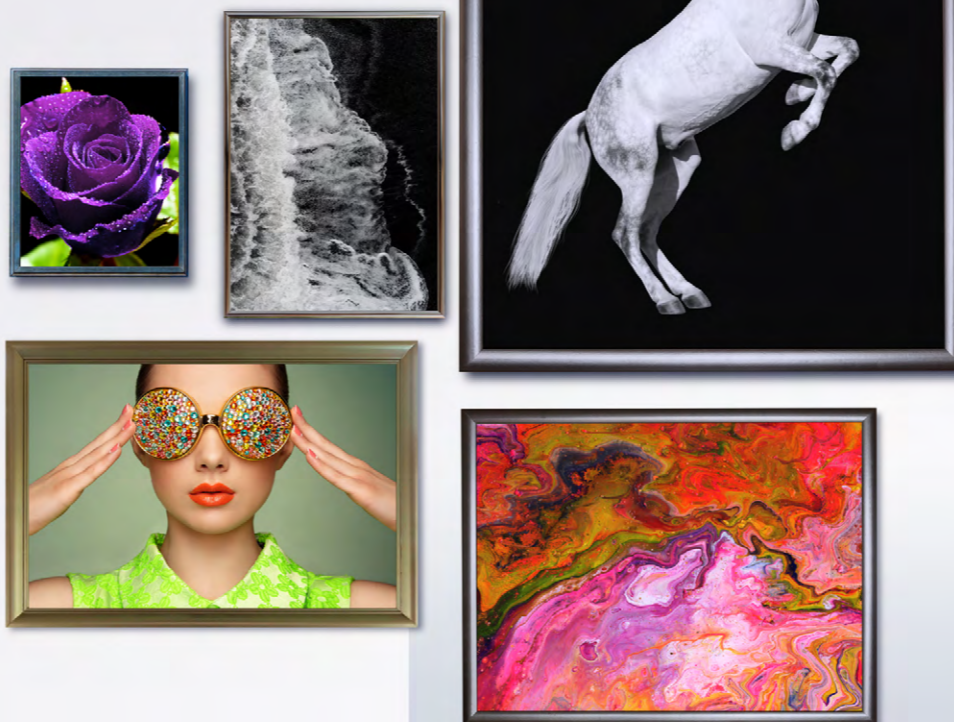
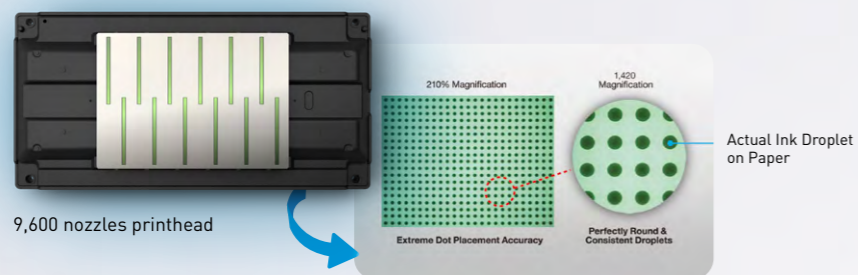
*Selected models.

Experience the Magic

Epson SureColor P-series photographic printers deliver superior detail-accurate images thanks to the latest colour printing technologies. With Epson's PrecisionCore™ Thin Film Piezo (TFP) printhead and UltraChrome™ all-pigment ink sets, uncompromising image consistency and immaculate colour quality are evident in every print. The P-series printers are integrated with industry-leading software solutions, which create seamless work processes that increase efficiency for businesses while meeting the demanding needs of the photo, proofing and graphic arts industry.

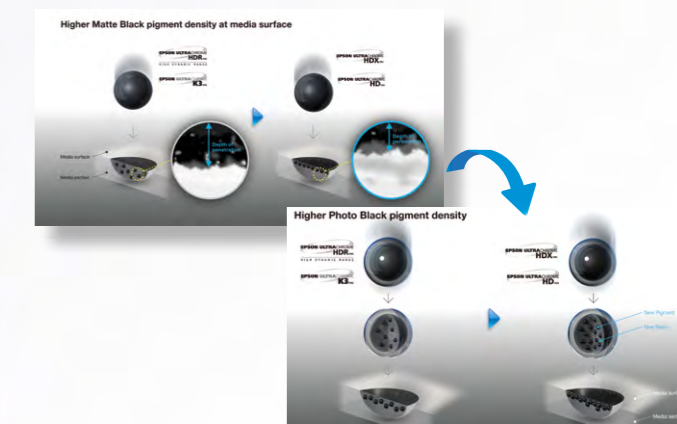
Unmatched Precision

Epson's PrecisionCore™ technology delivers unparalleled colour-matching capability in every print, enabling ultra-precise control of dot size, shape and placements with its revolutionary printhead. The print nozzles can also produce a wide variety of droplet sizes, allowing fine detail and quick filling of larger areas at a single pass.



Latest Generation of Professional-Quality Pigment Inks

Epson's revolutionary Ultrachrome HD inks ensure colour-accurate prints, delivering stunning vibrancy in every photo. With the new addition of Photo Black and Matte Black inks, images are printed with greater colour depth; especially when printing black and white images. In addition, the improved black ink is 1.5 times denser than the previous ink formulation, providing significant improvements to the overall contrast ratio and optical clarity.



Photographic Perfection and Accuracy

More vibrant colour,
 more detailed tonal gradation



There are many variables in the colour reproduction process generated by the Epson P-series and any one of which may affect the quality of the PANTONE colour simulation, including: type of driver or RIP used, type of paper used, type of ink, toner or colourant used, resolution, rendering intent used, dot structures/halftones/screening, print engine and other print settings.

*PANTONE® is the property of Pantone LLC. 99% coverage of PANTONE FORMULA GUIDE solid coated palette based on Epson Proofing Paper White Semi-matte printed with Epson printer driver at 2880x1440dpi. PANTONE coverage may vary when printed with a third-party RIP.

Unparalleled 99% PANTONE Coverage

Utilising a three-level black ink technology that simultaneously employs Black, Light Black and Light Light Black, the innovative Epson UltraChrome pigment inks produce brilliant black density and grey balance in sharp definition. On the media surface, the UltraChrome HDX, HD matte, and photo black inks achieve a much higher pigment density, making sure that the pigments do not penetrate too deep when printing on third-party media.

With the newly-added Violet ink[^], the Ultrachrome HDX ink achieves a wider colour gamut, allowing it to hit spot and client-specific colours accurately, achieving an unparalleled 99% max certified PANTONE coverage*. The various ink configurations also aid in achieving impeccable print quality for both colour and monochrome reproductions.

[^]For selected models.

Epson AccuPhoto HDR Screening



- Wider colour coverage with vivid colour reproduction
- Less chance to print monochrome images



- Wider colour coverage with detailed reproduction of dark-colour tonal gradations



- Decent (more than 4-colour colour coverage with more detailed reproduction of dark-colour tonal gradations)

Advanced ten-colour screening algorithm delivering prints with superior colour and clarity, producing extremely fine blends and subtle photographic transitions.

With Epson AccuPhoto HDR Screening, each print contains extremely accurate highlight-to-shadow details with no visible photographic graininess.

Efficient Workflow Solution

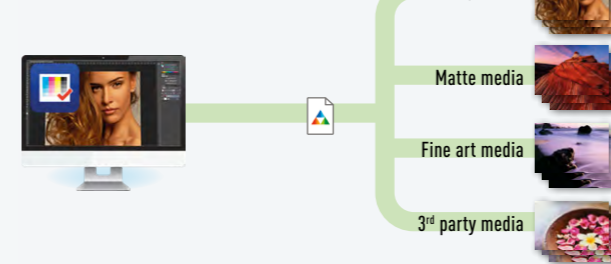
Epson Colour Calibration Utility

To work more efficiently across multiple networked printers, the P-series printers are equipped with Epson Colour Calibration Utility, which measures colour density and concentration, allowing printer network management from a central point. This makes calibrating your printers easier and faster as the derivatives can calibrate their colours based on the base printer by transferring the colour chart, increasing overall productivity.

Printer linearisation



Epson Colour Calibration Utility



Epson Print Layout Software

This plug-in for Adobe Photoshop, Lightroom, and Nikon ViewNX-i includes a set of template layouts and supports ICC soft proofing, colour production, preview, custom media registration and panorama layouts. Along with a set of colour modes, including advanced black and white, to create different finishes and moods. The software operates via intuitive and consistent controls including slider bars and colour wheels for precise and easy adjustments.

Custom media registration

One-click selection of custom media settings

Colour reproduction preview

ICC profile soft proofing

Template layout



Epson Cloud Solution PORT

Managing your printers is made easy and hassle-free with Epson's Cloud Solution PORT. Operators can monitor equipment and printer fleet across different sites from production floor or remotely, on PC or a mobile device without fuss. Boost operational efficiency by controlling, analysing and managing your printer fleet centrally from one intuitive interface while troubleshooting any rare issues.



MEDIA WIDTH

64"

44"

24"

17"

6 COLOURS



SC-P8530D / P8530DL / P8530DM



SC-P6530E / P6530D



9 COLOURS



SC-P8000



SC-P6000



10 COLOURS



SC-P20070



SC-P5330



12 COLOURS



SC-P9530



SC-P7530



Brilliance in Every Print

SC-P5330



A compact photo printer that does not compromise on quality, the SC-P5330 is your perfect solution for impeccable colour reproduction in every print. Utilising Epson's Micro Piezo® printhead and UltraChrome™ PRO 10 all-pigment ink set, every image is dynamic and vibrant, with detailed consistency in spectacular colours.

Consistently Vivid

Experience an upgraded level of image perfection with the SC-P5330, which utilises the UltraChrome™ PRO 10 ink set with Violet for enhanced blue reproduction and a wider colour gamut. This synergises perfectly with the printer's Carbon Black and Black Enhance Overcoat print modes that provide higher levels of black density and increased contrast with smooth gradations.



Dedicated Black Ink Channels

Achieve continuous printing with the dedicated Matte Black and Photo Black ink channels.



Convenience Driven

Epson ColorBase Software

An easy to use colour calibration tool that meets the demands of photographers and graphic arts professionals, Epson ColorBase provides consistent colour quality throughout the printing process.

Supporting colour calibration from print to print and/or printer to printer, Epson ColorBase makes print management easy and reliable. It enhances remote printing applications with critical colour calibration requirements and keeps a history of calibration files for easy reference.

Epson Print Layout Software

With easy access to all major functions, the Epson Print Layout software also helps to manage print layouts and colours with standard bundled industry-leading RIP software. Coupled with high-precision media feed technology, operators are ensured of smooth operation of their printers even when unattended.

Archival Prints

Standing the test of time, our Fine Art prints revel in its archival properties with colours lasting up to 60 years of light fastness*.



*Based on JEITA CP-3901A's standard for the measurement: glossy A4 paper, temperature at 23°C and humidity at 50%.

ULTRACHROME
PRO 10 INK

Media Width
17"

Unrivalled Colour Accuracy



Unleash limitless possibilities with the versatile SC-P6000 and SC-P8000, two state-of-the-art printers that incorporate the latest colour printing technologies. Watch images come to life in top-class accuracy and uncompromising image consistency.

SC-P6000/P8000

Photographic Perfection

With superior colour and clarity, the SC-P6000 and SC-P8000 produce prints with extremely fine blends and subtle photographic transitions. Regardless of the viewing light source, prints reveal a consistent colour balance and vibrancy. Equipped with the innovative PrecisionCore TFP printhead, precise dot placement accuracy ensures dynamic and crisp reproduction in every image.

Advanced Media Handling and Loading

Making printing process quicker and simpler, the Epson SC-P6000 and SC-P8000 printers offer:

Epson ePlaten™ Technology

Highly accurate automatic media loading and handling with fast, spindle-free roll media support for lower percentage of media damage.



Professional Media Handling

Compatible with virtually any media type; in roll or cut sheet, up to 24 or 44 inches wide, as well as an accurate loading of cut-sheet media of up to 1.5 mm thick posterboard. Media is front-loaded via a unique straight-through media path. A printer and driver based media identification and synchronisation system provides virtually error-free media use.

Easy Workflow Integration

Epson Colour Calibration Utility

Working efficiently across multiple networked printers, the SC-P6000 and SC-P8000 come with Epson Colour Calibration Utility, which measures fleet's colour density and concentration. Operators can manage their printer network from a central point, making printer calibration convenient and hustle-free.

Ease of Connectivity

Comes with Hi-Speed USB 2.0, Ethernet connectivity and supported by professional Epson photo graphic drivers for Macintosh® and Windows®. The SC-P6000 and SC-P8000 can also be used with most leading third-party software RIPs and workflows.

Intelligent High-Capacity Ink System

Pressurised ink cartridge technology ensures ink is reliably delivered at all print speeds while dramatically reducing the physical size of the ink cartridges. The ink cartridges are available in capacity up to 700ml.



2.7" LCD for Easy Preview

Preview print jobs and ink capacity quickly and conveniently.



ULTRACHROME
HD^{INK}

Media Width

24"

SC-P6000

Media Width

44"

SC-P8000

Explosion of Vivid Colours With Efficiency and Excellence

SC-P7530/P9530



Widest Colour Gamut

Equipped with Epson's newly-developed UltraChrome PRO 12 inks, the SC-P7530 and SC-P9530 delivers a wide range of colours, reproducing every detail with unrivalled brilliance and accuracy. With the all-new 2.6-inch PrecisionCore MicroTFP printhead, these printers boast a productive workflow with dedicated channels for Matte and Photo Black inks.



Combining efficiency and quality, the SC-P7530 and SC-P9530 are fitted with PrecisionCore MicroTFP printhead, printing at 300dpi resolution with 12 channels. With smoother gradations and accurate texture reproduction, image quality is enhanced by Matte Black, Photo Black and Light Light Black inks, which are achieved through black enhancement overcoating technology.

Wide Range of Applications

Designed to print with a wide range of applications, professional photographers, fine art reproduction, packaging and contract proofers can now easily print with convenience. Even those that demand the highest print quality can unleash their creative freedom and print on a wide variety of media, including fine art papers, canvases and photo papers, without compromising on quality. The SC-P7530 and SC-P9530 photo printers support printing of up to 44" width media.

*Applicable to SC-P9530 only.



Designed to Last

Epson's SC-P7530 and SC-P9530 photo printers come with additional features such as a sealed roll media door for a dust-proof design and an integrated LED light to view projects while printing.

Catering to creatives that demand the most outstanding standards in printing, the SC-P7530 and SC-P9530 deliver perfect colour reproduction by leveraging on Epson's new UltraChrome PRO 12 pigment inks and PrecisionCore MicroTFP printhead technology. Ideal for Photo, Fine Art, Graphic Design and Proofing applications, be amazed by the explosion of vibrancy and precision in every print.

ULTRACHROME
PRO 12_{INK}

Media Width
24"
SC-P7530

Media Width
44"
SC-P9530

Deliver Top Notch Gallery-quality Prints

SC-P6530E/P6530D

Accurate Colour Reproduction

Delivering superb image quality with true-to-life colour accuracy, Epson's UltraChrome PRO 6 inks bring prints to a whole new level of professionalism.

Print That Last

Epson's UltraChrome PRO 6 inks are water-, smudge- and fade-resistant, allowing prints to be durable and long-lasting.



Water and smudge resistant

Fade resistant

Epson Smart Panel

With the Epson Smart Panel app, users can set up, monitor, print and scan through an iOS or Android device.

Conveniently set up, monitor, print, and scan on your Epson printers and easily commence print jobs from your fingertips. With a wide variety of configuration features, you can also customise the app according to your requirements into an all-in-one management app.



Seamless Operation For SC-P6530D only

Operating with top-tier reliability, the Epson SureColor SC-P6530D saves time and manpower with the Automatic Roll switching, simplifying the loading of new media rolls. Minimising downtime, the seamless operation ensures continuous printing and smooth operation.



Automatic Roll-Media Feed

Automatic Roll Switch

Production Stacker

Epson's SureColor SC-P6530E and SC-P6530D employ an unprecedented level of innovative technology. Coupling PrecisionCore™ technology with UltraChrome PRO 6 Inks, high accuracy and resolution can be achieved allowing the finest details to stand out.

ULTRACHROME
PRO 6 INK

Media Width
24"

Transform Ideas Into Vibrant True-To-Life Prints

SC-P8530D/DL/DM



Gallery Standards

6-colour ink set delivers exceptionally wide colour gamut and high black density, producing photographic prints that are of gallery standards.



Photographic prints



Black-and-White prints

Wide Variety of Media

Professional printing can be done on a variety of media, such as artist canvas or premium photo papers.



Matte media



Gloss media

Up to 44" Wide Dual Roll Design

Management of prints is much easier with the dual roll 44" wide-format media configuration that maximises productivity and increases efficiency.



Smoother Gradation for Professional Perfection

Utilising the innovative two-level black ink technology that simultaneously employs Photo Black and Matte Black, Epson's UltraChrome PRO 6 inks produce rich true-to-life black density and grey balance to ensure top-notch quality in every print. Generating smooth gradients, transitions, and neutral grayscale in every photo.



Delivering stunning picturesque prints in striking colours, Epson's SC-P8530D/P8530DL/P8530DM transform your ideas into vivid larger-than-life pieces of art with detailed precision. With high installation flexibility and seamless work process, businesses can now increase their productivity effortlessly with Epson's large format photographic printer.

ULTRACHROME
PRO 6 INK

Media Width
44"

Unparalleled Vividness and Productivity



Epson's SC-P20070 photo printer leads the industry with its high performance, reliable and swift printing. Equipped with the revolutionary PrecisionCore MicroTFP printhead and UltraChrome™ PRO ink, experience magnificence in every print at affordable running costs.

SC-P20070

State-of-the-Art Standards

No more worrying about high-volume quality print at fast speeds. Thanks to Epson's UltraChrome PRO archival ink technology and the innovative PrecisionCore MicroTFP, expect remarkably vivid and sharp prints that are gallery standards and last up to 200 years. With four levels of grey, your prints will feature accurate transitions with very low grain even at the fastest print modes.



Cost-Effective Production

Operating with reduced power consumption, businesses stand to gain with the reliable SC-P20070 printer as it requires minimum maintenance. Coming with large, cost-effective ink cartridges of up to 700ml, operators can also take advantage of the various configurations, such as an optional Postscript, Auto Take-Up system, and user selectable warranty and support packages.

Efficiency Secured

Built to minimise downtime during printing, the SC-P20070 comes with a new media feeding system that can keep up with high-volume prints without compromising on quality. Achieve maximum output with the Realtime Media Adjustment and Feedback System, and Media Inductive Roller System, allowing the printer to operate smoothly even when unattended.



Media feed rollers

Media inductive rollers

Range of Media



The SC-P20070 is a floor-standing printer with a 64" (1,626mm) wide carriage and improved flexible media handling, supporting basic bond paper, photo paper, transparent film, translucent back-lit and specialist synthetic media. It also accepts roll media via a spindle mounting with integrated tension adjustment and has a high-speed auto-cutter.

ULTRACHROME
PRO INK

Media Width
64"

SPECIFICATIONS

MODEL NUMBER	SC-P5330
SKU Number	C11CL14403
Printing Technology	On-Demand Inkjet (Piezo Electric), Variable-Sized Droplet Technology
Printing Method	Micro Piezo Printhead
Print Head	1,800 Nozzles (180 Nozzles x 10 Channels x 1 Head)
Nozzle Configuration	180 Nozzles (x2)
Black Colour	180 Nozzles (x8)
Maximum Resolution	5,760 x 1,440 dpi
Minimum Ink Droplet Volume	1.5pl
Printing Specifications	
Print Speed ¹	Speed Mode: 720 x 720dpi, 2.35 minutes Quality Mode: 1,440 x 720dpi, 4.25 minutes High Quality Mode: 1,440 x 1,440dpi, 6.35 minutes Max. Quality Mode: 5,760 x 1,440dpi, 13.00 minutes
Line Accuracy	±0.2% of the specified vector length or ±0.26mm (whichever greater)
Ink System	
Ink Type	Pigment Ink
Ink Brand Name	UltraChrome PRO10 Ink
Colour	Photo Black, Cyan, Vivid Magenta, Yellow, Matte Black, Grey, Light Grey, Light Cyan, Vivid Light Magenta, Violet
Ink Capacity	80ml (Bundled) / 200ml
Ink Case	Ink Cartridge
Paper Handling	
Paper Path	Roll, Cut Sheet (manual feed), Poster Board (manual feed), ASF Cassette
Paper Feed Method	Friction Feed (Auto switching between cut sheet and roll paper)
Maximum Roll Diameter ²	2 inch-core: Max ϕ 103 mm / 3 inch-core: Max ϕ 150 mm
Paper Size	20x25cm (8"x10"), A4, Letter, 254x305mm (10"x12"), JIS B4 (257x364mm), US B (11x17"), 11x14", A3, A3+, SuperW A3, B3, A2, US C (17"x22")
Paper Thickness	Roll: Roll Paper: 0.08 – 0.50mm Manual: Cut Sheet: 0.08 – 08mm, Poster Board: 09 – 1.5mm ASF: Cut Sheet: 0.08 – 0.8mm
Maximum Printable Length ³	Roll Paper: 18m, Cut Sheet: 610mm, Poster Board: 610mm
Borderless	8/10/11/14/16/17", A4/A3/A3+/A2, 300 mm: Roll Paper 10/14/16/17", A4/A3/A3+, 300 mm: Cut Paper & Poster Board
ASF Capacity: Max. Sheets	ASF Cassette: Plain paper 250 sheets (A4-A2/US-C)
Control Panel	
LCD Screen	4.3" Colour LCD & Electrostatic Touch Screen
Connectivity	
Interface	SuperSpeed USB ⁴ , 10BASE-T/100BASE-TX/IEEE802.11b/g/n/ac
Printer Language	ESC/P raster
Memory	1GB
Operating System	
PC Supported OS	Windows 7, 8, 8.1, 10, 11 or later Windows Server 2022, 2019, 2016, 2012R2, 2012, 2008R2, 2008
PC System Requirement	CPU: Core 2 Duo 3.05GHz or more, Memory: Memory more than 4GB, HDD: Free Space more than 64GB ⁴
Mac Supported OS	Mac OS X10.9.5 or later
Mac System Requirement	CPU: Core 2 Duo 3.05GHz or more, Memory: Memory more than 8GB, HDD: Free Space more than 128GB ⁵
Utility Software	
Bundled in CD	Windows - Printer Driver - EpsonNet Print - EpsonNet Setup - EpsonNet Config SE - Epson Manual Launcher - Epson Print Layout - Epson Edge Dashboard - Epson Media Installer - Epson ColorBase3 - Epson Device Admin - Device Status System (DSS) - EPSON SureLab Order Controller Mac - Printer Driver - Firmware Update - EpsonNet Config SE - Epson Manual Launcher - Epson Print Layout
Web Delivery	Windows - Installer Package (Install Navi) - Web Installer - Software Updater - Firmware Updater - Adobe ICC Profile - LFP Accounting Tool Mac - Installer Package - Web Installer - Software Updater - Firmware Updater - Uninstaller
Electrical Specifications	
Voltage	AC 100 – 240V, 50/60Hz
Rated Current	AC 100V 3.4AAC 100-240V 3.4-1.6A
Power Consumption	Operating: Approx. 42W, Ready: Approx. 17W, Sleep: Approx. 2.4W, Standby: Approx. 0.2W
Environmental Conditions	
Temperature	Operating: 10°C to 35°C / Storage: -20°C to 40°C
Humidity	Operating: 20% to 80% (no condensation), Storage: 5% to 85% (no condensation)
Dimensions & Weight	
Dimension (W x D x H)	863 x 1,134 x 405 mm
Weight	Approx. 53 kg

¹ Based on printing on A2 size Premium Glossy Photo Paper from starting pass to cut.

² Depending on the thickness of the paper, it is larger than the available outer diameter size. If roll paper is used, please confirm that it is within the outside diameter range.

³ Printable length is limited depending on restrictions of OSs or applications.

⁴ Compatible with the USB 3.0 specification.

⁵ For utility software, please refer to system requirements for each utility software.

Find out more at www.epson.com.sg/gobig-photo



Epson Singapore Pte Ltd 438B Alexandra Road, Block B Alexandra Technopark, #04-01/04, Singapore 119968. Tel: (65) 6586-5500
Epson Customer Care Center 100G Pasir Panjang Road, #01-09 Interlocal Centre, Singapore 118523. Epson Helpdesk: 800 120 5564. Please refer to www.epson.com.sg/contact for opening hours.

SPECIFICATIONS

MODEL NUMBER	SC-P6000	SC-P8000
SKU Number	C11CE41403	C11CE42403
Printing Technology	PrecisionCore Inkjet Technology, Variable-Sized Droplet Technology	
Printing Method	PrecisionCore TFP Printhead	
Print Head	360 Nozzles	
Nozzle Configuration	360 Nozzles (x3)	360 Nozzles (x5)
Black Colour	360 Nozzles (x5)	
Maximum Resolution	2,880 x 1,440 dpi	
Minimum Ink Droplet Volume	3.5pl	
Printing Specifications		
Print Speed	Draft Mode (360 x 360 dpi): 0.8 minutes Normal Mode (360 x 720dpi): 1.5 minutes Fine Mode (720 x 720 dpi): 3.3 minutes Super Fine Mode (720 x 1440 dpi): 8.1 minutes Super Photo Mode (2,880 x 1,440 dpi): 13.4 minutes	
Ink System		
Ink Type	Pigment Ink	
Ink Brand Name	UltraChrome HD Ink	UltraChrome HD Ink
Colour	Photo Black, Cyan, Vivid Magenta, Yellow, Matte Black, Light Cyan, Vivid Light Magenta, Light Black, Light Light Black	Photo Black, Cyan, Vivid Magenta, Yellow, Matte Black, Light Cyan, Vivid Light Magenta, Light Black, Light Light Black ¹ / Violet ¹
Ink Capacity	150ml, 350ml, 700ml	
Ink Case	Ink Cartridge	
Paper Handling		
Paper Path	Roll, Cut Sheet	
Paper Feed Method	Friction Feed	
Maximum Roll Diameter	254 – 610 mm, 2 inch-core / 3inch-core 2 inch-core: Max 103 mm / 3 inch-core: Max 150 mm	254 – 1,118mm, 2 inch-core / 3 inch-core 2 inch-core: Max 103 mm / 3 inch-core: Max 150 mm
Paper Size (Width) & Thickness	254 mm (10") – 610 mm (24"): Roll Paper 254 mm (10") – 610 mm (24"): Cut Sheet 0.08 – 1.50 mm	254 mm (10") – 1,118 mm (44"): Roll Paper 210 mm (A4) – 1,118 mm (44"): Cut Sheet 0.08 – 1.50 mm
Borderless	254mm (10"), 300mm (11.8"), 329mm (13"), 406mm (16"), 432mm (17"), 515mm (20.3"), 594mm (23"), 610mm (24")	728mm(29"), 841mm (A0/33"), 914mm (36"), 1118mm (44") 728mm (29"), 841mm, (A0/33"), 914mm (36") 1,118mm (44")
Connectivity		
Interface	Hi-Speed USB, 10BASE-T/100BASE-T/1000BASE-T	
Printer Language	ESC/P raster	
Memory	1GB	
Operating System		
PC System Requirement	Windows XP/Vista 7, 8, 8.1 (32/64bit) or later.	
Mac System Requirement	Mac OS X10.6.8 or later	
Utility Software		
Bundled in CD	Windows - Printer driver - EpsonNet Setup - EpsonNet Print - EpsonNet Config SE - EPSON manuals - Manual Launcher - LFP Print Plug-in for Office - PS Driver - PS Folder Windows - Epson Media Installer - EpsonNet SetupManager - Epson Device Admin - Epson Edge Dashboard - Epson Print Layout - Epson Print Automate - Epson Edge Print (Option) - Epson Print Admin (Option) - Order Controller (Option) Mac - Printer driver - EpsonNet Config SE - EPSON manuals - Epson Media Installer - Epson Edge Dashboard - Epson Print Layout - PS DriveriOS/Android - Epson Smart Panel	
Web Delivery	Windows - Printer driver - EpsonNet Setup - EpsonNet Print - EpsonNet Config SE - EPSON manuals - Manual Launcher - LFP Print Plug-in for Office - PS Driver - PS Folder Windows - Epson Media Installer - EpsonNet SetupManager - Epson Device Admin - Epson Edge Dashboard - Epson Print Layout - Epson Print Automate - Epson Edge Print (Option) - Epson Print Admin (Option) - Order Controller (Option) Mac - Printer driver - EpsonNet Config SE - EPSON manuals - Epson Media Installer - Epson Edge Dashboard - Epson Print Layout - PS DriveriOS/Android - Epson Smart Panel	
Electrical Specifications		
Voltage	AC 100 – 240V, 50/60Hz	
Rated Current	AC 100V 3.4AAC 100-240V 3.4-1.6A	
Power Consumption	Operating: Approx. 65W, Ready: Approx. 19W, Sleep: Approx. 2.0W, Standby: Approx. 0.5W	Operating: Approx. 75W, Ready: Approx. 19W, Sleep: Approx. 2.0W, Standby: Approx. 0.5W
Environmental Conditions		
Temperature	Operating: 10°C to 35°C / Storage: -20°C to 40°C	
Humidity	Operating: 20% to 80% (no condensation), Storage: 5% to 85% (no condensation)	
Dimensions & Weight		
Dimension (W x D x H)	1,356 x 667 x 1,218 mm	1,864 x 667 x 1,218 mm
Weight	Approx. 101 kg	Approx. 135 kg

¹ Users need to choose to configure the machine with either light light black or violet. Once this choice has been made, it is final and cannot be undone or switched at a later time. 99% Pantone coverage requires configuration with violet ink. Configured with light light black provides 98% Pantone coverage.

Information correct at time of printing.
Printed June 2024

Find out more at www.epson.com.sg/gobig-photo



Epson Singapore Pte Ltd 438B Alexandra Road, Block B Alexandra Technopark, #04-01/04, Singapore 119968. Tel: (65) 6586-5500
Epson Customer Care Center 100G Pasir Panjang Road, #01-09 Interlocal Centre, Singapore 118523. Epson Helpdesk: 800 120 5564. Please refer to www.epson.com.sg/contact for opening hours.

Dimensions and Weight

SC-P5330
Weight: Approx. 53 kg



WHAT'S IN THE BOX

- Printer
- Initial ink cartridge (80ml)
- AC power cable
- Setup guide
- Maintenance box
- Borderless maintenance box
- Paper cassette cover
- Roll feed spindle
- Borderless printing spacer

OPTIONS

2/3" Dual Roll Feed Spindle C12C811251
Auto Cutter Spare Blade C12C815351

©2024 Epson Singapore Pte Ltd. All Rights Reserved. Reproduction in part or in whole, without the written permission from Epson, is strictly prohibited.

EPSON is a registered trademark of Seiko Epson Corporation.

All other product names and other company names used herein are for identification purposes only and are the trademarks or registered trademarks of their respective owners.

Epson disclaims any and all rights in those marks. Projected images shown herein are simulations. The actual product design and contents may vary. Specifications are subject to change without notice and may vary between countries. Please check with local Epson offices for more information.

Apple, iPad and iPhone are trademarks of Apple Inc., registered in the U.S. and other countries. App Store is a service mark of Apple Inc.

Android is a trademark of Google Inc.

Dealer's Stamp

Information correct at time of printing.
Printed June 2024

Dimensions and Weight

SC-P6000
Weight: Approx. 101 kg



SC-P8000
Weight: Approx. 135 kg



WHAT'S IN THE BOX

- Printer
- Initial ink cartridge (110ml)
- AC power cable
- Setup guide
- Software CD-ROM
- Maintenance box

OPTIONS

For SC-P6000:
Spectroproofer – Mounter 24" ILS30EP C12C890531
C12C932021

For SC-P8000:
Spectroproofer – Mounter 44" ILS30EP C12C890521
C12C932021

Automatic Take-up Reel C12C815321
Hard Disc Unit, 320GB C12C848031
Additional Roll Media C12C811241
Adapters
Optional Roll Paper Belt C12C890121
Auto Cutter Spare Blade C12C815331

*For SC-P8000 only.

©2024 Epson Singapore Pte Ltd. All Rights Reserved. Reproduction in part or in whole, without the written permission from Epson, is strictly prohibited.

EPSON is a registered trademark of Seiko Epson Corporation.

All other product names and other company names used herein are for identification purposes only and are the trademarks or registered trademarks of their respective owners.

Epson disclaims any and all rights in those marks. Projected images shown herein are simulations. The actual product design and contents may vary. Specifications are subject to change without notice and may vary between countries. Please check with local Epson offices for more information.

Apple, iPad and iPhone are trademarks of Apple Inc., registered in the U.S. and other countries. App Store is a service mark of Apple Inc.

Android is a trademark of Google Inc.

Dealer's Stamp

Information correct at time of printing.
Printed June 2024

SPECIFICATIONS

MODEL NUMBER	SC-P7530	SC-P9530
SKU Number	C11CH12402	C11CH13402
Printing Technology	PrecisionCore Inkjet Technology, Variable-Sized Droplet Technology	
Printing Method	PrecisionCore MicroTFP Printhead	
Print Head	9,600 Nozzles (800 nozzles x 12 channels x 1 head)	
Nozzle Configuration	2,400 x 1,200 dpi	
Maximum Resolution	3.5pl	
Minimum Ink Droplet Volume		
Printing Specifications		
Print Speed	97 sec (Level 1) 122 sec (Default) Premium Glossy Photo Paper 170gsm A1 Size/ISO Bike	219 sec (Level 1) 285 sec (Default) Premium Glossy Photo Paper 170gsm B0 Size/ISO Bike
Ink System	Pigment Ink	
Ink Type	UltraChrome PRO 12 Ink	
Ink Brand Name	Photo Black, Cyan, Vivid Magenta, Yellow, Matte Black, Light Cyan, Vivid Light Magenta, Orange, Green, Violet, Grey, Light Grey	
Colour		
Ink Capacity	350ml, 700ml	
Ink Case	Ink Cartridge	
Paper Handling	Roll Sheet (Manual)	
Paper Path	Friction Feed	
Paper Feed Method	2" Roll core-media: Max. 103 mm, 3" Roll core-media: Max. 150 mm	
Maximum Roll Diameter	6kg	10kg
Maximum Roll Weight	254 – 620 mm	254 – 1,118 mm
Paper Width (Roll)	210 – 620 mm	210 – 1,118 mm
Paper Width (Cut Sheet)	0.08 – 0.5 mm	
Paper Thickness (Roll)	Cut Sheet: 0.08 – 1.5 mm	
Paper Thickness (Manual)		
Connectivity		
Interface	Super-Speed USB ¹ , 100BASE-TX / 1000BASE-T	USB Interface (Hi-Speed USB/USB), 1000BASE-T/100BASE-TX
Printer Language	ESC/P raster	
Memory	2GB	
Operating System	Windows 10, 8.1, 8, 7, Windows Vista, Windows XP (32bit/64bit) Windows Server 2019/2016/2012 R2/2012/2008/2003 R2/2003 SP2 or later	
PC System Requirement	Mac OS X 10.6.8 or later, Mac OS 11 or later	
Mac System Requirement		
Utility Software	Windows Install Navi - Printer driver - EpsonNet Setup - EpsonNet Print - EpsonNet Config SE -Epson Software Updater - EPSON manuals - Manual Luncher - Epson Control DashboardMac Setup Navi EpsonNet Config SE Epson Software Updater	
Bundled in CD	Windows Install Navi, Web Installer, Firmware Updater, PS Driver, HDI Driver, XPS Driver, Epson Media Installer, EpsonNet Setup Manager, Epson Device Admin, Epson Edge Dashboard, Epson Edge Print, Epson Print Layout, LFP Accounting tool, Adobe ICC Profiles, Mac Web Installer, Install Navi - Printer driver - EpsonNet Config - Epson Software Updater - Uninstaller - Epson Manuals, Epson Media Installer, Firmware Updater, Linux, Printer driver	
Web Delivery		
Electrical Specifications	AC 100 – 240V, 50/60Hz	
Voltage	AC 100V 3.4AAC 100-240V 3.4-1.6A	
Rated Current	Operating: Approx. 85W Ready: Approx. 32W Sleep: Approx. 3.4W Standby: Approx. 0.3W	Operating: Approx. 110W Ready: Approx. 32W Sleep: Approx. 3.4W Standby: Approx. 0.3W
Power Consumption		
Environmental Conditions	Operating: 10°C to 35°C / Storage: -20°C to 40°C	
Temperature	Operating: 20% to 80% (no condensation), Storage: 5% to 85% (no condensation)	
Humidity		
Dimensions & Weight	Storage: 1,401 x 667 x 1,218 mm Printing: 1,401 x 2,211 x 1,218 mm	
Dimension (W x D x H)	Storage: 1,909 x 667 x 1,218 mm Printing: 1,909 x 2,211 x 1,218 mm	
Weight	Approx. 121.7 kg	Approx. 153.8 kg

¹ Might differ depends on applications/media.

Dimensions and Weight

SC-P7530
Weight: Approx. 121.7 kg



SC-P9530
Weight: Approx. 153.8 kg



WHAT'S IN THE BOX

- Printer
- Printer Stand
- Initial ink cartridge (110ml)
- AC power cable
- Setup guide
- Software CD-ROM
- Maintenance box

OPTIONS

Spectro Proofer (24") – Compatible with P7500	C12C890531
Spectro Proofer (44") – Compatible with P5500	C12C890521
ILS30EP	C12C932021
Auto Take Up Reel	C12C935931
Hard Disk Unit	C12C934551
Roll Media Adapter	C12C935931
Adobe® PostScript® 3™ Expansion Unit	C12C934571

©2024 Epson Singapore Pte Ltd. All Rights Reserved. Reproduction in part or in whole, without the written permission from Epson, is strictly prohibited.

EPSON is a registered trademark of Seiko Epson Corporation.

All other product names and other company names used herein are for identification purposes only and are the trademarks or registered trademarks of their respective owners.

Epson disclaims any and all rights in those marks. Projected images shown herein are simulations. The actual product design and contents may vary. Specifications are subject to change without notice and may vary between countries. Please check with local Epson offices for more information.

Apple, iPad and iPhone are trademarks of Apple Inc., registered in the U.S. and other countries. App Store is a service mark of Apple Inc.

Android is a trademark of Google Inc.

Dealer's Stamp

Information correct at time of printing.
Printed June 2024

SPECIFICATIONS

MODEL NUMBER	SC-P6530E	SC-P6530D
SKU Number	C11CJ48402	C11CJ49402
Printing Technology	PrecisionCore Inkjet Technology, Variable-Sized Droplet Technology	
Printing Method	PrecisionCore MicroTFP Printhead	
Print Head	9,600 Nozzles	
Nozzle Configuration	Pk:1,600, Mk:1,600 C:1,600, M:1,600, Y:1,600, Grey:1,600	
Maximum Resolution	2,400 x 1,200 dpi	
Minimum Ink Droplet Volume	3.5pl	
Printing Specifications		
Print Speed	A1 Size Premium Glossy Photo Paper 170gsm, 1200dpi x 1200dpi EPSON Standard (sRGB) / Quality: 111 sec Right: Min. 3mm ¹ / Left : Min. 0mm ¹ Top: Min. 3mm ¹ / Bottom: Min. 1mm ¹ 0.08 mm ² (0.02 mm ³)	
Margin	Roll Paper Cut Sheet	
Minimum Line Width	0.08 mm ² (0.02 mm ³)	
Ink System	Pigment Ink	
Ink Type	UltraChrome Pro 6 Ink	
Ink Brand Name	Photo Black, Cyan, Magenta, Yellow, Matte Black, Grey	
Colour		
Ink Capacity	350, 700 ml	
Ink Case	Ink Cartridge	
Paper Handling		
Paper Path	Roll (Single Roll), Cut Sheet (Manual Feed), Poster Board (Manual Feed)	Roll (Double Roll), Cut Sheet (Manual Feed), Poster Board (Manual Feed)
Paper Feed Method	Friction Feed	
Maximum Roll Diameter	Max. 170 mm ⁴	
Maximum Roll Weight	6.8kg	
Paper Width (Roll)	254 – 610 mm	
Paper Width (Cut Sheet)	203 – 610 mm	
Paper Thickness (Roll)	0.07 – 0.8 mm	
Paper Thickness (Manual)	Cut Sheet: 0.07 – 0.8 mm / Poster Board: 0.8 – 1.5 mm	
Maximum Printable Length	91 m ⁵	
Borderless Sizes	254mm (10"), 300mm (11.8"), 330mm (13"), 356mm (14"), 406mm (16"), 432mm (17"), 500mm (19"), 508mm (20"), 515mm (20.3"), 594mm (23"), 610mm (24")	
Roll Paper Remaining	The remaining amount is managed by the barcode printed on roll paper	
Connectivity		
Interface	SuperSpeed USB, 100BASE-TX/1000BASE-T/IEEE802.11b/g/n/ac, USB Memory Stick	
Printer Language	ESC/P raster	ESC/P raster, HP-GL/2*, HP RTL*, Adobe PostScript 3, Adobe PDF 1.7
USB Direct Print	Yes	
Memory	4GB	
HDD (Optional)	SSD 960GB	
Operating System	Windows 10, 8.1, 8, 7, Windows Vista, Windows XP (32bit/64bit) Windows Server 2019/2016/2012 R2/2012/2008/2003 R2/2003 SP2 or later	
PC System Requirement	Mac OS X 10.6.8 or later, Mac OS 11 or later	
Mac System Requirement		
Utility Software	Windows - Printer driver - EpsonNet Setup - EpsonNet Print - EpsonNet Config SE - EPSON manuals - Manual Launcher - LFP Print Plug-in for Office Epson Media Installer - EpsonNet SetupManager - Epson Device Admin - Epson Edge Dashboard - Epson Print Layout - Epson Print Automate - Order Controller Mac - Printer driver - EpsonNet Config SE - EPSON manuals - Epson Media Installer - Epson Edge Dashboard - Epson Print Layout/OS/Android - Epson Smart Panel	
Bundled in CD		
Web Delivery		
Electrical Specifications	AC 100 – 240V, 50/60Hz	
Voltage	AC 100V 3.4AAC 100-240V 3.4-1.6A	
Rated Current	Operating: Approx. 75W, Ready: Approx. 32W, Sleep: Approx. 2W, Standby: Approx. 0.3W	
Power Consumption		
Environmental Conditions	Operating: 10°C to 35°C / Storage: -20°C to 40°C	
Temperature	Operating: 20% to 80% (no condensation) Storage: 5% to 85% (no condensation)	
Humidity		
Dimensions & Weight	1,365 x 499 x 975 mm	
Dimension (W x D x H)	Approx. 115.2kg	Approx. 115.6kg
Weight		

¹ Might differ depends on applications/media.

² ISO/IEC 24790, Single weight matte paper, CAD/line drawing, speed, high speed=Off, finest detail=On.

³ Addressable.

⁴ Depending on the thickness of the paper. It is larger than the available outer diameter size. If roll paper is used, please confirm that it is within the outside diameter range.

⁵ Printable length is limited depending on restrictions of operating systems or applications.

Find out more at www.epson.com.sg/gobig-photo

[EpsonSingapore](#) [EpsonSingapore](#) [EpsonSoutheastAsia](#) [Epson Singapore](#) [EpsonSingapore](#)

Epson Singapore Pte Ltd 438B Alexandra Road, Block B Alexandra Technopark, #04-01/04, Singapore 119968. Tel: (65) 6586-5500
Epson Customer Care Center 100G Pasir Panjang Road, #01-09 Interlocal Centre, Singapore 118523. Epson Helpdesk: 800 120 5564. Please refer to www.epson.com.sg/contact for opening hours.

Epson Singapore Pte Ltd 438B Alexandra Road, Block B Alexandra Technopark, #04-01/04, Singapore 119968. Tel: (65) 6586-5500
Epson Customer Care Center 100G Pasir Panjang Road, #01-09 Interlocal Centre, Singapore 118523. Epson Helpdesk: 800 120 5564. Please refer to www.epson.com.sg/contact for opening hours.

Dimensions and Weight

SC-P6530E
Weight: Approx. 115.2kg



SC-P6530D
Weight: Approx. 115.6kg



WHAT'S IN THE BOX

- Printer
- Initial ink cartridge (110ml)
- AC power cable
- Setup guide
- Software CD-ROM
- Maintenance box

OPTIONS

Roll Feed Spindle (24")	C12C937711
Production Stacker (24")	C12C937731
SSD Unit	C12C936671

*It is recommended to do test before purchasing printer if HP-GL/2 or HP RTL direct print is used, because the support is dependent on application or data.

©2024 Epson Singapore Pte Ltd. All Rights Reserved. Reproduction in part or in whole, without the written permission from Epson, is strictly prohibited.

EPSON is a registered trademark of Seiko Epson Corporation.

All other product names and other company names used herein are for identification purposes only and are the trademarks or registered trademarks of their respective owners.

Epson disclaims any and all rights in those marks. Projected images shown herein are simulations. The actual product design and contents may vary. Specifications are subject to change without notice and may vary between countries. Please check with local Epson offices for more information.

Apple, iPad and iPhone are trademarks of Apple Inc., registered in the U.S. and other countries. App Store is a service mark of Apple Inc.

Android is a trademark of Google Inc.

Dealer's Stamp

Information correct at time of printing.
Printed June 2024

Find out more at www.epson.com.sg/gobig-photo

[EpsonSingapore](#) [EpsonSingapore](#) [EpsonSoutheastAsia](#) [Epson Singapore](#) [EpsonSingapore](#)

Epson Singapore Pte Ltd 438B Alexandra Road, Block B Alexandra Technopark, #04-01/04, Singapore 119968. Tel: (65) 6586-5500
Epson Customer Care Center 100G Pasir Panjang Road, #01-09 Interlocal Centre, Singapore 118523. Epson Helpdesk: 800 120 5564. Please refer to www.epson.com.sg/contact for opening hours.

SPECIFICATIONS

MODEL NUMBER	SC-P8530D	SC-P8530DM	SC-P8530DL
SKU Number	C11CJ50402	C11CJ51402	C11CJ75402
Printing Technology	PrecisionCore Inkjet Technology, Variable-Sized Droplet Technology		
Printing Method	PrecisionCore MicroTFP Printhead		
Print Head	9,600 Nozzles		
Nozzle Configuration	Black Pk:1,600, Mk:1,600 Colour C:1,600, M:1,600, Y:1,600, Grey:1,600		
Maximum Resolution	2,400 x 1,200 dpi		
Minimum Ink Droplet Volume	3.5pl		
Printing Specifications	B0 size Premium Glossy Photo Paper 170gsm: 152 sec (Speed), 281 sec (Quality), 614 sec (Max Quality) Plain Paper: 35 sec (Draft), 46 sec (Speed), 258 sec (High Quality) Poster – B0 size Epson Premium Glossy Photo Paper 170gsm 1200dpi x 1200dpi: Standard(sRGB)/Quality: 281 sec		
Print Speed	Right: Min. 3mm ¹ / Left : Min. 0mm ¹ Top: Min. 3mm ¹ / Bottom: Min. 1mm ¹		
Margin	Roll Paper	Cut Sheet	
Scanning Specifications	-		
Max. Scan Speed	-	10 ips	-
Max. Optical Resolution	-	600 dpi	-
Scanning Specifications	-		
Max. Scan Speed	10 ips		
Max. Optical Resolution	600 dpi		
Copying Specifications	-		
Scaling	-	25 – 755%	-
Max. Copy	-	99 copies	-
Ink System	Pigment Ink		
Ink Type	UltraChrome PRO 6 Ink		
Ink Brand Name	Photo Black, Cyan, Magenta, Yellow, Matte Black, Grey		
Colour	Photo Black, Cyan, Magenta, Yellow, Matte Black, Grey		
Ink Capacity	350, 700 ml		1,600 ml
Ink Case	Ink Cartridge		Ink Supply Unit (Bulk Ink Solution)
Paper Handling	Roll (Double Roll), Cut Sheet (Manual Feed), Poster Board (Manual Feed)		
Paper Path	Friction Feed		
Paper Feed Method	Friction Feed		
Maximum Roll Diameter	Max. 170 mm ²		
Maximum Roll Weight	12.5kg		
Paper Width (Roll)	254 – 1,118 mm		
Paper Width (Cut Sheet)	203 – 1,118 mm		
Paper Thickness (Roll)	0.07 – 0.8 mm		
Paper Thickness (Manual)	Cut Sheet: 0.07 – 0.8 mm / Poster Board: 0.8 – 1.5 mm		
Maximum Printable Length	91 m ³		
Borderless Sizes	254mm (10"), 300mm (11.8"), 330mm (13"), 356mm (14"), 406mm (16"), 432mm (17"), 500mm (19"), 508mm (20"), 515mm (20.3"), 594mm (23"), 610mm (24"), 700mm (27.5"), 728mm (28.6"), 841mm (33"), 914mm (36"), 1030mm (40.5"), 1188mm (44")		
Roll Paper Remaining	The remaining amount is managed by the barcode printed on roll paper		
Connectivity	SuperSpeed USB ¹ , 100BASE-TX / 1000BASE-T/IEEE802.11b/g/n/ac		
Interface	ESC/P raster, HP-GL/2*, HP RTL*, Adobe PostScript 3, Adobe PDF 1.7		
Printer Language	Yes		
USB Direct Print	4GB		
Memory	SSD 960GB		
Operating System	Windows 10, 8.1, 8, 7, Windows Vista, Windows XP (32bit/64bit)		
PC System Requirement	Windows Server 2019/2016/2012 R2/2012/2008/2003 R2/2003 SP2 or later		
Mac System Requirement	Mac OS X 10.6.8 or later, Mac OS 11 or later		
Utility Software	Windows - Printer driver - EpsonNet Setup - EpsonNet Print - EpsonNet Config SE - EPSON manuals - Manual Launcher - LFP Print Plug-in for Office - PS Driver - PS Folder		
Bundled in CD	Windows - Epson Media Installer - EpsonNet SetupManager - Epson Device Admin - Epson Edge Dashboard - Epson Print Layout - Epson Print Automate - Epson Edge Print (Option) - Epson Print Admin (Option) - Order Controller (Option) Mac - Printer driver - EpsonNet Config SE - EPSON manuals - Epson Media Installer - Epson Edge Dashboard - Epson Print Layout - PS Driver/iOS/Android - Epson Smart Panel		
Electrical Specifications	AC 100 – 240V, 50/60Hz		
Voltage	AC 100V 3.4AAC 100-240V 3.4-1.6A		
Rated Current	Operating: Approx. 75W Ready: Approx. 32W Sleep: Approx. 2.0W Standby: Approx. 0.3W		Operating: Approx. 75W Ready: Approx. 32W Sleep: Approx. 2.0W Standby: Approx. 0.3W
Power Consumption	Operating: Approx. 75W Ready: Approx. 32W Sleep: Approx. 2.0W Standby: Approx. 0.3W		
Environmental Conditions	Operating: 10°C to 35°C / Storage: -20°C to 40°C		
Temperature	Operating: 20% to 80% (no condensation), Storage: 5% to 85% (no condensation)		
Humidity	Operating: 20% to 80% (no condensation), Storage: 5% to 85% (no condensation)		
Dimensions & Weight	1,848 x 499 x 975 mm		
Dimension (W x D x H)	1,848 x 499 x 975 mm		Approx. 165kg
Weight	Approx. 165kg		

¹ Might differ depends on applications/media.

² Depending on the thickness of the paper. It is larger than the available outer diameter size. If roll paper is used, please confirm that it is within the outside diameter range.

³ Printable length is limited depending on restrictions of operating systems or applications.

Find out more at www.epson.com.sg/gobig-photo

 EpsonSingapore  EpsonSingapore  EpsonSoutheastAsia  Epson Singapore  EpsonSingapore

Epson Singapore Pte Ltd 438B Alexandra Road, Block B Alexandra Technopark, #04-01/04, Singapore 119968. Tel: (65) 6586-5500
Epson Customer Care Center 100G Pasir Panjang Road, #01-09 Interlocal Centre, Singapore 118523. Epson Helpdesk: 800 120 5564. Please refer to www.epson.com.sg/contact for opening hours.

SPECIFICATIONS

MODEL NUMBER	SC-P20070
SKU Number	C11CE20402
Printing Technology	PrecisionCore Inkjet Technology, Variable-Sized Droplet Technology
Printing Method	PrecisionCore MicroTFP Printhead
Print Head	4,000 Nozzles
Nozzle Configuration	PK, MK, DGY, GY, LGY: 800 Nozzles C, VM, Y, LC, VLM: 800 Nozzles
Maximum Resolution	2,400 x 1,200 dpi
Minimum Ink Droplet Volume	3.5pl
Printing Specifications	Draft Mode (600 x 600 dpi): 1.9 minutes Normal Mode (1,200 x 1,200 dpi): 3.0 minutes Fine Mode (2,400 x 1,200 dpi): 5.6 minutes
Print Speed	Draft Mode (600 x 600 dpi): 1.9 minutes Normal Mode (1,200 x 1,200 dpi): 3.0 minutes Fine Mode (2,400 x 1,200 dpi): 5.6 minutes
Ink System	Pigment Ink
Ink Type	UltraChrome PRO Ink
Ink Brand Name	Photo Black, Cyan, Vivid Magenta, Yellow, Matte Black, Dark Grey, Grey, Light Grey, Light Cyan, Vivid Light Magenta
Colour	Photo Black, Cyan, Vivid Magenta, Yellow, Matte Black, Dark Grey, Grey, Light Grey, Light Cyan, Vivid Light Magenta
Ink Capacity	700ml
Ink Case	Ink Cartridge
Paper Handling	Roll (Single Roll), Cut Sheet (Manual Feed)
Paper Path	Friction Feed
Paper Feed Method	Friction Feed
Paper Width (Roll)	254 (10") – 1,626 (64") mm
Paper Width (Cut Sheet)	210 (A4) – 1,118 (44") mm
Paper Thickness (Roll)	0.08 – 1.50 mm
Borderless Sizes	254mm (10"), 300mm (11.8"), 329mm (A3+/A3++), 406mm (16"), 432mm (17"/USC), 508mm (20"), 515mm (20.3"/B2), 594mm (A1), 610mm (24"/A0+), 728, (29"/B1), 841mm (A0), 914mm (36"/A0+), 1,030mm (B0), 1,118mm (44"/B0+), 1,270mm (50"), 1,372mm (54"), 1,524mm (60")
Roll Paper Remaining	The remaining amount is managed by the barcode printed on roll paper
Connectivity	Hi-Speed USB
Interface	ESC/P raster
Printer Language	Yes
USB Direct Print	1.5GB
Memory	Windows XP, Vista, 7, 8, 8.1 (32/64bit) or later
Operating System	Macintosh Mac OS X 10.6.8 or later
PC System Requirement	User's Guide (EN), Network Guide (EN), LFP RemotePanel 2, Epson Color Calibration Utility, EpsonNet Setup, EpsonNet Config g, EpsonNet Print (Windows only)
Mac System Requirement	LFP Accounting Tool (Job monitoring, consumable cost tracking), HDD Utility software (Web download)
Utility Software	LFP Accounting Tool (Job monitoring, consumable cost tracking), HDD Utility software (Web download)
Bundled in CD	LFP Accounting Tool (Job monitoring, consumable cost tracking), HDD Utility software (Web download)
Web Delivery	LFP Accounting Tool (Job monitoring, consumable cost tracking), HDD Utility software (Web download)
Electrical Specifications	AC 100 – 240V, 50/60Hz
Voltage	AC 100V 3.4AAC 100-240V 3.4-1.6A
Rated Current	Operating: Approx. 95W, Sleep: Approx. 2.8W ¹ , Standby: Approx. 0.5W
Power Consumption	Operating: 10°C to 35°C / Storage: -20°C to 40°C Operating: 20% to 80% (no condensation), Storage: 5% to 85% (no condensation)
Environmental Conditions	Operating: 10°C to 35°C / Storage: -20°C to 40°C Operating: 20% to 80% (no condensation), Storage: 5% to 85% (no condensation)
Temperature	Operating: 20% to 80% (no condensation), Storage: 5% to 85% (no condensation)
Humidity	2,415 x 760 x 1,145 mm
Dimensions & Weight	Approx. 171 kg
Dimension (W x D x H)	2,415 x 760 x 1,145 mm
Weight	Approx. 171 kg

¹ Interface is 1000BASE-T.

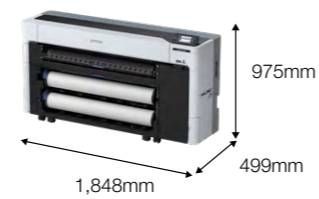
Find out more at www.epson.com.sg/gobig-photo

 EpsonSingapore  EpsonSingapore  EpsonSoutheastAsia  Epson Singapore  EpsonSingapore

Epson Singapore Pte Ltd 438B Alexandra Road, Block B Alexandra Technopark, #04-01/04, Singapore 119968. Tel: (65) 6586-5500
Epson Customer Care Center 100G Pasir Panjang Road, #01-09 Interlocal Centre, Singapore 118523. Epson Helpdesk: 800 120 5564. Please refer to www.epson.com.sg/contact for opening hours.

Dimensions and Weight

SC-P8530D / P8530DM
Weight: Approx. 155kg



SC-P8530DL
Weight: Approx. 165kg



WHAT'S IN THE BOX

- Printer
- Initial ink cartridge (240ml)
- AC power cable
- Setup guide
- Software CD-ROM
- Maintenance box

OPTIONS

Roll Feed Spindle (44")	C12C936171
Production Stacker (44")	C12C937131
SSD Unit	C12C936671

*It is recommended to do test before purchasing printer if HP-GL/2 or HP RTL direct print is used, because the support is dependent on application or data.

©2024 Epson Singapore Pte Ltd. All Rights Reserved. Reproduction in part or in whole, without the written permission from Epson, is strictly prohibited.

EPSON is a registered trademark of Seiko Epson Corporation.

All other product names and other company names used herein are for identification purposes only and are the trademarks or registered trademarks of their respective owners.

Epson disclaims any and all rights in those marks. Projected images shown herein are simulations. The actual product design and contents may vary. Specifications are subject to change without notice and may vary between countries. Please check with local Epson offices for more information.

Apple, iPad and iPhone are trademarks of Apple Inc., registered in the U.S. and other countries. App Store is a service mark of Apple Inc.

Android is a trademark of Google Inc.

Dealer's Stamp

Information correct at time of printing.
 Printed June 2024

Dimensions and Weight

SC-P20070
Weight: Approx. 171 kg



WHAT'S IN THE BOX

- Printer
- Initial ink cartridge (110ml)
- AC power cable
- Setup guide
- Software CD-ROM
- Maintenance box

OPTIONS

Auto Cutter Spare Blade	C13S210040
Cleaning Stick	C13S090013
Maintenance Box	C13T619300
Auto Take-up Reel Unit	C12C932201
Roll Adapter	C12C932231
Adobe® PostScript® 3™ Expansion Unit	C12C891131
Hard Disk Unit	C12C848031

©2024 Epson Singapore Pte Ltd. All Rights Reserved. Reproduction in part or in whole, without the written permission from Epson, is strictly prohibited.

EPSON is a registered trademark of Seiko Epson Corporation.

All other product names and other company names used herein are for identification purposes only and are the trademarks or registered trademarks of their respective owners.

Epson disclaims any and all rights in those marks. Projected images shown herein are simulations. The actual product design and contents may vary. Specifications are subject to change without notice and may vary between countries. Please check with local Epson offices for more information.

Apple, iPad and iPhone are trademarks of Apple Inc., registered in the U.S. and other countries. App Store is a service mark of Apple Inc.

Android is a trademark of Google Inc.

Dealer's Stamp

Information correct at time of printing.
 Printed June 2024