

SPECIFICATIONS
MONNA LISA EVO TRE

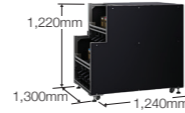
MODEL NUMBER	EVO TRE 16	EVO TRE 32
Print		
Printing Technology	PrecisionCore Inkjet Technology	
Number of Print Head	16	32
Number of Colour	8	
Maximum Print Resolution	1,200 x 1,200 dpi	
Gradation Process	Variable-Sized Droplet Technology	
Maximum Printing Width	1800mm	
Maximum Printing Length	Unlimited	
Ink		
Reactive	Black, Cyan, Magenta, Yellow, Grey, Red, Blue, Orange, Crimson, Brown, Navy Blue, Ink Penetration Liquid	
Disperse	Black, Cyan, Magenta, Yellow, Grey, Red, Blue, Orange	
Acid	Black, Cyan, Magenta, Yellow, Grey, Red, Blue, Cobalt, Orange, Rubine, Florescent Pink, Florescent Levine, Ink Penetration Liquid	
Pigment	Black, Cyan, Magenta, Yellow, Grey, Red, Green, Orange	
Ink Capacity	10 Litres	
Print Speed*1		
Draft 1	404m ² /h	692m ² /h
Draft 2	270m ² /h	472m ² /h
Production 1	221m ² /h	402m ² /h
Production 2	171m ² /h	312m ² /h
Production 3	135m ² /h	239m ² /h
High Quality 1	103m ² /h	187m ² /h
High Quality 2	79m ² /h	145m ² /h
High Quality 3	63m ² /h	114m ² /h
Fabric Handling		
Fabric Drive	Endless Conveyer Belt With Adhesive	
Belt Washing	Automatic	
Standard Feeder		
Fabric Roll Diameter	300mm	
Fabric Roll Weight	100kg	
Environmental Characteristics		
Temperature	Operating: 20°C - 30°C, Recommended: 22°C - 28°C	
Humidity	Operating: 35 - 80%RH (no condensation)	
Dimensions		
Printing Machine	Approx. 4,660 (W) x 2,390 (D) x 1,940 (H) mm Approx. 4,610 (W) x 2,040 (D) x 2,070 (H) mm	
Control Box	Approx. 620 (W) x 1,220 (D) x 2,070 (H) mm Approx. 700 (W) x 1,800 (D) x 2,350 (H) mm	
Ink Rack	Approx. 1,240 (W) x 1,300 (D) x 1,220 (H) mm Approx. 1,240 (W) x 1,300 (D) x 1,220 (H) mm	
Weight		
Printing Machine	Approx. 3,700kg	
Control Box	Approx. 570kg	
Ink Rack	Approx. 380kg	
Electrical		
Printing Machine	AC 3 phase 400V 50A (50/60Hz)	

*1 Printing speeds vary depending on such factors as image printed, firmware version, operating state of PC and print settings. Printing resolution and printing speed must be selected according to each specific design.

EPSON
EXCEED YOUR VISION

Dimensions & Weight

Weight: Approx. 4,650kg



© 2019 Epson Singapore Pte Ltd. All Rights Reserved. Reproduction in part or in whole, without the written permission from Epson, is strictly prohibited. EPSON and EXCEED YOUR VISION are registered trademarks of Seiko Epson Corporation. All other product names and other company names used herein are for identification purposes only and are the trademarks or registered trademarks of their respective owners. Epson disclaims any and all rights in those marks. Print samples shown are simulations only. Specifications and product availability are subject to change without notice and may vary between countries. Please check with local Epson offices for more information.

Dealer's Stamp

Information correct at time of printing
Printed August 2019

EXCEPTIONAL QUALITY IN EVERY FABRIC PRINT.

Monna Lisa
Evo Tre 16 / 32



Be At The Forefront With Impeccable Digital Textile Printing.

Monna Lisa Evo Tre is equipped with Epson PrecisionCore Technology and the breakthrough Genesta PG-Revo pigment inks to enable increased productivity and exceptional quality to meet the demanding and evolving needs of the textile market. Working together with textile industry leaders, Epson Digital Textile Total Solution enables the best printing results and utmost customer satisfaction to take you to the forefront. With the Epson PrecisionCore Printheads, combine quality, accuracy and speed to produce brilliant images. Exceptional Quality, Excellent Results. It's In The Details.

IT'S IN THE DETAILS.

EPSON
EXCEED YOUR VISION

Sales Enquiries
800 120 5564

[f](#) EpsonSEA
 [i](#) EpsonSEA
 [t](#) @EpsonSEA
 [y](#) EpsonSoutheastAsia
 [in](#) Epson Southeast Asia
 For latest specifications, visit www.epson.com.sg/textile-printing or call **800 120 5564**.

Epson Singapore Pte Ltd 1 Harbourfront Place, #03-02 HarbourFront Tower One, Singapore 098633. Tel: (65) 6586-5500 Fax: (65) 6271-9755
 Epson Customer Care Centre 108 Pasir Panjang Road, #04-08 Golden Agri Plaza, Singapore 118535. Epson Helpdesk: 800 120 5564. Operating hours: Monday - Friday, 9am - 6pm, Saturday, 9am - 1pm. Closed on Sunday and Public Holiday.

Take textile printing to the next level with Epson textile printers. Be at the forefront of fashion as an industry leader with vivid, high quality printed textiles that stands out from the others.



Robust And Reliable For Reduced Downtime And Increased Productivity

Genuine Epson GENESTA Inks

8-colour GENESTA inks, optimised for the Monna Lisa Evo Tre and its PrecisionCore printheads, are offered in acid, reactive, disperse, and pigment ink formulations.

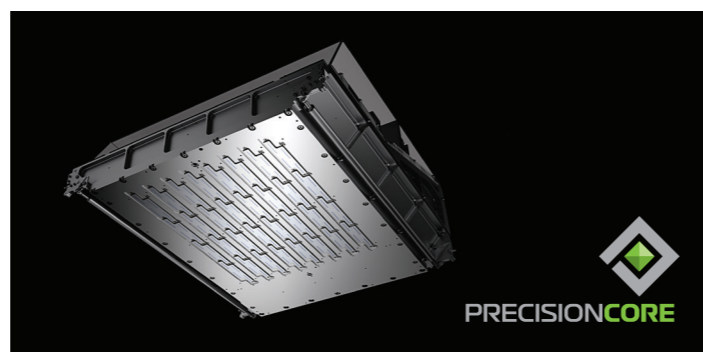


Proven Mechanisms

Monna Lisa Evo Tre is an evolved new version of one of the most respected textile printers in the industry.

PrecisionCore MicroTFP Printhead

User-replaceable, high density printheads offer a winning combination of speed, durability, and quality.



Symmetrical Colour Alignment For Maximum Print Quality And Productivity

Symmetrical colour alignment ensures consistent colour overlap order is maintained during bidirectional printing. As a result, colour and pattern reproduction are exceptionally uniform, and even areas of solid colour and fine geometric patterning can be beautifully rendered while maintaining high throughput.

Improved Tonal Shading And Edge Definition

Superior printhead positioning accuracy and ink droplet control ensure excellent thin line reproduction and edge sharpness, with improved grain on lighter colours. And whatever the fabric or design, GENESTA inks can accurately render everything from delicate hues to bold, bright colours.



Reactive ink on cotton



Acid ink on silk



Disperse ink on polyester



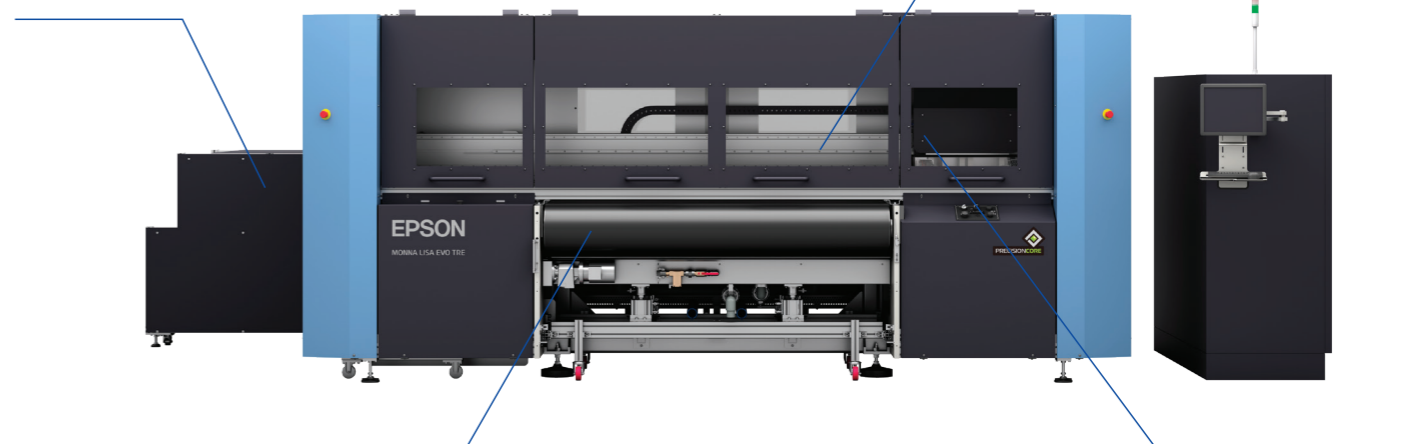
Pigment ink on cotton

Ink Management

A dedicated management system reduces downtime by enabling hot swapping of 10L bag in box GENESTA degassed inks.

Double Head-strike Sensors

Optical and mechanical sensors detect folds or wrinkles in the fabric and immediately stop the carriage to prevent head strike.



Precision Drive Belt

A robust, high precision drive belt mechanism ensures stable, wrinkle free fabric transport.

A Choice Of Head Configurations

32 head and 16 head models are offered to suit your production needs.

Full Service Solutions For Digital Textile Printing

At our Textile Solution Center in Como, Italy, and at a new center slated to open in Japan in 2020, we offer a full range of consulting and support services. From equipment demos and sample production, to advice on pre and post-processing techniques, we provide full service support for every stage of the fabric printing process.



Textile Solution Center in Como, Italy



Proposed Textile Solution Center in Hirooka, Japan

Complies With Global Standards For Sustainability

Epson GENESTA inks meet globally recognised standards for environmentally friendly textile printing. We are a bluesign® system partner, and have received ECO PASSPORT by OEKO-TEX® certification.

