



## THE PERFECT PORTABLE PARTNER FOR HEAVY-DUTY LABELLING SOLUTIONS.

The Epson LabelWorks™ LW-Z700FK label printer is engineered for greater economy while fusing form and function. Speedily accomplish tedious labelling task with swift print speeds while not compromising on print resolution. The label printer adapts well to a high-volume environment to perform continuous printing. Cost-saving is made greater with the rewind and pull-and-print capabilities that ensure maximum economy when it comes to label cost. Epson tops it all with an ergonomic design and intuitive short-cut keys to deliver an experience that spells efficiency and productivity.



Autocutter

Weather Resistant

Abrasion Resistant

Temperature Resistant

Water Resistant

Chemical Resistant

### Remarkable Productivity

Brilliant print speeds of up to 30mm/sec at superb print resolution ensures a quick turnaround time with no compromise on quality.

### Minimal Operating Cost

Minimise label tape wastage with shorter print margin of minimum 1mm\* and label print preview.

### Engineered for Ease

Ergonomically designed, you can be assured of an efficient work process with little inconveniences.

\*Applicable for selected tapes.

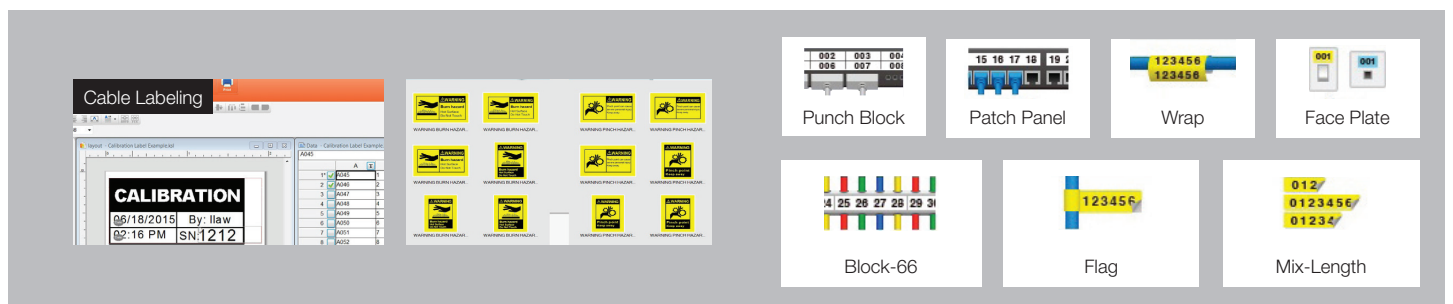
Coupled with the diverse range of label tapes that Epson offers, the Epson LabelWorks™ LW-Z700FK is able to meet rigorous industrial standards and satisfying a wide array of needs by adapting to their application-specific requirements.



### Engineered for Ease

#### Ultimate Versatility with Epson Label Editor

The LW-Z700FK comes bundled with the Epson Label Editor software for a more customisable experience. The software comes with more than 70 pre-installed templates to create custom labels and also allows for more customisation of labels with its functionality to import images and barcodes.



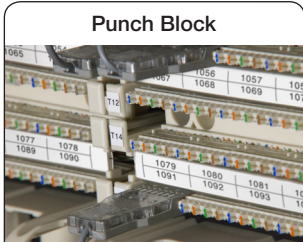
## Engineered for Ease

### Intuitive Ergonomic Design

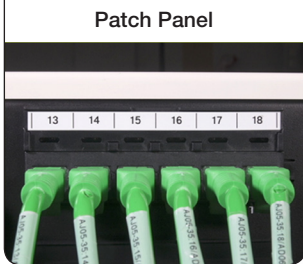
Configure your printouts quicker, with more efficiency through conveniently located short-cut keys. Experience convenience through the ease of tape cartridge replacement from a front opening and the magnetic mounting capability.



**Magnet Attachment Feature**  
Allow hands-free printing in the field.

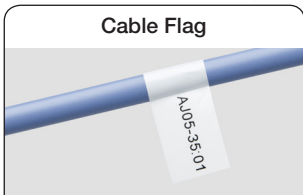


**Punch Block**

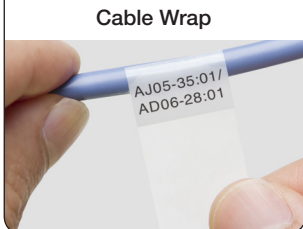


**Patch Panel**

**Punch Block & Patch Panel**  
Simple one-step process of creating organised punch block strips or labels.



**Cable Flag**

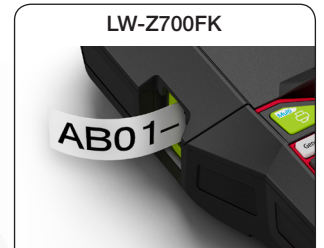


**Cable Wrap**

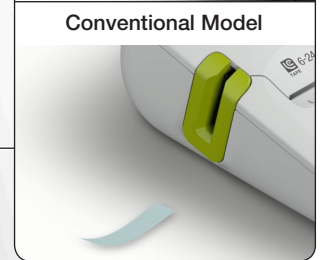
**Flag & Wrap**  
Creates cable flags and self-laminating overwraps for easy identification of labels.



**Impact Resistance Design**  
Conforms to MIL-STD-810F, which is a drop test from a height of 122cm.



**LW-Z700FK**

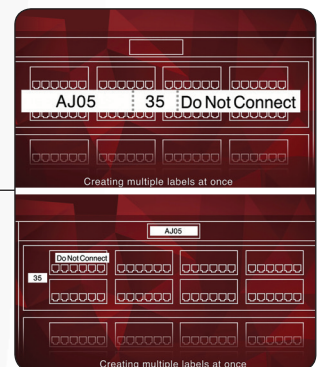


**Conventional Model**

**Drop-Stop**  
Holds labels in place after printing and cutting to prevent dropping.



**Pick-and-Print Function**  
Automatically pauses a job after printing and cutting each label in a series and resumes when each completed label has been removed.



**Mix-Length Printing**  
Create variable length labels in a single print.



**Rewind Function**  
Rewinds and retracts excess tape to provide a print margin as low as 1mm.

<b>Model Number</b>	<b>LW-Z700FK</b>	
<b>Printing</b>		
Technology	Thermal Transfer	
Tape Width	6 - 24 mm	
Resolution	180 dpi	
Printable Dot Numbers	128 dot numbers	
Max Print Height	18.1 mm	
Max Print Speed	Up to 30 mm / sec (With AC Adapter or Li-ion battery)	
<b>Print Settings</b>		
Repeat Printing	Yes	
Auto Increment	Yes, up to 99 copies	
Data Import	Yes	
Number Serialization	Up to 4 digits or alphabets	
Mirror Printing	Yes	
Vertical Printing	Yes	
Multi Line Print	Standalone mode: Up to 8 lines (with 24 mm tape)	
Print Margins	Minimum 1 mm print margin for standard labels* for both standalone or the use of Label Editor.	
Fixed Length	(10 mm - 999 mm)	
Cable Wrap	Yes	
Flag	Yes	
QR Code	Yes	
Barcodes	via Handheld: 9 types EAN 8, EAN 13, Code 39, Code 128, UPC-A, UPC-E, ITF, CodaBar, QR Code via Label Editor: 14 types EAN 8, EAN 13, Code 39, Code 128, UPC-A, UPC-E, ITF, CodaBar, QR Code, NW-7 (CodaBar), EAN-128 (GS1-128), GS1 DataBar, MaxiCode, PDF417, DataMatrix	
Symbols	892 industrial and professional symbols	
<b>Hardware</b>		
Cutter	Automatic with half-cut function	
Detection	Cover Open, Battery Level, Tape Detection (Type and size)	
Drop-Stop & Print-and-Pick	Prints, cuts and hold tape until it is pulled from printer before printing the next label in the batch automatically	
LCD	140 x 80 dot back-lit monochrome LCD	
Internal Memory	Up to 100 files	
<b>Connectivity</b>		
Interface	USB 1.1 Full-Speed	
Software to be Downloaded	Epson Label Editor: Vista, 7, 8, 8.1, 10	
<b>Other Information</b>		
AC Adapter	Yes	
Battery	6AA (Not Included)	
<b>Consumables</b>		
Li-ion Battery	<b>Spec</b> 1,950 mAh	<b>Order Code</b> C52CE97010

**Dimensions & Weight**

**LW-Z700FK**  
**Weight: 1.11 kg / 2.21 lb**



**Supplied Accessories**

- Power Adapter
- USB Cable
- Installation Guide
- 1 x 12 mm Black on White tape (4 m)
- 1 x Li-ion Battery (1,950 mAh)
- 2 x Magnetic Attachment
- Carrying Case

© 2018 Epson Singapore Pte Ltd. All Rights Reserved. Reproduction in part or in whole, without the written permission from Epson, is strictly prohibited. EPSON and EXCEED YOUR VISION are registered trademarks of Seiko Epson Corporation. All other products names and other company names used herein are for identification purposes only and are the trademarks or registered trademarks of their respective owners. Epson disclaims any and all rights in those marks. Print samples shown are simulations only. Specifications and product availability are subject to change without notice and may vary between countries. Please check with local Epson offices for more information.

Android is a trademark of Google Inc.

Information correct as at January 2018

\* If print margin of label is set to 1 mm,  
 - For standard tapes, a 4 mm lead waste will be ejected when Half-cut function is switched on and a 19 mm lead waste will be ejected when Half-cut function is switched off.  
 - For specialty tapes, a 19 mm lead waste will be ejected because Half-cut function is not available for such tapes.