

EPSON



PRECISIONCORE
HEAT•FREE

SWITCH TO HEAT-FREE ECOTANK PRINTERS

Make the sustainable choice with fast, eco-efficient Epson EcoTank printers

Looking for a cost-effective and simple way to minimise your eco impact? Epson's wide range of EcoTank colour printers offers the best of both worlds. Our Heat-Free Technology reduces power consumption in printing, saving significant energy compared to laser printers. What's more is that our refillable ultra-high yield supplies reduce waste products and their environmental impact. All while delivering the highest print quality and cost savings that keep growing over time.



Leading a revolution in printing technology

Epson EcoTank printers revolutionised the printing experience when they were first introduced in 2010. The new ultra-high-capacity ink tank system completely removed the need for cartridges, significantly reducing the waste from print supplies.

Powered by Epson Heat-Free Technology, the EcoTank printer range now includes 24 models¹, ranging from A4 to A3 size, single to multifunction, 4 colour to 6 colour inks and monochrome models, as well as 4-colour dye ink to 4-pigment ink models.

As the brand with the widest range of ink tank printers, Epson continues to lead as the number 1 ink tank vendor worldwide, for 11 years running since 2010², with over 60 million units sold globally.



How Heat-Free Technology works

Epson Heat-Free Technology does not require heat in the ink ejection process. Instead pressure is applied to the Piezo element, which flexes backwards and forwards firing the ink from the printhead. This means printer parts last longer and energy consumption is reduced, saving energy, time and money in the process.

Laser printer

Typically this is a complex process and requires preheating the fuser, and heat again to fuse the toner to the paper.



EcoTank

Only 3 stages are needed to achieve a printout.



Efficient and eco-conscious without compromise

EcoTank printers make the sustainable choice a simple one. They bring together eco-conscious technology with efficient features to help you be more sustainable and productive.

Be Cool and enjoy the benefits

Did you know that Epson EcoTank printers are powered by Epson's Heat-Free Technology, which helps contribute to lower annual energy bills, especially for companies operating high volume of printers. They are also more environmentally friendly. As a result, they produce up to 85% less carbon dioxide¹ and consume up to 85% less power than laser printers².



Save time with consistent high-speed printing

With no need for the printer to warm up, prints can start immediately. Then, once you've started, you get consistently fast printing, even for high print-density jobs.



Save energy and reduce your bills

With no fuser unit to heat, EcoTank printers consume less power than laser printers, keeping your energy bills under control.



Fewer replacement parts, lower environmental impact

Reducing waste is a critical part of being more sustainable. Thanks to our Heat-Free Technology and printhead design, our inkjet printers require significantly fewer replacement parts than laser printers, helping to reduce your environmental impact.



No compromise on productivity

Fewer replacement parts also means improved reliability, less intervention and minimal downtime, meaning your business can keep moving with confidence.



¹ The L1210, L1250, L3210, L3250, L4260 and L5290 have white variation models named the L1216, L1256, L3216, L3256, L4266 and L5296 which are exclusively available online.
² No. 1 Ink Tank Printer Vendor Worldwide for 11 years running (2010-2020), based on IDC WW Quarterly Hardcopy Peripherals Tracker, Q2 2021.

¹ Annual CO₂ output calculations were based on JEMAI-LCA Pro. Cedar tree CO₂ absorption calculations were based on Japan Forestry Agency standards of 8.8kg CO₂ per annum per tree.
² Statistics above are based on results from internal testing conducted by Epson, using Epson L6550 ISO Color 12ipm vs Laser model ISO Color 22ppm test for power consumed to print 20 pages. Testing single page A4 document of ISO Office Final PDF (ISO/IEC 24734). Each test was conducted twice by Epson to ensure consistency of results. Both printers have been tested under same conditions.

Ecological and Economical

Affordable ink bottles with ultra-high page yield keep print costs low and your total cost of ownership down.

Print up to 7,500 pages for black¹, and 6,000 pages for colour¹ without refilling.



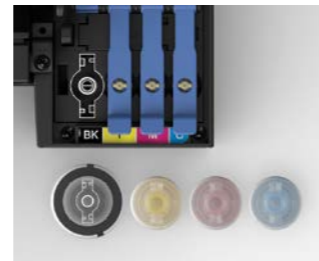
Designed with ease in mind

With a see-through window on the front of each printer, it's easy to check the remaining ink level.

And when it comes to topping up, the integrated ink tank enables spill-free, error-free refilling with individual bottles that have designated nozzles.



Front facing ink tank for mess-free ink refilling.



Unique spout and inlet design for error-free ink refilling.



No spills.



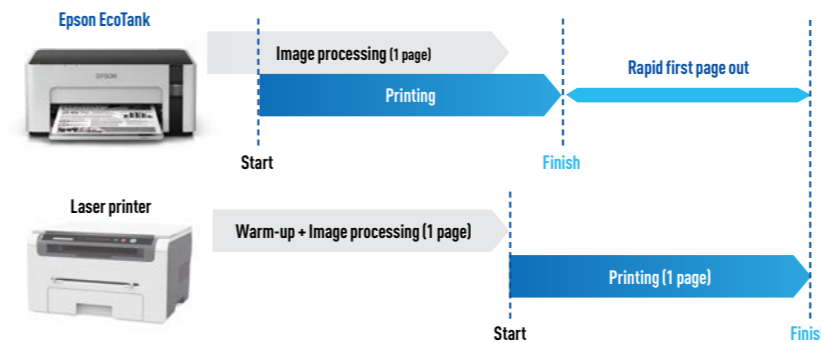
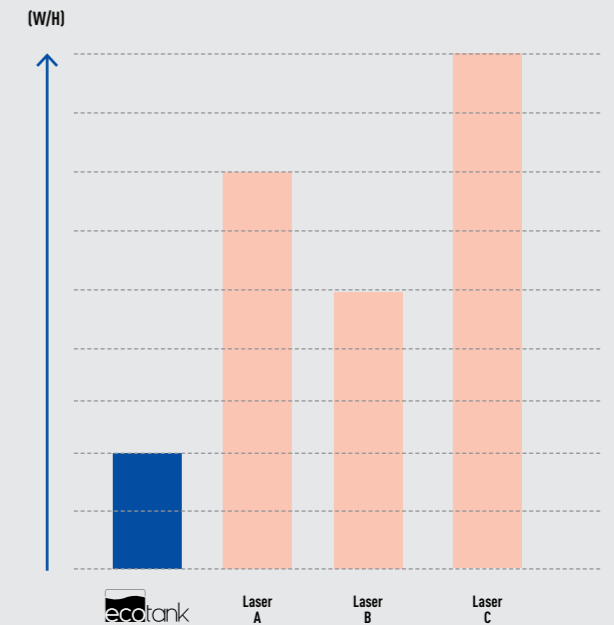
Business quality prints

Epson genuine inks are designed to guarantee the optimum performance of the printer, ink and media.

In addition, DURABrite ET INK² is specifically developed to ensure optimal business document print quality. This pigment ink is water-resistant, which increases the durability of the printouts.

Lower power consumption

Epson EcoTank printers are excellent at reducing both the costs you can see and those you can't, making a significant contribution to an overall reduction of printing related costs. The reduction in energy and resources consumption provided as a result is also environmentally considerate.



Fast first-page printing

Unlike laser printers, which must process an entire page of image data before they print, EcoTank printer can process image data while they print. This gives EcoTank a significant advantage in first print out time. In addition, laser printers use heat to fuse the toner to paper. As a result, they require warm-up time to heat the fusing roller when they start up.

50%
Paper saving

Perfect for eco-conscious printing

EcoTank printers can also help you save money and reduce paper consumption by 50% by using auto duplex printing¹ to print on both sides of each sheet of paper.



¹ Applicable to 001 and 008 ink bottles (page yield of 6,000 for colour and 7,500 for black). For more information, please refer to the EcoTank printers quick guide on Page 12 to 14. Page yield applicable for after-market ink bottles.
² Applicable for 008 inks only.

¹ Applies to L3550, L3556, L4260, L5590, L6260, L6270, L6290, L6460, L6490, L8050, L14150, L15150, L18050, M1140, M2140, M3170, M15140.



Feature-packed and compact

EcoTank uses a compact and stylish design that incorporates the ink tank into the printer body, making them a perfect fit for any office space. And with virtually all controls and consumables accessible from the front of the printer, it's easy to find the right spot for your machine.

Less maintenance and less downtime

Epson EcoTank printers require less time and effort to maintain. Compared to laser printers, they have a simpler mechanism and fewer periodic replacement parts. With selected models, you can also purchase a user-replaceable maintenance box¹ for even simpler upkeep.

Epson EcoTank



Laser printer



Reduced paper loading frequency

Big print jobs are no problem because selected EcoTank printers² come with high-capacity paper trays that reduce the need for frequent paper loading.

High reliability and high durability

Epson has achieved greater robustness and longer service life by making countless improvements to every aspect of the device, from the frame and components to the printhead, which is the heart of our inkjet printers.

Since EcoTank's printheads do not use heat or come in contact with media, there is no degradation caused by friction and heat. The piezo elements are also made from a highly durable ceramic that can be used semi-permanently.



Warranty inclusive of printheads



2 years for EcoTank colour printers³



4 years for EcoTank monochrome printers⁴

Epson Connect

Selected Epson printers support Epson Connect, a service that offers a range of convenient solutions for wireless and remote printing.

Print from anywhere:

Send documents and photos directly to any email-enabled Epson printer, no matter where you are.

Print nearby:

Print to an Epson Printer from your device in the same network or directly with Wi-Fi direct.

Scan and Share:

Scan and share images using your Epson printer via Email, Cloud services or with other apps.



Print Directly via Mobile Devices¹

Apple AirPrint

Print wirelessly from your iPad, iPhone or iPod touch to nearby Epson printers.

Mopria Print Service

Enhance the print functionality on Android phones and tablets, allowing you to conveniently print with Epson printers.

Epson Print Enabler

Enable the built-in print functions of Android 4.4 devices for convenient printing.

Comparison of consumables and periodic replacement parts Note: Actual type and number of periodic replacement parts vary by model.

¹ Applies to L6260, L6270, L6290, L6460, L6490, L14150, L15150, M1140, M2140, M3170, M15140.

² For more information, please refer to detailed product specification information.

³ Except for L8050, L850 and L18050. Page conditions apply. For more information, please refer to detailed product specification information.

⁴ Page conditions apply. For more information, please refer to detailed product specification information.

¹ Connectivity features only apply to selected models, please refer to printer connectivity chart.

Epson Email Print¹ - Anytime, anywhere printing from any device

Epson Connect assigns a unique e-mail address to each printer, so users can send e-mails with attached files directly to the printer, and the printer will automatically print the e-mail and attached documents. There is no need to install a printer driver, and no need for any human interaction on the receiving end.



Prepare document for distribution to all branch offices and attach it to an e-mail message.

Sender can be at any office and be assured that the e-mail message and attached document will automatically be printed out at branch offices worldwide.

Recommended for: Quick and easy printing from any device with email capabilities such as Apple®, Android®, BlackBerry®, Google Chromebooks and Windows® devices to an Epson email-enabled printer.

How Email Print works



1 Setup

Activate Epson Connect to get an email address for your printer.



2 Email

Send your photos and files to the printer's email address.



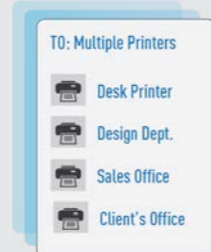
3 Print

Automatically print emails, photos, PDFs and Microsoft Office files.



Easy to remember

Want to change your printer's automatically assigned email? Just use your Epson Connect account to customise your printer's email address to make it easier to remember.



Send and print to multiple recipients

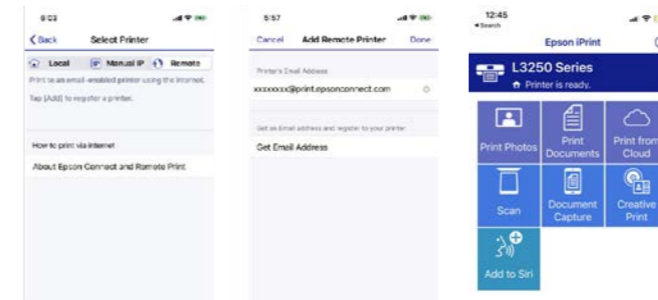
When sending files, you can include more than one printer email address in the To: or CC: fields. You can email your client a document and simultaneously send it to print at her office. Or, if you want to print a photo for all of the attendees after an event, you can just send one email to multiple printers.

Remote Print Driver¹ - Print beyond your home or office network

Remote Print enables printing through the internet from your computer, smartphone or tablet. It's as simple as clicking on File/Print to send your file to an Epson printer from anywhere in the world. Enjoy hassle-free printing via iPrint on your smartphone or tablet with just a few clicks.

How Remote Print Driver works

Enable Remote Print in Epson iPrint



1 Select

Select "Remote" tab when selecting printer and click "Add"

2 Key

Key in the printer's email address and click "Done"

3 Print

iPrint remote printing is available via Internet

Remote Print Drive on PC/Laptop



Install the Remote Print Driver

Print through your PC or mobile devices from anywhere in the world

Scan to Cloud¹ - Scan and share from your printer

Your Epson printer is now an onramp to the Cloud. With an Internet connection, you can scan documents or photos with a few taps on the printer's control panel—then you can share your scanned file to preset email addresses or online cloud storage accounts, without the need for an attached printer.



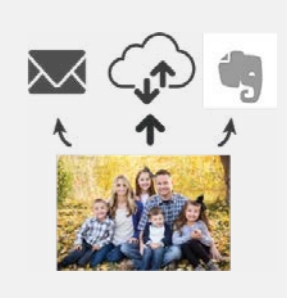
1 Select

Select Scan to Cloud from the printer's control panel.



2 Scan

Scan your document.

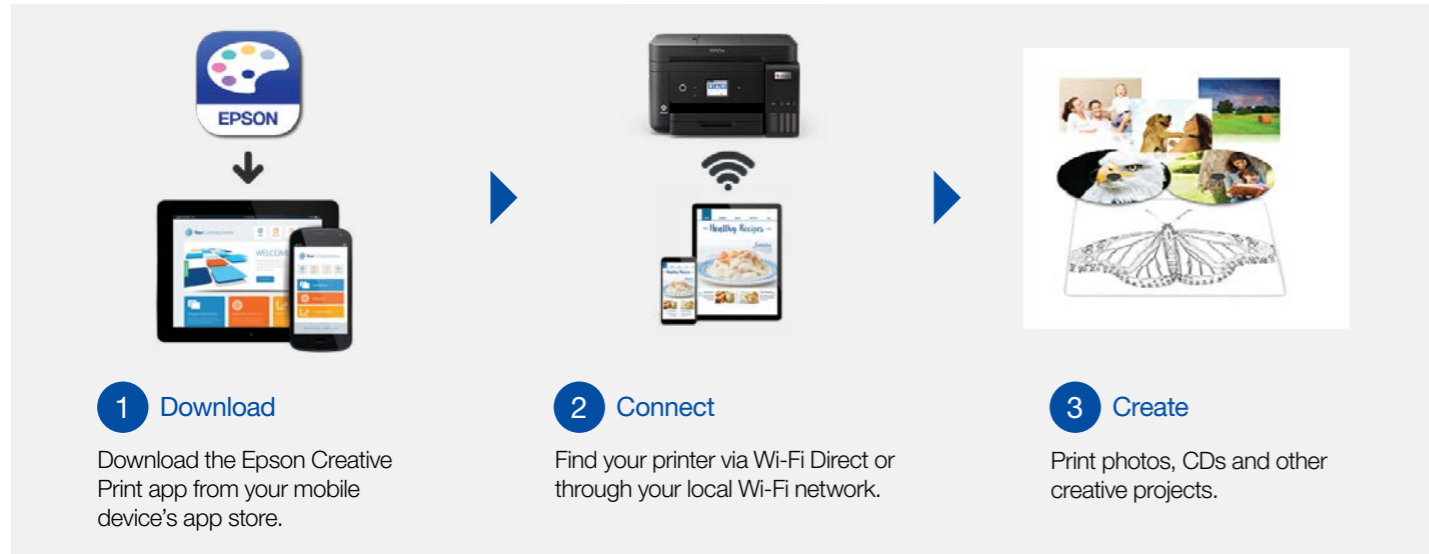


3 Save

Email your file or save it to an online storage service.

Epson Creative Print¹ app

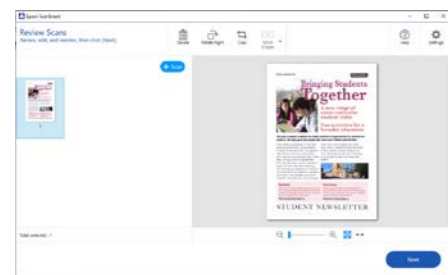
Customise and share your photos, personal messages and more. Creative Print can access and print your Facebook photos, create collages with your photos from Instagram and your mobile device, create custom greeting cards and stationery, and turn photos into colouring book templates.



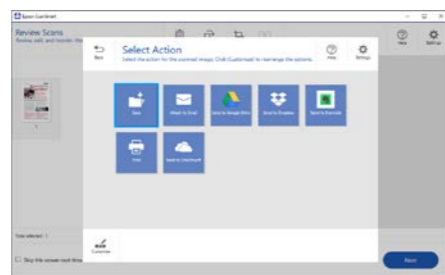
Recommended for: Personalised printing from Apple iPhone, iPad, and Android phones and tablets. Creative Print only works with selected EcoTank printers.

Epson ScanSmart

For businesses looking to maximise productivity and optimise resources, Epson has a solution that takes care of the details of the workflow process. You can now scan and edit documents with Epson ScanSmart².



Perform simple document editing before output
Review, rearrange and rotate pages quickly right after scanning, before saving the document as a single file.



Versatile output capability
Attached scanned documents as email documents or send them to cloud storage services.



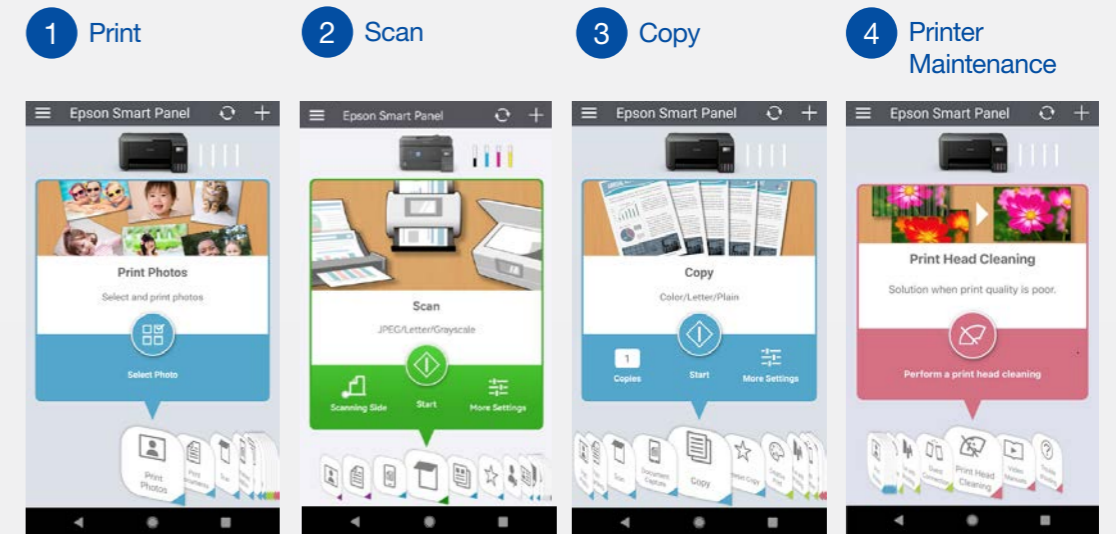
Save your files to editable formats
Scan scanned images into editable formats as such as PDF, Searchable PDF, JPEG, TIFF, Multi-TIFF, PNG, BMP.



Epson Smart Panel

Turn your mobile device into a high-performance command center. Epson Smart Panel enables you to control your printer from smart phones and tablets so you can print, copy, scan, and troubleshoot directly through the app.

The Epson Smart Panel App also provides a stress-free printer initialisation for users via a chat format manual. With simple wireless setup via Bluetooth[®] connection, you can now easily add your Epson EcoTank to your network.



Basic features	Print Photo	Print Document	Scan	Document Capture	Copy
Advanced features	Creative Print	Guest Connection	Fun with Printing	Access to Class	
Maintenance & support	Print Head Cleaning	Video Manuals	Trouble Shooting		



¹ Connectivity features only apply to selected models, please refer to printer connectivity chart.
² Applicable to L3000, L4000, L5000, L6000 series, L14150, L15150 and M15140 only.

¹ For a list of compatible printers, check with your local Epson Authorised Dealers for more details.
² Requires Epson Smart Panel app download. Data usage fees may apply.
³ Compatible mobile device operating systems — for iOS: 11.0 or later; for iPadOS: OS 13.1 or later; for Android: 5.0 or later
⁴ All pictures shown are for illustration purpose only. Actual product may vary due to product enhancement.

EPSON ECOTANK PRINTERS	FOR HOME USERS AND STUDENTS					FOR PHOTO ENTHUSIASTS				
	L121	L1210	L1250	L3210	L3250	L3550	L8050	L850	L18050	L1300
Features										
Draft Print Speed A4 (Black / Colour)	-	33 / 15 ppm	33 / 15 ppm	33 / 15 ppm	33 / 15 ppm	33 / 20 ppm	22 / 22 ppm	37 / 38 ppm	22 / 22 ppm	30 / 17 ppm
ISO 24734 Simplex A4 (Black / Colour)	9.0 / 4.8 ipm	10 / 5.0 ipm	10 / 5.0 ipm	10 / 5.0 ipm	10 / 5.0 ipm	15 / 8.0 ipm	8.0 / 8.0 ipm	5.0 / 4.8 ipm	8.0 / 8.0 ipm	15 / 5.5 ipm
ISO 24734 Duplex A4 (Black / Colour)	-	-	-	-	-	-	-	-	-	-
Photo Print Speed 4R, Default, Border	-	69 sec	69 sec	69 sec	69 sec	69 sec	25 sec	-	27 sec	58 sec
Photo Print Speed 4R, Default, Borderless	-	90 sec	90 sec	90 sec	90 sec	90 sec	25 sec	27 sec	27 sec	-
Page Yield (Black / Colour)	4,500 / 7,500 pages	4,500 / 7,500 pages	4,500 / 7,500 pages	4,500 / 7,500 pages	4,500 / 7,500 pages	4,300 / 7,300 pages	5,600 / 2,100 4R photos	1,800 4R photos	5,600 / 2,100 4R photos	7,100 ² / 5,700 pages
Max Print Resolution	720 x 720 dpi	5,760 x 1,440 dpi	5,760 x 1,440 dpi	5,760 x 1,440 dpi	5,760 x 1,440 dpi	4,800 x 1,200 dpi	5,760 x 1,440 dpi	5,760 x 1,440 dpi	5,760 x 1,440 dpi	5,760 x 1,440 dpi
Scanner Optical Resolution	-	-	-	600 x 1,200 dpi	1,200 x 2,400 dpi	1,200 x 2,400 dpi	-	1,200 x 2,400 dpi	-	-
Warranty	2 years or 20,000 pages	2 years or 30,000 pages	2 years or 30,000 pages	2 years or 30,000 pages	2 years or 30,000 pages	2 years or 50,000 pages	2 years or 50,000 pages (A4)	1 year or 3,000 photo prints	2 years or 50,000 pages (A4)	2 years or 30,000 pages
Ink Model	664	003	003	003	003	003	057	673	057	664
Dimensions (W x D x H)	461 x 215 x 130 mm	375 x 347 x 169 mm	375 x 347 x 169 mm	375 x 347 x 179 mm	375 x 347 x 179 mm	375 x 347 x 179 mm	403 x 369 x 150 mm	542 x 386 x 196 mm	523 x 369 x 150 mm	705 x 322 x 215 mm
Weight	2.4 kg	2.8 kg	2.9 kg	3.9 kg	3.9 kg	4.1 kg	6.0 kg	9.1 kg	8.0 kg	12.2 kg

1 For more information about supported Epson Connect features, please visit www.epson.com.sg/connect
2 Based on 2 bottles of 70ml black ink. All copy and print speeds are approximate based on individual specifications. Please refer to the brochures for more information.
3 For a list of compatible printers, check with your local Epson Authorised Dealers for more details.

EPSON ECOTANK PRINTERS	FOR SMALL BUSINESSES AND HOME OFFICES									
	L4260	L5290	L5590	L6260	L6270	L6290	L6460	L6490	L14150	L15150
Features										
Draft Print Speed A4 (Black / Colour)	33 / 15 ppm	33 / 15 ppm	33 / 20 ppm	33 / 20 ppm	33 / 20 ppm	33 / 20 ppm	37 / 23 ppm	37 / 23 ppm	38 / 24 ppm	32 / 22 ppm
ISO 24734 Simplex A4 (Black / Colour)	10.5 / 5.0 ipm	10 / 5.0 ipm	15 / 8.0 ipm	15 / 8.0 ipm	15.5 / 8.5 ipm	15.5 / 8.5 ipm	17 / 9.5 ipm	17 / 9.5 ipm	17 / 9.0 ipm	25 / 12 ipm
ISO 24734 Duplex A4 (Black / Colour)	6.0 / 4.0 ipm	-	-	6.5 / 4.5 ipm	6.5 / 4.5 ipm	6.5 / 4.5 ipm	7.5 / 5.0 ipm	7.5 / 5.0 ipm	7.0 / 5.0 ipm	16 / 9.0 ipm
Photo Print Speed 4R, Default, Border	69 sec	69 sec	69 sec	69 sec	69 sec	69 sec	-	-	71 sec	43 sec
Photo Print Speed 4R, Default, Borderless	92 sec	90 sec	90 sec	92 sec	92 sec	92 sec	-	-	95 sec	52 sec
Page Yield (Black / Colour)	7,500 / 6,000 4R photos	4,500 / 7,500 pages	4,300 / 7,300 pages	7,500 / 6,000 pages	7,500 / 6,000 pages	7,500 / 6,000 pages	7,500 / 6,000 pages	7,500 / 6,000 pages	7,500 / 6,000 pages	7,500 / 6,000 pages
Max Print Resolution	5,760 x 1,440 dpi	5,760 x 1,440 dpi	4,800 x 1,200 dpi	4,800 x 1,200 dpi	4,800 x 1,200 dpi	4,800 x 1,200 dpi	4,800 x 1,200 dpi	4,800 x 1,200 dpi	4,800 x 1,200 dpi	4,800 x 2,400 dpi
Scanner Optical Resolution	1,200 x 2,400 dpi	1,200 x 2,400 dpi	1,200 x 2,400 dpi	1,200 x 2,400 dpi	1,200 x 2,400 dpi	1,200 x 2,400 dpi	1,200 x 2,400 dpi	1,200 x 2,400 dpi	1,200 x 2,400 dpi	1,200 x 2,400 dpi
Warranty	2 years or 30,000 pages	2 years or 30,000 pages	2 years or 50,000 pages	2 years or 50,000 pages	2 years or 50,000 pages	2 years or 50,000 pages	2 years or 50,000 pages	2 years or 50,000 pages	2 years or 80,000 pages	2 years or 80,000 pages
Ink Model	001	003	003	001	001	001	008	008	001	008
Dimensions (W x D x H)	375 x 347 x 187 mm	375 x 347 x 237 mm	375 x 347 x 237 mm	375 x 347 x 187 mm	375 x 347 x 231 mm	375 x 347 x 231 mm	375 x 347 x 346 mm	375 x 347 x 346 mm	498 x 358 x 245 mm	515 x 500 x 350 mm
Weight	5.4 kg	5.0 kg	5.2 kg	5.7 kg	6.7 kg	6.7 kg	7.3 kg	7.3 kg	9.7 kg	20.7 kg

1 For more information about supported Epson Connect features, please visit www.epson.com.sg/connect
2 Based on 2 bottles of 70ml black ink. All copy and print speeds are approximate based on individual specifications. Please refer to the brochures for more information.
3 For a list of compatible printers, check with your local Epson Authorised Dealers for more details.

EPSON ECOTANK PRINTERS	MONOCHROME PRINTERS FOR SMALL BUSINESS AND HOME OFFICE							
	M1100	M1120	M1140	M1170	M2140	M2170	M3170	M15140
Features								
Draft Print Speed A4 (Black / Colour)	32 ppm	32 ppm	39 ppm	39 ppm	39 ppm	39 ppm	39 ppm	32 ppm
ISO 24734 Simplex A4 (Black / Colour)	15 ipm	15 ipm	20 ipm	20 ipm	20 ipm	20 ipm	20 ipm	25 ipm
ISO 24734 Duplex A4 (Black)	-	-	9.0 ipm	9.0 ipm	9.0 ipm	9.0 ipm	9.0 ipm	16 ipm
Copy Speed ISO 29183 Simplex A4	-	-	-	-	17 ipm	17 ipm	17 ipm	23 ipm
Scan Speed, Flatbed, 200 dpi (Monochrome / Colour)	-	-	-	-	12 sec / 27 sec	12 sec / 27 sec	12 sec / 27 sec	5 sec / 10 sec
Page Yield (Black)	2,000 pages (005s) / 6,000 pages (005)	2,000 pages (005s) / 6,000 pages (005)	2,000 pages (005s) / 6,000 pages (005)	2,000 pages (005s) / 6,000 pages (005)	2,000 pages (005s) / 6,000 pages (005)	2,000 pages (005s) / 6,000 pages (005)	2,000 pages (005s) / 6,000 pages (005)	7,500 pages
Max Print Resolution	1,440 x 720 dpi	1,440 x 720 dpi	1,200 x 2,400 dpi	1,200 x 2,400 dpi	1,200 x 2,400 dpi	1,200 x 2,400 dpi	1,200 x 2,400 dpi	4,800 x 2,400 dpi
Scanner Optical Resolution	-	-	-	-	1,200 x 2,400 dpi	1,200 x 2,400 dpi	1,200 x 2,400 dpi	1,200 x 2,400 dpi
Warranty	4 years or 50,000 pages	4 years or 50,000 pages	4 years or 50,000 pages	4 years or 50,000 pages	4 years or 50,000 pages	4 years or 50,000 pages	4 years or 50,000 pages	4 years or 150,000 pages
Ink Model	005s 005	005s 005	005s 005	005s 005	005s 005	005s 005	005s 005	008
Dimensions (W x D x H)	375 x 267 x 161 mm	375 x 267 x 161 mm	375 x 347 x 151 mm	375 x 347 x 151 mm	375 x 347 x 302 mm	375 x 347 x 302 mm	375 x 347 x 346 mm	515 x 500 x 350 mm
Weight	3.5 kg	3.5 kg	4.3 kg	4.3 kg	6.2 kg	6.2 kg	7.3 kg	20.2 kg

Ink compatibility

INK CODE	005s	005	664			003			001			008			673				057											
COLOUR	Pigment Black	Pigment Black	Black	Magenta	Cyan	Yellow	Black	Magenta	Cyan	Yellow	Black	Magenta	Cyan	Yellow	Black	Magenta	Cyan	Yellow	Black	Magenta	Cyan	Yellow	Light Cyan	Light Magenta	Black	Magenta	Cyan	Yellow	Light Cyan	Light Magenta
MSRP	\$9.90	\$14.90	\$9.90	\$9.90	\$9.90	\$9.90	\$9.90	\$9.90	\$9.90	\$9.90	\$14.90	\$9.90	\$9.90	\$9.90	\$24.90	\$19.90	\$19.90	\$19.90	\$15.90	\$15.90	\$15.90	\$15.90	\$15.90	\$15.90	\$17.90	\$17.90	\$17.90	\$17.90	\$17.90	\$17.90
M1100	●	●																												
M1120	●	●																												
M1140	●	●																												
M2140	●	●																												
M1170	●	●																												
M2170	●	●																												
M3170	●	●																												
M15140															●															
L121			●	●	●	●																								
L1300			●	●	●	●																								
L1210							●	●	●	●																				
L1250							●	●	●	●																				
L3210							●	●	●	●																				
L3250							●	●	●	●																				
L3550							●	●	●	●																				
L5290							●	●	●	●																				
L5590							●	●	●	●																				
L4260											●	●	●	●																
L6260											●	●	●	●																
L6270											●	●	●	●																
L6290											●	●	●	●																
L6460															●	●	●	●												
L6490															●	●	●	●												
L14150											●	●	●	●																
L15150															●	●	●	●												
L8050																									●	●	●	●	●	●
L850																									●	●	●	●	●	●
L18050																									●	●	●	●	●	●

Printer connectivity features

PRINTER MODEL	Epson Smart Panel	Epson iPrint	Epson Creative Print	Epson Email Print	Remote Print Driver	Scan to Cloud	Epson Print Enabler	Apple AirPrint	Mopria Print Service
L1250	●	●	●	●	●		●		
L3250	●	●	●	●	●		●		
L3550	●	●	●	●	●		●		
L4260	●	●	●	●	●		●	●	●
L5290	●	●	●	●	●		●	●	●
L5590	●	●	●	●	●		●	●	●
L6260	●	●	●	●	●	●	●	●	●
L6270	●	●	●	●	●	●	●	●	●
L6290	●	●	●	●	●	●	●	●	●
L6460	●	●	●	●	●	●	●	●	●
L6490	●	●	●	●	●	●	●	●	●
L8050	●	●	●	●	●		●		
L850									
L18050	●	●	●	●	●		●		
L1300									
L14150	●	●	●	●	●	●	●	●	●
L15150	●	●	●	●	●	●	●	●	●
M1120		●					●		
M1170		●					●		●
M2170		●				●	●	●	●
M3170		●				●	●	●	●
M15140	●	●		●	●	●	●	●	●

1 For more information about supported Epson Connect features, please visit www.epson.com.sg/connect
 2 For a list of compatible printers, check with your local Epson Authorised Dealers for more details.
 All copy and print speeds are approximate based on individual specifications. Please refer to the brochures for more information.

EPSON

© 2023 Epson Singapore Pte Ltd. All Rights Reserved. Reproduction in part or in whole, without the written permission from Epson, is strictly prohibited. EPSON is a registered trademark of Seiko Epson Corporation. All other products names and other company names used herein are for identification purposes only and are the trademarks or registered trademarks of their respective owners. Epson disclaims any and all rights in those marks. Print samples shown are simulations only. Specifications and product availability are subject to change without notice and may vary between countries. Please check with local Epson offices for more information.

Apple, iPad and iPhone are trademarks of Apple Inc., registered in the U.S. and other countries.

App Store is a service mark of Apple Inc. Android is a trademark of Google Inc.

Dealer's Stamp

Information correct at time of printing
Printed August 2023