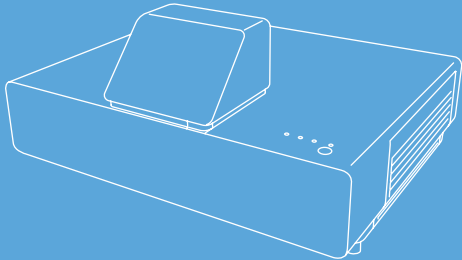


EPSON®
EXCEED YOUR VISION

Home Projector

EH-LS500W Android TV™ edition

EH-LS500B Android TV™ edition

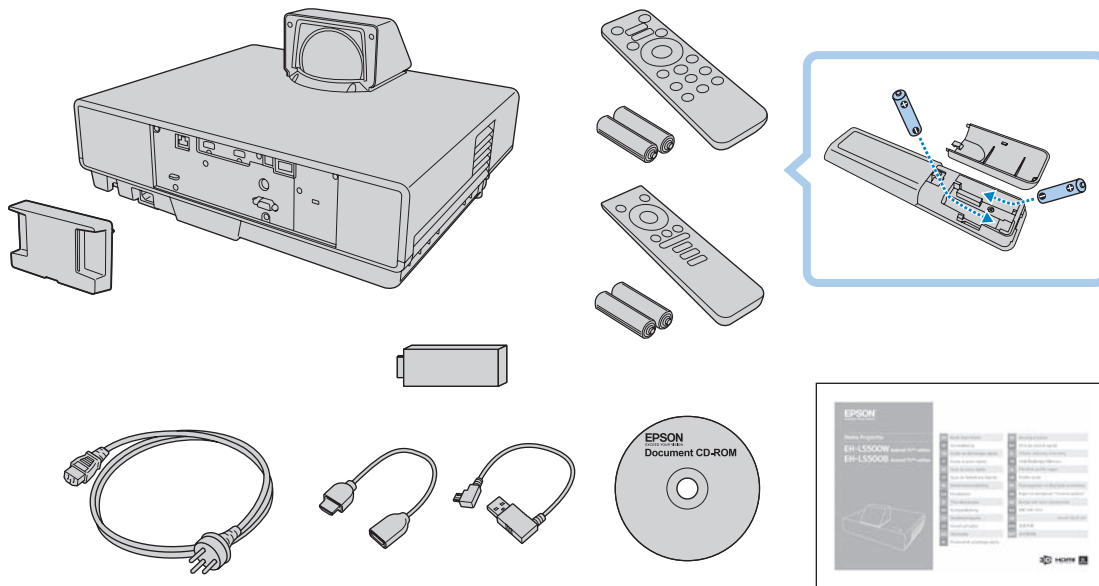


EN	Quick Start Guide	SK	Stručná príručka
DE	Kurzanleitung	RO	Ghid de pornire rapidă
FR	Guide de démarrage rapide	EL	Οδηγός γρήγορης εκκίνησης
IT	Guida di avvio rapido	TR	Hızlı Başlangıç Kılavuzu
ES	Guía de inicio rápido	SL	Priročnik za hitri zagon
PT	Guia de Referência Rápida	HR	Kratke upute
NL	Introductiehandleiding	RU	Руководство по быстрой установке
DA	Introduktion	UK	Коротка інструкція "Початок роботи"
FI	Pika-aloitusopas	KK	Қысқа іске қосу нұсқаулығы
NO	Hurtigveiledning	KO	빠른 시작 가이드
SV	Snabbstartsguide	AR	دليل البداية السريعة
CS	Úvodní příručka	ZHS	設定手冊
HU	Bevezetés	ZHT	設定說明書
PL	Przewodnik szybkiego startu		



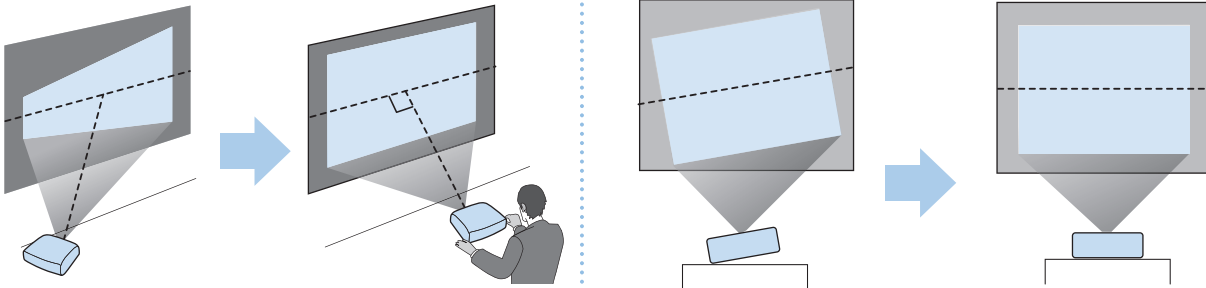
Unpacking

1

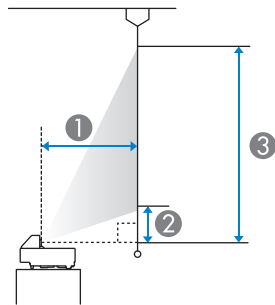


Setting Up

■ Installing

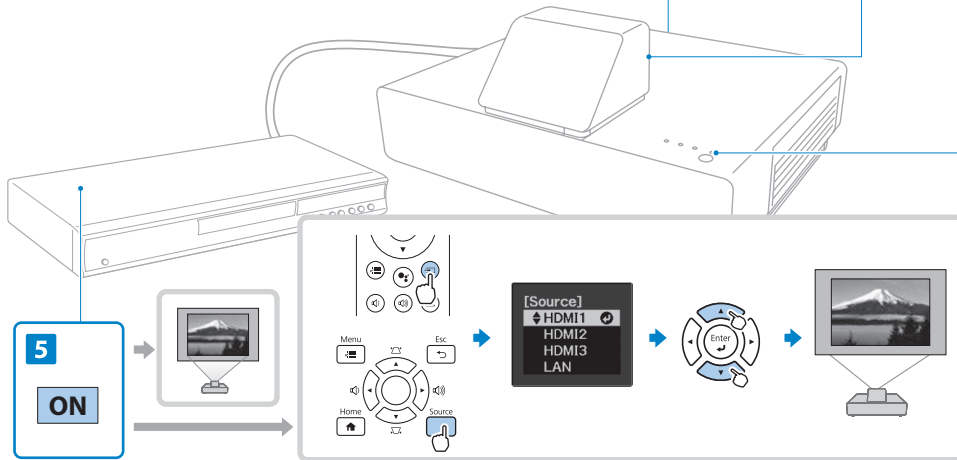
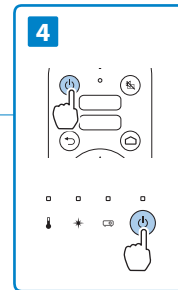
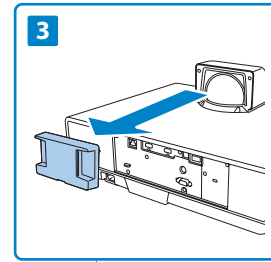
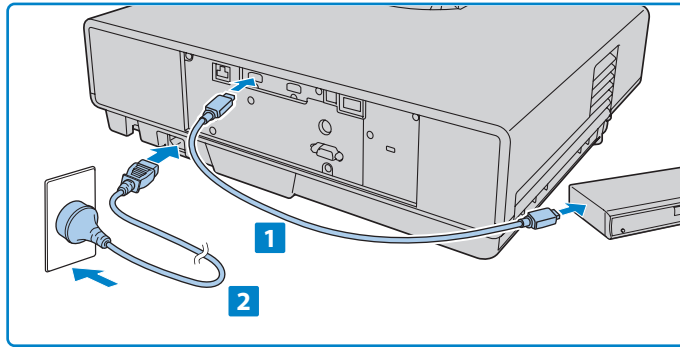


■ Screen Size and Projection Distance



16:9	①	②	③
70"	43 - 59cm	12cm	99cm
100"	62cm	17cm	142cm
130"	82cm	23cm	185cm

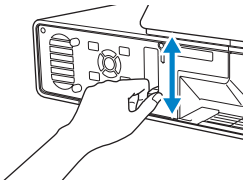
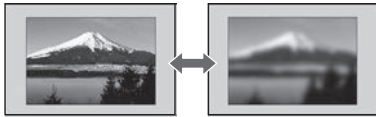
■ Connecting a Device



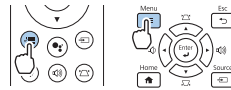
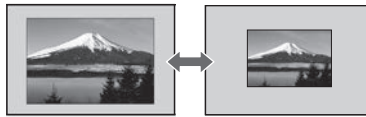
3

Adjusting

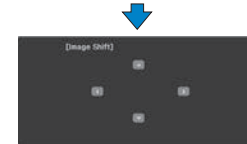
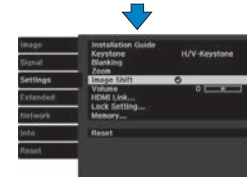
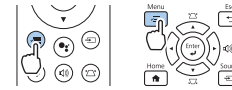
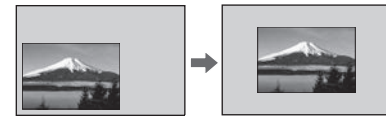
■ Focusing



■ Zooming

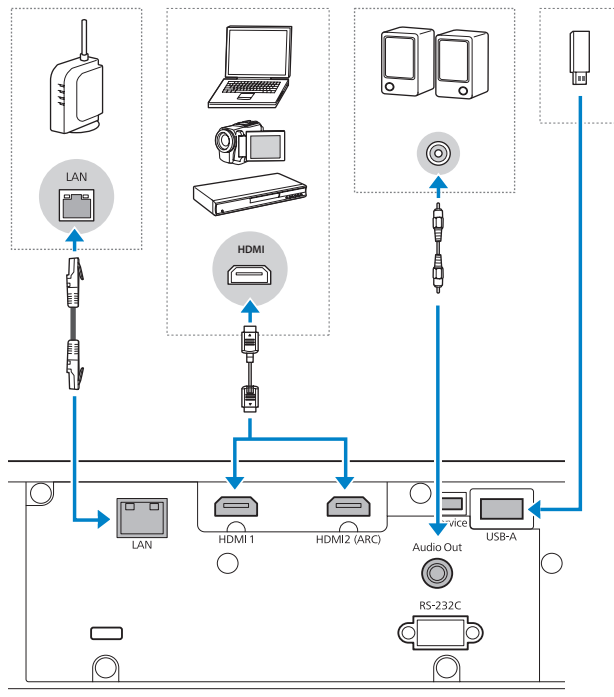


■ Adjusting the Position of the Image

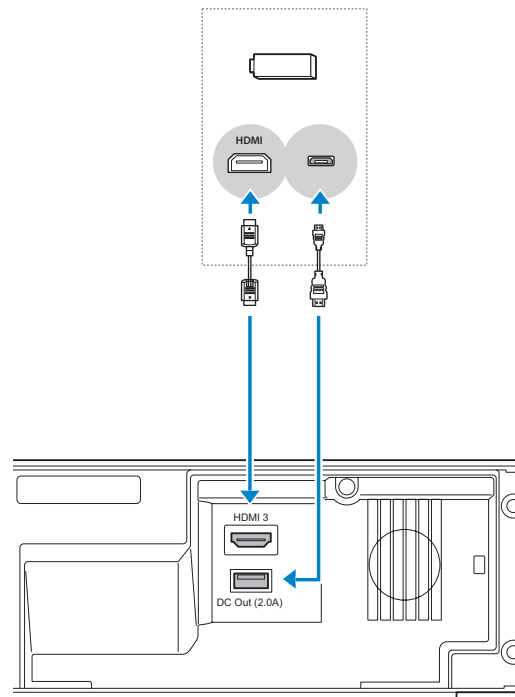


Connecting

5

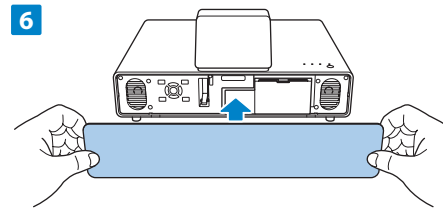
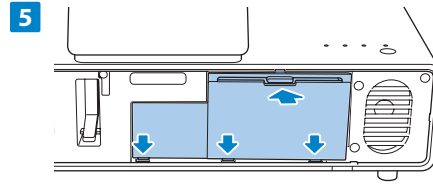
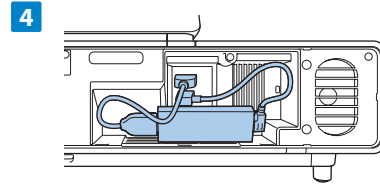
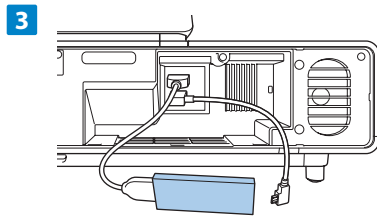
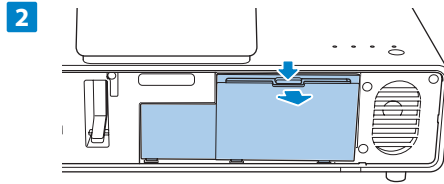
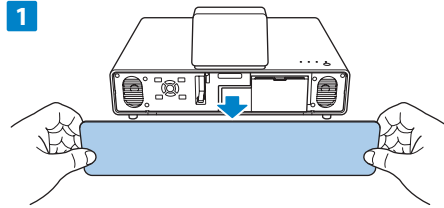


Rear

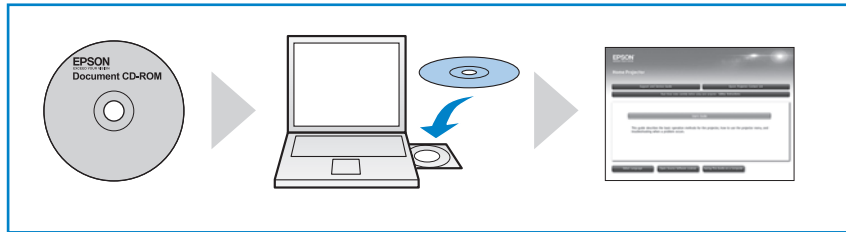


Front

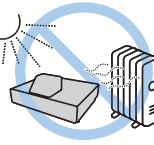
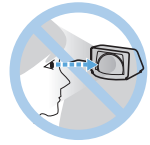
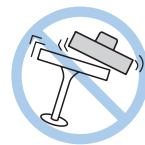
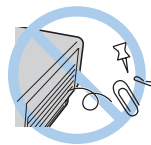
Connecting a Streaming Media Player



For More Information



or



413865200