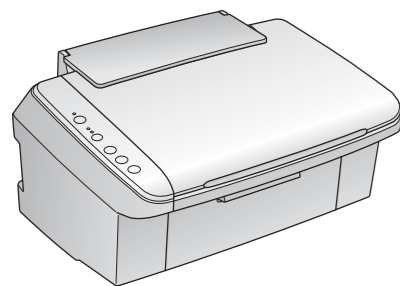


Start Here

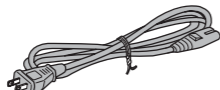
1. Unpacking



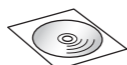
Note:
Do not open the ink cartridge package until you are ready to install it in the printer.
The cartridges are vacuum packed to maintain their reliability.



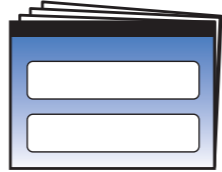
Ink Cartridges



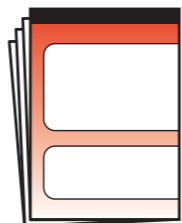
Power Cord



CD-ROM

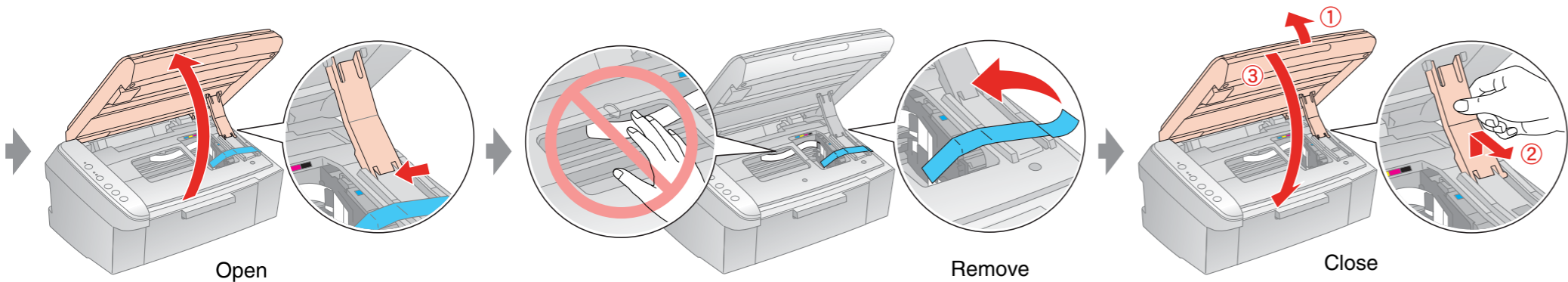
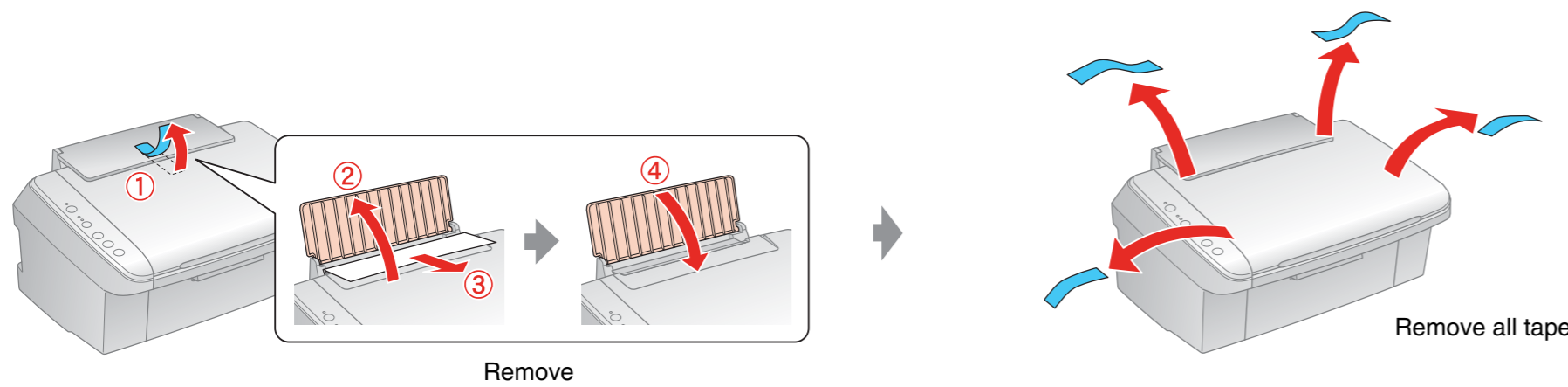


Start Here

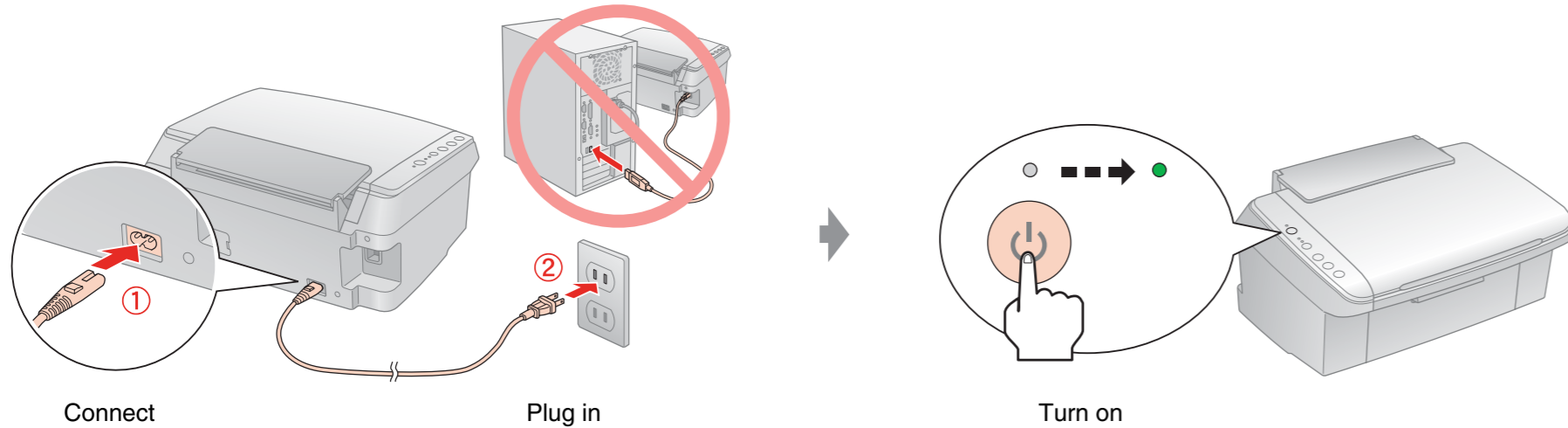


User's Guide

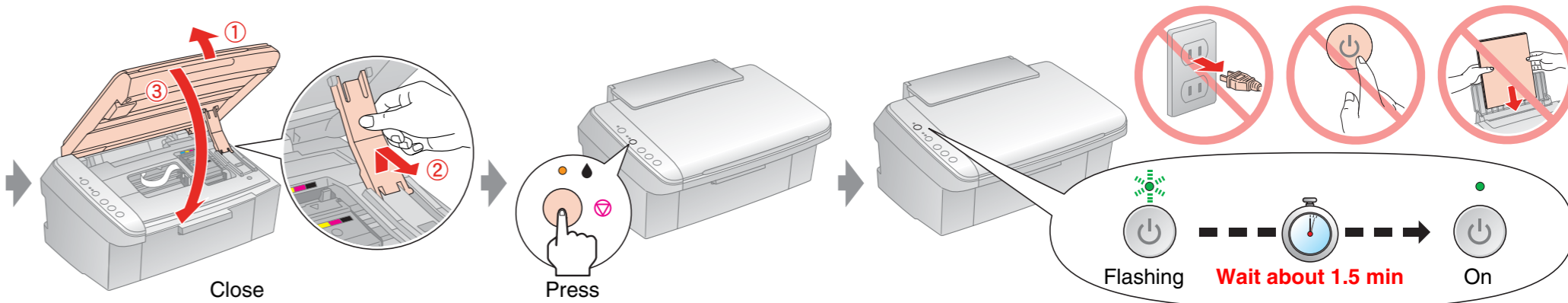
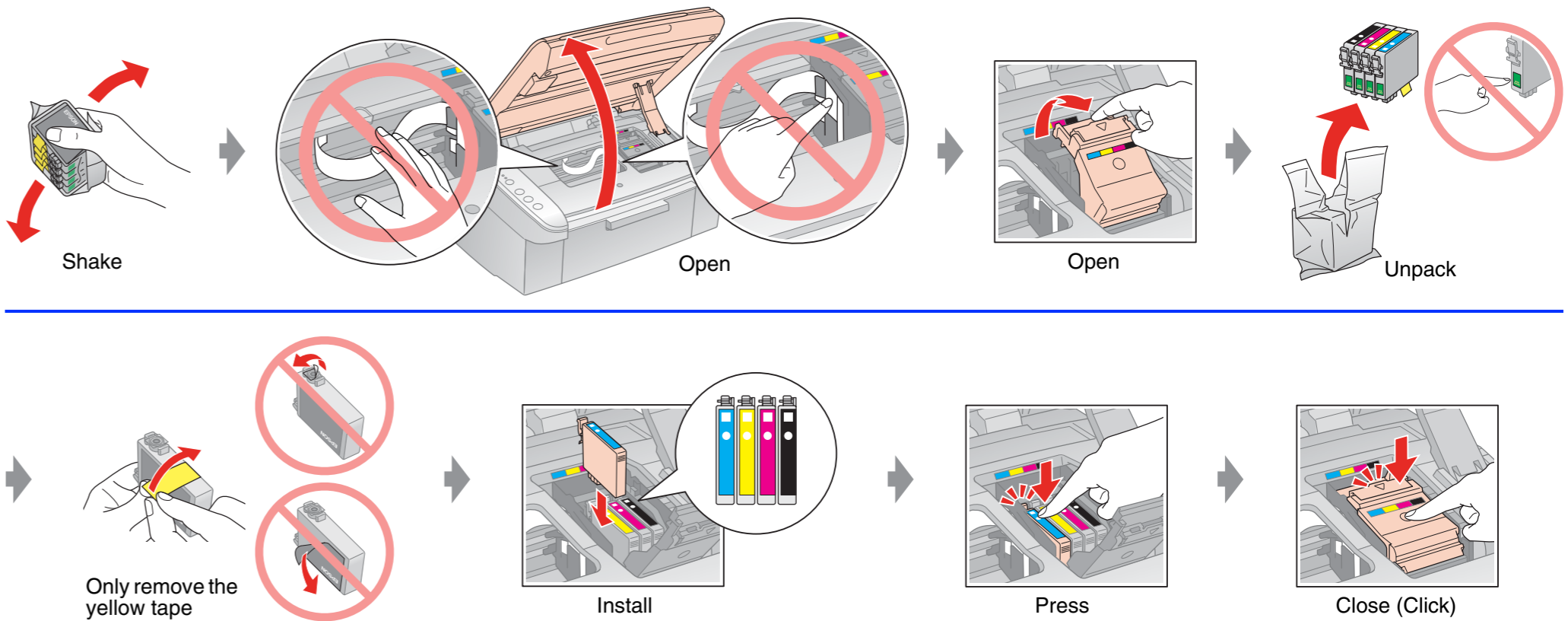
2. Removing Protective Tape and Cardboard



3. Turning On



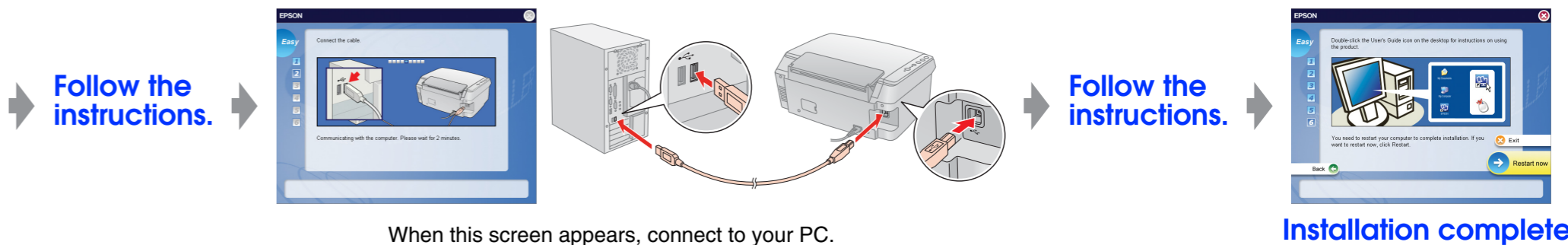
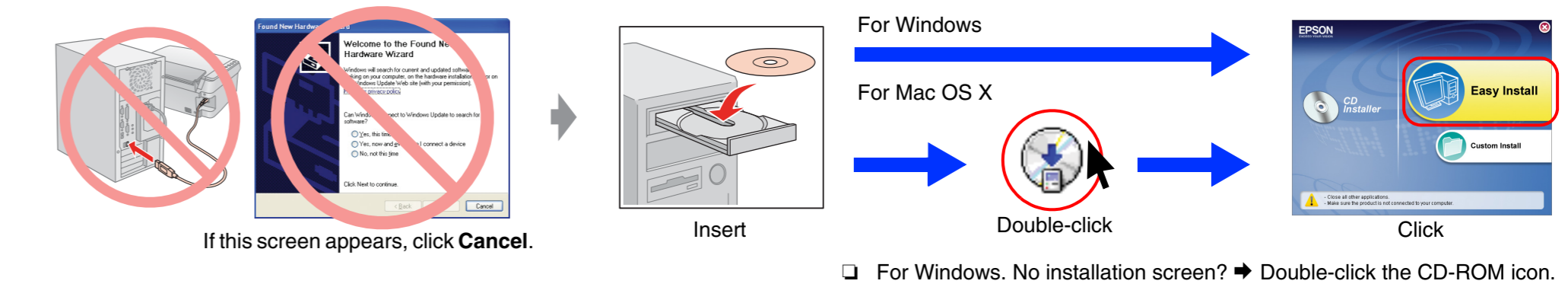
4. Installing Ink Cartridges



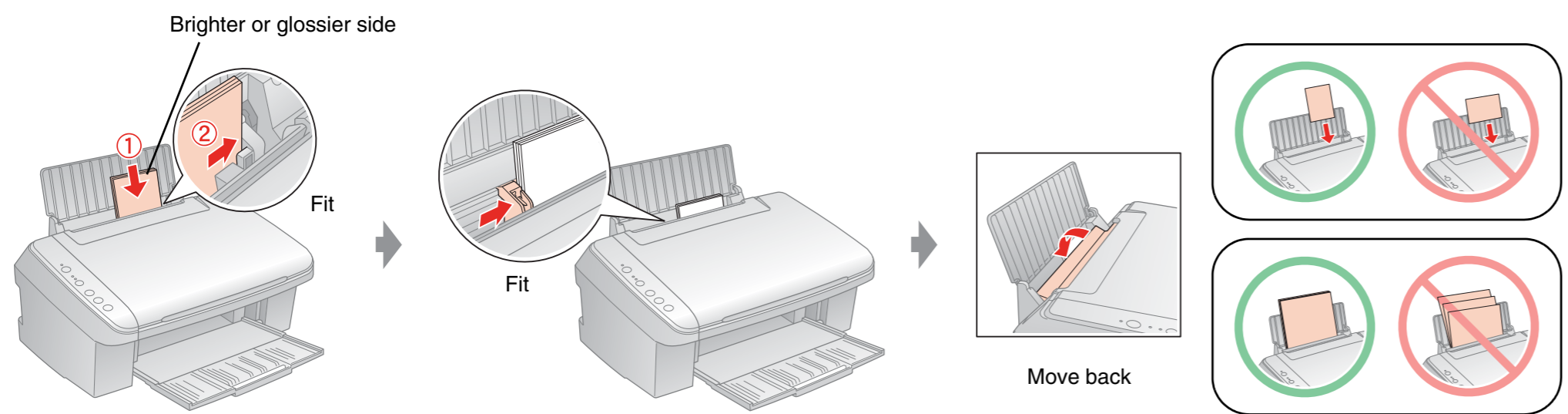
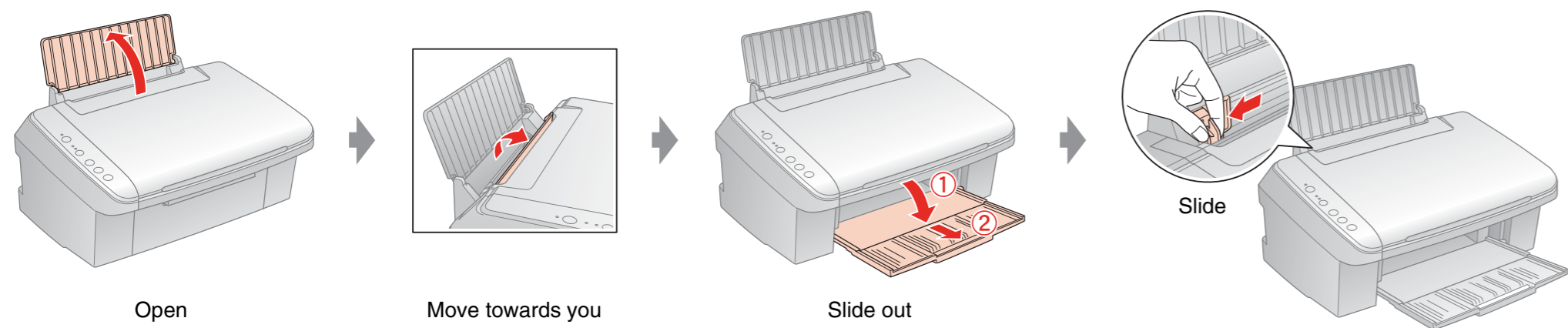
Note:
The ink cartridges first installed in your printer will be partly used to charge the print head. These cartridges print fewer pages compared to subsequent ink cartridges.

5. Installing the Software

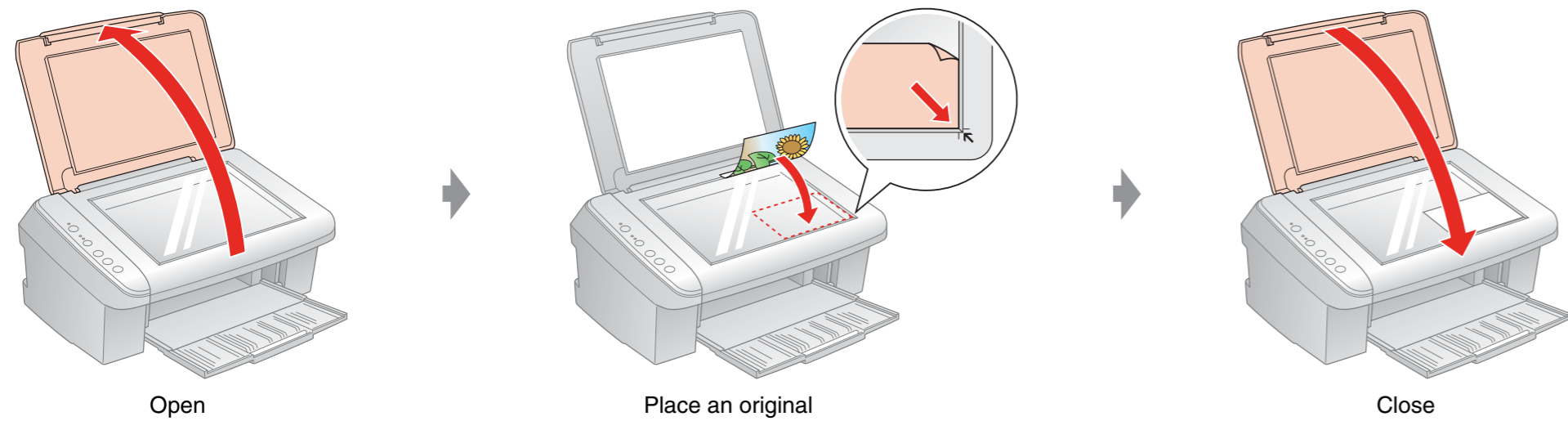
Do not connect the USB cable until you are instructed to do so.



Loading Paper



Placing an Original



Safety Instructions

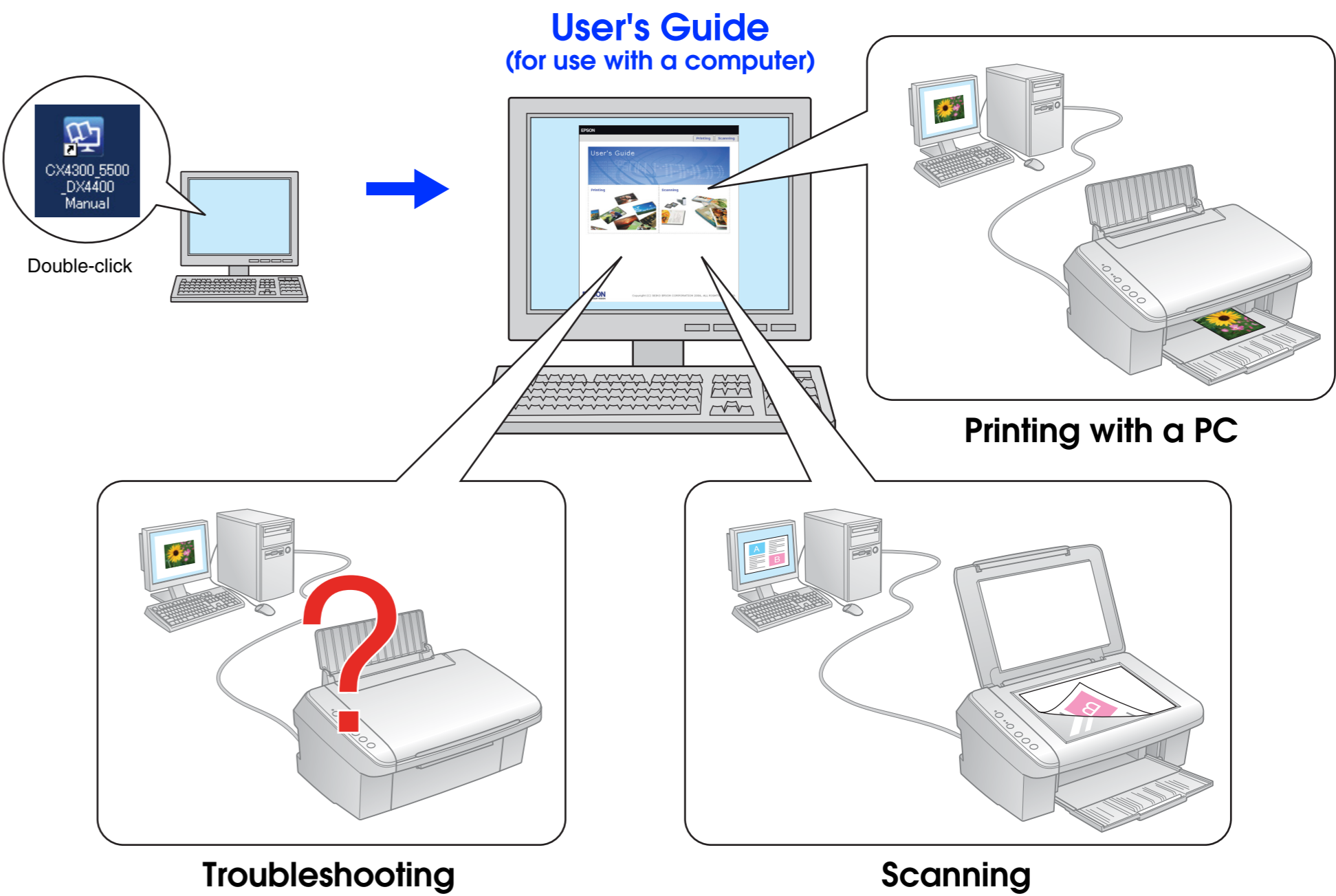
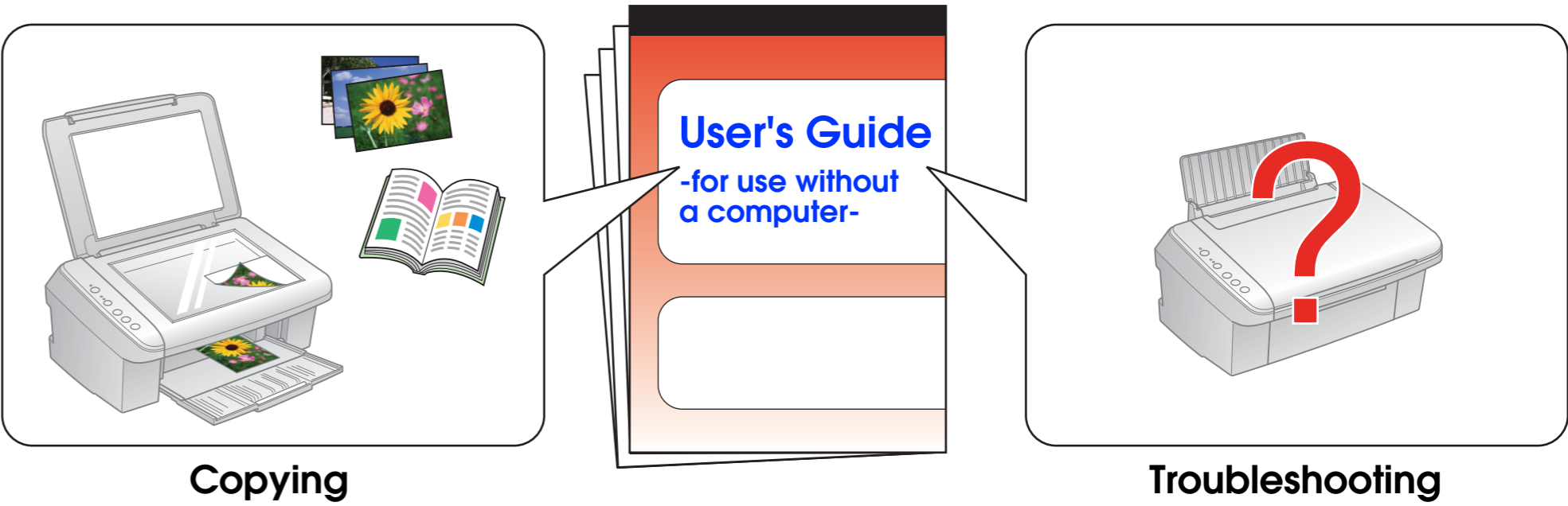
When placing the Epson Stylus CX

- ❑ Place the Epson Stylus CX near a wall outlet where the plug can be easily unplugged.
- ❑ Avoid locations that are subject to rapid changes in heat or humidity, shocks or vibrations, or dust.
- ❑ Leave enough room around the Epson Stylus CX for sufficient ventilation. Do not block or cover openings in the case or insert objects through the slots.
- ❑ Place the Epson Stylus CX on a flat, stable surface that extends beyond its base in all directions. It will not operate properly if it is tilted or at an angle.
- ❑ Make sure the back of the Epson Stylus CX is at least 10 cm away from the wall.
- ❑ When storing or transporting the Epson Stylus CX, do not tilt it, stand it on its side, or turn it upside down; otherwise ink may leak from the cartridge.

When choosing a power source

- ❑ Use only the type of power source indicated on the label.
- ❑ Use only the power cord that comes with the Epson Stylus CX. Use of another cord may cause fire or shock. Do not use the cord with any other equipment.
- ❑ Make sure the power cord meets the relevant local safety standards.
- ❑ Do not let the power cord become damaged or frayed.
- ❑ If you use an extension cord with the Epson Stylus CX, make sure the total ampere rating of the devices plugged into the extension cord does not exceed the cord's ampere rating. Also, make sure the total ampere rating of all devices plugged into the wall outlet does not exceed the wall outlet's ampere rating.

Getting More Information



When using the Epson Stylus CX

- ❑ Do not spill liquid on the Epson Stylus CX.
- ❑ Except as specifically explained in your documentation, do not attempt to service the Epson Stylus CX yourself.
- ❑ Unplug the Epson Stylus CX and refer servicing to qualified service personnel under the following conditions: if the power cord or plug is damaged; if liquid has entered the product; if the product has been dropped or the case damaged; if the product does not operate normally or exhibits a distinct change in performance. Adjust only those controls that are covered by the Epson Stylus CX operating instructions.
- ❑ Do not put your hand inside the Epson Stylus CX or touch any cartridges during printing.
- ❑ Do not insert objects into the slots on the Epson Stylus CX.

When handling ink cartridges

- ❑ Keep ink cartridges out of the reach of children and do not drink the ink.
- ❑ Be careful when you handle used ink cartridges; there may be ink remaining around the ink supply port. If ink gets on your skin, wash it off with soap and water. If it gets in your eyes, flush them immediately with water. If you still have discomfort or vision problems, see a doctor immediately.
- ❑ Do not shake the ink cartridge after removing from the package; this can cause leakage.
- ❑ Do not remove or tear the label on the cartridge; otherwise, ink will leak.