

ELEVATE YOUR BUSINESS WITH CUTTING-EDGE SOFTWARE SOLUTIONS.



Epson Solutions Suite provides a range of software, options and services to improve document security, manage device fleets, reduce costs, and simplify workflow processes.

Epson
Solutions Suite

EPSON SOLUTIONS SUITE INTRODUCTION AND SUPPORT LIST

Security

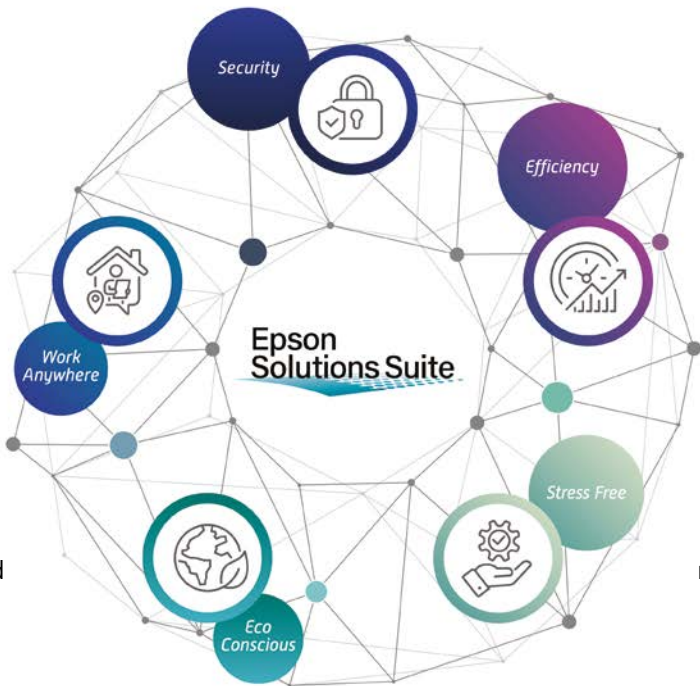
The security to run your business with peace of mind.

Freedom to work anywhere

Providing an environment that allows you to work from anywhere using IT, regardless of the location.

Eco conscious

Reducing environmental impact through the resource-saving and low power consumption of inkjet printers.



Work efficiency

Streamlining operations and improving work performance.

Stress-free operation

Increasing productivity by reducing the burden placed on the printing environment and ensuring stable operation of output devices.

Software Solution	EcoTank	WorkForce Pro	WorkForce Enterprise	Document Scanner ES-Series	Document Scanner DS-Series	Technical Printers
Epson Device Admin	●	●	●	●	●	●
Epson Remote Service	●	●	●			
Epson Print Admin	● ^{*1}	●	●			● ^{*8}
Epson Print Admin – Advanced Workflows	● ^{*1}	●	●			
Epson Print Admin Serverless		● ^{*2}	●			● ^{*8}
Printer Options			● ^{*3}			
Epson ScanSmart	●			●		
Document Capture Pro		●	●		●	● ^{*9}
Document Capture Pro – Enhanced OCR		●	●			
Document Capture Pro Server		●	●		●	
Serverless Authentication for Scanner					● ^{*6}	
Epson Connect	●	●	●	● ^{*4}	● ^{*6}	
Epson Smart Panel	●	●	●	● ^{*5}	● ^{*7}	● ^{*8}

^{*1} For L15180 and M15180 only.
^{*2} For WF-C879R only.
^{*3} For WorkForce Enterprise AM Series only.

^{*4} For ES-C380W and ES-580W.
^{*5} For ES-320W, ES-C380W and ES-580W only.
^{*6} For DS-790WN only.

^{*7} For DS-570WII and DS-790WN only.
^{*8} For SC-Tx730 Series only.
^{*9} For SC-T5730DM and SC-T7730DM.

FLEET MANAGEMENT SOLUTIONS

Epson Device Admin

Setup, manage and deploy a fleet of Epson devices remotely with a single application. Ensure maximum uptime, productivity and cost savings with automatic alerts and reporting capabilities.

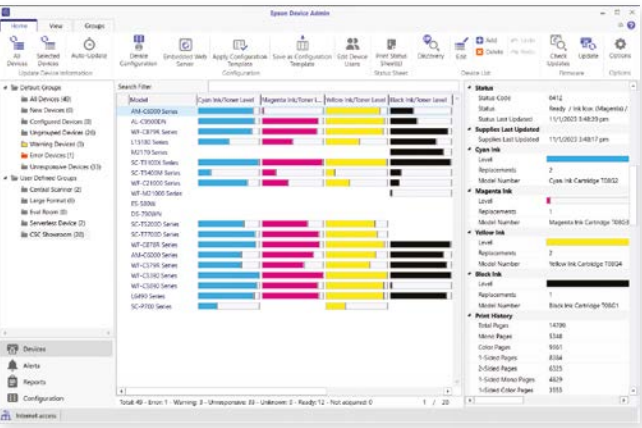


Simplify Deployment

Search and discover devices in the network. Setup and deploy a fleet of Epson devices with batch configuration.

Easy Management

Monitor and view the status of multiple devices with a single interface. Manage devices in groups, making it easy to trace and locate them especially for large installations.



Compatibility with a Wide Range of Products

Compatible with a wide range of products including printers and scanners by network connection or local devices connected via USB to PCs in the network.

Keeping up to date

Get notified when an update is available for a product. Conveniently schedule and push the firmware update to multiple products at the same time.

Improved Uptime

Receive alerts automatically via email notifications when the device faces a warning or error. It provides accurate information of the issue, reducing the time needed for troubleshooting.

Cost savings and Accountability

Generate highly customisable reports to account for usage on each device for cost saving activities. Implement Managed Print Services with scheduled reports.



^{*}Networked business inkjet printers, laser printers / MFPs, business scanners and large format printers.

FLEET MANAGEMENT SOLUTIONS

Epson Remote Services (ERS)

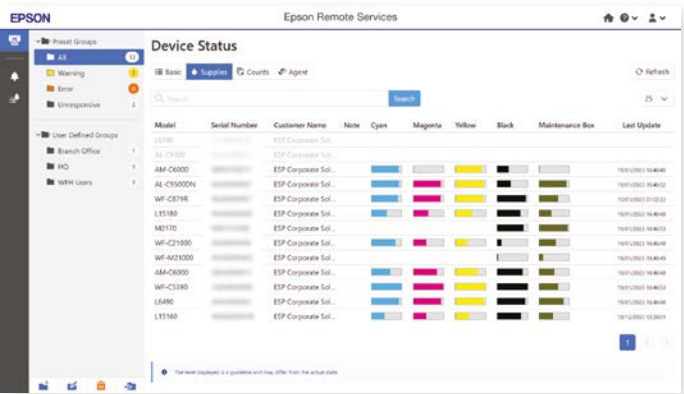
Monitor and manage your devices from location through the internet with a cloud-based system. Run billing programmes and provide accurate support by checking the current status of the devices installed in your customer’s premises.



Cloud-based Fleet Management

Access Epson Remote Services from anywhere in the world through Internet connection using a web browser on PC or mobile devices.

Monitor the status of devices and the consumables at a glance. Manage devices in groups for easy asset tracking.



Advanced Reporting Features

Generate various reports for click-charge billing without the need to head down to the site. Customers themselves may use the report for cost saving activities.

D	F	G	H	I	J	K	L	M	N	O	P	Q
Model	Number of Total Num	Total Num	Total Num	Total Num	Total Num	Total Num	Total Num	Total Num	Total Num	Total Num	Total Num	Total Num
WF-C2100 Normal	47803	27856	19947	46	79	52	492	22465	14230	5280	5128	
WF-M210K Normal	17581	17581	0	40	559			14395		2519		
L15180	590	74	516	0	26	0	0	67	126	7	364	
AL-C5500K Normal	32288	29032	3256	0	0	0	0	28894	2774	136	482	
WF-C879R	6983	214	4769	6	16	0	0	170	481	38	4221	
L15160	249	69	180	2	1	0	6	49	104	18	61	
L6490		103	39	64	0	0	0	0	29	43	10	20

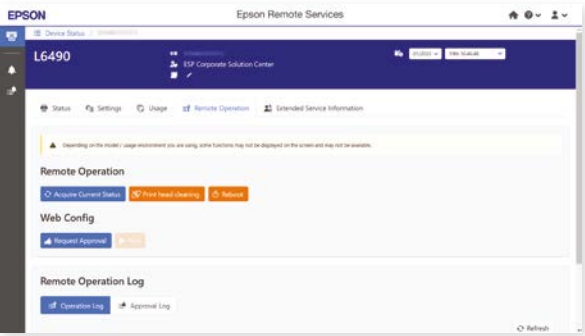
Improved Uptime

Set automatic alerts for notifications by email when the consumables run out or devices face an issue. Up-to-date information about the case is included for effective support.



Efficient Service Support

Reduce time spent on troubleshooting and resolve issues on the first visit by retrieving the latest and most accurate information about the device from ERS. Users who do not have technical knowledge can be guided or have their issues fixed with the use of various remote operation tools.



PRINT MANAGEMENT SOLUTIONS

Epson Print Admin

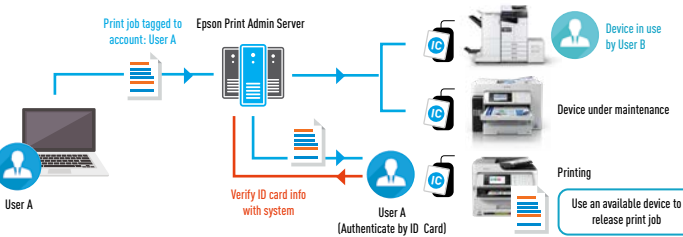
Manage print jobs and control usage of Multifunction Printers (MFPs) in your organisation. Secure the use of MFP functions through authentication preventing unauthorised usage. Release print jobs and distribute documents automatically based on the user’s account information.



Enhance Security and Reduce Waste

Improve security by preventing unauthorised use of devices with authentication function. Supports a variety of products with a single server. Authenticate users with User ID/ Password, ID cards and ID numbers.

Prevent leakage of confidential documents due to unattended documents and wastage of unnecessary prints left on the device by releasing print jobs upon authentication.



Integrate with Existing Infrastructure

Sync with directory services to import the user database and integrate with SMTP mail for document distribution, notifications and reporting functions.

Improved Convenience

Release print jobs on any available printer closest to you with no limitations. Automatically distribute documents and log in using your User ID with ‘Scan to Me,’ preventing mistakes when entering the recipient’s email address.

Keep workflow simple and secure by assigning only the required functions for each user or group.



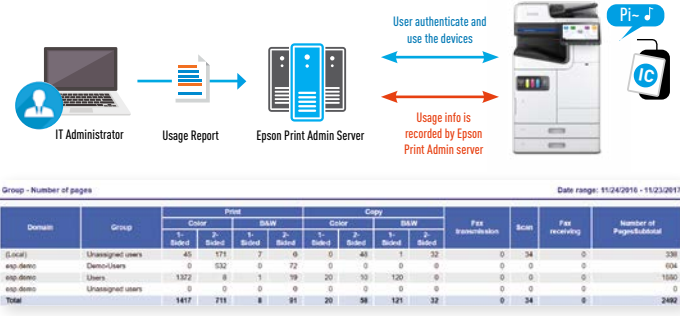
Web-based Management Console

Access and manage the server from a web browser in the network.



Cost Management and Accountability

Set rules and policies to save cost on printing. Credits and printing quotas can be set to reduce unnecessary printing. Generate various reports for accountability and improve efficiency. History reports are available for document tracing and auditing purposes.



Advanced Workflows*

Expand the capabilities of document distribution with Epson Print Admin Advanced Workflows. Apply advanced scan settings to “Scan to” functions and create searchable PDF files with built-in OCR capability.

Improve job efficiency by sorting documents from a batch automatically by various detection methods. Easily locate and track scanned documents with indexing. Print and scan directly on the device panel with connection to enterprise cloud storage services.

*Epson Print Admin Advanced Workflows is a paid add on feature.

Epson Print Admin Serverless

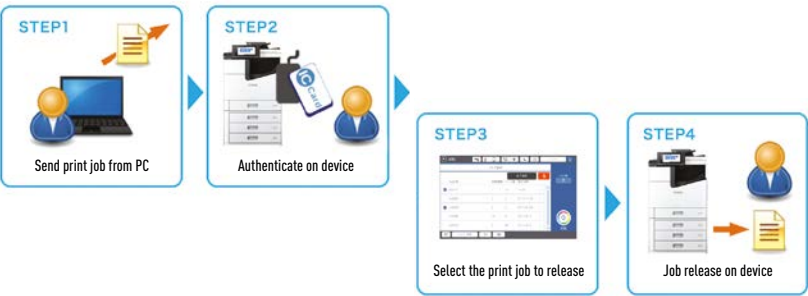
Create a secure printing and scanning environment without the need to install a server. Improve security through user authentication and conveniently distribute documents by email or to folders based on the user's accounts. Manage printing cost by setting printing quotas, generate reports for accounting and document tracing.



Enhanced Security and Reduce Waste

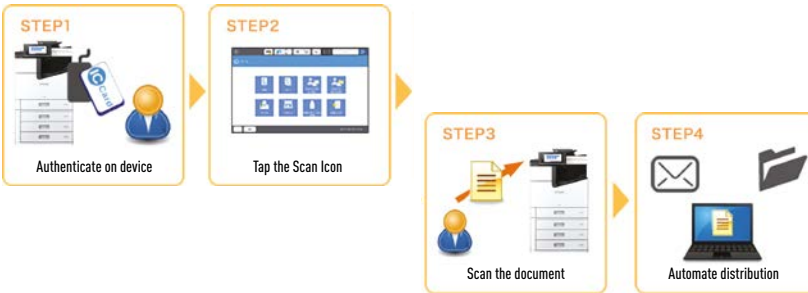
Improve security by preventing unauthorised use of devices with authentication function. Authenticate users with User ID/Password, ID cards and ID numbers supporting up to 1,000 users in the local database without the need for a server.

Prevent leakage of confidential documents due to unattended documents left on the device by releasing print jobs upon authentication. Waste is also reduced by reducing the amount of unnecessary printing.



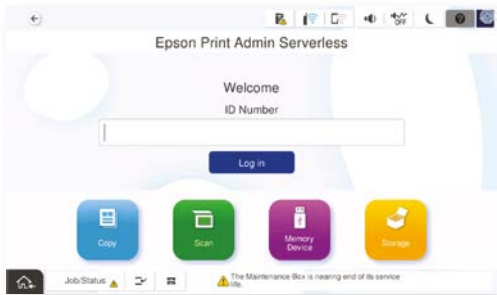
Improved Convenience

Release print job from a printer closest to you, supporting up to 5 devices in a group. Use "Scan to Me" functions to distribute documents automatically based on the logged in User ID and prevent mistakes when entering the recipient's email address.



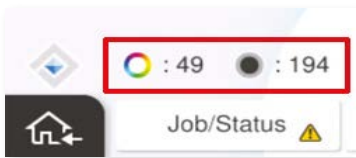
Share the use of Common Tasks

Selected functions can be allowed to be used on the device panel without the need to authenticate.



Cost Savings and Accountability

Set usage restrictions and printing quota for each user to manage printing costs. Generate usage reports for users or departments and job logs for accountability.



Convenient Device Management

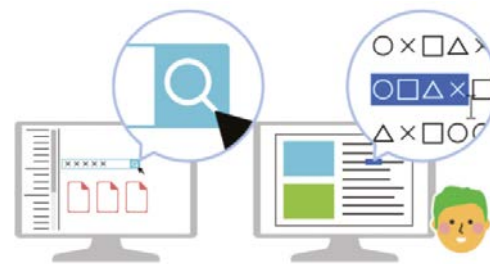
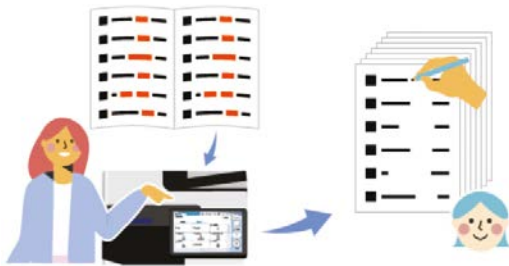
Manage a printer through a web browser or in batches with Epson Device Admin. Manage user accounts in the local database or import users from LDAP server.

Printer Options

Expand the capability of multifunction devices to suit your business operations by activating additional features for use right on the device without the need to install additional software.

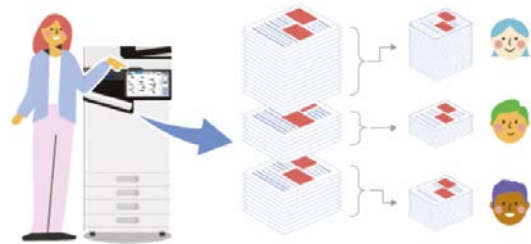
Erase Red Colour

Removes red coloured objects in the scanned image or copy.



Print Sets

Print or copy documents of various quantities for distribution to different groups and number of members.



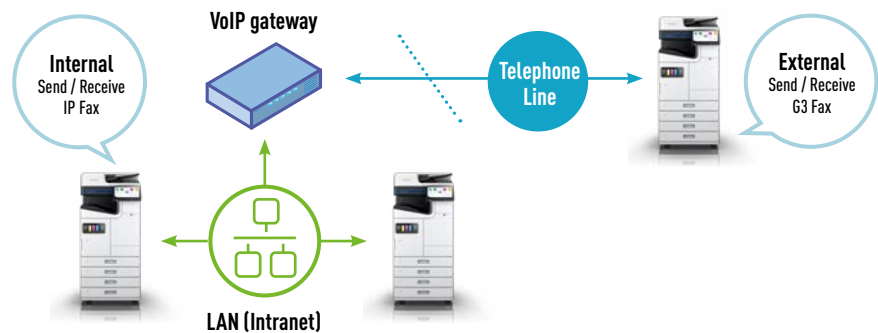
OCR Option

Enable built-in OCR functionality directly on the device for Scan to Folder and Email without the need to install software. This function also requires the OCR Unit-P1 option.

IP-Fax

Enables sending and receiving fax through IP address.

This option also requires at least 1 Super G3/G3 Multi Fax Board option installed.



DOCUMENT CAPTURE AND WORKFLOW SOLUTIONS

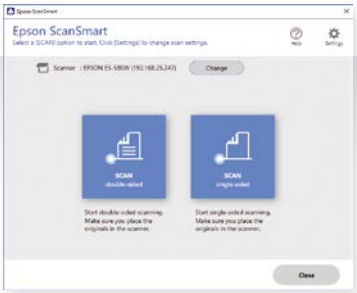
Epson ScanSmart

Convert documents to digital formats simply with “Scan and Save” function. Send documents to the cloud for convenient collaboration and export files to editable formats with built-in OCR functionality.



Simple User Interface

Large buttons makes it simple and easy for operation. Preset your scan settings and continue to use it with these buttons.



Simple Operation

Review, rearrange and rotate pages right after scanning and export it to a file.



Automatic Image Processing

Automatically remove blank pages and orientate documents based on text characters.

Versatile Output Capability

Attach scanned images to email clients or send the files directly to popular cloud storage services.

*PPTX output is not supported in the Mac version.

DOCUMENT CAPTURE AND WORKFLOW SOLUTIONS

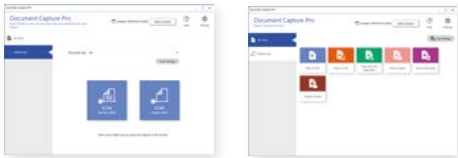
Document Capture Pro

Simplify your scanning workflow and automate your scanning tasks for processing or send documents to cloud storage services with Document Capture Pro. Convert documents into Searchable PDF files or editable Office documents with built-in OCR capability.



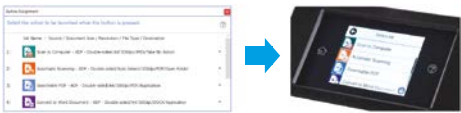
Scan and Save documents with a simple interface

Easily perform scanning tasks with large buttons with less operation steps.



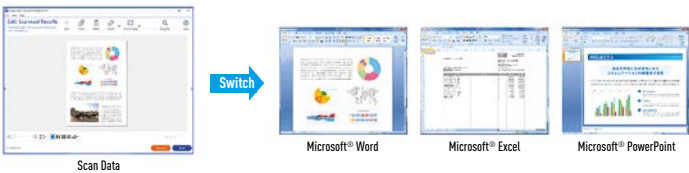
Simply Scanning Tasks

Create up to 30 highly customisable scan jobs to automate your scan processes and assign them right to the device panel.



Built-in Character Recognition

Create searchable PDF files to search for documents or keywords within. Save documents into editable formats such as DOCx, XLSX and PPTX*.



Wide Variety of Output Options

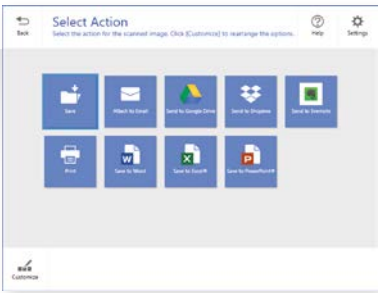
Export your documents to a variety of destinations. Save them to folders, send directly through email or popular online storage services. Images can also be forwarded to a printer to make a copy.



*PPTX output is not supported in the Mac version. ^Document Capture Pro Enhanced OCR is available as a paid solution for Business Inkjet products. It is available for document scanners as a standard.

Built-in Character Recognition

Create searchable PDF with built-in Optical Character Recognition capability which allows users to locate their documents easily by searching for keywords. Export documents to editable formats such as DOCX, XLSX and PPTX*.



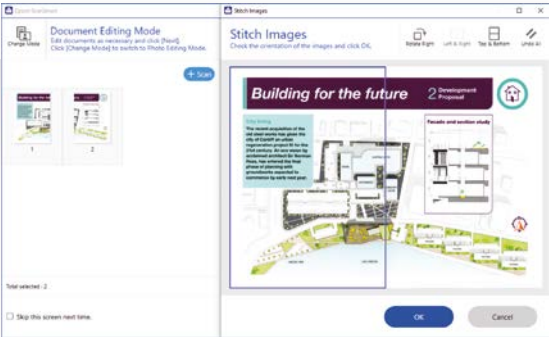
Automatic File and Folder Naming

Automatically detect keywords like “Invoice”, “Bill”, “Contract” or add up to 64 customisable words to name files or folder selection.

Stitch Image

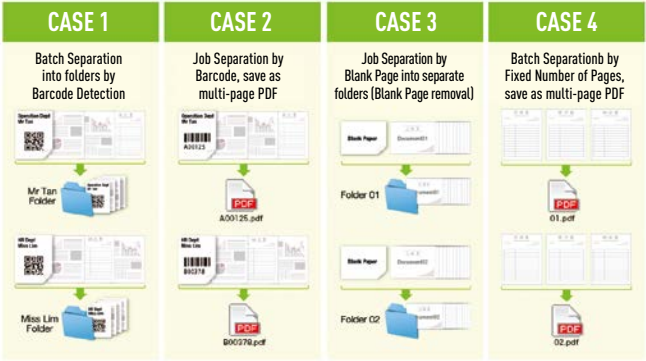
Available for selected MFP models only

Stitch images together when scanning a document larger than the document glass.



Document Distribution with Job Separation

Sort and distribute documents efficiently by automatically detecting text characters, barcodes, patch codes, blank pages and form types. Split files automatically by fixing the page and file size limit.



Advanced Indexing and Data Capture

Create indexes to locate documents. Capture text and barcode information from fixed zones of documents including the MRZ of travel documents and export it for processing.

Security and Accountability

Prevent unauthorised usage by securing scanning equipment with a password. Trace documents with the use of logging functions.

Enhanced OCR functions^

Further improve OCR accuracy and support additional languages with Kofax OCR engine. Capture data from documents with “User-defined indexing” function.

Available for Mac users

Simplify scan process with easy scan & save operations and create searchable PDF files.

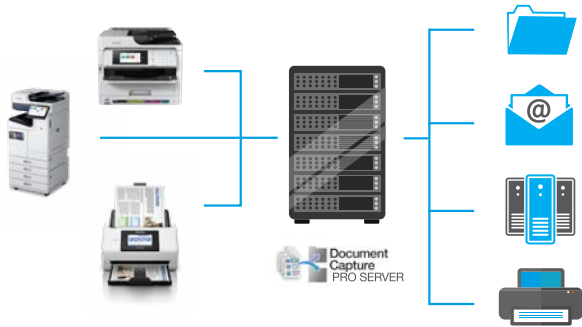
Document Capture Pro Server

Centralise your scanning tasks and manage your fleet of scanning equipment with a web browser without the need to install drivers on each computer. Locate documents easily and improve document security by index logs.



Manage and Centralise Scanning Equipment in the Network

Manage and control up to 1,000 scanning devices in the network with a web browser allowing up to 40 devices for concurrent usage.



- Automate Processes**
Manage and centralise scanning by creating and assigning up to 30 customisable job settings to the device panel for walk-up operation. Process documents automatically with features like automatic orientation and sorting using various methods.
- Advanced PDF Features**
Create searchable PDF files with built-in Optical Character Recognition (OCR) capability to easily locate documents by keywords and secure documents with passwords to prevent unauthorised distribution and duplication.
- Advanced Indexing**
Create customisable index files with the use of file information to easily trace and locate documents.
- Improved Security**
Secure scanning devices with a password to prevent unauthorised usage and track documents with log reports.

Document Capture Pro Server – Authentication Edition*

Further improve document security with Authentication function for supported models and advanced reporting features.

- Prevent Unauthorised Usage**
Authenticate users based on a user database by User ID/Password, ID Card or ID Number. Supports various ID card readers.



- Integration with Existing Infrastructure**
Sync with directory services to import the user database and integrate with SMTP email services for document delivery, alerts and reporting functions.
- “Scan and Send to me” Function**
Improve convenience and prevent leakage of confidential information by distributing documents based on the user’s account designated Email address and folders.
- Accountability**
Generate detailed usage reports for each user, device or job for accountability. Generate job logs for document tracing.

* Available with premium upgrade.

Serverless Authentication For Scanner

Secure the scanner with built-in authentication function to prevent unauthorised usage of the device without additional software. Improve document security and distribute documents automatically based on each user’s account information.



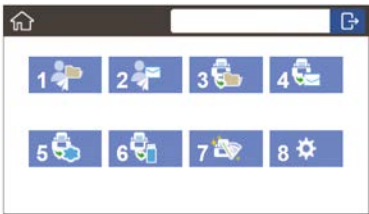
Enhance Document Security by Authentication Function

Secure the scanner to prevent unauthorised usage with user ID and card readers. Automatically route documents based on log in user ID with “Scan to Me functions”.



- Improve Convenience**
Improve convenience by starting the scan job automatically upon authentication with auto scan feature. It helps to create a clean and safe environment by minimising the touch points.

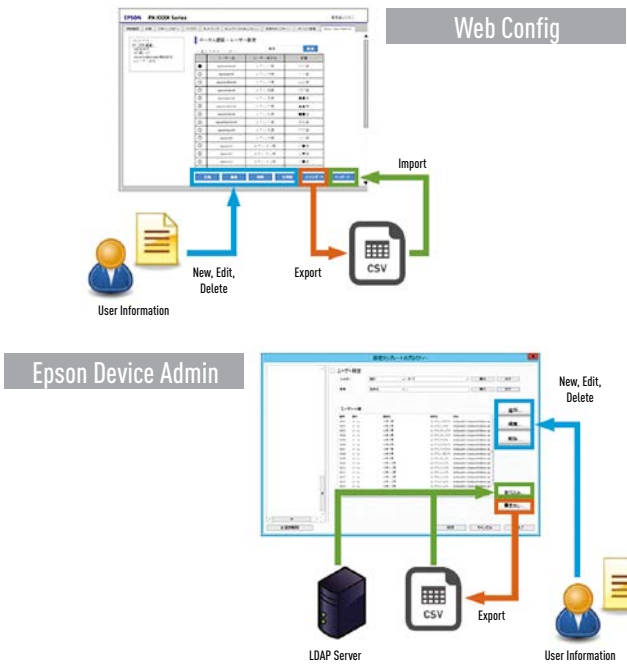
- Simplify Workflow and Automatic Routing**
Customise the layout of One-touch Functions to display on the device and assign pre-sets to each user for easy operation.



*Epson Device Admin is required for making reports.

Administer and Manage Accounts

Manage up to 50 user accounts locally on the device database or unlimited with LDAP server.



- Document Tracing and Accountability**
Locate documents easily with job logs to account for usage by user ID level with reporting function.



CLOUD PRINTING AND SCANNING SOLUTIONS

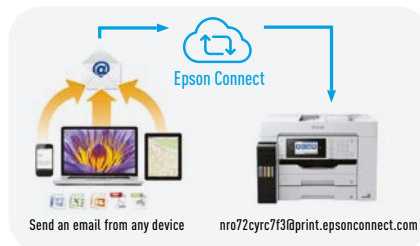
Epson Connect

Epson Connect is a cloud solution that allows users to print and scan from anywhere in the world with any device.



Epson Email Print

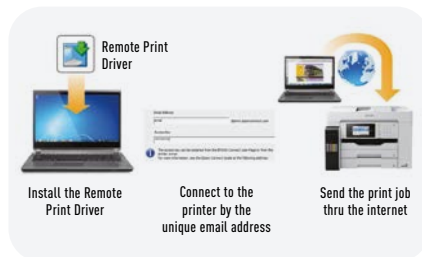
Print to any Epson Email Print enabled printer from any device that can send email, such as your smartphone, tablet or computer.



- Assign a unique email address to the printer.
- Prints the email body and/or attached files.
- Supports DOCX, XLSX, PPTX, PDF, JPG, GIF, TIF, BMP and PNG files.
- Secure the printer with an "Approved Senders List".
- Receive automatic notifications about the printing status.
- Track usage with job logs.

Remote Print Driver

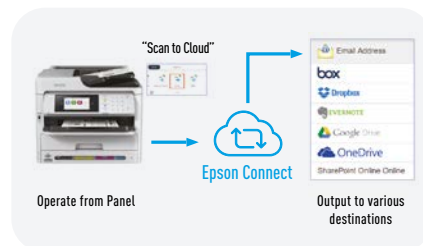
Enable printing through internet connection from your computer and mobile devices. It's as simple as clicking on File/Print to send your file to a remote print enabled Epson printer from anywhere in the world.



- Supports printing with advanced printer settings directly from a PC application.
- Print from anywhere in the world with "Print from Anywhere" function in Epson Smart Panel.
- Protect the printer from unauthorised usage by setting up an access key.

Scan to Cloud

Scan and send images to a recipient via email or save directly to popular cloud storage services.



- Easy operation from the device panel.
- Allows scanning directly to an email destination without an email server.
- Supports popular cloud storage services: Box, Dropbox, Evernote, Google Drive, Microsoft OneDrive* and SharePoint Online.
- Use Scan to Cloud to send documents to another Epson Connect enabled printer to simulate a fax environment.
- Track scanned documents with Scan Log.
- Supports a wide range of MFP and business scanners.

Epson Bridge for Universal Print for Home

Enable printing to an Epson Connect supported printer while connected to the company's VPN connection while working from home.



- Register and utilise any Epson Connect supported printer with Microsoft's Universal Print service.
- Deploy printer drivers without impacting the security of the company's computer equipment.
- Enhance document security with encryption by using Microsoft Universal Print.
- Monitor and trace document leaks from staff who prints documents on personal printers when working from home.

MOBILE PRINTING AND SCANNING SOLUTIONS

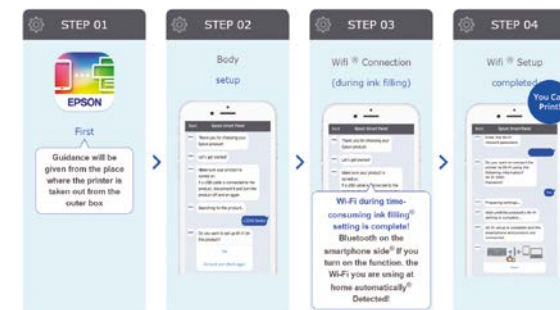
Epson Smart Panel Mobile App

Setup and control your printer or scanner from smart phones and tablets so you can print, copy, scan, and troubleshoot directly through the app.



Easy Wi-Fi Setup

Provide new users with an easy step-by-step guide in a chat format to setup their product.



Contactless Operation

Print and scan directly from your mobile devices. Use advanced features for copy on devices without LCD panel and print through the internet connection with Print from Anywhere.



Support a Wide Range of Products

Control your inkjet printer, multifunction printers, scanners and large format printers with a single app.



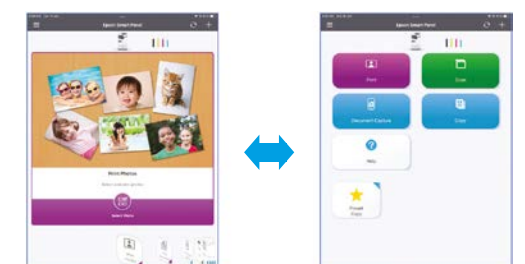
Scan and share documents

Scan documents with advanced settings or capture documents with the camera of mobile device and share it through installed apps.



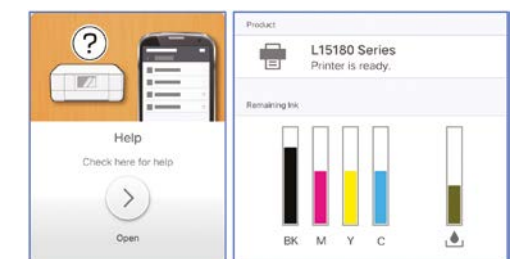
Customisable UI

Switch between Card UI or Tile UI, rearrange and hide unnecessary functions for convenient usage.



Easy Troubleshooting

Monitor the status and easy access to manuals and guides to help troubleshoot problems arising with the product.



Epson Open Platform

Epson Open Platform provides an interface between an Epson Device and applications allowing the users to experience seamless access to workflow solutions. Software vendors can use Open Platform API to embed their solutions onto the panels of Epson Devices to expand the compatibility of their solutions.

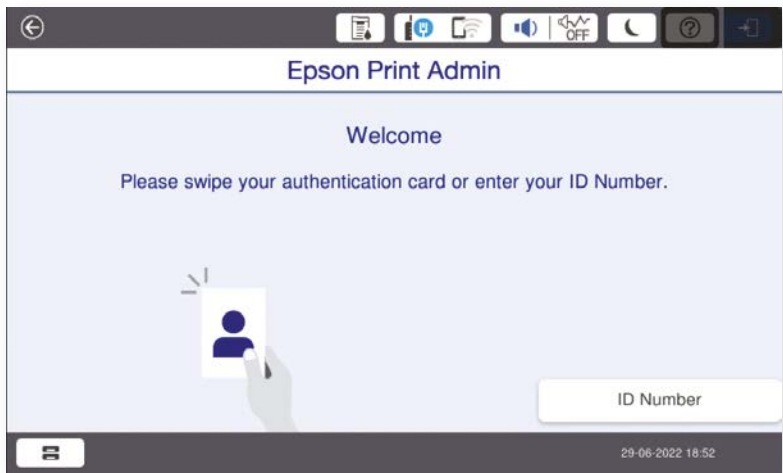


Scanner Software Development Kit

Epson offers an Application Programming Interface (API) that enables integration of Epson scanners into customised applications, mobile apps, solutions and connectors to additional cloud services. Epson partners can develop their solutions with concepts and manuals to assist them. To aid partners in developing solutions for their customers, Epson provides SDK in several packages with sample codes to meet their requirements.

Print Management with Epson Print Admin

Enhance security by managing print jobs and distribute documents securely with Epson Print Admin solutions via the Epson Open Platform interface. Epson Print Admin is available as a solution for Epson Open Platform.



Compatible with Third-party Software Solutions

Epson Open Platform is compatible with a range of thirdparty software solutions for print management and document processing. New customers with specific requirements or existing customers of solutions can now consider to include Epson devices into their workflow.

Support for ID Card Readers

Epson Open Platform supports a range of ID card readers to authenticate users.



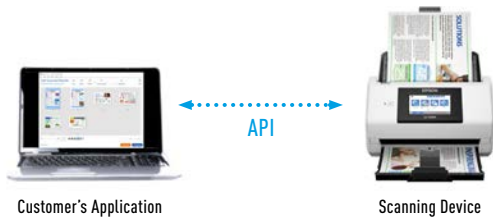
Developing with Epson Open Platform

Software vendors can develop their solutions with Epson Open Platform API using HTML, CSS and JavaScript to integrate Epson devices into their software solutions. On-premise and cloud solutions are supported. Please contact Epson if you want to integrate Epson products into your solutions with Epson Open Platform.



For PC Applications

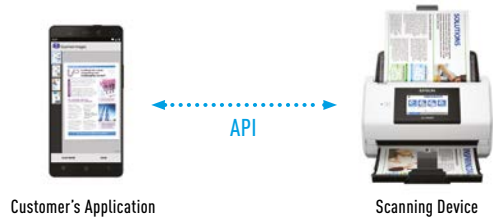
SDK packages for integrating Epson scanning devices to PC applications.



- Capture images directly from a customised app using TWAIN API.
- Integrate with Epson Scan SDK to control the scan settings of an Epson Scanner directly within an application.
- Extract text characters and barcode data from specified areas of documents for data input, file / folder naming or use as job separator.
- Scanner libraries are available in C++, C#, Visual Basic, JavaScript, and Java programming language.
- Includes web extension to support integration with web application with JavaScript.
- Support Windows and Linux applications.

For Mobile Applications

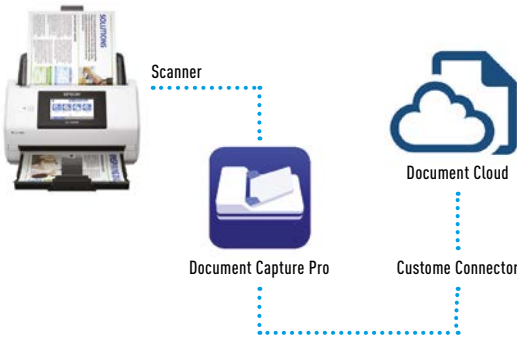
SDK packages for integrating Epson scanning devices to mobile applications.



- Use embedded scanner library in Java and Swift to integrate scanner functions into a mobile app running on Android, iOS, and iPadOS.
- Import images to an application by scanning and returning the images through Epson DocumentScan mobile app in Android and iOS environments.

For Integrating with Document Capture Pro solutions

For simplifying deployment, running jobs in Document Capture Pro from an application and create customised output destinations for output in Document Capture Pro.



- Simplify deployment of customised job settings by repackaging preset jobs into the installer.
- Run a pre-set job setting in Document Capture Pro using command line.
- API to develop connectors to send images from Document Capture Pro or Document Capture Pro Server to a cloud storage folder.

FLEET
MANAGEMENT
SOLUTIONS

Epson
Device Admin



Epson
Remote Services



FLEET
MANAGEMENT
SOLUTIONS

Epson
Print Admin



Epson
Print Admin Serverless



Service Type	On-premise	Cloud Service
Web-based Management	No	Yes
Automatic Device Discovery	Yes	Yes, when using the PC agent
Device Grouping	Yes	Yes
Display Consumable Levels	Yes	Yes
Alert Function	Yes, by SMTP	Yes, by Cloud Service
Reporting Function	Device usage, Hourly Peak Usage, Supplies Usage, Accessories Inventory	Print Volume, Consumables Usage
Remote Configuration	Yes	Yes
Batch Configuration	Yes	No
Remote Operation	No	Yes
Firmware Update Function	Yes	Yes
Password Management	Yes	No
Customer Management	No	Yes
Support USB Devices	Yes, requires Epson Device USB agent installed in the PC connected to the device.	Yes, requires Epson Device USB agent installed in the PC connected to the device.
Support Embedded Status Agent	No	Yes
Support 3 rd Party Devices	Yes	Yes
Supported OS	<p>Epson Device Admin Software: Windows XP, Vista, 7, 8, 8.1, 10, 11 Windows Server 2003, 2008, 2012, 2016, 2019, 2022</p> <p>Epson Device USB Agent: Windows 7, 8, 8.1, 10, 11 Windows Server 2008, 2012, 2016, 2019, 2022</p>	<p>Epson DC Agent: Windows 10, 11 Windows Server 2016, 2019, 2022</p> <p>Epson Device USB Agent: Windows 7, 8, 8.1, 10, 11 Windows Server 2008, 2012, 2016, 2019, 2022</p>

License Model	Per device	Per device
Authentication Function	User ID / Password, ID Card, ID Number	User ID / Password, ID Card, ID Number
User Database	Local database: Unlimited LDAP: Unlimited	Local database: 1,000 User ID LDAP: Unlimited
Support LDAP	Microsoft Active Directory, OpenLDAP, Microsoft Entra ID, Google Cloud Directory	Microsoft Active Directory, OpenLDAP
Follow Me Print	Yes, no limit	Yes, up to 5 devices in a group
Printing Rules and Policies	Yes	No
Cost Settings and Credit Options	Yes	No
Page Quota	Yes	Yes
Scan to Email Function	SMTP	SMTP
Scan to My Email / Folder	Yes	Yes
Cloud Print	Yes: OneDrive for Business, SharePoint Online, Microsoft Teams	No
Scan to Cloud Storage	Yes: OneDrive for Business, SharePoint Online, Microsoft Teams, Google Drive	No
Built-in OCR*	Yes	No
Job Separation*	Blank Page, Patch Code, Barcode, OCR, Fixed Pages	No
Indexing*	Indexing	No
Reporting Function	User, Group, Device, Billing Code, History Report, Customised Report	User, Department, Job History
Output File Formats	PDF, Compact PDF, JPEG, TIFF, PNG, BMP	Device Dependant
Supported OS	<p>Epson Print Admin Server: Windows 10, 11 Pro* / Enterprise / Education Windows Server 2012, 2016, 2019, 2022 Essentials / Standard / Datacenter</p> <p>Client PC: Windows 7, 8.1, 10, 11 Windows Server 2008, 2012, 2016, 2019, 2022 Mac OS 10.8.5 or later Linux* ChromeOS*</p>	Device Dependant

Disclaimers:

- Built-in OCR, Job Separation and indexing functions for Epson Print Admin requires the purchase of Advanced Workflows add-on.
- Reporting function of Epson Print Admin Serverless requires the use of Epson Device Admin.
- When Epson Print Admin Server application is installed in Windows 10 / 11 OS, performance and connection is limited up to 10 connections.
- Epson Print Admin Advanced Workflows is not available if Epson Print Admin server application is installed in Windows 10 / 11 OS.
- For Linux clients, please confirm the compatibility of your environment during Proof Of Concept (POC).
- For ChromeOS clients, for compatibility, please update to keep the OS version up to date.

DOCUMENT CAPTURE
AND WORKFLOW
SOLUTIONS

Number of Job Settings	1	30	30
Number of Devices Connection	1	1	1,000
Number of Concurrent Devices	1	1	40
Built-in OCR	Yes	Yes	Yes
Cloud Storage Support	Google Drive, Dropbox, Evernote, Microsoft OneDrive	Google Drive, Evernote, SugarSync, OneNote, Dropbox, SharePoint Online, Microsoft OneDrive	No
Job Separation	Fixed Pages	Fixed Pages, Blank Page, Barcode, OCR, Form, File Size, Patch Code <small>(*Only support Fixed Pages for Mac version)</small>	Blank Page, Patch Code, Barcode, OCR, Fixed Pages
Indexing	No	Indexing, User-defined Indexing <small>(*Not supported for Mac version)</small>	Indexing
Reporting Function	No	No	User, Group, Scanner, Job Report, History Report
Automatic File Naming	Yes	Yes	No
Output File Formats	PDF, JPEG, TIFF, PNG, BMP, DOCX, XLSX, PPTX	JPEG, JPEG2000, BMP, PDF, TIFF, PNG, DOCX, XLSX, PPTX <small>(*Mac version supports JPEG, PDF, TIFF, PNG, DOCX, XLSX)</small>	JPEG, BMP, PNG, PDF, TIFF
Security	No	Password Protect	Password Protect
Supported OS	Windows 7, 8, 8.1, 10, 11 Mac OSX 10.11 or later	Windows 7, 8, 8.1, 10, 11 Mac OSX 10.11 or later	Windows Server 2012, 2016, 2019, 2022 Essentials / Standard / Datacenter

Disclaimers:

- Document Capture Pro Enhanced OCR option is required when connecting multi-function devices for user defined indexing function and improved OCR capabilities supporting Asian languages.

DOCUMENT CAPTURE
AND WORKFLOW
SOLUTIONS

Authentication Function	User ID / Password, ID Card, ID Number	User ID / Password, ID Card, ID Number
User Database	Local Database: Unlimited LDAP: Unlimited	Local Database: 50 User ID LDAP: Unlimited
Number of Job Settings	30	Device Department
Number of Devices Connection	1,000	1
Number of Concurrent Devices	40	1
Built-in OCR	Yes	No
Support LDAP	Yes	Yes
Scan to Email Function	SMTP	SMTP
Scan to My Email / Folder	Yes	Yes
Cloud Storage Support	No	No
Job Separation	Blank Page, Patch Code, Barcode, OCR, Fixed Pages	No
Indexing	Indexing	No
Report Function	User, Group, Scanner, Job Report, History Report	Job History
Automatic File Naming	No	No
Output File Formats	JPEG, BMP, PNG, PDF, TIFF	Device Dependant
Security	Password Protect, Authentication Function <small>(*For supporte models only)</small>	Authentication Function
Supported OS	Windows Server 2012, 2016, 2019, 2022	Driverless

Disclaimers:

- Reporting function of Serverless Authentication for Scanners requires the use of Epson Device Admin.

EPSON