

# PRECISION AND PERFORMANCE IN EVERY DIVERSE PRINT.



## Impeccable print quality and spectacular accuracy with Epson's large format printers.

Epson's new SureColor large format printers are the next generation of high-performance signage printers, built with the latest printing technology. They feature an advanced precision media feeding system, high-performance printheads, and a range of advanced capabilities designed to handle demanding jobs reliably while keeping operational cost low.

## ENGINEERED FOR good



Epson Edge Print PRO



### Exceptional Print Quality

Explore enhanced printing speeds with the latest Epson technology, thanks to an improved printhead width and increased nozzle count.

### Super Reliability

High-volume printing is made ultra-reliable with an advanced precision media feeding system\* to ensure minimal downtime.

### Engineered For Convenience

Epson's solutions such as Epson Cloud Solution PORT and Epson Edge Print PRO helps with ease of use and remote management during operations.

\*The advanced precision media feeding system is available on selected models only.



# INK AND PRINthead TECHNOLOGY



# EPSON TOTAL SOLUTION



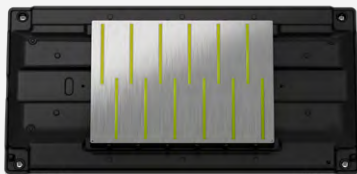
Epson Cloud Solution  
**PORT**

## BRILLIANCE IN RELIABILITY

Leading the next generation of high-performance signage printers, the Epson SureColor printers are engineered with advanced functions and the latest printing technologies. With printheads tailor-made to cater to each ink type, the SureColor printers produce impeccable text and image sharpness across a wide range of ink and media with micron-level precision and reliability.

### Upgraded Printhead

The upgraded printhead features an increased size to accommodate a total of 9,600 nozzles\*, significantly more than the previous version. This larger configuration is specifically designed to boost productivity by enabling faster print speeds.



SC-S9130



SC-S80670

### Superior Ink Technology

Advanced ink technology from Epson brings a wide gamut of colours that comes with high image quality. The inks are optimised to perform high quality images and reduce machine downtime.

#### Eco-Solvent Printing

Using Epson UltraChrome GS3 eco-solvent ink – including an all-new Green ink along with the option for White ink\* – for outstanding photographic print quality, durability, and media compatibility.

#### Resin Printing

Epson's UltraChrome RS Ink offers wide substrate support. The odourless water-based ink enables the use of printed applications in sensitive environments.

#### UV Ink

Vibrant 10-colour\* UltraChrome UV ink, including dedicated red and grey inks, ensures smooth gradation and natural grey effects. The availability of varnish ink creates a visual and tactile experience.



\*For selected models only.

## CONNECT. OPTIMISE. GROW

At Epson, we understand that having real-time information at your fingertips is vital to your daily operations. This is why we have introduced the Epson Cloud Solution PORT, an intuitive cloud-based remote monitoring software. Monitor and manage your fleet of printers effectively across multiple sites, or a single site. Epson Cloud Solution PORT can be accessed from multiple devices including PCs, smartphones and tablets.

### Fleetwide Printer Management

When managing printer efficiency and usage, intelligent and intuitive production monitoring is essential for maximising productivity, connectivity, and growth. A clear and simple dashboard, drawing from vast amounts of usage data, provides the insight needed to make critical business decisions.

### Remote Monitoring System

Designed with simplicity and security in mind, the Epson Cloud Solution PORT provides a live view of your printer fleet production, equipment utilisation, and service information to better manage efficiency and optimise your Epson printing workflow.



#### Remote Monitoring<sup>1</sup>

View live status of the entire printer fleet, output production rates, printer status, errors, and equipment utilisation.



#### Secure & Encrypted

Data stream and cloud are encrypted end-to-end to protect customers' privacy and usage data.



#### Production Efficiency Tracking & Reporting

Run reports to view total production efficiency, uptime, printer usage, and associated costs.



#### Mobile Access, No App Needed!

Optimised mobile website allows for easy, remote tracking of printer fleet while on the go.



#### Dashboard Tracking

Create in-shop dashboard to internally communicate key performance metrics to employees.



#### Expedited Service Response

Epson support helps reduce downtime with fast, remote troubleshooting.

<sup>1</sup> All features of this system require an active internet connection and use of a supported browser.



# PRINT APPLICATIONS FOR DIFFERENT SCENARIOS

Versatility meets convenience, fulfilling your different printing needs effortlessly.

## ECO-SOLVENT

The eco-solvent inks are generally more suitable for general printing of indoor signages (i.e. on PVC material), offering a wide colour gamut and competitive cost per print.



Retail Signage



Event & Exhibition



Backlit



Window Graphic



Product Display

## RESIN

The resin inks are recommended for unique printing applications. Because of 'instant lamination' and higher scratch durability finishing, the inks are more suitable for applications requiring such features.



Outdoor Signage



Vehicle Wrap



Wallpaper



Canvas



Textile

## UV

UV printing uses a unique drying method compared to the traditional inks where instead of evaporation, they are cured using high-intensity UV lights. This allows operators to use UV printing on virtually any substrate, catering to a wider range of media.



Stainless Steel



Wall Display Tile



Acrylic Frame



Glass Facade



Wooden Panel





# ECO-SOLVENT PRINTER

## QUITE POSSIBLY THE BEST ECO-SOLVENT SIGNAGE PRINTERS EVER

Epson SureColor S-Series eco-solvent printers offer exceptional productivity, outstanding image quality, and iron-clad reliability.

With lightning-fast printing speeds and lamination capability, the SureColor S-Series printers empower you to turn around jobs fast. Additionally, the automated printer maintenance system lets you focus on printing, not on the printer.



SC-S7130

SC-S8130/SC-S9130

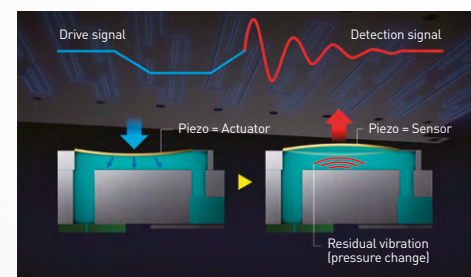
### Latest Generation of Printhead

Upgraded PrecisionCore MicroTFP Printhead for faster print speed and increased productivity across all print modes.

### Nozzle Verification Technology (NVT)

The Nozzle Verification Technology (NVT) automatically detects and compensates\* for clogged nozzles while also triggering alerts for cleaning or halting printing to maintain consistent print quality.

\*Automatic nozzle compensation is not supported on SC-S7130.



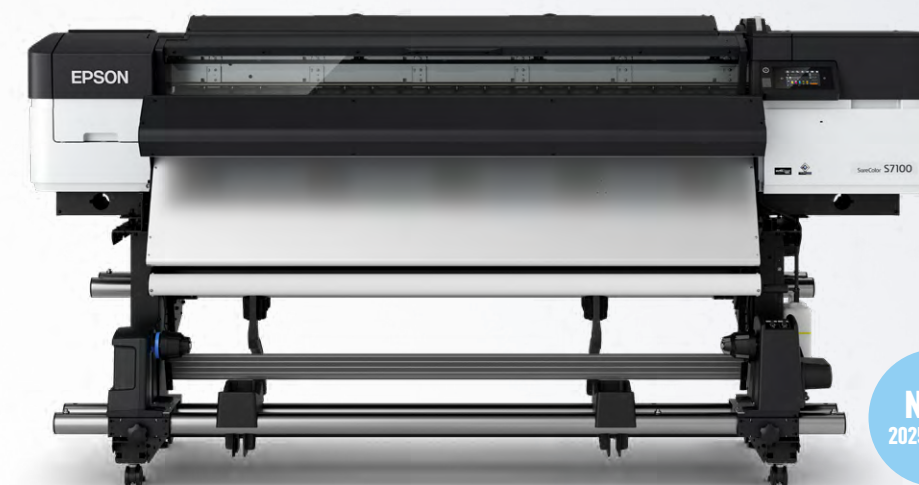
### GREENGUARD Gold Certified

With low emission and VOC, GS3 inks are safe for indoor use.

64"

GS3  
ULTRACHROME  
GS3 INK

C M Y K  
MAX. INK CAPACITY  
PER COLOUR  
800ml



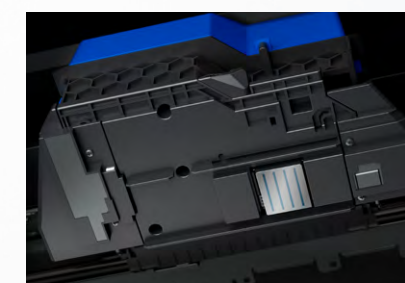
NEW  
2025 MODEL

- Exceptional print quality at affordable cost of ownership
- Proven reliability and stable performance
- Improved print speed of up to 70.9m<sup>2</sup> per hour



### Large Display Panel

The new tiltable 4.3" optical touch display panel offers a more intuitive user experience, allowing operation even with gloves on.



### Temperature Sensor

The new Carriage Temperature Sensor, placed closer to the nozzle, ensures faster detection of temperature changes for more consistent colour reproduction.



### Sharper Text

The new 'Text Sharpness' mode in Epson Edge Print PRO enhances fine text printing, delivering more precise and crisp text output.

Epson Edge Print PRO





# ECO-SOLVENT PRINTER

## REDUCE INK COSTS WITH BULK-INK EDITIONS

These printers break new ground in sign printing by drastically reducing ink costs. They offer fast print speeds, best-in-class high colour accuracy and lamination compatibility, along with the convenience and cost savings of bulk ink.

Innovative bulk-ink packs offer low ink cost, so you can print more at a lower ink cost per square foot. Plus, in addition to delivering longer, unattended printing, they reduce plastic waste compared to traditional cartridge systems.



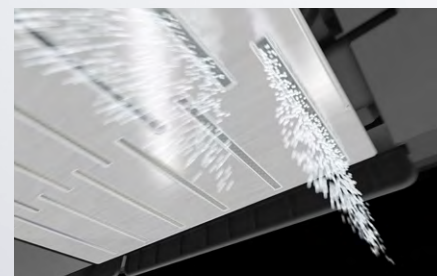
### Nozzle Temperature Sensor for Consistent Quality

A new temperature sensor near the ink discharge area ensures precise temperature control, maintaining consistent ink dispensing for improved colour accuracy from the first print to the last.

### Hot Swap Ink System to Keep Production Moving

Only for SC-S8130

Epson's advanced Hot Swap Ink System automatically switches to a backup ink pack the moment one runs out — with zero interruption to your print job. That means no halts, no manual refills mid-job, and no wasted time.



### Enhanced White Ink Output for Faster Results

Only for SC-S9130

The dual white ink channel enables higher white opacity output in less time, improving efficiency while maintaining vibrant, consistent results.

64"

GS3  
ULTRACHROME  
GS3 INK  
WITH LC, LM



MAX. INK CAPACITY  
PER COLOUR  
1500ml



6-Colour Bulk-Ink Sign Printer

SC-S8130

NEW  
2025 MODEL

- High productivity with superior stability and performance
- 6-colour ink set including Light Cyan and Light Magenta with Hot Swap feature for uninterrupted printing
- Faster print speed with up to 28% improvement\*

\*Based on default mode, 6 pass, 1200 x 600 dpi using adhesive vinyl comparing against the SC-S60670L.

64"

GS3  
ULTRACHROME  
GS3 INK  
WITH GREEN



MAX. INK CAPACITY  
PER COLOUR\*  
1500ml



11-Colour Bulk-Ink Sign Printer

SC-S9130

NEW  
2025 MODEL

- Faster print speed and higher productivity with the latest generation PrecisionCore MicroTFP Printhead
- 11-colour ink set with Orange, Red and all new Green
- Dual-sized ink pack option to suit different production needs

\*Cleaning Liquid is only available in 800ml pack.

### Effortless Media Handling

Bundled media lifter allows for easier loading of heavy media, reducing strains and bending posture to prevent injuries.



1,500ml  
Ink Packs



800ml  
Ink Packs

### Dual-Sized Ink Pack Option

Choose between 800ml or 1500ml packs to match production needs and minimise downtime.



# R

# RESIN PRINTER

## HIGHLY VERSATILE, HIGH-PERFORMANCE RESIN PRINTERS

Epson SureColor R-Series 64" roll-to-roll printers are the perfect choice for high-volume shops looking for a fast, versatile printing solution. Tackle any signage job with the multi-purpose resin ink that delivers outstanding, repeatable colour on a wide range of media, including wallpapers, uncoated papers, and more. Blistering print speed and immediate lamination boost productivity. Plus, economical bulk-ink packs offer increased convenience and reduce the total cost of ownership.

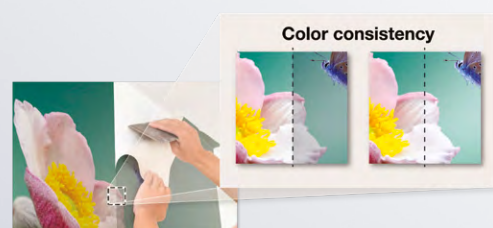


### Epson UltraChrome RS Resin Inks

Dries instantly for highly scratch-resistant prints that you can laminate immediately for faster turnaround.

### Instant Lamination

Achieve fuss-free instant lamination with our durable water-based inks.



### New Multi-Purpose Resin Ink

Delivers extremely accurate, reliably consistent, high-quality colour for repeat jobs, brand colours, wall tiling applications and more.

64"

RS3  
ULTRACHROME  
RS3 INK



MAX. INK CAPACITY  
PER COLOUR  
1500ml



Standard Resin Printer

SC-R5030

- Outstanding image quality and repeatable colour at production speeds
- Convenient, efficient 1500ml bulk-ink packs

64"

RS3  
ULTRACHROME  
RS3 INK



MAX. INK CAPACITY  
PER COLOUR  
3000ml  
(1500ml x 2)



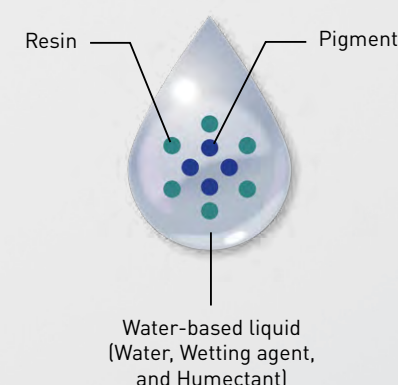
Supersized Bulk-Ink Resin Printer

SC-R5030L

- High-quality, colour-accurate output on a wide variety of media
- Cost-reducing 3000ml (1500ml x 2 packs) bulk-ink system
- Hot swap feature reduces printer down time

Q

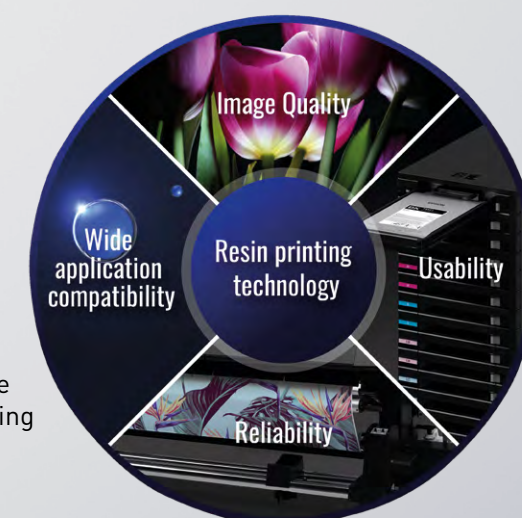
## What is Water-Based Resin?



Water-Based Resin Inks contain

- Water
- Resin
- Wetting Agent
- Humectant

The UltraChrome RS Ink forms a more uniform layer of ink on the print media, eliminating the existing challenge of diffused reflection from surfaces.







# UV DESKTOP PRINTER

## AMPLIFY CREATIVITY WITH CUSTOMISABLE NOVELTY GOODS

Designed for the competitive niche market of customisable products, the Epson SureColor V1030 is the perfect printer for businesses prioritising versatility and performance in their A4 desktop UV printing needs. The printer's extensive substrate compatibility, including wood and stainless steel, consistently delivers high-quality prints, providing new opportunities for businesses.



Note: Jigs are to be purchased separately.

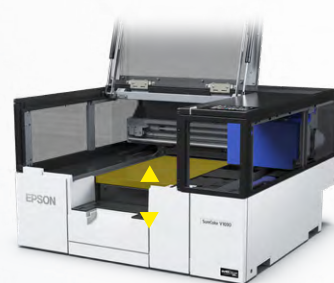
### Fine Print Quality

Achieve impeccable results with fine lines and sharp text on a wide range of compatible substrates. With Epson UltraChrome UV inks, users can expect vibrant outputs in every print.

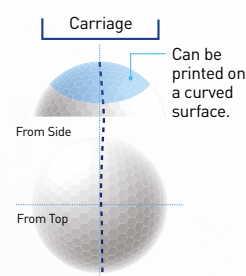


### Smart Operation

The Auto Height Adjustment feature automatically adapts to substrates up to **70mm thick**, while the Wide Gap function enhances clarity on three-dimensional items like golf balls, pens, and phone cases, ensuring optimal printing performance.



Auto Height Adjustment



Wide Gap Function



### Flexible Placement

With its compact design, the printer fits easily on desks or workbenches for easy job monitoring. The front operation streamlines maintenance and allows wire-free placement at the rear. Multiple units can be positioned side-by-side to maximise space.

A4

UV  
ULTRACHROME  
UV INK



MAX. INK CAPACITY  
PER COLOUR  
**140ml**

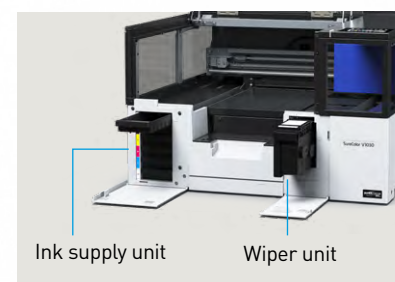


A4 Desktop UV Printer

SC-V1030

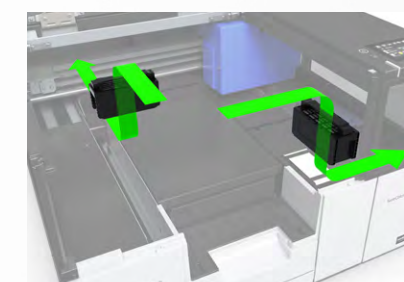
- High precision printing with crisp text and detailed images - perfect for small, customised products
- Compact front-loading design enables flexible placement in tight spaces
- Easy and safe maintenance with a no-ink-contact design – an automatic wiper unit that cleans and collect cured UV inks

## Easy Maintenance and Operation



### Safe Maintenance

Ink contact is minimised with an automatic wiper unit that cleans and collects cured UV inks.



### Internal Air Circulation

With two built-in air filters that reduces odour, the printer is safe for operation in a closed environment.



Air filter



### Large Display Panel

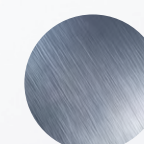
Effortlessly manage and oversee your print jobs, monitor ink levels, and perform printhead cleaning using the LED display panel. The panel also provides convenient visibility in low-light environments.

## Print on Variety of Substrates

Print directly onto a large variety of substrates including wood, stainless steel, acrylic, plastics, ceramic, and more. Businesses can provide high-value novelty goods that are unique and personalised, offering customised products that are not commonly found.



Wood



Stainless Steel



Acrylic



Plastics



Ceramic

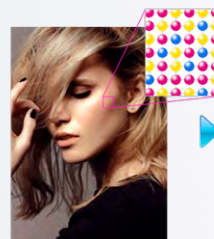




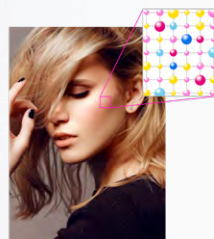
# UV FLATBED PRINTER

## PRODUCTION UV FLATBED PRINTER

With the ability to print directly on a wide variety of rigid substrates up to 80mm thick, the Epson SureColor V7000 flatbed printer offers a cost-effective solution for expanding your shop's capabilities. Featuring 10-colour UltraChrome UV Ink, including red and grey inks, it produces bright, colourful, tactile high-quality prints with smooth gradation and neutral greys in record time. Plus, the quick media loading and easy alignment, along with intuitive RIP software makes the SC-V7000 a breeze to use.



Other brands



Epson SC-V7000 with Variable Droplet

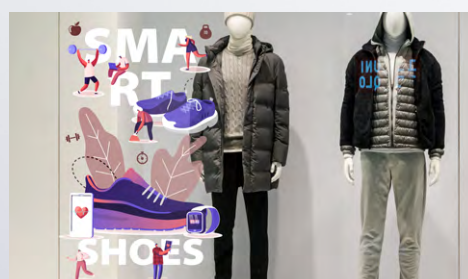
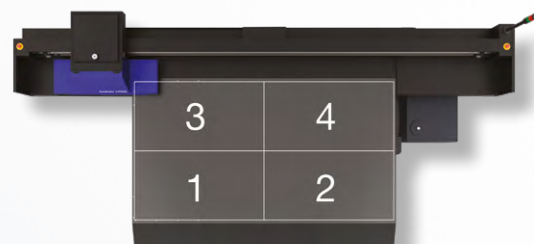
### Epson UltraChrome UV Inks

With up to 10-colour ink set that provide low graininess and banding, the UV flatbed printer provides highly vivid and consistent prints with its striking reds and stunning colours.



### Wide Media Usage

Automatic detection and adjustment to accommodate media of up to 80mm thick. The four zone vacuum can easily hold media in place securely.



### White Ink and Varnish

Producing rich, high-quality prints on a variety of materials, the white ink and varnish enable operators to print glossy finishes, various textures, and more.

2.50m  
by  
1.25m

UV  
ULTRACHROME  
UV INK



MAX. INK CAPACITY  
PER COLOUR  
1000ml



Flatbed UV Printer

SC-V7000

- Prints on media and rigid substrates up to 2.50m by 1.25m and 80mm thick
- Delivers outstanding quality prints at true production speed
- Includes Epson Edge Print PRO software

## Versatility Redefined

Epson's SC-V7000 reinvents what large format printers can offer, allowing businesses to print directly on a wide variety of substrates\* up to 80mm media thickness. This includes vinyl, textile, canvas, film, aluminium composite boards and styrofoam boards. The possibilities to create with the SC-V7000 are limitless!



\*Some materials will require pre-treatment. Contact Epson to find out more.



SURECOLOR  
SIGNAGE  
PRINTERS

ECO-SOLVENT  
PRINTING

MODEL NUMBER

PRINT Technology
Printhead
Maximum Resolution
Print Speed

INK Name
-------------

Colour
--------

Capacity
----------

Ink Type
----------

MEDIA HANDLING Paper Path
------------------------------

Maximum Roll Diameter/Weight
------------------------------

Maximum Reel Diameter/Weight
------------------------------

CONNECTIVITY Interface
---------------------------

Printer Language
------------------

Memory
--------

ENVIRONMENTAL CHARACTERISTICS Temperature
--

Humidity
----------

DIMENSIONS & WEIGHT Printer Dimension (W) (mm) - Max
---

Printer Dimension (D) (mm) - Max
----------------------------------

Printer Dimension (H) (mm) - Max
----------------------------------

Weight
--------

SYSTEM Win PC System Requirement
-------------------------------------



SC-S7130

PrecisionCore Inkjet, Variable-Sized Droplet Technology
PrecisionCore MicroTFP Printhead
1440 x 1440 dpi
4 Pass – Up to 18.5 m²/h (Banner 600 x 600 dpi) 6 Pass – Up to 13.0 m²/h (PVC, 600 x 1200 dpi) 16 Pass – Up to 4.5 m²/h (Film 1200 x 1200 dpi)
Epson UltraChrome GS3 Ink
Cyan, Magenta, Yellow, Black
800ml
Ink Pack
Friction Feed
Max. 250mm / 45kg
Max. 200mm
Hi-Speed USB 3.0, 100BASE-TX/10000BASE-T
ESC/P Raster
1GB
Operating: 15°C to 35°C (20°C to 32°C recommended)
Operating: 20 – 80% (40 to 60% recommended)
2620
880
1338
Approx. 278kg
OS: Win10x64 or higher Processor: Intel® Core™ i3 3.0 GHz or faster Memory: 8GB or more Storage: 500GB or more Display Resolution: 1280 x 1024 or higher

SURECOLOR  
SIGNAGE  
PRINTERS

ECO-SOLVENT  
PRINTING

MODEL NUMBER

PRINT Technology
Printhead
Maximum Resolution
Print Speed

INK Name
-------------

Colour
--------

Capacity
----------

Ink Type
----------

MEDIA HANDLING Paper Path
------------------------------

Maximum Roll Diameter/Weight
------------------------------

Maximum Reel Diameter/Weight
------------------------------

CONNECTIVITY Interface
---------------------------

Printer Language
------------------

Memory
--------

ENVIRONMENTAL CHARACTERISTICS Temperature
--

Humidity
----------

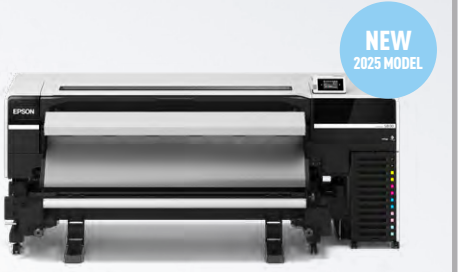
DIMENSIONS & WEIGHT Printer Dimension (W) (mm) - Max
---

Printer Dimension (D) (mm) - Max
----------------------------------

Printer Dimension (H) (mm) - Max
----------------------------------

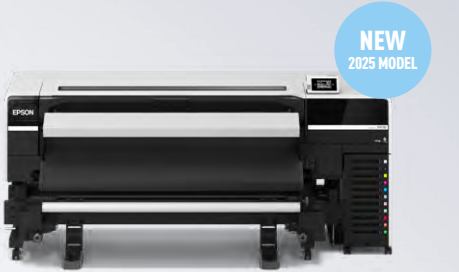
Weight
--------

SYSTEM Win PC System Requirement
-------------------------------------



SC-S8130

PrecisionCore Inkjet, Variable-Sized Droplet Technology
PrecisionCore MicroTFP Printhead
1200 x 1200 dpi
4 pass – Up to 33.3 m²/h (Banner 600 x 600 dpi) 6 pass – Up to 22.6 m²/h (PVC 1200 x 600 dpi) 16 pass – Up to 8.6 m²/h (Film 1200 x 1200 dpi)
Epson UltraChrome GS3 Ink
Cyan, Magenta, Yellow, Black, Light Cyan, Light Magenta
800ml / 1500ml
Ink Pack
Friction Feed
Max. 250mm / 45kg
Max. 250mm
Hi-Speed USB 3.0, 100BASE-TX/10000BASE-T
ESC/P Raster
4GB
Operating: 15°C to 35°C (20°C to 32°C recommended)
Operating: 20 – 80% (40 to 60% recommended)
2620
925
1021
Approx. 340kg
OS: Win10x64 or higher Processor: Intel® Core™ i3 3.0 GHz or faster Memory: 8GB or more Storage: 500GB or more Display Resolution: 1280 x 1024 or higher



SC-S9130

PrecisionCore Inkjet, Variable-Sized Droplet Technology
PrecisionCore MicroTFP Printhead
1200 x 1200 dpi
6 pass – Up to 20.1 m²/h (Banner 600 x 600 dpi) 10 pass – Up to 14 m²/h (PVC 1200 x 600 dpi) 17 pass – Up to 7.2 m²/h (Film 1200 x 600 dpi)
Epson UltraChrome GS3 Ink
Cyan, Magenta, Yellow, Black, Light Cyan, Light Magenta, Light Black, Orange, Red, Green, White or Cleaning Liquid
800ml / 1500ml
Ink Pack
Friction Feed
Max. 250mm / 45kg
Max. 250mm
Hi-Speed USB 3.0, 100BASE-TX/10000BASE-T
ESC/P Raster
4GB
Operating: 15°C to 35°C (20°C to 32°C recommended)
Operating: 20 – 80% (40 to 60% recommended)
2620
925
1021
Approx. 340kg
Approx. 323.4kg
OS: Win10x64 or higher Processor: Intel® Core™ i3 3.0 GHz or faster Memory: 8GB or more Storage: 500GB or more Display Resolution: 1280 x 1024 or higher



SURECOLOR  
SIGNAGE  
PRINTERS

RESIN PRINTING

MODEL NUMBER

<b>PRINT</b> Technology
Printhead
Maximum Resolution
Print Speed

<b>INK</b> Name
--------------------

Colour
--------

Capacity
----------

Ink Type
----------

<b>MEDIA HANDLING</b> Paper Path
-------------------------------------

Maximum Roll Diameter/Weight
------------------------------

Maximum Reel Diameter/Weight
------------------------------

<b>CONNECTIVITY</b> Interface
----------------------------------

Printer Language
------------------

Memory
--------

<b>ENVIRONMENTAL CHARACTERISTICS</b> Temperature
---

Humidity
----------

<b>DIMENSIONS &amp; WEIGHT</b> Printer Dimension (W) (mm) - Max
--

Printer Dimension (D) (mm) - Max
----------------------------------

Printer Dimension (H) (mm) - Max
----------------------------------

Weight
--------

<b>SYSTEM</b> Win PC System Requirement
--



SC-R5030

SC-R5030L

PrecisionCore Inkjet, Variable-Sized Droplet Technology	
PrecisionCore TFP Printhead	
1200 x 2400 dpi with 600 x 600 dpi 8 Half Tone layers	
Adhesive Vinyl, Paper/Other: 9 Pass Production 15.1 m²/h Banner, Non-woven Wallpaper: 6 Pass Production 21.0m²/h Textile: 14 Pass Production 9.5 m²/h Film: 26 Pass Production 5.2 m²/h	
Epson UltraChrome RS Ink	
Cyan, Magenta, Yellow, Black, Light Cyan, Light Magenta	
1500ml	1500ml x 2
Ink Pack	
Friction Feed	
Max. 250mm / 45kg	
Max. 200mm / 45kg	
USB (Hi-speed USB), 100BASE-TX/1000BASE-T	
ESC/P Raster	
2GB	
Operating: 15°C to 30°C (20°C to 32°C recommended)	
Operating: 20 – 80% (40 to 60% recommended)	
2949	
1045	
1774	
Approx. 425kg	Approx. 449kg
OS: Win10x64 or higher Processor: Intel® Core™ i3 3.0 GHz or faster Memory: 8GB or more Storage: 500GB or more Display Resolution: 1280 x 1024 or higher	

SURECOLOR  
SIGNAGE  
PRINTERS

UV PRINTING

MODEL NUMBER

<b>PRINT</b> Technology
Printhead
Maximum Resolution
Print Speed

<b>INK</b> Name
--------------------

Colour
--------

Capacity
----------

Ink Type
----------

<b>MEDIA HANDLING</b> Maximum Media Size
---

Maximum Media Thickness/Weight
--------------------------------

<b>CONNECTIVITY</b> Interface
----------------------------------

Printer Language
------------------

Memory
--------

<b>ENVIRONMENTAL CHARACTERISTICS</b> Temperature
---

Humidity
----------

<b>DIMENSIONS &amp; WEIGHT</b> Printer Dimension (W) (mm) - Storage
--

Printer Dimension (D) (mm) - Storage
--------------------------------------

Printer Dimension (H) (mm) - Storage
--------------------------------------

Weight
--------

<b>SYSTEM</b> Win PC System Requirement
--



SC-V1030

SC-V7000

MicroPiezo Inkjet, Variable-Sized Droplet Technology	MicroPiezo Inkjet, Variable-Sized Droplet Technology
MicroPiezo Printhead	MicroPiezo Printhead
1440 x 1440 dpi	720 x 1440 dpi
12 Pass (Colour) – 0.89 m²/h (720 x 720 dpi) 16 Pass (White) – 0.65 m²/h (1440 x 720 dpi)	Colour High Speed – Up to 43.1 m²/h (360 x 720 dpi) Speed – Up to 23.2 m²/h (720 x 720 dpi) Production – Up to 15.3 m²/h (720 x 720 dpi) Quality – Up to 10.5 m²/h (720 x 1080 dpi) High Quality – Up to 4.8 m²/h (720 x 1440 dpi)
Epson UltraChrome UV Ink	Epson UltraChrome UV Ink
Cyan, Magenta, Yellow, Black, White, Varnish	Cyan, Magenta, Yellow, Black, Light Cyan, Light Magenta, Grey, Red, White, Varnish
140ml	1000ml
Ink Pack	Ink Bottle
Max. 210 x 297mm	Max. 2500 x 1250mm
70 mm	Max. 80mm / Max. 50kg/m² (non-concentrated) Suction System User Selectable 4 Zones (X Axis: 2 Zones. Y Axis: 2 Zones)
Super-Speed USB (Compatible with the USB 3.0 Specification), 100BASE-TX / 1000BASE-T / IEEE802.11b/g/n/az/ac	Super-Speed USB (Type-B)
ESC/P Raster	N/A
1GB	N/A
Operating: 15°C to 30°C	Operating: 15°C to 35°C (20°C to 32°C recommended)
Operating: 20 – 80% (40 to 60% recommended)	Operating: 20 – 80% (40 to 60% recommended)
699	4635
699	2768
426	1730
Approx. 59kg	Approx. 1,370kg
OS: Win10x64 or higher Processor: Intel® Core™ i3 3.0 GHz or faster Memory: 8GB or more Storage: 500GB or more Display Resolution: 1280 x 1024 or higher	



## CONSUMABLES

## OPTIONS

**SC-S7130**



C13S210164

## CONSUMABLES

## OPTIONS

**SC-S8130**

C13S210153



SIGNAGE  
CONSUMABLES  
& OPTIONS

Description

CONSUMABLES

OPTIONS

PRINTER MODELS

SC-R5030



SC-R5030L



Ink Capacity

Product Code

Ink Capacity

Product Code

Black Ink

1500ml

C13T48D100

1500ml x 2

C13T45R100

Cyan Ink

1500ml

C13T48D200

1500ml x 2

C13T45R200

Magenta Ink

1500ml

C13T48D300

1500ml x 2

C13T45R300

Yellow Ink

1500ml

C13T48D400

1500ml x 2

C13T45R400

Light Cyan Ink

1500ml

C13T48D500

1500ml x 2

C13T45R500

Light Magenta Ink

1500ml

C13T48D600

1500ml x 2

C13T45R600

Grey Ink

Light Black Ink

Orange Ink

Red Ink

White Ink

Cleaning Liquid

Varnish

Optimiser

Maintenance Liquid

Maintenance Parts Kit

Ink Cleaner

Cleaning Stick

Clean Room Wiper

Waste Ink Bottle

Wiper Unit

Cleaning Kit

Coolant

Bulk Ink Solution

Substrate Support System

Additional Print Drying  
System

Option Set\*

\*Includes Bulk Ink Solution,  
Substrate Support System  
and Curing heater.

Media Edge Plate

Media Spacer

Head Installation Kit

Document Pack

SIGNAGE  
CONSUMABLES  
& OPTIONS

Description

CONSUMABLES

OPTIONS

PRINTER MODELS

SC-V1030



SC-V7000



Ink Capacity

Product Code

Ink Capacity

Product Code

Black Ink

140ml

C13T53R120

1000ml

C13T49V110

Cyan Ink

140ml

C13T53R220

1000ml

C13T49V210

Magenta Ink

140ml

C13T53R320

1000ml

C13T49V310

Yellow Ink

140ml

C13T53R420

1000ml

C13T49V410

Light Cyan Ink

1000ml

C13T49V510

Light Magenta Ink

1000ml

C13T49V610

Grey Ink

1000ml

C13T49V710

Light Black Ink

Orange Ink

Red Ink

White Ink

140ml

C13T53RA20

1000ml

C13T49V910

Cleaning Liquid

Varnish

Optimiser

Maintenance Liquid

Maintenance Parts Kit

Ink Cleaner

Cleaning Stick

Clean Room Wiper

Waste Ink Bottle

Wiper Unit

Cleaning Kit

Coolant

Bulk Ink Solution

Substrate Support System

Additional Print Drying  
System

Option Set\*

\*Includes Bulk Ink Solution,  
Substrate Support System  
and Curing heater.

Media Edge Plate

Media Spacer

Head Installation Kit

Document Pack

140ml

C13T53RV20

1000ml

C13T49VA10

1000ml

C13T49V810

1000ml

C13T49V010

1000ml

C13T49V010

1000ml

C13T49V010

C13S210146

C13S210148

C13S210135

C12C935921

C12C936421



# EPSON

Find out more at [www.epson.com.sg/gobig-signage](http://www.epson.com.sg/gobig-signage)



EpsonSingapore



EpsonSingapore



EpsonSoutheastAsia



Epson Singapore



EpsonSingapore

**Epson Singapore Pte Ltd**  
**Epson Customer Care Center**

438B Alexandra Road, Block B Alexandra Technopark, #04-01/04, Singapore 119968. Tel: (65) 6586-5500  
6 Harper Road, #04-01 Leong Huat Building, Singapore 369674. Epson Helpdesk: 800-120-5564. Please refer to [www.epson.com.sg/contact](http://www.epson.com.sg/contact) for opening hours.