

PRECISION AND PERFORMANCE IN EVERY DIVERSE PRINT.



Impeccable print quality and spectacular accuracy with Epson's large format printers.

Epson's new SureColor large format printers are the next generation of high-performance signage printers, built with the latest printing technology. They feature an advanced precision media feeding system, high-performance printheads, and a range of advanced capabilities designed to handle demanding jobs reliably while keeping operational cost low.

ENGINEERED FOR good

ULTRACHROME
UV
INK

EPSON ULTRACHROME
GSS
INK

Epson Edge Print PRO

PRECISIONCORE
PRINthead

Exceptional Print Quality

Explore enhanced printing speeds with the latest Epson technology, thanks to an improved printhead width and increased nozzle count.

Super Reliability

High-volume printing is made ultra-reliable with an advanced precision media feeding system* to ensure minimal downtime.

Engineered For Convenience

Epson's solutions such as Epson Cloud Solution PORT and Epson Edge Print PRO helps with ease of use and remote management during operations.

*The advanced precision media feeding system is available on selected models only.

INK AND PRINthead TECHNOLOGY



EPSON TOTAL SOLUTION



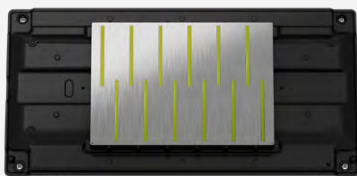
Epson Cloud Solution
PORT

BRILLIANCE IN RELIABILITY

Leading the next generation of high-performance signage printers, the Epson SureColor printers are engineered with advanced functions and the latest printing technologies. With printheads tailor-made to cater to each ink type, the SureColor printers produce impeccable text and image sharpness across a wide range of ink and media with micron-level precision and reliability.

Upgraded Printhead

The upgraded printhead features an increased size to accommodate a total of 9,600 nozzles*, significantly more than the previous version. This larger configuration is specifically designed to boost productivity by enabling faster print speeds.



SC-S9130



SC-S80670

Superior Ink Technology

Advanced ink technology from Epson brings a wide gamut of colours that comes with high image quality. The inks are optimised to perform high quality images and reduce machine downtime.

Eco-Solvent Printing

Using Epson UltraChrome GS3 eco-solvent ink – including an all-new Green ink along with the option for White ink* – for outstanding photographic print quality, durability, and media compatibility.

UV Ink

Vibrant 10-colour* UltraChrome UV ink, including dedicated red and grey inks, ensures smooth gradation and natural grey effects. The availability of varnish ink creates a visual and tactile experience.



Resin Printing

Epson's UltraChrome RS Ink offers wide substrate support. The odourless water-based ink enables the use of printed applications in sensitive environments.

CONNECT. OPTIMISE. GROW

At Epson, we understand that having real-time information at your fingertips is vital to your daily operations. This is why we have introduced the Epson Cloud Solution PORT, an intuitive cloud-based remote monitoring software. Monitor and manage your fleet of printers effectively across multiple sites, or a single site. Epson Cloud Solution PORT can be accessed from multiple devices including PCs, smartphones and tablets.

Fleetwide Printer Management

When managing printer efficiency and usage, intelligent and intuitive production monitoring is essential for maximising productivity, connectivity, and growth. A clear and simple dashboard, drawing from vast amounts of usage data, provides the insight needed to make critical business decisions.

Remote Monitoring System

Designed with simplicity and security in mind, the Epson Cloud Solution PORT provides a live view of your printer fleet production, equipment utilisation, and service information to better manage efficiency and optimise your Epson printing workflow.



Remote Monitoring¹

View live status of the entire printer fleet, output production rates, printer status, errors, and equipment utilisation.



Secure & Encrypted

Data stream and cloud are encrypted end-to-end to protect customers' privacy and usage data.



Production Efficiency Tracking & Reporting

Run reports to view total production efficiency, uptime, printer usage, and associated costs.



Mobile Access, No App Needed!

Optimised mobile website allows for easy, remote tracking of printer fleet while on the go.



Dashboard Tracking

Create in-shop dashboard to internally communicate key performance metrics to employees.



Expedited Service Response

Epson support helps reduce downtime with fast, remote troubleshooting.

¹ All features of this system require an active internet connection and use of a supported browser.

PRINT APPLICATIONS FOR DIFFERENT SCENARIOS

Versatility meets convenience, fulfilling your different printing needs effortlessly.

ECO-SOLVENT

The eco-solvent inks are generally more suitable for general printing of indoor signages (i.e. on PVC material), offering a wide colour gamut and competitive cost per print.



Retail Signage



Event & Exhibition



Backlit



Window Graphic



Product Display

RESIN

The resin inks are recommended for unique printing applications. Because of 'instant lamination' and higher scratch durability finishing, the inks are more suitable for applications requiring such features.



Outdoor Signage



Vehicle Wrap



Wallpaper



Canvas



Textile

UV

UV printing uses a unique drying method compared to the traditional inks where instead of evaporation, they are cured using high-intensity UV lights. This allows operators to use UV printing on virtually any substrate, catering to a wider range of media.



Stainless Steel



Wall Display Tile



Acrylic Frame



Glass Facade



Wooden Panel

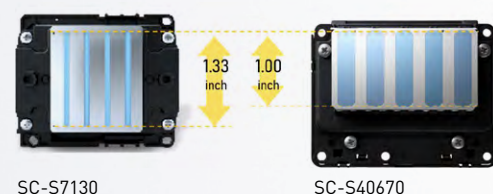


ECO-SOLVENT PRINTER

QUITE POSSIBLY THE BEST ECO-SOLVENT SIGNAGE PRINTERS EVER

Epson SureColor S-Series eco-solvent printers offer exceptional productivity, outstanding image quality, and iron-clad reliability.

With lightning-fast printing speeds and lamination capability, the SureColor S-Series printers empower you to turn around jobs fast. Additionally, the automated printer maintenance system lets you focus on printing, not on the printer.



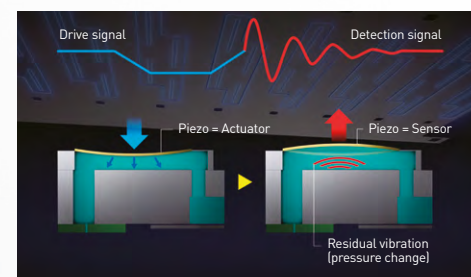
Latest Generation of Printhead

Upgraded PrecisionCore MicroTFP Printhead for faster print speed and increased productivity across all print modes.

Nozzle Verification Technology (NVT)

The Nozzle Verification Technology (NVT) automatically* detects clogged nozzles and triggers alerts for cleaning or to stop printing, ensuring consistent print quality.

*Automatic nozzle compensation is not supported on SC-S7130.



GREENGUARD Gold Certified

With low emission and VOC, GS3 inks are safe for indoor use.

64"

GS3
ULTRACHROME
GS3 INK

C M Y K
MAX. INK CAPACITY
PER COLOUR
800ml



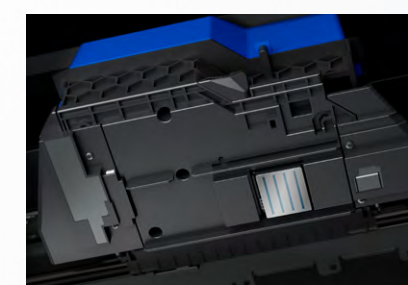
NEW
2025 MODEL

- Faster print speed and higher productivity with the latest generation PrecisionCore MicroTFP Printhead
- Print speed of up to 70.9m² per hour
- Reliable media feeding system



Optimised Usability

The SC-S7130 enhances operability with larger 800ml ink packs, reducing wastage and the need for frequent changeovers. Its new 4.3" optical touch display panel offers a more intuitive user experience, allowing operation even with gloves on.



Temperature Sensor

The new Carriage Temperature Sensor, placed closer to the nozzle, ensures faster detection of temperature changes for more consistent colour reproduction.



Sharper Text

The new 'Text Sharpness' mode in Epson Edge Print PRO enhances fine text printing, delivering more precise and crisp text output.

Epson Edge Print PRO

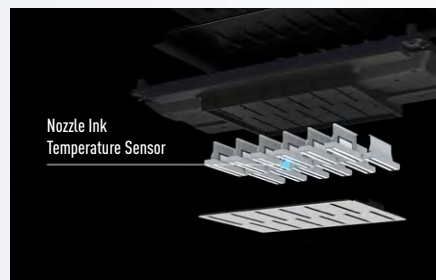


ECO-SOLVENT PRINTER

REDUCE INK COSTS WITH BULK-INK EDITIONS

These printers break new ground in sign printing by drastically reducing ink costs. They offer fast print speeds, best-in-class high colour accuracy and lamination compatibility, along with the convenience and cost savings of bulk ink.

Innovative bulk-ink packs offer low ink cost, so you can print more at a lower ink cost per square foot. Plus, in addition to delivering longer, unattended printing, they reduce plastic waste compared to traditional cartridge systems.



Nozzle Temperature Sensor for Consistent Quality

A new temperature sensor near the ink discharge area ensures precise temperature control, maintaining consistent ink dispensing for improved colour accuracy from the first print to the last.

Enhanced White Ink Output for Faster Results

The dual white ink channel enables higher white opacity output in less time, improving efficiency while maintaining vibrant, consistent results.



Bulk-Ink Solution

With a maximum ink capacity of up to 1500ml, save time and money, reduce waste, and increase uptime for uninterrupted operation.

64"

GS3
ULTRACHROME
GS3 INK
WITH GREEN



MAX. INK CAPACITY
PER COLOUR
1500ml

11-Colour Bulk-Ink Sign Printer

SC-S9130



NEW
2025 MODEL

- Faster print speed and higher productivity with the latest generation PrecisionCore MicroTFP Printhead
- 11-colour ink set with Orange, Red and all new Green
- Dual ink pack size option to suit different production needs

Effortless Media Handling

Bundled media lifter allows for easier loading of heavy media, reducing strains and bending posture to prevent injuries.



Dual Ink Pack Options

Choose between 800ml or 1500ml packs to match production needs and minimise downtime.

1,500ml Ink Packs

R

RESIN PRINTER

HIGHLY VERSATILE, HIGH-PERFORMANCE RESIN PRINTERS

Epson SureColor R-Series 64" roll-to-roll printers are the perfect choice for high-volume shops looking for a fast, versatile printing solution. Tackle any signage job with the multi-purpose resin ink that delivers outstanding, repeatable colour on a wide range of media, including wallpapers, uncoated papers, and more. Blistering print speed and immediate lamination boost productivity. Plus, economical bulk-ink packs offer increased convenience and reduce the total cost of ownership.

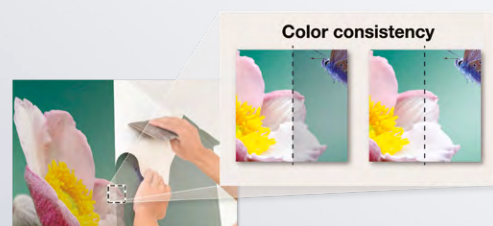


Epson UltraChrome RS Resin Inks

Dries instantly for highly scratch-resistant prints that you can laminate immediately for faster turnaround.

Instant Lamination

Achieve fuss-free instant lamination with our durable water-based inks.



New Multi-Purpose Resin Ink

Delivers extremely accurate, reliably consistent, high-quality colour for repeat jobs, brand colours, wall tiling applications and more.

64"

RS3
ULTRACHROME
RS3 INK



MAX. INK CAPACITY
PER COLOUR
1500ml



Standard Resin Printer

SC-R5030

- Outstanding image quality and repeatable colour at production speeds
- Convenient, efficient 1500ml bulk-ink packs

64"

RS3
ULTRACHROME
RS3 INK



MAX. INK CAPACITY
PER COLOUR
3000ml
(1500ml x 2)



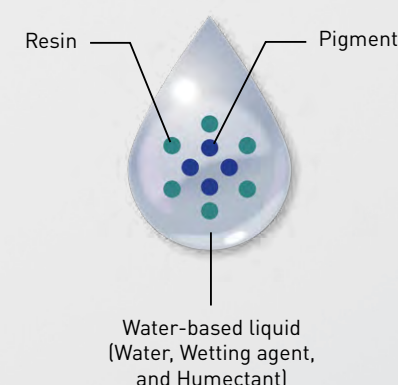
Supersized Bulk-Ink Resin Printer

SC-R5030L

- High-quality, colour-accurate output on a wide variety of media
- Cost-reducing 3000ml (1500ml x 2 packs) bulk-ink system
- Hot swap feature reduces printer down time

Q

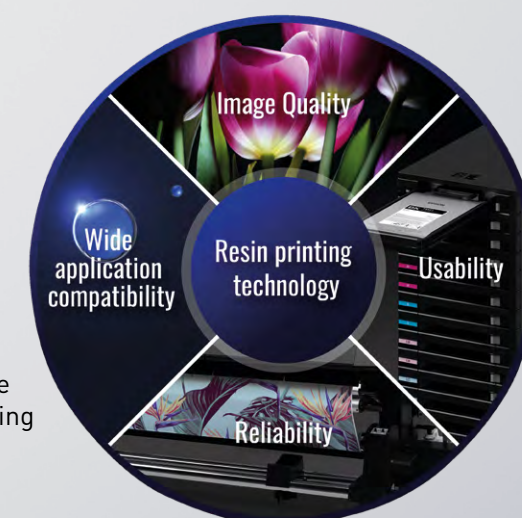
What is Water-Based Resin?



Water-Based Resin Inks contain

- Water
- Resin
- Wetting Agent
- Humectant

The UltraChrome RS Ink forms a more uniform layer of ink on the print media, eliminating the existing challenge of diffused reflection from surfaces.





UV DESKTOP PRINTER

AMPLIFY CREATIVITY WITH CUSTOMISABLE NOVELTY GOODS

Designed for the competitive niche market of customisable products, the Epson SureColor SC-V1030 is the perfect printer for businesses prioritising versatility and performance in their A4 desktop UV printing needs. The printer's extensive substrate compatibility, including wood and stainless steel, consistently delivers high-quality prints, providing new opportunities for businesses.



Note: Jigs are to be purchased separately.

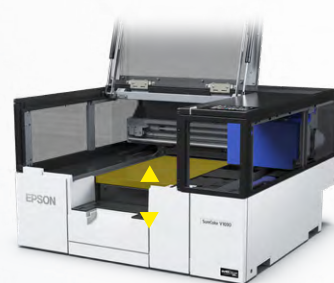
Fine Print Quality

Achieve impeccable results with fine lines and sharp text on a wide range of compatible substrates. With Epson UltraChrome UV inks, users can expect vibrant outputs in every print.

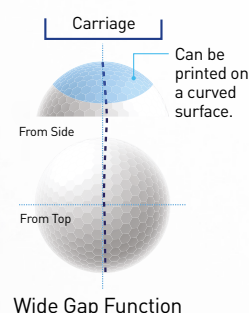


Smart Operation

The Auto Height Adjustment feature automatically adapts to substrates up to **70mm thick**, while the Wide Gap function enhances clarity on three-dimensional items like golf balls, pens, and phone cases, ensuring optimal printing performance.



Auto Height Adjustment



Wide Gap Function



Flexible Placement

With its compact design, the printer fits easily on desks or workbenches for easy job monitoring. The front operation streamlines maintenance and allows wire-free placement at the rear. Multiple units can be positioned side-by-side to maximise space.

A4

UV
ULTRACHROME
UV INK



MAX. INK CAPACITY
PER COLOUR
140ml

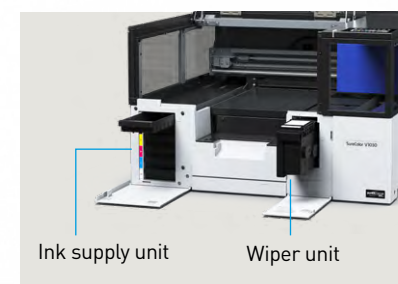


A4 Desktop UV Printer

SC-V1030

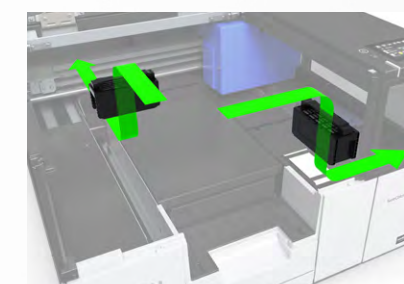
- High precision printing with crisp text and detailed images - perfect for small, customised products
- Compact front-loading design enables flexible placement in tight spaces
- Easy and safe maintenance with a no-ink-contact design – an automatic wiper unit that cleans and collect cured UV inks

Easy Maintenance and Operation



Safe Maintenance

Ink contact is minimised with an automatic wiper unit that cleans and collects cured UV inks.



Internal Air Circulation

With two built-in air filters that reduces odour, the printer is safe for operation in a closed environment.



Air filter



Large Display Panel

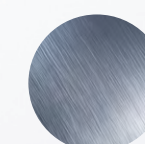
Effortlessly manage and oversee your print jobs, monitor ink levels, and perform printhead cleaning using the LED display panel. The panel also provides convenient visibility in low-light environments.

Print on Variety of Substrates

Print directly onto a large variety of substrates including wood, stainless steel, acrylic, plastics, ceramic, and more. Businesses can provide high-value novelty goods that are unique and personalised, offering customised products that are not commonly found.



Wood



Stainless Steel



Acrylic



Plastics



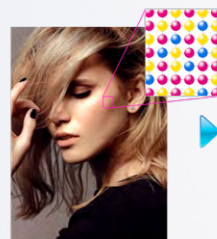
Ceramic



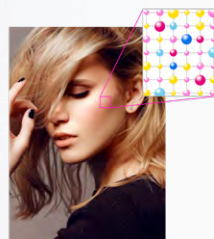
UV FLATBED PRINTER

PRODUCTION UV FLATBED PRINTER

With the ability to print directly on a wide variety of rigid substrates up to 80mm thick, the Epson SureColor SC-V7000 flatbed printer offers a cost-effective solution for expanding your shop's capabilities. Featuring 10-colour UltraChrome UV Ink, including red and grey inks, it produces bright, colourful, tactile high-quality prints with smooth gradation and neutral greys in record time. Plus, the quick media loading and easy alignment, along with intuitive RIP software makes the SureColor SC-V7000 a breeze to use.



Other brands



Epson SC-V7000
with Variable Droplet

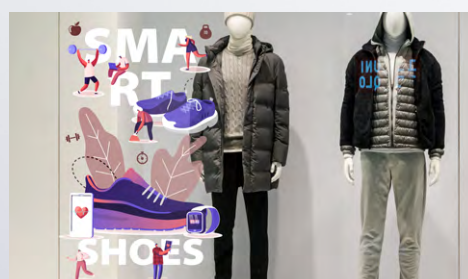
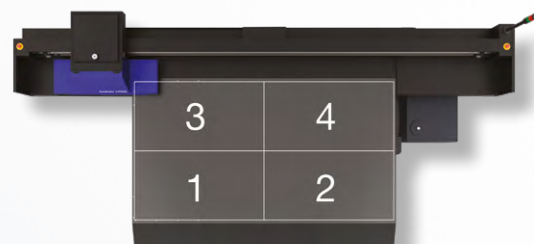
Epson UltraChrome UV Inks

With up to 10-colour ink set that provide low graininess and banding, the UV flatbed printer provides highly vivid and consistent prints with its striking reds and stunning colours.



Wide Media Usage

Automatic detection and adjustment to accommodate media of up to 80mm thick. The four zone vacuum can easily hold media in place securely.



White Ink and Varnish

Producing rich, high-quality prints on a variety of materials, the white ink and varnish enable operators to print glossy finishes, various textures, and more.

2.50m
by
1.25m

UV
ULTRACHROME
UV INK



MAX. INK CAPACITY
PER COLOUR
1000ml



Flatbed UV Printer

SC-V7000

- Prints on media and rigid substrates up to 2.50m by 1.25m and 80mm thick
- Delivers outstanding quality prints at true production speed
- Includes Epson Edge Print PRO software

Versatility Redefined

Epson's SC-V7000 reinvents what large format printers can offer, allowing businesses to print directly on a wide variety of substrates* up to 80mm media thickness. This includes vinyl, textile, canvas, film, aluminium composite boards and styrofoam boards. The possibilities to create with the SC-V7000 are limitless!



*Some materials will require pre-treatment. Contact Epson to find out more.

SURECOLOR
SIGNAGE
PRINTERS

SOLVENT PRINTING

MODEL NUMBER

PRINT
Technology

Printhead

Maximum Resolution

Print Speed

INK
Name

Colour

Capacity

Ink Type

MEDIA HANDLING
Paper Path

Maximum Roll Diameter/Weight

Maximum Reel Diameter/Weight

CONNECTIVITY
Interface

Printer Language

Memory

ENVIRONMENTAL CHARACTERISTICS
Temperature

Humidity

DIMENSIONS & WEIGHT
Printer Dimension (W) (mm) - Max

Printer Dimension (D) (mm) - Max

Printer Dimension (H) (mm) - Max

Weight

SYSTEM
Win PC System Requirement

Mac System Requirement



NEW
2025 MODEL

SC-S7130

PrecisionCore Inkjet,
Variable-Sized Droplet Technology

PrecisionCore MicroTFP Printhead

1440 x 1440 dpi

4 Pass – Up to 18.5 m²/h (Banner 600 x 600 dpi)
6 Pass – Up to 13.0 m²/h (PVC, 600 x 1200 dpi)
16 Pass – Up to 4.5 m²/h (Film 1200 x 1200 dpi)

Epson UltraChrome GS3 Ink

Cyan, Magenta, Yellow, Black

800ml

Ink Pack

Friction Feed

Max. 250mm / 45kg

Max. 200mm

Hi-Speed USB 3.0, 100BASE-TX/10000BASE-T

ESC/P Raster

Printer: 1 GB

Operating: 15°C to 35°C
(20°C to 32°C recommended)

Operating: 20 – 80%
(40 to 60% recommended)

2620

880

1338

Approx. 278kg

EPSON Edge Print PRO - OS: Windows 11, Windows 10 x64 - CPU: Intel® Core™ i7-14700 Processor (20core (8P+12E)/2.1GHz) or more – Memory: 32GB or more – Storage: 1TB (or larger) Solid State Drive – Monitor: 1280 x 1024 or more

EPSON Edge dashboard – OS: Mac OS X(10.7) or later – CPU: Multicore processor 3.0GHz

SURECOLOR
SIGNAGE
PRINTERS

SOLVENT PRINTING

MODEL NUMBER

PRINT
Technology

Printhead

Maximum Resolution

Print Speed

INK
Name

Colour

Capacity

Ink Type

MEDIA HANDLING
Paper Path

Maximum Roll Diameter/Weight

Maximum Reel Diameter/Weight

CONNECTIVITY
Interface

Printer Language

Memory

ENVIRONMENTAL CHARACTERISTICS
Temperature

Humidity

DIMENSIONS & WEIGHT
Printer Dimension (W) (mm) - Max

Printer Dimension (D) (mm) - Max

Printer Dimension (H) (mm) - Max

Weight

EPSON Edge dashboard – OS: Windows 7 x32/64 SP1, 8 x64, 8.1 x64, 10 x64 – CPU: Multicore processor 3.0GHz (Recommended System: Intel® Core™ i5 3.4GHz or later) – Memory: 4GB or more – Storage: 2GB or more – Monitor: 1280 x 1024 or more

(Recommended System: Intel® Core™ i5 3.4GHz or later) – Memory: 4GB or more – Storage: 2GB or more – Monitor: 1280 x 1024 or more



NEW
2025 MODEL

SC-S9130

PrecisionCore Inkjet,
Variable-Sized Droplet Technology

PrecisionCore MicroTFP Printhead

1200 x 1200 dpi

6 pass – Up to 20.1 m²/h (Banner 600 x 600 dpi)
10 pass – Up to 14 m²/h (PVC 1200 x 600 dpi)
17 pass – Up to 7.2 m²/h (Film 1200 x 600 dpi)

Epson UltraChrome GS3 Ink with Green

Cyan, Magenta, Yellow, Black, Light Cyan, Light Magenta, Light Black, Orange, Red, Green, White or Cleaning Liquid

800ml / 1500ml

Ink Pack

Friction Feed

Max. 250mm / 45kg

Max. 250mm

Hi-Speed USB 3.0, 100BASE-TX/10000BASE-T

ESC/P Raster

Printer: 4 GB

Operating: 15°C to 35°C
(20°C to 32°C recommended)

Operating: 20 – 80%
(40 to 60% recommended)

2620

925

1021

Approx. 323.4kg

SURECOLOR
SIGNAGE
PRINTERS

RESIN PRINTING

MODEL NUMBER

PRINT Technology
Printhead
Maximum Resolution
Print Speed

INK Name

Colour

Capacity

Ink Type

MEDIA HANDLING Paper Path

Maximum Roll Diameter/Weight

Maximum Reel Diameter/Weight

CONNECTIVITY Interface

Printer Language

Memory

ENVIRONMENTAL CHARACTERISTICS Temperature

Humidity

DIMENSIONS & WEIGHT Printer Dimension (W) (mm) - Max
--

Printer Dimension (D) (mm) - Max

Printer Dimension (H) (mm) - Max

Weight

SYSTEM Win PC System Requirement

Mac System Requirement



SC-R5030

SC-R5030L

PrecisionCore Inkjet, Variable-Sized Droplet Technology	
PrecisionCore TFP Printhead	
1200 x 2400 dpi with 600 x 600 dpi 8 Half Tone layers	
Adhesive Vinyl, Paper/Other: 9 Pass Production 15.1 m²/h Banner, Non-woven Wallpaper: 6 Pass Production 21.0m²/h Textile: 14 Pass Production 9.5 m²/h Film: 26 Pass Production 5.2 m²/h	
Epson UltraChrome RS Ink	
Cyan, Magenta, Yellow, Black, Light Cyan, Light Magenta	
1500ml	1500ml x 2
Ink Pack	
Friction Feed	
Max. 250mm / 45kg	
Max. 200mm / 45kg	
USB (Hi-speed USB), 100BASE-TX/1000BASE-T	
ESC/P Raster	
2GB	
Operating: 15°C to 30°C (20°C to 32°C recommended)	
Operating: 20 – 80% (40 to 60% recommended)	
2949	
1045	
1774	
Approx. 425kg	Approx. 449kg

EPSON Edge Print PRO – OS: Windows 11, Windows 10 x64 – CPU: Intel® Core™ i7-14700 Processor (20core (8P+12E))/2.1GHz) or more – Memory: 32GB or more – Storage: 1TB (or larger) Solid State Drive – Monitor: 1280 x 1024 or more

EPSON Edge dashboard – OS: Mac OS X(10.7) or later – CPU: Multicore processor 3.0GHz
--

SURECOLOR
SIGNAGE
PRINTERS

UV PRINTING

MODEL NUMBER

PRINT Technology
Printhead
Maximum Resolution
Print Speed

INK Name

Colour

Capacity

Ink Type

MEDIA HANDLING Maximum Media Size

Maximum Media Thickness/Weight

CONNECTIVITY Interface

Printer Language

Memory

ENVIRONMENTAL CHARACTERISTICS Temperature

Humidity

DIMENSIONS & WEIGHT Printer Dimension (W) (mm) - Storage
--

Printer Dimension (D) (mm) - Storage

Printer Dimension (H) (mm) - Storage

Weight

EPSON Edge dashboard – OS: Windows 7 x32/64 SP1, 8 x64, 8.1 x64, 10 x64 – CPU: Multicore processor 3.0GHz (Recommended System: Intel® Core™ i5 3.4GHz or later) – Memory: 4GB or more – Storage: 2GB or more – Monitor: 1280 x 1024 or more – UV Flatbed Controller: Win8/10 64bit, 8GB M, 250GB SSD, USB 3.0

(Recommended System: Intel® Core™ i5 3.4GHz or later) – Memory: 4GB or more – Storage: 2GB or more – Monitor: 1280 x 1024 or more



SC-V1030

SC-V7000

MicroPiezo Inkjet, Variable-Sized Droplet Technology	MicroPiezo Inkjet, Variable-Sized Droplet Technology
MicroPiezo Printhead	MicroPiezo Printhead
1440 x 1440 dpi	720 x 1440 dpi
12 Pass (Colour) – 0.89 m²/h (720 x 720 dpi) 16 Pass (White) – 0.65 m²/h (1440 x 720 dpi)	Colour High Speed – Up to 43.1 m²/h (360 x 720 dpi) Speed – Up to 23.2 m²/h (720 x 720 dpi) Production – Up to 15.3 m²/h (720 x 720 dpi) Quality – Up to 10.5 m²/h (720 x 1080 dpi) High Quality – Up to 4.8 m²/h (720 x 1440 dpi)
Epson UltraChrome UV Ink	Epson UltraChrome UV Ink
Cyan, Magenta, Yellow, Black, White, Varnish	Cyan, Magenta, Yellow, Black, Light Cyan, Light Magenta, Grey, Red, White, Varnish
140ml	1000ml
Ink Pack	Ink Bottle
Max. 210 x 297mm	Max. 2500 x 1250mm
70 mm	Max. 80mm / Max. 50kg/m² (non-concentrated) Suction System User Selectable 4 Zones (X Axis: 2 Zones. Y Axis: 2 Zones)
Super-Speed USB (Compatible with the USB 3.0 Specifictaion), 100BASE-TX / 1000BASE-T / IEEE802.11b/g/n/az/ac	Super-Speed USB (Type-B)
ESC/P Raster	N/A
1 GB	N/A
Operating: 15°C to 30°C	Operating: 15°C to 35°C (20°C to 32°C recommended)
Operating: 20 – 80% (40 to 60% recommended)	Operating: 20 – 80% (40 to 60% recommended)
699	4635
699	2768
426	1730
Approx. 59kg	Approx. 1,370kg

EPSON Edge dashboard – OS: Windows 7 x32/64 SP1, 8 x64, 8.1 x64, 10 x64 – CPU: Multicore processor 3.0GHz (Recommended System: Intel® Core™ i5 3.4GHz or later) – Memory: 4GB or more – Storage: 2GB or more – Monitor: 1280 x 1024 or more – UV Flatbed Controller: Win8/10 64bit, 8GB M, 250GB SSD, USB 3.0

(Recommended System: Intel® Core™ i5 3.4GHz or later) – Memory: 4GB or more – Storage: 2GB or more – Monitor: 1280 x 1024 or more

PRINTER MODELS

SIGNAGE CONSUMABLES & OPTIONS



NEW
025 MODEL

Description		Ink Capacity	Product Code
CONSUMABLES	 Black Ink	800ml	C13T51S100
	 Cyan Ink	800ml	C13T51S200
	 Magenta Ink	800ml	C13T51S300
	 Yellow Ink	800ml	C13T51S400
	 Light Cyan Ink		
	 Light Magenta Ink		
	 Grey Ink		
	 Light Black Ink		
	 Orange Ink		
	 Red Ink		
	 Green Ink		
	 White Ink		
	Cleaning Liquid	800ml	C13T56L000
	Varnish		
	Optimiser		
	Maintenance Liquid		
	Maintenance Parts Kit	C13S210164	
	Ink Cleaner	C13T699300	
	Cleaning Stick	C13S090013	
	Clean Room Wiper	C13S090016	
	Waste Ink Bottle	C13T724000	
	Wiper Unit		
Cleaning Kit			
Coolant			
OPTIONS	Bulk Ink Solution		
	Substrate Support System	C12C932361	
	Additional Print Drying System	C12C932381	
	Option Set* *Includes Bulk Ink Solution, Substrate Support System and Curing heater.		
	Media Edge Plate	C12C932411	
	Media Lifter		
	Head Installation Kit		
	Document Pack		

PRINTER MODELS

SIGNAGE CONSUMABLES & OPTIONS



NEW
025 MODEL

Description		Ink Capacity	Product Code	Ink Capacity	Product Code	
CONSUMABLES	 Black Ink	800ml	C13T51S100	1500ml	C13T51Y100	
	 Cyan Ink	800ml	C13T51S200	1500ml	C13T51Y200	
	 Magenta Ink	800ml	C13T51S300	1500ml	C13T51Y300	
	 Yellow Ink	800ml	C13T51S400	1500ml	C13T51Y400	
	 Light Cyan Ink	800ml	C13T51S500	1500ml	C13T51Y500	
	 Light Magenta Ink	800ml	C13T51S600	1500ml	C13T51Y600	
	 Grey Ink					
	 Light Black Ink	800ml	C13T51S700	1500ml	C13T51Y700	
	 Orange Ink	800ml	C13T51S800	1500ml	C13T51Y800	
	 Red Ink	800ml	C13T51S900	1500ml	C13T51Y900	
	 Green Ink	800ml	C13T51SF00	1500ml	C13T51YF00	
	 White Ink	800ml	C13T51SA00	1500ml	C13T51YA00	
	Cleaning Liquid	800ml	C13T56L000			
	Varnish					
	Optimiser					
	Maintenance Liquid					
	Maintenance Parts Kit	C13S210153				
	Ink Cleaner	C13T699300				
	Cleaning Stick	C13S090013				
	Clean Room Wiper	C13S090016				
	Waste Ink Bottle	C13T724000				
	Wiper Unit					
	Cleaning Kit					
Coolant						
OPTIONS	Bulk Ink Solution					
	Substrate Support System					
	Additional Print Drying System					
	Option Set* *Includes Bulk Ink Solution, Substrate Support System and Curing heater.					
	Media Edge Plate					
	Media Lifter					
	Head Installation Kit					
	Document Pack					

SIGNAGE
CONSUMABLES
& OPTIONS

Description

CONSUMABLES

OPTIONS

PRINTER MODELS

SC-R5030



SC-R5030L



Ink Capacity

Product Code

Ink Capacity

Product Code

SIGNAGE
CONSUMABLES
& OPTIONS

Description

CONSUMABLES

OPTIONS

PRINTER MODELS

SC-V1030



SC-V7000



Ink Capacity

Product Code

Ink Capacity

Product Code

- Black Ink
- Cyan Ink
- Magenta Ink
- Yellow Ink
- Light Cyan Ink
- Light Magenta Ink
- Grey Ink
- Light Black Ink
- Orange Ink
- Red Ink
- White Ink
- Cleaning Liquid
- Varnish
- Optimiser
- Maintenance Liquid
- Maintenance Parts Kit
- Ink Cleaner
- Cleaning Stick
- Clean Room Wiper
- Waste Ink Bottle
- Wiper Unit
- Cleaning Kit
- Coolant

- Bulk Ink Solution
- Substrate Support System
- Additional Print Drying System
- Option Set*
*Includes Bulk Ink Solution, Substrate Support System and Curing heater.
- Media Edge Plate
- Media Spacer
- Head Installation Kit
- Document Pack

- Black Ink
- Cyan Ink
- Magenta Ink
- Yellow Ink
- Light Cyan Ink
- Light Magenta Ink
- Grey Ink
- Light Black Ink
- Orange Ink
- Red Ink
- White Ink
- Cleaning Liquid
- Varnish
- Optimiser
- Maintenance Liquid
- Maintenance Parts Kit
- Ink Cleaner
- Cleaning Stick
- Clean Room Wiper
- Waste Ink Bottle
- Wiper Unit
- Cleaning Kit
- Coolant

- Bulk Ink Solution
- Substrate Support System
- Additional Print Drying System
- Option Set*
*Includes Bulk Ink Solution, Substrate Support System and Curing heater.
- Media Edge Plate
- Media Spacer
- Head Installation Kit
- Document Pack

1500ml

C13T48D100

1500ml x 2

C13T45R100

1500ml

C13T48D200

1500ml x 2

C13T45R200

1500ml

C13T48D300

1500ml x 2

C13T45R300

1500ml

C13T48D400

1500ml x 2

C13T45R400

1500ml

C13T48D500

1500ml x 2

C13T45R500

1500ml

C13T48D600

1500ml x 2

C13T45R600

1500ml

C13T45X100

1500ml

C13T48D700

1500ml x 2

C13T45R700

1500ml

C13T48D800

1500ml x 2

C13T45R800

C13S090013

C13S090013

C13S090016

C13S090016

C13S210071

C13S210071

C13S210100

C13S210100

C13S210103

C13S210103

C12C935291

C12C935291

C12C935321

C12C935321

C12C937271

C12C937271

140ml

C13T53R120

1000ml

C13T49V110

140ml

C13T53R220

1000ml

C13T49V210

140ml

C13T53R320

1000ml

C13T49V310

140ml

C13T53R420

1000ml

C13T49V410

1000ml

C13T49V510

1000ml

C13T49V610

1000ml

C13T49V710

1000ml

C13T49V810

140ml

C13T53RA20

1000ml

C13T49V910

1000ml

C13T49V010

140ml

C13T53RV20

1000ml

C13T49VA10

1000ml

C13T49V810

1000ml

C13T49V910

1000ml

C13T49V010

1000ml

C13T49VA10

1000ml

C13T49V810

1000ml

C13T49V910

1000ml

C13T49V010

1000ml

C13T49VA10

1000ml

C13T49V810

1000ml

C13T49V910

1000ml

C13T49V010

1000ml

C13T49VA10

1000ml

C13T49V810

1000ml

C13T49V910

1000ml

C13T49V010

1000ml

C13T49VA10

1000ml

C13T49V810

1000ml

C13T49V910

1000ml

C13T49V010

1000ml

C13T49VA10

1000ml

C13T49V810

1000ml

C13T49V910

1000ml

C13T49V010

1000ml

C13T49VA10

1000ml

C13T49V810

1000ml

C13T49V910

1000ml

C13T49V010

1000ml

C13T49VA10

1000ml

C13T49V810

1000ml

C13T49V910

1000ml

C13T49V010

1000ml

C13T49VA10

1000ml

C13T49V810

1000ml

C13T49V910

1000ml

C13T49V010

1000ml

C13T49VA10

1000ml

C13T49V810

1000ml

C13T49V910

1000ml

C13T49V010

1000ml

C13T49VA10

1000ml

C13T49V810

1000ml

C13T49V910

1000ml

C13T49V010

1000ml

C13T49VA10

1000ml

C13T49V810

1000ml

C13T49V910

1000ml

C13T49V010

1000ml

C13T49VA10

1000ml

C13T49V810

1000ml

C13T49V910

1000ml

C13T49V010

1000ml

C13T49VA10

1000ml

C13T49V810

1000ml

C13T49V910

1000ml

C13T49V010

1000ml

C13T49VA10

1000ml

C13T49V810

1000ml

C13T49V910

1000ml

C13T49V010

1000ml

C13T49VA10

1000ml

C13T49V810

1000ml

C13T49V910

1000ml

C13T49V010

1000ml

C13T49VA10

1000ml

C13T49V810

1000ml

C13T49V910

1000ml

C13T49V010

1000ml

C13T49VA10

1000ml

C13T49V810

1000ml

C13T49V910

1000ml

C13T49V010

1000ml

C13T49VA10

1000ml

C13T49V810

1000ml

C13T49V910

1000ml

C13T49V010

1000ml

C13T49VA10

1000ml

C13T49V810

1000ml

C13T49V910

1000ml

C13T49V010

1000ml

C13T49VA10

1000ml

C13T49V810

1000ml

C13T49V910

1000ml

C13T49V010

1000ml

C13T49VA10

1000ml

C13T49V810

1000ml

C13T49V910

1000ml

C13T49V010

1000ml

C13T49VA10

1000ml

EPSON

Find out more at www.epson.com.sg/gobig-signage



EpsonSingapore



EpsonSingapore



EpsonSoutheastAsia



Epson Singapore



EpsonSingapore

Epson Singapore Pte Ltd
Epson Customer Care Center

438B Alexandra Road, Block B Alexandra Technopark, #04-01/04, Singapore 119968. Tel: (65) 6586-5500
6 Harper Road, #04-01 Leong Huat Building, Singapore 369674. Epson Helpdesk: 800-120-5564. Please refer to www.epson.com.sg/contact for opening hours.