

STREAMLINE PRODUCTIVITY WITH HIGH-SPEED SCANNING PERFECTION.



Boost efficiency and productivity with the all-purpose, high-speed Epson Workforce DS-770II scanner. Capable of scanning a myriad of media from fragile documents to plastic cards, the DS-770II also allows scanning of thick objects such as books with its flatbed option.



Scan
up to A3*



45 ppm / 90 ipm
Scan Speed



One-pass
Duplex
Scanning



Compatible
with USB 3.2
Gen 1

ENGINEERED FOR good



High-speed Scanning

Boasting a scan speed of 45ppm/90ipm, the DS-770II offers one pass duplex scanning.

Impressive Media Handling

Handles a wide variety of media from 27gsm to 413gsm efficiently and seamlessly.

Flatbed Option

A Flatbed Dock can be used with the Epson Perfection™ V39II to enable both sheetfed and flatbed scanning.

* Using carrier sheet by folding in half.



Experience a new level of quality and efficiency with the high-speed and versatile Epson WorkForce DS-770II. Designed to handle a wide variety of media, you'll be able to scan anything from fragile paper documents to plastic cards and even thick books with its flatbed option. Managing your scanned files is also a breeze with the Document Capture Pro software.

Versatile, High-speed Scanning

Boasting a scan speed of up to 45ppm/90ipm, the DS-770II offers one pass duplex scanning, that brings additional convenience in your daily use.



Impressive Media Handling

The DS-770II handles a wide variety of media between 27-413 gsm, so you can scan anything from paper documents to plastic cards such as ID, credit and business cards efficiently and seamlessly.



Flatbed Option*

With the optional Flatbed Dock, the Epson Perfection V39II can be used together with the DS-770II to provide a flatbed option for users who need to scan thick objects such as books, or small and fragile documents that can be easily damaged such as receipts.



* Push scanning is not supported for Flatbed. For Mac, installation of the V39II scanner driver is required.

Scan Fragile and A3 Documents Easily

Scan small and fragile documents, as well as A3-sized documents, using a carrier sheet that can be automatically detected by the DS-770II. Alternatively, you may scan fragile documents without using a carrier sheet by turning on the Slow Scan Mode.

User-friendly Features

Automatic Feeding Mode
The Automatic Feeding Mode enables large volumes of documents to be scanned continuously. In addition, this mode allows you to scan documents of different sizes at once without needing to arrange them by size, and saving them as a single PDF.



Paper Protection Function
Upon detection of abnormal paper feeding or stapled/folded paper, scanner will automatically stop to prevent damage to important documents.

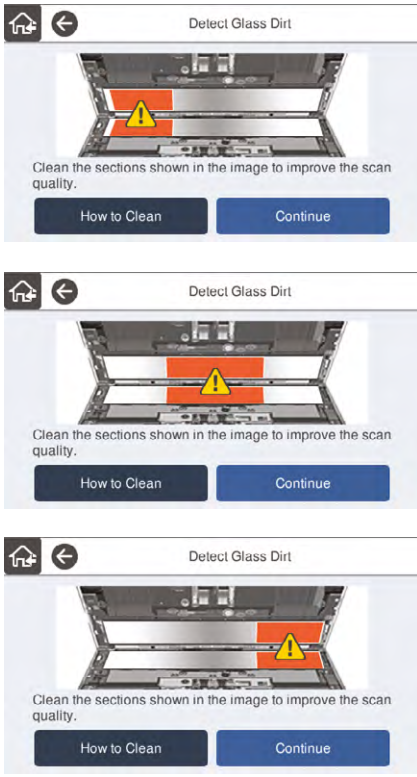


Double Feed Detection Skip Function
Activate the Double Feed Detection Skip function to scan documents with stickers and labels.



Image Sensor Glass Dirt Detection

A notification will be sent upon detection of dirt in three areas before scanning. This reduces the risk of re-scanning due to bad image quality, improves the Scan-to workflow and increases business productivity.



Epson Scan 2

Text Enhancement
Improves text recognition when scanning text documents, whether in colour, grayscale or black-and-white. Removes background for better clarity, which is especially useful for double-sided printed documents.

Document Skew Correction
Automatically adjusts and straightens scanned images.

Colour Enhancement & Colour Dropout
Remove or enhance the visibility of ink signatures such as "Confidential" and "Urgent" stamps. Users can pick one of the preset colours (red, green, blue, pink, purple, yellow, orange, or all colours except black), or use the customised settings to dropout or enhance up to 5 colours of your choice with a single scan. Up to 10 preset colours can be saved for reuse.

PDF Features for Added Convenience
The built-in OCR enables searchable PDF files. Secure your PDF files by setting a password to prevent unauthorised viewing, editing or printing.

Document Management

Document Capture Pro*
Easily scan, view, edit, save and transfer scanned documents. The software optically recognises barcodes, characters and blank pages in scanned documents to separate them into different folders. It allows you to create up to 30 customised job settings, making multiple scan jobs a breeze.



* Limited functionality for Mac version of Document Capture software.

SPECIFICATIONS

Product Name		DS-770II	
SKU Code		B11B262503	
Scanner			
Scanner Type		A4 sheet-fed, one-pass duplex colour scanner	
Sensor Type		Contact Image Sensor (CIS) x 2	
Scanning Method		Fixed carriage and moving document	
Light Source		RGB LED x 2	
Optical Resolution ^{*1}		600 x 600 dpi	
Output Resolution		50 - 1,200 dpi (in 1 dpi increments)	
Bit Depth			
Colour		30-bit input, 24-bit output	
Grayscale		10-bit input, 8-bit output	
Black & White		10-bit input, 1-bit output	
Document Size			
Minimum		50.8 x 50.8 mm	
Maximum		215.9 x 6,096 mm	
Supported Paper Weight		27 - 413 g/m ² (Less than A8: 127 - 413 g/m ²)	
ADF Capacity		100 sheets (80g/m ²)	
Daily Scan Volume		Up to 7,000 pages / day	
Multi-feed Detection		Ultrasonic Sensor and Length Detection	
Interface		USB 3.2 Gen 1	
Scanning Speed ^{*2}			
Resolution (A4, Colour/Monochrome)			
300 dpi		45 ppm / 90 ipm	
600 dpi		12 ppm / 24 ipm	
Drivers and Software			
Supported OS (Scanner Driver)			
Windows		Windows XP / Vista / 7 / 8 / 8.1 / 10 / 11, Server 2003 / 2008 / 2012 / 2016 / 2019 / 2022 / 2025	
Mac		Mac OS X 10.6.8 or later, macOS 11 or later	
Driver Compatibility		TWAIN, SANE, WIA, ICA, ISIS	
Bundled Software		Epson Scan 2 ISIS Driver (Web Download) Epson Scan OCR Component Epson Scan PDF Extensions Document Capture Pro (Windows) / Document Capture (Mac)	
Software Solutions Compatibility		Epson Device Admin	
File Format		Epson Scan 2: JPEG, TIFF, Multi-TIFF, PDF, Searchable PDF, BMP ^{*3} , PNG Document Capture Pro: JPEG, JPEG2000 ^{*3} , BMP ^{*3} , PDF, Searchable PDF, TIFF, Multi-TIFF ^{*3} , PNG, DOCX, XLSX, PPTX ^{*3}	
Electrical Specifications			
Rated Voltage		AC 100 - 240 V	
Rated Frequency		50 - 60 Hz	
Power Consumption			
Operating		12W	
Ready Mode		5.4W	
Sleep Mode		1.0W	
Power Off		0.1W	
Environmental Conditions			
Temperature			
Operating		5 - 35°C	
Storage		-25 - 60°C	
Humidity			
Operating		15 - 80% (No condensation)	
Storage		15 - 85% (No condensation)	
Options & Consumables		Durability	
Flatbed Dock		-	B12B819011
Roller Assembly Kit		200,000 scans	B12B819671
Carrier Sheet		3,000 scans	B12B819051
Cleaning Kit		-	B12B819291

*1 Scanning resolution as defined by ISO14473.
*2 Based on A4 documents.
*3 For Windows version only.

Dimensions & Weight

DS-770II
Weight: 3.7 kg (8.2 lb)



What's in the box:

- Scanner Main Unit
- USB 3.2 Cable
- AC Adapter
- Power Cable
- Software CD
- Setup Guide

©2025 Epson Singapore Pte Ltd. All Rights Reserved. Reproduction in part or in whole, without the written permission from Epson, is strictly prohibited.

EPSON is a registered trademark of Seiko Epson Corporation.

All other product and company names used herein are for identification purposes only and are the trademarks or registered trademarks of their respective owners.

Epson disclaims any and all rights in those marks. Projected images shown herein are simulations. The actual product design and contents may vary. Specifications are subject to change without notice and may vary between countries. Please check with local Epson offices for more information.

Dealer's Stamp

Information correct at time of printing.
Printed July 2025