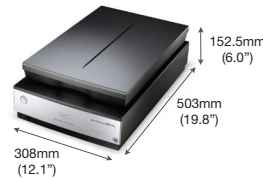


**SPECIFICATIONS**  
**PERFECTION™ V850 PRO**

<b>MODEL NUMBER</b>	V850
<b>Basic</b>	
Scanner Type	Flatbed colour image scanner
Optical Resolution *1	Main 6400 dpi x Sub 9600 dpi (Film Scanning with Film Holder) Main 4800 dpi x Sub 9600 dpi (Reflective and Contact Sheet Scanning)
Optical Density	4.0 Dmax
Document Size	Reflective Up to 216 x 297 mm Transparency Up to 203 x 254 mm 35mm x 18 frames strip film 35mm x 12 frames mounted film (6 x 20cm) x 1 frame Medium format (4" x 5") x 1 frame, Up to 8" x 10" (with film area guide)
Interface	USB 2.0
<b>Configuration</b>	
Photoelectric Device	Epson Matrix CCD™ (6 line colour CCD with On Chip Micro Lens) 40,800 x 56,160 pixels (4800 dpi) 37,760 x 62,336 pixels (6400 dpi)
Light Source	White LED
Sub-Scanning Method	Fixed document and moving carriage
<b>Performance</b>	
Output Resolution *2	25 to 12,800 dpi (in 1 dpi increments)
Pixel Depth	16 bits/pixel (Input 16 bits/pixel, Output 16 bits/pixel)
<b>Scanning Speed</b>	
Reflective Scanning (Speed Mode) *3	<b>DPI</b> <b>Speed</b>
Preview	6 sec
Monochrome	12 sec
24-bit Colour	12 sec
Film Scanning (Quality Mode)	<b>DPI</b> <b>Speed</b>
35mm Positive Film	2400                      37 sec
	4800                      66 sec
	6400                      85 sec
35mm Negative Film	2400                      32 sec
	4800                      58 sec
	6400                      76 sec
<b>Functions</b>	
Driver and Bundled Software	Epson Scan Epson Event Manager (Win / Mac) Epson Copy Utility Epson ScanSmart SilverFast SE 8 Plus (Win / Mac) X-Rite i1 Scanner (with IT8 target)
<b>Supported Platforms</b>	
	Microsoft Windows XP / Vista / 7 / 8 / 8.1 / 10 Mac OS X 10.6.8 or later
<b>Environmental Conditions</b>	
Temperature	Operating            5 - 35°C Storage              -25 - 60°C
Humidity	Operating            10 - 80% (No Condensation) Storage              10 - 85% (No Condensation)
<b>Electrical Specifications</b>	
Rated Voltage	AC 220-240 V
Rated Frequency	50 - 60Hz
Power Consumption	Operating            23W Ready                12W Sleep                1.5W Power Off            0.3W

**EPSON**  
EXCEED YOUR VISION

**Dimensions & Weight**  
**V850**  
**Weight:** 6.6kg (14.6lb)



\*1 Optical Resolution as defined by ISO 14473.

\*2 With interpolation, scanning area may be restricted if resolution setting is large.

\*3 Scanning Speed Data Patterns. The thumbnail images below show the scanning patterns used to determine scanning speed specifications.



Photo A4

Scanning speed test results vary according to system configuration, dpi setting, and scan mode setting. However, documents and photos other than those pictured above can be substituted without significantly affecting test results.

© 2020 Epson Singapore Pte Ltd. All Rights Reserved. Reproduction in part or in whole, without the written permission from Epson, is strictly prohibited. EPSON and EXCEED YOUR VISION are registered trademarks of Seiko Epson Corporation. All other products names and other company names used herein are for identification purposes only and are the trademarks or registered trademarks of their respective owners. Epson disclaims any and all rights in those marks. Print samples shown are simulations only. Specifications and product availability are subject to change without notice and may vary between countries. Please check with local Epson offices for more information.

Dealer's Stamp

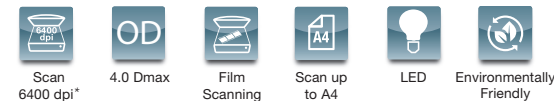
Information correct at time of printing  
Printed May 2020

**SCANNER**  
**PERFECTION™ V850 PRO**

**EPSON**  
EXCEED YOUR VISION



If you want superb scans from your photos or films, look no further than Epson Perfection V850 Pro. Boasting up to 6400 dpi with Optical Density of 4.0 Dmax for film scanning and enhanced by an energy-efficient ReadyScan LED technology, you can expect images refined in brilliant resolutions, with zero warm-up time. Two sets of film holders with adjustable height are included to provide greater versatility in film scanning.



**IT'S IN THE DETAILS.**

**Proven Dual Lens System**

Quality scans of up to 4800 dpi for reflective scanning and 6400 dpi with Optical Density of 4.0 Dmax for film scanning with film holders.

**Versatile Film Support**

Two sets of film holders of each type with Anti-Newton Ring glass and adjustable height are provided.

**Zero Warm-up Time**

Reduce waiting time and energy consumption with ReadyScan LED.



\*Film scanning with film holder only.

Sales Enquiries  
**800 120 5564**

For latest specifications, visit [www.epson.com.sg/scanner](http://www.epson.com.sg/scanner) or call **800 120 5564**.

Epson Singapore Pte Ltd 1 Harbourfront Place, #03-02 HarbourFront Tower One, Singapore 098633. Tel: (65) 6596-5500 Fax: (65) 6271-9755  
Epson Customer Care Centre 108, Pasir Panjang Road, #04-08 Golden Agri Plaza, Singapore 118535. Epson Helpdesk: 800 120 5564. Operating hours: Monday - Friday, 9am - 6pm, Saturday, 9am - 1pm. Closed on Sunday and Public Holiday.

Discover quality and versatility with excellent scans of up to 6400 dpi with Optical Density of 4.0 Dmax for film scanning. The V850 comes equipped with four height-adjustable film holders to support a variety of film formats, and also features zero warm-up time, enabled by its ReadyScan LED light source.



### Proven Dual Lens System

Bring out exquisite quality from your photo or film with the Dual Lens System, capable of resolutions up to 6400 dpi\* with an Optical Density of 4.0 Dmax for film scanning and 4800 dpi for reflective scanning. Combined with Epson Matrix CCD™, you can enjoy brilliant details from your scans, making it perfect for your work or hobby.



\*Film scanning with film holder only.

### Versatile Film Support

Two sets of film holders for 35mm strip film or mounted film, 6 x 20cm medium format film, 4" x 5" large format film and one film area guide for scanning up to 8" x 10" transparency, experience versatility and ease in your scans.

The film holders are equipped with Anti-Newton Ring glass\*\* to maintain film flatness and have up to 5 height adjustment levels to achieve the sharpest scans.



\*\*Except for the 35mm mounted film holder.

### Zero Warm-up Time

The V850 is equipped with energy-saving and eco-friendly ReadyScan LED light sources that require zero warm-up time, providing hyper-responsive scanning. The V850 has a power-saving sleep mode that reduces energy consumption even further.

### Designed for Greater Productivity

Push the limits of your editing potential with a software bundle of scanning and imaging tools that let you create the images you want.

### Epson Copy Utility

Copy photos and documents easily without a copy machine or an all-in-one printer. Epson Copy Utility easily combines your Epson Scanner and Printer into a copy machine.

### Epson Event Manager

Make regular scan jobs easier by creating ten customisable jobs. Users can also assign a job to the scanner button for one touch scanning.

### LaserSoft SilverFast SE Plus

Simplify scanning workflow with advanced features to optimise image quality.

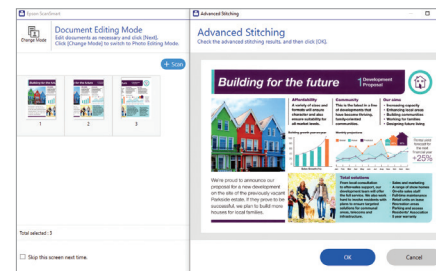


### i1 Scanner (with IT8 target)

Create input colour profiles for the scanner using IT-8 calibration target to achieve better colour accuracy for your scanned images.

### Epson ScanSmart

Large originals can be scanned and stitched into a single image with Epson ScanSmart. This software can also perform simple adjustments to rearrange and rotate documents, perform automatic enhancements to photos, and save your files into a variety of formats with the capability to create Searchable PDF.



### Epson Scan

The Epson Scan driver provides a user-friendly software interface that caters to your every need. A fully automatic scanning function gets new users off and running and professionals will enjoy the suite of advanced tools to get the best scan results.

### Colour Restoration

Restore the original colours of faded photos to make them look as good as new again.



### Backlight Correction

Reduce interference from background light by correcting shadows, creating a clearer and sharper image.

### DIGITAL ICE™

This image restoration solution uses a unique combination of hardware and software to correct image defects.

DIGITAL ICE for Film: the scanner uses an infrared light source to detect dust and scratches on the surface of the film. In a multi-pass process, the dust and scratches are mapped out and carefully removed from the scanned image, leaving the composition and quality intact.

DIGITAL ICE for Prints: the scanner uses two lamps at different angles to detect tears, folds and creases on prints and corrects the scanned image accordingly.



### Advanced Image Adjustment Tools

Tap upon a host of advanced tools to achieve the best results.

