



## PROFESSIONAL A3 PHOTO SCANNING BRILLIANCE.



The Expression 12000XL is designed for professionals and organisations that demand excellent A3 scanning performance. With its 2400 dpi resolution, 3.8 Dmax, 48-bit colour depth and optional Transparency Unit, it is the ideal solution for scanning everything from photos, maps, to architectural plans and various film formats. Imaging and photo restoration software complements the scanner for consistently impressive results.



Scan Up  
to A3



Power  
Savings

IT'S IN THE DETAILS.

### Extraordinary Image Quality

2400 x 4800 dpi resolution with Micro Step Drive™ and optical density of 3.8 Dmax for superb clarity and detail.

### Impeccably Clear and Sharp Scans

3-colour, 6-line CCD with large pixel size and Auto Focus optics system to ensure high quality scans.

### Versatile Film Support

Scan film formats from 35mm film to A3-sized transparencies. 2 sets of film holders are provided for 4 film formats.

Fast and flexible, the Expression 12000XL deftly handles every scanning task for media up to A3 in size. An optical resolution of 2400 dpi and optical density of 3.8 Dmax ensure crisp, professional results while the optional Transparency Unit expands its capabilities to cover a wide variety of film formats.



### Extraordinary Image Quality

At the heart of the Expression 12000XL is a high-definition CCD sensor with a resolution of 2400 x 4800 dpi. To eliminate image 'ghosting', the sensor is covered with anti-reflection coated glass while Epson's Micro Step Drive technology moves the optical carriage with ultra-high precision to produce greater detail. Together with an optical density of 3.8 Dmax and 48-bit depth, the scanner allows you to easily and consistently achieve scans with superior tones and colour reproduction.



### Impeccably Clear and Sharp Scans

Beyond optical resolution, the CCD sensor sports a new 6-line CCD sensor array with large pixels that provides greater scanning details during every pass. The scanner is also equipped with an Auto Focus system for clearer and sharper scans. The optical system can achieve pinpoint focusing automatically, or allow you to take full creative control via optional Manual Focus.



Without Auto Focus



With Auto Focus

### Versatile Film Support

With the optional Transparency Unit installed, the Expression 12000XL becomes a film scanning powerhouse. It accepts a wide range of film formats from 35mm film to A3-sized transparencies and comes with 2 sets of film holders for the following film formats: 35mm strip film, 35mm mounted film, 6 x 18cm medium format film and 4" x 5" large format film.



## Bundled Software

### Epson Scan 2

Epson Scan 2 offers imaging professionals an array of enhancement tools that provide immediate correction of defects on films and photos.

### Colour Restoration

Restore original colours of faded photos to make them look new again.



Before



After

### Dust Removal

Automatically eliminates dust and specks on film scans.



Before



After

### Grain Reduction

Reduces the grainy and rough appearance of enlarged images from films by applying a smoothing filter.



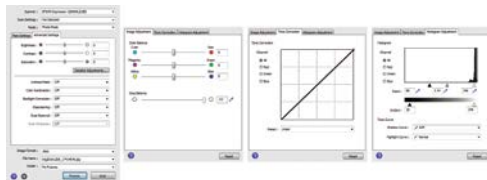
Before



After

### Advanced Image Adjustment Tools

Tap upon a host of advanced tools to achieve the best results.



### LaserSoft SilverFast® Ai



A professional scanning and imaging software that includes dust and scratch reduction, noise elimination functions and automatic colour calibration with IT8 target.

### Free Angle Hinge

A free angle hinge allows the lid to be easily opened and stopped at an angle between 15 to 70 degrees. This increases usability, even with one hand.

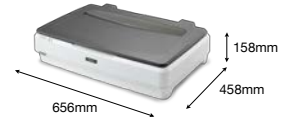
### ReadyScan LED

The Expression 12000XL is equipped with ReadyScan LED, an energy-saving and eco-friendly light source that requires zero warm-up time, providing hyper-responsive scanning. The 12000XL has a power-saving sleep mode that reduces energy consumption even further.

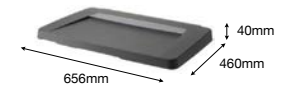


<b>Model Number</b>	<b>12000XL</b>
<b>Scanner</b>	
Scanner Type	A3 Flatbed Colour Image Scanner
Sensor Type	6-line Colour CCD
Scanning Method	Fixed document and moving carriage
Light Source	LED
Optical Resolution*1	2,400 x 4,800 dpi
Output Resolution	50 - 6,400 dpi (in 1 dpi increments)
Bit Depth	
Colour	48-bit input, 24/48-bit output
Greyscale	16-bit input, 8/16-bit output
Black-and-White	16-bit input, 1-bit output
<b>Maximum Document Size</b>	
Flatbed	310 x 437 mm (12.2 x 17.2")
TPU	309 x 420 mm (12.2 x 16.5")
<b>Supported Film Types (with Film Holder)</b>	
Strip Film Holder	35mm film x 48 Frames
Mounted Film Holder	35mm film x 30 Frames
Medium Format Film Holder	6 x 18cm film x 6 Frames
4 x 5" Film Holder	4 x 5" film x 8 Frames
<b>Interface</b>	USB 2.0
<b>Scanning Speed</b>	
<b>Reflective (A4 Documents)</b>	
Resolution	
300 dpi Colour	12 sec
300 dpi Black-and-White	12 sec
<b>Transparency (35mm Film)</b>	
Resolution (Film Type)	
1200 dpi (Positive Film)	57 sec
2400 dpi (Positive Film)	57 sec
1200 dpi (Negative Film)	61 sec
2400 dpi (Negative Film)	61 sec
<b>Drivers and Software</b>	
<b>Supported OS (Scanner Driver)</b>	
Windows	Windows XP / Vista / 7 / 8 / 8.1 / 10 / Server 2003 / 2008 / 2012 / 2016 / 2019
Mac	Mac OS X 10.6.8 or later
Driver compatibility	TWAIN
Bundled Software	Epson Scan 2 LaserSoft SilverFast Ai (with IT8 Target) Epson Scan 2: JPEG, TIFF, Multi-TIFF, PDF, Searchable PDF, BMP, PNG
File Format	
<b>Electrical Specifications</b>	
Rated Voltage	AC 100-240 V
Rated Frequency	50 - 60 Hz
<b>Power Consumption</b>	
Operating	Approx. 30W (without Optional Transparency Unit) Approx. 40W (with Optional Transparency Unit)
Ready Mode	Approx. 20W (without Optional Transparency Unit) Approx. 22W (with Optional Transparency Unit)
Sleep Mode	Approx. 2.8W (without Optional Transparency Unit)
Power off	Approx. 0.5W
<b>Environmental Conditions</b>	
<b>Temperature</b>	
Operating	5 - 35°C
Storage	-25 - 60°C
<b>Humidity</b>	
Operating	10 - 80% (No condensation)
Storage	10 - 85% (No condensation)
<b>Options &amp; Consumables</b>	
A3 Transparency Unit	<b>Order Code</b> B12B819221

**Dimensions & Weight**  
**Expression 12000XL**  
**Weight: 14.3kg**



**Dimensions & Weight**  
**Optional Transparency Unit**  
**Weight: 6.2kg**



\*1 Scanning resolution as defined by ISO14473.

**What's in the box (Scanner):**

- Scanner Main unit
- USB 2.0 Cable
- AC Adapter
- Power Cord
- Software CD
- Setup Guide

**What's in the box (A3 Transparency Unit option):**

- A3 Transparency Unit
- Holder Guide
- 35mm strip film holder x 2
- 35mm mounted film holder x 2
- 6 x 18cm film holder x 2
- 4 x 5" film holder x 2
- User Manual

© 2019 Epson Singapore Pte Ltd. All Rights Reserved. Reproduction in part or in whole, without the written permission from Epson, is strictly prohibited. EPSON and EXCEED YOUR VISION are registered trademarks of Seiko Epson Corporation. All other product names and other company names used herein are for identification purposes only and are the trademarks or registered trademarks of their respective owners. Epson disclaims any and all rights in those marks. Print samples shown are simulations only. Specifications and product availability are subject to change without notice and may vary between countries. Please check with local Epson offices for more information.

Information correct as at June 2019