

EFFORTLESS SCANNING FOR AN OPTIMAL DIGITAL STORAGE SOLUTION.



Optimise Business Efficiency with Fast and Flexible Document Scanning.

The Epson WorkForce DS-1730 and DS-1760WN A4 document scanners optimise business workflows with fast scanning speeds and efficient digital storage. Their compact design maximises workspace, while versatile media handling offers flexible solutions to meet diverse business needs. Designed with sustainability in mind, these scanners are made with up to 30% recycled plastic*, reducing environmental impact.



Scan
up to A4



30 ppm / 60 ipm
scan speed



One-pass
Duplex Scanning



Wi-Fi/
Wi-Fi Direct^



Ethernet^



Environmentally
Friendly

ENGINEERED FOR good

Built for Business

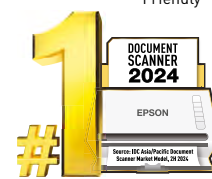
Enjoy fast scan speeds of up to 30 ppm and an ADF paper capacity of up to 60 sheets to enhance business productivity.

Effortless Scanning

Work becomes seamlessly easy with effortless scanning of various media types, including ID cards and even passports.

PC-less Operation with ScanWay^

Simplify your workflow by sending data directly to network folder, email, cloud or USB drive from the scanner control panel without using a PC.



* Up to 30% recycled plastic is used in the production of the main unit, with the ratio depending on the availability of raw materials.
This percentage refers to the weight of recycled plastic used in the exterior parts, relative to the total plastic weight.
^ For DS-1760WN only.

The Epson WorkForce DS-1730/DS-1760WN A4 document scanner is a compact, versatile solution that streamlines workflows for both individuals and businesses, offering fuss-free connectivity, efficient digital storage, and the ability to scan a variety of media and documents.



Versatile Scanning Solution for Businesses

Fast and Efficient Scanning

The DS-1730/DS-1760WN offers fast scanning speeds of up to 30 ppm / 60 ipm, significantly enhancing office productivity. It also features a 60-sheet ADF, providing convenient and efficient scanning capabilities.



Simple and Intuitive Operation

Designed for effortless operation, the scanner features an intuitive 2.4" LCD touchscreen (DS-1760WN) and a one-pass duplex scan feature, enabling quick scans and streamlining workflows.



Versatile Media Scanning

The DS-1730/DS-1760WN offers flexible scanning options to suit a variety of business needs. The ADF is ideal for high-volume scanning of mixed-size documents, long paper, and originals ranging from 50–120 g/m² in thickness. For more delicate items such as photos, ID cards, booklets, or documents that cannot be fed through the ADF, the flatbed provides a reliable alternative.



Document Management

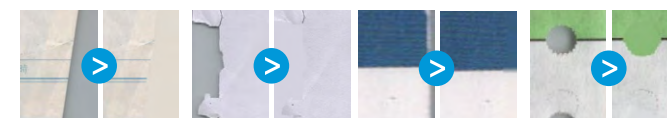
Epson Scan 2

Text Enhancement

Improves text recognition when scanning text documents, whether in colour, greyscale or black-and-white. Removes background for better clarity, making double-sided printed documents clearer.

Document Edge Corrections Only When Using ADF Scan

Correct and patch up missing edges or corners of the documents that are folded or torn with the colour of the original document. Punch holes can also be removed to enhance the overall aesthetics of the scanned image.



Folded edge

Paper tear

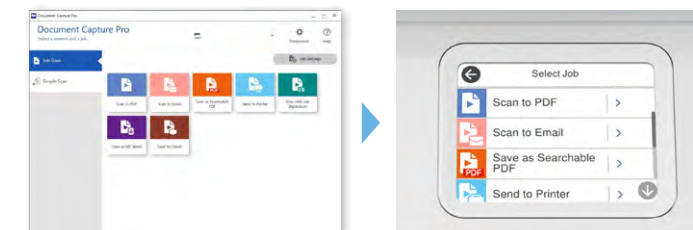
Border shadow

Punch hole

Document Capture Pro



Automate your scanning workflow with up to 30 customisable scan jobs and assign them to the device panel. Convert documents into searchable PDF files or editable Office documents with built-in OCR capability. Documents can be named and sorted into different folders conveniently by various job separation methods. You can also capture text and barcode information from documents including Machine Readable Zone (MRZ) of travel documents and output them as index data. Send your scanned image to a wide variety of destinations including cloud storage services.



Note: Limited functionality for Mac version of Document Capture software.

User-friendly Features

PC-less Operation with Scan-to Features DS-1760WN Only

Simplify your scan workflow by operating on the scanner control panel. Send scanned image directly to network folder, email, cloud service, or USB drive without the use of a computer. This also improves data security since no data is stored on the computer.

Image Sensor Glass Dirt Detection

Receive notification on the computer screen or LCD screen (DS-1760WN) upon detection of dirt on the glass surface inside the scanner. This reduces the risk of re-scanning due to poor image quality.



Free Stop Hinge

The free stop hinge allows the lid to be opened at an angle between 15 to 70 degrees without support, enhancing usability.

Automatic Cropping of Multiple Originals At Once

Effortlessly scan multiple items of different sizes simultaneously. The scanner driver automatically detects, crops, and saves each item as separate files or images to a designated folder, reducing the time spent on scanning tasks and enhancing productivity.

Continuous Scanning Using ADF and Scanner Glass

Scan different types of documents from both the ADF and the scanner glass in a single scan, and easily combine them into a single file. This feature enhances efficiency, offers flexibility in document handling, and ensures all your scanned images are conveniently stored together.

Lower Environmental Impact

The main body of the WorkForce DS-1730/1760WN is made with **up to 30%* recycled plastic**, while not compromising on the compact size and performance of the scanner. This makes it an environmentally friendly choice for businesses.

*Up to 30% recycled plastic is used in the production of the main unit, with the ratio depending on the availability of raw materials. This percentage refers to the weight of recycled plastic used in the exterior parts, relative to the total plastic weight.



SPECIFICATIONS

MODEL NUMBER	DS-1730	DS-1760WN
SKU Code	B11B273504	B11B274501
Scanner	A4 flatbed colour image scanner with ADF	
Scanner Type	Contact Image Sensor (CIS) x 2	
Sensor Type	Flatbed: Fixed document and moving carriage	
Scanning Method	ADF: Fixed carriage and moving document	
Light Source	RGB LED x 2	
Optical Resolution ^{*1}	Flatbed: 1,200 x 1,200 dpi	
Output Resolution	ADF: 600 x 600 dpi	
Bit Depth	50 – 1,200 dpi (in 1 dpi increments)	
Colour	30-bit input, 24-bit output	
Grayscale	10-bit input, 8-bit output	
Black & White	10-bit input, 1-bit output	
Document Size	ADF: 105 x 148 mm	
Minimum	Flatbed: 215.9 x 297 mm	
Maximum	ADF: 215.9 x 3,048 mm	Flatbed: 215.9 x 297 mm
Supported Paper Weight	ADF: 215.9 x 3,048 mm	
ADF Capacity	50 – 120 g/m ²	
Daily Scan Volume	60 sheets (80 g/m ²)	
Interface	Up to 3,000 sheets / day	
Scan to Destinations	USB 2.0	USB 2.0, Ethernet (1000BASE-T/100BASE-TX/10BASE-T), Wi-Fi (IEEE 802.11b/g/n), Wi-Fi Direct (max 8 connections), USB 2.0 Host Computer (Document Capture Pro), Network Folder/FTP, Email, USB Drive, Cloud (Epson Connect), Computer (WSD)
USB Host Function		
Type of Devices	–	Memory Devices
Function	–	Scan to Memory Device
File Format	–	JPEG, TIFF, Multi-TIFF, PDF, PDF/A
Scanning Speed ^{*2}		
Flatbed (A4, Colour/Monochrome)	300 dpi	7 sec
	600 dpi	15 sec
ADF (A4, Colour/Monochrome)	300 dpi	30 ppm / 60 ipm
	600 dpi	5 ppm / 10 ipm
Drivers and Softwares		
Supported OS (Scanner Driver)	Windows 7 / 8 / 8.1 / 10 / 11, Server 2008 / 2012 / 2016 / 2019 / 2022	
Windows	Mac OS X 10.9.5 or later, macOS 11 or later	
Mac	Apple AirPrint, Mopria, Chrome OS	
Driverless Solutions (DS-1760WN only)	TWAIN, SANE, WIA, ICA, ISIS	
Driver Compatibility	Epson Scan 2	
Bundled Software	ISIS Driver (Web Download)	
	Epson Scan OCR Component	
	Epson Scan PDF Extensions	
	Document Capture Pro (Windows)	
	Document Capture (Mac)	
Software Solutions Compatibility	Epson Device Admin	
	Epson Smart Panel (DS-1760WN only)	
File Format	Epson Scan 2: JPEG, TIFF, Multi-TIFF, PDF, Searchable PDF, BMP, PNG	
	Document Capture Pro (Windows): JPEG, JPEG2000, BMP, PDF, Searchable PDF, TIFF, Multi-TIFF, PNG, DOCX, XLSX, PPTX	
Control Panel		
LCD Screen	–	2.4" LCD Touchscreen
Electrical Specifications		
Rated Voltage	AC 220 – 240 V	
Rated Frequency	50 – 60 Hz	
Power Consumption		
Operating	9.0 W	10.0 W (USB), 11.0 W (Wi-Fi/Ethernet)
Ready Mode	3.8 W	4.7 W (USB/Wi-Fi), 4.6 W (Ethernet)
Sleep Mode	0.9 W	1.0 W (USB), 1.3 W (Wi-Fi), 1.1 W (Ethernet)
Power Off	0.1 W	0.1 W
Environmental Conditions		
Temperature		
Operating	5 – 35 °C	
Storage	-25 – 60 °C	
Humidity		
Operating	15 – 80 % (No condensation)	
Storage	15 – 85 % (No condensation)	
Options and Consumables		
Cleaning Kit	Order Code B12B819291	

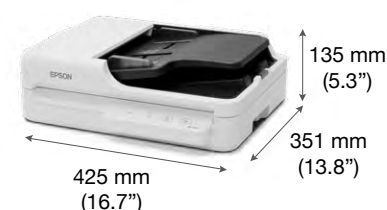
^{*1} Scanning resolution as defined by ISO14473.

^{*2} Based on A4 size documents.

Dimensions & Weight

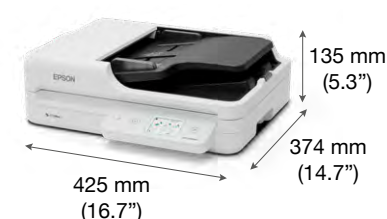
DS-1730

Weight: 4.8 kg (10.6 lb)



DS-1760WN

Weight: 4.9 kg (10.8 lb)



What's in the box:

- Scanner Main Unit
- USB 2.0 Cable
- Power Cable
- Setup Guide
- Warranty Card

©2025 Epson Singapore Pte Ltd. All Rights Reserved. Reproduction in part or in whole, without the written permission from Epson, is strictly prohibited.

EPSON is a registered trademark of Seiko Epson Corporation.

All other product and company names used herein are for identification purposes only and are the trademarks or registered trademarks of their respective owners.

Epson disclaims any and all rights in those marks. Projected images shown herein are simulations. The actual product design and contents may vary. Specifications are subject to change without notice and may vary between countries. Please check with local Epson offices for more information.

Dealer's Stamp

Information correct at time of printing.
Printed May 2025

Find out more at www.epson.com.sg/scanners

epsonsg EpsonSingapore EpsonSoutheastAsia Epson Singapore epsongsingapore

Epson Singapore Pte Ltd
Epson Authorised Service Centre

438B Alexandra Road, Block B Alexandra Technopark, #04-01/04, Singapore 119968. Tel: (65) 6586-5500
6 Harper Road, #04-01 Leong Huat Building, Singapore 369674. Epson Helpdesk: 800-120-5564. Please refer to www.epson.com.sg/contact for opening hours.