

# EMPOWERING BUSINESSES WITH EXCEPTIONAL PERFORMANCE



The WorkForce DS-730N simplifies and enhances business workflow with higher scan speed performance and easier access to scan settings through the 1.44" LCD display. Users can scan to Network folder, email or send scan data to target destination without the use of a PC. In addition, the image sensor glass dirt detection reduces re-scanning due to bad image quality, improving workflow.



Speeds of  
up to 80 ipm



Colour  
LCD



One-Pass  
Duplex  
Scanning



Ethernet



USB 2.0  
Bus-powered

## ENGINEERED FOR good

### Built for Business

Enjoy scan speed of up to 80 ipm, daily duty cycle of 6,500 sheets and ADF capacity of 100 sheets to enhance business productivity.

### Efficient Scanning

Work becomes seamless with easy access to scan settings on the 1.44" LCD display. Scan to Network folder, email or SharePoint with the Quick Send Button easily.

### Exceptional Reliability

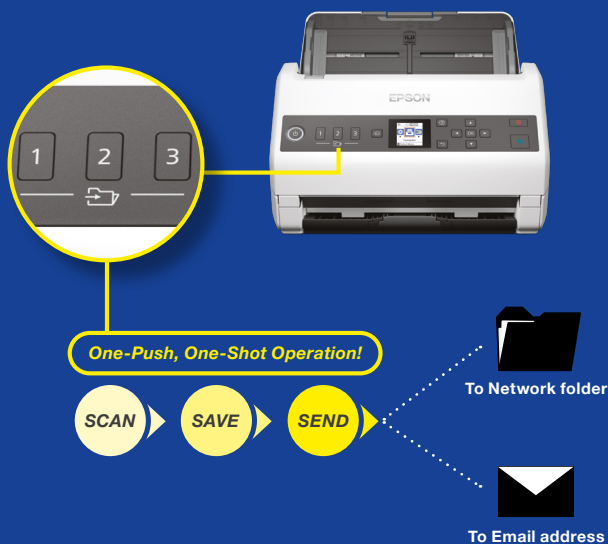
Expect quality scans with the image sensor glass dirt detection and prevent damage to your important documents with the paper protection feature.



Equipped with the Scan-to function, users can send scan data to target destination without the use of a PC. With the one-push Quick send button, users can scan-save-send easily to ease workflow. In addition, the image sensor glass dirt detection helps detect, notify and reduce the hassle of re-scanning.

## Scan-to Function

With the convenience of the Scan-to function, users only require the one-push, one-shot operation of the quick send button to send scan data directly to target destination, without the use of a PC.



## Scanner Features

### Durable, High-speed Scanning

Expect fast, high-volume scanning speeds of up to 40 ppm/80 ipm on the DS-730N. With a 100-sheet Automatic Document Feeder for A4 media and high daily output cycle of up to 6,500 pages, this business scanner suits your need.

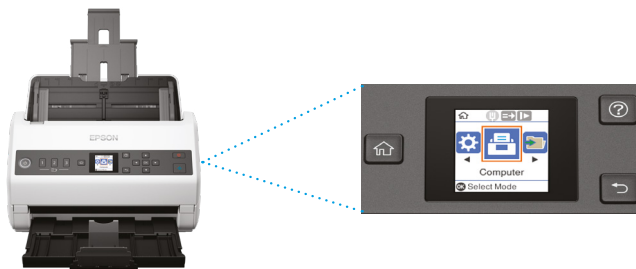
### Compact Size

For better mobility and reduced footprint, the DS-730N can be kept in storage position after use.



### 1.44" Colour LCD

Enjoy a clear display of job contents with the 1.44" LCD display. Access the scanner using push scan functions and change scan settings directly on the panel without having to use a PC.



DS-730N

1.44" Colour LCD

### High Quality Image

Equipped with built-in function to improve colour production, the scanner can remove crease marks, reduce bleed through and even select background colour based on paper type used.

### Automatic Size Recognition

Place documents of different sizes up to A4 in the middle of the feeding tray and the DS-730N will automatically detect and scan everything in the correct size, all in a single batch.



## Epson Scan 2

### Text Enhancement

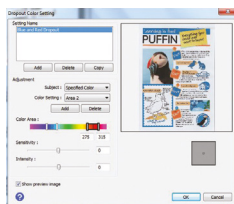
Improves text recognition when scanning text documents, whether in colour, greyscale or black-and-white. Removes background for better clarity, making double-sided printed documents clearer.

### Document Skew Correction

Automatically adjusts and straightens scanned images.

### Colour Enhancement & Colour Dropout

Remove or enhance the visibility of ink signatures such as "Confidential" and "Urgent" stamps. Users can pick one of the preset colours (red, green, blue, pink, purple, yellow, orange, or all other colours except black), or use the customised settings to dropout or enhance up to 5 colours with a single scan. Up to 10 colours can be preset for reuse.



### PDF Features for Added Convenience

The built-in OCR enables searchable PDF files. Secure your PDF files by setting a password to prevent unauthorised viewing, editing or printing.

### Epson ScanWay –

#### Easy and Fuss-Free Data Sharing

ScanWay supports network sharing functions, as well as stand-alone operation without needing to connect to a PC. Epson's ScanWay models provide simple, reliable, and secure scanning solutions for scanner operators and administrators.

With DS-730N:

- Scan documents straight to Network folders and E-mail.
- Facilitate more efficient scan workflow using Quick send buttons.



## User-Friendly Feature

### Paper Protection Function

Upon detection of abnormal paper feeding or stapled/folded paper, scanner will automatically stop to prevent damage to important documents.

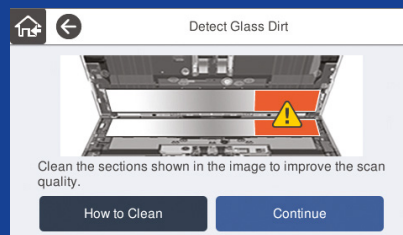
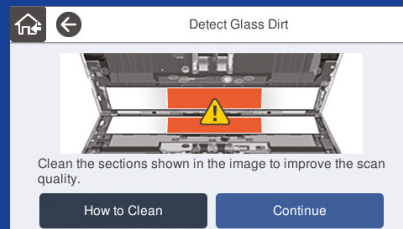


Competitor

Epson

## Image Sensor Glass Dirt Detection

A notification will be sent upon detection of dirt in three areas before scanning. This reduces the risk of re-scanning due to bad image quality, improves the Scan-to workflow and increases business productivity.



## Document Management

### Document Capture PRO\*

Scan, view, edit, save and transfer scanned documents easily with the Document Capture PRO, which easily recognises barcodes, characters and blank pages in scanned documents for batch separation, allowing you to create up to 30 customised settings. Simplify scan workflow with assigned shortcuts to the scanner's operation panel. With built-in OCR capability, searchable PDF files can be created and documents saved into editable Microsoft Office formats. Assign passwords to protect devices and documents through the Advanced Log function.



\*Limited functionality for Mac version of Document Capture software.

## SPECIFICATIONS

<b>Model Number</b>	<b>DS-730N</b>	
<b>Scanner</b>		
Scanner Type	Sheet-fed, one pass duplex colour scanner	
Sensor Type	Colour Contact Image Sensor (CIS) x 2	
Scanning Method	Fixed carriage and moving document	
Light Source	RGB LED x 2	
Optical Resolution <sup>1</sup>	600 x 600 dpi	
Output Resolution	50 - 1,200 dpi (in 1 dpi increments)	
Bit Depth		
Colour	30-bit input, 24-bit output	
Greyscale	10-bit input, 8-bit output	
Black & White	10-bit input, 1-bit output	
Document Size		
Minimum	50.8 x 50.8 mm	
Maximum	215.9 x 6096 mm	
Supported Paper Weight	27 - 413 g/m <sup>2</sup>	
ADF Capacity	100 sheets (80 g/m <sup>2</sup> )	
Daily Scan Volume	Up to 6,500 sheets / day	
Multi-feed Detection	Ultrasonic Sensor and Length Detection	
Interface	USB2.0 and Ethernet (100BASE-T/100BASE-TX/10BASE-T)	
Scan-to Destination	Folder, Email, FTP/SFTP, SharePoint	
<b>Scanning Speed<sup>2</sup></b>		
Resolution (A4, Colour/Monochrome)		
300 dpi	40 ppm / 80 ipm	
600 dpi	12 ppm / 24 ipm	
<b>Drivers and Software</b>		
Supported OS (Scanner Driver)		
Windows	Windows XP SP3 / Vista / 7 / 8 / 8.1 / 10 / Server 2003 / Server 2008 / Server 2012 / Server 2016 / Server 2019	
Mac	Mac OS X 10.6.8 or later	
Driver Compatibility	TWAIN, SANE, WIA, ICA, ISIS	
Software Bundle	Epson Scan 2 Epson Scan OCR Component Epson Scan PDF Extensions Document Capture Pro (Windows) Document Capture (Mac)	
Software Solutions Compatibility	Document Capture Pro Server Epson Device Admin	
File Format	Standalone: JPEG, PDF, PDF/A, TIFF, Multi-TIFF Epson Scan 2: JPEG, TIFF, Multi-TIFF, PDF, Searchable PDF, BMP, PNG Document Capture Pro: JPEG, JPEG2000, BMP, PDF, Searchable PDF, TIFF, Multi-TIFF, PNG, DOCX, XLSX, PPTX <sup>3</sup>	
<b>Control Panel</b>		
LCD Screen	1.44" LCD	
<b>Electrical Specifications</b>		
Rated Voltage	AC 100 - 240 V	
Rated Frequency	50 - 60 Hz	
Power Consumption		
Operating	13W (USB) / 14W (Ethernet)	
Ready Mode	5.9W	
Sleep Mode	1.2W (USB) / 1.5W (Ethernet)	
Power Off	0.1W	
<b>Environmental Conditions</b>		
Temperature		
Operating	5 - 35 °C	
Storage	-25 - 60 °C	
Humidity		
Operating	15 - 80 % (No condensation)	
Storage	15 - 85 % (No condensation)	
<b>Options &amp; Consumables</b>		
	<b>Durability</b>	<b>Order Code</b>
Roller Assembly Kit	200,000 scans	B12B819671
Carrier Sheet	3,000 scans	B12B819051
Cleaning Kit	-	B12B819291

\*1 Scanning resolution as defined by ISO14473.

\*2 Based on A4 documents.

\*3 PPTX for Windows version only.

### Dimensions & Weight

**DS-730N**

**Weight:** 3.6kg



### What's in the box:

- Scanner Main unit
- USB 2.0 Cable
- AC Adapter
- Power Cable
- Software CD
- Setup Guide

©2024 Epson Singapore Pte Ltd. All Rights Reserved.  
Reproduction in part or in whole, without the written permission from Epson, is strictly prohibited.

EPSON is a registered trademark of Seiko Epson Corporation.

All other product and company names used herein are for identification purposes only and are the trademarks or registered trademarks of their respective owners.

Epson disclaims any and all rights in those marks. Projected images shown herein are simulations. The actual product design and contents may vary. Specifications are subject to change without notice and may vary between countries. Please check with local Epson offices for more information.

Dealer's Stamp

Information correct at time of printing  
Printed March 2024

Find out more at [www.epson.com.sg/scanner](http://www.epson.com.sg/scanner)

EpsonSingapore EpsonSingapore EpsonSoutheastAsia Epson Singapore EpsonSingapore

**Epson Singapore Pte Ltd**  
**Epson Customer Care Center**

438B Alexandra Road, Block B Alexandra Technopark, #04-01/04, Singapore 119968. Tel: (65) 6586-5500  
100G Pasir Panjang Road, #01-09 Interlocal Centre, Singapore 118523. Epson Helpdesk: 800 120 5564. Please refer to [www.epson.com.sg/contact](http://www.epson.com.sg/contact) for opening hours.