

THE BIG SCREEN EXPERIENCE.

Prepare to be blown away by Epson EpiqVision Ultra Laser Projection TV series. Whether you are indulging in your favourite blockbuster, immersed in live sports, or conquering the gaming world, Epson Ultra Laser Projection TV unleashes an epic, jaw-dropping big-screen adventure that will leave you absolutely spellbound.

ENGINEERED FOR good

EPSON

EXCEPTIONAL CONTRAST

Mesmerising projections with lifelike contrast are made possible with the powerful >2,500,000:1 contrast ratio on Epson's EpiqVision Ultra Laser Projection TV. Equipped with 4,000-lumen brightness that brings out vivid colours and deep blacks even in well-lit spaces, sit back and enjoy the high-dynamic images coming to life, thanks to the incredible HDR10 decoding process.

EpiqVision Ultra 4K PRO-UHD⁺

4,000 lumens
High Brightness



More than
2,500,000:1
Contrast Ratio





WORLD'S SHORTEST THROW*

Upgrade your home theatre experience with our revolutionary EpiqVision Ultra Laser Projection TV. With its astonishing ultra-short throw capability of an incredible 0.16 throw ratio, this powerhouse projector can effortlessly transform any wall into a massive 120-inch^ screen, displaying sharp and vibrant images that will leave you in awe. Its sleek design seamlessly blends with your space's aesthetic, ensuring a perfect fit for your home.

*For EH-LS800B. As of December 2022. Limited to products which disclose throw ratio officially and have over 2,000lm in accordance with ISO21118.

^Supports up to 150 inches.

PICTURE PERFECT IN EVERY SCENE

Effortlessly projecting a massive 120-inch* display without compromising on picture quality, all these are made possible with cutting-edge 3LCD technology built into EpiqVision Ultra Laser Projection TVs. Breaking image size constraints, these projectors also feature a new vivid color mode and scene adaptive gamma correction, adjusting the gamma levels of an image automatically and delivering visually perfect images in alluring colors and brightness.

*Supports up to 150 inches.



◀ Scene Adaptive Gamma Correction

▶ New Vivid Colour Mode



Images are for illustration purposes only.

AUDIOPHILE SOUND QUALITY

Dive into an immersive auditory experience like never before, courtesy of our cutting-edge 3D surround technology enhanced by YAMAHA's exclusive DSP processing innovation – AudioEngine™. Discover the epitome of audio excellence regardless of whether it is crystal-clear acoustic melodies or indulging in the deepest bass-driven beats. Be enveloped in the realm of astonishingly powerful sound quality that redefines your listening pleasure.

sound by  **YAMAHA**

Music mode based on the content you are playing:



STUDIO
For Music



STADIUM
For Sports



CONCERT
For Live Music



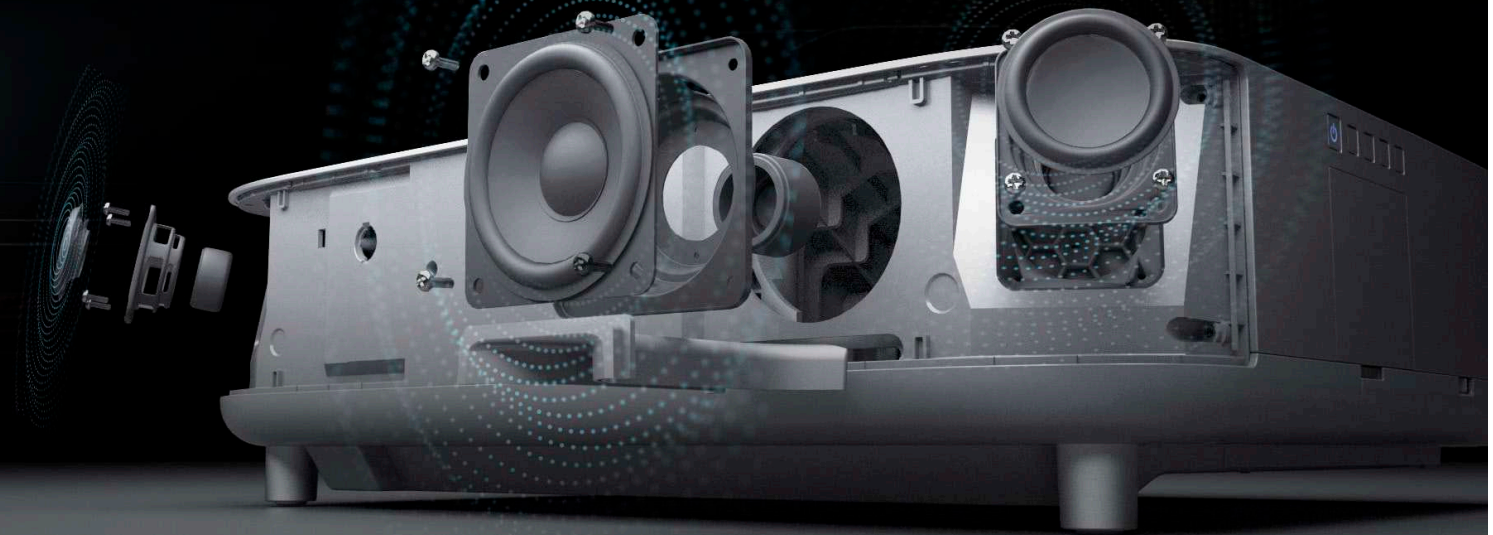
KARAOKE
For Singing



TV For
Broadcasting



THEATRE
For Movie



GATEWAY TO AN ENTERTAINMENT HUB

Seamlessly access all your favourite apps and games directly on your projector thanks to the EpiqVision Ultra Laser Projection TV's Google Play and Android TV™ integration. Transforming your viewing experience into a cinematic adventure, relax and indulge in binge-watching your beloved dramas and blockbusters from platforms like YouTube, and Disney+. Elevate your entertainment game and immerse yourself in the future of home theatre!

androidtv



*Google, Google Home, Chromecast built-in™, Android TV™ and other related marks and logos are trademarks of Google LLC. Chromecast is available for iOS or Android devices, Mac or Windows computer or Chromebook. Available for selected models. Voice control is applicable to Android TV™ only.

SMART INSTALLATION SET-UP



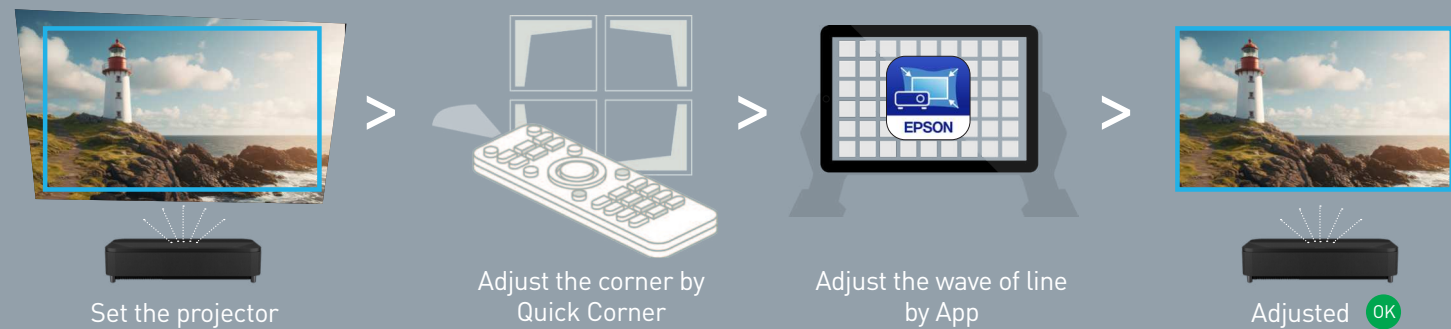
Epson Setting Assistant App

Save on set-up time with the Epson Setting Assistant app. Correct the shape of projected image automatically just by taking photo with your smart device's camera, the app detects and corrects distortion in the projected image and adjusts its shape to match the screen.

With **SCREENFIT** function*



Without **SCREENFIT** function*



*If you set the projector without screen, you need to adjust the projected display's shape to square manually. The Epson Setting Assistant App helps straighten the line.

PORTABLE, FLEXIBLE AND ALL-IN-ONE

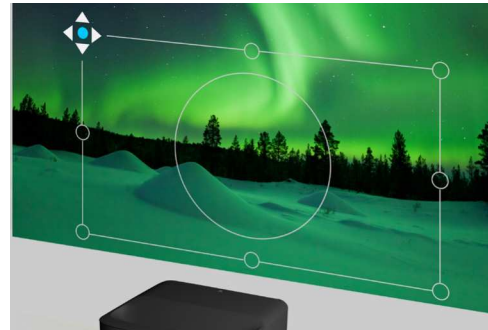
The EpiqVision Ultra Laser Projection TV is easy to install and bring around. Weighing up to 12.3kg, transportation in your home or even to a party is made much easier, all thanks to the compact body size. The projector's automatic light output adjustment, flexible picture settings, and color temperature optimization are tailored to your preferences, ensuring an immersive viewing experience like no other.





Laser light motion sensor

The motion sensor is a safety feature that automatically turns off the laser light source when anyone gets too close to the projector's light source, making the EpiqVision Ultra Laser Projection TV safe to use.



Fuss-free set up

Enjoy easy set up using the built-in 8-point corner adjustment function, correcting the screen arc along with keystone and curved surface correction.



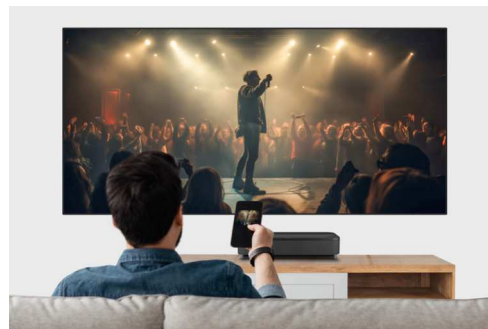
Bluetooth speaker mode

Simply connect your smart devices via Bluetooth to the EpiqVision Ultra Laser Projection TV and begin playing rich sounds with a simple tap on the device.



Voice control

Google voice assistant-ready, control your viewing easily via voice commands. Now you can enjoy movies or plan your day, and even control your home appliances from the comfort of the sofa.



Chromecast Integration

Conveniently cast any content from your smartphone or tablet to the EpiqVision Ultra Laser Projection TV with the built-in Chromecast app.



More than 10 years of entertainment

With 20,000 hours² of laser light source life and a 12,000-hour filter maintenance cycle, you can now enjoy more than 10 years of entertainment¹ on your EpiqVision Ultra Laser Projection TV.



¹ 10 years calculated based on 5 hours usage per day.

² No required maintenance for the light source for up to 20,000 hours. Approximate time until brightness decreases 50% from first usage. Measured by acceleration test assuming use of 0.04 - 0.20 mg/m³ of particulate matter. Time varies depending on usage conditions and environment. Replacement of parts other than the light source may be required in a shorter period.

MAGIC OF CINEMA RIGHT AT HOME

Experience the magic of cinema from the comfort of your own home, courtesy of our Ambient Light Rejection (ALR) screens – the ELPSC35 and ELPSC36. Dive into the world of 4K content and be spellbound by the stunningly vibrant and lifelike images on these ambient light-rejecting screens. With improved contrasts and deeper blacks, meticulously enhanced to elevate your viewing pleasure, embark on a cinematic journey that brings the theatre experience right into your living room.

Epson 120" ALR Screen (ELPSC36)



HOW IT WORKS

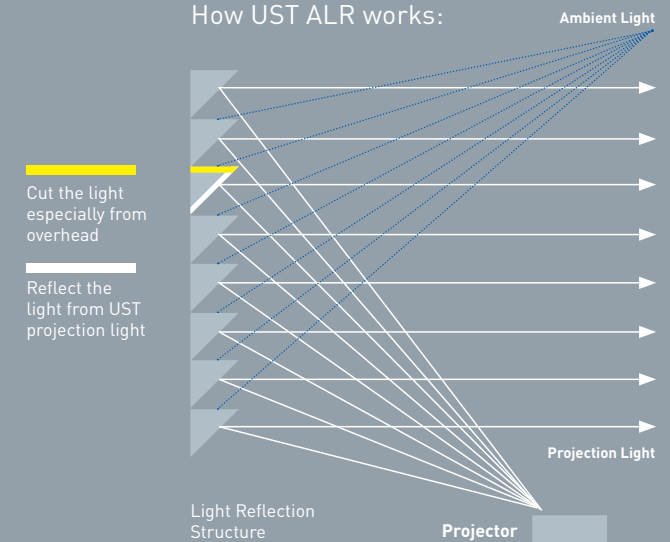
Filtering out 90% of ambient light, the screen's optical surface gives the viewer a Laser TV-like viewing experience with optimal brightness in both well-lit and dark environments.

Project up to

100-inch ELPSC35

120-inch ELPSC36

How UST ALR works:



Disclaimer: ALR screen only works with ultra-short throw projectors.

	PRODUCT MODEL			EpiqVision Ultra EH-LS800B
	PROJECTION TECHNOLOGY			RGB liquid crystal shutter projection system (3LCD)
	SPECIFICATIONS OF MAIN PARTS			
	LCD	SIZE		0.62 inch (C ² Fine)
		NATIVE RESOLUTION		1080P (4KE)
	PROJECTION LENS	TYPE		No optical zoom / Focus: manual
		F-NUMBER		1.8
		FOCAL LENGTH		2.3 mm
		THROW RATIO (WIDE TO TELE)		0.16 – 0.40
		ASPECT RATIO		16:9
	LIGHT SOURCE	TYPE		Laser diode
		LIFE (NORMAL / EXTENDED)		20,000 hours
	SCREEN SIZE (PROJECTED DISTANCE)		WIDE	80" to 150" [28 cm to 54 cm]
			TELE	32" to 60" [28 cm to 54 cm]
	BRIGHTNESS	WHITE LIGHT OUTPUT (NORMAL / ECO)		4,000 lm / 2,000 lm
		COLOR LIGHT OUTPUT		4,000 lm
	DYNAMIC CONTRAST RATIO			Over 2,500,000:1
	INTERNAL SPEAKER(S)	SOUND OUTPUT		YAMAHA 2.1ch Satellite x2, Woofer x1, 20W
	GEOMETRIC CORRECTION	QUICK CORNER		Yes
		PROJECTION ORIENTATION		Desktop
	CONNECTIVITY	DIGITAL INPUT	HDMI	3 (HDCP 2.3)
		AUDIO OUT		Yes (Bluetooth, Stereo Mini x1, S/PDIF x 1)
		USB I/O	TYPE A	3 (For USB storage, RJ45, camera, mic, HID)*
			MINI-B	1 (For firmware update)
		WIRELESS LAN	BUILT-IN	Yes (Smart media player function)
	DIMENSIONS (D X W X H)	EXCLUDING FEET		341 x 695 x 145 mm
	POWER CONSUMPTION	220 – 240V (NORMAL / QUIET, EXTENDED)		335W / 210W
	FAN NOISE	DECIBEL (NORMAL / ECO)		32dB / 19dB
	WEIGHT			Approx. 12.3 kg

WHAT'S IN THE BOX

Quick Start Guide • Remote Control with 2xAAA battery • 1.8m Power Cable (Black or White) • Warranty Card

*USB3 is for 5V/2A Power Supply, No USB Function.



EpiqVision Ultra

androidtv

sound by YAMAHA

©2025 Epson Malaysia Sdn. Bhd. All Rights Reserved. Reproduction in part or in whole, without the written permission from Epson, is strictly prohibited.

EPSON is a registered trademark of Seiko Epson Corporation.

All other product names and other company names used herein are for identification purposes only and are the trademarks or registered trademarks of their respective owners.

Epson disclaims any and all rights in those marks. Projected images shown herein are simulations. The actual product design and contents may vary. Specifications are subject to change without notice and may vary between countries. Please check with local Epson offices for more information.

Apple, iPad and iPhone are trademarks of Apple Inc., registered in the U.S. and other countries. App Store is a service mark of Apple Inc.

Android is a trademark of Google Inc.

Google Play and the Google Play logo are trademarks of Google LLC.

Dealer's Stamp

Information correct at time of printing.
Printed April 2025

Epson Malaysia

Epson Customer Care Center

Epson Malaysia Sdn. Bhd. 3rd Floor, East Tower, Wisma Consplant 1, No2, Jalan SS 16/4, 47500 Subang Jaya.
Tel: 603-56 288 288 vz Fax: 603-56 288 399

Toll-free line 1800-8-17349 Accessible 09:00am to 06:00pm, Mon - Fri (Except public holiday) Brunei Customers,
Please call: -03-56 288 288 Ext 351/353 Accessible 09:00am to 06:00pm, Mon - Fri (Except public holiday)



Find out more at www.epson.com.my/projectors or call **1800-81-7349**