

LIFESTUDIO GRAND

SETTING A NEW STANDARD IN PROJECTION AND SOUND.

Lifestudio Grand EH-LS670B



Lifestudio Grand Plus EH-LS970B



SEE
ULTRA

Redefine your living space with the Epson Lifestudio Grand AI Laser Projection TV. From the roar of the stadium to the silent intensity of a cinematic masterpiece, these AI-powered Ultra-Short-Throw laser projectors transform any wall into a window to another world. Don't just watch, experience every detail in breathtaking scale.

EPSON

Google TV

SOUND BY
BOSE

Big-Screen Cinema, Anywhere

Designed for effortless home entertainment, the Epson Lifestudio Grand AI Laser Projection TV features a compact, all-in-one design that's easy to set up and move around your home. Intelligent automatic image adjustments and flexible picture settings optimise the viewing experience to suit your space and preferences, delivering immersive big-screen enjoyment wherever you choose to watch.



Exceptional Quality

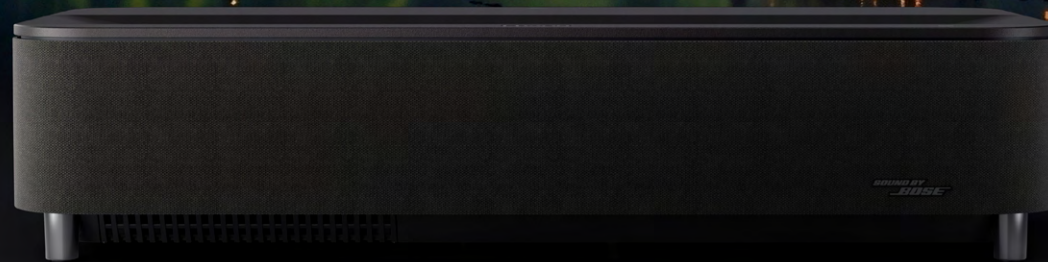
Immerse yourself in mesmerising visuals with Epson's Lifestudio Grand AI Laser Projection TV. A remarkable >5,000,000:1 contrast ratio combined with up to 4,000 lumens* of brightness delivers vivid colours and deep blacks, even in well-lit spaces. 4K resolution ensures every scene is presented with stunning clarity and fine detail, while HDR10 decoding enhances contrast and depth for truly lifelike images.



Up to **4,000** lumens
white and colour brightness**



More than
5,000,000:1
Contrast Ratio



* For EH-LS970B. Up to 3,600lm for EH-LS670B.

** Colour light output measured in accordance with IDMS 15.4; white light output measured in accordance with ISO 21118.

Big Screen. Short Distance

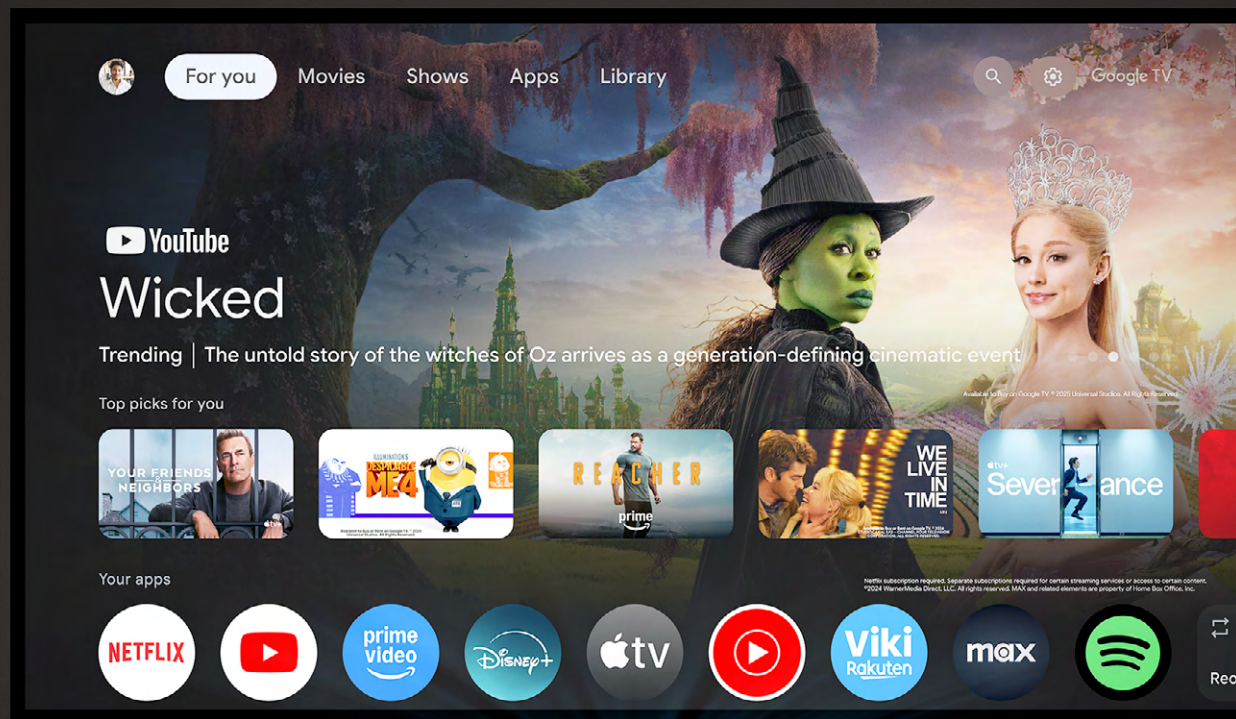
Upgrade your home theatre with the Lifestudio Grand AI Laser Projection TV. With an incredible 0.16 ultra-short throw ratio*, it projects a stunning screen up to 120*** from just inches away. Experience sharp, vibrant visuals and immersive big-screen entertainment, all housed in a sleek design that complements any modern living space.

*For EH-LS970B only. **EH-LS970B supports up to 150 inches.



Smart Entertainment at Your Fingertips

Seamlessly access your favourite apps and games with built-in Google TV™. Stream from popular platforms like Netflix, Disney+, YouTube and more — all through a simple, intuitive interface. Enjoy your favourite shows and movies on a breathtaking big screen, transforming everyday viewing into a truly cinematic experience.



Google TV is a trademark of Google LLC.



Sound That Surrounds You

**SOUND BY
BOSE**

Feel every moment with immersive audio. The custom-tuned stereo system delivers room-filling sound with deep, punchy bass. When the projector is not in use,

Bluetooth Speaker Mode lets it function as a standalone audio system, delivering rich, powerful sound through expertly tuned built-in Bose speakers.



Sound by Bose is a trademark of Bose Corporation, used under license by Epson.

Next-generation AI Image Processing

Powered by a new TV chip, next-generation image processing enhances every frame with five powerful features:

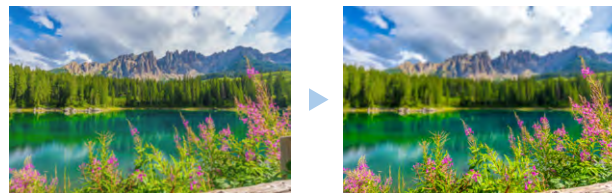
AI Super Resolution

Enhances sharpness using AI-based image analysis to refine details and improve overall image clarity



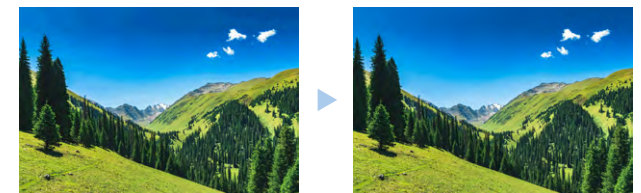
AI Picture Quality

Analyses each scene in real time and automatically applies optimal picture adjustments using AI trained on an extensive image database.



De-contour

Reduces colour banding in gradient areas to produce smoother transitions and more natural image quality.



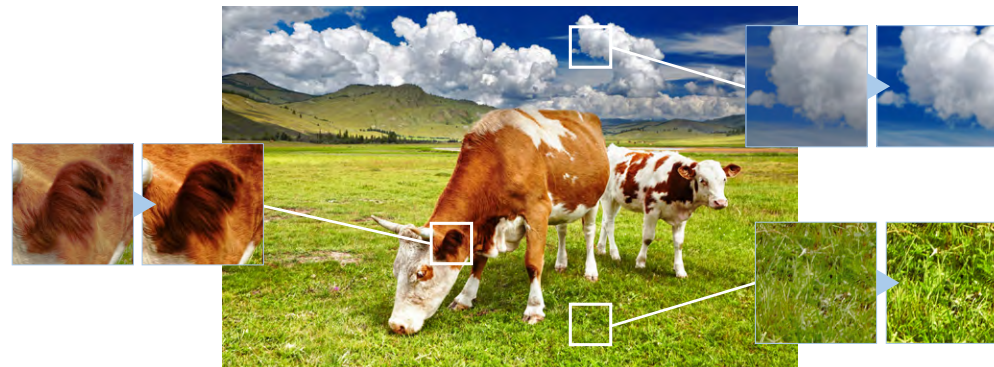
Dynamic Colour Booster

Automatically adjusts colour saturation scene by scene to deliver richer, more vibrant visuals.



Local Contrast

Adaptive gamma processing divides the image into smaller zones, enhancing contrast in each area for greater depth and detail.

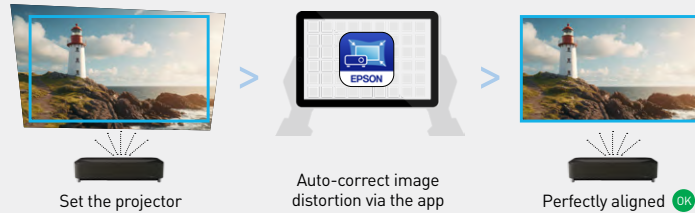


Effortless Setup, Endless Creativity

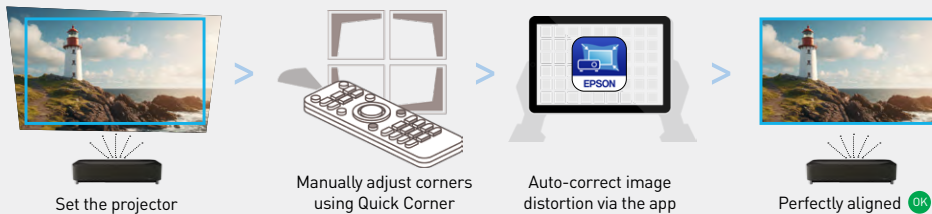
Get started in moments with Smart Installation Setup via the **Epson Setting Assistant app**. Simply select a photo from your device and distortions are automatically corrected to align perfectly with your screen – no manual adjustments required. Then take your entertainment further with the **Epson Projection Studio app**, where you can create and share personalised videos on the big screen for immersive, captivating experiences.

EPSON SETTING ASSISTANT APP

ON With **SCREEN FIT** function*

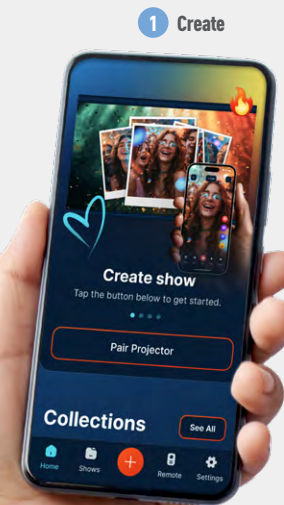


OFF Without **SCREEN FIT** function*

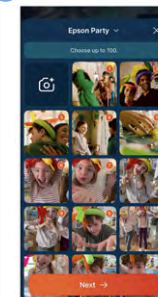


* When projecting without a screen, the image may appear distorted and require manual adjustment. The Epson Setting Assistant app automatically straightens the image for a perfectly aligned display.

EPSON PROJECTION STUDIO APP

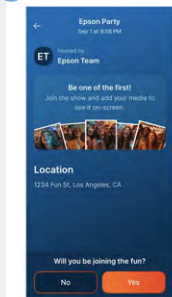


2



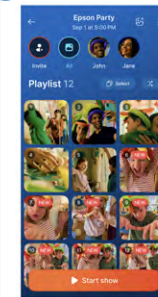
Upload

3



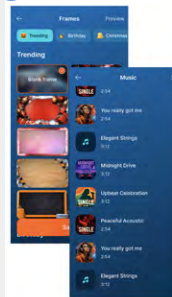
Invite

4



Organise

5

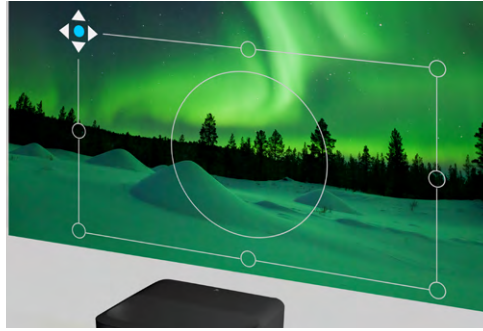


Theme



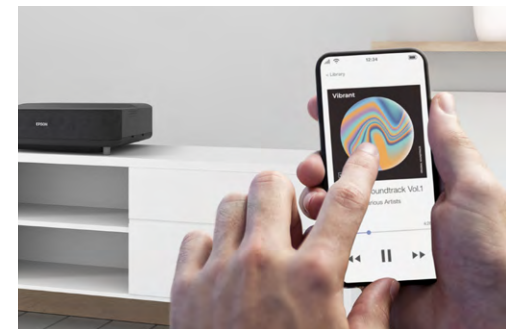
Laser Light Motion Sensor

A built-in motion sensor automatically turns off the laser light source when someone gets too close, helping ensure safer operation.



Fuss-Free Setup

Enjoy easy setup with the built-in 8-point corner adjustment, along with keystone and curved surface correction for precise image alignment.



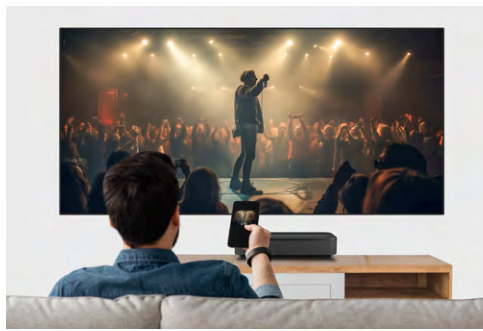
Bluetooth Speaker Mode

Simply connect your smart device via Bluetooth and enjoy rich, immersive sound with a single tap.



Voice Control

Google Assistant-ready, easily control your viewing with voice commands.



Chromecast Integration

Cast your favorite apps and media from any smartphone or tablet directly to the projector with Chromecast built-in.



More Than 10 Years of Entertainment

Enjoy over 10 years¹ of entertainment with the Epson Lifestudio Grand AI Laser Projection TV, thanks to its 20,000-hour laser light source and maintenance-free² design.



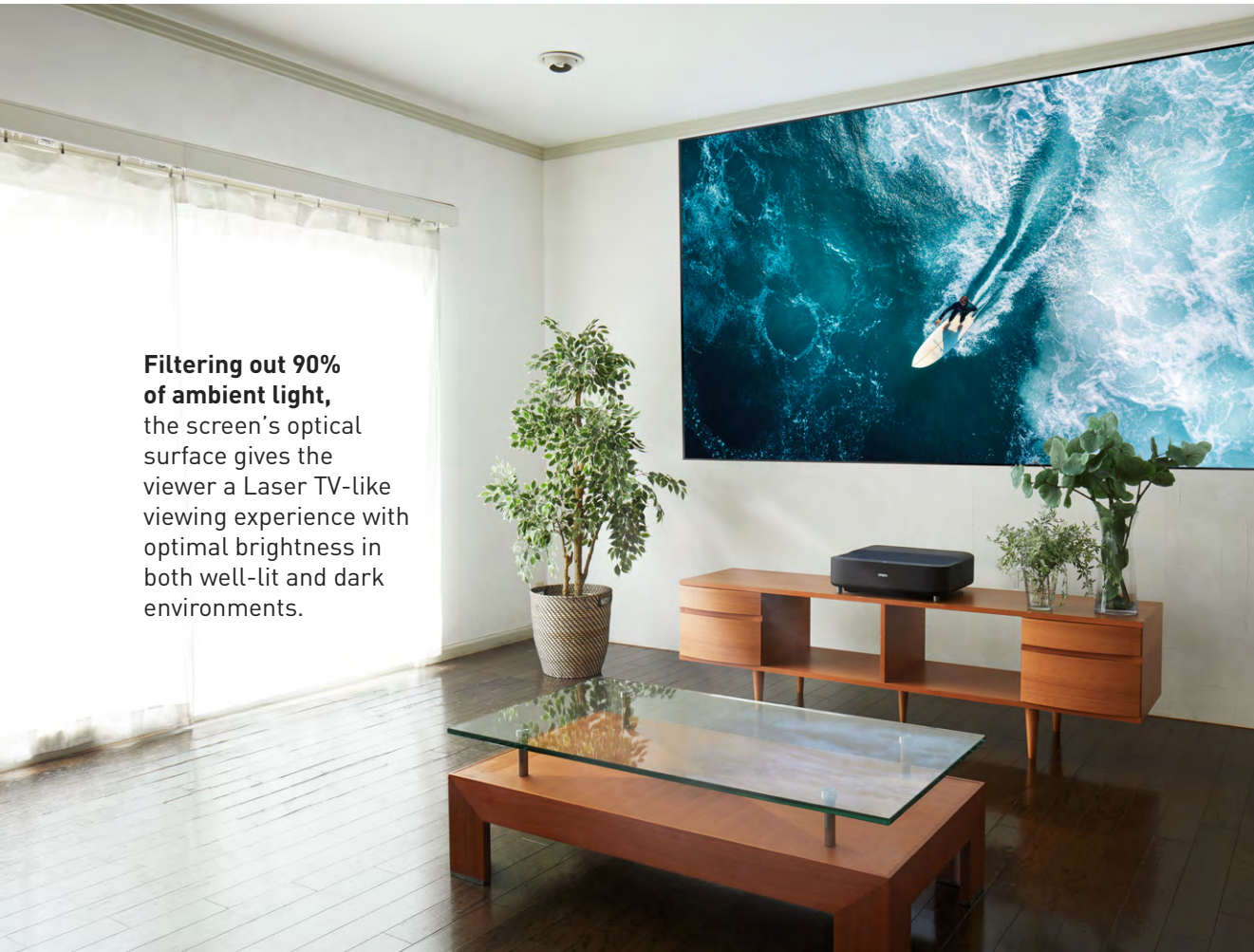
¹ 10 years calculated based on 5 hours usage per day.

² No required maintenance for the light source for up to 20,000 hours. Approximate time until brightness decreases 50% from first usage. Measured by acceleration test assuming use of 0.04 - 0.20 mg/m³ of particulate matter. Time varies depending on usage conditions and environment. Replacement of parts other than the light source may be required in a shorter period.

Magic of Cinema Right at Home

Bring the magic of cinema home with our Ambient Light Rejection (ALR) screens – ELPSC35 and ELPSC36. Enjoy stunning 4K content with vibrant, lifelike images, deeper blacks, and enhanced contrast that make every scene come alive. Experience theatre-quality viewing right in your living room.

Filtering out 90% of ambient light, the screen's optical surface gives the viewer a Laser TV-like viewing experience with optimal brightness in both well-lit and dark environments.



Project up to

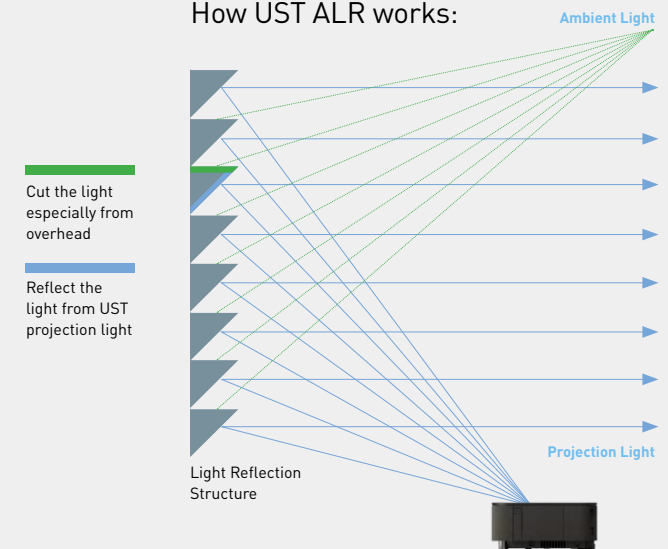
100"

ELPSC35

120"

ELPSC36

How UST ALR works:



Disclaimer: ALR screens only work with ultra-short throw projectors. ALR Screens are sold separately.

PRODUCT MODEL			LIFESTUDIO GRAND EH-LS670B
PROJECTION TECHNOLOGY			RGB liquid crystal shutter projection system (3LCD)
SPECIFICATIONS OF MAIN PARTS			
LCD	SIZE		0.62 inch
	NATIVE RESOLUTION		1080P (Full HD)
RESOLUTION ON-SCREEN (MAXIMUM)	RESOLUTION		4K PRO-UHD ¹
	PIXEL NUMBER		4.2M Dots (1920 x 1080 x 2)
PROJECTION LENS	TYPE		No optical zoom / Focus: manual
	F-NUMBER		1.6
	FOCAL LENGTH		3.7 mm
	THROW RATIO (WIDE TO TELE)		0.25 – 0.62 (Digital Zoom)
LIGHT SOURCE	TYPE		Laser diode
	LIFE (NORMAL / LOW ²)		20,000 / 20,000 hours
SCREEN SIZE (PROJECTED DISTANCE)			60" to 120" [32.5cm to 70.3cm] @ 16:9
BRIGHTNESS³	COLOUR LIGHT OUTPUT		3,600 lm
	WHITE LIGHT OUTPUT (NORMAL / ECO)		3,600 lm / 1,800 lm
CONTRAST RATIO			Over 5,000,000:1
INTERNAL SPEAKER(S)	SOUND OUTPUT		Sound by Bose 2.1ch Satellite x2, Woofer x1 (20W)
GEOMETRIC CORRECTION	POINT CORRECTION		Yes
	QUICK CORNER		Yes
CONNECTIVITY	DIGITAL INPUT	HDMI	3 (SMF, HDMI2=eARC, HDCP2.3)
	AUDIO OUT		1 (Headphone), 1 (S/PDIF)
	USB I/O	TYPE A	2
		TYPE B	1
	WIRELESS LAN		Built-in (Smart Media Player)
DIMENSIONS (W X D X H)	EXCLUDING FEET		467 x 400 x 133 mm
POWER CONSUMPTION	220 – 240V (NORMAL / LOW ²)		254 W / 162 W
FAN NOISE	(NORMAL / ECO)		29dB / 20dB
WEIGHT			Approx. 7.4 kg

WHAT'S IN THE BOX

Quick Start Guide
Remote Control with 2 x AAA battery
1.8m Power Cable x 1

OPTIONAL ACCESSORIES

Air Filter ELPAF60
100" ALR Screen ELPSC35
120" ALR Screen ELPSC36
Wireless Karaoke Microphone ELPKM01

©2026 Epson Singapore Pte Ltd. All Rights Reserved. Reproduction in part or in whole, without the written permission from Epson, is strictly prohibited. EPSON is a registered trademark of Seiko Epson Corporation. All other product names and other company names used herein are for identification purposes only and are the trademarks or registered trademarks of their respective owners. Epson disclaims any and all rights in those marks. Projected images shown herein are simulations. The actual product design and contents may vary. Specifications are subject to change without notice and may vary between countries. Please check with local Epson offices for more information.

Apple, iPad and iPhone are trademarks of Apple Inc., registered in the U.S. and other countries. App Store is a service mark of Apple Inc.

Sound by Bose is a trademark of Bose Corporation, used under license by Epson.

Google TV is a trademark of Google LLC.

Dealer's Stamp

Information correct at time of printing.
Printed March 2026

¹ Using Pixel shifting technology.

² Where Low = Eco/Extended/Quiet, whichever lower.

³ Colour brightness (colour light output) and white brightness (white light output) will vary depending on usage conditions. Colour light output measured in accordance with IDMS 15:4; white light output measured in accordance with ISO 21118.

PRODUCT MODEL			LIFESTUDIO GRAND PLUS EH-LS970B
PROJECTION TECHNOLOGY			RGB liquid crystal shutter projection system (3LCD)
SPECIFICATIONS OF MAIN PARTS			
LCD	SIZE		0.62 inch
	NATIVE RESOLUTION		1080P (Full HD)
RESOLUTION ON-SCREEN (MAXIMUM)	RESOLUTION		4K ¹
	PIXEL NUMBER		8.3M Dots (1920 x 1080 x 4)
PROJECTION LENS	TYPE		No optical zoom / Focus: manual
	F-NUMBER		1.8
	FOCAL LENGTH		2.3 mm
	THROW RATIO (WIDE TO TELE)		0.16 – 0.40 (Digital Zoom)
LIGHT SOURCE	TYPE		Laser diode
	LIFE (NORMAL / LOW ²)		20,000 / 20,000 hours
SCREEN SIZE (PROJECTED DISTANCE)			80" to 150" [0.28cm to 0.54cm] @ 16:9
BRIGHTNESS³	COLOUR LIGHT OUTPUT		4,000 lm
	WHITE LIGHT OUTPUT (NORMAL / ECO)		4,000 lm / 1,200 lm
CONTRAST RATIO			Over 5,000,000:1
INTERNAL SPEAKER(S)	SOUND OUTPUT		Sound by Bose 2.1ch Satellite x2, Woofer x1 (20W)
GEOMETRIC CORRECTION	POINT CORRECTION		Yes
	QUICK CORNER		Yes
CONNECTIVITY	DIGITAL INPUT	HDMI	3 (SMF, HDMI2=eARC, HDCP2.3)
	AUDIO OUT		1 (Stereo Mini), 1 (S/PDIF)
	USB I/O	TYPE A	2
		TYPE B	1
	WIRELESS LAN		Built-in (Smart Media Player)
DIMENSIONS (W X D X H)	EXCLUDING FEET		695 x 341 x 145 mm
POWER CONSUMPTION	220 – 240V (NORMAL / LOW ²)		347 W / 178 W
FAN NOISE	(NORMAL / ECO)		29dB / 18dB
WEIGHT			Approx. 12.4 kg

WHAT'S IN THE BOX

Quick Start Guide
Remote Control with 2 x AAA battery
1.8m Power Cable x 1

OPTIONAL ACCESSORIES

Air Filter	ELPAF64
100" ALR Screen	ELPSC35
120" ALR Screen	ELPSC36
Ceiling Mount	ELPMB22, ELPMB30
Wireless Karaoke Microphone	ELPKM01

©2026 Epson Singapore Pte Ltd. All Rights Reserved. Reproduction in part or in whole, without the written permission from Epson, is strictly prohibited. EPSON is a registered trademark of Seiko Epson Corporation. All other product names and other company names used herein are for identification purposes only and are the trademarks or registered trademarks of their respective owners. Epson disclaims any and all rights in those marks. Projected images shown herein are simulations. The actual product design and contents may vary. Specifications are subject to change without notice and may vary between countries. Please check with local Epson offices for more information.

Apple, iPad and iPhone are trademarks of Apple Inc., registered in the U.S. and other countries. App Store is a service mark of Apple Inc.

Sound by Bose is a trademark of Bose Corporation, used under license by Epson.

Google TV is a trademark of Google LLC.

Dealer's Stamp

Information correct at time of printing.
Printed March 2026

¹ Using Pixel shifting technology.

² Where Low = Eco/Extended/Quiet, whichever lower.

³ Colour brightness (colour light output) and white brightness (white light output) will vary depending on usage conditions. Colour light output measured in accordance with IDMS 15:4; white light output measured in accordance with ISO 21118.