

HOME THEATRE 4K 3LCD LASER PROJECTOR  
EH-QL3000W

EPSON



# BUILT FOR EXPERIENCES IN BRILLIANT 4K CLARITY.

Transform your lifestyle with stunning 4K visuals and flexibility.

The Epson EH-QL3000W 4K laser home theatre projector brings forth a stylish and classy design, delivering a transformative visual experience to your home. Complete your home entertainment setup and indulge in your favourite content with the projector's 4K resolution and high 6,000 lumens of brightness. Additionally, maintaining professional-grade image enhancement features and exceptional installation flexibility with a versatile lens\* selection makes it ideal for any room decor and setup.

\*Interchangeable lens, vanity board and lens housing options sold separately.  
The featured EH-QL3000W projector in this brochure is customised with a champagne gold vanity board.

ENGINEERED FOR good



## Inspired by Light



### For A New, Richer Expression

Celebrate light with EH-QL3000W projector, designed to shine brilliantly even in bright rooms. Moving beyond traditional dark home theatres, its design philosophy embraces the beauty of illumination, seamlessly integrating with modern interiors. The projector boasts a sleek, elegant design with a premium finish and customisable lens options\*, all accentuated by a sophisticated champagne gold casing\*. Optimised for vibrant spaces, it delivers stunning picture quality, transforming any room into a luminous, immersive viewing experience.

\*Interchangeable lens, vanity board and lens housing options sold separately.

## Holistic Viewing Experience

The EH-QL3000W embodies the perfect interplay of brightness, colour, and detail, each contributing to a superior viewing experience. This holistic approach is essential for projectors, as these elements work together to enhance image clarity and richness. By harmonising these elements, the EH-QL3000W delivers a vivid and immersive experience with superb image quality, ensuring that movies, games, and all visual content are enjoyed with maximum impact and fidelity.

### Holistic Image Quality

#### Brightness

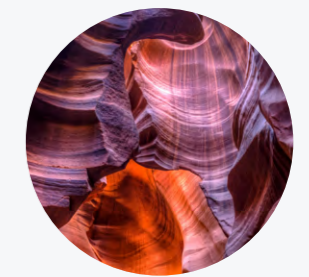
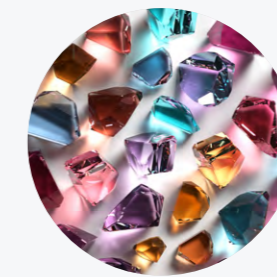
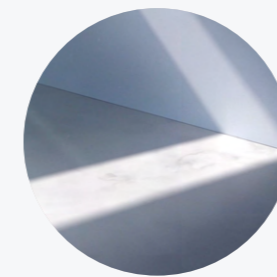
Brightness is crucial for image quality, making visuals more vibrant and impactful. It enhances the clarity and visibility of colours and details, ensuring a vivid and engaging viewing experience.

#### Colour

Colour accuracy enriches the viewing experience by reproducing true-to-life hues and saturation. It ensures that images reflect realistic colours, enhancing overall atmosphere and visual appeal.

#### Detail

Detail pertains to the sharpness and dynamic range of the image. Advanced processing and precision lenses reveal intricate elements and depth, contributing to a clearer and more immersive visual experience.



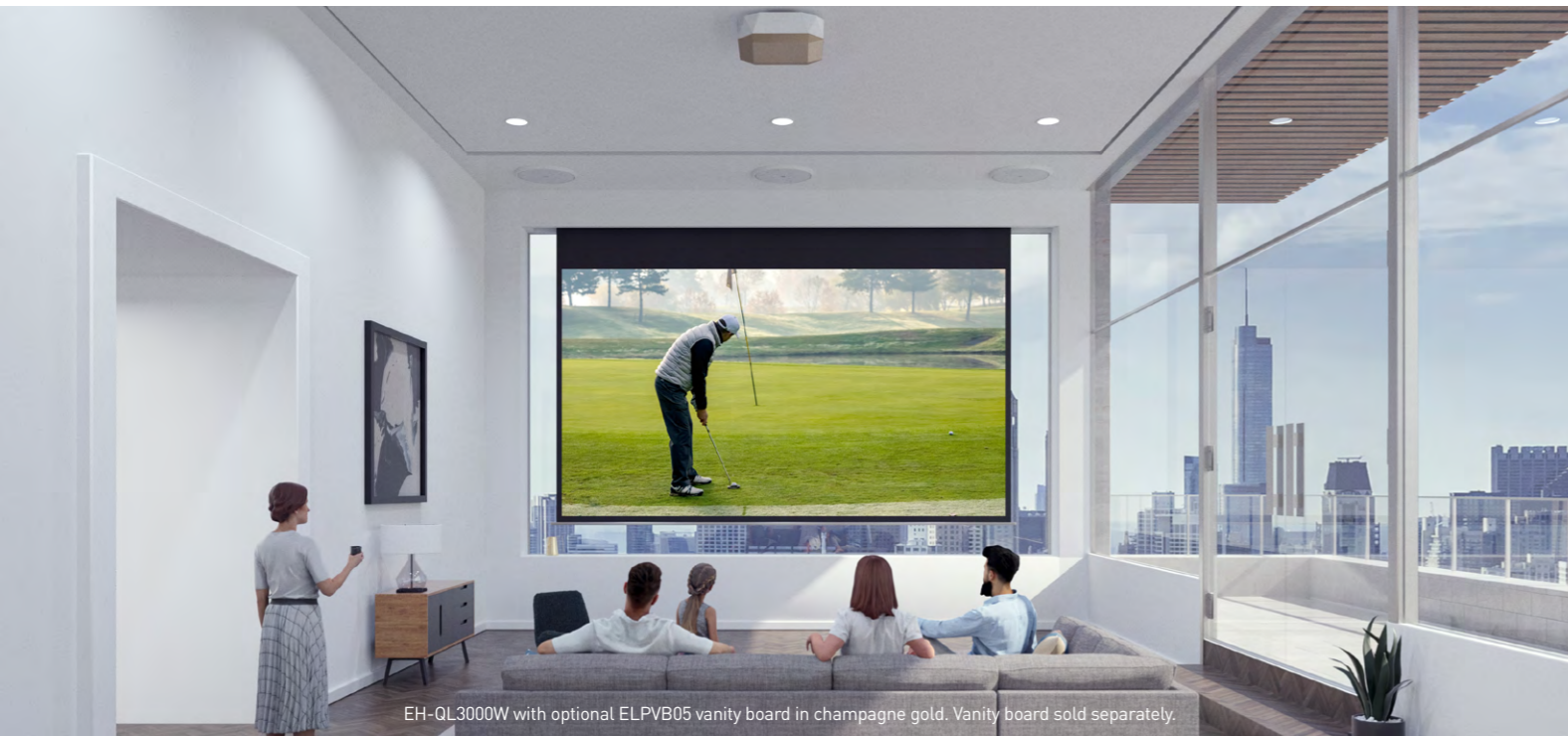
## Unique **Octagonal** Shape

Featuring an unprecedented octagonal design, this projector not only stands out with its stylish, modern aesthetic but also enhances visual appeal and integrates seamlessly into any setting.



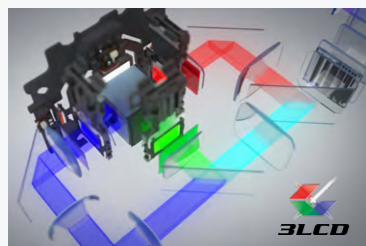
EH-QL3000W with optional ELPVB05 vanity board in champagne gold. Vanity board sold separately.

# Amazingly Brighter



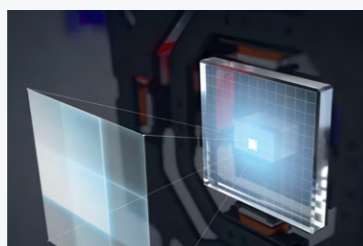
EH-QL3000W with optional ELPVB05 vanity board in champagne gold. Vanity board sold separately.

Transform your home into a cinematic haven with Epson's premium EH-QL3000W. This cutting-edge laser projector delivers brilliant image quality and exceptional brightness, perfect for vibrant viewing even in well-lit spaces.



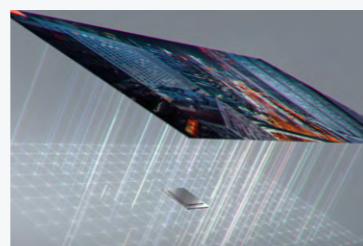
### 3LCD Laser Technology For Unparalleled Colour Realism

Equipped with unique cutting-edge 3LCD laser optical engine, the EH-QL3000W delivers incredible contrast and 6,000 lumens of equal white and colour brightness\* from jet black to rich, vibrant colours with its superb colour reproduction.



### 2-Axis Shifting 4K Innovation For Clear Precise Images

Using Epson's proprietary shift device technology<sup>^</sup>, the high aperture ratio 1080p panel is upscaled to Real 4K, achieving 8.3mil pixels. Delivering bright and vivid images in every projection.



### Powerful 4K Image Processor For Vivid, Precise Visuals

Experience exceptional clarity and vibrant colours with our powerful 4K image processor, designed to enhance detail, support HDR10, and deliver superior image quality for an immersive viewing experience.

\* Colour brightness (colour light output) and white brightness (white light output) will vary depending on usage conditions. Colour light output measured in accordance with IDMS 15.4; white light output measured in accordance with ISO 21118.  
<sup>^</sup> Epson patented unique feedback control technology ensures precise and unmatched shift device movement.

## High Contrast Ratio

With a high contrast ratio of over 5,000,000:1 and exceptional brightness, the projector offers a broader spectrum of light levels. This enhances the visibility of intricate details in both dark and bright scenes, resulting in a richer and more immersive viewing experience.



Dark room viewing

Bright room viewing

## High Dynamic Range

Support HDR10 and Hybrid Log-Gamma to provide more precise detailing for light and dark graduation contents, as well as more vibrant images and improved contrast.



SDR (Standard Dynamic Range)

HDR (High Dynamic Range)

## Various Colour Modes

Enjoy vibrant visuals with enhanced colour temperatures and vivid hues, plus adjustable settings for optimal brightness and contrast in any viewing environment.



Mode: Cinema

Mode: Vivid

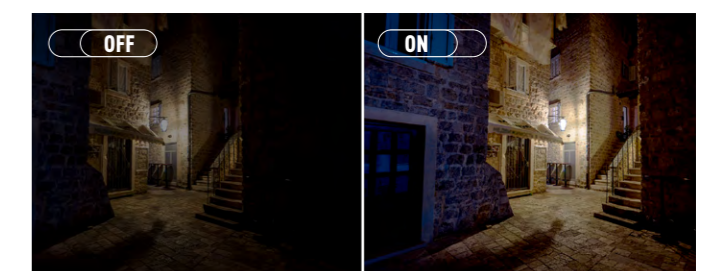
## Scene Adaptive Gamma / Auto Contrast Enhancement

This unique image quality adjustment feature analyses display content frame by frame, automatically adjusting the gamma level for optimal contrast and more natural-looking projected images.



For brighter scene

For darker scene



For brighter scene

For darker scene

**HOME THEATRE 4K 3LCD LASER PROJECTOR  
EH-QL3000W**

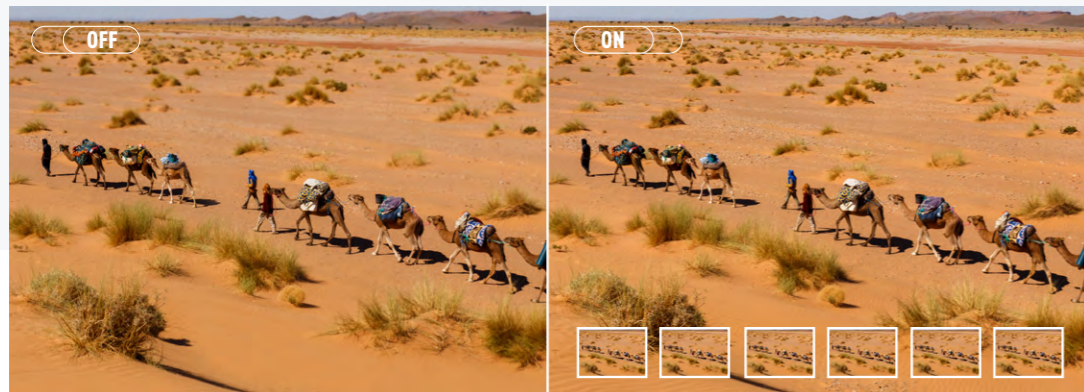


## Every Detail Matters

Enjoy a viewing experience where every scene is displayed with stunning clarity and precision, making every detail come to life for a truly immersive and vivid experience.

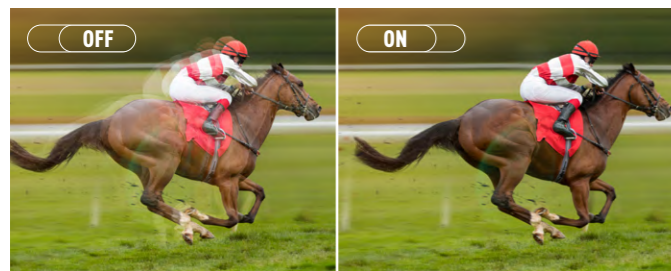
### New Dynamic Tone Mapping

Optimises HDR scene-by-scene for precise brightness and contrast, enhancing detail and colour accuracy for a more immersive viewing experience.



### Smooth Fast-Moving 4K Video with Frame Interpolation

With the improved frame interpolation technology, never miss out on any detail when watching fast-moving sports or gaming. Get clear image contours and smooth motion for a more holistic 4K viewing experience.



### Gaming-Optimised Performance

The EH-QL3000W supports 4K resolution at 120fps and Auto Low Latency Mode (ALLM), optimising your gaming experience on gaming consoles for smooth, high-quality visuals in your living room.



Optional vanity board and lens housing in white, black or champagne gold is recommended when used with ELPLX02S lens.

## Effortless Setup & Connectivity

Enjoy a viewing experience where every scene is displayed with stunning clarity and precision, making every detail come to life for a truly immersive and vivid experience.

### Precision and Flexibility with 4K Lenses\*

Manufactured in Japan, these high-quality 4K lenses offer precise focus and superior colour reproduction. With 11 interchangeable options for flexible installation, you can achieve optimal placement and projection, ensuring ideal image clarity and alignment tailored to your viewing space.

\*Lens sold separately.

Lens technology: **4K Support for 4K Video** **Outstanding Light Resistance** **High-lumen Support**

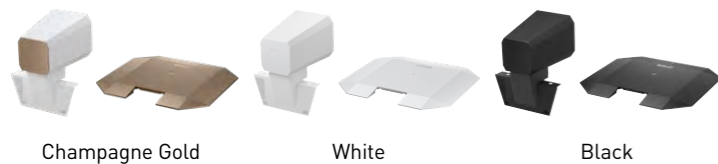
LENS	THROW RATIO
ELPLL08	5.09 - 7.16
ELPLM11	3.42 - 5.23
ELPLM10	2.34 - 3.59
ELPLM15	1.52 - 2.47
ELPLM08	1.02 - 1.64
ELPLW06	1.15 - 1.57
ELPLW08	0.83 - 1.17
ELPLW05	0.74 - 1.04
ELPLU04	0.62 - 0.75
ELPLU03S	0.46 - 0.56
ELPLX02S	0.34

## Versatile Projection Solutions

### Customisable Look

Transform your space with a sleek projector design that offers seamless projection and flexible installation options. Enhance both home and commercial interiors with customisable champagne gold vanity boards and lens housing for a sophisticated, unobtrusive finish.

Vanity board and lens housing\*:



\*Vanity board and LX lens housing are only compatible with ELPX025 lens. ELPV04C vanity board and LX lens housing in champagne gold sold separately. Also available in white (ELPV02W) and black (ELPV03B) options.

### Various IP Control Functions

Seamlessly integrate with smart home networks using versatile IP control options, including RS232C and wired LAN, and support for major global smart home platforms for streamlined dealer setup and network control.

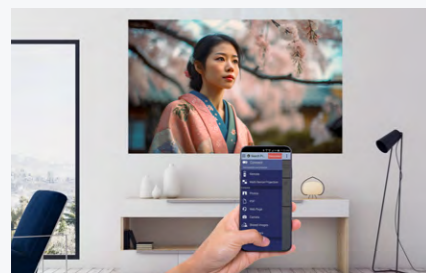


## Software Support Function Enhancement

Elevate your home setup and visual experience with enhanced functionality and versatility. Discover our tailored software tools designed to optimise the EH-QL3000W's performance and ease of use.

### Epson iProjection

Seamlessly connect and project from your devices, enabling projection of your favourite movies and television shows!



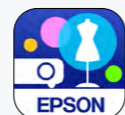
### Epson Creative Projection

Unlock creative possibilities with advanced projection features, including custom shapes and immersive visuals to create your unique visual experience.



### Epson Projector Content Manager

Create content with ease using this intuitive application, allowing for dynamic and organised content for projection.



**TRUE COLOURS**  
Brighter, vivid projection from Epson

# Unveil The True Colours



True  
**BRIGHTNESS**

True  
**COMFORT**

True  
**REALISM**

Up to 3x  
Brighter Colours



WHITE 3000 LUMENS  
COLOUR 3000 LUMENS

No Rainbow  
Effect



LIGHT SOURCE  
PRISM

3x Wider  
Colour Gamut



WIDER  
COLOUR RANGE

EPSON 3LCD  
PROJECTORS

1 - CHIP  
PROJECTORS



WHITE 3000 LUMENS  
COLOUR 430 LUMENS\*\*



LIGHT SOURCE  
ROTATING  
COLOUR WHEEL



SMALLER  
COLOUR RANGE



\*\*Leading Epson business and education projectors vs. leading 1-chip DLP projectors, selected according to NPD data as of July 2015. Based on U.S. research conducted by Radius Research.



# SEE ULTRA



## EXPERIENCE ULTRA. GO BEYOND THE TV.

Big screen entertainment with vibrant 3LCD colour technology.

Go beyond the TV experience with bigger movie nights, gaming, streaming, and screen sharing. Choose from home cinema projectors to ultra short throw laser projectors or pick a flexible and portable projector and turn any space into a visual party.

Disclaimers: Champagne gold vanity board for EH-QL3000W sold separately.



Scan to learn more

## SPECIFICATIONS

<b>MODEL NUMBER</b>	<b>EH-QL3000W<sup>1</sup></b>		
<b>SKU Code</b>	V11HB34980		
<b>Projection Technology</b>	RGB liquid crystal shutter projection system (3LCD)		
<b>Specifications of Main Parts</b>			
LCD	Size	1.04" wide panel with DMLA (C2 Fine, 12 bit, OD)	
	Driving Method	Poly-silicon TFT active matrix	
	Pixel On Screen	8.29 million dots	
	Resolution	Real 4K (1920 x 1080 x 4)	
	Aspect Ratio	16:9	
	Pixel Arrangement	Cross stripe	
	Projection Lens	Type	Power Zoom, Power Focus
	(Based on ELPLM15 lens)	F-Number	1.8 - 2.3
		Focal Length	36.0 - 57.3 mm
		Zoom Ratio	1.0 - 1.61
Lightsource	Type	Laser Diode	
	Life (Normal)	20,000 hours	
	<b>Screen Size (Projected Distance)</b>		
Zoom: Wide	60" - 1,000" [1.98 - 34.19 m] with Standard Zoom Lens (ELPLM15)		
Zoom: Tele	60" - 1,000" [3.24 - 55.28 m] with Standard Zoom Lens (ELPLM15)		
<b>Brightness<sup>2</sup></b>			
White/Colour Light Output	6,000 lm / 6,000 lm		
Light Output (Center) <sup>3</sup>	6,300 lm		
Light Output Uniformity	85%		
Colour Reproduction	Up to 1.07 Billion Colours		
<b>Contrast Ratio</b>	Over 5,000,000:1		
<b>Geometric Correction</b>			
Vertical / Horizontal Keystone	±45° / ±30° with Standard Zoom Lens (ELPLM15)		
Quick Corner	Yes		
Curved Surface Correction	Yes		
Point Correction	Yes		
Corner Wall	Yes		
Geometry Correction Memory	Yes		
<b>Connectivity</b>			
Digital Input	HDMI	2 (HDCP 2.3)	
USB Input	USB Type A	2 (For ELPAP12, Firmware Update, Copy OSD Settings or 5V/2A, 5V0.9A Power Supply, Content Playback)	
	USB Type B	1 (For Firmware Update, Copy OSD Settings)	
Control I/O	RS-232C	1 (D-Sub 9pin)	
Audio Output	Stereo Mini	1	
Network	Wired LAN	RJ45 x 1 (100Mbps)	
<b>Operating Temperature</b>			
	Low Altitude (0 - 2,286m/7,500ft): 5 - 35 °C <41 - 95 °F>		
	High Altitude (Over 2,286m/7,500ft): 5 - 30 °C <41 - 86 °F>		
	20% - 80% Humidity, No Condensation		
<b>Operating Altitude</b>	Over 1,500m/4,921ft with High Altitude Mode: 0 - 3,048m (0 - 10,000ft)		
<b>Air Filter<sup>3</sup></b>	20,000 hrs		
<b>Direct Power On / Off</b>	Yes / N/A		
<b>Start-Up Period</b>	Less than 9 seconds (Epson Logo); Warm-up Period: 20 seconds		
<b>Cool Down Period</b>	Instant Off		
<b>Power Supply Voltage</b>	100 - 240 V AC ±10%, 50/60 Hz		
<b>Power Consumption (220 - 240V)</b>			
Laser Diode On	Normal	437 W	
	Extended	346 W	
Standby (Normal / Eco)	2.0 W / 0.5 W		
<b>Dimension Excluding Feet (W x D x H)</b>	568 x 568 x 181 mm		
<b>Weight</b>	Approx. 21.1kg		
<b>Fan Noise (Normal / Eco)</b>	28dB / 26dB		

<sup>1</sup> Lens sold separately.

<sup>2</sup> Colour brightness (colour light output) and white brightness (white light output) will vary depending on usage conditions. Colour light output measured in accordance with IDMS 15:4; white light output measured in accordance with ISO 21118.

<sup>3</sup> When used in the general office environment (the amount of floating dust: 0.04 - 0.2 mg/m<sup>3</sup>). Based on the Epson's in-house test results.

### Supplied Accessories

Remote Control with AA Battery  
Cable Cover  
Vanity Board (White)  
Quick Start Guide

### Optional Accessories

Suspension Adapter: ELPFP15  
Air Filter: ELPAF46  
Ceiling Mount: ELPMB67/47/48  
Streaming Media Player: ELPAP12  
Vanity Board: ELPVB05  
(Champagne Gold):  
Lens Housing (White): ELPVB02W  
Lens Housing (Black): ELPVB03B  
Lens Housing (Champagne Gold): ELPVB04C

### Optional Lenses

Ultra Short Throw Lens: ELPX02S  
Zoom Lens: EPLU03S, EPLU04, EPLW05, EPLW06, EPLW08, ELPLM08, ELPLM10, ELPLM11, ELPLM15, EPLL08

EH-QL3000W



©2024 Epson Singapore Pte Ltd. All Rights Reserved. Reproduction in part or in whole, without the written permission from Epson, is strictly prohibited.

EPSON is a registered trademark of Seiko Epson Corporation.

All other product and company names used herein are for identification purposes only and are the trademarks or registered trademarks of their respective owners.

Epson disclaims any and all rights in those marks. Projected images shown herein are simulations. The actual product design and contents may vary. Specifications are subject to change without notice and may vary between countries. Please check with local Epson offices for more information.

Apple, iPad and iPhone are trademarks of Apple Inc., registered in the U.S. and other countries. App Store is a service mark of Apple Inc.

Android is a trademark of Google Inc.

Dealer's Stamp

Information correct at time of printing.  
Printed November 2024

**EPSON**