

SPECIFICATIONS

MODEL NUMBER		ELPDC21	ELPDC30
SKU Number		V12H758052	V12HB09080
Specifications of Main Parts			
Sensor	Pick-up Device	CMOS	1 / 3.2"
	Size	1 / 2.7"	13M Pixels (4280 x 3120)
	Effective Pixels	2M Pixels (1920 x 1080)	4K (16:9 Aspect Ratio)
	Native Resolution	1080p (16:9 Aspect Ratio)	Up to 60 fps
Video Output	Frame Rate	Up to 30 fps	3840 x 2160 @ 60 / 3840 x 2160 @ 30 / 1920 x 1080 / 1280 x 720 / 1024 x 768
	Display Out	SXGA (1280 x 1024) / XGA (1024 x 768) / WXGA (1280 x 800) / HD (1360 x 768) / 1080p (1920 x 1080)	XGA / 720p / Full HD / 4K
		480p / 720p / 1080p	N/A
		VGA / SVGA / XGA / SXGA / WXGA / 720p / 1080p	320 x 180 / 320 x 240 / 640 x 360 / VGA / XGA / 720p / WXGA / QVGA / SXGA / Full HD / UXGA / 2048 x 1536 / 2560 x 1920 / 4K Full HD
	HDMI		
	USB-B		
	USB Type Mini-B	N/A	
	Miracast	N/A	
Optical Systems			
Lens	Type	Optical Zoom / Focus	F = 2.8
	F-Number	F = 3.4 to 5	345 x 480 mm at 470 mm
Shooting Area		Max 297 x 526 mm at 1080p output resolution	Larger than A3: via Wide Angle mode (4:3)
Zoom		Up to 10x Digital	Up to 23x Digital
Focus		Up to 12x Optical	Up to 10x Optical
		Automatic (need to press 'Focus' button), Focus adjust time: less than 2 sec	Automatic (need to press 'Focus' button), Focus adjust time: less than 4 sec
Illumination			
Light Equipment		White LED x 2 (variable LED light)	White LED x 8 (variable LED light)
Interface Port			
Input	D-Sub 15Pin (VGA)	1 (Black)	N/A
	HDMI	N/A	1
Output	D-Sub 15Pin (VGA)	1 (Blue)	N/A
	HDMI	1 (in common with CEC control)	
USB I/O		Type B x 1 (UVC Ver 1.1, UAC Ver 1.0 support)	Type A x 1 (For wireless LAN) Type Mini-B x 1 (UVC Ver 1.1, UAC Ver 1.0 support)
Internal Microphone		Yes (Monaural)	N/A
Memory I/O	SD Card	1 SD / SDHC, No SDXC support)	1 [USB flash drive FAT (32GB Max)]
	USB Memory	N/A	
Wireless Specification (Screen Mirroring): Supported Speed for Each Mode			
		N/A	Access Point (Wi-Fi Direct): IEEE 802.11g (2.4GHz): 54 Mbps* IEEE 802.11n (2.4GHz): 72.2 Mbps* IEEE 802.11a (5GHz): 54 Mbps* IEEE 802.11n (5GHz): 150.0 Mbps* IEEE 802.11ac (5GHz): 325Mbps* Access Point (Wi-Fi Direct) Access Point (Wi-Fi Direct): WPA2-PSK (AES)
Supported Mode		N/A	
Supported Security Type		N/A	
Basic Function			
Capture		Yes (w/Audio, need external SD card)	Yes (need USB memory)
Record	Yes	Yes	Yes (need USB memory)
Freeze / Stop		Yes	
AE Lock	N/A	Yes	
Lamp	Yes (Bright / Dim / Off)	Yes	Yes (on / Off)
Image Rotation	Yes (0 degrees / 180 degress)		
Image Mode		Yes (Normal / Text / Display)	Yes (Normal / Motion / Wide Angle / Microscope / Macro / Infinity)
Extended Function			
Playback / Slideshow		Yes (need external SD card)	Yes
Split Screen		Yes	N/A
Supported File Format			
Still Image	Capture Format	JPEG	Up to 4K
	Capture Resolution	Up to 1920 x 1080	USB Memory
	Display Capability	SD Card Viewer	
	Format	JPEG	
Video/Movie	Resolution	Up to 7680 x 5760	Up to 4K
	Capture Format	AVI (Motion JPEG + PCM)	MP4
	Capture Resolution	Up to 1280 x 720	Up to 4K
	Display Capability	SD Card Viewer	USB Memory
	Format	AVI (Motion JPEG + PCM)	MP4
	Resolution	Up to 1280 x 720	Up to 4K
	File Size	Up to 2GB	
Adjustment Function			
Image	White Balance	Yes (Auto, Cloudy, Daylight, Fluorescent, Incandescent)	Yes (Auto, Manual, Cloudy, Daylight, Fluorescent, Incandescent)
	Focus	Yes (Manual adjustment)	Auto Focus
	Focus Lock	Yes	N/A
	Colour / B&W / Negative	Yes (Colour, Black & White, Negative)	
Function	Microscope	Yes	
	Noise Reduction	Yes	N/A
	HDMI Output	Yes [Auto, SDTV (480p), HDTV (720p), HDTV (1080p)]	
	Flicker Reduction	Yes (50Hz, 60Hz)	
	Language	Yes	
	Sleep Mode	Yes	
	Sleep Mode Timer	Yes	
	HDMI Link	Yes (On / Off)	
Power			
Power Supply Voltage		100 – 240V AC (50/60 Hz)	
Output Voltage of AC Power Adapter		12V	5V
Power Consumption		13W	9.6W (Lamp On), 8W (Lamp Off)
Power Consumption (Standby)		Less than 0.5W	
Operating Temperature			
		5 – 35 °C <41 – 95 °F> (0m / 0ft – 2,286m / 7,500ft)	
		(20% – 80% Humidity, No Condensation)	
Dimensions (W x D x H)			
Open		270 x 502 x 328 mm	586 x 159 x 554 mm
Folded		375 x 120 x 122 mm	362 x 159 x 85 mm
Weight		Approx. 3kg	Approx. 2.8kg
Theft Proof			
Kensington Lock		Yes	
Security Bar	Yes	N/A	
Security Lock Hole	Yes	N/A	

* These modes and actual data throughputs depend on supported wireless mode of source devices and/or environmental conditions.

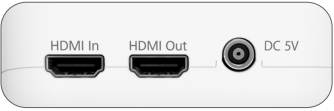
Supplied Accessories

ELPCD21
USB Cable
Computer Cable
AC Power Adapter with Power Cable
Remote Control: Yes (with 2 AA Batteries)
Microscope Adapter



ELPCD30
HDMI Cable
USB Cable
AC Power Adapter with Power Cable
Remote Control: Yes (with 2 AAA Batteries)
Microscope Adapter

Optional Accessories:
Soft Carrying Case (ELPKS72)



©2025 Epson Singapore Pte Ltd. All Rights Reserved.
Reproduction in part or in whole, without the written permission from Epson, is strictly prohibited.

EPSON is a registered trademark of Seiko Epson Corporation.

All other product and company names used herein are for identification purposes only and are the trademarks or registered trademarks of their respective owners.

Epson disclaims any and all rights in those marks. Projected images shown herein are simulations. The actual product design and contents may vary. Specifications are subject to change without notice and may vary between countries. Please check with local Epson offices for more information.

Dealer's Stamp

Information correct at time of printing.
Printed August 2025

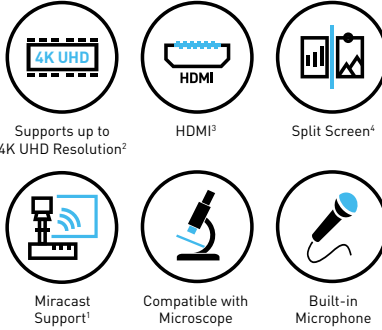
DOCUMENT CAMERAS
ELPDC21/30

EPSON



Optimise Learning with Effortless Compatibility and Superior Versatility.

Revolutionise your educational presentations with Epson's premium document camera series. Deliver stunning visual clarity with resolutions of up to 4K², bringing every detail to life in vivid, captivating quality. Designed for maximum versatility, these document cameras offer a wide range of connectivity options to suit any presentation environment. Effortlessly integrate with Epson's interactive projectors to enable real-time image manipulation directly from the screen, ensuring seamless, dynamic and uninterrupted presentations every time.



Compact and Portable

Easily transport the document camera with its compact, lightweight design.

High Image Quality

Experience large scale clarity with Full HD or 4K¹ high image output, ensuring crisp, seamless visuals.

Versatile Connectivity

Experience seamless integration and versatile connectivity for unparalleled digital imaging with Epson's interactive projectors.

¹ For ELPDC30 only.

² For ELPDC30. Resolution for ELPDC21 is Full HD.

³ HDMI out for ELPDC21.

⁴ For ELPDC21 only.

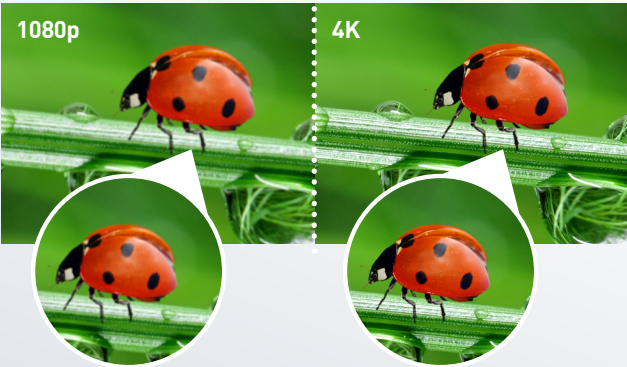
Engineered for Lively and Impactful Presentations.

Elevate your presentations with the Epson document camera series, designed to bring your content to life with stunning clarity. Seamlessly integrate with Epson's interactive projectors, take advantage of flexible connectivity options, and experience exceptional digital imaging. All of this comes in a sleek, compact design that ensures every presentation is polished and effortlessly delivered.



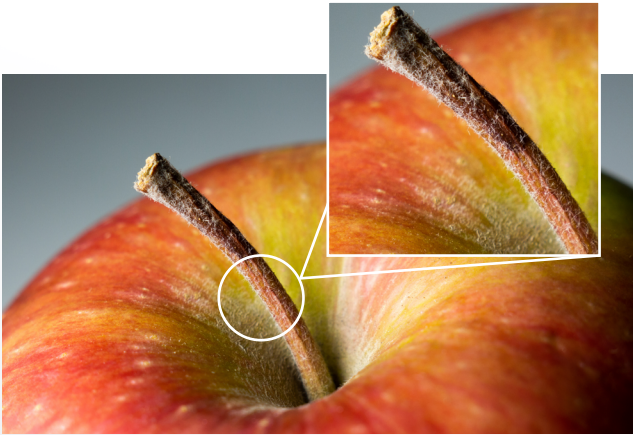
High Quality Output

Optimised for the ELPDC30, this model supports 4K output via HDMI, delivering ultra-clear, crisp visuals and smooth streaming or camera feeds, even at large projection sizes.



Larger Imaging Sensor

Achieve sharp, clear images with amazing quality and detail in any light with the large imaging sensor, which captures more light per pixel.



Up to 10x Optical Zoom and 23x Digital Zoom*

Zoom in on every intricate detail, enabling students to engage closely with the subject matter. Use the zoom function to highlight specific areas with crystal-clear clarity, without any loss in quality. Bring lessons to life right before their eyes, with no need for a microscope or shared photographs.

*For ELPDC30. For ELPDC21, Optical Zoom is 10x and Digital Zoom is 12x.



Large Capture Area

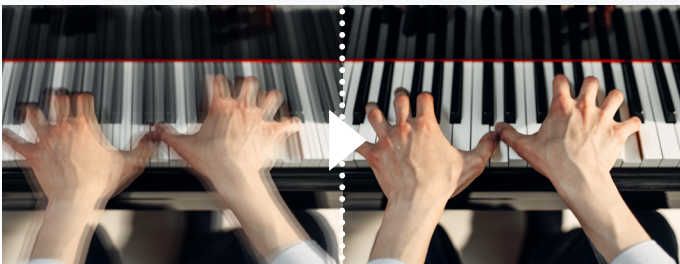
Unlock a universe of learning opportunities for your students. With its expansive capture area, the Document Camera showcases everything from full textbook spreads to intricate 3D objects and digital content from smart devices.



High 60fps Frame Rate*

Watch your presentation come alive with ultra-smooth 60 frames-per-second (fps) video quality*.

*For ELPDC30. ELPDC21 frame rate is 30fps.



Various Image Modes

The device caters to a diverse range of demands including normal, motion, high-quality, microscope, macro, and infinity modes, ensuring versatility in every use case.

Normal Mode
Suitable for normal usage

Motion Mode
Suitable for movie with high frame rate

High Quality Mode
Suitable for A3-sized documents

Microscope Mode
Suitable for microscope usage

Macro Mode
Suitable for short distance usage

Infinity Mode
Suitable for long distance usage

Note: Image mode availability varies for each model.

Versatile Connectivity

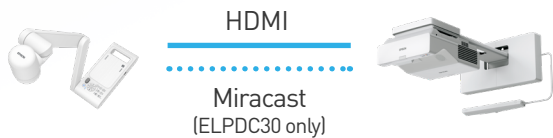


Transform educational experiences with dynamic multimedia presentations. Project captured images onto any display via HDMI or VGA*, or directly to a PC using the Epson Interactive Tool. Alternatively, use the Document Camera's own switcher for effortless projection.

*For ELPDC21 only.

Direct Connection

The camera image can be projected directly. When connecting the DC to an interactive projector, one can edit the camera image using a PC-free toolbar without the need for PC applications.



Connection through PC (EIT)

Able to project the camera image through the PC app using the Easy Interactive Tool software (EIT). Functions available include saving and annotating. Additionally, it can be used as an external camera for remote applications.



Connection through DC (Switcher)

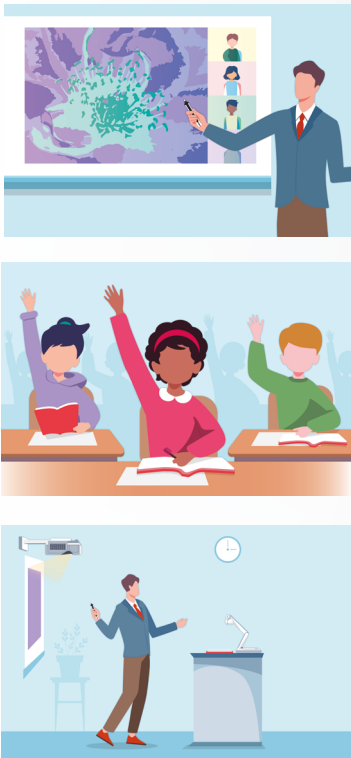
Users can switch the input source between the PC and DC from the DC control panel. It is easy to change the PC source using the DC.



Hassle-Free Compatibility

Interactive Projector Integration

Enjoy instant interactivity with easy-to-use interactive tools. With PC-less annotation, add notes and diagrams to live images with Epson's interactive projectors. Its compatibility with Epson's interactive projectors gives you ease-of-control to your presentations.



Epson Easy Interactive Tools (EIT)

With PC connectivity, users can use the Epson's Interactive Tool (EIT) to annotate on the live image. It is even easier with the Epson interactive projector, which allows users to annotate using the interactive feature.



Screen Mirroring Function For ELPDC30 only

The ELPDC30 also comes with Miracast support, allowing free placement of the document camera without the hassle of any cabling limitations. Additionally, users can easily switch the projection screen from PC or the document easily using the projector's remote control.

Advantages for Single User

Flexible placement

- Its wireless connection allows flexible placement anywhere in the classroom.

Cable-free convenience

- Users no longer need to worry about HDMI cable lengths, making it safer and easier to move around.

Advantage for Multiple User

Using DCs as needed

- Teachers and students can use them independently from different spots, minimising movement in the classroom.

Convenient Features

Effortless Recording and Sharing

Simplify your lesson recording with a single click on the control panel, directly saving to USB Storage (ELPDC30) or SD card (ELPDC21) – ideal for teachers preparing and streaming content. Effortlessly capture and share lessons with the document camera and built-in microphone, allowing students who missed the lessons to review recordings at their convenience.



Recording the lesson



Save as digital educational materials



For remote learning purposes

Seamless Screen Transition

The HDMI input/output feature facilitates easy screen switching for users, eliminating the need for a remote control.



Split Screen For ELPDC21 only

Split screen capability enables projecti on live and still images from a SD or memory card. The versatile remote controller works for both document camera and projector. Using the split screen, viewers can see both still and moving images.



Live image

Still image

USB or SD Card Storage

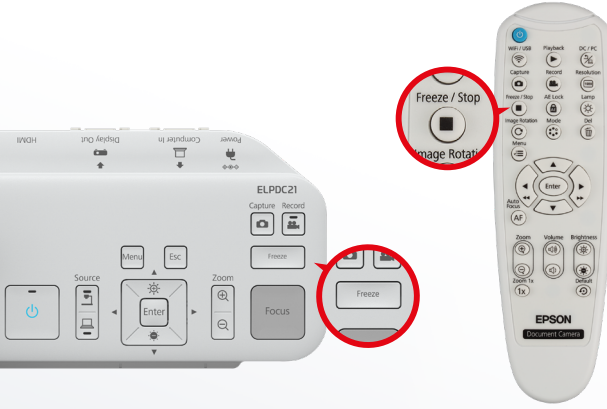
Captured images and recordings can be conveniently saved directly to a USB drive or SD card. The content playback mode enables easy review of previously covered material, facilitating a thorough lesson recap.

Built-in LED Light

The built-in LED light illuminates objects, allowing users to project them clearly even in dimly lit surroundings.

Freeze Function

Optimise hybrid and online learning environments with the Document Camera's advanced flexibility and freeze functions. The device's versatile mechanical arm empowers educators to effortlessly tailor the viewing angle, complemented by the convenience of quickly freezing or unfreezing the image using a dedicated button on the remote or the unit itself.



ELPDC21 Unit

ELPDC30 Remote

Portable and User-Friendly

Enhanced Portability

Designed for portability, the Document Camera folds into a compact unit with a built-in handle and fits seamlessly into a custom carrying case.



ELPDC30 with optional carrying case

ELPDC21
Approx.
3.0kg

ELPDC30
Approx.
2.8kg

One-Touch Simplicity

Enjoy the convenience of a one-touch button to freeze, focus, capture and record video.



ELPDC21

ELPDC30

Wide Connectivity

The Document Camera ELPDC30 offers versatile connection options, allowing for easy integration via either wired (HDMI/USB) or wireless (Wi-Fi) connectivity, while the ELPDC21 also supports connections via HDMI, USB or VGA.

For ELPDC21



For ELPDC30

