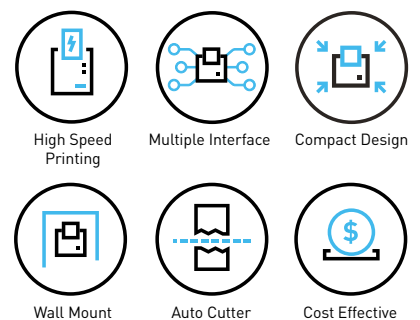


# FAST AND ACCURATE LABEL SOLUTIONS.



## Engineered for speed, precision, and dependable performance in high-volume labeling.

Power up your business with high-quality receipts and labels with Epson's dual-function thermal printers – TM-L90 series. Featuring blazing print speed of up to 170mm\* per second in high-speed mode, the TM-L90 series is designed and built with the reliability that Epson is trusted in. With the optional wall-mount kit, these compact printers work perfectly in space constraint environments.



## ENGINEERED FOR good



IDC Market Opportunity Assessment for Point of Sales Printers in ASEAN, a custom research commissioned by Epson.

### Superb Paper Handling

High-quality thermal printing at fast print speeds of up to 170mm per second, reliably producing crisp receipts and labels every time.

### Reliable Labelling Solution

Enjoy the highest level of print quality and dependable reliability through consistent, error-free label printing.

### Designed for Sustainability

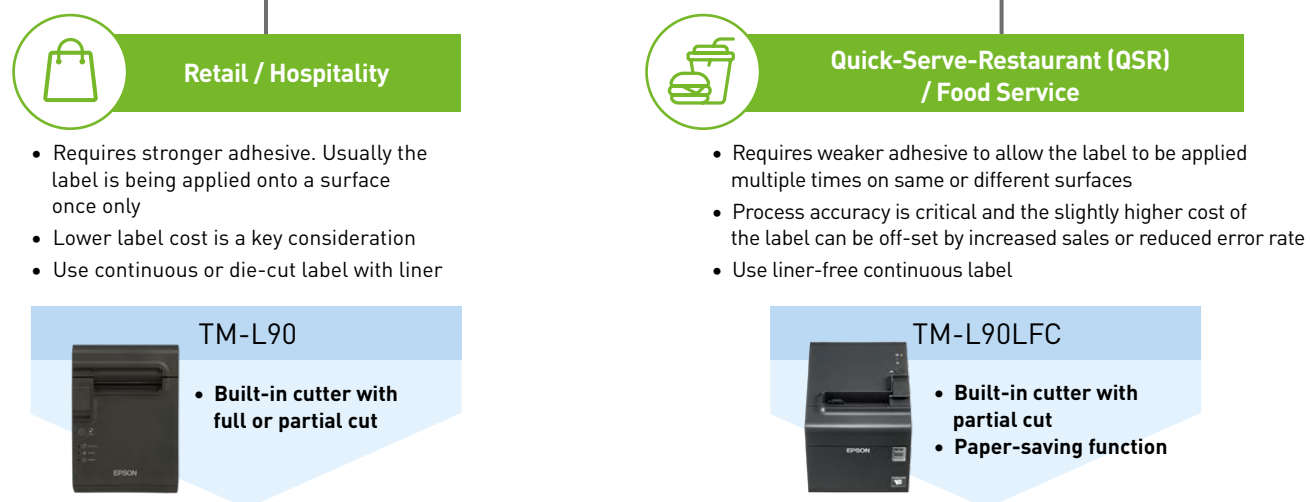
Paper-saving with advanced margin reduction options and minimum paper wastage to help lower costs and reduce environmental impact.

\*Applicable to TM-L90LFC. Maximum speed for TM-L90 is 150mm/sec.



## Choosing the right printer for your business:

### Typical Applications



## Liner-free Series TM-L90LFC

### The ideal companion for QSRs & Food Services

Built to speed up order accuracy for QSRs and food services businesses, TM-L90LFC minimises time wastage on incorrect order fulfilment, hence enhancing the overall customer experience. Businesses can enjoy an increase in customer retention, positive reviews, and even potential growth in new customers with higher standards of customer service.

Engineered to be environmentally-friendly, TM-L90LFC does not use any liner labels, minimising wastage and helping businesses do their part in reducing their carbon footprint.



Reduce Wastage  
Improved Order Accuracy  
Hassle-Free Operation

## Superb Paper Handling



### High-speed printing

Customers will not be kept waiting when you equip your business with the Epson TM-L90 series. With a maximum printing speed of 170mm/sec\*, your receipt or label will be ready in seconds – even when printing barcodes and logos.

### Large paper rolls

With an all-rounded paper-handling versatility, these label printers can process paper rolls of up to 102mm\*\* in diameter, reducing paper-loading downtime and saving on the cost of purchasing label paper.

### Selectable paper width

You don't have to buy another printer just to print on different size paper. With a simple spacer adjustment, users can modify the TM-L90 series to suit a variety of label types and sizes for both standard and adhesive-backed paper.

\* Applicable to L90LFC. For L90, maximum speed is 150mm/sec.

\*\*Applicable to L90LFC. For L90, maximum diameter is 90mm.

## Usability



## Superior Design



### Smaller footprint

A compact design makes the Epson TM-L90 series ideal for counters with limited space. Its low profile means that face-to-face contact with your customers is unimpeded, and there are no sharp corners or jutting out parts to get in the way.

### Cable management

The Epson TM-L90 series removes the problem of unsightly cables by having all its interfaces beneath the printer. With flexible installation options, you can now choose to keep the cables out of sight in your premises.

### Easy to site

These label printers blend perfectly into even the most refined environment. Install the printer vertically or horizontally, or use the optional wall-hanging bracket to move it off the counter altogether.

### Easy operation and maintenance

The printer is so easy to use that it requires almost no training. With simple and straight-forward paper feeding, the drop-in loading method allows operators to open and load new paper within a few short seconds.

### Reliable

There's nothing more annoying for you – and your customers – than paper jams. Not only are paper jams unlikely with the Epson TM-L90 series, but they are easy to clear if they do occur. With a long lifespan, your printer can print up to twenty million lines. (MCBF: Seventy million lines when printing receipt)

### Flexibility

TM-L90 series can be easily integrated with existing POS application as it supports the same standard commands for the retail environment.

## SPECIFICATIONS

MODEL		TM-L90	TM-L90LFC
SKU Code		C31C412412	C31C412681 / C31C412682
Printing Specifications			
Print Method		Thermal Line, 203 x 203 dpi	
Print Width	Receipt	Max. 72 mm (with 80 mm paper width)	
	Label	Max. 70 mm (with 80 mm liner width)	
Print Speed	Thermal Paper (w/o BM)	Max. 150 mm/sec	Max. 72 mm (with 80 mm width liner-free label)
		(Print density configurable. Max. 90 mm/sec for ladder barcode and two dimensional barcode printing)	Max. 170 mm/sec (Print density configurable)
Print Font	Liner-Free Label (w/BM)	N/A	Max. 90 mm/sec (Print density fixed)
	Font A (Default)	48 (12 x 24)	
	Characters per line (80 mm)		
	Font B	64 (9 x 17)	
	Characters per line (80 mm)		
Auto Scaling Feature		N/A	Default: On
Character Set		95 alphanumeric, 18 international character sets, extended graphics 128 x 47 pages (including user-defined page)	95 alphanumeric, 37 international character sets, extended graphics 128 x 11 pages (including user-defined page)
Barcode		UPC-A, UPC-E, JAN8 (EAN), Jan13 (EAN), ITF, Code39, Code93, Code128, Codabar (NW-7), PDF417, MaxiCode, QRCode, GS1-128, GS1 DataBar, Omnidirectional, GS1 DataBar Truncated / Stacked / Stacked Omnidirectional / Limited / Expanded / Expanded Stacked, Composite Symbology, DataMatrix	UPC-A, UPC-E, JAN8 (EAN), Jan13 (EAN), ITF, Code39, Code93, Code128, Codabar (NW-7), PDF417, MaxiCode, QRCode
Data Buffer		Receive buffer 4 Kb / 45 bytes	
Paper Specifications			
Paper Saving	Back Feed	Yes (When operating using EDC/POS commands only)	Yes
	Paper Saving	N.A	Yes
Roll Paper	Paper Width	80 mm (factory setting) or 38 – 70 mm (Users can change the paper width per 1 mm)	80 / 58 / 40 mm
	Diameter	90 mm	102 mm
	Changing Method	Paper guide	
	Paper Type	Receipt w/o BM	Receipt w/o BM
		Receipt w/BM	Liner-free label w/BM
Die-cut label w/o BM			
	Die-cut label w/BM		
	Continuous label w/o BM		
	Continuous label w/BM		
Operating Specifications			
Paper Detection	Auto Width	N.A.	Yes
	Auto Paper Type	N.A.	Thermal Receipt Paper: w/o BM Liner-free label: w/BM
Auto Cutter	Cut Type	Full cut (factory default) or Partial cut	Partial cut (Cutting with one point in left edge left uncut)
D.K.D. Function		2 drivers	
Printer Interface		Built in USB + Serial	Optional USB + LAN/ Serial
Factory Options		Paper roll spacer, Wall-hanging bracket WH-10	
Software Specifications			
Operating System		Windows 10 / 8.1 / 8 / 7 SP1 / Vista SP2 / XP Sp3 (32bit) / Server 2019 (64bit) / Server 2016 (64bit) / Server 2012 R2 / Server 2012 / Server 2008 R2 SP1 / Server 2008 SP2 / Server 2003 R2 SP2 / Embedded Standard 7 / Embedded POS Ready 7	Windows 10 / 8.1 / 8 / 7 SP1 / Vista SP2 / XP Sp3 (32bit) / Server 2019 / Server 2016 / Server 2012 / Server 2012 R2 / Server 2008 R2 SP1 / Server 2008 SP2 / Server 2003 R2 SP2 / Embedded Standard 7 / Embedded Standard 2009 / Embedded POS Ready 7 / Embedded POS Ready 2009 / Embedded for Point of Service / Embedded Enterprise / XP Embedded SP2
Driver Utility		APD / OPOS ADK / OPOS for .NET / JavaPOS ADK	APD / OPOS ADK / OPOS for .NET / JavaPOS ADK / Epson ePOS SDK for JavaScript (models equipped with UB-E04 only) / Memory Setting Utility
Product Specifications			
Reliability	Printer Life	Receipt: 20 million lines / Up to 120km (on 75 µm paper) Label: 1 million / Up to 30 - 70km	Thermal receipt paper: 20 million lines Liner-free label: 10 million lines
	Head Life	Thermal receipt paper: 150 million pulse	Thermal receipt paper: 150 million pulse, 150km Liner-free label: 75 million pulse, 75km
Auto Cutter Life	Auto Cutter Life	Thermal receipt paper: 2 million cuts (on 75 µm or less paper) Label: 1 million cuts (cut on liner)	Thermal receipt paper: 2 million cuts Liner-free label: 1 million cuts (cutting percentage of glued part: 50%)
		MTBF: 360,000 hours MCBF: 70 million lines	MTBF: 360,000 hours MCBF: 70 million lines (Thermal receipt paper) / 35 million lines (Liner-free label)
Electrical Specifications			
Power Supply	External Power Adaptor	PS-190 (included)	
	Operating Voltage	DC 24 V ±7%	
Power Consumption	Operating	Approx. 1.8 A (mean)	
	Standby	Avg.: Approx. 0.1 A (maximum 1 A for drawer kick driving)	
Product Packaging			
Weight & Dimension	Size (H x W x D)	203 x 140 x 148 mm	
	Weight	Approx. 1.9 kg	

## Dimensions & Weight

### TM-L90

Approx. 1.9kg



### TM-L90LFC

Approx. 1.9kg



## Legend

dpi dots per 25.4 mm (dots per inch)

©2026 Epson Singapore Pte Ltd.  
All Rights Reserved. Reproduction in part or in whole, without the written permission from Epson, is strictly prohibited.

EPSON is a registered trademark of Seiko Epson Corporation.

All other product and company names used herein are for identification purposes only and are the trademarks or registered trademarks of their respective owners.

Epson disclaims any and all rights in those marks. Projected images shown herein are simulations. The actual product design and contents may vary. Specifications are subject to change without notice and may vary between countries. Please check with local Epson offices for more information.

Dealer's Stamp

Information correct at time of printing.  
Printed February 2026

Find out more at [www.epson.com.sg/pos](http://www.epson.com.sg/pos)

epsonsg EpsonSingapore EpsonSoutheastAsia Epson Singapore epsonsingapore

**Epson Singapore Pte Ltd**  
**Epson Authorised Service Centre**

438B Alexandra Road, Block B Alexandra Technopark, #04-01/04, Singapore 119968. Tel: (65) 6586-5500  
6 Harper Road, #04-01 Leong Huat Building, Singapore 369674. Epson Helpdesk: 800-120-5564. Please refer to [www.epson.com.sg/contact](http://www.epson.com.sg/contact) for opening hours.