

THE RELIABLE AND AFFORDABLE SOLUTION FOR BUSINESS SUCCESS.



Designed for Growing Businesses, Blending Durability with Affordability.

The Epson TM-T82X-II is designed to meet the dynamic needs of growing businesses. With a boosted print speed of 250mm/sec, it ensures faster transactions in high-demand environments. The printer offers flexible connectivity options (USB, LAN, Serial) for seamless integration and features a built-in power supply, offering a space-saving solution for businesses with limited counter space. Combining superior performance, versatility, and reliability, the TM-T82X-II is the perfect choice for growing businesses.



High Speed
Printing



Multiple Interface



Compact Design



Cost Effective



Auto Cutter



Buzzer Compatible

ENGINEERED FOR good

Sleek and Clean Design

Featuring a sleek flat surface for a modern look, easy front control panel operation, and convenient top paper loading.

Improved Productivity

Boost efficiency with a fast 250mm/s print speed, a print head life of up to 100km, and an auto-cutter life of 1.5 million cuts.

Simple Setup

Quick and hassle-free installation with multiple interface options, including USB, Serial, and Ethernet compatibility.



IDC Market Opportunity Assessment for Point of Sales Printers in ASEAN, a custom research commissioned by Epson.

Compact and User-Friendly Design

The TM-T82X-II POS printer features a compact design with a built-in power supply, ensuring a neat and space-saving setup.

Its sleek, flat surface offers a modern, professional appearance, while the front control panel and convenient top paper loading make operation both effortless and efficient.

All front operations feature a wide top opening of up to 90° for easy consumable changes.

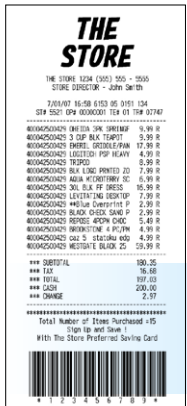


Paper width compatibility depends on selected SKU (58mm or 80mm).

Sustainable and Cost-Effective Printing

Maximised Savings, Minimised Waste

With an in-built character height reduction function, TM-T82X-II offers paper savings of up to 30%* compared to conventional models, providing greater cost savings and contributing to a more environmentally friendly operation.



Conventional model



TM-T82X-II

Character height reduction function (English character and numbers only)

Approx. 30% Reduced

User-Friendly and Efficient Solution

Enhanced Order Notification

The TM-T82X-II is compatible with the optional external buzzer OT-BZ20, offering clear order notification alerts ideal for noisy environments. With this addition, businesses can ensure that orders are easily heard, improving efficiency and minimising the risk of missed notifications.



Epson Optional External Buzzer OT-BZ20



Food and beverage industry



Retail industry

Performance and Reliability

Enhanced Printing Speed

The TM-T82X-II POS printer delivers fast printing at 250mm/sec, ensuring quick and efficient transaction processing. Its reliable performance makes it the perfect choice for businesses that need high-speed, consistent output during busy operations.

TM-T82X

200 mm/sec

TM-T82X-II

250 mm/sec

25% Faster than TM-T82X

Improved Durability

In addition to faster print speed, this POS printer offers exceptional durability, with a long-lasting print head and a cutter life of up to 1.5 million cuts, ensuring reliable performance over time.

Print Head Life	100 Km
Cutter Life	1.5 Million Cuts
Printer Mechanism Life	15 Million Lines
MTBF	360,000 Hours
MCBF	60 Million Lines

High-Quality Print

With high-density printing and precise PDI, this model delivers clear text, logos, QR codes, and barcodes. Surpassing its predecessor, it now includes support for Code 128, a barcode standard widely utilised in logistics and warehouse operations to encode complex data efficiently.

Versatile Connectivity Options

Tailored for Your Connectivity Needs

The TM-T82X-II features a dual-interface design, providing flexible connectivity options to meet diverse customer needs. With options such as USB + Serial or USB + Ethernet, businesses can easily integrate the printer into a variety of systems, ensuring seamless operation and enhanced versatility.

Rear Interface Layout
USB + SERIAL MODEL



Rear Interface Layout
USB + ETHERNET MODEL



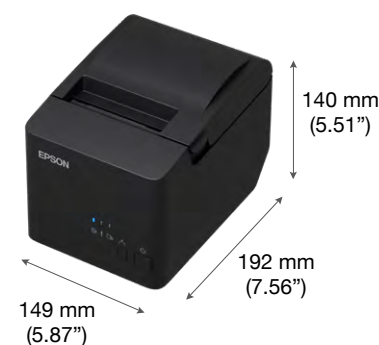
*Backward paper feeding is applied together. Tested with the pattern defined by Seiko Epson / Actual reduction ratio depends on printing patterns. Applicable for alphanumeric text printing only.

SPECIFICATIONS

MODEL NUMBER	TM-T82X-II
Printing Method	Thermal Line Printing
Print Font	
Font	ANK: 9 x 17 / 12 x 24, Kanji Font: 24 x 24, Thai Font: 9 x 24 / 12 x 24
Character Set	95 Alphanumeric, 18 set International, 128 x 43 pages (Including Thai / Viet and user-defined page) Simplified Chinese GB18030-2022 (Lv.2): 28,806
Barcode	UPC-A, UPC-E, JAN8 / EAN 8, JAN13 / EAN13, Code39, Code93, Code 128, Code128 auto, ITF, Codabar (NW-7), GS1-128, GS1 DataBar
Supported Language	ANK + Thai / Viet + Simplified Chinese
Interface	
Fixed Interface Model	Option 1: USB-B + 9-pin Serial Option 2: USB-B + Ethernet
Receive Data Buffer	4 KB or 128 KB
Print Speed	250 mm/s
Dot / Line	576 dots (80mm), 420 dots (58mm)
Resolution	203 x 203 dpi
Paper	
Roll Paper	Option 1: 79.5 ± 0.5 mm (W) x Dia. 83 mm Option 2: 57.5 ± 0.5 mm (W) x Dia. 83 mm
Cutting	Auto Cutter. Partially cuts the paper (one point left uncut in center)
Operating Voltage	AC100 to 240V
Power Consumption	
Operating Mode	Option 1: Approx. 27.7W Option 2: Approx. 31.3W
Standby Mode	Approx. 0.96 W
Operating Temperature	5 - 45° C (41 - 113° F)
Humidity	10 - 90% RH
Power Supply	AC Adapter C1 (Built-in)
Noise Level	Operating: 55 dB
Reliability	
Printer Mechanism Life	15 million lines
Auto Cutter Life	1.5 million cuts
Thermal Printhead Life	100 km
MTBF	360,000 hours
MCBF	60 million lines
General Information	
LED Indicators	Blue LED - Power Orange LED - Error, Paper Out
Sensor	Paper End, Cover Open
Built-in Features	Paper Saving Function, Automatic Paper Cut with logo printing
Printer Driver	Windows Driver (APD), OPOS, OPOS.NET, JavaPOS (Windows, Linux), CUPS Driver (Linux), Mac Driver, TM Virtual Port Driver, ePOS SDK (iOS, Android)
Utility Tools	Deployment Tool, Monitoring Tool, TM-T82X-II Utility
Colour	Epson Black (EBCK)
Overall Dimensions (W X D X H)	149 x 192 x 140 mm
Weight	Approx. 1.5 Kg

Dimensions & Weight

Weight: Approx. 1.5kg



What's in the box:

Roll Paper*
USB Cable
User Guide

*58 or 50mm paper width, depending on part number.

Options & Consumables:

Model Name	Product Code
Optional External Buzzer	C32C890634
OT-BZ20	

Legend

dpi dots per 25.4 mm (dots per inch)

©2025 Epson Singapore Pte Ltd. All Rights Reserved.
Reproduction in part or in whole, without the written permission from Epson, is strictly prohibited.

EPSON is a registered trademark of Seiko Epson Corporation.

All other product and company names used herein are for identification purposes only and are the trademarks or registered trademarks of their respective owners.

Epson disclaims any and all rights in those marks. Projected images shown herein are simulations. The actual product design and contents may vary. Specifications are subject to change without notice and may vary between countries. Please check with local Epson offices for more information.

Dealer's Stamp

Information correct at time of printing.
Printed April 2025

Find out more at www.epson.com.sg/pos

[f](#) epsonsg
 [i](#) EpsonSingapore
 [v](#) EpsonSoutheastAsia
 [in](#) Epson Singapore
 [d](#) epsonsingapore

Epson Singapore Pte Ltd
Epson Authorised Service Centre

438B Alexandra Road, Block B Alexandra Technopark, #04-01/04, Singapore 119968. Tel: (65) 6586-5500
6 Harper Road, #04-01 Leong Huat Building, Singapore 369674. Epson Helpdesk: 800-120-5564. Please refer to www.epson.com.sg/contact for opening hours.