

# STEERING PRECISION WITH ARCHITECTURAL ACCURACY.



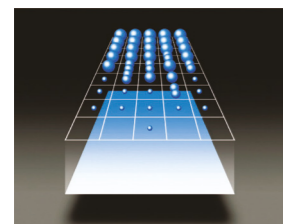
Transform your ideas into reality with T-Series printers, which excel in performance, precision, and engineering excellence. Designed for reliability and accuracy, these printers are equipped with PrecisionCore™ printheads and pigment inks, enabling businesses to amplify their plans effortlessly.

# PRECISE, ACCURATE AND COMPACT

Presenting the latest lineup of Epson SureColor T-series printers, meticulously engineered to cater to diverse printing requirements while maintaining an unwavering focus on precision. Leveraging Epson's cutting-edge technologies including PrecisionCore™ printheads, these printers deliver consistent performance and unparalleled quality seamlessly tailored to your business needs.

## PrecisionCore Printhead Technology

Epson's PrecisionCore printhead technology delivers impeccable print speed, quality and reliability. Epson Technical Printers produce precise detail with 0.02mm minimum line width, and highly accurate drawings with 0.1% line accuracy.



## Stress-free Operation

Reduce stress of operation with simple setup, user friendly interface, convenient media handling and easy maintenance that minimises downtime.

## Low Running Costs

### Ink Tank System

Save on printing cost by using affordable inks with the Ink Tank System. The ink tanks are easy to refill with large capacity ink bottles that reduces the frequency of ink replenishment.

### Replaceable Ink Pack System

Reduce the need to replace inks frequently with 1,600ml high capacity ink packs. It contributes to sustainability by greatly reducing the amount of waste caused by disposing consumables.



Ink bottles



Replaceable Ink Packs

## Space Savings

Epson Technical Printers are compact and easy to fit in most workspaces. Desktop or floor standing models are available depending on the user's requirements.



# RELIABLE AND USER-FRIENDLY

## Robust Security Features

### Confidential Job

Prevent unattended prints by sending print jobs with a PIN for release in the panel.

### IP Address Filter

Secure the printer by preventing unauthorised devices from connecting to it.

### Panel Lock

Prevent the change of administrator settings by setting an admin password.

### Access Control

Prevent unauthorised usage of the printer by controlling access for up to 10 user accounts.

### LDAP Address Book For MFP model only

Reduce the risk of sending scanned images to a wrong email destination with the use of information stored in the LDAP Server.

## User Convenience

Improve convenience with frontal access to all operations to load media and replacing consumables.

Maximise productivity with high-capacity ink cartridges, ample storage for consumables, and dual rollers to minimise operational downtime.



Full frontal operation

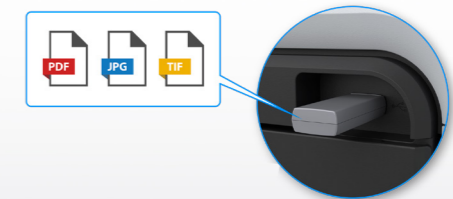
## Network Connectivity

Share the use of the printer with multiple users in the company with built-in Ethernet, Wi-Fi and Wi-Fi Direct connectivity. Wi-Fi Direct supports direct wireless connections from up to 8 devices to the printer without needing a router. Additionally, Apple devices can send print jobs directly to the printer without the need for installing drivers, thanks to Apple AirPrint® compatibility.



## PC-less Operation

Use the Technical Printers as a standalone machine for printing and scanning without a PC from USB storage devices and network folders.



\*Apple AirPrint is a trademark of Apple Inc.



## USER CONVENIENCE IN MIND

### Dual Roll Capability

Improve convenience of media handling by loading media of different type and sizes for automatic selection or use the second reel as take-up reel for unattended operation. Load roll paper automatically with ease using a drawer type automatic loading and size detection mechanism.



Take-up reel

Automatic roll switch

### MFP Scanning

Digitise and share documents of up to 36" via email and various storage locations with the built-in large format scanner. Make copies, with the capability to enlarge or reduce the size of documents.



### SSD Option\*

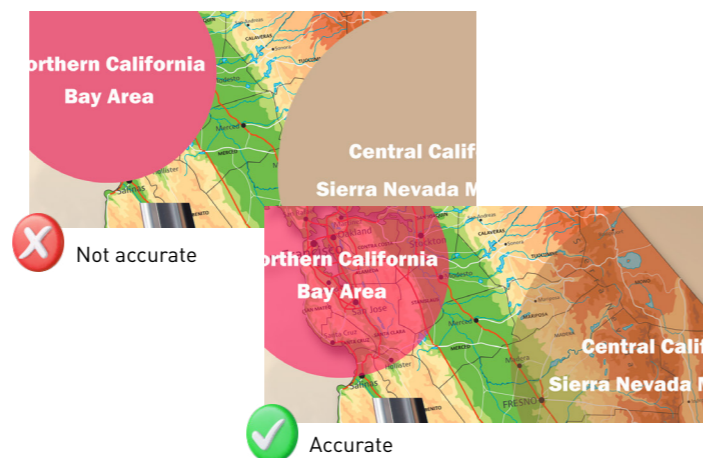
Improve the performance when handling large complex print data. The 960GB SSD enables the storage function which enables users to store print jobs for printing later. Data is secured by AES-256 protected by a TPM chip and folders can be protected with a password to prevent unauthorised access.

\*Available only to SC-T3730 Series, SC-T5730 Series and SC-T7730 Series.



### Supports Adobe PostScript®

Deliver prints with improved accuracy for transparent and overprint layers, as well as faster processing time for PDF and PS output. This includes additional support for printing of EPS, PDF, PS, TIFF, JPEG and Cals-G4 data.



## TAILORED TO SUIT EVERY NEEDS

### FOR EDUCATION SECTOR



Recommended model

#### SureColor SC-T3130X

##### Cost Efficient

Reduce the cost of printing with low cost, high capacity ink bottles.

##### Compact Package

Use the printer as a desktop printer making it convenient to place anywhere in a classroom environment.

##### Easy Maintenance

Use the printer at the site even in harsh dusty environments with its anti-dust design without the need for cleaning.

### FOR RETAIL SECTOR



Recommended model

#### SureColor SC-T3130M

##### Small Footprint

With its small footprint, the printer suitable for most back offices in the store area that has limited space.

##### Built-in Large Format Scanner

Using the built-in scanner, documents can be duplicated and enlarged for easy enlarged or convert large documents up to 24" into digital format.

##### Durable Prints

UltraChrome XD2 pigment inks deliver durable prints that are smudge, fade and water resistant which are suitable for use in harsh conditions.

### FOR ARCHITECTURE SECTOR



Recommended model

#### SureColor SC-T5430M

##### Fast and Precise

Produce quick and accurate prints with PrecisionCore printhead technology.

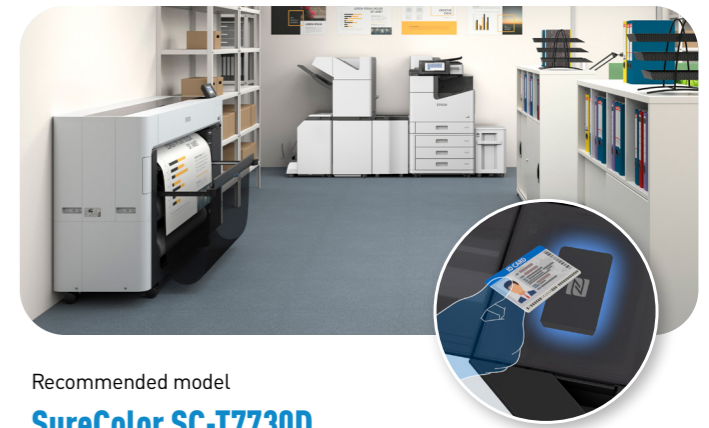
##### Convenient Digitisation and Enlargement

Duplicate, enlarge and digitise documents up to 36" with the built-in large format scanner.

##### Durable Prints

Produce prints that can withstand harsh weather conditions when brought to the site with UltraChrome XD2 Pigment Inks.

### FOR GOVERNMENT SECTOR



Recommended model

#### SureColor SC-T7730D

##### Uncompromised Security

Enhance security by preventing unauthorised usage of the printer with Authentication Function. Epson Print Admin supports the use of ID cards readers, reports can be generated to trace and audit usage.

##### Improved Productivity

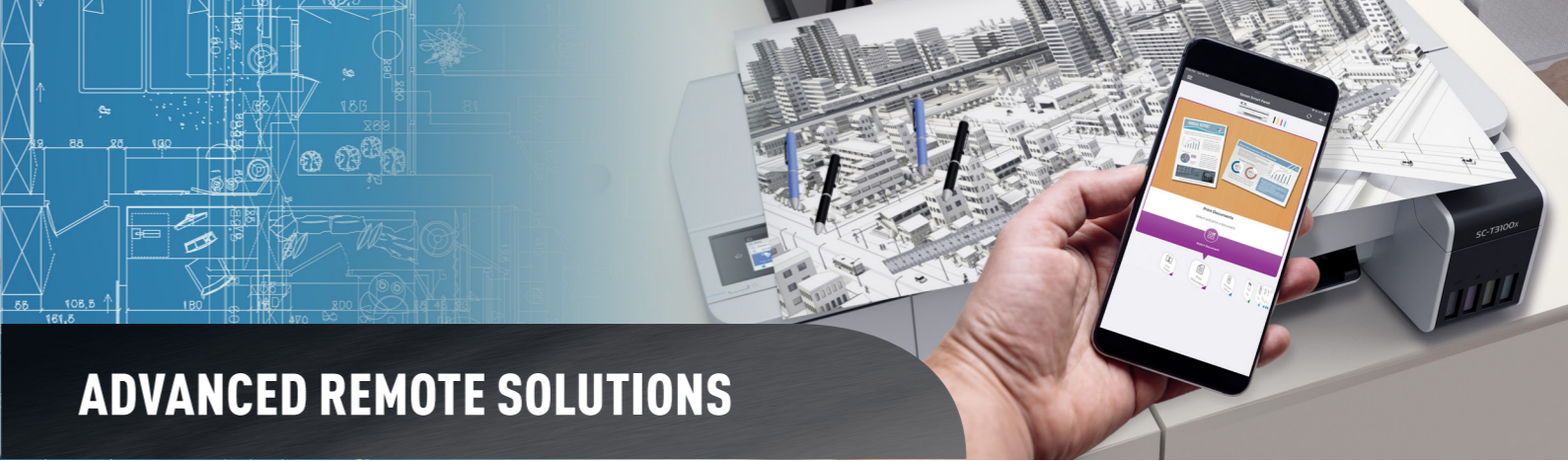
Produce prints continuously without intervention with high capacity inks and dual roll capability.

##### High Print Accuracy

Produce prints with exceptional accuracy down to the finest details with Epson PrecisionCore MicroTFP printhead technology.



## DOCUMENT MANAGEMENT SOLUTIONS



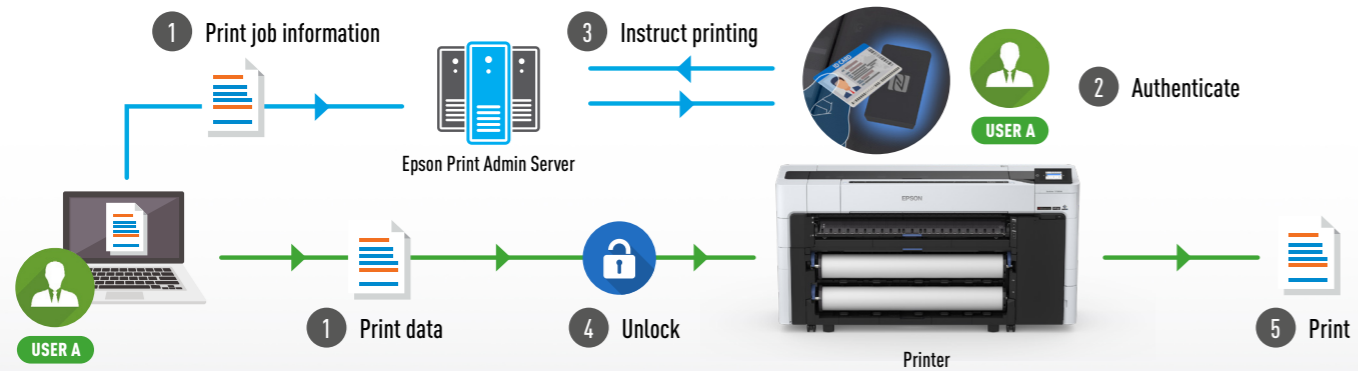
## ADVANCED REMOTE SOLUTIONS

### Print Management

Enhance security with Epson Print Admin\* thru authentication function. Distribute documents conveniently and securely with "Scan to Me", set up policies and quota to reduce cost of printing. A serverless version is available for organisations that require simple print management.



Epson Print Admin



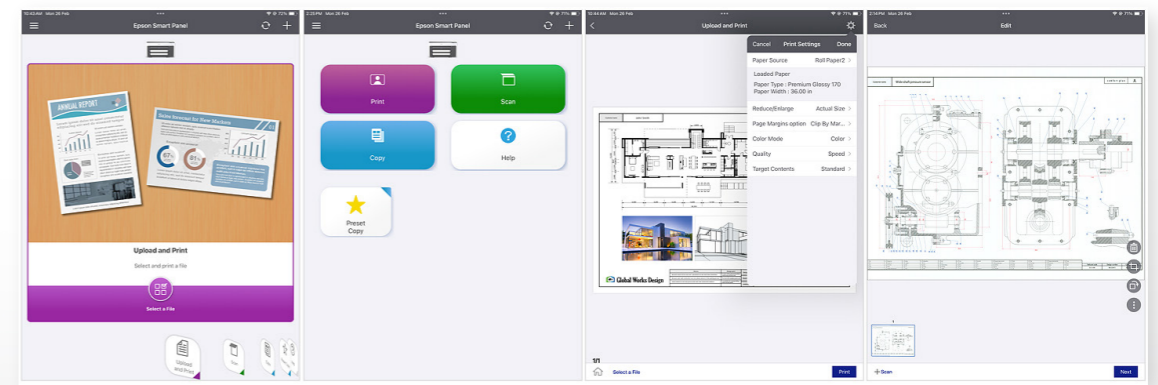
\*Epson Print Admin requires a Windows Server. Epson Print Admin Serverless requires SSD Option.

### Epson Smart Panel

Print and scan directly on your mobile devices with Epson Smart Panel mobile app.



Epson Smart Panel

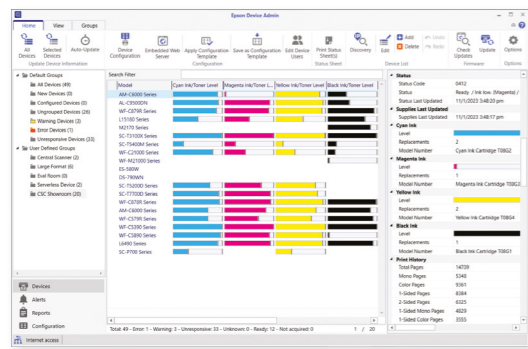


### Fleet Management

Manage a fleet of devices with Epson Device Admin. Deploy and monitor the status with a single application. Update, troubleshoot efficiently and generate reports for accountability and cost savings.



Epson Device Admin

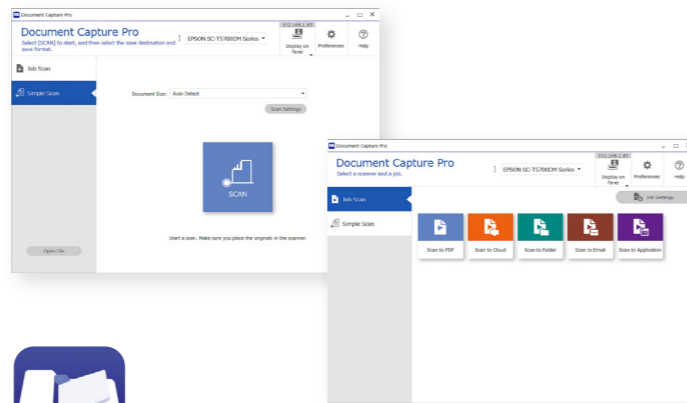


### Document Solution

Digitise documents and large artworks with Document Capture Pro. Preset up to 30 customisable workflows for one touch operation on the panel. Output documents to various locations and collaborate by sharing them thru cloud storage services.



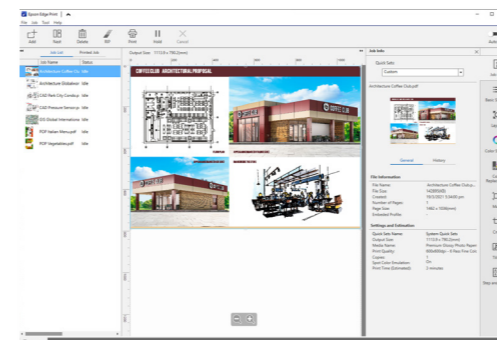
Document Capture Pro



### Epson Raster Image Processor (RIP)

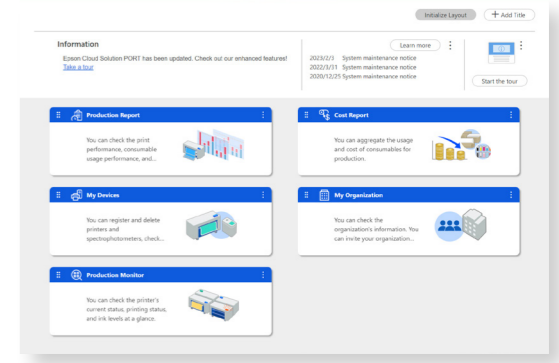
An easy to use software RIP provided by Epson to output the best print quality by maximising the printer's capability with advanced imaging processing technologies. High print performance and accuracy with Adobe PS engine to process PostScript data, the software is able to handle job and colour management for improved efficiency and colour accuracy.

Epson Edge Print Pro



### Production Monitor

Monitor the production status and consumable levels from any location with Epson Cloud Solutions PORT. Generate cost reports to charge customers accurately, manage devices and troubleshoot issues remotely.



**EPSON T-SERIES  
TECHNICAL PRINTERS**

**SINGLE FUNCTION**

	ENTRY			MID		HIGH					
	SC-T3130 SC-T3130N	SC-T3130X	SC-T5130	SC-T3435	SC-T5435	SC-T3730E	SC-T3730DE	SC-T3730D	SC-T5730D	SC-T7730D	SC-T7730DL

PAPER HANDLING	Roll		Single	Single	Single	Single	Single	Single	Dual	Dual	Dual	Dual	Dual	Dual
	Maximum Roll Width		24"	24"	36"	24"	36"	24"	24"	24"	36"	44"	44"	
	Roll Diameter		2" Core / 110 mm			2" or 3" Core / 170 mm		2" or 3" Core / 170 mm						
	Maximum Roll Weight		3.0 kg		5.9 kg	8.0 kg	12 kg	6.8 kg		10.5 kg	12.5 kg			
	Support Media Thickness	Roll	0.05 mm – 0.21 mm			0.08 mm – 0.3 mm		0.07 mm – 0.8 mm						
		Cutsheet	0.12 mm – 0.27 mm			0.08 mm – 0.3 mm		Cut Sheet: 0.07 mm – 0.8 mm, Poster Board: 0.8 mm – 1.5 mm						
	Paper Width Support	Roll	329 mm – 610 mm		297 mm – 914 mm	254 mm – 610 mm	254 mm – 914 mm	254 – 610 mm		254 – 914 mm	254 – 1,118 mm			
		Cutsheet	210 mm – 610 mm		210 mm – 914 mm	210 mm – 610 mm	210 mm – 914 mm	203 – 610 mm		203 – 914 mm	203 – 1,118 mm			
	Paper Path		Roll, Cut Sheet (Auto Sheet Feeder)			Roll, Cut Sheet (Manual Feed)		Roll, Cut Sheet (Manual Feed), Poster Board (Manual Feed)						
	Borderless Print		No			Yes		Yes						
PRINTER SPECIFICATIONS	Print Speed (A1)		34 sec	31 sec	25 sec	22 sec	23 sec	23 sec	23 sec	23 sec	23 sec	23 sec	23 sec	
	Print Language		ESC/P Raster, HP-GL/2, HP RTL			ESC/P Raster, HP-GL/2, HP RTL		ESC/P Raster, HP-GL/2, HP RTL		ESC/P Raster, HP-GL/2, HP RTL, Adobe PostScript 3, Adobe PDF 1.7				
	Memory		1 GB			1 GB		6 GB		Physical: 6 GB (Printer) + 4 GB (Adobe PostScript unit)				
	Storage		-			-		SSD Option (960 GB)						
	Connectivity		USB, Ethernet, Wi-Fi, Wi-Fi Direct			USB, Ethernet, Wi-Fi, Wi-Fi Direct		USB, Ethernet, Wi-Fi, Wi-Fi Direct						
	USB Direct Print Formats		-			JPEG, TIFF, Epson Scanned PDF		JPEG, TIFF, Epson Scanned PDF		JPEG, TIFF, PDF				
	Mobile Print		-			-		Yes (Epson Smart Panel)						
	Ink Capacity		Black: 50ml / 80ml Colour: 26ml / 50ml	140ml	Black: 50ml / 80ml Colour: 26ml / 50ml	110ml / 350ml / 700ml		110ml / 350ml / 700ml				1,600 ml		
	Ink Type		UltraChrome XD2 Pigment Ink	Black: Pigment Ink, Colour: Dye Ink	UltraChrome XD2 Pigment Ink	UltraChrome XD2 Pigment Ink		UltraChrome XD3 Pigment Ink						
	Ink Colours		Cyan, Magenta, Yellow, Black			Cyan, Magenta, Yellow, Black		Cyan, Magenta, Yellow, Red, Matte Black, Photo Black						
Dimensions (W x D x H)		970 x 913 x 982 mm (With stand)	970 x 245 x 577 mm (With stand)	1,268 x 913 x 811 mm (With stand)	1,080 x 750 x 1,060 mm	1,385 x 750 x 1,070 mm	1,365 x 499 x 975 mm		1,645 x 499 x 975 mm	1,848 x 499 x 975 mm				
Weight (kg)		38 kg (With stand)	29 kg (With stand)	46 kg (With stand)	64 kg	76 kg	118.1 kg		136.8 kg	155 kg	165 kg			

**EPSON T-SERIES  
TECHNICAL PRINTERS**  
MULTI FUNCTION









ENTRY		MID	HIGH	
SC-T3130M	SC-T5130M	SC-T5430M	SC-T5730DM	SC-T7730DM
				

**SOFTWARE  
COMPATIBILITY CHART**

ENTRY	MID	HIGH	
<ul style="list-style-type: none"> <li>SC-T3130</li> <li>SC-T3130N</li> <li>SC-T3130X</li> <li>SC-T5130</li> <li>SC-T3130M</li> <li>SC-T5130M</li> </ul>	<ul style="list-style-type: none"> <li>SC-T3435</li> <li>SC-T5435</li> <li>SC-T5430M</li> </ul>	<ul style="list-style-type: none"> <li>SC-T3730E</li> <li>SC-T3730DE</li> <li>SC-T3730D</li> <li>SC-T5730D</li> <li>SC-T7730D</li> <li>SC-T7730DL</li> </ul>	<ul style="list-style-type: none"> <li>SC-T5730DM</li> <li>SC-T7730DM</li> </ul>

PAPER HANDLING	Roll		Single	Single	Single	Dual	Dual
	Maximum Roll Width		24"	36"	36"	36"	44"
	Roll Diameter		2" Core / 110 mm		2" or 3" Core / 170 mm	2" or 3" Core / 170 mm	
	Maximum Roll Weight		3.0 kg	5.9 kg	12 kg	10.5 kg	12.5 kg
	Support Media Thickness	Roll	0.05 mm – 0.21 mm		0.08 mm – 0.3 mm	0.07 mm – 0.8 mm	
		Cutsheet	0.12 mm – 0.27 mm		0.08 mm – 0.3 mm	Cut Sheet: 0.07 mm – 0.8 mm Poster Board: 0.8 mm – 1.5 mm	
	Paper Width Support	Roll	329 mm – 610 mm	297 mm – 914 mm	254 mm – 914 mm	254 mm – 914 mm	254 mm – 1,118 mm
		Cutsheet	210 mm – 610 mm	210 mm – 914 mm	210 mm – 914 mm	203 mm – 914 mm	203 mm – 1,118 mm
Paper Path		Roll, Cut Sheet (Auto Sheet Feeder)		Roll, Cut Sheet (Manual Feed)	Roll, Cut Sheet (Manual Feed), Poster Board (Manual Feed)		
Borderless Print		No		Yes	Yes		
Print Speed (A1)		34 sec	31 sec	22 sec	23 sec	23 sec	
Print Language		ESC/P Raster, HP-GL/2, HP RTL			ESC/P Raster, HP-GL/2, HP RTL, Adobe PostScript 3, Adobe PDF 1.7		
Memory		1 GB + 8 GB* (*The 8 GB memory is only for scanning functions)			Physical: 6 GB (Printer) + 3 GB (Scanner) + 4 GB (Adobe PostScript unit)		
Storage		-			Built-in SSD		
Connectivity		USB, Ethernet, Wi-Fi, Wi-Fi Direct				USB, Ethernet, Wi-Fi, Wi-Fi Direct	
USB Direct Print Formats		JPEG, TIFF, Epson Scanned PDF				JPEG, TIFF, PDF	
Mobile Print		-			Yes (Epson Smart Panel)		
Ink Capacity		Black: 50ml / 80ml Colour: 26ml / 50ml		110ml / 350ml	110ml / 350ml / 700ml		
Ink Type		UltraChrome XD2 Pigment Ink			UltraChrome XD3 Pigment Ink		
Ink Colours		Cyan, Magenta, Yellow, Black				Cyan, Magenta, Yellow, Red, Matte Black, Photo Black	
Dimensions (W x D x H)		970 x 974 x 696 mm	1,268 x 975 x 696 mm	1,385 x 966 x 1,070 mm	1,645 x 499 x 975 mm	1,848 x 499 x 975 mm	
Weight (kg)		44.4 kg	54.8 kg	89 kg	150 kg	166 kg	
SCAN	Maximum Scan Size		609.6 x 2,720 mm	914.4 x 2,720 mm	914.4 x 30,480 mm	914.4 x 30,480 mm	
	Scan Speed		4.5 ips / 1.5 ips		7.5 ips / 4.5 ips	4.5 ips (Colour) / 10 ips (Mono)	
	Scan Destinations		Network Folder, FTP, Email, USB Storage			Network Folder, FTP, Email, USB Storage, Document Capture Pro	
	Scan Output Formats		JPEG, PDF, PDF/A, Multi-TIFF (B&W only)				JPEG, PDF, PDF/A, Multi-TIFF
COPY	Scaling		25 to 400%			25 to 755%	
	Maximum Copies		99 Copies			99 Copies	

SOFTWARES

SOFTWARES	ENTRY	MID	HIGH (Left)	HIGH (Right)
DEVICE MANAGEMENT				
 Epson Device Admin	✓	✓	✓	✓
PRODUCTION MONITOR				
 Epson Cloud Solution PORT	✓	✓	✓	✓
PRINT MANAGEMENT				
 Epson Print Admin			✓	✓
 Epson Print Admin Serverless			✓ Requires optional SSD	✓
SCAN APPLICATION				
 Document Capture Pro				✓
MOBILE SOLUTION				
 Epson Smart Panel			✓	✓
ACCOUNTING				
 LFP Accounting Tool		✓	✓	✓
PRODUCTIVITY				
 Epson Print Automate	✓	✓	✓	✓
 LFP Print Plug-in for Office	✓	✓	✓	✓
RIP				
 Epson Edge Print Pro			✓	✓

# EPSON

©2024 Epson Singapore Pte Ltd. All Rights Reserved. Reproduction in part or in whole, without the written permission from Epson, is strictly prohibited.

EPSON is a registered trademark of Seiko Epson Corporation.

All other product and company names used herein are for identification purposes only and are the trademarks or registered trademarks of their respective owners.

Epson disclaims any and all rights in those marks. Projected images shown herein are simulations. The actual product design and contents may vary. Specifications are subject to change without notice and may vary between countries. Please check with local Epson offices for more information.


---

Dealer's Stamp

---

Information correct at time of printing.  
Printed April 2024

Find out more at [www.epson.com.sg/technical-printing](http://www.epson.com.sg/technical-printing)

 EpsonSingapore  EpsonSingapore  EpsonSoutheastAsia  Epson Singapore  EpsonSingapore

**Epson Singapore Pte Ltd**  
**Epson Customer Care Center**

438B Alexandra Road, Block B Alexandra Technopark, #04-01/04, Singapore 119968. Tel: (65) 6586-5500  
100G Pasir Panjang Road, #01-09 Interlocal Centre, Singapore 118523. Epson Helpdesk: 800 120 5564. Please refer to [www.epson.com.sg/contact](http://www.epson.com.sg/contact) for opening hours.