

LARGE FORMAT PHOTO PRINTERS
SURECOLOR SC-P5330/P6530E/P6530D/P7530/
P8530D/P8530DL/P8530DM/P9530/P20070/P20530

EPSON

EPSON



SPEARHEADING INDUSTRIAL STANDARDS IN PHOTOGRAPHIC REPRODUCTION.

Impeccable print quality in spectacular accuracy with Epson's P-series printers.

When you require exemplary prints that are top-class in quality, precision, and colour accuracy, trust Epson's P-series printers to weave their magic and deliver just what you need. Equipped with Epson's proprietary PrecisionCore™ MicroTFP printheads, the SureColor P-series photographic printers revel in their precise and reliable print productivity. Coupled with colour-accurate reproduction using genuine UltraChrome PRO 6 inks, you can now get gallery-quality picturesque prints easily and efficiently.

ENGINEERED FOR good



Highest Standards in Print

The additional grey ink in the UltraChrome PRO 6 inks offers smooth and natural colour gradation in every print.

Installation Flexibility

Flat top design allows for easy placement of printer in challenging and narrow spaces, giving businesses more options in installation.

Boosted Efficiency

Improved print speeds and continuous automatic printing with dual rollers* help ensure high productivity with minimal downtime.

Find out more at www.epson.com.sg/gobig-photo

EpsonSingapore EpsonSingapore EpsonSoutheastAsia Epson Singapore EpsonSingapore

Epson Singapore Pte Ltd 438B Alexandra Road, Block B Alexandra Technopark, #04-01/04, Singapore 119968. Tel: (65) 6586-5500
Epson Customer Care Center 100G Pasir Panjang Road, #01-09 Interlocal Centre, Singapore 118523. Epson Helpdesk: 800 120 5564. Please refer to www.epson.com.sg/contact for opening hours.

Information correct at time of printing. Printed September 2024.

*Selected models.

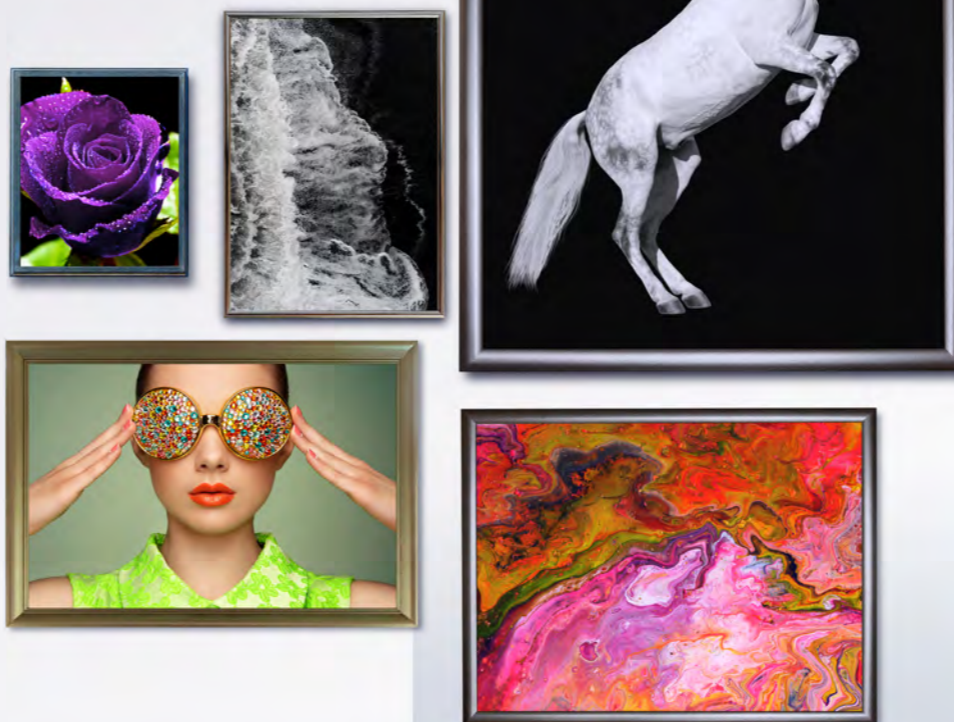
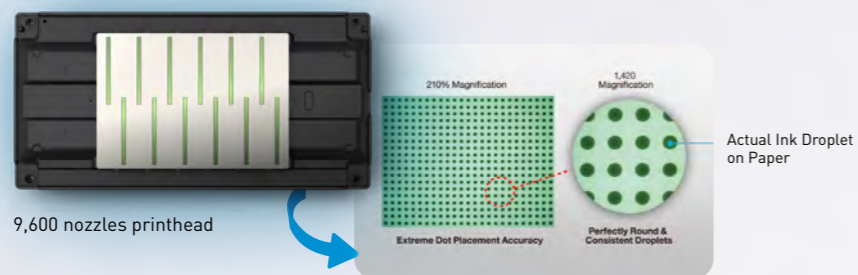
Experience the Magic

Epson SureColor P-series photographic printers deliver superior detail-accurate images thanks to the latest colour printing technologies. With Epson's PrecisionCore™ Thin Film Piezo (TFP) printhead and UltraChrome™ all-pigment ink sets, uncompromising image consistency and immaculate colour quality are evident in every print. The P-series printers are integrated with industry-leading software solutions, which create seamless work processes that increase efficiency for businesses while meeting the demanding needs of the photo, proofing and graphic arts industry.

Unmatched Precision

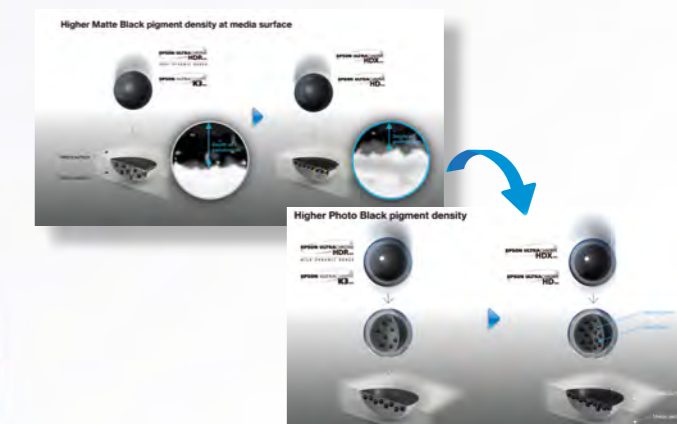


Epson's PrecisionCore™ technology delivers unparalleled colour-matching capability in every print, enabling ultra-precise control of dot size, shape and placements with its revolutionary printhead. The print nozzles can also produce a wide variety of droplet sizes, allowing fine detail and quick filling of larger areas at a single pass.



Latest Generation of Professional-Quality Pigment Inks

Epson's revolutionary Ultrachrome HD inks ensure colour-accurate prints, delivering stunning vibrancy in every photo. With the new addition of Photo Black and Matte Black inks, images are printed with greater colour depth; especially when printing black and white images. In addition, the improved black ink density and higher D-Max value, the new black ink is 1.5 times denser than the previous ink formulation, providing significant improvements to the overall contrast ratio and optical clarity.



Photographic Perfection and Accuracy

More vibrant colour, more detailed tonal gradation

There are many variables in the colour reproduction process generated by the Epson P-series and any one of which may affect the quality of the PANTONE® colour simulation, including: type of driver or RIP used, type of paper used, type of ink, toner or colourant used, resolution, rendering intent used, dot structures/halftones/screening, print engine and other print settings.

*PANTONE® is the property of Pantone LLC. 99% coverage of PANTONE® FORMULA GUIDE solid coated palette based on Epson Proofing Paper White Semi-matte printed with Epson printer driver at 2880x1440dpi. PANTONE® coverage may vary when printed with a third-party RIP.

Unparalleled 99% PANTONE® Coverage

Utilising a three-level black ink technology that simultaneously employs Grey, Light Grey and Light Light Grey, the innovative Epson UltraChrome pigment inks produce brilliant black density and grey balance in sharp definition. On the media surface, the UltraChrome HDX, HD matte, and photo black inks achieve a much higher pigment density, making sure that the pigments do not penetrate too deep when printing on third-party media.

With the newly-added Violet ink[^], the Ultrachrome HDX ink achieves a wider colour gamut, allowing it to hit spot and client-specific colours accurately, achieving an unparalleled 99% max certified PANTONE® coverage*. The various ink configurations also aid in achieving impeccable print quality for both colour and monochrome reproductions.

[^]For selected models.

Epson AccuPhoto HDR Screening

- Wider colour coverage with vivid colour reproduction
- Less chance to print monochrome images
- Wider colour coverage with detailed reproduction of dark-colour tonal gradations
- Decent (more than 4-colour colour coverage with more detailed reproduction of dark-colour tonal gradations)

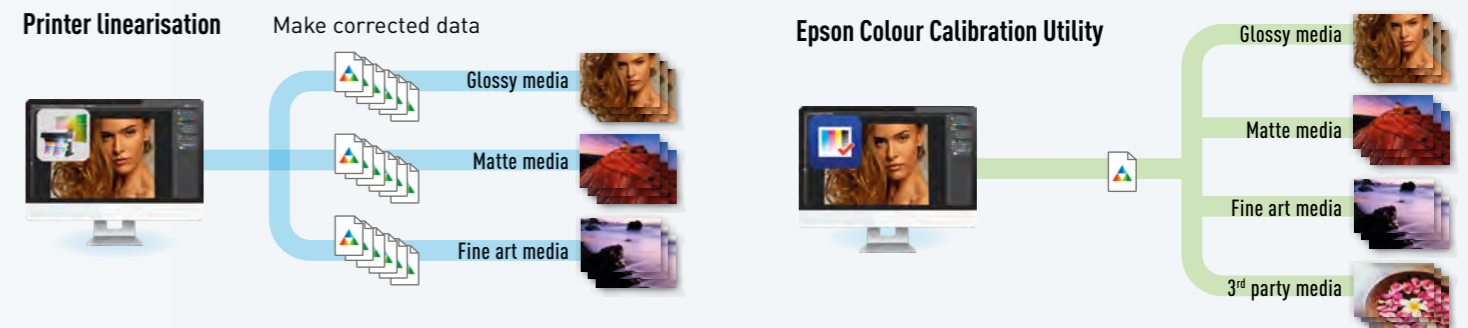
Advanced ten-colour screening algorithm delivering prints with superior colour and clarity, producing extremely fine blends and subtle photographic transitions.

With Epson AccuPhoto HDR Screening, each print contains extremely accurate highlight-to-shadow details with no visible photographic graininess.

Efficient Workflow Solution

Epson Colour Calibration Utility

To work more efficiently across multiple networked printers, the P-series printers are equipped with Epson Colour Calibration Utility, which measures colour density and concentration, allowing printer network management from a central point. This makes calibrating your printers easier and faster as the derivatives can calibrate their colours based on the base printer by transferring the colour chart, increasing overall productivity.



Epson Print Layout Software

This plug-in for Adobe Photoshop, Lightroom, and Nikon ViewNX-i includes a set of template layouts and supports ICC soft proofing, colour production, preview, custom media registration and panorama layouts. Along with a set of colour modes, including advanced black and white, to create different finishes and moods. The software operates via intuitive and consistent controls including slider bars and colour wheels for precise and easy adjustments.

Custom media registration
One-click selection of custom media settings

Colour reproduction preview
ICC profile soft proofing

Template layout

The Efficient Remote Monitoring System for Large Format Printers



Epson Cloud Solution PORT

Managing your printers is made easy and hassle-free with Epson's Cloud Solution PORT. Operators can monitor equipment and printer fleet across different sites from production floor or remotely, on PC or a mobile device without fuss. Boost operational efficiency by controlling, analysing and managing your printer fleet centrally from one intuitive interface while troubleshooting any rare issues.

Benefits of Epson Cloud Solution PORT:

Real-Time Fleet Monitoring & Issue Management

Epson Production Monitor reduces printer fleet downtime by providing real-time updates on print job errors and disruptions, and allows remote monitoring of your fleet's status and issues from iOS and Android devices.

Enjoy cost transparency

With our dynamic user-friendly Cost Reporting feature, you can easily check and customise expenses, and adjust views effortlessly for multiple units and specific criteria.

Enjoy peace of mind with end-to-end security

Epson is committed to developing robust and secure solutions, engaging service providers that meet global security standards and safeguarding our customer's data privacy.



Product Positioning Chart



Brilliance in Every Print

SC-P5330



A compact photo printer that does not compromise on quality, the SC-P5330 is your perfect solution for impeccable colour reproduction in every print. Utilising Epson's Micro Piezo® printhead and UltraChrome™ PRO 10 all-pigment ink set, every image is dynamic and vibrant, with detailed consistency in spectacular colours.

Consistently Vivid

Experience an upgraded level of image perfection with the SC-P5330, which utilises the UltraChrome™ PRO 10 ink set with Violet for enhanced blue reproduction and a wider colour gamut. This synergises perfectly with the printer's Carbon Black and Black Enhance Overcoat print modes that provide higher levels of black density and increased contrast with smooth gradations.



Dedicated Black Ink Channels

Achieve continuous printing with the dedicated Matte Black and Photo Black ink channels.



Convenience Driven

Epson ColorBase Software

An easy to use colour calibration tool that meets the demands of photographers and graphic arts professionals, Epson ColorBase provides consistent colour quality throughout the printing process.

Supporting colour calibration from print to print and/or printer to printer, Epson ColorBase makes print management easy and reliable. It enhances remote printing applications with critical colour calibration requirements and keeps a history of calibration files for easy reference.

Epson Print Layout Software

With easy access to all major functions, the Epson Print Layout software also helps to manage print layouts and colours with standard bundled industry-leading RIP software. Coupled with high-precision media feed technology, operators are ensured of smooth operation of their printers even when unattended.

Archival Prints

Standing the test of time, our Fine Art prints revel in its archival properties with colours lasting up to 60 years of light fastness*.



*Based on JEITA CP-3901A's standard for the measurement: glossy A4 paper, temperature at 23°C and humidity at 50%.

ULTRACHROME
PRO 10 INK

Media Width
17"

Explosion of Vivid Colours With Efficiency and Excellence

SC-P7530/P9530



Widest Colour Gamut

Equipped with Epson's newly-developed UltraChrome PRO 12 inks, the SC-P7530 and SC-P9530 delivers a wide range of colours, reproducing every detail with unrivalled brilliance and accuracy. With the all-new 2.6-inch PrecisionCore MicroTFP printhead, these printers boast a productive workflow with dedicated channels for Matte and Photo Black inks.



Combining efficiency and quality, the SC-P7530 and SC-P9530 are fitted with PrecisionCore MicroTFP printhead, printing at 300dpi resolution with 12 channels. With smoother gradations and accurate texture reproduction, image quality is enhanced by Matte Black, Photo Black and Light Light Black inks, which are achieved through black enhancement overcoating technology.

Wide Range of Applications

Designed to print with a wide range of applications, professional photographers, fine art reproduction, packaging and contract proofers can now easily print with convenience. Even those that demand the highest print quality can unleash their creative freedom and print on a wide variety of media, including fine art papers, canvases and photo papers, without compromising on quality. The SC-P7530 and SC-P9530 photo printers support printing of up to 44" width media.

*Applicable to SC-P9530 only.



Designed to Last

Epson's SC-P7530 and SC-P9530 photo printers come with additional features such as a sealed roll media door for a dust-proof design and an integrated LED light to view projects while printing.

Catering to creatives that demand the most outstanding standards in printing, the SC-P7530 and SC-P9530 deliver perfect colour reproduction by leveraging on Epson's new UltraChrome PRO 12 pigment inks and PrecisionCore MicroTFP printhead technology. Ideal for Photo, Fine Art, Graphic Design and Proofing applications, be amazed by the explosion of vibrancy and precision in every print.

ULTRACHROME
PRO 12 INK

Media Width
24"
SC-P7530

Media Width
44"
SC-P9530

Deliver Top Notch Gallery-quality Prints

SC-P6530E/P6530D

Accurate Colour Reproduction

Delivering superb image quality with true-to-life colour accuracy, Epson's UltraChrome PRO 6 inks bring prints to a whole new level of professionalism.

Print That Last

Epson's UltraChrome PRO 6 inks are water-, smudge- and fade-resistant, allowing prints to be durable and long-lasting.



Water and smudge resistant

Fade resistant

Epson Smart Panel

With the Epson Smart Panel app, users can set up, monitor, print and scan through an iOS or Android device.

Conveniently set up, monitor, print, and scan on your Epson printers and easily commence print jobs from your fingertips. With a wide variety of configuration features, you can also customise the app according to your requirements into an all-in-one management app.



Seamless Operation For SC-P6530D only

Operating with top-tier reliability, the Epson SureColor SC-P6530D saves time and manpower with the Automatic Roll switching, simplifying the loading of new media rolls. Minimising downtime, the seamless operation ensures continuous printing and smooth operation.



Automatic Roll-Media Feed



Automatic Roll Switch

Epson's SureColor SC-P6530E and SC-P6530D employ an unprecedented level of innovative technology. Coupling PrecisionCore™ technology with UltraChrome PRO 6 Inks, high accuracy and resolution can be achieved allowing the finest details to stand out.

ULTRACHROME
PRO 6 INK

Media Width
24"

Transform Ideas Into Vibrant True-To-Life Prints

SC-P8530D/DL/DM



Delivering stunning picturesque prints in striking colours, Epson's SC-P8530D/P8530DL/P8530DM transform your ideas into vivid larger-than-life pieces of art with detailed precision. With high installation flexibility and seamless work process, businesses can now increase their productivity effortlessly with Epson's large format photographic printer.

Gallery Standards

6-colour ink set delivers exceptionally wide colour gamut and high black density, producing photographic prints that are of gallery standards.



Photographic prints



Black-and-White prints

Wide Variety of Media

Professional printing can be done on a variety of media, such as artist canvas or premium photo papers.



Matte media



Gloss media

Up to 44" Wide Dual Roll Design

Management of prints is much easier with the dual roll 44" wide-format media configuration that maximises productivity and increases efficiency.



Smoother Gradation for Professional Perfection

Utilising the innovative two-level black ink technology that simultaneously employs Photo Black and Matte Black, Epson's UltraChrome PRO 6 inks produce rich true-to-life black density and grey balance to ensure top-notch quality in every print. Generating smooth gradients, transitions, and neutral grayscale in every photo.



ULTRACHROME
PRO 6 INK

Media Width
44"

Unparalleled Vividness and Productivity



Epson's SC-P20070 photo printer leads the industry with its high performance, reliable and swift printing. Equipped with the revolutionary PrecisionCore MicroTFP printhead and UltraChrome™ PRO ink, experience magnificence in every print at affordable running costs.

SC-P20070

State-of-the-Art Standards

No more worrying about high-volume quality print at fast speeds. Thanks to Epson's UltraChrome PRO archival ink technology and the innovative PrecisionCore MicroTFP, expect remarkably vivid and sharp prints that are gallery standards and last up to 200 years. With four levels of grey, your prints will feature accurate transitions with very low grain even at the fastest print modes.



Cost-Effective Production

Operating with reduced power consumption, businesses stand to gain with the reliable SC-P20070 printer as it requires minimum maintenance. Coming with large, cost-effective ink cartridges of up to 700ml, operators can also take advantage of the various configurations, such as an optional Postscript, Auto Take-Up system, and user selectable warranty and support packages.

Efficiency Secured

Built to minimise downtime during printing, the SC-P20070 comes with a new media feeding system that can keep up with high-volume prints without compromising on quality. Achieve maximum output with the Realtime Media Adjustment and Feedback System, and Media Inductive Roller System, allowing the printer to operate smoothly even when unattended.



Media feed rollers

Media inductive rollers

Range of Media



The SC-P20070 is a floor-standing printer with a 64" (1,626mm) wide carriage and improved flexible media handling, supporting basic bond paper, photo paper, transparent film, translucent back-lit and specialist synthetic media. It also accepts roll media via a spindle mounting with integrated tension adjustment and has a high-speed auto-cutter.

ULTRACHROME
PRO INK

Media Width
64"

Industry-Grade Precision Printing

SC-P20530



The Epson SureColor SC-P20530 is a 64" large-format printer designed for professional photographers and fine art reproduction. It features PrecisionCore MicroTFP technology and a 12-colour UltraChrome PRO 12 ink set for exceptional detail, colour accuracy, and durability. With advanced media handling, high-capacity ink, and seamless connectivity, it ensures superior print quality and productivity for high-end print shops.

Wider Colour Gamut with 12-Colour Ink Set

Utilising UltraChrome PRO 12 ink with the addition of Orange, Green, and Violet colours, the SC-P20530 offers a wider colour gamut, making it ideal for highly accurate and vibrant fine art and photographic prints.



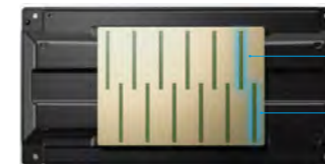
10-colour ink set



12-colour ink set

PrecisionCore MicroTFP Printhead

With two additional lines supporting the 12-colour ink set and 9,600 nozzles, this printer features dedicated channels for PK and MK black, reducing both printing time and ink consumption for greater efficiency.



Two additional lines support the 12-colour ink set.

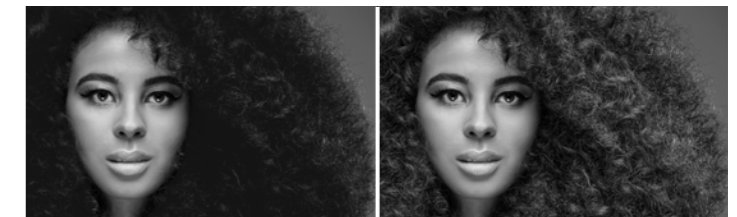
99% PANTONE® Coverage

Achieve unparalleled colour accuracy and impeccable print quality for both colour and monochrome reproductions.

Superior Black Enhancement

Enhanced black reproduction with Black Enhanced Overcoat (BEO) mode uses Light Grey ink to improve black density, contrast, and tonality, while reducing bronzing*, making it ideal for high-quality black and white fine art photos.

*Only on glossy paper.



Overcoat OFF

Overcoat ON

Increased Productivity and Usability

Boasting a 1.6L bulk ink system for continuous printing with fewer changes and an intuitive 4.3-inch touchscreen display, this printer offers businesses both operational efficiency and reduced environmental impact.



1.6L Ink Packs

ULTRACHROME
PRO 12 INK

Media Width
64"

INK & OPTIONS COMPATIBILITY CHART

PRINTER MODELS			SC-P5330	SC-P6530/P8530/P8530D	SC-P8530DL	SC-P7530/P9530	SC-P20070	SC-P20530 NEW
MAINTENANCE BOX			T55V / C13T619000	SC-P6530/P8530: T6997 / C13S210116 SC-P8530D: S210115 / C13S210115	S210115 / C13S210115	T6997 / C13T699700	T6193 / C13T619300	T6193 / C13T619300
INK TYPE (T-CODE / MODEL NUMBER)			T55V	T50S	T50S	T44V (350ml) / T44N (700ml)	T44N	T56J
200ML Ink Cartridge	Photo Black	●	C13T55V100					
	Cyan	●	C13T55V200					
	Vivid Magenta	●	C13T55V300					
	Yellow	●	C13T55V400					
	Light Cyan	●	C13T55V500					
	Vivid Light Magenta	●	C13T55V600					
	Grey	●	C13T55V700					
	Matte Black	●	C13T55V800					
	Light Grey	●	C13T55V900					
	Violet	●	C13T55VD00					
350ML Ink Cartridge	Grey	●		C13T48YE00				
	Photo Black	●		C13T48Y100		C13T44V100		
	Cyan	●		C13T48Y200		C13T44V200		
	Vivid Magenta / Magenta	●		C13T48Y300		C13T44V300		
	Yellow	●		C13T48Y400		C13T44V400		
	Light Cyan	●				C13T44V500		
	Vivid Light Magenta	●				C13T44V600		
	Light Grey	●				C13T44V700		
	Matte Black	●		C13T48Y800		C13T44V800		
	Light Light Grey	●				C13T44V900		
	Orange	●				C13T44VA00		
	Green	●				C13T44VB00		
	Violet	●				C13T44VD00		
700ML Ink Cartridge	Photo Black	●		C13T48R100		C13T44N100	C13T44N100	
	Light Light Grey	●				C13T44N900		
	Cyan	●		C13T48R200		C13T44N200	C13T44N200	
	Vivid Magenta / Magenta	●		C13T48R300		C13T44N300	C13T44N300	
	Yellow	●		C13T48R400		C13T44N400	C13T44N400	
	Light Cyan	●				C13T44N500	C13T44N500	
	Vivid Light Magenta	●				C13T44N600	C13T44N600	
	Light Black / Grey	●				C13T44N700	C13T44N700	
	Matte Black	●		C13T48R800		C13T44N800	C13T44N800	
	Dark Grey	●					C13T44NA00	
	Grey	●		C13T48RE00			C13T44N900	
	Orange	●				C13T44NA00		
	Green	●				C13T44NB00		
	Violet	●				C13T44ND00		
1600ML Ink Pack	Photo Black	●			C13T53J100			C13T56J100
	Cyan	●			C13T53J200			C13T56J200
	Vivid Magenta	●			C13T53J300			C13T56J300
	Yellow	●			C13T53J400			C13T56J400
	Light Cyan	●						C13T56J500
	Vivid Light Magenta	●						C13T56J600
	Grey	●			C13T53J700			C13T56J700
	Matte Black	●			C13T53J800			C13T56J800
	Light Grey	●						C13T56J900
	Orange	●						C13T56JA00
	Green	●						C13T56JB00
	Violet	●						C13T56JD00

SPECIFICATIONS

MODEL NUMBER	SC-P5330
SKU Number	C11CL14403
Printing Technology	On-Demand Inkjet (Piezo Electric), Variable-Sized Droplet Technology
Printing Method	Micro Piezo Printhead
Print Head	1,800 Nozzles (180 Nozzles x 10 Channels x 1 Head)
Nozzle Configuration	180 Nozzles (x2)
Black Colour	180 Nozzles (x8)
Maximum Resolution	5,760 x 1,440 dpi
Minimum Ink Droplet Volume	1.5pl
Printing Specifications	
Print Speed ¹	Speed Mode: 720 x 720dpi, 2.35 minutes Quality Mode: 1,440 x 720dpi, 4.25 minutes High Quality Mode: 1,440 x 1,440dpi, 6.35 minutes Max. Quality Mode: 5,760 x 1,440dpi, 13.00 minutes
Line Accuracy	±0.2% of the specified vector length or ±0.26mm (whichever greater)
Ink System	
Ink Type	Pigment Ink
Ink Brand Name	UltraChrome PRO10 Ink
Colour	Photo Black, Cyan, Vivid Magenta, Yellow, Matte Black, Grey, Light Grey, Light Cyan, Vivid Light Magenta, Violet
Ink Capacity	80ml (Bundled) / 200ml
Ink Case	Ink Cartridge
Paper Handling	
Paper Path	Roll, Cut Sheet (manual feed), Poster Board (manual feed), ASF Cassette
Paper Feed Method	Friction Feed (Auto switching between cut sheet and roll paper)
Maximum Roll Diameter ²	2 inch-core: Max ϕ 103 mm / 3 inch-core: Max ϕ 150 mm
Paper Size	20x25cm (8"x10"), A4, Letter, 254x305mm (10"x12"), JIS B4 (257x364mm), US B (11x17"), 11x14", A3, A3+, SuperW A3, B3, A2, US C (17"x22")
Paper Thickness	Roll: Roll Paper: 0.08 – 0.50mm Manual: Cut Sheet: 0.08 – 08mm, Poster Board: 09 – 1.5mm ASF: Cut Sheet: 0.08 – 0.8mm
Maximum Printable Length ³	Roll Paper: 18m, Cut Sheet: 610mm, Poster Board: 610mm
Borderless	8/10/11/14/16/17", A4/A3/A3+/A2, 300 mm: Roll Paper 10/14/16/17", A4/A3/A3+, 300 mm: Cut Paper & Poster Board
ASF Capacity: Max. Sheets	ASF Cassette: Plain paper 250 sheets (A4-A2/US-C)
Control Panel	
LCD Screen	4.3" Colour LCD & Electrostatic Touch Screen
Connectivity	
Interface	SuperSpeed USB ⁴ , 10BASE-T/100BASE-TX/IEEE802.11b/g/n/ac
Printer Language	ESC/P raster
Memory	1GB
Operating System	
PC Supported OS	Windows 7, 8, 8.1, 10, 11 or later Windows Server 2022, 2019, 2016, 2012R2, 2012, 2008R2, 2008
PC System Requirement	CPU: Core 2 Duo 3.05GHz or more, Memory: Memory more than 4GB, HDD: Free Space more than 64GB ⁴
Mac Supported OS	Mac OS X10.9.5 or later
Mac System Requirement	CPU: Core 2 Duo 3.05GHz or more, Memory: Memory more than 8GB, HDD: Free Space more than 128GB ⁵
Utility Software	
Bundled in CD	Windows - Printer Driver - EpsonNet Print - EpsonNet Setup - EpsonNet Config SE - Epson Manual Launcher - Epson Print Layout - Epson Edge Dashboard - Epson Media Installer - Epson ColorBase3 - Epson Device Admin - Device Status System (DSS) - EPSON SureLab Order Controller Mac - Printer Driver - Firmware Update - EpsonNet Config SE - Epson Manual Launcher - Epson Print Layout
Web Delivery	Windows - Installer Package (Install Navi) - Web Installer - Software Updater - Firmware Updater - Adobe ICC Profile - LFP Accounting Tool Mac - Installer Package - Web Installer - Software Updater - Firmware Updater - Uninstaller
Electrical Specifications	
Voltage	AC 100 – 240V, 50/60Hz
Rated Current	AC 100V 3.4AAC 100-240V 3.4-1.6A
Power Consumption	Operating: Approx. 42W, Ready: Approx. 17W, Sleep: Approx. 2.4W, Standby: Approx. 0.2W
Environmental Conditions	
Temperature	Operating: 10°C to 35°C / Storage: -20°C to 40°C
Humidity	Operating: 20% to 80% (no condensation), Storage: 5% to 85% (no condensation)
Dimensions & Weight	
Dimension (W x D x H)	863 x 1,134 x 405 mm
Weight	Approx. 53 kg

¹ Based on printing on A2 size Premium Glossy Photo Paper from starting pass to cut.

² Depending on the thickness of the paper, it is larger than the available outer diameter size. If roll paper is used, please confirm that it is within the outside diameter range.

³ Printable length is limited depending on restrictions of OSs or applications.

⁴ Compatible with the USB 3.0 specification.

⁵ For utility software, please refer to system requirements for each utility software.

Find out more at www.epson.com.sg/gobig-photo



Epson Singapore Pte Ltd 438B Alexandra Road, Block B Alexandra Technopark, #04-01/04, Singapore 119968. Tel: (65) 6586-5500
Epson Customer Care Center 100G Pasir Panjang Road, #01-09 Interlocal Centre, Singapore 118523. Epson Helpdesk: 800 120 5564. Please refer to www.epson.com.sg/contact for opening hours.

SPECIFICATIONS

MODEL NUMBER	SC-P7530	SC-P9530
SKU Number	C11CH12402	C11CH13402
Printing Technology	PrecisionCore Inkjet Technology, Variable-Sized Droplet Technology	
Printing Method	PrecisionCore MicroTFP Printhead	
Print Head	9,600 Nozzles (800 nozzles x 12 channels x 1 head)	
Nozzle Configuration	2,400 x 1,200 dpi	
Maximum Resolution	3.5pl	
Minimum Ink Droplet Volume		
Printing Specifications		
Print Speed	97 sec (Level 1) 122 sec (Default) Premium Glossy Photo Paper 170gsm A1 Size/ISO Bike	219 sec (Level 1) 285 sec (Default) Premium Glossy Photo Paper 170gsm B0 Size/ISO Bike
Ink System		
Ink Type	Pigment Ink	
Ink Brand Name	UltraChrome PRO 12 Ink	
Colour	Photo Black, Cyan, Vivid Magenta, Yellow, Matte Black, Light Cyan, Vivid Light Magenta, Orange, Green, Violet, Grey, Light Grey	
Ink Capacity	350ml, 700ml	
Ink Case	Ink Cartridge	
Paper Handling		
Paper Path	Roll Sheet (Manual)	
Paper Feed Method	Friction Feed	
Maximum Roll Diameter	2" Roll core-media: Max. 103 mm, 3" Roll core-media: Max. 150 mm	
Maximum Roll Weight	6kg	10kg
Paper Width (Roll)	254 – 620 mm	254 – 1,118 mm
Paper Width (Cut Sheet)	210 – 620 mm	210 – 1,118 mm
Paper Thickness (Roll)	0.08 – 0.5 mm	
Paper Thickness (Manual)	Cut Sheet: 0.08 – 1.5 mm	
Connectivity		
Interface	Super-Speed USB ¹ , 100BASE-TX / 1000BASE-T	USB Interface (Hi-Speed USB/USB), 1000BASE-T/100BASE-TX
Printer Language	ESC/P raster	
Memory	2GB	
Operating System		
PC System Requirement	Windows 10, 8.1, 8, 7, Windows Vista, Windows XP (32bit/64bit) Windows Server 2019/2016/2012 R2/2012/2008/2003 R2/2003 SP2 or later	
Mac System Requirement	Mac OS X 10.6.8 or later, Mac OS 11 or later	
Utility Software		
Bundled in CD	Windows Install Navi - Printer driver - EpsonNet Setup - EpsonNet Print - EpsonNet Config SE -Epson Software Updater - EPSON manuals - Manual Luncher - Epson Control DashboardMac Setup Navi EpsonNet Config SE Epson Software Updater	
Web Delivery	Windows Install Navi, Web Installer, Firmware Updater, PS Driver, HDI Driver, XPS Driver, Epson Media Installer, EpsonNet Setup Manager, Epson Device Admin, Epson Edge Dashboard, Epson Edge Print, Epson Print Layout, LFP Accounting tool, Adobe ICC Profiles, Mac Web Installer, Install Navi - Printer driver - EpsonNet Config - Epson Software Updater - Uninstaller - Epson Manuals, Epson Media Installer, Firmware Updater, Linux, Printer driver	
Electrical Specifications		
Voltage	AC 100 – 240V, 50/60Hz	
Rated Current	AC 100V 3.4AAC 100-240V 3.4-1.6A	
Power Consumption	Operating: Approx. 85W Ready: Approx. 32W Sleep: Approx. 3.4W Standby: Approx. 0.3W	Operating: Approx. 110W Ready: Approx. 32W Sleep: Approx. 3.4W Standby: Approx. 0.3W
Environmental Conditions		
Temperature	Operating: 10°C to 35°C / Storage: -20°C to 40°C	
Humidity	Operating: 20% to 80% (no condensation), Storage: 5% to 85% (no condensation)	
Dimensions & Weight		
Dimension (W x D x H)	Storage: 1,401 x 667 x 1,218 mm Printing: 1,401 x 2,211 x 1,218 mm	Storage: 1,909 x 667 x 1,218 mm Printing: 1,909 x 2,211 x 1,218 mm
Weight	Approx. 121.7 kg	Approx. 153.8 kg

¹ Might differ depends on applications/media.

Find out more at www.epson.com.sg/gobig-photo



Epson Singapore Pte Ltd 438B Alexandra Road, Block B Alexandra Technopark, #04-01/04, Singapore 119968. Tel: (65) 6586-5500
Epson Customer Care Center 100G Pasir Panjang Road, #01-09 Interlocal Centre, Singapore 118523. Epson Helpdesk: 800 120 5564. Please refer to www.epson.com.sg/contact for opening hours.

Dimensions and Weight

SC-P5330
Weight: Approx. 53 kg



WHAT'S IN THE BOX

- Printer
- Initial ink cartridge (80ml)
- AC power cable
- Setup guide
- Maintenance box
- Borderless maintenance box
- Paper cassette cover
- Roll feed spindle
- Borderless printing spacer

OPTIONS

2/3" Dual Roll Feed Spindle C12C811251
 Auto Cutter Spare Blade C12C815351

©2024 Epson Singapore Pte Ltd. All Rights Reserved. Reproduction in part or in whole, without the written permission from Epson, is strictly prohibited.

EPSON is a registered trademark of Seiko Epson Corporation.

All other product names and other company names used herein are for identification purposes only and are the trademarks or registered trademarks of their respective owners.

Epson disclaims any and all rights in those marks. Projected images shown herein are simulations. The actual product design and contents may vary. Specifications are subject to change without notice and may vary between countries. Please check with local Epson offices for more information.

Apple, iPad and iPhone are trademarks of Apple Inc., registered in the U.S. and other countries. App Store is a service mark of Apple Inc.

Android is a trademark of Google Inc.

Dealer's Stamp

Information correct at time of printing.
 Printed September 2024

Dimensions and Weight

SC-P7530
Weight: Approx. 121.7 kg



SC-P9530
Weight: Approx. 153.8 kg



WHAT'S IN THE BOX

- Printer
- Printer Stand
- Initial ink cartridge (110ml)
- AC power cable
- Setup guide
- Software CD-ROM
- Maintenance box

OPTIONS

Spectro Proofer (24") C12C890531
 – Compatible with P7500
 Spectro Proofer (44") C12C890521
 – Compatible with P5500
 ILS30EP C12C932021
 Auto Take Up Reel C12C935931
 Hard Disk Unit C12C934551
 Roll Media Adapter C12C935931
 Adobe® PostScript® 3™ C12C934571
 Expansion Unit

©2024 Epson Singapore Pte Ltd. All Rights Reserved. Reproduction in part or in whole, without the written permission from Epson, is strictly prohibited.

EPSON is a registered trademark of Seiko Epson Corporation.

All other product names and other company names used herein are for identification purposes only and are the trademarks or registered trademarks of their respective owners.

Epson disclaims any and all rights in those marks. Projected images shown herein are simulations. The actual product design and contents may vary. Specifications are subject to change without notice and may vary between countries. Please check with local Epson offices for more information.

Apple, iPad and iPhone are trademarks of Apple Inc., registered in the U.S. and other countries. App Store is a service mark of Apple Inc.

Android is a trademark of Google Inc.

Dealer's Stamp

Information correct at time of printing.
 Printed September 2024

SPECIFICATIONS

MODEL NUMBER	SC-P6530E	SC-P6530D
SKU Number	C11CJ48402	C11CJ49402
Printing Technology	PrecisionCore Inkjet Technology, Variable-Sized Droplet Technology	
Printing Method	PrecisionCore MicroTFP Printhead	
Print Head	PrecisionCore MicroTFP Printhead	
Nozzle Configuration	9,600 Nozzles	
Black	Pk:1,600, Mk:1,600	
Colour	C:1,600, M:1,600, Y:1,600, Grey:1,600	
Maximum Resolution	2,400 x 1,200 dpi	
Minimum Ink Droplet Volume	3.5pl	
Printing Specifications		
Print Speed	A1 Size Premium Glossy Photo Paper 170gsm, 1200dpi x 1200dpi EPSON Standard (sRGB) / Quality: 111 sec	
Margin	Roll Paper	Cut Sheet
	Right: Min. 3mm ¹ / Left : Min. 0mm ¹ Top: Min. 3mm ¹ / Bottom: Min. 1mm ¹	
Minimum Line Width	0.08 mm ² (0.02 mm ³)	
Ink System		
Ink Type	Pigment Ink	
Ink Brand Name	UltraChrome PRO 6 Ink	
Colour	Photo Black, Cyan, Magenta, Yellow, Matte Black, Grey	
Ink Capacity	350, 700 ml	
Ink Case	Ink Cartridge	
Paper Handling		
Paper Path	Roll (Single Roll), Cut Sheet (Manual Feed), Poster Board (Manual Feed)	Roll (Double Roll), Cut Sheet (Manual Feed), Poster Board (Manual Feed)
Paper Feed Method	Friction Feed	
Maximum Roll Diameter	Max. 170 mm ⁴	
Maximum Roll Weight	6.8kg	
Paper Width (Roll)	254 – 610 mm	
Paper Width (Cut Sheet)	203 – 610 mm	
Paper Thickness (Roll)	0.07 – 0.8 mm	
Paper Thickness (Manual)	Cut Sheet: 0.07 – 0.8 mm / Poster Board: 0.8 – 1.5 mm	
Maximum Printable Length	91 m ⁵	
Borderless Sizes	254mm (10"), 300mm (11.8"), 330mm (13"), 356mm (14"), 406mm (16"), 432mm (17"), 500mm (19"), 508mm (20"), 515mm (20.3"), 594mm (23"), 610mm (24")	
Roll Paper Remaining	The remaining amount is managed by the barcode printed on roll paper	
Connectivity		
Interface	SuperSpeed USB, 100BASE-TX/1000BASE-T/IEEE802.11b/g/n/ac, USB Memory Stick	
Printer Language	ESC/P raster	ESC/P raster, HP-GL/2*, HP RTL*, Adobe PostScript 3, Adobe PDF 1.7
USB Direct Print	Yes	
Memory	4GB	
HDD (Optional)	SSD 960GB	
Operating System		
PC System Requirement	Windows 10, 8.1, 8, 7, Windows Vista, Windows XP (32bit/64bit) Windows Server 2019/2016/2012 R2/2012/2008/2003 R2/2003 SP2 or later	
Mac System Requirement	Mac OS X 10.6.8 or later, Mac OS 11 or later	
Utility Software		
Bundled in CD	Windows - Printer driver - EpsonNet Setup - EpsonNet Print - EpsonNet Config SE - EPSON manuals - Manual Launcher - LFP Print Plug-in for Office	
Web Delivery	Epson Media Installer - EpsonNet SetupManager - Epson Device Admin - Epson Edge Dashboard - Epson Print Layout - Epson Print Automate - Order Controller Mac - Printer driver - EpsonNet Config SE - EPSON manuals - Epson Media Installer - Epson Edge Dashboard - Epson Print LayoutiOS/Android - Epson Smart Panel	
Electrical Specifications		
Voltage	AC 100 – 240V, 50/60Hz	
Rated Current	AC 100V 3.4AAC 100-240V 3.4-1.6A	
Power Consumption	Operating: Approx. 75W, Ready: Approx. 32W, Sleep: Approx. 2W, Standby: Approx. 0.3W	
Environmental Conditions		
Temperature	Operating: 10°C to 35°C / Storage: -20°C to 40°C	
Humidity	Operating: 20% to 80% (no condensation) Storage: 5% to 85% (no condensation)	
Dimensions & Weight		
Dimension (W x D x H)	1,365 x 499 x 975 mm	
Weight	Approx. 115.2kg	Approx. 115.6kg

¹ Might differ depends on applications/media.

² ISO/IEC 24790, Single weight matte paper, CAD/line drawing, speed, high speed=Off, finest detail=On.

³ Addressable.

⁴ Depending on the thickness of the paper. It is larger than the available outer diameter size. If roll paper is used, please confirm that it is within the outside diameter range.

⁵ Printable length is limited depending on restrictions of operating systems or applications.

Find out more at www.epson.com.sg/gobig-photo



Epson Singapore Pte Ltd 438B Alexandra Road, Block B Alexandra Technopark, #04-01/04, Singapore 119968. Tel: (65) 6586-5500
Epson Customer Care Center 100G Pasir Panjang Road, #01-09 Interlocal Centre, Singapore 118523. Epson Helpdesk: 800 120 5564. Please refer to www.epson.com.sg/contact for opening hours.

SPECIFICATIONS

MODEL NUMBER	SC-P8530D	SC-P8530DM	SC-P8530DL
SKU Number	C11CJ50402	C11CJ51402	C11CJ75402
Printing Technology	PrecisionCore Inkjet Technology, Variable-Sized Droplet Technology		
Printing Method	PrecisionCore MicroTFP Printhead		
Print Head	PrecisionCore MicroTFP Printhead		
Nozzle Configuration	9,600 Nozzles		
Black	Pk:1,600, Mk:1,600		
Colour	C:1,600, M:1,600, Y:1,600, Grey:1,600		
Maximum Resolution	2,400 x 1,200 dpi		
Minimum Ink Droplet Volume	3.5pl		
Printing Specifications			
Print Speed	B0 size Premium Glossy Photo Paper 170gsm: 152 sec (Speed), 281 sec (Quality), 614 sec (Max Quality) Plain Paper: 35 sec (Draft), 46 sec (Speed), 258 sec (High Quality) Poster – B0 size Epson Premium Glossy Photo Paper 170gsm 1200dpi x 1200dpi: Standard(sRGB)/Quality: 281 sec Right: Min. 3mm ¹ / Left : Min. 0mm ¹ Top: Min. 3mm ¹ / Bottom: Min. 1mm ¹		
Margin	Roll Paper	Cut Sheet	
Scanning Specifications			
Max. Scan Speed	10 ips		
Max. Optical Resolution	600 dpi		
Scanning Specifications			
Max. Scan Speed	10 ips		
Max. Optical Resolution	600 dpi		
Copying Specifications			
Scaling	25 – 755%		
Max. Copy	99 copies		
Ink System			
Ink Type	Pigment Ink		
Ink Brand Name	UltraChrome PRO 6 Ink		
Colour	Photo Black, Cyan, Magenta, Yellow, Matte Black, Grey		
Ink Capacity	350, 700 ml		1,600 ml
Ink Case	Ink Cartridge		Ink Supply Unit (Bulk Ink Solution)
Paper Handling			
Paper Path	Roll (Double Roll), Cut Sheet (Manual Feed), Poster Board (Manual Feed)		
Paper Feed Method	Friction Feed		
Maximum Roll Diameter	Max. 170 mm ²		
Maximum Roll Weight	12.5kg		
Paper Width (Roll)	254 – 1,118 mm		
Paper Width (Cut Sheet)	203 – 1,118 mm		
Paper Thickness (Roll)	0.07 – 0.8 mm		
Paper Thickness (Manual)	Cut Sheet: 0.07 – 0.8 mm / Poster Board: 0.8 – 1.5 mm		
Maximum Printable Length	91 m ³		
Borderless Sizes	254mm (10"), 300mm (11.8"), 330mm (13"), 356mm (14"), 406mm (16"), 432mm (17"), 500mm (19"), 508mm (20"), 515mm (20.3"), 594mm (23"), 610mm (24"), 700mm (27.5"), 728mm (28.6"), 841mm (33"), 914mm (36"), 1030mm (40.5"), 1188mm (44")		
Roll Paper Remaining	The remaining amount is managed by the barcode printed on roll paper		
Connectivity			
Interface	SuperSpeed USB ¹ , 100BASE-TX / 1000BASE-T/IEEE802.11b/g/n/ac		
Printer Language	ESC/P raster, HP-GL/2*, HP RTL*, Adobe PostScript 3, Adobe PDF 1.7		
USB Direct Print	Yes		
Memory	4GB		
HDD (Optional)	SSD 960GB		
Operating System			
PC System Requirement	Windows 10, 8.1, 8, 7, Windows Vista, Windows XP (32bit/64bit) Windows Server 2019/2016/2012 R2/2012/2008/2003 R2/2003 SP2 or later Mac OS X 10.6.8 or later, Mac OS 11 or later		
Mac System Requirement			
Utility Software			
Bundled in CD	Windows - Printer driver - EpsonNet Setup - EpsonNet Print - EpsonNet Config SE - EPSON manuals - Manual Launcher - LFP Print Plug-in for Office - PS Driver - PS Folder		
Web Delivery	Windows - Epson Media Installer - EpsonNet SetupManager - Epson Device Admin - Epson Edge Dashboard - Epson Print Layout - Epson Print Automate - Epson Edge Print (Option) - Epson Print Admin (Option) - Order Controller (Option) Mac - Printer driver - EpsonNet Config SE - EPSON manuals - Epson Media Installer - Epson Edge Dashboard - Epson Print Layout - PS DriveriOS/Android - Epson Smart Panel		
Electrical Specifications			
Voltage	AC 100 – 240V, 50/60Hz		
Rated Current	AC 100V 3.4AAC 100-240V 3.4-1.6A		
Power Consumption	Operating: Approx. 70W Ready: Approx. 32W Sleep: Approx. 2.0W Standby: Approx. 0.3W	Operating: Approx. 75W Ready: Approx. 32W Sleep: Approx. 2.0W Standby: Approx. 0.3W	
Environmental Conditions			
Temperature	Operating: 10°C to 35°C / Storage: -20°C to 40°C		
Humidity	Operating: 20% to 80% (no condensation), Storage: 5% to 85% (no condensation)		
Dimensions & Weight			
Dimension (W x D x H)	1,848 x 499 x 975 mm		
Weight	Approx. 155kg	Approx. 165kg	

¹ Might differ depends on applications/media.

² Depending on the thickness of the paper. It is larger than the available outer diameter size. If roll paper is used, please confirm that it is within the outside diameter range.

³ Printable length is limited depending on restrictions of operating systems or applications.

Find out more at www.epson.com.sg/gobig-photo



Epson Singapore Pte Ltd 438B Alexandra Road, Block B Alexandra Technopark, #04-01/04, Singapore 119968. Tel: (65) 6586-5500
Epson Customer Care Center 100G Pasir Panjang Road, #01-09 Interlocal Centre, Singapore 118523. Epson Helpdesk: 800 120 5564. Please refer to www.epson.com.sg/contact for opening hours.

Dimensions and Weight

SC-P6530E
Weight: Approx. 115.2kg



SC-P6530D
Weight: Approx. 115.6kg



WHAT'S IN THE BOX

- Printer
- Initial ink cartridge (110ml)
- AC power cable
- Setup guide
- Software CD-ROM
- Maintenance box

OPTIONS

Roll Feed Spindle (24") C12C937711
 SSD Unit C12C936671

*It is recommended to do test before purchasing printer if HP-GL/2 or HP RTL direct print is used, because the support is dependent on application or data.

©2024 Epson Singapore Pte Ltd. All Rights Reserved. Reproduction in part or in whole, without the written permission from Epson, is strictly prohibited.

EPSON is a registered trademark of Seiko Epson Corporation.

All other product names and other company names used herein are for identification purposes only and are the trademarks or registered trademarks of their respective owners.

Epson disclaims any and all rights in those marks. Projected images shown herein are simulations. The actual product design and contents may vary. Specifications are subject to change without notice and may vary between countries. Please check with local Epson offices for more information.

Apple, iPad and iPhone are trademarks of Apple Inc., registered in the U.S. and other countries. App Store is a service mark of Apple Inc.

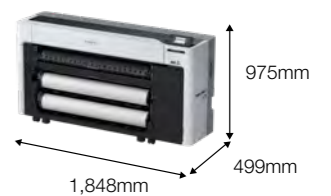
Android is a trademark of Google Inc.

Dealer's Stamp

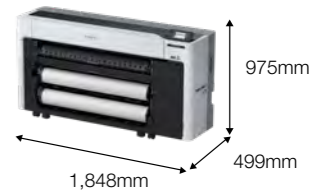
Information correct at time of printing.
 Printed September 2024

Dimensions and Weight

SC-P8530D / P8530DM
Weight: Approx. 155kg



SC-P8530DL
Weight: Approx. 165kg



WHAT'S IN THE BOX

- Printer
- Initial ink cartridge (240ml)
- AC power cable
- Setup guide
- Software CD-ROM
- Maintenance box

OPTIONS

Roll Feed Spindle (44") C12C936171
 SSD Unit C12C936671

*It is recommended to do test before purchasing printer if HP-GL/2 or HP RTL direct print is used, because the support is dependent on application or data.

©2024 Epson Singapore Pte Ltd. All Rights Reserved. Reproduction in part or in whole, without the written permission from Epson, is strictly prohibited.

EPSON is a registered trademark of Seiko Epson Corporation.

All other product names and other company names used herein are for identification purposes only and are the trademarks or registered trademarks of their respective owners.

Epson disclaims any and all rights in those marks. Projected images shown herein are simulations. The actual product design and contents may vary. Specifications are subject to change without notice and may vary between countries. Please check with local Epson offices for more information.

Apple, iPad and iPhone are trademarks of Apple Inc., registered in the U.S. and other countries. App Store is a service mark of Apple Inc.

Android is a trademark of Google Inc.

Dealer's Stamp

Information correct at time of printing.
 Printed September 2024

SPECIFICATIONS

MODEL NUMBER	SC-P20070
SKU Number	C11CE20402
Printing Technology	PrecisionCore Inkjet Technology, Variable-Sized Droplet Technology
Printing Method	PrecisionCore MicroTFP Printhead
Print Head	4,000 Nozzles
Nozzle Configuration	Black PK, MK, DGY, GY, LGY: 800 Nozzles
Colour	C, VM, Y, LC, VLM: 800 Nozzles
Maximum Resolution	2,400 x 1,200 dpi
Minimum Ink Droplet Volume	3.5pl
Printing Specifications	
Print Speed	Draft Mode (600 x 600 dpi): 1.9 minutes Normal Mode (1,200 x 1,200 dpi): 3.0 minutes Fine Mode (2,400 x 1,200 dpi): 5.6 minutes
Ink System	
Ink Type	Pigment Ink
Ink Brand Name	UltraChrome PRO Ink
Colour	Photo Black, Cyan, Vivid Magenta, Yellow, Matte Black, Dark Grey, Grey, Light Grey, Light Cyan, Vivid Light Magenta
Ink Capacity	700ml
Ink Case	Ink Cartridge
Paper Handling	
Paper Path	Roll (Single Roll), Cut Sheet (Manual Feed)
Paper Feed Method	Friction Feed
Paper Width (Roll)	254 (10") – 1,626 (64") mm
Paper Width (Cut Sheet)	210 (A4) – 1,118 (44") mm
Paper Thickness (Roll)	0.08 – 1.50 mm
Borderless Sizes	254mm (10"), 300mm (11.8"), 329mm (A3+/A3++), 406mm (16"), 432mm (17"/USC), 508mm (20"), 515mm (20.3"/B2), 594mm (A1), 610mm (24"/A0+), 728, (29"/B1), 841mm (A0), 914mm (36"/A0+), 1,030mm (B0), 1,118mm (44"/B0+), 1,270mm (50"), 1,372mm (54"), 1,524mm (60")
Roll Paper Remaining	The remaining amount is managed by the barcode printed on roll paper
Connectivity	
Interface ¹	Hi-Speed USB
Printer Language	ESC/P raster
USB Direct Print	Yes
Memory	1.5GB
Operating System	
PC System Requirement	Windows XP, Vista, 7, 8, 8.1 (32/64bit) or later
Mac System Requirement	Macintosh Mac OS X 10.6.8 or later
Utility Software	
Bundled in CD	User's Guide (EN), Network Guide (EN), LFP RemotePanel 2, Epson Color Calibration Utility, EpsonNet Setup, EpsonNet Config, EpsonNet Print (Windows only)
Web Delivery	LFP Accounting Tool (Job monitoring, consumable cost tracking), HDD Utility software (Web download)
Electrical Specifications	
Voltage	AC 100 – 240V, 50/60Hz
Rated Current	AC 100V 3.4AAC 100-240V 3.4-1.6A
Power Consumption	Operating: Approx. 95W, Sleep: Approx. 2.8W, Standby: Approx. 0.5W
Environmental Conditions	
Temperature	Operating: 10°C to 35°C / Storage: -20°C to 40°C
Humidity	Operating: 20% to 80% (no condensation), Storage: 5% to 85% (no condensation)
Dimensions & Weight	
Dimension (W x D x H)	2,415 x 760 x 1,145 mm
Weight	Approx. 171 kg

¹ Interface is 1000BASE-T.

Dimensions and Weight

SC-P20070
Weight: Approx. 171 kg



WHAT'S IN THE BOX

- Printer
- Initial ink cartridge (110ml)
- AC power cable
- Setup guide
- Software CD-ROM
- Maintenance box

OPTIONS

Auto Cutter Spare Blade	C13S210040
Cleaning Stick	C13S090013
Maintenance Box	C13T619300
Auto Take-up Reel Unit	C12C932201
Roll Adapter	C12C932231
Adobe® PostScript® 3™	
Expansion Unit	C12C891131
Hard Disk Unit	C12C848031

©2024 Epson Singapore Pte Ltd. All Rights Reserved. Reproduction in part or in whole, without the written permission from Epson, is strictly prohibited.

Epson is a registered trademark of Seiko Epson Corporation.

All other product names and other company names used herein are for identification purposes only and are the trademarks or registered trademarks of their respective owners.

Epson disclaims any and all rights in those marks. Projected images shown herein are simulations. The actual product design and contents may vary. Specifications are subject to change without notice and may vary between countries. Please check with local Epson offices for more information.

Apple, iPad and iPhone are trademarks of Apple Inc., registered in the U.S. and other countries. App Store is a service mark of Apple Inc.

Android is a trademark of Google Inc.

Dealer's Stamp

Information correct at time of printing.
Printed September 2024

SPECIFICATIONS

MODEL NUMBER	SC-P20530
SKU Number	C11CK99402
Printing Technology	PrecisionCore Inkjet Technology, Variable-Sized Droplet Technology
Printing Method	PrecisionCore MicroTFP Printhead
Print Head	9,600 Nozzles
Nozzle Configuration	Black PK, MK, GY, LGY: 800 Nozzles
Colour	C, VM, Y, LC, VLM, OR, GR, V: 800 Nozzles
Maximum Resolution	2,400 x 1,200 dpi
Minimum Ink Droplet Volume	3.5pl
Printing Specifications	
Print Speed	Plain Paper Draft Mode: Approx. 122 m ² /h
Line Accuracy	±0.2% or ±.26 mm (whichever greater)
Ink System	
Ink Type	Pigment Ink
Ink Brand Name	UltraChrome PRO 12 Ink
Colour	Photo Black, Cyan, Vivid Magenta, Yellow, Matte Black, Grey, Light Grey, Light Cyan, Vivid Light Magenta, Orange, Green, Violet
Ink Capacity	1,600ml
Ink Case	Ink Supply Unit
Paper Handling	
Paper Path	Roll (Single Roll), Cut Sheet (Manual Feed), Poster Board (Manual Feed)
Paper Feed Method	Friction Feed
Paper Width (Roll)	254 (10") – 1,626 (64") mm
Paper Width (Cut Sheet)	210 (A4) – 1,118 (44") mm
Paper Thickness (Roll)	0.08 – 0.5 mm
Paper Margin (Cut Sheet) ¹	With Border (Top, Right, Left): Min. 3 mm / (Bottom): Min 14 mm Borderless (Top): Min. 3 mm / (Bottom): Min 14 mm / (Right, Left): Min. 0 mm
Paper Margin (Roll) ¹	With Border (Top, Right, Left, Bottom): Min. 3 mm Borderless (Top, Right, Left, Bottom): Min. 0 mm
Maximum Printable Length ²	91 m
Maximum Reel Diameter ³	Max. 190 mm
Maximum Reel Weight ³	Max. 24 Kg
Maximum Roll Diameter ³	Max. 170 mm
Maximum Reel Weight ³	Max. 24 Kg
Borderless Sizes	254mm (10"), 300mm (11.8"), 330mm (A3+/A3++), 406mm (16"), 432mm (17"/USC), 508mm (20"), 515mm (20.3"/B2), 594mm (A1), 610mm (24"/A0+), 728, (29"/B1), 841mm (A0), 914mm (36"/A0+), 1,030mm (B0), 1,118mm (44"/B0+), 1,270mm (50"), 1,372mm (54"), 1,524mm (60"), 1,626mm (64")
Roll Paper Remaining	The remaining amount is managed by the barcode printed on roll paper
Connectivity	
Interface	SuperSpeed USB, 100BASE-TX / 1000BASE-T (Option)
Printer Language	ESC/P raster, Adobe PostScript 3 ⁴ , Adobe PDF 1.7 ⁴ , TIFF ⁴ , JPEG ⁴ , CALS G4 (Type I) ⁴ , EPS ⁴
USB Direct Print	Yes
Memory	Physical 6GB (Printer H/W)
Operating System	
PC System Requirement	Windows XP, Vista, 7, 8, 8.1 (32/64bit) or later
Mac System Requirement	Macintosh Mac OS X 10.6.8 or later
Utility Software	
Bundled in CD	User's Guide (EN), Network Guide (EN), LFP RemotePanel 2, Epson Color Calibration Utility, EpsonNet Setup, EpsonNet Config, EpsonNet Print (Windows only)
Web Delivery	LFP Accounting Tool (Job monitoring, consumable cost tracking), HDD Utility software (Web download)
Electrical Specifications	
Voltage	AC 100 – 240V, 50/60Hz
Rated Current	AC 100V 3.4AAC 100-240V 3.4-1.6A
Power Consumption	Operating: Approx. 95W, Sleep: Approx. 2.2W, Standby: Approx. 0.5W
Environmental Conditions	
Temperature	Operating: 10°C to 35°C / Storage: -20°C to 40°C
Humidity	Operating: 20% to 80% (no condensation), Storage: 5% to 85% (no condensation)
Dimensions & Weight	
Dimension (W x D x H)	2,740 x 976 x 1,145 mm
Weight	Approx. 224 kg

¹ Might differ depends on applications/media.

² Auto Take-up Reel Unit (Option) is needed.

³ Printable length is limited depending on restrictions of operating systems or applications.

⁴ Adobe® PostScript® 3™ Expansion Unit is needed.

Dimensions and Weight

SC-P20530 (Stowed Position)
Weight: Approx. 224 kg



WHAT'S IN THE BOX

- Printer
- AC power cable
- Setup guide
- Software CD-ROM
- Maintenance box

OPTIONS

Auto Cutter Spare Blade	C13S210040
Bulk Ink Solution	C12C939161
Cleaning Sheet	C13S400045
Cleaning Stick	C13S090013
Maintenance Box	C13T619300
Auto Take-up Reel Unit	C12C932201
Roll Adapter	C12C932231
Adobe® PostScript® 3™	
Expansion Unit	C12C939191
SSD Unit	C12C936671

©2024 Epson Singapore Pte Ltd. All Rights Reserved. Reproduction in part or in whole, without the written permission from Epson, is strictly prohibited.

Epson is a registered trademark of Seiko Epson Corporation.

All other product names and other company names used herein are for identification purposes only and are the trademarks or registered trademarks of their respective owners.

Epson disclaims any and all rights in those marks. Projected images shown herein are simulations. The actual product design and contents may vary. Specifications are subject to change without notice and may vary between countries. Please check with local Epson offices for more information.

Apple, iPad and iPhone are trademarks of Apple Inc., registered in the U.S. and other countries. App Store is a service mark of Apple Inc.

Android is a trademark of Google Inc.

Dealer's Stamp

Information correct at time of printing.
Printed September 2024

Find out more at www.epson.com.sg/gobig-photo



Epson Singapore Pte Ltd 438B Alexandra Road, Block B Alexandra Technopark, #04-01/04, Singapore 119968. Tel: (65) 6586-5500
Epson Customer Care Center 100G Pasir Panjang Road, #01-09 Interlocal Centre, Singapore 118523. Epson Helpdesk: 800 120 5564. Please refer to www.epson.com.sg/contact for opening hours.

Find out more at www.epson.com.sg/gobig-photo



Epson Singapore Pte Ltd 438B Alexandra Road, Block B Alexandra Technopark, #04-01/04, Singapore 119968. Tel: (65) 6586-5500
Epson Customer Care Center 100G Pasir Panjang Road, #01-09 Interlocal Centre, Singapore 118523. Epson Helpdesk: 800 120 5564. Please refer to www.epson.com.sg/contact for opening hours.