

DRIVE INNOVATION WITH HIGH-PRECISION PATTERN MATCHING AND CREATIVE DESIGNS.



Elevate Textile Design Through Precision Pattern Matching and Versatility with the Epson ML-16000JQ.

The Epson ML-16000JQ is the latest innovation in the industry-leading Monna Lisa direct-to-fabric digital textile printer series, designed for businesses looking to elevate their product offerings with intricate, high-value designs. The printer's advanced pattern matching technology enables accurate printing on complex textured fabrics such as jacquard, embroidery, and lace, and also supports double sided printing. This breakthrough empowers businesses to meet the growing demand for short-run, custom-designed textiles with unparalleled precision and creative freedom.

ENGINEERED FOR good



Smart Fabric Matching

Camera-guided pattern technology enables precise, colour-unlimited prints on textured and double-sided fabrics for high-value, short-run production.

Precision Printing

Equipped with 16 PrecisionCore MicroTFP printheads, this printer delivers flexible 8 colour direct-to-fabric printing with exceptional image quality.

Environmental Friendly

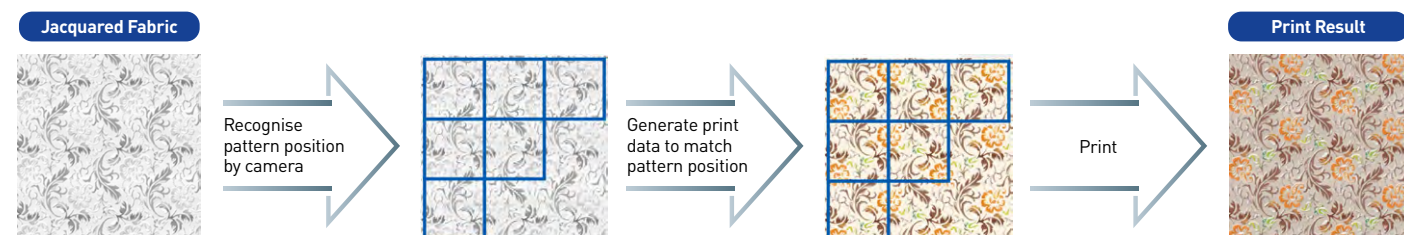
The ML-16000JQ reduces water and energy usage, shortens lead times, and supports an on-demand production model to minimise environmental waste.

Advanced Precision Pattern Matching Technology enables accurate printing on complex fabrics by aligning prints seamlessly with fabric textures. This allows the creation of distinctive high value products that combine creative design with exceptional quality. The solution helps businesses stand out in a competitive market by unlocking new possibilities in textile customisation and production efficiency.



Pattern Matching Technology

The ML-16000JQ enables the production of high value added textile products with creative designs and no colour limitations, meeting the growing market demand for short run production, which remains a challenge for conventional machines. The printer is equipped with a camera unit that recognises fabric patterns in real time, detects design positions, adjusts size, and automatically generates print data. Its advanced pattern matching technology allows precise printing on specific areas of textured fabrics such as jacquard, embroidery, and lace, and also supports the creation of double sided prints.



High Productivity 8-Colour Direct-to-Fabric Printer



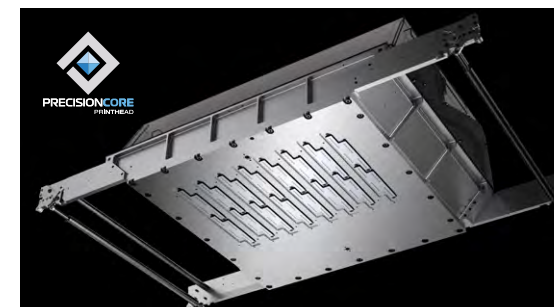
The ML-16000JQ also functions as a standard direct-to-fabric printer, offering a high level of flexibility. As part of the Monna Lisa series, it represents the pinnacle of Epson's expertise in ink chemistry, printhead technology, image processing, and fabric treatment, both before and after printing.

Combined with Epson's total textile solution, the ML-16000JQ delivers outstanding print quality, exceptional versatility, and a superior level of customer satisfaction.

High Productivity

PrecisionCore MicroTFP Printheads

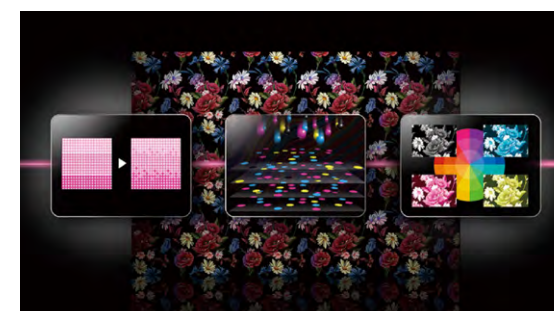
Equipped with 16 PrecisionCore MicroTFP printheads, the latest high-density, high-precision printheads developed and manufactured in-house, it realises high productivity and image quality.



High Image Quality

Epson Precision Dot Technology

Epson Precision Dot technology, refined over many years of inkjet printer development, underlies superior image quality. In addition, the exclusive Microweave, halftoning, and LUT technologies work together to reduce banding, graininess, and image quality degradation caused by dot placement errors.



Symmetrical Colour Alignment and Accurate Belt Position Control

The ML-16000JQ features symmetrical colour alignment for consistent overlap order during high-speed bidirectional printing, and accurate belt position control technology for precise fabric feeding. The result is optimal quality and speed, with superb reproduction of colour gradations, fine details, and complex geometric patterns.



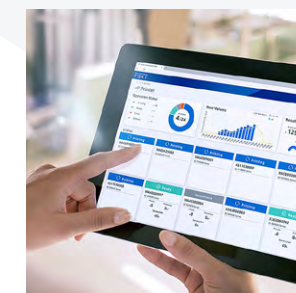
High Reliability

Dual Sensor Systems to Prevent Costly Head Strikes

Dual head-strike sensors detect any folds or wrinkles that may cause the fabric to come into direct contact with the printheads. If folds or wrinkles are detected, the sensors immediately stop the carriage to avert a potential head strike.

Remote Monitoring Platform

The Epson Cloud Solution PORT provides a live view of your printer fleet production*, equipment utilisation, and service information to better manage efficiency and optimise your Epson printing workflow.



* All features of this system require an active internet connection and use of a supported browser.

Local Epson Service Teams Support Customer Success

Epson has sales offices, demo/solution centres and local service teams around the globe to support its customers.

Environmentally Friendly GENESTA Inks

Epson's GENESTA inks are available in four formulations: Acid, Reactive, Disperse, and Pigment. All GENESTA inks are ECO PASSPORT certified, meeting globally recognised standards for environmentally responsible textile printing. The Acid ink is also approved by bluesign®, while the Reactive, Acid, and Pigment inks are GOTS approved by ECOCERT.*

The vacuum packed degassed ink comes in hot-swappable 10-litre high-capacity ink cartridges that allow uninterrupted production.



* Genesta RE-N Reactive inks: except one of Grey (Grey RE-N), Genesta AC Acid inks: except Black AC-N / Grey AC-N.



SPECIFICATIONS

MODEL NUMBER	ML-16000JQ
Print	
Printing Technology	PrecisionCore Inkjet Technology
Number of Print Head	16
Number of Colour	8
Maximum Resolution	1,200 x 1,200 dpi
Gradation Process	Variable-Sized Droplet Technology
Max. Print Width	1,800 mm / 71 inch
Max. Print Length	Unlimited
Max. Fabric Width	1,800 mm / 71 inch
Max. Fabric Thickness	Up to 10 mm
PRINT SPEED (m²/h)*	
Pattern Match Printing	69 (900 x 600 dpi 4+ pass)
Normal 8 Colour Printing	
Maximum	417 (300 x 600 dpi, 1 pass)
Typical Printing Speed 1	236 (600 x 600 dpi, 2 pass)
Typical Printing Speed 2	158 (900 x 600 dpi, 3 pass)
PRINT SPEED (sq ft/h)*	
Pattern Match Printing	743 (900 x 600 dpi 4+ pass)
Normal 8 Colour Printing	
Maximum	4,489 (300 x 600 dpi, 1 pass)
Typical Printing Speed 1	2,540 (600 x 600 dpi, 2 pass)
Typical Printing Speed 2	1,701 (900 x 600 dpi, 3 pass)
PRINT SPEED (lmt/h)*	
Pattern Match Printing	46 (900 x 600 dpi 4+ pass)
Normal 8 Colour Printing	
Maximum	278 (300 x 600 dpi, 1 pass)
Typical Printing Speed 1	157 (600 x 600 dpi, 2 pass)
Typical Printing Speed 2	105 (900 x 600 dpi, 3 pass)
PRINT SPEED (li ft/h)*	
Pattern Match Printing	151 (900 x 600 dpi 4+ pass)
Normal 8 Colour Printing	
Maximum	912 (300 x 600 dpi, 1 pass)
Typical Printing Speed 1	516 (600 x 600 dpi, 2 pass)
Typical Printing Speed 2	346 (900 x 600 dpi, 3 pass)
FABRIC HANDLING	
Fabric Drive	Conveyor Belt with Adhesive
Belt Washing	Automatic
STANDARD FEEDER	
Fabric Roll Diameter	300 mm / 11.8 inch
Fabric Roll Weight	100 kg / 220 lb
Fabric Roll Core Diameter	2 inch or 3 inch
ENVIRONMENT CHARACTERISTICS	
Temperature (°C)	Operating: 20 °C – 30 °C, Recommended: 22 °C – 28 °C
Temperature (°F)	Operating: 68 °F – 86 °F, Recommended: 72 °F – 82 °F
Humidity	Operating: 40 – 60% RH (No Condensation)
ELECTRICAL (MAIN UNIT)	
Voltage	400V, 3 phase + Neutral + Earth, 50Hz/60Hz
Rated Current	30A
Apparent Power (VA)	20.7 kVA (Operating)
CERTIFICATIONS	
Safety	EU, EFTA countries, Turkey, UK: Machinery Directive, EMC Directive (CE/UKCA), Morocco: Safety & EMC regulation (CP) Brazil: NR12 Australia, Newzealand: Australia EMC framework (RCM)
NETWORK	
Transmission Speed	100BASE-TX or more (recommended)

* Printing width: 1,500mm, Printing mode: bidirectional. Printing speeds vary depending on such factors as image printed, firmware version, operating state of PC and print settings.

Dimensions & Weight

Printer

4,610 (W) x 2,500 (D) x 2,070 (H) mm
(181 x 98 x 81 in)
Approx. 3,910 kg (8,620 lb)

Control Box

660 (W) x 1,500 (D) x 2,290 (H) mm
(26 x 59 x 90 in)
Approx. 400 kg (882 lb)

Ink Rack (Exclude Ink)

Approx. 240 kg (529 lb, not including ink)

Working Area Dimensions:

8,100 (W) x 5,400 (L) mm



GENESTA INK

Acid

Black, Cyan, Magenta, Yellow, Grey,
Red, Blue, Cobalt, Orange, Rubine,
Fluorescent Pink, Fluorescent Flavine,
ACROSS (Ink penetration liquid)

Reactive

Black, Cyan, Crimson, Yellow, Grey,
Red, Blue, Orange, Magenta,
ACROSS (Ink penetration liquid)

Disperse

Black, Cyan, Magenta, Yellow, Grey,
Red, Blue, Orange,
ACROSS (Ink penetration liquid)

Pigment

Black, Cyan, Magenta, Yellow, Grey,
Red, Green, Orange

Ink capacity

10 litres

©2025 Epson Singapore Pte Ltd. All Rights Reserved.
Reproduction in part or in whole, without the written permission from Epson, is strictly prohibited.

EPSON is a registered trademark of Seiko Epson Corporation.

All other product and company names used herein are for identification purposes only and are the trademarks or registered trademarks of their respective owners.

Epson disclaims any and all rights in those marks. Projected images shown herein are simulations. The actual product design and contents may vary. Specifications are subject to change without notice and may vary between countries. Please check with local Epson offices for more information.

Dealer's Stamp

Information correct at time of printing.
Printed August 2025

Find out more at www.epson.com.sg/gobig-direct-to-fabric



EpsonSingapore



EpsonSingapore



EpsonSoutheastAsia



Epson Singapore



EpsonSingapore

Epson Singapore Pte Ltd
Epson Authorised Service Centre

438B Alexandra Road, Block B Alexandra Technopark, #04-01/04, Singapore 119968. Tel: (65) 6586-5500
6 Harper Road, #04-01 Leong Huat Building, Singapore 369674. Epson Helpdesk: 800-120-5564. Please refer to www.epson.com.sg/contact for opening hours.