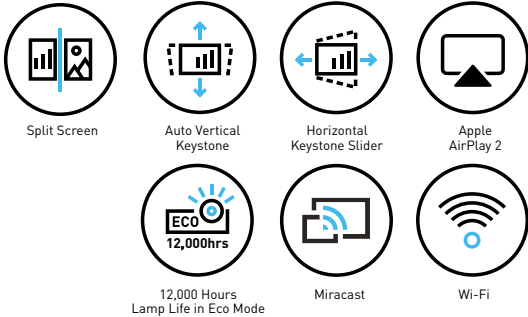


# SMART DISPLAY SOLUTIONS FOR EVERY NEED.



Enjoy crisp visuals and easy setup with Epson projectors, designed for modern workspaces and classrooms.

Take control of your presentations with Epson's reliable, high-performance business projectors. Whether you're leading a boardroom meeting or teaching in a busy classroom, these projectors deliver crystal-clear visuals that make your content shine. Say goodbye to complicated setups – our wireless projection feature lets you connect directly from compatible smart devices with ease, no extra software needed. Flexible, user-friendly and built to impress, Epson projector is your smart choice for impactful presentations every time.



## ENGINEERED FOR good



|                                                                                                                                                                                |                                                                                                                                                                                    |                                                                                                                                                               |
|--------------------------------------------------------------------------------------------------------------------------------------------------------------------------------|------------------------------------------------------------------------------------------------------------------------------------------------------------------------------------|---------------------------------------------------------------------------------------------------------------------------------------------------------------|
| <b>Sharper, Brighter Visuals</b><br>Epson's 3LCD technology delivers sharp visuals with up to 4,100 lumens <sup>2</sup> , ensuring vibrant images even in bright environments. | <b>Designed for Usability</b><br>With their compact design and portability, these projectors offer multiple connectivity options, ensuring instant setup and seamless performance. | <b>Durable Performance</b><br>Enjoy reliable performance with various user-friendly options and an extended lamp life, ensuring consistent results over time. |
|--------------------------------------------------------------------------------------------------------------------------------------------------------------------------------|------------------------------------------------------------------------------------------------------------------------------------------------------------------------------------|---------------------------------------------------------------------------------------------------------------------------------------------------------------|

For complete product features, refer to Table 1: Projector Features Overview.





# Outstanding Image Quality

Epson's 3LCD technology delivers exceptional color brightness, ensuring vibrant, clear visuals even in well-lit conference rooms, classrooms, or retail spaces. With up to 4,100 lumens\*, these projectors provide superior clarity and impact, making them the perfect choice for professional presentations in bright environments.

\*For EB-FH54.

## Higher Colour Light Output

Epson's 3LCD technology delivers bright images with vivid colours, offering balanced white and colour light output, along with superior colour brightness for more vibrant images than 1-chip projectors.

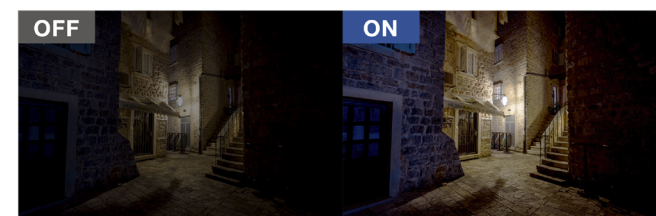


1-chip Technology



## Scene Adaptive Gamma Except for EB-E24

Automatically adjusts the gamma level based on the content being displayed, optimising contrast and image quality for each scene. It analyses the image frame by frame, dynamically adjusting the gamma to ensure a more vivid and natural-looking picture, even in both dark and bright scenes.



# Bigger Screens for Better Impact

Epson business projectors deliver larger images, with screen sizes up to 300 inches\*, offering better visibility and brighter images that remain clearly visible even from the back of the room. This ensures a stress-free viewing experience for everyone.

\* Maximum screen size varies depending on model.



## The Importance of Higher Resolution

High-resolution projectors capture every detail from PCs and other devices, ensuring seamless communication. As screen size increases, so does the need for higher resolution to maintain clear, sharp images. For example, SVGA resolution often falls short in providing the clarity required for smooth communication.

Epson's latest business projector lineup offers models in XGA, WXGA, and 1080p resolutions. The 1080p model, in particular, delivers crisp, sharp text and more detailed images, making it ideal for professional presentations.

**Higher Resolution = Clearer Images and Sharper Text**

**Higher Resolution = Display More Detail and Information**



## Split Screen Function for Corporate Except for EB-FH54

The split screen function allows two image sources to be projected on a single screen, eliminating the need for a second projector. This feature is ideal for video conferencing, enabling efficient multitasking during meetings.



## Split Screen Function for Education Except for EB-FH54

In classrooms, the split screen function projects two images from separate devices, both wired and wirelessly. Connecting a projector to a document camera and a PC or tablet makes lessons more interactive and engaging.







# Portability Meets Versatility

## Easy To Carry

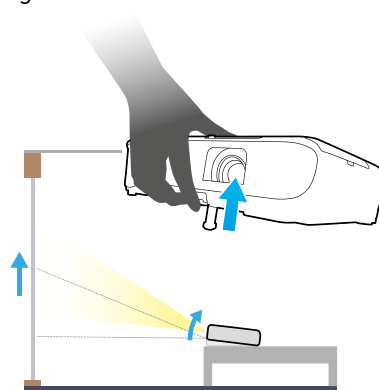
The Epson business projectors feature a compact design, making them easy to carry from one room to another, especially when compared to conventional flat panel displays (FPD).



Note: The projector carrying case is sold separately as an optional accessory.

## Quick and Easy Positioning

Allows for easy adjustment and a wide range of projection positions using the foot lever.



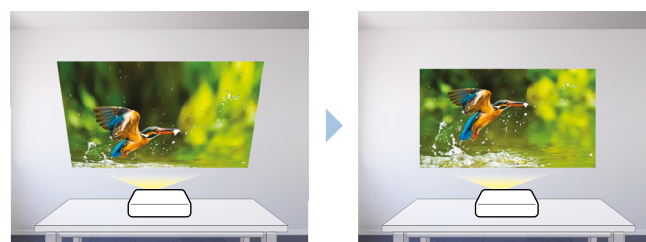
## Optical Zoom Except for EB-E12, E24

Optical zoom provides the flexibility to adjust the projector's installation location while still maintaining the desired picture size and quality.



## Auto Vertical Keystone Except for EB-E12, E24

Saving setup time, Auto Vertical Keystone automatically detects and corrects image distortion when the foot lever is used to adjust the height of a projected image.



## Auto Source Search

Automatically detects the input signal and projects the image without the need for a remote control or manual button operation.

## Horizontal Keystone Slider Except for EB-E12

With the easy-to-use sliding Horizontal Keystone Slider, screen corrections can be done quickly, easily, and accurately, even in a limited space.



# Plug-in and Present

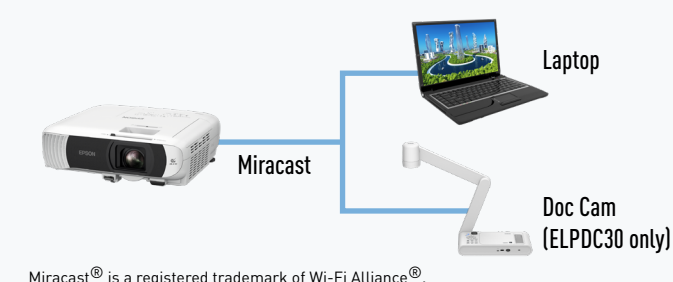
## Screen Mirroring with Miracast® Only for EB-FH54

Miracast support makes it easy to connect smart devices or laptops to the projector wirelessly– no additional accessories or app installations required. This quick and seamless connection enables smarter presentations and eliminates the hassle of messy cables.

## Dual Connection

Easily connect to two devices simultaneously using Miracast. This feature improves flexibility and saves time during meetings or lessons.

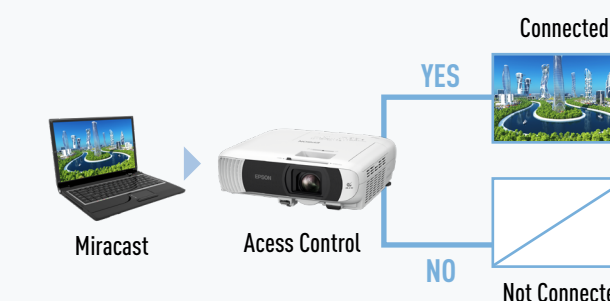
- Seamlessly switch between two connected devices without disconnecting each time
- Supports split screen with two Miracast sources for enhanced productivity



## Enhanced Secure Connection

Keep your wireless connections secure and under control with added Miracast safety features.

- Prevents unintended or unauthorised Miracast connections
- "Access Control" lets the moderator approve connection requests
- Specific devices can be added to a blocklist to deny future connection attempts



## Up to Four Screens at once with iProjection

Except for EB-E12, E24

Use the Epson iProjection\* app to wirelessly share and control content from up to four connected devices simultaneously. The app also allows you to transfer still images and files from your smart device for smooth, wireless projection.

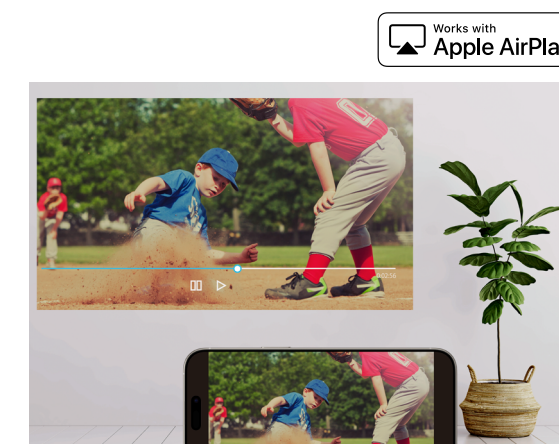


\* Epson iProjection eliminates the need for annoying cabling by transferring still images and supported files from smart devices to projectors, for smooth wireless projection.

## Seamless Streaming Made Easy with AirPlay 2

Only for EB-FH54

This projector features built-in Apple AirPlay 2, making it easy to stream videos, music, photos, and more directly from your iPhone, iPad, or Mac, with synchronized playback across other AirPlay-enabled devices.



Disclaimer: AirPlay 2 is a wireless media streaming protocol developed by Apple.



# Smart Features For Smooth Operation

## Lens Shutter Except for EB-E12

The lens shutter can be used to quickly stop and start projection without actually turning power off and on. This feature temporarily blocks an image projected onto a whiteboard, allowing the whiteboard to be used.



## Home Screen

The home screen offers quick access to frequently used functions. Connected interfaces can be recognised at a glance and switched instantaneously. The information needed when setting up a wireless connection is projected on-screen, making connection fast and easy.



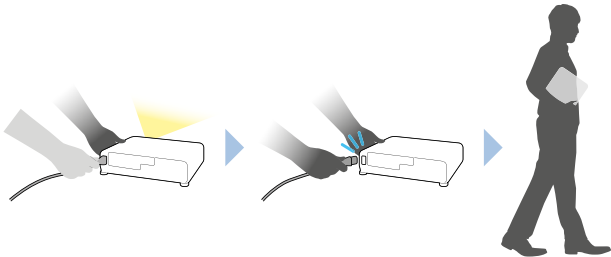
## Auto Power On Supported interface varies per model

This feature can be used to automatically power up a projector when the projector is connected by cable to a device such as PC, saving setup time.



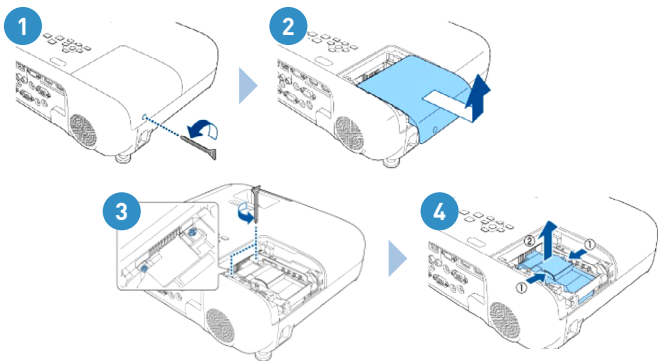
## Direct Power Off

Simply unplug the power cable to turn off the projector after use and speed up clean-up after meetings and lessons.



## Easy Lamp Replacement

When it's time to replace the lamp, simply purchase and install it yourself. No additional service required. This saves time and keeps maintenance hassle free.



## Built-in Speaker

A powerful speaker delivers clear sound even in large rooms, eliminating the need to set up additional speakers.



# Reliable and Low Maintenance

## Easy Maintenance and Longer Lamp Life

A long lamp life reduces maintenance and costs. The lamp lasts up to 12,000 hours in ECO mode, equivalent to 10 years of use. This reduces the frequency of lamp replacements, saving you time and money while lowering the total cost of ownership.



## WPA2 / WPA3-Enterprise For EB-FH54

WPA2/WPA3-Enterprise provides a safe method of wireless connectivity so that projectors can connect to a business environment over a secure wireless network.



Table 1

| PROJECTOR FEATURES OVERVIEW                       |                |                |                |                |
|---------------------------------------------------|----------------|----------------|----------------|----------------|
|                                                   | EB-E12         | EB-E24         | EB-W55         | EB-FH54        |
| White/Colour Light Output                         | 3,600lm        | 3,600lm        | 4,000lm        | 4,100lm        |
| Colour Light Output                               | •              | •              | •              | •              |
| Resolution                                        | XGA            | XGA            | WXGA           | 1080p          |
| Scene Adaptive Gamma                              | •              |                | •              | •              |
| Bigger and Brighter Images                        | •              | •              | •              | •              |
| Up to Four Screens at Once with iProjection       |                |                | •              | •              |
| Split Screen Function                             | •              | •              | •              |                |
| Split Screen Function for Wired/Non-Wired Devices |                |                | •              |                |
| Optical Zoom                                      |                |                | 1 – 1.2        | 1 – 1.62       |
| Auto Vertical Keystone                            |                |                | •              | •              |
| Horizontal Keystone Slider                        |                | •              | •              | •              |
| Screen Mirroring with Miracast®                   |                |                |                | •              |
| AirPlay 2                                         |                |                |                | •              |
| Built-in Wireless (Wi-Fi / Wi-Fi 6E*)             |                |                | •              | •              |
| USB-A 5V2A Power Supply                           |                |                | •              | •              |
| Lamp Life                                         | 12,000 hrs/Eco | 12,000 hrs/Eco | 12,000 hrs/Eco | 12,000 hrs/Eco |
| WPA2/WPA3-Enterprise                              |                |                |                | •              |
| Lens Shutter                                      |                | •              | •              | •              |
| Home Screen                                       | •              | •              | •              | •              |
| Auto Power On                                     | •              | •              | •              | •              |
| Direct Power On                                   | •              | •              | •              | •              |
| Built-in Speaker                                  | 2W             | 5W             | 2W             | 16W            |

\*Wi-Fi 6E is only available on EB-FH54.



SPECIFICATIONS

| MODEL NUMBER                         |                                 | EB-E12                                                                                                                                                          |
|--------------------------------------|---------------------------------|-----------------------------------------------------------------------------------------------------------------------------------------------------------------|
| SKU Code                             |                                 | V11HB55052                                                                                                                                                      |
| Projection Technology                |                                 | RGB liquid crystal shutter projection system (3LCD)                                                                                                             |
| Specifications of Main Parts         |                                 |                                                                                                                                                                 |
| LCD                                  | Size                            | 0.55" (C2 Fine)                                                                                                                                                 |
|                                      | Driving Method                  | Poly-silicon TFT active matrix                                                                                                                                  |
|                                      | Pixel Number                    | 786,432 dots (1024 x 768) x 3                                                                                                                                   |
|                                      | Native Resolution               | XGA                                                                                                                                                             |
|                                      | Aspect Ratio                    | 4:3                                                                                                                                                             |
|                                      | Pixel Arrangement               | Cross stripe                                                                                                                                                    |
|                                      | Type                            | No Optical Zoom / Focus (Manual)                                                                                                                                |
|                                      | F-Number                        | 1.44                                                                                                                                                            |
| Projection Lens                      | Focal Length                    | 16.7 mm                                                                                                                                                         |
|                                      | Zoom Ratio                      | 1.0 - 2.0 (Digital Zoom)                                                                                                                                        |
|                                      | Throw Ratio                     | 1.44 – 2.88                                                                                                                                                     |
|                                      | Lamp Type                       | 210 W UHE                                                                                                                                                       |
| Lightsource                          |                                 | Life (Normal / Eco)                                                                                                                                             |
| Screen Size (Projected Distance)     |                                 |                                                                                                                                                                 |
| Zoom: Wide                           |                                 | 30" – 350" [0.87 – 10.34 m]                                                                                                                                     |
| Zoom: Tele                           |                                 | 15" – 175" [0.87 - 10.34 m]                                                                                                                                     |
| Standard Screen Size                 |                                 | 60" [1.76 m]                                                                                                                                                    |
| Brightness <sup>*1</sup>             |                                 |                                                                                                                                                                 |
| White Light Output (Normal / Eco)    |                                 | 3,600 lm / 2,200 lm                                                                                                                                             |
| Colour Light Output                  |                                 | 3,600 lm                                                                                                                                                        |
| Light Output (Center) <sup>*2</sup>  |                                 | 3,700 lm                                                                                                                                                        |
| Contrast Ratio                       |                                 | 15,000:1                                                                                                                                                        |
| Geometric Correction                 |                                 |                                                                                                                                                                 |
| Vertical / Horizontal Keystone       |                                 | ±30° / ±30°                                                                                                                                                     |
| Connectivity                         |                                 |                                                                                                                                                                 |
| Digital Input                        | HDMI Type A                     | 2 (HDCP 1.4)                                                                                                                                                    |
| USB Input                            | USB Type B                      | 1 (For Firmware Update, Copy OSD Settings)                                                                                                                      |
| Internal Speaker                     |                                 | Monaural 2W x 1                                                                                                                                                 |
| Operating Temperature                |                                 | Low Altitude (0 - 2,286m/7,500ft): 5 - 40 °C <41 - 104 °F><br>High Altitude (Over 2,286m/7,500ft): 5 - 35 °C <41 - 95°F><br>20% - 80% Humidity, No Condensation |
| Operating Altitude                   |                                 | Over 1,500m/4,921ft with High Altitude Mode: 0 - 3,048m (0 -10,000ft)                                                                                           |
| Direct Power On / Off                |                                 | Yes                                                                                                                                                             |
| Start-Up Period                      |                                 | Less than 7 seconds (Epson Logo); Warm-up Period: 30 seconds                                                                                                    |
| Cool Down Period                     |                                 | Instant Off                                                                                                                                                     |
| Air Filter                           | Type                            | Electrostatic Filter                                                                                                                                            |
|                                      | Maintenance Cycle <sup>*3</sup> | 6,000 hours (Normal) / 12,000 hours (Eco)                                                                                                                       |
| Power Supply Voltage                 |                                 | 100 - 240 V AC ±10%, 50/60 Hz                                                                                                                                   |
| Power Consumption (220 - 240V)       |                                 |                                                                                                                                                                 |
| Lamp On                              | Normal                          | 332 W                                                                                                                                                           |
|                                      | Extended                        | 231 W                                                                                                                                                           |
| Standby (Normal / Eco)               |                                 | N/A / 0.3 W                                                                                                                                                     |
| Dimension Excluding Feet (W x D x H) |                                 | 302 x 234 x 77 mm                                                                                                                                               |
| Weight                               |                                 | Approx. 2.4kg                                                                                                                                                   |
| Fan Noise (Normal / Eco)             |                                 | 37dB / 28dB                                                                                                                                                     |

<sup>\*1</sup> Colour brightness (colour light output) and white brightness (white light output) will vary depending on usage conditions. Colour light output measured in accordance with IDMS 15:4; white light output measured in accordance with ISO 21118.  
<sup>\*2</sup> This light output value is measured at the centre of the screen as a reference value. There is no official standard for light output (Centre) measurements and this measurement is made based on the method set by Epson.  
<sup>\*3</sup> When used in the general office environment (the amount of floating dust: 0.04 - 0.2 mg/m3). Based on the Epson's in-house test results.

**Supplied Accessories**  
Power Cable: 1.8m, 3 wire  
Remote Control: Yes, with Alkaline AA Battery  
User Guide

**Optional Accessories**  
Spare Lamp: ELPLP97  
Air Filter: ELPAF32  
Soft Carrying Case: ELPKS69  
Ceiling Mount: ELPMB23  
Document Camera: ELPDC13, ELPDC21, ELPDC30  
Streaming Media Player: ELPAP12



©2025 Epson Singapore Pte Ltd. All Rights Reserved.  
Reproduction in part or in whole, without the written permission from Epson, is strictly prohibited.  
EPSON is a registered trademark of Seiko Epson Corporation.  
All other product and company names used herein are for identification purposes only and are the trademarks or registered trademarks of their respective owners.  
Epson disclaims any and all rights in those marks. Projected images shown herein are simulations. The actual product design and contents may vary. Specifications are subject to change without notice and may vary between countries. Please check with local Epson offices for more information.  
Apple, iPad and iPhone are trademarks of Apple Inc., registered in the U.S. and other countries. App Store is a service mark of Apple Inc.  
Android is a trademark of Google Inc.

Dealer's Stamp

Information correct at time of printing.  
Printed June 2025

SPECIFICATIONS

| MODEL NUMBER                         |                                 | EB-E24                                                                                                                                                          |
|--------------------------------------|---------------------------------|-----------------------------------------------------------------------------------------------------------------------------------------------------------------|
| SKU Code                             |                                 | V11HB51052                                                                                                                                                      |
| Projection Technology                |                                 | RGB liquid crystal shutter projection system (3LCD)                                                                                                             |
| Specifications of Main Parts         |                                 |                                                                                                                                                                 |
| LCD                                  | Size                            | 0.55" (C2 Fine)                                                                                                                                                 |
|                                      | Driving Method                  | Poly-silicon TFT active matrix                                                                                                                                  |
|                                      | Pixel Number                    | 786,432 dots (1024 x 768) x 3                                                                                                                                   |
|                                      | Native Resolution               | XGA                                                                                                                                                             |
|                                      | Aspect Ratio                    | 4:3                                                                                                                                                             |
|                                      | Pixel Arrangement               | Cross stripe                                                                                                                                                    |
|                                      | Type                            | No Optical Zoom / Focus (Manual)                                                                                                                                |
|                                      | F-Number                        | 1.44                                                                                                                                                            |
| Projection Lens                      | Focal Length                    | 16.7 mm                                                                                                                                                         |
|                                      | Zoom Ratio                      | 1.0 - 2.0 (Digital Zoom)                                                                                                                                        |
|                                      | Throw Ratio                     | 1.44 – 2.88                                                                                                                                                     |
|                                      | Lamp Type                       | 210 W UHE                                                                                                                                                       |
| Lightsource                          |                                 | Life (Normal / Eco)                                                                                                                                             |
| Screen Size (Projected Distance)     |                                 |                                                                                                                                                                 |
| Zoom: Wide                           |                                 | 30" – 350" [0.87 – 10.34 m]                                                                                                                                     |
| Zoom: Tele                           |                                 | 15" – 175" [0.87 - 10.34 m]                                                                                                                                     |
| Standard Screen Size                 |                                 | 60" [1.76 m]                                                                                                                                                    |
| Brightness <sup>*1</sup>             |                                 |                                                                                                                                                                 |
| White Light Output (Normal / Eco)    |                                 | 3,600 lm / 2,100 lm                                                                                                                                             |
| Colour Light Output                  |                                 | 3,600 lm                                                                                                                                                        |
| Light Output (Center) <sup>*2</sup>  |                                 | 3,700 lm                                                                                                                                                        |
| Contrast Ratio                       |                                 | 15,000:1                                                                                                                                                        |
| Geometric Correction                 |                                 |                                                                                                                                                                 |
| Vertical / Horizontal Keystone       |                                 | ±30° / ±30°                                                                                                                                                     |
| Connectivity                         |                                 |                                                                                                                                                                 |
| Analog Input                         | D-Sub 15pin                     | 2 (RGB, RGB Video)                                                                                                                                              |
|                                      | RCA                             | 1                                                                                                                                                               |
| Digital Input                        | HDMI Type A                     | 1 (HDCP 1.4)                                                                                                                                                    |
| Analog Output                        | D-Sub 15pin                     | 1 (RGB, RGB Video)                                                                                                                                              |
| USB Input                            | USB Type B                      | 1 (For Firmware Update, Copy OSD Settings)                                                                                                                      |
| Control I/O                          | RS-232C                         | 1 (D-Sub 9pin)                                                                                                                                                  |
| Audio Input                          | Stereo Mini                     | 2                                                                                                                                                               |
|                                      | Stereo Mini                     | 1                                                                                                                                                               |
| Audio Output                         | 2RCA                            | 1                                                                                                                                                               |
|                                      | (White x1, Red x1)              |                                                                                                                                                                 |
| Internal Speaker                     |                                 | Monaural 5W x 1                                                                                                                                                 |
| Operating Temperature                |                                 | Low Altitude (0 - 2,286m/7,500ft): 5 - 40 °C <41 - 104 °F><br>High Altitude (Over 2,286m/7,500ft): 5 - 35 °C <41 - 95°F><br>20% - 80% Humidity, No Condensation |
| Operating Altitude                   |                                 | Over 1,500m/4,921ft with High Altitude Mode: 0 - 3,048m (0 -10,000ft)                                                                                           |
| Direct Power On / Off                |                                 | Yes                                                                                                                                                             |
| Start-Up Period                      |                                 | Less than 7 seconds (Epson Logo); Warm-up Period: 30 seconds                                                                                                    |
| Cool Down Period                     |                                 | Instant Off                                                                                                                                                     |
| Air Filter                           | Type                            | Electrostatic Filter                                                                                                                                            |
|                                      | Maintenance Cycle <sup>*3</sup> | 6,000 hours (Normal) / 12,000 hours (Eco)                                                                                                                       |
| Power Supply Voltage                 |                                 | 100 - 240 V AC ±10%, 50/60 Hz                                                                                                                                   |
| Power Consumption (220 - 240V)       |                                 |                                                                                                                                                                 |
| Lamp On                              | Normal                          | 332 W                                                                                                                                                           |
|                                      | Extended                        | 231 W                                                                                                                                                           |
| Standby (Normal / Eco)               |                                 | N/A / 0.3 W                                                                                                                                                     |
| Dimension Excluding Feet (W x D x H) |                                 | 302 x 249 x 87 mm                                                                                                                                               |
| Weight                               |                                 | Approx. 2.7kg                                                                                                                                                   |
| Fan Noise (Normal / Eco)             |                                 | 37dB / 28dB                                                                                                                                                     |

<sup>\*1</sup> Colour brightness (colour light output) and white brightness (white light output) will vary depending on usage conditions. Colour light output measured in accordance with IDMS 15:4; white light output measured in accordance with ISO 21118.  
<sup>\*2</sup> This light output value is measured at the centre of the screen as a reference value. There is no official standard for light output (Centre) measurements and this measurement is made based on the method set by Epson.  
<sup>\*3</sup> When used in the general office environment (the amount of floating dust: 0.04 - 0.2 mg/m3). Based on the Epson's in-house test results.

**Supplied Accessories**  
Power Cable: 1.8m, 3 wire  
Remote Control: Yes, with Alkaline AA Battery  
User Guide

**Optional Accessories**  
Spare Lamp: ELPLP97  
Air Filter: ELPAF32  
Soft Carrying Case: ELPKS69  
Ceiling Mount: ELPMB23  
Document Camera: ELPDC13, ELPDC21, ELPDC30  
Streaming Media Player: ELPAP12



©2025 Epson Singapore Pte Ltd. All Rights Reserved.  
Reproduction in part or in whole, without the written permission from Epson, is strictly prohibited.  
EPSON is a registered trademark of Seiko Epson Corporation.  
All other product and company names used herein are for identification purposes only and are the trademarks or registered trademarks of their respective owners.  
Epson disclaims any and all rights in those marks. Projected images shown herein are simulations. The actual product design and contents may vary. Specifications are subject to change without notice and may vary between countries. Please check with local Epson offices for more information.  
Apple, iPad and iPhone are trademarks of Apple Inc., registered in the U.S. and other countries. App Store is a service mark of Apple Inc.  
Android is a trademark of Google Inc.

Dealer's Stamp

Information correct at time of printing.  
Printed June 2025



SPECIFICATIONS

| MODEL NUMBER                                   |                                  | EB-W55                                                                                                                                                          |
|------------------------------------------------|----------------------------------|-----------------------------------------------------------------------------------------------------------------------------------------------------------------|
| SKU Code                                       |                                  | V11HB58052                                                                                                                                                      |
| Projection Technology                          |                                  | RGB liquid crystal shutter projection system (3LCD)                                                                                                             |
| Specifications of Main Parts                   |                                  |                                                                                                                                                                 |
| LCD                                            | Size                             | 0.59" (C2 Fine)                                                                                                                                                 |
|                                                | Driving Method                   | Poly-silicon TFT active matrix                                                                                                                                  |
|                                                | Pixel Number                     | 1,024,000 dots (1280 x 800) x 3                                                                                                                                 |
|                                                | Native Resolution                | WXGA                                                                                                                                                            |
|                                                | Aspect Ratio                     | 16:10                                                                                                                                                           |
|                                                | Pixel Arrangement                | Cross stripe                                                                                                                                                    |
| Projection Lens                                | Type                             | Optical Zoom (Manual) / Focus (Manual)                                                                                                                          |
|                                                | F-Number                         | 1.49 – 1.72                                                                                                                                                     |
|                                                | Focal Length                     | 16.9 – 20.28 mm                                                                                                                                                 |
|                                                | Zoom Ratio                       | 1.0 - 1.2                                                                                                                                                       |
| Lightsource                                    | Throw Ratio                      | 1.30 – 1.56                                                                                                                                                     |
|                                                | Lamp Type                        | 210 W UHE                                                                                                                                                       |
|                                                | Life (Normal / Eco)              | 6,000 hours / 12,000 hours                                                                                                                                      |
|                                                | Screen Size [Projected Distance] |                                                                                                                                                                 |
| Zoom: Wide                                     |                                  | 33" – 320" [0.91 – 9.07 m]                                                                                                                                      |
| Zoom: Tele                                     |                                  | 33" – 320" [1.10 - 10.89 m]                                                                                                                                     |
| Standard Screen Size                           |                                  | 60" [1.68 - 2.02 m]                                                                                                                                             |
| Brightness*1                                   |                                  |                                                                                                                                                                 |
| White Light Output (Normal / Eco)              |                                  | 4,000 lm / 2,600 lm                                                                                                                                             |
| Colour Light Output                            |                                  | 4,000 lm                                                                                                                                                        |
| Light Output (Center)*2                        |                                  | 4,100 lm                                                                                                                                                        |
| Contrast Ratio                                 |                                  |                                                                                                                                                                 |
|                                                |                                  | 16,000:1                                                                                                                                                        |
| Geometric Correction                           |                                  |                                                                                                                                                                 |
| Vertical / Horizontal Keystone                 |                                  | ±30° / ±30°                                                                                                                                                     |
| Auto Keystone Correction                       |                                  | Yes (V only)                                                                                                                                                    |
| Connectivity                                   |                                  |                                                                                                                                                                 |
| Digital Input                                  | HDMI                             | 2 (HDCP 1.4)                                                                                                                                                    |
| USB Input                                      | USB Type A                       | 1 (For Firmware Update, Copy OSD Settings)                                                                                                                      |
|                                                | USB Type B                       | 1 (For Firmware Update, Copy OSD Settings)                                                                                                                      |
| Network                                        | Wireless LAN                     | Built-in                                                                                                                                                        |
| Internal Speaker                               |                                  |                                                                                                                                                                 |
|                                                |                                  | Monaural 2W x 1                                                                                                                                                 |
| Wireless Specification [Built-in Wireless LAN] |                                  |                                                                                                                                                                 |
| Supported Speed                                |                                  | IEEE 802.11a/b/g/n                                                                                                                                              |
| Supported Interface                            |                                  | Infrastructure, Simple AP (Wi-Fi Direct)                                                                                                                        |
| Security Type                                  |                                  | Infrastructure: Open, WPA2 / WPA3-PSK<br>Simple AP (Wi-Fi Direct): OPEN,<br>WPA2-PSK (AES)                                                                      |
| Operating Temperature                          |                                  |                                                                                                                                                                 |
|                                                |                                  | Low Altitude (0 - 2,286m/7,500ft): 5 - 40 °C <41 - 104 °F><br>High Altitude (Over 2,286m/7,500ft): 5 - 35 °C <41 - 95°F><br>20% - 80% Humidity, No Condensation |
| Operating Altitude                             |                                  |                                                                                                                                                                 |
| Direct Power On / Off                          |                                  | Over 1,500m/4,921ft with High Altitude Mode: 0 - 3,048m (0 -10,000ft)                                                                                           |
|                                                |                                  | Yes                                                                                                                                                             |
| Start-Up Period                                |                                  |                                                                                                                                                                 |
| Cool Down Period                               |                                  | Less than 7 seconds (Epson Logo); Warm-up Period: 30 seconds                                                                                                    |
|                                                |                                  | Instant Off                                                                                                                                                     |
| Air Filter                                     | Type                             | Electrostatic Filter                                                                                                                                            |
|                                                | Maintenance Cycle*3              | 6,000 hours (Normal) / 12,000 hours (Eco)                                                                                                                       |
| Power Supply Voltage                           |                                  |                                                                                                                                                                 |
| Power Consumption (220 - 240V)                 |                                  | 100 - 240 V AC ±10%, 50/60 Hz                                                                                                                                   |
| Lamp On                                        | Normal                           | 332 W                                                                                                                                                           |
|                                                | Extended                         | 231 W                                                                                                                                                           |
| Standby (Normal / Eco)                         |                                  | 2.0 / 0.3 W                                                                                                                                                     |
| Dimension Excluding Feet (W x D x H)           |                                  |                                                                                                                                                                 |
| Weight                                         |                                  | 302 x 234 x 87 mm                                                                                                                                               |
|                                                |                                  | Approx. 2.6kg                                                                                                                                                   |
| Fan Noise (Normal / Eco)                       |                                  |                                                                                                                                                                 |
|                                                |                                  | 37dB / 28dB                                                                                                                                                     |

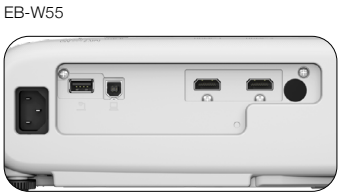
<sup>\*1</sup> Colour brightness (colour light output) and white brightness (white light output) will vary depending on usage conditions. Colour light output measured in accordance with IDMS 15:4; white light output measured in accordance with ISO 21118.  
<sup>\*2</sup> This light output value is measured at the centre of the screen as a reference value. There is no official standard for light output (Centre) measurements and this measurement is made based on the method set by Epson.  
<sup>\*3</sup> When used in the general office environment (the amount of floating dust: 0.04 - 0.2 mg/m3). Based on the Epson's in-house test results.

Find out more at [www.epson.com.sg/projectors](http://www.epson.com.sg/projectors)

**Epson Singapore Pte Ltd** 438B Alexandra Road, Block B Alexandra Technopark, #04-01/04, Singapore 119968. Tel: (65) 6586-5500  
**Epson Authorised Service Centre** 6 Harper Road, #04-01 Leong Huat Building, Singapore 369674. Epson Helpdesk: 800-120-5564. Please refer to [www.epson.com.sg/contact](http://www.epson.com.sg/contact) for opening hours.

**Supplied Accessories**  
Power Cable: 1.8m, 3 wire  
HDMI Cable: 1.8m  
Remote Control: Yes, with Alkaline AA Battery  
User Guide

**Optional Accessories**  
Spare Lamp: ELPLP97  
Air Filter: ELPAF32  
Soft Carrying Case: ELPKS69  
Ceiling Mount: ELPMB23  
USB Document Camera (EB-W55): ELPDC07  
Document Camera: ELPDC13, ELPDC21, ELPDC30  
Streaming Media Player: ELPAP12



©2025 Epson Singapore Pte Ltd. All Rights Reserved. Reproduction in part or in whole, without the written permission from Epson, is strictly prohibited.  
EPSON is a registered trademark of Seiko Epson Corporation.  
All other product and company names used herein are for identification purposes only and are the trademarks or registered trademarks of their respective owners.  
Epson disclaims any and all rights in those marks. Projected images shown herein are simulations. The actual product design and contents may vary. Specifications are subject to change without notice and may vary between countries. Please check with local Epson offices for more information.  
Apple, iPad and iPhone are trademarks of Apple Inc., registered in the U.S. and other countries. App Store is a service mark of Apple Inc.  
Android is a trademark of Google Inc.

Dealer's Stamp

Information correct at time of printing.  
Printed June 2025

SPECIFICATIONS

| MODEL NUMBER                                   |                     | EB-FH54                                                                                                                                                         |
|------------------------------------------------|---------------------|-----------------------------------------------------------------------------------------------------------------------------------------------------------------|
| SKU Code                                       |                     | V11HB59052                                                                                                                                                      |
| Projection Technology                          |                     | RGB liquid crystal shutter projection system (3LCD)                                                                                                             |
| Specifications of Main Parts                   |                     |                                                                                                                                                                 |
| LCD                                            | Size                | 0.62" (C2 Fine)                                                                                                                                                 |
|                                                | Driving Method      | Poly-silicon TFT active matrix                                                                                                                                  |
|                                                | Pixel Number        | 2,073,600 dots (1920 x 1080) x 3                                                                                                                                |
|                                                | Native Resolution   | Full HD                                                                                                                                                         |
|                                                | Aspect Ratio        | 16:9                                                                                                                                                            |
|                                                | Pixel Arrangement   | Cross stripe                                                                                                                                                    |
| Projection Lens                                | Type                | Optical Zoom (Manual) / Focus (Manual)                                                                                                                          |
|                                                | F-Number            | 1.51 – 1.77                                                                                                                                                     |
|                                                | Focal Length        | 18.2 – 29.1 mm                                                                                                                                                  |
|                                                | Zoom Ratio          | 1.0 - 1.62                                                                                                                                                      |
| Lightsource                                    | Throw Ratio         | 1.30 – 2.09                                                                                                                                                     |
|                                                | Lamp Type           | 230 W UHE                                                                                                                                                       |
|                                                | Life (Normal / Eco) | 5,500 hours / 12,000 hours                                                                                                                                      |
|                                                |                     |                                                                                                                                                                 |
| Screen Size [Projected Distance]               |                     |                                                                                                                                                                 |
| Zoom: Wide                                     |                     | 31" – 304" [0.88 – 8.88 m]                                                                                                                                      |
| Zoom: Tele                                     |                     | 31" – 304" [1.43 - 14.29 m]                                                                                                                                     |
| Standard Screen Size                           |                     | 60" [1.73 - 2.80 m]                                                                                                                                             |
| Brightness <sup>*1</sup>                       |                     |                                                                                                                                                                 |
| White Light Output (Normal / Eco)              |                     | 4,100 lm / 2,300 lm                                                                                                                                             |
| Colour Light Output                            |                     | 4,100 lm                                                                                                                                                        |
| Light Output (Center) <sup>*2</sup>            |                     | 4,400 lm                                                                                                                                                        |
| Contrast Ratio                                 |                     |                                                                                                                                                                 |
|                                                |                     | 16,000:1                                                                                                                                                        |
| Geometric Correction                           |                     |                                                                                                                                                                 |
| Vertical / Horizontal Keystone                 |                     | ±30° / ±30°                                                                                                                                                     |
| Auto Keystone Correction                       |                     | Yes (V only)                                                                                                                                                    |
| Internal Speaker                               |                     |                                                                                                                                                                 |
|                                                |                     | Monaural 16W x 1                                                                                                                                                |
| Connectivity                                   |                     |                                                                                                                                                                 |
| Digital Input                                  | HDMI                | 2 (HDCP 1.4)                                                                                                                                                    |
| Audio Output                                   | Stereo Mini         | 1                                                                                                                                                               |
| USB Input                                      | USB Type A          | 1 (For Wireless LAN, Firmware Update, Copy OSD Settings)                                                                                                        |
|                                                | USB Type B          | 1 (For Firmware Update, Copy OSD Settings)                                                                                                                      |
| Network                                        | Wireless LAN        | Built-in                                                                                                                                                        |
| Miracast                                       |                     |                                                                                                                                                                 |
| Certification                                  |                     | Wi-Fi CERTIFIED Miracast R2                                                                                                                                     |
| Supported Codec                                |                     | H.264 (AVC)                                                                                                                                                     |
| AirPlay 2                                      |                     |                                                                                                                                                                 |
| Supported Codec                                |                     | H.264(AVC), H.265(HEVC), AV1, VP9, MPEG-2, MPEG-4                                                                                                               |
| Wireless Specification (Built-in Wireless LAN) |                     |                                                                                                                                                                 |
| Supported Speed                                |                     | IEEE 802.11a/b/g/n/ac/ax                                                                                                                                        |
| Supported Interface                            |                     | Infrastructure, Simple AP (Wi-Fi Direct)                                                                                                                        |
| Security Type                                  |                     | Infrastructure: Open, WPA2 / WPA3-PSK, WPA2/WPA3-EAP<br>Supported EAP Type: PEAP, EAP-TLS<br>Simple AP (Wi-Fi Direct): WPA2-PSK (AES)                           |
| Operating Temperature                          |                     |                                                                                                                                                                 |
|                                                |                     | Low Altitude (0 - 2,286m/7,500ft): 5 - 40 °C <41 - 104 °F><br>High Altitude (Over 2,286m/7,500ft): 5 - 35 °C <41 - 95°F><br>20% - 80% Humidity, No Condensation |
| Operating Altitude                             |                     |                                                                                                                                                                 |
| Direct Power On / Off                          |                     | Over 1,500m/4,921ft with High Altitude Mode: 0 - 3,048m (0 -10,000ft)<br>Yes                                                                                    |
| Start-Up Period                                |                     |                                                                                                                                                                 |
| Cool Down Period                               |                     | Less than 8 seconds (Epson Logo); Warm-up Period: 30 seconds<br>Instant Off                                                                                     |
| Air Filter                                     |                     |                                                                                                                                                                 |
| Type                                           |                     | Electrostatic Filter                                                                                                                                            |
| Maintenance Cycle <sup>*3</sup>                |                     | 10,000 hours (Normal) / 20,000 hours (Eco)                                                                                                                      |
| Power Supply Voltage                           |                     |                                                                                                                                                                 |
| Power Consumption (220 - 240V)                 |                     | 100 - 240 V AC ±10%, 50/60 Hz                                                                                                                                   |
| Lamp On                                        | Normal              | 332 W                                                                                                                                                           |
|                                                | Extended            | 231 W                                                                                                                                                           |
| Standby (Normal / Eco)                         |                     | N/A / 0.3 W                                                                                                                                                     |
| Dimension Excluding Feet (W x D x H)           |                     |                                                                                                                                                                 |
| Weight                                         |                     | 309 x 282 x 90 mm<br>Approx. 3.1kg                                                                                                                              |
| Fan Noise (Normal / Eco)                       |                     |                                                                                                                                                                 |
|                                                |                     | 37dB / 28dB                                                                                                                                                     |

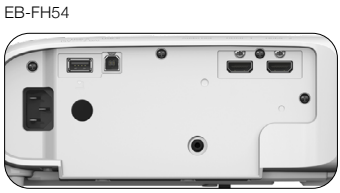
<sup>\*1</sup> Colour brightness (colour light output) and white brightness (white light output) will vary depending on usage conditions. Colour light output measured in accordance with IDMS 15:4; white light output measured in accordance with ISO 21118.  
<sup>\*2</sup> This light output value is measured at the centre of the screen as a reference value. There is no official standard for light output (Centre) measurements and this measurement is made based on the method set by Epson.  
<sup>\*3</sup> When used in the general office environment (the amount of floating dust: 0.04 - 0.2 mg/m3). Based on the Epson's in-house test results.

Find out more at [www.epson.com.sg/projectors](http://www.epson.com.sg/projectors)

**Epson Singapore Pte Ltd** 438B Alexandra Road, Block B Alexandra Technopark, #04-01/04, Singapore 119968. Tel: (65) 6586-5500  
**Epson Authorised Service Centre** 6 Harper Road, #04-01 Leong Huat Building, Singapore 369674. Epson Helpdesk: 800-120-5564. Please refer to [www.epson.com.sg/contact](http://www.epson.com.sg/contact) for opening hours.

**Supplied Accessories**  
Power Cable: 3m, 3 wire  
HDMI Cable: 1.8m  
Remote Control: Yes, with Alkaline AA Battery  
User Guide

**Optional Accessories**  
Spare Lamp: ELPLP97  
Air Filter: ELPAF54  
Soft Carrying Case: ELPKS70  
Ceiling Mount: ELPMB23  
USB Document Camera: ELPDC07  
Document Camera: ELPDC13, ELPDC21, ELPDC30  
Streaming Media Player: ELPAP12



©2025 Epson Singapore Pte Ltd. All Rights Reserved. Reproduction in part or in whole, without the written permission from Epson, is strictly prohibited.  
EPSON is a registered trademark of Seiko Epson Corporation.  
All other product and company names used herein are for identification purposes only and are the trademarks or registered trademarks of their respective owners.  
Epson disclaims any and all rights in those marks. Projected images shown herein are simulations. The actual product design and contents may vary. Specifications are subject to change without notice and may vary between countries. Please check with local Epson offices for more information.  
Apple, iPad and iPhone are trademarks of Apple Inc., registered in the U.S. and other countries. App Store is a service mark of Apple Inc.  
Android is a trademark of Google Inc.

Dealer's Stamp

Information correct at time of printing.  
Printed June 2025



# EPSON

Find out more at [www.epson.com.sg/projectors](http://www.epson.com.sg/projectors)



EpsonSingapore



EpsonSingapore



EpsonSoutheastAsia



Epson Singapore



EpsonSingapore

**Epson Singapore Pte Ltd**

**Epson Authorised Service Centre**

438B Alexandra Road, Block B Alexandra Technopark, #04-01/04, Singapore 119968. Tel: (65) 6586-5500

6 Harper Road, #04-01 Leong Huat Building, Singapore 369674. Epson Helpdesk: 800-120-5564. Please refer to [www.epson.com.sg/contact](http://www.epson.com.sg/contact) for opening hours.