



**WIDEN YOUR VIEW.  
 STRETCH YOUR DOLLAR.**

If you're looking for a good deal, this affordable series of business projectors are your answer. Capable of producing an amazing beyond Full HD resolution\* with up to 3,600 lumens, your images remain crystal clear even for large projections. On top of features such as built-in Wi-Fi\*\*, home screen interface, and auto search function, a long lamp life and lasting maintenance cycle help you keep your business running smoothly and cost-efficiently.



EB-U32/W31/X36/X31/S31



EB-U04/W04/X04/S04

- Beyond Full HD Resolution\*
- 10,000 Hours Lamp Life in Eco Mode
- Multi-PC Projection
- Horizontal Keystone Adjuster
- HDMI
- Split Screen
- Environmentally-Friendly

**ENGINEERED FOR BUSINESS**

**Impressive Image Quality**  
 Witness large, quality images with beyond Full HD resolution\* and 3,600 lumens of brightness.

**Seamless Connectivity and Usability**  
 Enjoy great convenience from ergonomic features ranging from split screen functionality to Epson iProjection.

**Essential Cost-savings**  
 Minimise costs with an impressive 10,000 hours for lamp life and maintenance cycle in eco-mode.



\*Available on EB-U32 and EB-U04 only.  
 \*\*Available on EB-U32 only.

## BUSINESS PROJECTORS

EB-U32/U04/W31/W04

EB-X36/X31/X04/S31/S04

With ergonomic features such as auto-power on and source search, these projectors deliver smooth and high-contrast presentations whenever and wherever you need. Enjoy superb high-resolution image display of 1920 x 1200 that are beyond Full HD resolution.



## Impressive Image Quality

### Incredible Beyond Full HD Resolution\*

Deliver a dynamic viewing experience with WUXGA 1920 x 1200 resolution image display without distortion in Video, Blu-ray and other graphic-intensive media. The projection images remain razor sharp and vivid, even on larger screens.

### High Contrast Ratio

Add brilliance to your presentations. Boasting stunning brightness of up to 3,600 lumens and a high contrast ratio of 15000:1, these projectors enable you to project beautiful, well-defined images wherever you are, regardless of ambient light.



\* Applicable for EB-U32 and EB-U04 only.

## Seamless Connectivity and Usability

### Epson iProjection\*

The iProjection application enables a wireless connection for projecting images and files from your smart devices. The "QR Code Reader" function makes this wireless connection even easier by simply reading the QR code that is projected on the screen from your smart devices.



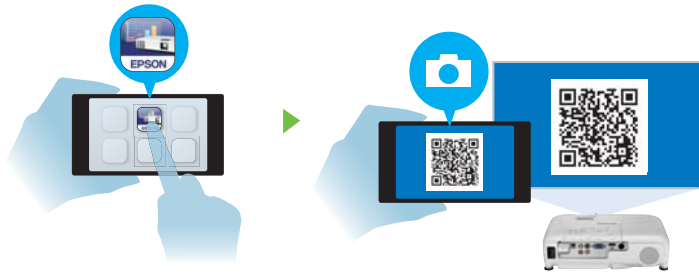
\* In iProjection, projector profile search, multi-screen display, distribution function, audio transfer, movie file transfer, interrupt connection disabling and encryption data transfer capabilities are not supported.



### Horizontal Keystone Adjuster

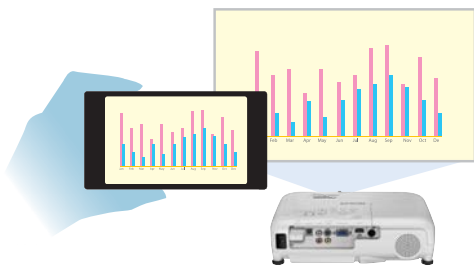
Deliver powerful presentations anywhere in the room. The easy-to-use sliding Horizontal Keystone Adjuster means screen corrections can be done quickly, easily and accurately, even in a limited space.

And with automatic vertical keystone detection and adjustment, there is no longer any need for awkward and time-consuming manual image adjustments that interrupt the smooth flow of your presentation delivery. This handy feature automatically detects the projector's vertical keystone distortion and corrects it instantly.



Open the iProjection in your smart device

Scan the QR code on the projection screen



Project the contents from your smart device wirelessly on the projection screen



### Wide-ranging Connectivity

Advanced connectivity features mean convenient and hassle-free projections for your presentations. With a wide-ranging interface, you can choose from a variety of connection methods including HDMI, VGA and LAN. In addition, the EB-U04 and EB-U32 are equipped with two HDMI ports, one of which is MHL-enabled, for greater digital compatibility.

Simply connect your MHL-compatible device with the MHL cable to fully enjoy your contents on the big screen. What's more, when connected, you can charge your smart device and operate it using the projector's remote control.



2HDMI + MHL\*



\* Applicable for EB-U32 and EB-U04 only.

## Wireless Transmission

Enjoy enhanced connectivity and flexibility with in-built Wi-Fi\* connectivity. Easily share and transmit images, texts and files from your smart devices using the "Epson iProjection" application for smooth and smart projections.



\* Applicable for EB-U32 only. For other models, wireless LAN adaptor ELPAP10 is required.

## Split Screen

Display images from two different sources side by side on the same screen for a more effective presentation. In video conferences, for example, images of presentation materials and remote participants can be shown simultaneously.



## Multi-PC Projection

With the control of a host PC, up to 50 terminals can be connected via the multi-PC projection to a single projector. The host PC acts as a moderator, selecting media from up to four PCs or smart devices to be projected simultaneously. With the moderator function, you can maintain control and prevent tampering of what's projected on screen.



## Home Screen

View and access your most frequently used functions immediately on the home screen. See all source information at a glance, no matter what the source input. With all the information you need right there on the home screen, wireless connections have never been easier.



## Auto Power On

With the auto power on function, projection starts automatically once a projection signal is detected via VGA cable, providing you with an easy and hassle-free presentation.



## Auto Source Search

With automatic detection of the input source, projection automatically begins without you having to manually switch the input.



## Redirected Exhaust

The front-facing exhaust is intelligently positioned to prevent anyone from being exposed to the hot exhaust, especially when on a narrow table. This allows your audience to fully concentrate on the presentation, even if they are seated beside or behind the projector.

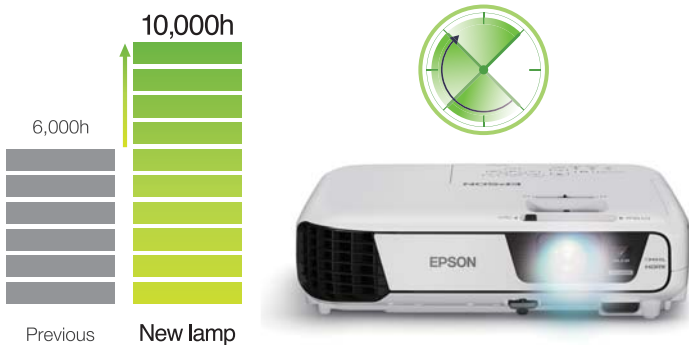


Other projectors with side exhaust

## Essential Cost-savings

### Longer Lamp Life

With a long lamp life of 10,000 hours in eco-mode, the frequency of costly lamp replacements is reduced, saving you time and money.



### Air Filter

With a maintenance cycle of 10,000 hours in eco-mode, the need for regular maintenance of the air filter is minimised to save you time and money.

### Easy Lamp Replacement

With the lamp cap located on the upper side of the projector, you can change lamps easily even if the projector is installed on the ceiling. Lamps can be replaced quickly without tools and dismantling of the projector from the ceiling mount.



### Eco Features

- Uses just 0.26W of power in standby mode
- Projector optics employ lead-free lenses
- Unpainted plastic housing reduces the environment impact
- The flame retardants used in the plastic housing do not contain chlorine or bromine

### Better Products for a Better Future™

For more information on Epson's environmental programmes, visit <http://global.epson.com/SR/environment>.

## PARTNERS IN PERFECTION

### Wireless LAN Adaptor ELPAP10



Supports 802.11 b/g/n connection  
Compatible with all Epson wireless-enabled projectors

### Ultra-portable Document Camera ELPDC06



Easily portable; 0.96kg / 2.11lbs  
1.92 megapixels with 15fps  
4 x digital zoom  
USB powered

### Ink Tank System Printer L365



Print Speed: Approx. 9.2ipm for default black and white prints  
Resolution: 5760 x 1440dpi  
Connectivity: Built-in WiFi, Epson Connect  
Print, copy scan

# SEE VIBRANT, REALISTIC COLOURS WITH HIGH COLOUR BRIGHTNESS.

**9** out of **10** PEOPLE PREFER IMAGES FROM **EPSON PROJECTORS**

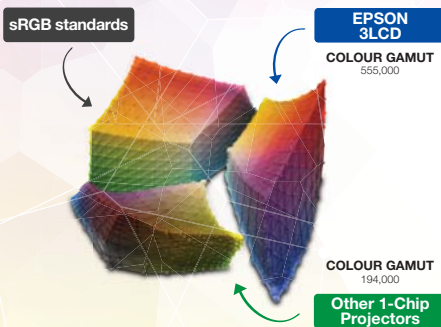
\*Based on a third-party study made by Radius Global Market Research of nearly 900 participants in the US

See colours like never before. Epson 3LCD projectors deliver brilliant colours that match its white brightness to give you balanced, realistic, and vibrant images. It's no wonder Epson projectors are the people's preferred choice.

UP TO **3X** WIDER COLOUR GAMUT. Epson Projectors

## Up to 3X Wider Colour Gamut

Colour gamut refers to the range of colours that can be reproduced by a display device – the wider the gamut, the more realistic it is. Epson 3LCD projectors project three times wider gamut that matches closely to the original standard of a display device (sRGB), as compared to 1-chip projectors.

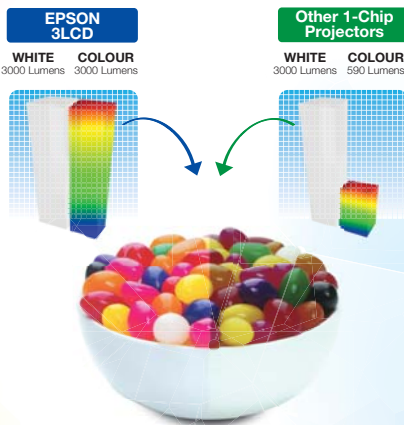


Comparing the yellow corners among the three gamuts, 1-chip projectors have a distinctly darker and smaller set of colours which are not as vibrant as Epson 3LCD projectors.

Up to **3x** Brighter Colours with Epson Projectors

## Up to 3X Brighter Colours

Epson 3LCD projectors deliver up to three times the colour brightness, effortlessly creating the same colour and white brightness, resulting in faithful images with superior colour balance.



**NO** RAINBOW EFFECT

## No Rainbow Effect

With 1-chip projectors, the spinning motion of the sequential colour wheels tend to cause colours to break out into distinct red, green and blue. Called the rainbow effect, this may cause users to suffer headaches with prolonged viewing. Epson projectors do not give out this effect, giving users a comfortable experience.



# EPSON REVOLUTIONISES PROJECTOR MARKET WITH 3LCD TECHNOLOGY AND LEADS AS WORLD'S NO.1\* PROJECTOR BRAND FOR 14 CONSECUTIVE YEARS!

\* Based on independent research by Futuresource Consulting

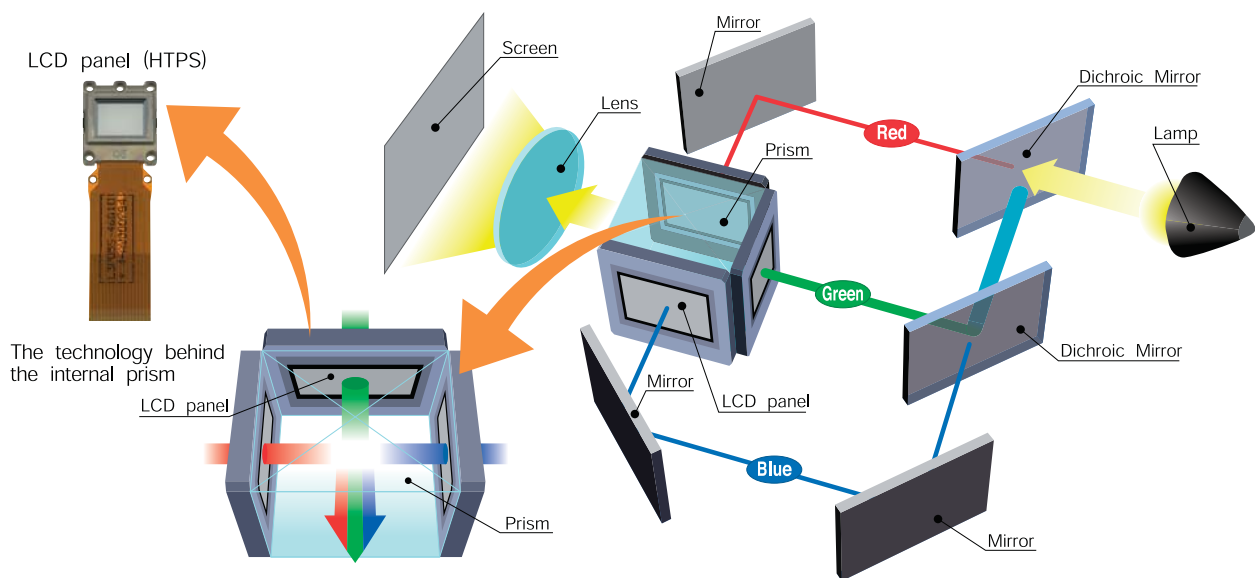
## Advantages of 3LCD Projection System

### Bright Images and Faithful Colour Reproduction

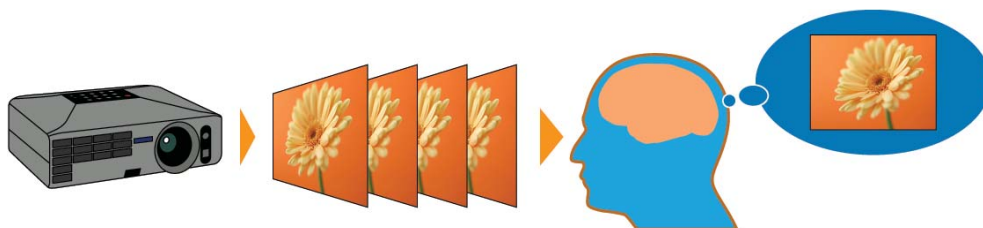
3LCD projectors offer all-time colour (Red, Green and Blue) projection thereby ensuring faithful full colour reproduction. This is suitable for projection of colour intensive images such as videos, photographs and colour charts.

### Incredible Details

3LCD projectors are able to produce an unparalleled range of grayscale images, which contributes to delivering incredible colour images that are smooth and seamless.



3LCD projector : RGB are projected at the same time, which makes the single composite image easy on the eyes.



\*\* HTPS (High Temperature Poly-Silicon) is an active matrix transmissive LCD. It is extremely small and produces high-quality images.

### Gentle on the Eyes

3LCD projectors' images do not suffer from colour break-up (commonly known as the rainbow effect). The projections are easy on the eyes as you will not be affected by any distorted pattern.

3LCD projectors use 3 separate LCD panels to form a continuous image containing all colours (red, blue and green) ensuring smooth video playback, even for rapid-motion images.

### Reliable Technology

With more than 70 million 3LCD chips shipped to date, the powerful and road-tested 3LCD projection technology is extremely reliable, and is trusted by many throughout to deliver sharp and true-to-life images.

# PROTECT YOUR PROJECTOR. USE GENUINE LAMPS.



Don't compromise on safety – use Epson genuine lamps to avoid damaging your projector. Eliminate the risk of melting parts of your projector, as well as breaks that result in high-voltage shutdown. With a 0% failure rate even after 2,000 hours of usage – compared to 70% in non-genuine lamps – Epson genuine lamps are safer and more reliable. Choose the best possible viewing experience filled with long-lasting sharpness and colour in every projected image with Epson.



## GENUINE EPSON LABEL

To ensure the best quality and safety when using your Epson Projector, look for the “Genuine EPSON Colour Shifting Label” on your projector lamp. Real quality and value, only with Epson genuine supplies.

## DANGERS OF NON-GENUINE LAMPS



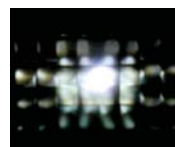
### UNRELIABLE

Counterfeit lamps deteriorate and break much faster than genuine ones.



### UNSAFE

Parts of your Epson projector such as the housing or wires may melt, disconnect, or become damaged when using non-genuine lamps.



### POOR IMAGE QUALITY

Counterfeit lamps may result in inaccurate colour projection, lower brightness levels, as well as flickering images that spoil your viewing experience.



MODEL NUMBER	EB-U32	EB-U04	EB-W31	EB-W04
<b>Projection Technology</b>	RGB liquid crystal shutter projection system			
<b>Specifications of Main Parts</b>				
LCD	Size	0.67" (D10, C <sup>2</sup> fine)	0.59" (D9, C <sup>2</sup> fine)	
	Native Resolution	WXGA		WXGA
Projection Lens	Type	Optical Zoom (Manual) / Focus (Manual)		
	F-Number	1.50 - 1.71		1.58 - 1.72
	Focal Length	20.42 - 24.50 mm		16.9 - 20.28 mm
	Zoom Ratio	1 - 1.2		
	Throw Ratio	1.38 - 1.68 (Wide - Tele)		1.30 - 1.56 (Wide - Tele)
Lamp	Type	200W UHE		
	Life (Normal / Eco) <sup>1</sup>	5,000 hours / 10,000 hours		
<b>Screen Size (Projected Distance)</b>				
Zoom: Wide	30" - 300" [0.87 - 9.02 m]		33" - 320" [0.9 - 9.0 m]	
Zoom: Tele	30" - 300" [1.07 - 10.98 m]		33" - 320" [1.08 - 10.8 m]	
Standard Size	60" screen 1.8 - 2.17 m		60" screen 1.68 - 2.02 m	
<b>Brightness<sup>2</sup></b>				
White Light Output (Normal / Eco)	3,200lm / 2,240lm	3,000lm / 2,100lm	3,200lm / 2,240lm	3,000lm / 2,100lm
Colour Light Output	3,200lm	3,000lm	3,200lm	3,000lm
<b>Contrast Ratio</b>	15,000:1			
<b>Internal Speaker(s)</b>				
Sound Output	2W Monaural		1W Monaural	
<b>Geometric Correction</b>				
Keystone	Vertical / Horizontal	±30° / ±30°		
Auto Keystone Correction	Yes (Vertical only)			
Horizontal Slide Keystone Correction	Yes			
Quick Corner	Yes			
<b>Connectivity</b>				
Analog Input	D-Sub 15pin	1 (Blue molding)		
	Composite	RCA x 1 (Yellow)		
	S-Video	N/A	1	
Digital Input	HDMI	2 (1 supports MHL)	1 (MHL supported)	1 (MHL not supported)
Audio Input	2 RCA (White / Red)	1		
USB Interface	USB Type A	1 (for USB Memory, Document Camera, Firmware Update)	1 (for USB Memory, Document Camera, Wireless LAN, Firmware Update)	
	USB Type B	1 (for USB Display, Mouse, K/B, Control, Firmware Update)		
Network	Wireless	Built in	Optional (ELPAP10)	
<b>Wireless Specifications</b>				
Supported Speed For Each Mode <sup>3</sup>	IEEE 802.11b: 11 Mbps, IEEE 802.11g: 54 Mbps, IEEE 802.11n: 130 Mbps			
Wireless LAN Security	WPA-PSK/WPA2-PSK (TKIP/AES), WPA2-PSK(AES)	WPA-PSK/WPA2-PSK(TKIP/AES), WPA2-PSK(AES) (Optional Wireless LAN Unit use)		
Supported Connection Mode	Infrastructure, Access Point			
<b>Operating Temperature</b>				
	5 - 35 °C <41 - 95 °F> (0m / 0ft - 2,286m / 7,500ft) 5 - 30 °C <41 - 86 °F> (over 2,286m / 7,500ft) (20% - 80% humidity, No condensation)			
<b>Operating Altitude</b>				
	0 - 3,000 m <0 - 9,843 ft> (over 1,500m / 4,921ft: with high altitude mode)			
<b>Direct Power On / Off</b>				
	Yes			
<b>Start-Up Period</b>				
	About 6 seconds, Warm-up Period: 30 seconds			
<b>Cool Down Period</b>				
	Instant Off			
<b>Air Filter</b>				
Maintenance Cycle	5,000 hours / 10,000 hours (Power consumption: Normal / Eco) <sup>4</sup>			
<b>Power Supply Voltage</b>				
	100 - 240 V AC ±10%, 50/60 Hz			
<b>Power Consumption (220 - 240V)</b>				
Lamp On (Normal / Eco)	277W / 207W			
Standby (Network On / Off)	2.4W / 0.26W			
<b>Dimension Excluding Feet (D X W X H)</b>	244 x 297 x 77 mm		234 x 297 x 77 mm	
<b>Weight</b>	2.6kg		2.4kg	
<b>Fan Noise (Normal / Eco)</b>	37dB / 28dB			

<sup>1</sup> Lamp life will vary depending upon mode selected, environmental conditions and usage. Lamp brightness decreases over time.

<sup>2</sup> Colour brightness (colour light output) and white brightness (white light output) will vary depending on usage conditions. Colour light output measured in accordance with IDMS 15:4; white light output measured in accordance with ISO 21118.

<sup>3</sup> Maximum speed and range is achievable when used with same enhanced mode technology. Actual data rates, features and performance may vary depending on your computer system, the environment and other factors.

<sup>4</sup> When used in the general office environment (the amount of floating dust: 0.04 - 0.2 mg/m<sup>3</sup>). Based on the Epson's in-house test results.

**Supplied Accessories**

Power Cable: 1.8m  
Computer Cable (VGA Cable): 1.8m  
USB Cable (Type A/B): 1.8m (EB-U32, EB-W31)  
Remote Control: Yes, with Alkaline AA Battery x 2  
Soft Carrying Case

**Optional Accessories**

Spare Lamp: ELPLP88  
Air Filter: ELPAF32  
Wireless LAN: ELPAP10 (EB-U04, EB-W31, EB-W04)  
Quick Wireless Connection USB Key: ELPAP09  
Ceiling Mount (White Colour): ELPMB23

EB-U32 / U04



EB-W31 / W04



©2015 Epson Singapore Pte Ltd. All Rights Reserved. Reproduction in part or in whole, without the written permission from Epson, is strictly prohibited.

EPSON and EXCEED YOUR VISION are registered trademarks of Seiko Epson Corporation.

All other product names and other company names used herein are for identification purposes only and are the trademarks or registered trademarks of their respective owners.

Epson disclaims any and all rights in those marks. Projected images shown herein are simulations. The actual product design and contents may vary. Specifications are subject to change without notice and may vary between countries. Please check with local Epson offices for more information.

Apple, iPad and iPhone are trademarks of Apple Inc., registered in the U.S. and other countries. App Store is a service mark of Apple Inc.

Android is a trademark of Google Inc.

Information correct as at August 2015

MODEL NUMBER	EB-X36	EB-X31	EB-X04	EB-S31	EB-S04	
<b>Projection Technology</b>	RGB liquid crystal shutter projection system					
<b>Specifications of Main Parts</b>						
LCD	Size	0.63" (D7)	0.55" (D9, C <sup>fine</sup> )	0.55" (D8)	0.55" (D7)	
Native Resolution		XGA			SVGA	
Projection Lens	Type	Optical Zoom (Manual) / Focus (Manual)		No Optical Zoom / Focus (Manual)		
	F-Number	1.6 - 1.74	1.58 - 1.72	1.44		
	Focal Length	18.4 - 22.08 mm	16.9 - 20.28 mm	16.7mm		
	Zoom Ratio	1 - 1.2		1.0 - 1.35 (Digital Zoom)		
	Throw Ratio	1.40 - 1.68 (Wide - Tele)	1.48 - 1.77 (Wide - Tele)	1.45 - 1.96 (Wide - Tele)		
Lamp	Type	200W UHE				
	Life (Normal / Eco) <sup>1</sup>	5,000 hours / 10,000 hours				
<b>Screen Size (Projected Distance)</b>						
Zoom: Wide		30" - 300" [0.84 - 8.66 m]	30" - 300" [0.9 - 9.0 m]	30" - 350" [0.88 - 10.44 m]		
Zoom: Tele		30" - 300" [1.01 - 10.42 m]	30" - 300" [1.08 - 10.8 m]	23" - 260" [0.88 - 10.44 m]		
Standard Size		60" screen 1.71 - 2.16 m	60" screen 1.8 - 2.17 m	60" screen 1.77 - 2.4 m		
<b>Brightness<sup>2</sup></b>						
White Light Output (Normal / Eco)		3,600lm / 2,520lm	3,200lm / 2,240lm	2,800lm / 1,960lm	3,200lm / 2,240lm	3,000lm / 2,100lm
Colour Light Output		3,600lm	3,200lm	2,800lm	3,200lm	3,000lm
<b>Contrast Ratio</b>		15,000:1				
<b>Internal Speaker(s)</b>						
Sound Output		2W Monaural	1W Monaural	2W Monaural	1W Monaural	
<b>Geometric Correction</b>						
Keystone	Vertical / Horizontal	±30° / ±30°				
Auto Keystone Correction		Yes (Vertical only)				
Horizontal Slide Keystone Correction		Yes				
Quick Corner		Yes				
<b>Connectivity</b>						
Analog Input	D-Sub 15pin	1 (Blue molding)				
	Composite	RCA x 1 (Yellow)				
	S-Video	1				
Digital Input	HDMI	1 (MHL not supported)				
Audio Input	2 RCA (White / Red)	1				
USB Interface	USB Type A	1 (for USB Memory, Document Camera, Wireless LAN, Firmware Update)				
	USB Type B	1 (for USB Display, Mouse, K/B, Control, Firmware Update)				
Network	Wireless	Optional (ELPAP10)				
<b>Wireless Specifications</b>						
Supported Speed For Each Mode <sup>3</sup>		IEEE 802.11b: 11 Mbps, IEEE 802.11g: 54 Mbps, IEEE 802.11n: 130 Mbps				
Wireless LAN Security		WPA-PSK/WPA2-PSK(TKIP/AES), WPA2-PSK(AES) (Optional Wireless LAN Unit use)				
Supported Connection Mode		Infrastructure, Access Point				
<b>Operating Temperature</b>						
		5 - 35 °C <41 - 95 °F> (On / Off - 2,286m / 7,500ft)				
		5 - 30 °C <41 - 86 °F> (over 2,286m / 7,500ft)				
		(20% - 80% humidity, No condensation)				
<b>Operating Altitude</b>						
		0 - 3,000 m <0 - 9,843 ft> (over 1,500m / 4,921ft: with high altitude mode)				
<b>Direct Power On / Off</b>		Yes				
<b>Start-Up Period</b>		About 6 seconds, Warm-up Period: 30 seconds				
<b>Cool Down Period</b>		Instant Off				
<b>Air Filter</b>						
Maintenance Cycle		5,000 hours / 10,000 hours (Power consumption: Normal / Eco) <sup>4</sup>				
<b>Power Supply Voltage</b>		100 - 240 V AC ±10%, 50/60 Hz				
<b>Power Consumption (220 - 240V)</b>						
Lamp On (Normal / Eco)		277W / 207W				
Standby (Network On / Off)		2.4W / 0.26W				
<b>Dimension Excluding Feet (D X W X H)</b>		234 x 297 x 77 mm				
<b>Weight</b>		2.4kg				
<b>Fan Noise (Normal / Eco)</b>		37dB / 28dB				

**Supplied Accessories**

Power Cable: 1.8m  
Computer Cable (VGA Cable): 1.8m  
USB Cable (Type A/B): 1.8m (EB-X36, EB-X31, EB-S31)  
Remote Control: Yes, with Alkaline AA Battery x 2  
Soft Carrying Case

**Optional Accessories**

Spare Lamp: ELPLP88  
Air Filter: ELPAF32  
Wireless LAN: ELPAP10  
Quick Wireless Connection USB Key: ELPAP09  
Ceiling Mount (White Colour): ELPMB23

EB-X36 / X31 / X04 / S31 / S04



©2015 Epson Singapore Pte Ltd. All Rights Reserved. Reproduction in part or in whole, without the written permission from Epson, is strictly prohibited.

EPSON and EXCEED YOUR VISION are registered trademarks of Seiko Epson Corporation.

All other product names and other company names used herein are for identification purposes only and are the trademarks or registered trademarks of their respective owners.

Epson disclaims any and all rights in those marks. Projected images shown herein are simulations. The actual product design and contents may vary. Specifications are subject to change without notice and may vary between countries. Please check with local Epson offices for more information.

Apple, iPad and iPhone are trademarks of Apple Inc., registered in the U.S. and other countries. App Store is a service mark of Apple Inc.

Android is a trademark of Google Inc.

Information correct as at August 2015

<sup>1</sup> Lamp life will vary depending upon mode selected, environmental conditions and usage. Lamp brightness decreases over time.

<sup>2</sup> Colour brightness (colour light output) and white brightness (white light output) will vary depending on usage conditions. Colour light output measured in accordance with IDMS 15:4; white light output measured in accordance with ISO 21118.

<sup>3</sup> Maximum speed and range is achievable when used with same enhanced mode technology. Actual data rates, features and performance may vary depending on your computer system, the environment and other factors.

<sup>4</sup> When used in the general office environment (the amount of floating dust: 0.04 - 0.2 mg/m<sup>3</sup>). Based on the Epson's in-house test results.