

# WHERE VIBRANCE MEETS VERSATILITY.

SureColor SC-V7000



## UV large format printing with a wide range of media suitability and application.

Epson's first UV flatbed large format printer, SC-V7000, brings forth an exceptional print in stunning colours and vivid reds across a flexible range of media of up to 80mm thick. Along with an intuitive and user-friendly operating system, the printer improves productivity, safety, and usability. Using Epson's patented MicroPiezo technology, the UV flatbed printer produces impressive colour-consistent, high quality prints suitable for both indoor and outdoor uses.



### IT'S IN THE DETAILS.

Epson Edge Print PRO

**ULTRACHROME**  
UV INK

#### Variety in Application

Print on a wide range of media of up to 80mm thick, suitable for signages, decors, promotional goods, and more.

#### Colour Consistency

The Variable Ink Droplet technology with 10-colour UltraChrome UV ink produces strikingly accurate prints, minimal graininess, and smooth graduations.

#### Certified Safety

Industrial quality support with automatic monitoring and maintenance, conforming to UL, FCC, ROHS safety standards, and attaining the Greenguard Gold certification.

## LARGE FORMAT UV FLATBED PRINTER SURECOLOR™ SC-V7000

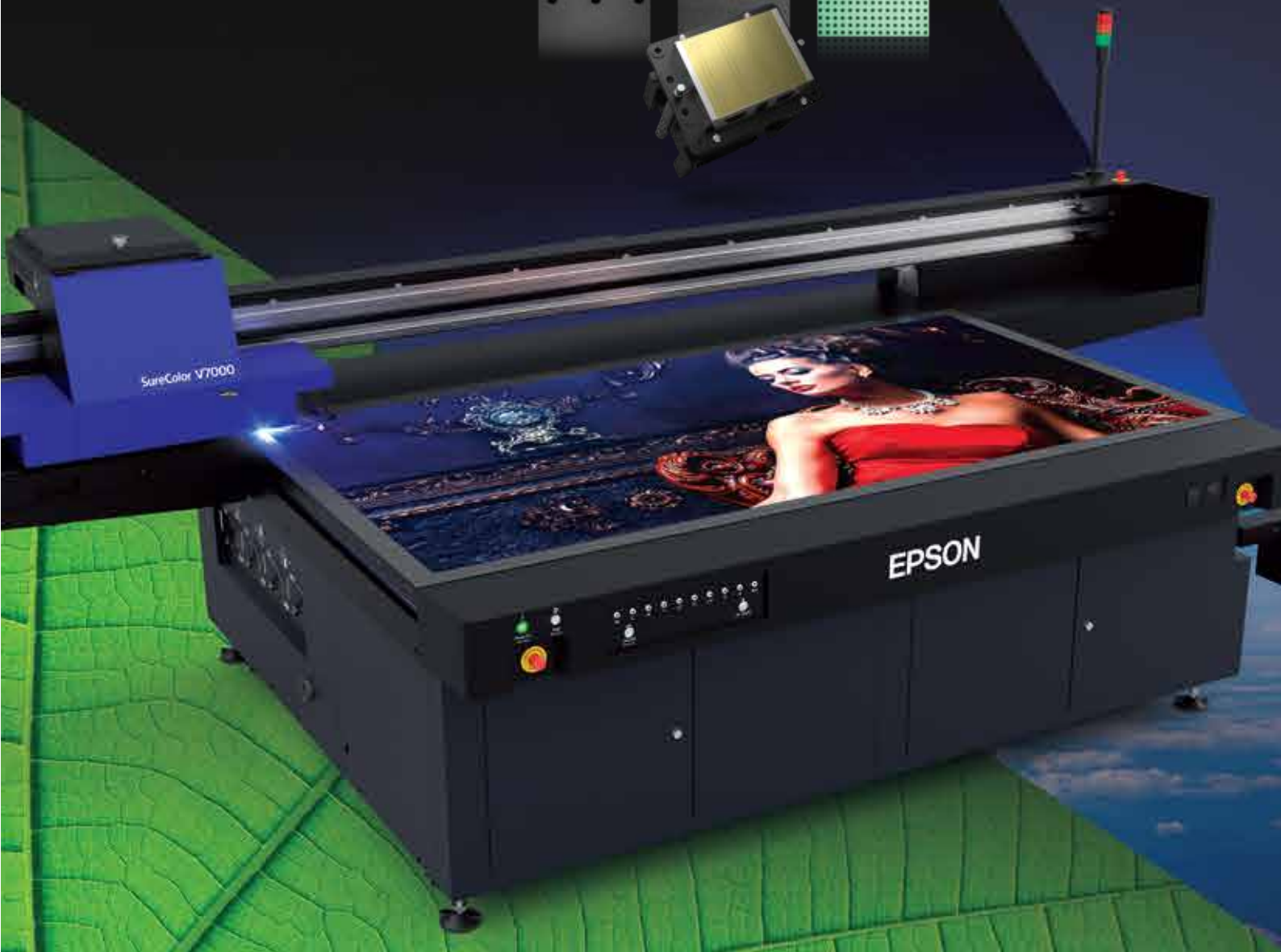
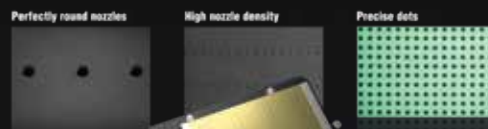
Suitable for businesses big and small, Epson's SC-V7000 UV flatbed large format printer produces accurate, colour consistent, and scratch-resistant prints in stunning colours including stimulating reds. Creating high-value signages and striking POS displays for outdoors, indoors, and wall applications, the large format UV printer prints on a wide variety of substrates including canvas, vinyl, aluminium composite boards, textiles, and more.

### Patented Technology



### Epson's MicroPiezo Technology

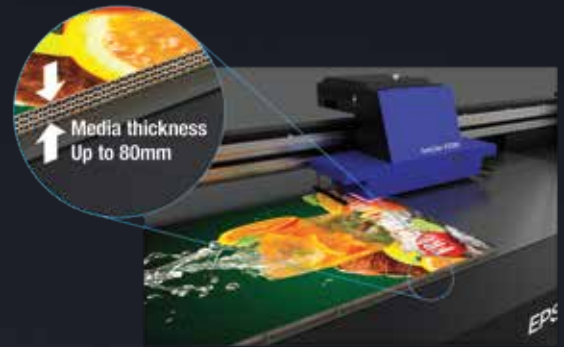
Using Epson's newly developed MicroPiezo technology, and Precision dot technology, the SC-V7000 printer has superb ink droplet control (as fine as 3.5 pL), producing smooth tones and graduation with low levels of graininess in images. The unique printhead layout facilitates high-speed printing, boosting efficiency for businesses.



# Wide Versatility

## Stunning Prints In Every Environment

The SureColor-V7000 allows for the versatility of various print media to be used, by automatic detection and adjustment to accommodate media of up to 80mm thick, thanks to its highly accurate substrate control. The four print zones can easily hold media in place securely. It prints directly onto foam board, poster board, real estate signage, and on a variety of materials, including wood, metal, and acrylic.

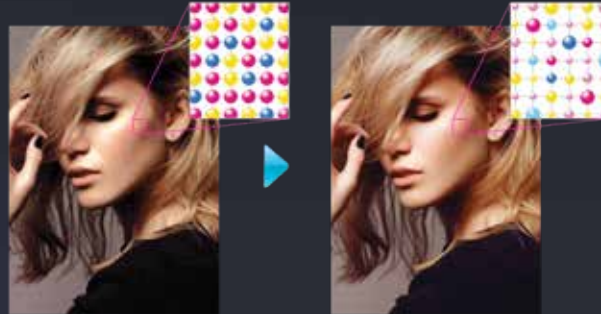


# Consistent and Eco-Conscious UV Inks

## Impeccable Print Quality

With up to 10 colour ink sets that provide low graininess and banding, the UV flatbed printer provides a highly vivid and consistent prints with its striking reds and stunning colours.

Epson's UV inks also expand the possibilities for businesses to print onto traditional signage materials, as well as a wider variety of substrates such as canvas, textiles, and film. With the newly developed eight colours on top of white and varnish inks, businesses can now ensure colour-consistent and vivid prints with SureColor SC-V7000.



Other brands

Epson SC-V7000 with Variable Droplet

## Eco-Conscious Sustainable Inks

In line with Epson's focus on sustainability, the water-based UV inks conform to industrial standards, with international safety accreditation such as the Greenguard Gold certification, the AgBB, as well as the A+ grading for the French-VOV.





# Enhanced Productivity

Epson's SC-V7000 gives businesses a competitive edge thanks to its high-speed printing with a maximum print area of 2.5 metres by 1.25 metres. Without losing productivity, the printhead layout enables simultaneous high-speed printing, providing enhanced efficiency for every print job.

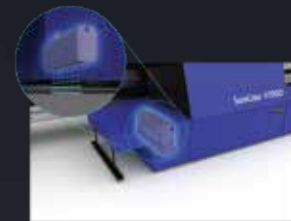
## Vacuum Zones

With four vacuum zones, the flatbed printer enables businesses to print on a variety of media including lightweight materials such as styrofoam boards.



## Integrated Ionizer

The inbuilt integrated ionizer helps to reduce static electricity, which in turn minimises dust from adhering to the surface of the print media. This will ensure stable image quality and ink jetting characteristics in end products.



## Unique Layout Pin

With layout pin positions on the printer, businesses can easily ensure media position is set accurately, reducing any human errors in production.



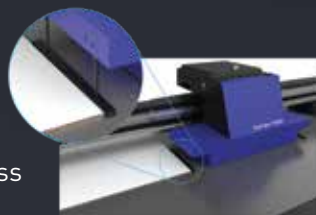
# Top class reliability

## Media Thickness Detection

Businesses can now rely on the automatic measurement of media thickness function to accurately pinpoint media height, reducing time spent on operation, and focus on other important tasks such as the pre-press and file preparation processes.

## Jam Detection

The in-built jam detection sensor helps businesses to prevent a head crash, even when a wrong media thickness was set.



## Extensive EMX Library

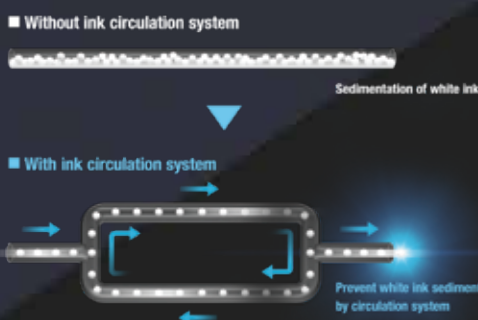
The SC-V7000 comes with Epson's extensive EMX library, providing operators with optimised colour profiles and mechanical settings on a wide range of sign and display materials from leading brands.

## Epson Cloud Solution PORT

Designed with simplicity and security in mind, the Epson Cloud Solution PORT provides a live view of your printer fleet production\*, equipment utilisation, and service information to better manage efficiency and optimise your Epson printing workflow.

## White Ink Circulation

The white ink circulation system reduces ink waste by circulating and stirring white ink, preventing ink sedimentation, and bringing extra savings for businesses.



Remote Monitoring\*



Production Efficiency Tracking & Reporting



Expedited Service Response and Printhead Ordering

\*All features of this system require an active internet connection and use of a supported browser.

# Versatility Redefined



Epson's SC-V7000 reinvents what large format printers can offer, allowing businesses to print directly on a wide variety of substrates including vinyl, textile, canvas, film, and rigid substrates\*, at 80mm max media thickness. Allowing print on aluminium composite boards, styrofoam boards, the possibilities to create with SC-V7000 is limitless.

## KEY FEATURES

### Proximity Sensor

UL and CE safety standard certified

### LED UV lamp

### Epson MicroPiezo Print Head

### Signal tower lamp

- Shows the printer status at a glance

### Layout pin

### UltraChrome UV ink

### Ioniser

- Automatic measurement of media thickness
- Jam detection sensor

### Multi Zone Vacuum System

- Max. Print Area: 2,500 (Width) x 1,250 (Depth) mm

\* Some materials will require pre-treatment, contact us to find out more.

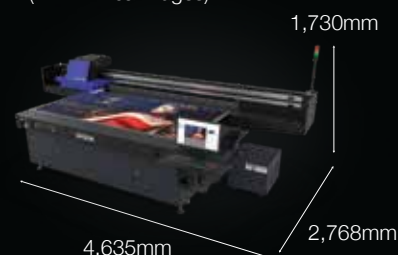
## SPECIFICATIONS

<b>MODEL NUMBER</b>	<b>SC-V7000</b>
<b>Printing Technology</b>	
Technology 1	MicroPiezo Inkjet Technology
Technology 2	Variable-Sized Droplet Technology
Print Head	MicroPiezo Printhead
Nozzle Configuration	11,520 nozzles (180 nozzles x 8 lines x 8 head)
Maximum Resolution	720 x 1,440 dpi
Minimum Ink Droplet Volume	3.5 pl
<b>Print Specifications</b>	
Print Speed	Colour High Speed: 360 x 720 dpi <sup>*1</sup>
Curing Method	LED-UV type <sup>*2</sup>
<b>Ink System</b>	
Ink Type	UV Curable Ink
Ink Brand Name	Epson UltraChrome UV Ink
Colours	Cyan, Magenta, Yellow, Black, Light Cyan, Light Magenta, Gray, Red, White, Varnish
Ink Capacity	1,000 ml
Ink Case	Ink Bottle
<b>Paper Handling</b>	
Maximum Printing Area	Max. 2,500 x 1,250 mm
Maximum Media Size	Max. 2,500 x 1,250 mm
Maximum Media Thickness	Max. 80 mm
Maximum Media Weight	Max. 50 kg/m <sup>2</sup> (non-concentrated)
	Suction System User Selectable 4 Zones (X Axis: 2 Zones. Y Axis: 2 Zones)
<b>Connectivity</b>	
Interface	Super-Speed USB (Type-B)
<b>Operating System Requirements</b>	
PC System Requirement	Windows 7 x64 SP1, Vista x64, 8 <sup>*3</sup>
<b>Utility Software</b>	
Bundled in CD	Windows – Epson Edge Print PRO
Web Delivery	Windows – UV Flatbed Controller, Epson Control Dashboard, Epson Device Admin
<b>Electrical Specifications</b>	
Voltage	AC 200V, 208V, 220V, 230V, 240V. 50/60Hz
Rated Current	29A
Volt-Ampere	5.7kVA
Power Consumption	Operating: Approx. 4.8kW
<b>Environmental Conditions</b>	
Temperature	Operating: 15°C to – 30°C
Humidity	Operating: 20% – 80% (no condensation)
Sound Pressure	Approx. 70db(A) <sup>*4</sup>
<b>Dimensions &amp; Weight</b>	
Dimension (W x H x D)	4,635 x 1,730 x 2,768 mm
Weight	Approx. 1,370 kg (with ink cartridges)

## Dimensions and Weight

### SC-V7000

**Weight:** Approx. 1,370kg  
(With ink cartridges)



### What's in the box\*

- Printer
- Initial setup tools
- Safety manual
- Epson Edge Print PRO

\*Items may differ slightly depending on countries.

### Inks & consumables

C13T49V110	Black (1000ml)
C13T49V210	Cyan (1000ml)
C13T49V310	Magenta (1000ml)
C13T49V410	Yellow (1000ml)
C13T49V510	Light Cyan (1000ml)
C13T49V610	Light Magenta(1000ml)
C13T49V710	Gray(1000ml)
C13T49V810	Red (1000ml)
C13T49V910	White(1000ml)
C13T49VA10	Varnish (1000ml)
C13T49V010	Cleaning (1000ml)
C13S210135	Coolant (9000ml)
C13T724000	Waste Ink Bottle (1000ml)

© 2021 Epson Singapore Pte Ltd. All Rights Reserved. Reproduction in part or in whole, without the written permission from Epson, is strictly prohibited. EPSON and EXCEED YOUR VISION are registered trademarks of Seiko Epson Corporation. All other product names and other company names used herein are for identification purposes only and are the trademarks or registered trademarks of their respective owners. Epson disclaims any and all rights in those marks. Print samples shown are simulations only. Specifications and product availability are subject to change without notice and may vary between countries. Please check with local Epson offices for more information.

Partner's Stamp

Information correct at time of printing  
Printed July 2021

<sup>\*1</sup> Refer to Print Speed sheet for print condition.

<sup>\*2</sup> Include water cooler. Equipment contains fluorinated greenhouse gas. Type of F-Gas: R410A. Total F-Gas mass (kg): 0.5. Total eq (CO<sub>2</sub>-kG): 1,045 (Euro area only).

<sup>\*3</sup> For utility software, please refer to system requirement for each utility software.

<sup>\*4</sup> 68.9db(A). Operation condition: Production mode, suction is On. Method: According to clause 1.7.4.2 of Machinery Directive 2006/42/EC.

Find out more at [www.epson.com.sg/gobig-signage](http://www.epson.com.sg/gobig-signage)

EpsonSingapore EpsonSingapore EpsonSoutheastAsia Epson Singapore

**Epson Singapore Pte Ltd**  
**Epson Customer Care Centre**

438B Alexandra Road, #04-01/04 Block B Alexandra Technopark, Singapore 119968. Tel: (65) 6586-5500  
100G Pasir Panjang Road, #01-09 Interlocal Centre, Singapore 118523. Epson Helpdesk: 800 120 5564

Opening hours: Monday – Friday, 9am to 5pm. Closed on Saturday, Sunday and Public Holiday. Please refer to [www.epson.com.sg/contact](http://www.epson.com.sg/contact) for updated opening hours.