

DISCOVER THE PINNACLE OF PRODUCTIVITY AND TEXTILE VIBRANCY.



State-of-the-art textile printing with impeccable quality, accuracy, and top class productivity.

Equipped with 6 specially developed PrecisionCore printheads for the highest print productivity, the ML-64000 is Epson's flagship model for the industry-leading Monna Lisa digital Direct-to-Fabric printers series. Designed for stable and high-quality printing at high speeds, the ML-64000 brings state-of-the-art inkjet printing and manufacturing technologies together to guarantee the best printing results.



IT'S IN THE DETAILS.



PRECISIONCORE
PRINTHEAD

High Quality & Productivity

Reaching a print speed of 740 square metres per hour (600x600 dpi - 2 pass), the ML-64000 produces high-quality prints with exceptional efficiency.

Stable & Uninterrupted Operation

Producing consistent print quality even at high speeds, its 10-litre, high capacity ink cartridges with a sub-tank system also allow for uninterrupted production.

Extensive Software Compatibility

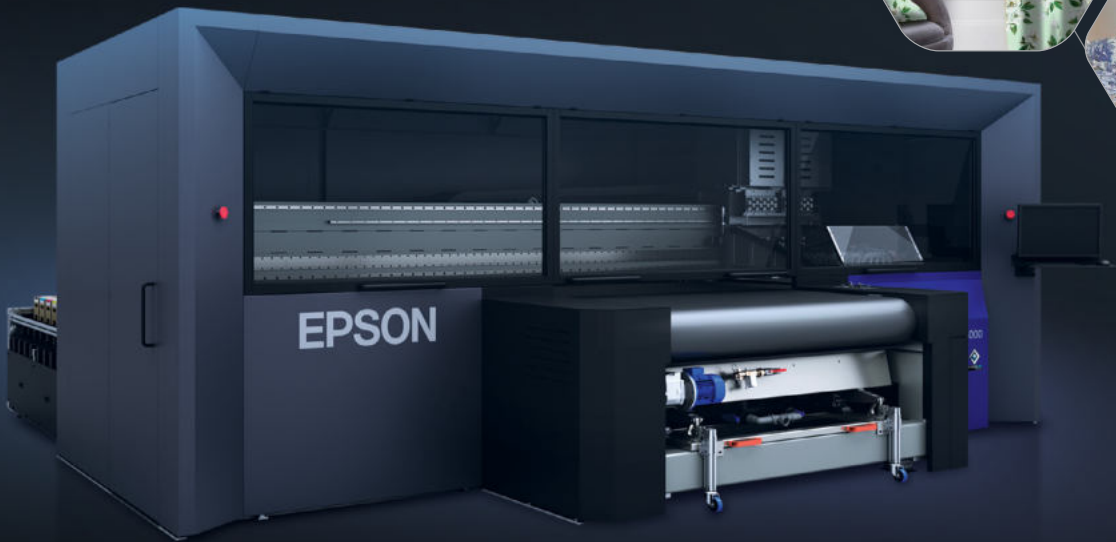
The ML-64000 supports the use of Epson Edge Print Textile, a specially designed RIP software for the Monna Lisa series, as well as other RIPs and textile CADs.

DIRECT-TO-FABRIC TEXTILE PRINTER MONNA LISA ML-64000

Built for high productivity without compromising the print quality, the ML-64000 helps your businesses meet the needs of a competitive and dynamic textile market. Designed with 64 PrecisionCore MicroTFP printheads for accuracy, achieve 740m²/h print speeds without compromising on print quality. Offering unprecedented performance and the highest printing quality, ML-64000 is the solution to scale up your production to a whole new level.

Epson Digital Textile Total Solution

A fully integrated system for industrial digital printing on textiles, Epson's Total Solution ensures the best printing results with maximum productivity on your ML-64000. Total Solution is the fully integrated system for industrial digital printing on textiles, where all components belong to the same process to guarantee the best printing results and utmost customer satisfaction.



High Print Quality & Productivity

Boasting an impressive print speed of 740 square metres per hour (2-pass printing at 600 x 600 dpi), the ML-64000 also utilises Epson Precision Dot technology, to print with accuracy on different types of fabrics for small to large lot orders daily. With an efficient fabric loading and dragging system, the textile printer is designed to ensure highly precise printing speed and quality.

Stable Operation with Minimal Downtime

The ML-64000 is designed to operate with unprecedented usability and stability, realised by Epson's advanced cleaning mechanisms and automated adjustment functions. A fluff blower system removes fluff from the fabric surface, and an ink mist extraction system helps minimise nozzle clogging. The Nozzle Verification technology also detects missing dots and adjusts ink delivery to maintain image quality and reduce printing errors.



Easy Ink Management

GENESTA is a family of inks specifically designed for use with the Monna Lisa series of Direct-to-Fabric printers. Epson's GENESTA inks are available in four different types — Acid, Reactive, Disperse, and Pigment — to suit your application needs. The vacuum-packed degassed ink comes in hot-swapped 10-litre bag-in-box packs and is dispensed via an exclusive ink management system that maximises efficiency and minimises waste.



High-capacity degassed ink cartridges (10L)

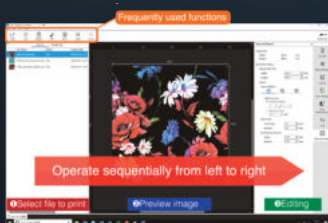
Built-in RGB Camera

With high-accuracy head alignment technology and automatic calibration by the built-in RGB camera, printhead replacement and calibration can be completed in as little as 30 minutes. In addition, the Epson Remote Monitoring System reduces downtime and service calls by allowing quick response to potential problems.

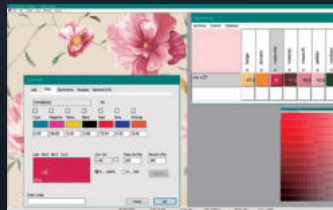


Original RIP Software for Digital Textile Printing

Our original RIP software, Epson Edge Print Textile, has an intuitive interface for an easy 3-step left-to-right operation, as well as step & repeat, hot folders, colour replacement for matching spot colours, and other convenient features. The optional ColorBlend pre-processing software also lets you create colour variations (Colorways), control ink penetration, generate ICC profiles and perform other pre-processing tasks.



Epson Edge Print Textile RIP software



ColorBlend software

Easy Operation

The printer's ease of usage is enhanced by a 9-inch LCD touch screen panel that displays current printer status, operating instructions, and regular maintenance procedures to ensure a smooth operation for your ML-64000.

Environmentally Conscious Printing

Epson's eco-friendly inks offer printing companies in the textile production chain considerable benefits in terms of environmental impact and compliance with the laws, regulations, certifications and restrictive specifications produced by customers and brands in the fashion industry. Inkjet printing and the ability to customise short printing runs will be the future of textile printing.



Global Organic Textile Standard



Epson Cloud Solution PORT

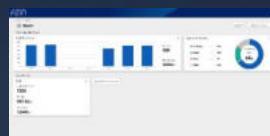
Improving operational efficiency and troubleshooting issues quickly at production sites, Epson's Cloud Solution PORT allows users to monitor equipment across several sites, or several printers from one site, from the production floor or remotely, on a PC or mobile device. Utilising the printer fleet management, customers will also be able to control, analyse and manage their printer fleet centrally from one intuitive interface.

Grasp

Grasp the status of the printers.

Optimisation

Report the operating status of the printer.



Monitor

Epson remotely monitors the printers.

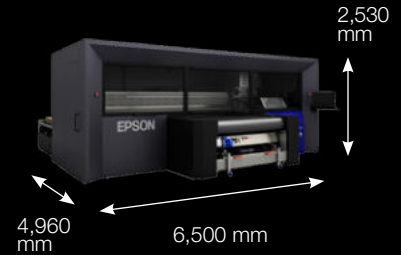


SPECIFICATIONS

MODEL NUMBER	ML-64000		
PRINT			
Printing Technology	PrecisionCore Inkjet Technology		
Number of Printheads	64		
Number of Colours	8		
Maximum Resolution	1,200 x 1,200 dpi		
Gradation Process	Variable-Sized Droplet Technology		
Maximum Print Width	1,800 mm (71")		
Maximum Print Length	Unlimited		
Maximum Fabric Width	1,800 mm (71")		
Maximum Fabric Thickness	10.0 mm		
PRINT SPEED			
Square ^{*1}	Typical Printing Speed 1 (m ² /h)	740 (600 x 600 dpi, 2 Pass)	
	Typical Printing Speed 2 (m ² /h)	533 (900 x 600 dpi, 3 Pass)	
	Typical Printing Speed 1 (sq ft/hr)	7,965 (600 x 600 dpi, 2 Pass)	
	Typical Printing Speed 2 (sq ft/hr)	5,737 (900 x 600 dpi, 3 Pass)	
	Linear ^{*1}	Typical Printing Speed 1 (lmt/h)	493 (600 x 600 dpi, 2 Pass)
		Typical Printing Speed 2 (lmt/h)	355 (900 x 600 dpi, 3 Pass)
Typical Printing Speed 1 (li ft/hr)		1,619 (600 x 600 dpi, 2 Pass)	
Typical Printing Speed 2 (li ft/hr)		1,166 (900 x 600 dpi, 3 Pass)	
FABRIC HANDLING			
Fabric Drive	Conveyor Belt with Thermoplastic Adhesive		
Belt Washing	Automatic		
DIMENSIONS			
Printer (W x D x H)	6,500 x 4,960 x 2,530 mm / 256 x 195 x 100 inch		
Control Box (W x D x H)	1,600 x 1,200 x 2,640 mm / 63 x 47 x 104 inch		
Ink Rack (W x D x H)	1,760 x 960 x 840 mm / 69 x 38 x 33 inch (without ink)		
WEIGHT			
Printer	Approx. 7,000 kg (15,432 lb)		
Control Box	Approx. 700 kg (1,543 lb)		
Ink Rack	Approx. 300 kg (661lb) (excluding ink)		
ENVIRONMENT CHARACTERISTICS			
Temperature (°C)	Operating: 20 °C – 30 °C (68 °F – 86 °F) Recommended: 220 °C – 28 °C (72 °F – 82 °F)		
Humidity	Operating: 40 – 60% (no condensation)		
ELECTRICAL SPECIFICATION			
Voltage	AC 220 – 240V (withstand voltage AC 400V)		
Frequency	50/60 Hz		
Power Consumption	Operating: Approx. 20.7WkVA		
CERTIFICATIONS			
Safety	Mexico: NOM-019-SCFI-1998 section 1.2 Brazil: NR12 Safety in Machinery and Equipment Work EU, EFTA countries, Turkey: EN ISO 12100, EN 13849-1, EN 60204-1, EN 1010-1, EN 55011, EN 61000-6-2 Morocco: Order No.2573-14, Order Noo.2574-14 Russia, Belarus, Kazakhstan, Ukraine: EN ISO 12100, EN 13849-1, EN 60204-1, EN 55011, EN 61000-6-2 Australia, New Zealand: AS CISPR11 India: (HSE, Declaration) Electrics and Information Technology Goods (Requirements for Compulsory Registration) Order, 2012 IS13252 (Part 1) Korea: KS C 9811, KS C 9610-6-2 Jordan: EN ISO 12100, EN 13849-1, EN 60204-1, EN 55011, EN 61000-6-2 Serbia: EN ISO 12100, EN 13849-1, EN 60204-1, EN 55011, EN 61000-6-2 Korea: KN11, KN61000-6-2		
NETWORK			
Transmission Speed	1000BASE-T (recommended)		

*1 Printing width: 1,500mm, Printing mode: Bi-directional. Printing speeds vary depending on several factors such as image printed, firmware version, operating state of PC and print settings.

PRINTER DIMENSION



WORKING AREA DIMENSION

Width: 8,500mm
Height: 2,640mm
Depth: 7,270mm

GENESTA INK

Acid

Black, Cyan, Magenta, Yellow, Grey, Red, Blue, Cobalt, Orange, Rubine, Fluorescent Pink, Fluorescent Flavine, ACROSS (Ink penetration liquid)

Reactive

Black, Cyan, Magenta, Yellow, Grey, Red, Blue, Orange, Crimson, ACROSS (Ink penetration liquid)

Disperse

Black, Cyan, Magenta, Yellow, Grey, Red, Blue, Orange, ACROSS (Ink penetration liquid)

Pigment

Black, Cyan, Magenta, Yellow, Grey, Red, Green, Orange

Ink Capacity

10 litres

©2021 Epson Singapore Pte Ltd. All Rights Reserved. Reproduction in part or in whole, without the written permission from Epson, is strictly prohibited.

EPSON and EXCEED YOUR VISION are registered trademarks of Seiko Epson Corporation.

All other product names and other company names used herein are for identification purposes only and are the trademarks or registered trademarks of their respective owners.

Epson disclaims any and all rights in those marks. Projected images shown herein are simulations.

The actual product design and contents may vary. Specifications are subject to change without notice and may vary between countries. Please check with local Epson offices for more information.

Apple, iPad and iPhone are trademarks of Apple Inc., registered in the U.S. and other countries. App Store is a service mark of Apple Inc.

Android is a trademark of Google Inc.

Dealer's Stamp

Information correct at time of printing.
Printed November 2021

Epson (Thailand) Co.,Ltd.

1 Empire Tower, 42nd Floor
South Sathorn Road, Yan Nawa, Sathon, Bangkok 10120

Contact Us

✉ : support@eth.epson.co.th
☎ : Epson Thailand
☎ : 02-460-9699

Follow Us



EpsonThailand

More Details

