



24-pin Dot Matrix Printer

LQ-590/LQ-2090

Setup

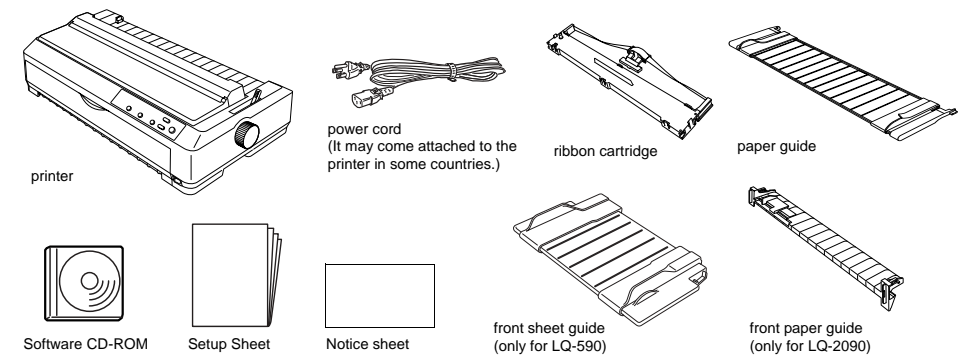
EPSON

Warnings, Cautions and Notes

- **Warnings** must be followed carefully to avoid bodily injury.
- **Cautions** must be observed to avoid damage to your equipment.
- Notes** contain important information and useful tips on the operation of your printer.

4047821-00
XXX

1 Unpacking the Printer



Remove the protective materials

Follow the directions on the Notice Sheet to remove the protective materials.
Save all packing and protective materials in case you need to ship the printer in the future.

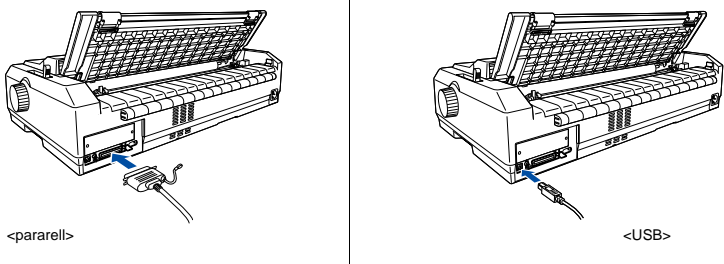
2 Assembling the Printer

1. Make sure the printer is turned off and unplugged.
2. Open the paper guide and printer cover, then pull them up to remove them.
3. Press the tabs on each side of the paper tension unit upward and lift the unit up and of the printer. Then, slide the print head to the middle of the printer by hand.
4. Remove the ribbon cartridge from the package.
5. Hold both sides of the ribbon guide and pull it until it is out of the cartridge.
6. Insert the ribbon cartridge into the printer at an angle as shown below, then press firmly on both sides of the cartridge to fit the plastic hooks into the slots on the printer.
7. Slide the ribbon guide into the print head until it clicks in place. Turn the ribbon-tightening knob to help feed the ribbon into place.
8. Reinstall the paper tension unit by lowering it onto the printer's mounting pegs. Then press down on both ends of the unit until it clicks into place.
9. Replace the printer cover by inserting the front tabs into the slots on the printer and lowering the cover into place. Then push it down until it clicks. Finally, attach the paper guide.

3 Connecting the Printer to Your Computer

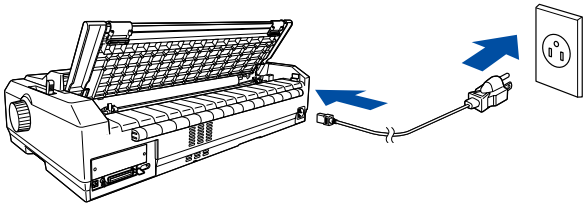
Connecting the printer

Make sure both the printer and computer are turned off, then connect the interface into the printer and computer. Use USB or parallel cable to connect the printer and computer.



Plugging in the Printer

Make sure the printer is turned off, then plug the power cord into the printer's AC inlet and a properly grounded electrical outlet.



4 Installing the Printer Software

Installing the software in Windows XP, Me, or 2000

Note:

- ❑ Installing the printer software for Windows XP or 2000 may require administrator privileges. If you have problems, ask your administrator for more information.
- ❑ Turn off all virus protection programs before installing the printer software.

1. Make sure that the printer is turned off, then insert the printer software CD-ROM into the CD-ROM drive. The SOFTWARE LICENSE AGREEMENT dialog box appears.

Note:

If the SOFTWARE LICENSE AGREEMENT dialog box does not appear, double-click **Epsetup.exe** in the CD-ROM.

2. Read the license agreement. If you agree with the terms, click **Agree**.
3. Click the name of the printer that you have.



4. Click **Install** and then follow the on-screen instructions.

Installing the software in Windows 98, 95, or Windows NT 4.0

Note:

- ❑ Installing the printer software for Windows NT 4.0 may require administrator privileges. If you have problems, ask your administrator for more information.
- ❑ The examples in the following section are from the Windows 98 operating system. They may vary in appearance from what actually appears on your screen; however, the instructions are the same.

1. Make sure that the printer is turned off, then insert the printer software CD-ROM into the CD-ROM drive. The SOFTWARE LICENSE AGREEMENT dialog box appears.

Note:

If the SOFTWARE LICENSE AGREEMENT dialog box does not appear, double-click **Epsetup.exe** in the CD-ROM.

2. Read the license agreement. If you agree with the terms, click **Agree**.
3. Click the name of the printer that you have.
4. Click **Install** and then follow the on-screen instructions.
5. When prompted, insert your Windows CD-ROM, and click **OK**. When the Windows installation screen is displayed, close the screen to continue with the driver installation.

Note:

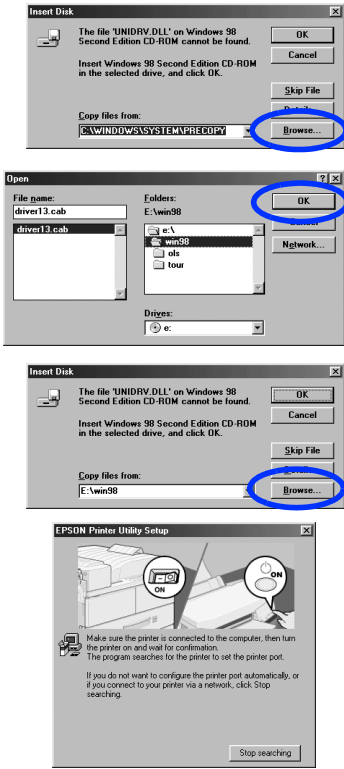
- ❑ If your PC shipped with Windows pre-installed, Setup may complete without requiring the Windows CD-ROM, and your printer is ready to use.
- ❑ If you receive a message saying the drive is not accessible, click **Cancel** and try again.
- ❑ If you are using Windows NT, please go to step 7.

6. Click **Browse** to select the appropriate path for the printer driver, then click **OK** and follow the instruction on the screen.

Note:

If you are using Windows NT, insert your Windows CD-ROM when prompted on the screen.

7. Select the appropriate file in the folder, then click **OK**.



8. When prompted, insert the Printer Driver Software CD-ROM, then click **Browse** to select the appropriate path.

Note:

- ❑ If you receive a message saying the drive is not accessible, click **Cancel** and try again.
- ❑ If a "System Error" message appears, click **Cancel**. The exact message differs depending on your version of Windows
- ❑ If you are using Windows NT, you do not need to specify a path.
- ❑ If you are using Windows 98, the Printer Utility Setup may start. If it does, follow the instructions on the screen.

9. Setup is complete. Your printer is ready to use.

For DOS programs

To control the printer from DOS application programs, you need to select the printer you are using. If the list in your application does not include your printer, choose the first available printer from the list below. Choose the Epson printer at the appropriate step in the installation or setup procedure. If the list in your application does not include your printer, choose the first available printer from the list below:

For LQ-590		For LQ-2090	
LQ-580 / LQ-570e	LQ-200	LQ-2080 / 2180	LQ-500
LQ-300+	LQ-500	LQ-2070 / 2170	LQ-860+ / 1060+
LQ-300	LQ-860+	LQ-1070 / 1070+	LQ-2550
LQ-870	LQ-2550	LQ-870 / 1170	LQ-2500
LQ-570 / 570+	LQ-2500	LQ-850+ / 1050+	LQ-800 / 1000
LQ-850+	LQ-800	LQ-850 / 1050	LQ-1500
LQ-850	LQ-1500	LQ-510 / 550 / 1010	
LQ-510 / 550		LQ-200	

Once the printer software has been successfully installed onto your computer, your printer is ready to use.

Viewing the Reference Guide

The *Reference Guide* provides detailed information on the Printer's functions, optional products, Printer software, troubleshooting, and technical specifications.

A *Reference Guide* icon is created on the desktop when the printer software is installed. To view the guide, double-click the **LQ-590/LQ-2090 Reference Guide** icon on the desktop. You can also access the *Reference Guide* via the Start menu. Click **Start**, point to **All programs** in Windows XP or **Programs** in Windows Me, 98, 95, 2000, or Windows NT 4.0, point to **EPSON**, then select **LQ590LQ2090 Reference Guide**.

Safety and Environmental Information

Hot Parts Caution Symbol



This symbol is placed on the print head and other parts to indicate that they may be hot. Never touch those parts just after the printer has been used. Let them cool for a few minutes before touching them.

Important Safety Instructions

Read all of these safety instructions before using the printer. In addition, follow all warnings and instructions marked on the printer itself.



Caution:

Be sure the AC power cord meets the relevant local safety standards.

- ❑ Use only the type of power source indicated on the printer's label.
- ❑ Connect all equipment to properly grounded power outlets.
- ❑ Do not use a damaged or frayed power cord.
- ❑ If you use an extension cord with the printer, make sure the total ampere rating of all devices plugged into the extension cord does not exceed the cord's ampere rating. Also, make sure the total ampere of all devices plugged into the wall outlet does not exceed the wall outlet's ampere rating.
- ❑ Unplug the printer before cleaning it, and always clean it with a piece of damp cloth only.
- ❑ Do not spill liquid onto the printer.
- ❑ Except as specifically explained in this guide, do not attempt to service the printer yourself.
- ❑ Unplug the printer and refer servicing to qualified service personnel under the following conditions:
 - i. If the power cord or plug is damaged.
 - ii. If liquid has entered the printer.
 - iii. If the printer has been dropped or the cabinet damaged.
 - iv. If the printer does not operate normally or exhibits a distinct change in performance.
- ❑ If you plan to use the printer in Germany, observe the following:
- ❑ To provide adequate short-circuit protection and over-current protection for this printer, the building installation must be protected by a 10- or 16-amp circuit breaker.

Note for German-speaking users:

Bei Anschluss des Druckers an die Stromversorgung muss sichergestellt werden, dass die Gebäudeinstallation mit einer 10 A- oder 16 A-Sicherung abgesichert ist.

Choosing a Place for the Printer

- ❑ Do not place the printer on an unstable surface or near a radiator or heat source.
- ❑ Do not block or cover the slots and openings in the printer's cabinet, and do not insert objects through the slots.
- ❑ Place the printer on a flat, stable surface. The printer will not operate properly if it is tilted or placed at an angle.
- ❑ Place the printer where you can easily connect it to a network interface cable, if necessary.
- ❑ Leave adequate room around the printer for easy operation and maintenance.
- ❑ Avoid using storing the printer in places subject to rapid changes in temperature and humidity. Keep it away from direct sunlight, strong light, heat sources, or excessive moisture or dust.
- ❑ Avoid places subject to shocks and vibrations.
- ❑ Place the printer near a wall outlet where you can easily unplug the power cord.
- ❑ Keep the entire computer system away from potential sources of electromagnetic interference, such as loudspeakers or the base units of cordless telephones.
- ❑ Avoid electrical outlet controlled by wall switches or automatic timers. An interruption in power can erase information in the memory of your printer or computer. Also avoid outlets on the same circuit as large motors or other appliances that can cause voltage fluctuations.
- ❑ Use a grounded power outlet; do not use an adapter plug.
- ❑ If you plan to use a printer stand, follow these guidelines:
 - Use a stand that can support at least 22 kg (48.5 lb) for LQ-590 or 28 kg (61.7 lb) for LQ-2090.
 - Never use a stand that tilts the printer. The printer should always be kept level.
 - Position your printer's power cord and interface cable so they do not interfere with paper feeding. If possible, secure the cables to a leg of the printer stand.