



Warnings must be followed carefully to avoid bodily injury.

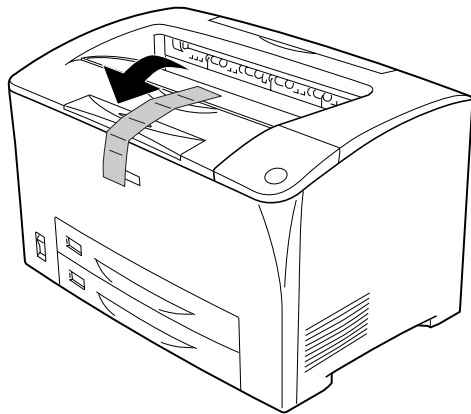


Cautions. must be observed to avoid damage to your equipment.

Notes contain important information and useful tips on the operation of your printer.

1 Assembling the Printer

Removing the Protective Materials



Finding a Place for the Printer

Allow adequate space for easy operation and maintenance. The illustration shows the recommended amount of space.

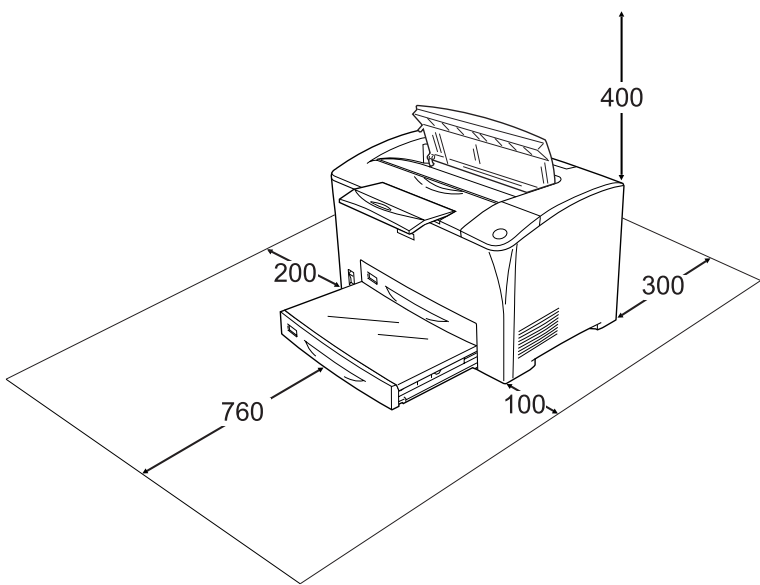
- Place the printer where you can easily unplug the power cord.
- Keep the entire computer and printer system away from potential sources of interference, such as loudspeakers or the base units of cordless telephones.



Caution:

- Avoid locations that are subject to direct sunlight, excessive heat, moisture, or dust.
- Do not place the printer on a surface that is smaller than the printer's bottom panel. Doing so may cause troubles on printing and feeding due to the internal excessive load of the printer. Be sure to locate the printer on a flat, wide surface where the rubber pads can be placed stably.

Dimensions shown in the illustration below are in millimeters



Installing the Imaging Cartridge

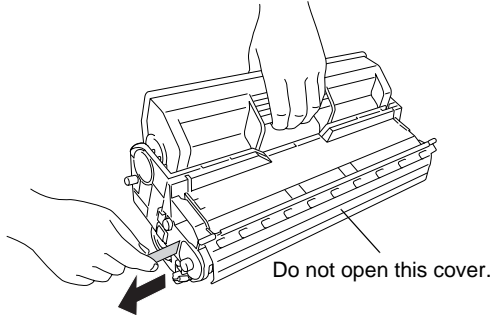
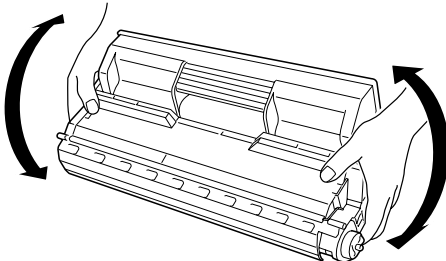


Caution:

- When handling the imaging cartridge, always place them on a clean smooth surface.
- If toner gets onto your skin or clothes, wash it off with soap and water immediately.
- Wait for at least one hour before installing an imaging cartridge after moving it from a cool to a warm environment to prevent damage from condensation.
- Do not turn the imaging cartridge upside down or stand it on its ends.
- Do not open the drum's protective cover and avoid exposing the imaging cartridge to room light any longer than necessary. Overexposing the cartridge may cause abnormally dark or light areas to appear on the printed page and reduce the life of the cartridge.

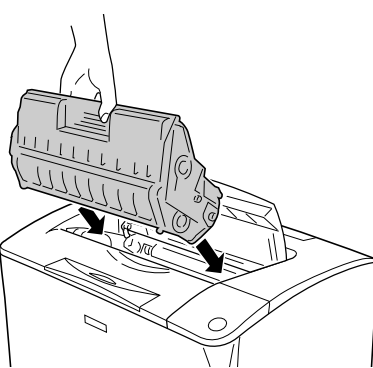
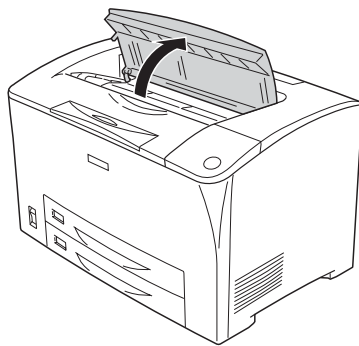
- 1 Gently shake the imaging cartridge a few times.

- 2 Pull the yellow tape seal all the way out and remove it.

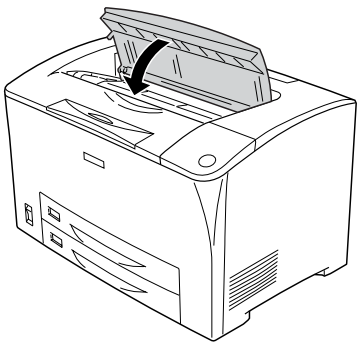


- 3 Open cover A.

- 4 Insert the cartridge firmly.



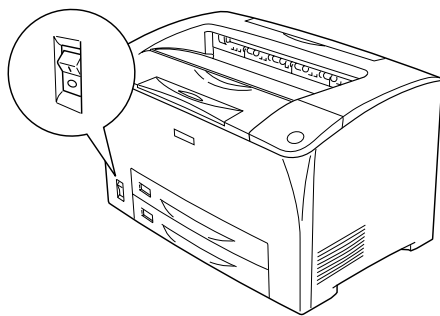
- 5 Close cover A.



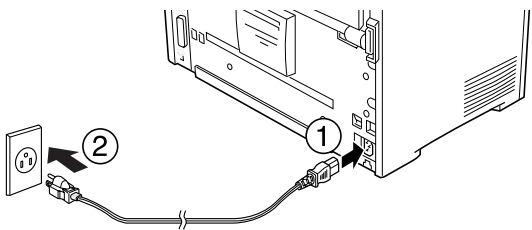
2 Testing and Connecting the Printer

Plugging in the Printer

- 1 Make sure the printer is turned off.

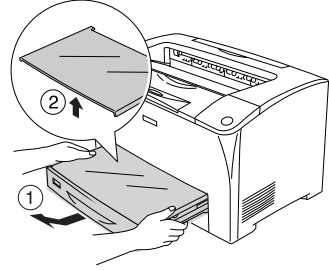


- 2 Insert the power cord into the back of the printer. Then plug the other end into an electrical outlet.

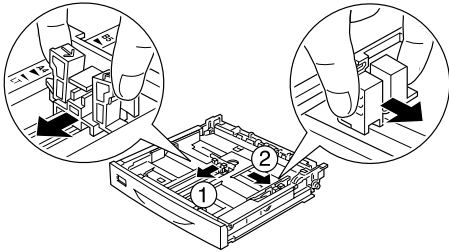


Loading Paper

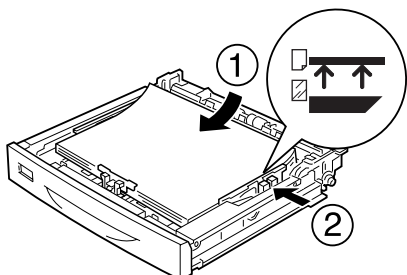
- 1 Remove the MP tray from the printer and remove the MP tray cover.



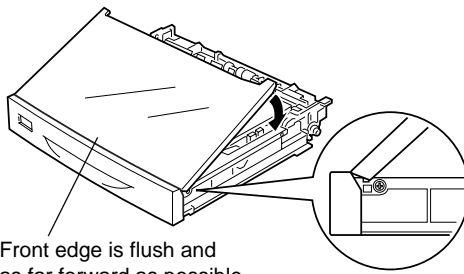
- 2 Slide the paper guides outwards as shown below.



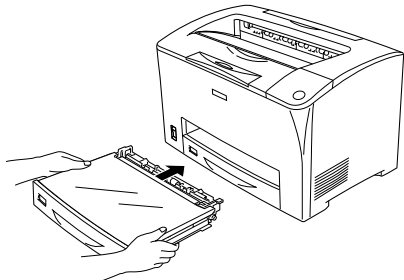
- 3 Set A4 or Letter paper into the tray with the printable side facing up as shown below.



- 4 Replace the tray cover.



- 5 Insert the MP tray into the printer.



Note:

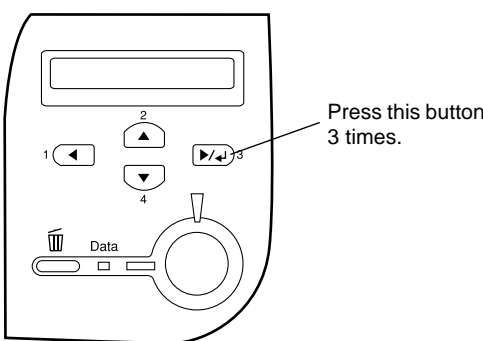
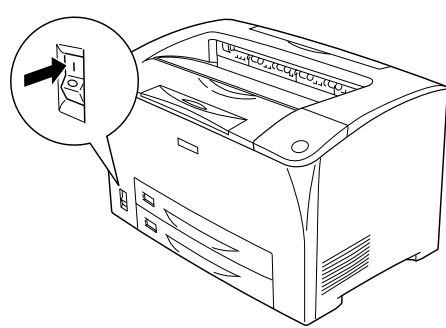
To load other paper sizes, see "Paper Handling" in the Reference Guide in the CD-ROM.

Testing the Printer

To confirm the current status of the printer, print a status sheet. The status sheet contains information about the printer, the consumable, the current settings, and the installed options, if any.

- 1 Turn on the printer. Wait until Ready appears on the LCD panel.

- 2 Press the button shown in the figure below.

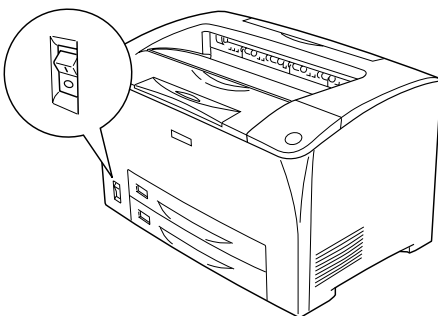


If a status sheet cannot be printed, see "Problem Solver" in the Reference Guide in the CD-ROM.

Connecting the Printer to a Computer

Use a shielded, USB Revision 1.1 cable, or twisted-pair parallel interface cable that is IEEE-1284 compatible.

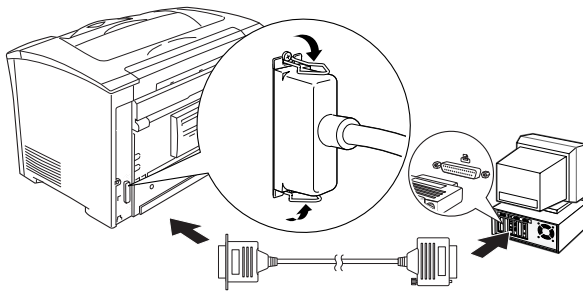
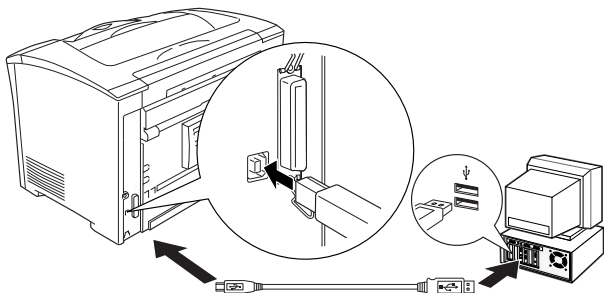
- 1 Make sure that both the printer and the computer are off.



- 2 Attach the USB or parallel interface cable to the printer. Plug the other end of the cable into the computer's USB or parallel interface connector.

For USB interface users

For parallel interface users



3 Installing the Printer Software

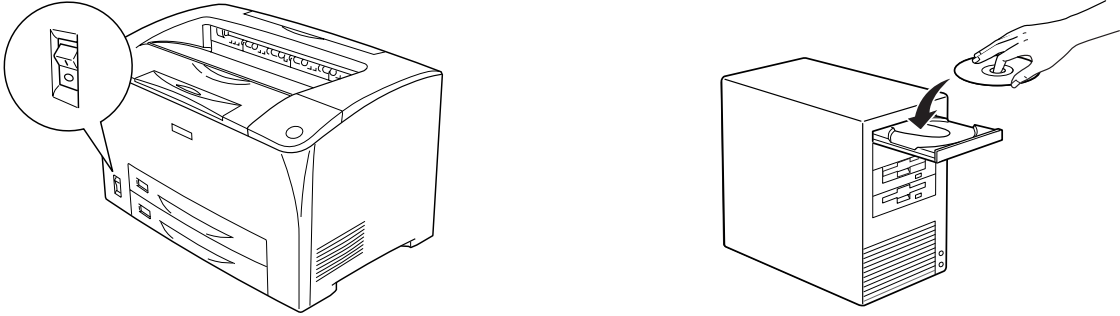
Printer driver

The printer driver gives you complete control settings over your printer with the Microsoft Windows Me, 98, 95, XP, 2000, and NT® 4.0. With it, you can make various settings such as print quality and paper size.

EPSON Status Monitor 3

EPSON Status Monitor 3 allows you to view printer status information such as the amount of toner remaining and check for any printer errors with the Microsoft Windows Me, 98, 95, XP, 2000, and NT® 4.0.

- 1 Make sure that your printer is turned off.
- 2 Insert the printer software CD-ROM in the CD-ROM drive.



- 3 Select **Install Software**, and click . Then follow the on-screen instructions.



Note:
If the EPSON Installation Program screen does not appear automatically, double-click the My Computer icon, right-click the CD-ROM icon, and click OPEN in the menu that appears. Then double-click Setup.exe.

About an Additional Driver

When the printer is shared with some computers (clients) in a network and the print server's OS is Windows XP, 2000 or NT 4.0, you can install the printer driver for the client's OS in the server as an additional driver. This allows the clients to download the appropriate printer driver from the printer server if necessary. See "Setting Up Your Printer on a Network" in the *Reference Guide* in the CD-ROM for details.

About printer sharing

You can use a printer connected to a local computers over a network. See "Setting Up Your Printer on a Network" in the *Reference Guide* in the CD-ROM for details.

4 Installing the Options

For specifications and handling precautions, see the *Reference Guide* in the CD-ROM.

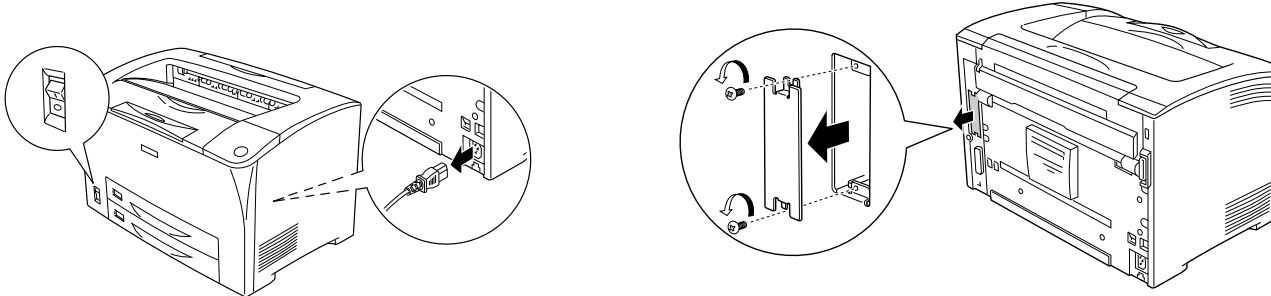
To install the optional 550-Sheet Universal Paper Cassette Unit, Duplex Unit and Single-Sheet Tray, see the instructions that come with the packages.

- Warning:**
☐ Removing screws and covers that are not described in the following instructions will expose high voltage areas.
☐ Be careful when working inside the printer as some components are sharp and may cause injury.

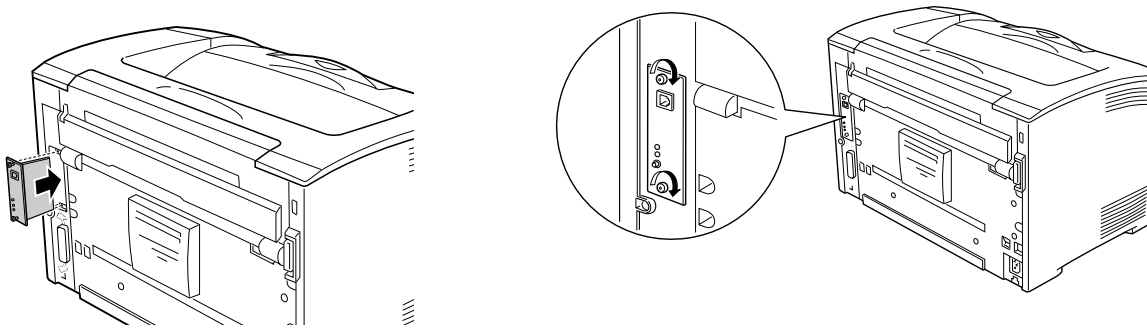
- Caution:**
Before you install a interface card or memory module, be sure to discharge any static electricity by touching a grounded piece of metal. Otherwise, you may damage static-sensitive components.

Interface Cards

- 1 Make sure the printer is turned off and unplug the power code.
- 2 Remove the two screws and remove the cover.



- 3 Insert the interface card firmly.
- 4 Secure the interface card with the two screws.

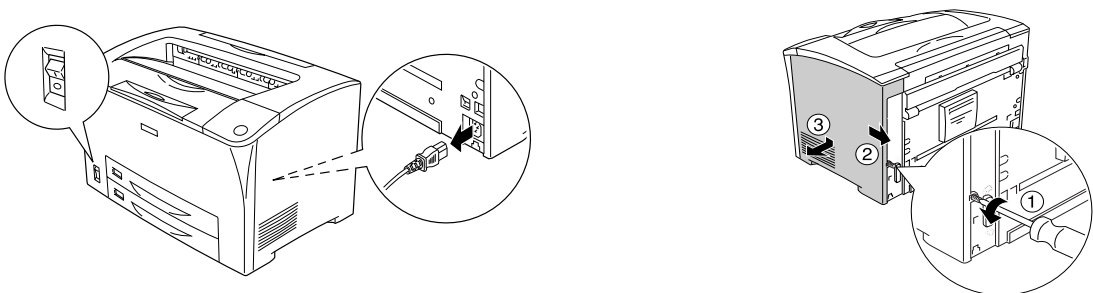


To confirm that the optional interface card is installed correctly, print a status sheet. See "2 Testing and Connecting the Printer".

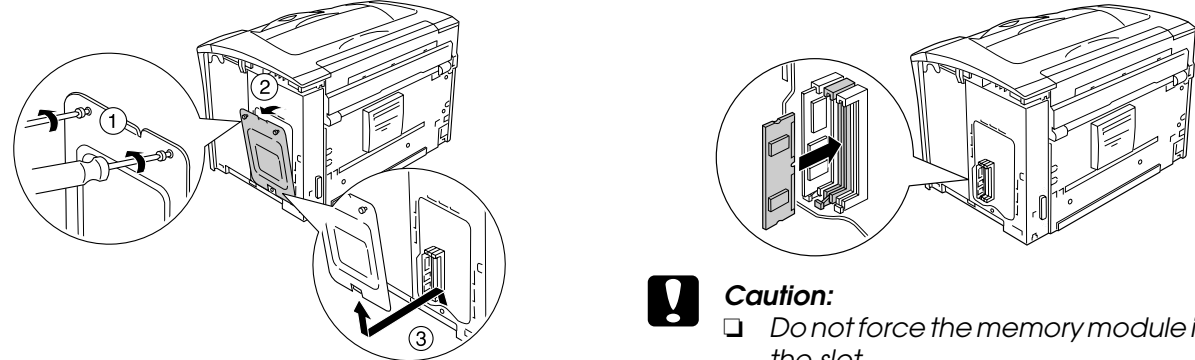
Memory Module

You can increase printer memory up to 144 MB (printer standard 16 MB plus optional 16, 32, 64, 128 MB).

- 1 Make sure the printer is turned off and unplug the power code.
- 2 Remove the printer's right side cover.

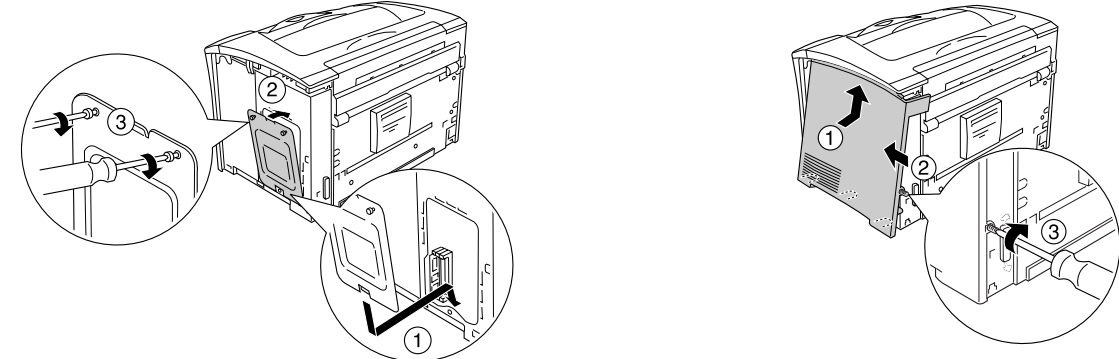


- 3 Loosen the screws, then remove the shield cover.
- 4 Insert the memory module into the RAM slot.



- Caution:**
☐ Do not force the memory module into the slot.
☐ Do not remove any modules from the circuit board. Otherwise, the printer will not work.

- 5 Replace the shield cover, then secure it with its screws.
- 6 Replace the printer's right side cover.



- Warning:**
Tighten the screw firmly to prevent the printer's right side cover from falling off when moving the printer.

To confirm that the memory module is installed correctly, print a status sheet. See "2 Testing and Connecting the Printer".

Getting More Information

The CD-ROM shipped with your printer includes the online User Guides as well as the printer software. Microsoft Internet Explorer 4.0 or later, or Netscape Navigator 4.0 or later must be installed in your computer to read the *Reference Guide*. Adobe® Acrobat Reader® 4.0 or later must be installed in your computer to open and read the *Quick Reference guide*.

To open the online Users Guides, see the instructions below.

- 1 Insert the printer software CD-ROM in the CD-ROM drive.
- 2 Select **User Guides**, and click .
- 3 The following screen appears.



View Reference Guide

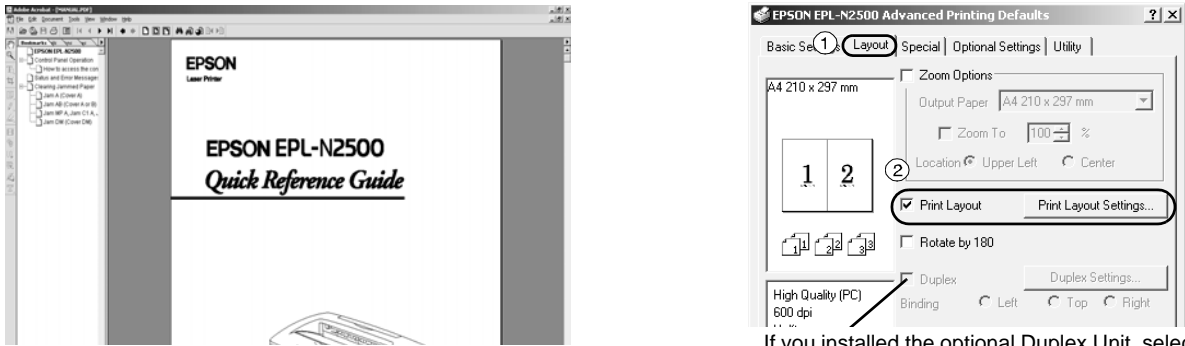
Select **View Reference Guide** in the EPSON User Guides screen. This guide provides you with detailed information on the printer's functions, optional products, maintenance, troubleshooting, and technical specifications.

View Quick Reference

Select **View Quick Reference** in the EPSON User Guides screen. This guide provides you with solutions for paper jam problems that you may need to refer to on a regular basis. We recommend printing this guide and keeping it near the printer.

Printing the Quick Reference guide

- 1 Select **View Quick Reference**. The Quick Reference guide opens Acrobat Reader.
- 2 Choose **Print** on the File menu. Then click **Properties** and select the Layout tab. Select the Print Layout check box.



- 3 Click **OK** to close the window. Then click **OK**. The *Quick Reference guide* is printed.