

# EPL-6200/EPL-6200L

## Setup

4044766-00  
F04

### Warnings, Cautions and Notes



**Warnings** must be followed carefully to avoid bodily injury.



**Cautions** must be observed to avoid damage to your equipment.

**Notes** contain important information and useful tips on the operation of your printer.

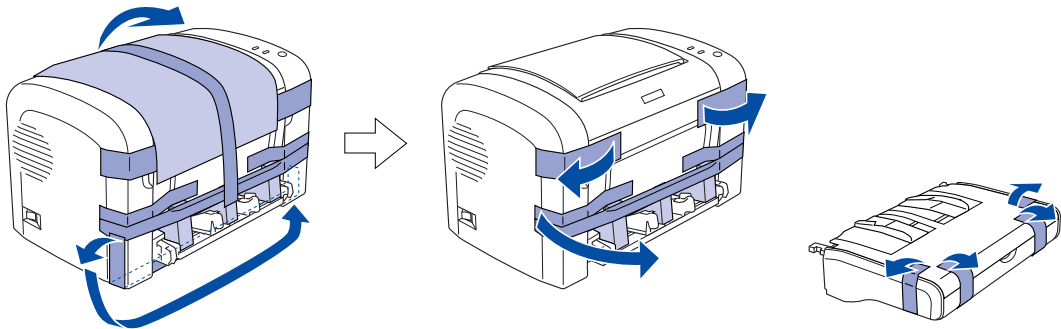
#### Note:

- ❑ The illustrations used in this document show the EPL-6200 model. Specific illustrations of the EPL-6200L model are provided only when the differences between the two models result in different handling of the product during the setup process.
- ❑ The printer is shipped with the developer cartridge and the photoconductor unit preinstalled.

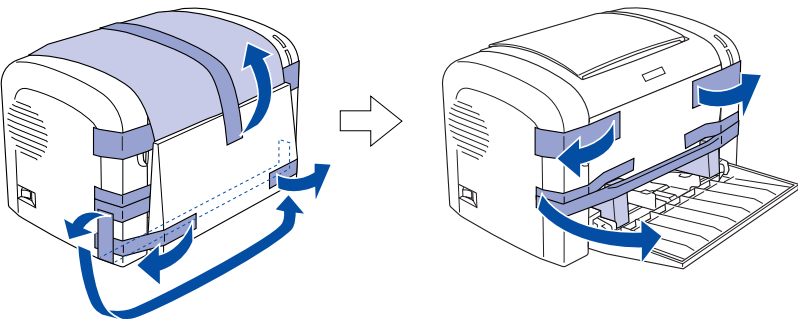
## 1 Assembling the Printer

### Removing the Protective Materials

EPL-6200



EPL-6200L



### Finding a Place for the Printer

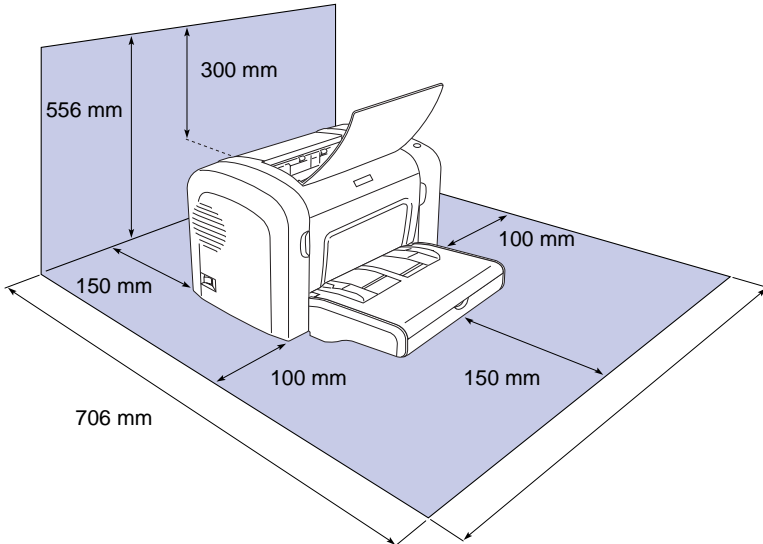
Allow adequate space for easy operation and maintenance. The illustration shows the recommended amount of space.

- ❑ Place the printer where you can easily unplug the power cord.
- ❑ Keep the entire computer and printer system away from potential sources of interference, such as loudspeakers or the base units of cordless telephones.



#### Caution:

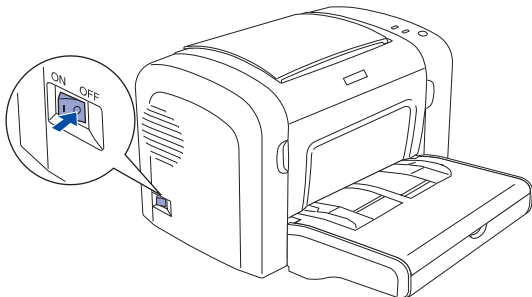
- ❑ Avoid locations that are subject to direct sunlight, excessive heat, moisture, or dust.
- ❑ Do not place the printer on a surface that is smaller than the printer's bottom panel. Doing so may cause printing and feeding problems due to the internal load of the printer. Be sure to locate the printer on a flat, wide surface where the rubber pads can be placed stably.



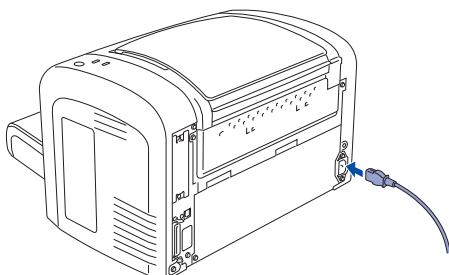
## 2 Testing and Connecting the Printer

### Plugging in the Printer

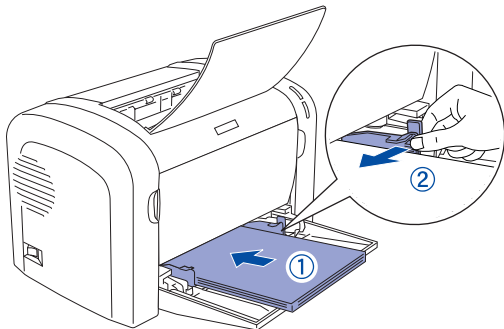
- 1 Make sure the printer is turned off.



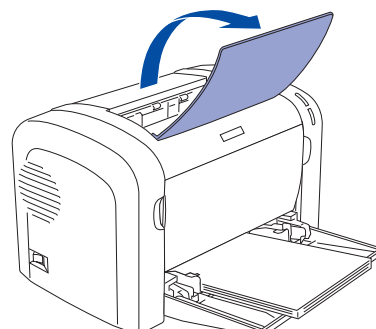
- 2 Insert the power cord into the back of the printer. Then plug the other end into an electrical outlet.



- 3 Set A4 or Letter paper into the tray with the printable side facing up, and then slide the paper guide inwards to match the size of the paper.

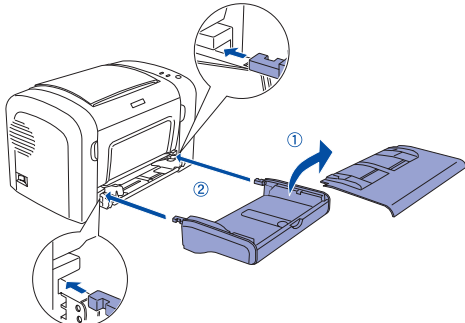


- 4 Lift up the output tray.

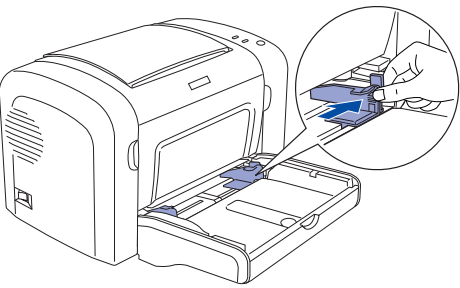


### Loading Paper (EPL-6200)

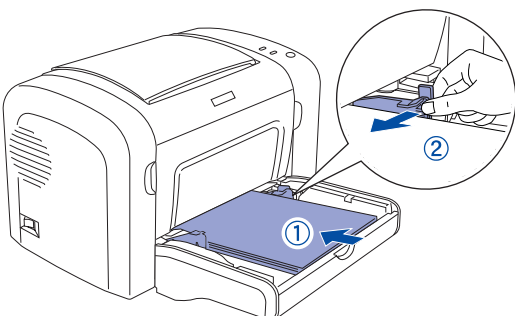
- 1 Remove the MP tray cover, and then carefully insert the tray into the printer until it clicks into place.



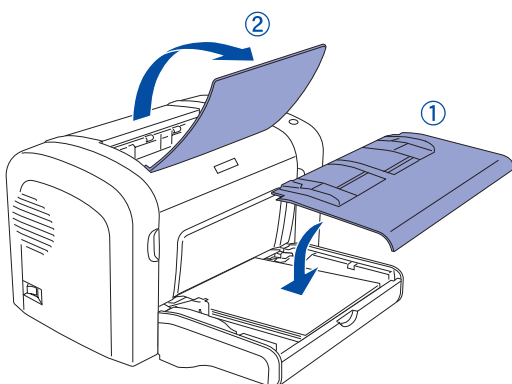
- 2 Pinch the paper guide tab to release the guide lock, then slide the paper guide outwards as shown below.



- 3 Set A4 or Letter paper into the tray with the printable side facing up, and then slide the paper guide inwards to match the size of the paper.



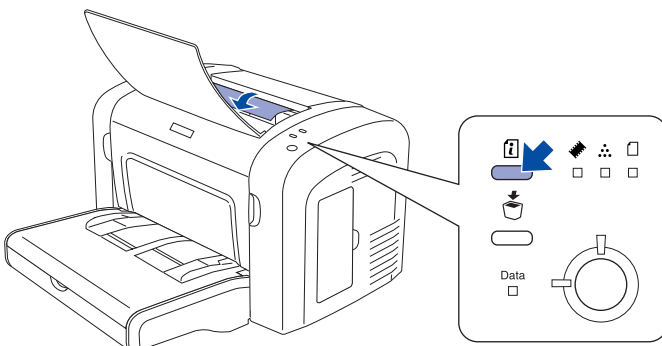
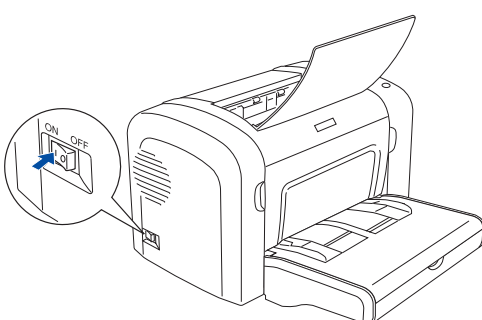
- 4 Replace the MP tray cover, and then lift up the output tray.



### Testing the Printer (EPL-6200 only)

To confirm the current status of the printer, print a status sheet. The status sheet contains information about the printer, the consumables, the current settings, and the installed options, if any.

- 1 Turn on the printer. Wait until the Ready light turns green.
- 2 Press the button shown in the figure below.

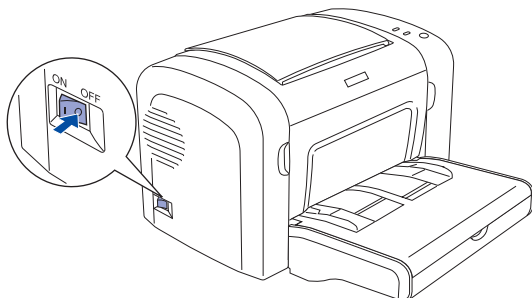


If a status sheet cannot be printed, see "Problem Solver" in the *Reference Guide*. For information on how to access the online *Reference Guide*, see "Getting More Information" below.

### Connecting the Printer to a Computer

Use a shielded, USB Revision 1.1 cable, or twisted-pair parallel interface cable that is IEEE-1284 compatible.

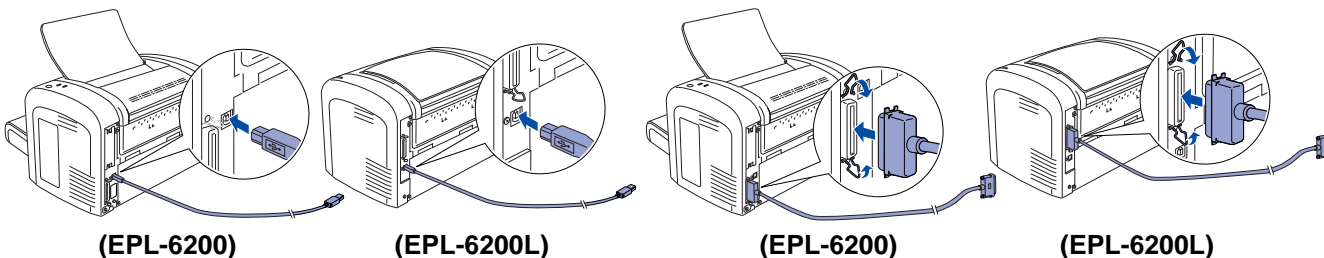
- 1 Make sure that both the printer and the computer are off.



- 2 Attach the USB or parallel interface cable to the printer. Plug the other end of the cable into the computer's USB or parallel interface connector.

For USB interface users

For parallel interface users





# 3 Installing the Printer Software

When you install the printer software, the following components are installed:

## Printer driver

The printer driver gives you complete control over your printer settings when using Microsoft® Windows® XP, 2000, Me, 98, 95, NT® 4.0 (except Terminal Server edition), Mac OS® 8.6 to 9.x, and Mac OS® X. With it, you can make settings such as print quality and paper size.

## EPSON Status Monitor 3 (Windows only)

EPSON Status Monitor 3 allows you to view printer status information such as the amount of toner remaining and check for any printer errors with Microsoft Windows XP, 2000, Me, 98, 95, and NT 4.0.

## Reference Guide

The online *Reference Guide* is automatically installed together with the printer driver and can be accessed from your computer's desktop.

### Note:

The PostScript printer driver is required to print PostScript files with the EPL-6200. The installer on the CD-ROM that shipped with your printer does not automatically install the PostScript printer driver together with the non-PostScript printer driver and other printer software. To install the PostScript printer driver, see "Installing the PostScript printer driver (EPL-6200 only)" in the *Reference Guide*.

## For Windows

- 1

Make sure that your printer is turned off.
- 2

Insert the printer software CD-ROM into the CD-ROM drive.
- Note:

☐

If the language selection window appears, select your country.

☐

If the EPSON Installation Program screen does not appear automatically, double-click the My Computer icon, right-click the CD-ROM icon, and click OPEN in the menu that appears. Then double-click Setup.exe.
- 3

Click **Continue**. When the software license agreement screen appears, read the statement and then click **Agree**.
- 4

In the dialog box that appears, click **Install**. The follow the on-screen instructions.

## About an Additional Driver

When the printer is shared with some computers (clients) in a network and the print server's OS is Windows XP, 2000 or NT 4.0, you can install the printer driver for the client's OS in the server as an additional driver. This allows the clients to download the appropriate printer driver from the printer server, if necessary. See "Setting Up Your Printer on a Network" in the *Reference Guide* on the CD-ROM for details.

### Note:

To ensure proper operation, a computer name must be entered into your computer's settings. If your printer is shared, the computer name must be unique to your computer.

## About printer sharing

You can use a printer connected to a local computer over a network. See "Setting Up Your Printer on a Network" in the *Reference Guide*.

## For Mac OS 8.6 to 9.x

- 1

Make sure that your printer is turned off.
- 2

Insert the printer software CD-ROM into the CD-ROM drive.
- Note:

If the language selection window appears, select your country.
- 3

Double-click the **EPSON** icon.
- 4

Click **Continue**. When the software license agreement screen appears, read the statement and then click **Agree**.
- 5

In the dialog box that appears, click **Install**. The follow the on-screen instructions.

## Selecting your printer in the Chooser (Mac OS 8.6 to 9.x only)

After you have installed the printer driver, you need to open the Chooser to select your printer. This procedure is necessary the first time you use a printer and when you want to switch to another printer. Your Macintosh will always print using the last printer selected.


## For Mac OS X

- 1

Make sure that your printer is turned off.
- 2

Insert the printer software CD-ROM into the CD-ROM drive.
- Note:




If the language selection window appears, select your country.
- 3

Open the  Mac OS X folder, then double-click the EPSON icon.
- 4

Click **Continue**. When the software license agreement screen appears, read the statement and then click **Agree**.
- 5

In the dialog box that appears, click **Install**. The follow the on-screen instructions.
- Note:

If the Authorization dialog box appears, enter the Password or phrase, then click **OK**.
- 7

Open the  Applications folder on your hard drive, then open the  Utilities folder and double-click the  Print Center icon. Click **Add Printer** in the Printer List dialog box.
- 9

Close the Print Center.
- 6

After installing the software and restarting the computer, press the power button to turn on the printer.
- 8

Select **EPSON USB** from the pop-up menu. Select your printer name in the Product list, then select **All** from the Page Setup pop-up menu. Then, click **Add**.

## About printer sharing

You can use a printer connected to a local computer over a network. See "Setting Up Your Printer on a Network" in the *Reference Guide*.

# 4 Installing the Options (EPL-6200 only)

For specifications and handling precautions, see the *Reference Guide* on the CD-ROM.

To install the optional 500-Sheet Lower Paper Cassette Unit A4 and Duplex Unit, see the instructions that came with the packages.

- Warning:

☐

Removing screws and covers that are not described in the following instructions will expose high voltage areas.

☐

Be careful when working inside the printer as some components are sharp and may cause injury.
- Caution:

Before you install an interface card or memory module, be sure to discharge any static electricity by touching a grounded piece of metal. Otherwise, you may damage static-sensitive components.

## Interface Cards

- 1

Make sure the printer is turned off and unplug the power cord and interface cables.
- 2

Remove the two screws and then remove the cover.
- 3

Insert the interface card firmly, and then secure it with the two screws.
- To confirm that the optional interface card is installed correctly, print a status sheet. See "2 Testing and Connecting the Printer."

## Memory Module

You can increase printer memory up to 136 MB (printer standard 8 MB plus optional 16, 32, 64, 128 MB).

- 1

Make sure the printer is turned off and unplug the power cord and interface cables.
- 2

Remove the memory slot cover on the right side of the printer.
- 3

Insert the memory module into the RAM slot.
- 4

Replace the memory slot cover as shown below.
- Caution:

☐

Do not force the memory module into the slot.

☐

Do not remove any modules from the circuit board. Otherwise, the printer will not work.

To confirm that the memory module is installed correctly, print a status sheet. See "2 Testing and Connecting the Printer."

# Getting More Information

A Reference Guide icon is created on the desktop when the printer software is installed. To view the guide, double-click the **EPL6200/EPL6200L Reference Guide** icon on the desktop. In Windows, you can also access the Reference Guide via the Start menu. To do so, click **Start**, point to **All programs** in Windows XP or **Programs** in Windows 2000, Me, 98, 95, or NT 4.0, point to **EPSON**, and then select **EPL6200/EPL6200L Reference Guide**.

All rights reserved. No part of this publication may be reproduced, stored in a retrieval system, or transmitted in any form or by any means, electronic, mechanical, photocopying, recording, or otherwise, without the prior written permission of SEIKO EPSON CORPORATION. No patent liability is assumed with respect to use of the information contained herein. Neither is any liability assumed for damages resulting from the use of the information contained herein. Neither SEIKO EPSON CORPORATION nor its affiliates shall be liable to the purchaser of this product or third parties for damages, losses, costs, or expenses incurred by the purchaser or third parties as a result of: accident, misuse, or abuse of this product or unauthorized modifications, repairs, or alterations to this product, or (excluding the U.S.) failure to strictly comply with SEIKO EPSON CORPORATION's operating and maintenance instructions. SEIKO EPSON CORPORATION and its affiliates shall not be liable against any damages or problems arising from the use of any options or any consumable products other than those designated as Original EPSON Products or EPSON Approved Products by SEIKO EPSON CORPORATION. EPSON is a registered trademark of SEIKO EPSON CORPORATION. Microsoft, Windows, and Windows NT are registered trademarks of Microsoft Corporation in the United States and/or other countries. Apple and Macintosh are registered trademarks of Apple Computer, Inc. Adobe and PostScript are trademarks of Adobe System Incorporated, which may be registered in certain jurisdictions. The PCL6 compatible interpreter is a customized version of IPS-PRINT SIX © developed by Xionics Document Technologies, Inc., a subsidiary of Oak Technology, Inc. **General Notice:** Other product names used herein are for identification purposes only and may be trademarks of their respective owners. EPSON disclaims any and all rights in those marks.