

# EPSON

## EPSON STYLUS™ CX6500

# Setup

4049504-00  
XXX

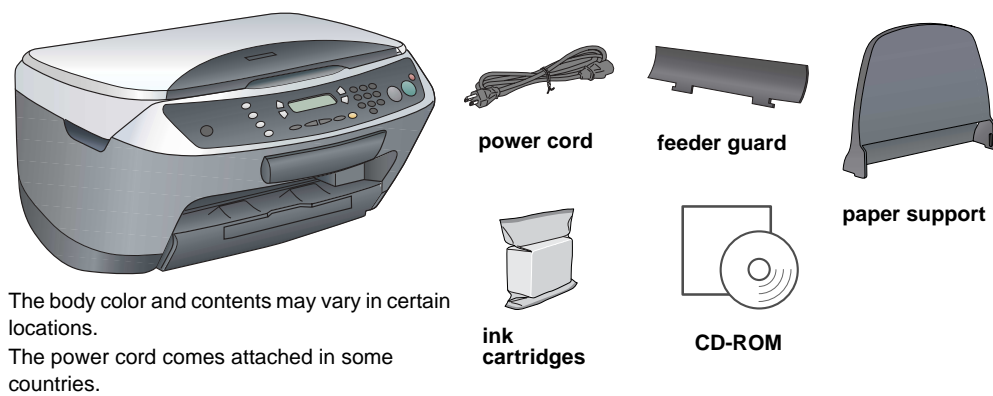
### Cautions and Notes

**!** **Cautions** must be observed to avoid damage to your equipment.

**Notes** contain important information and useful tips on the operation of this product.

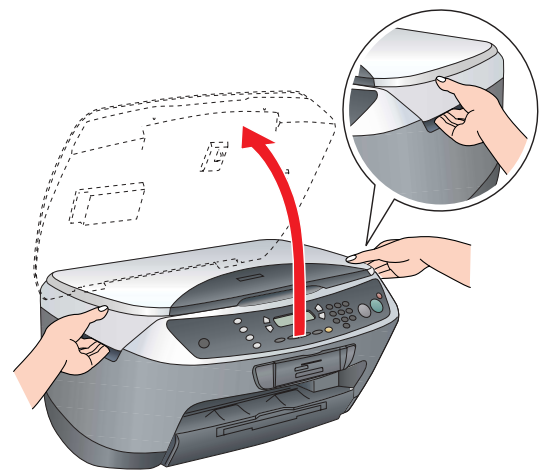
## 1 Unpacking

Make sure the following parts are included and not damaged.

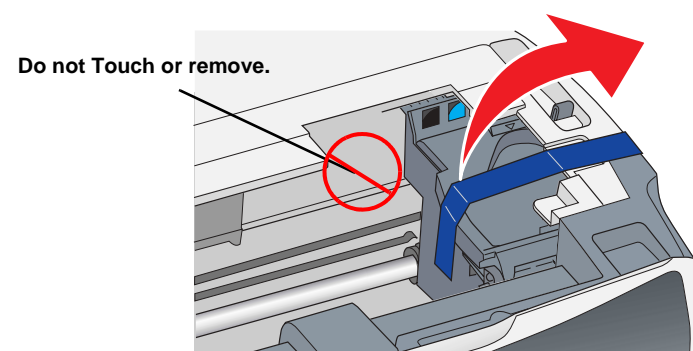


## 2 Removing the Tapes

1. Open the scanner unit.

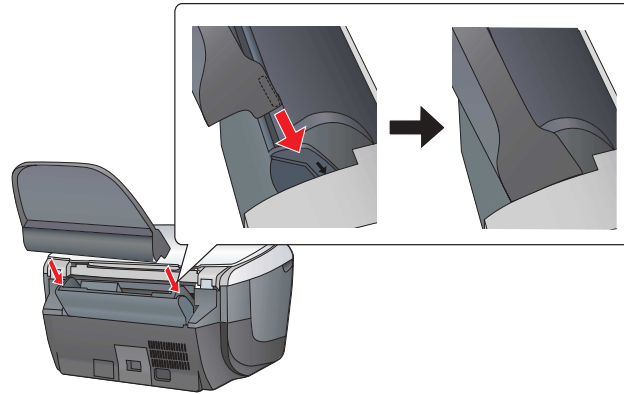


2. Remove all tape and packing material from this product. Make sure the protective materials around the ink cartridges are removed.

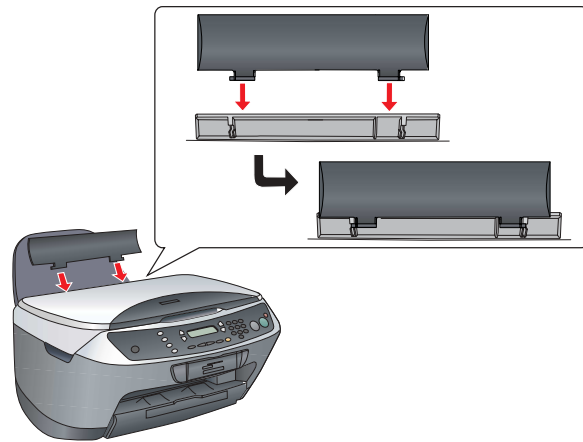


## 3 Attaching the Parts

1. Attach the paper support.



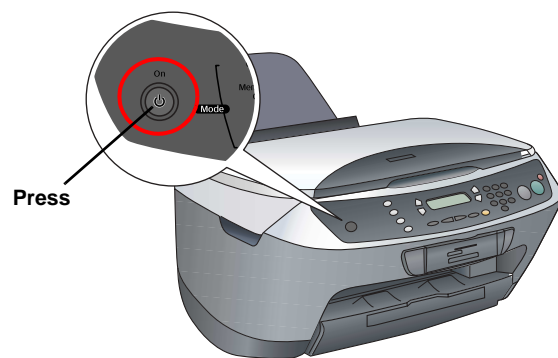
2. Insert the feeder guard into two slots in front of the paper support.



**Note:**  
The feeder guard prevents items put on the document cover from getting into the inside of this product.

## 4 Turning On

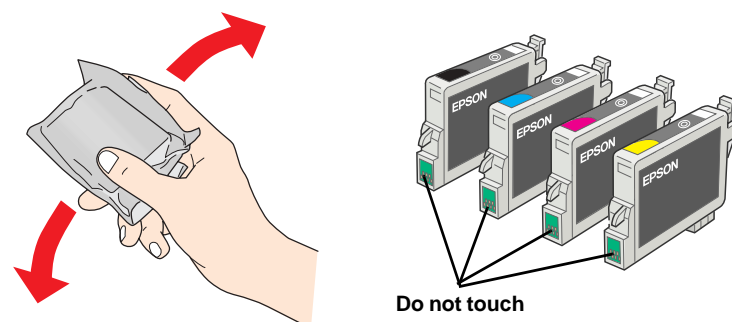
Plug in the power cord and press the On button to turn on this product.



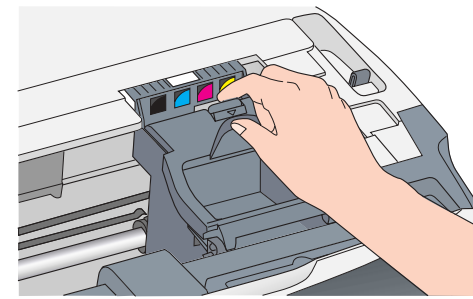
**Note:**  
Do not connect it to your computer before step 9 or you will fail to install the software.

## 5 Installing Ink Cartridges

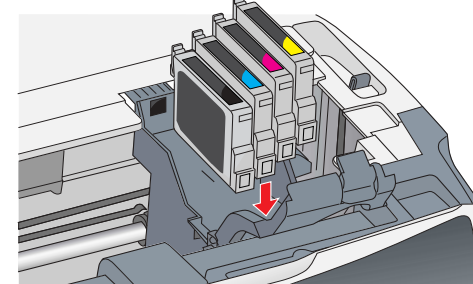
1. Open the scanner unit.
2. Shake an ink cartridge four or five times and then remove it from its package.



3. Open the cartridge cover.

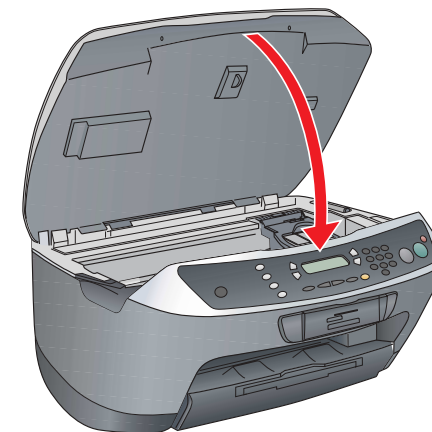


4. Place each cartridge into its holder. Then, push the ink cartridge down until it clicks into place.



**Note:**  
Install all ink cartridges. This product does not work unless all cartridges are installed properly.

5. Close the cartridge cover.
6. Lower the scanner unit.



Ink charging starts and it takes about two minutes to complete.

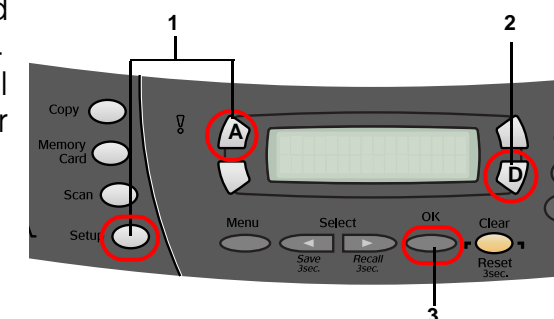
Initial charge... appears on the LCD panel and the Stylus CX produces a variety of mechanical sounds. This is normal.

**!** **Caution:**  
☐ Never turn off this product during the ink charging process.  
☐ Do not load paper until ink charging is complete.

## 6 Selecting a Language

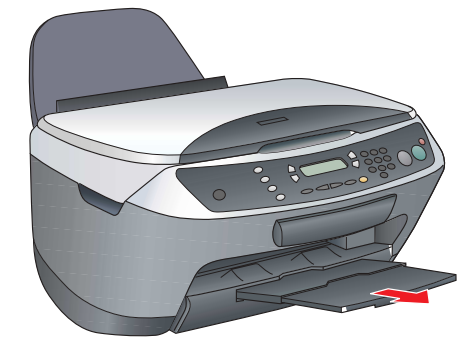
1. Press the Setup button and A button until 7 .Languages appears on the LCD panel and then press the Color button.
2. Select a language by pressing the D button.
3. Press the OK button.

Menu items appear in the selected language.

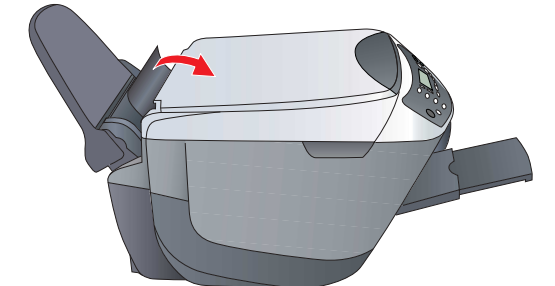


## 7 Loading Paper

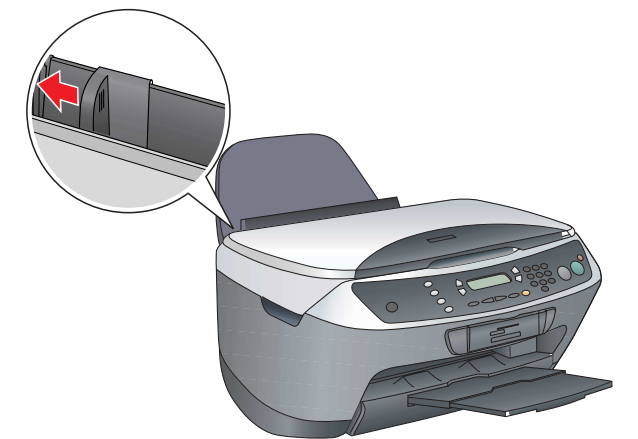
1. Slide out the output extension tray.



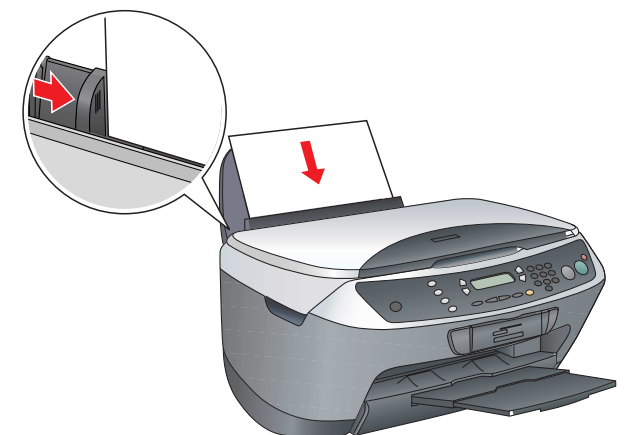
2. Move the feeder guard towards you.



3. Slide out the edge guide.



4. Load a stack of paper to rest against the right side of the feeder and slide the edge guide against the paper.

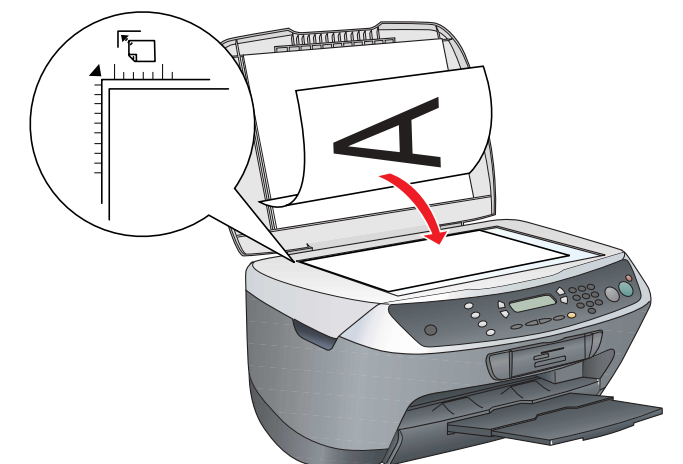


5. Move the feeder guard back.

**Now you are ready to use this product as a stand-alone device. See the next section to learn how to make a test copy. If you want to install software, see "Connecting to Your Computer" on the reverse side of this sheet.**

## 8 Making Copies

1. Place a document on the document table.





- Press the **Copy Mode** button to enter the Copy Mode.
- Press the numeric buttons to set the number of copies.

- Press the  $\diamond$  B&W button (to copy in grayscale), or the  $\diamond$  Color button (to copy in color).

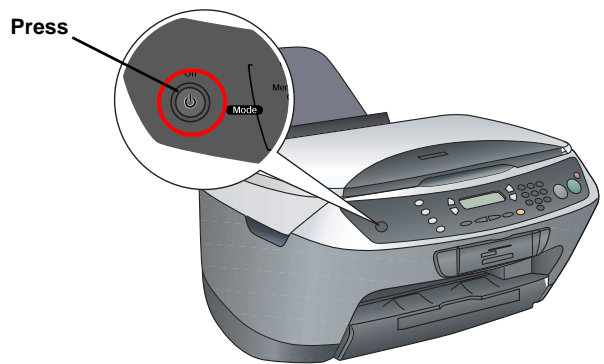
Stylus CX starts Copying.

**Caution:**  
Do not open the scanner unit during scanning or copying; otherwise, you may damage this product.

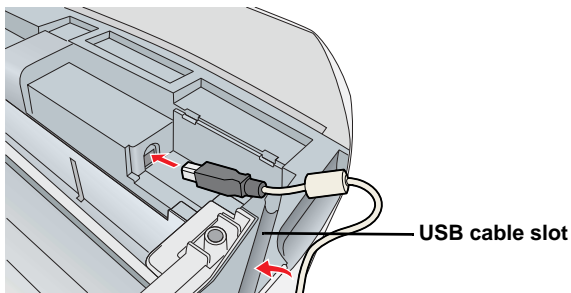
The Stylus CX has a variety of copy functions. See “Features” on this sheet or Basic Operation Guide. To use this product with your computer, see next step.

## 9 Connecting to your Computer

- Press the  $\odot$  On button to turn off the Stylus CX.

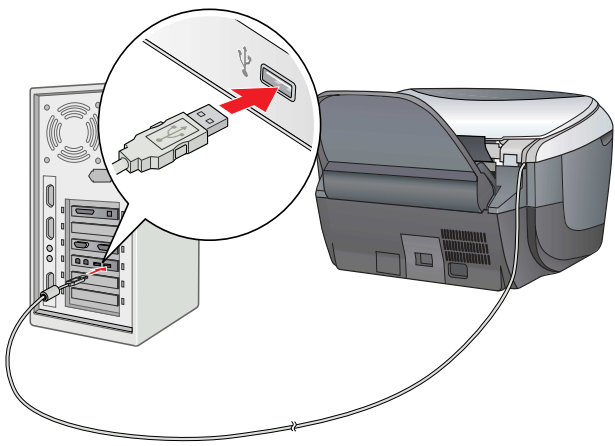


- Open the Scanner unit.
- Plug the connector of the USB cable into the USB port of this product, and then connect the cable to the slot.



**Caution:**  
Push the USB cable securely into the slot. The USB connector may snap if it is not securely in the slot and the scanner unit is closed with force.

- Close the scanner unit.
- Connect the other end of the USB cable to your computer.

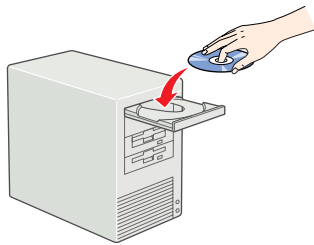


## 10 Installing the Software

**Note for Mac OS X:**  
This software does not support the UNIX File System (UFS) for Mac OS X. Install the software on a disk or in a partition that does not use UFS.

This product does not support the Mac OS X Classic environment.

- Make sure the Stylus CX is connected and turned off, and then insert the software CD.

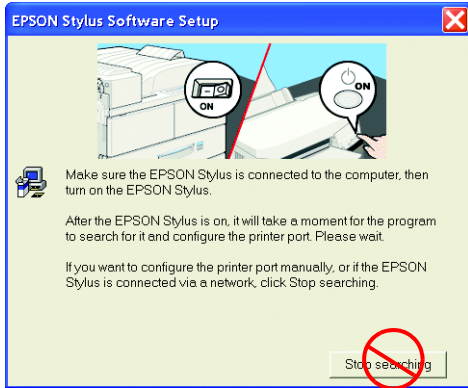


For Macintosh, double-click the Mac OS 9 icon or Mac OS X icon in the software CD.

- Turn off all virus protection programs and then click Continue.
- Read the license agreement. If you agree with the terms, click Agree.
- Click Install, and then follow the onscreen instructions.



- When you see this screen, turn on your Stylus CX and wait until the screen disappears. Then follow the onscreen instructions. Note that EPSON Smart Panel is installed in several steps.



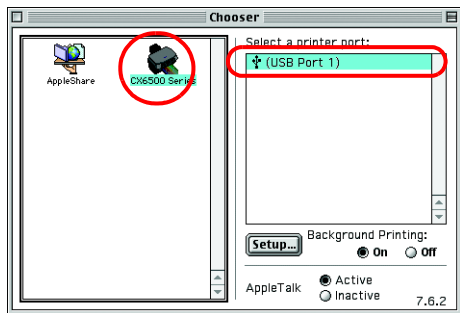
- Click Exit or Restart Now on the final screen, and then remove the CD-ROM.

For Windows users, you are ready to scan and print. See “Features” or “Getting More Information” on this sheet for instructions.

For Macintosh users, see the next section to set up the Stylus CX as a printer.

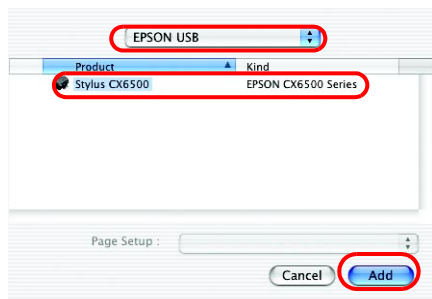
### For Mac OS 9

- Open Chooser from the Apple menu.
- Select CX6500 Series and your USB port, and then close Chooser.



### For Mac OS X

- Open the Applications folder on your hard drive, and then open the Utilities folder and double-click Print Center or Printer Setup Utility.
- Click Add in the Printer List dialog box.
- Select EPSON USB or USB, click Stylus CX6500, and then click Add.



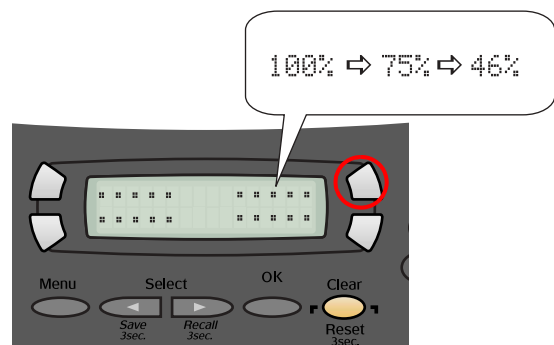
- Make sure Printer List contains Stylus CX6500 and then close this printer list.

Now you are ready to scan and print. See “Features” or “Getting More Information” on this sheet for instructions.

## Features

### Buttons around LCD Panel

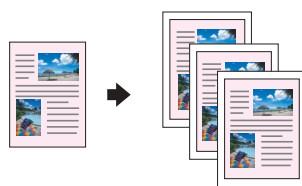
The four buttons around the LCD panel allow you to make settings quickly. Simply press the button next to a setting you want to change to move through the available options.



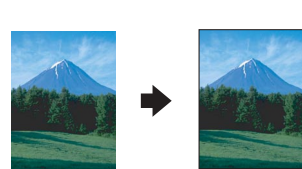
### Copying

You can copy with a variety of options.

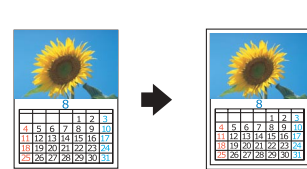
#### Standard



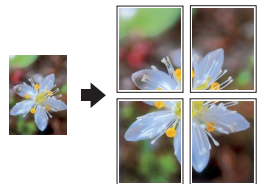
#### BorderFree



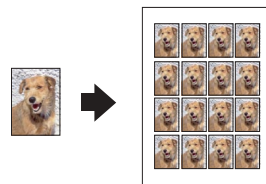
#### Small Margin



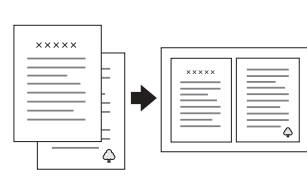
#### Poster



#### Repeat



#### 2-up



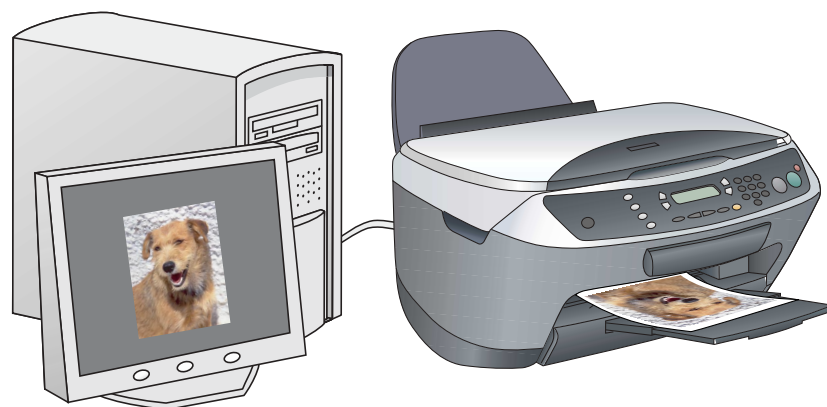
### Using a Memory Card

The built-in memory card slot allow you to do the followings:

- Print directly from a memory card. (See Basic Operation Guide.)
- Scan and save an image directly to a memory card. (See Basic Operation Guide.)
- Transfer the data stored on a memory card to your computer. (See Reference Guide.)

### Printing

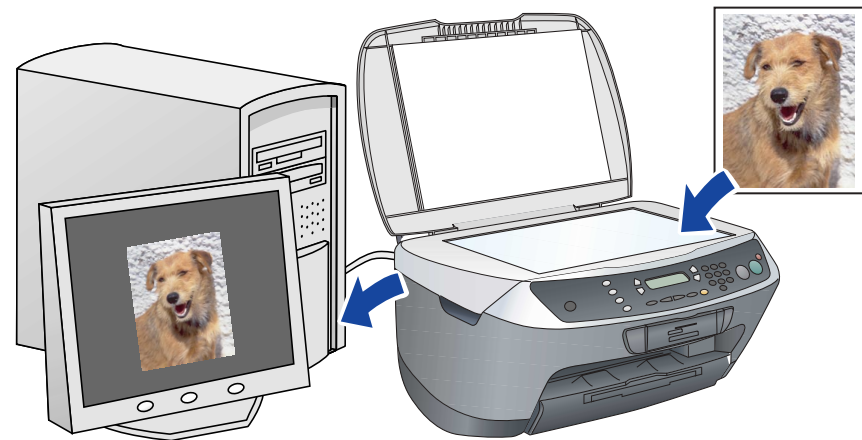
You can print data, and make photos, postcards, and posters from your computer.



To use this feature, you need to connect the Stylus CX to a computer with the Epson Printer software installed. See “Installing the Software” on this sheet to install the Epson printer driver.

## Scanning

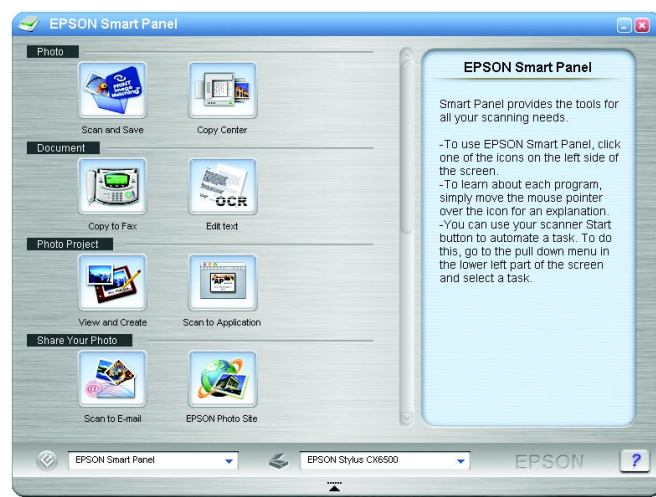
You can scan documents, photos and other materials into an electronic format for your computer, and then use the scanned images in greeting cards, e-mail, or on the web.



To use the scan features, you need to connect the Stylus CX to a computer with EPSON Scan and EPSON Smart Panel installed. See “Installing the Software” on this sheet to install EPSON Scan and EPSON Smart Panel.

### EPSON Smart Panel

It is the copy center of your Stylus CX when it is functioning as a scanner. Use it to copy, create an e-mail, scan, print, fax, or use OCR (Optical Character Recognition).



## Getting More Information

### Basic Operation Guide

Contents	Describes how to use the Stylus CX as a stand-alone device. You can copy, print directly from a memory card, and scan to a memory card. Also, you can change ink cartridges and check the condition of the Stylus CX. It also provides troubleshooting tips and customer support information.
----------	---

### Reference Guide

Contents	Provides basic information on printing and scanning. Maintenance and troubleshooting tips, technical and customer support information are also included.
How to access	Double - click the ESCX6500 Reference Guide icon on the desktop.

### Online Help

Contents	Provides you with detailed information on the printer driver and EPSON Scan.
How to access	See "Getting Information" on the Reference Guide.