

SL-D3000 Printer Driver Operation Guide

Contents

Installing the Printer Driver

System Requirements.	3
Supported Operating Systems.	3
Connection Configuration.	4
Operating Environment.	4
Installing the Printer Driver.	5

Printer Driver Functions

Main Screen.	8
Page Layout Screen.	10
Configuration Screen.	11

Basic Printing Methods

Printing from PhotoShop.	12
Canceling Printing.	17
Displaying the Printer Driver Help.	18
Displaying Help 1.	18
Displaying Help 2.	18

Printing Using the Printer Driver Functions

Color.	19
Color Settings.	19
Color Controls for Tone.	20
Color Management Using the Application (No Color Adjustment).	22
Color Management Using the Printer Driver (ICM).	23
Borderless Printing.	25
Setting Procedures.	25
Printing on Custom Paper.	27
Previewing an Image.	29
Saving Printer Driver Settings.	31
Setting Back Printing.	32

Configuration

Setting the Display Language and Units.	33
---	----

Problem Solver

When an Error Message is Displayed.	34
You cannot print (because the printer does not work).	34

The printer sounds like it is printing, but nothing prints.	36
The print outs are not what you expected.	36

Uninstalling the Printer Driver

Installing the Printer Driver

System Requirements

Supported Operating Systems

Install the printer driver on the Client PC that will perform printing.

The printer driver can be installed under the following operating systems.

Make sure that the Client PC meets the following conditions.

Operating system	Windows XP Professional (SP3)
	Windows 7 Professional (SP1) 32 and 64 bit versions
Installation user account	Log in as a user with an "Administrator account" (a user belonging to the Administrators group).

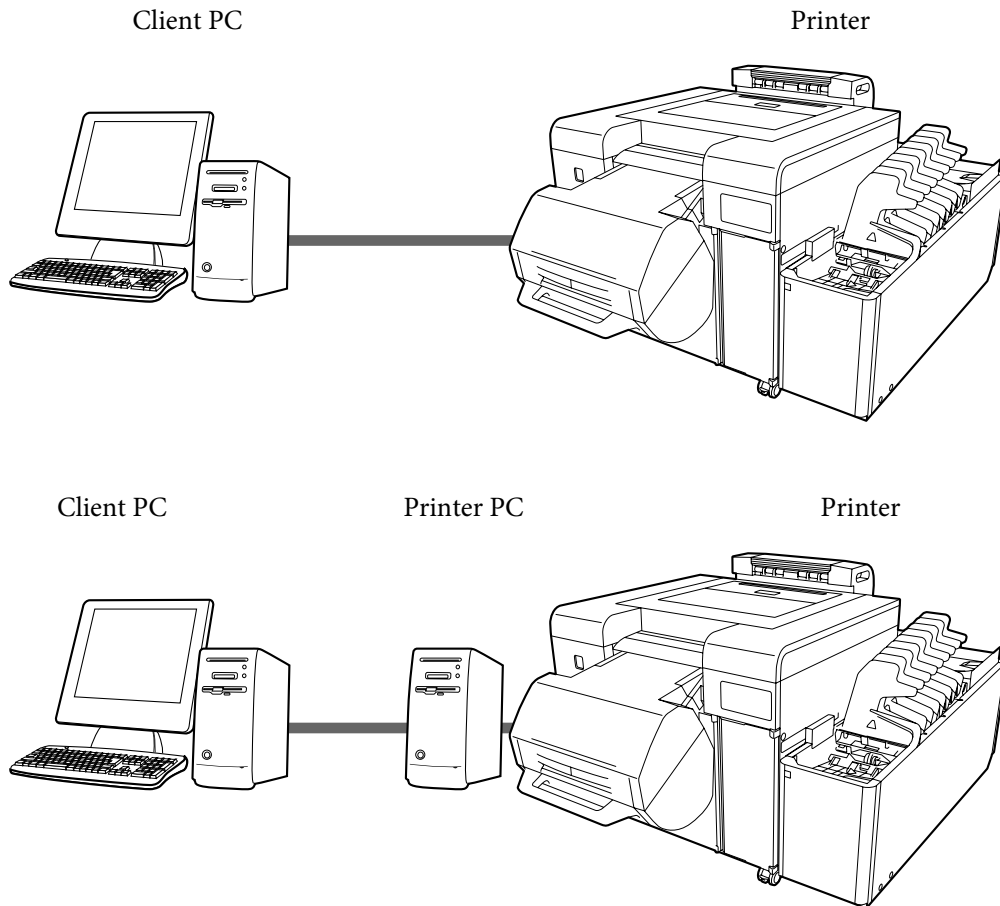
Note:

During installation, if a message is displayed informing you that an older version of the printer driver is already installed, follow the on-screen instructions to install the new printer driver.

Installing the Printer Driver

Connection Configuration

The Client PC can be connected directly to the printer, or it can be connected to the printer via a Printer PC.



In either situation, the printer driver should be installed on the Client PC.

When multiple Client PCs are connected, install the printer driver on each Client PC that will use the printer driver. Also, when multiple printers are connected, install the printer driver for each printer.

Operating Environment

Install the printer driver under operating environments that meet the following conditions.

- ☐ The printer's system application has been installed.
- ☐ The target printer has been added to the Printer List from the Maintenance Utility.
- ☐ The target printer has completed its Post-operation Check.

Note:

If the above requirements are not met, the printer driver may not be installed correctly, and problems could occur in the printer's system application.

See the "SL-D3000 Administrator's Guide" for more information on installing the printer's system application.

Installing the Printer Driver

Installing the Printer Driver

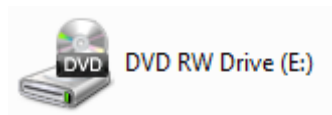
Note:

- ☐ Note the following points when installing.
 - ☐ Do not disconnect the USB cable or the LAN cable connecting the printer to the PC.
 - ☐ Do not turn off the printer or the PC.
 - ☐ The printer has completed its Post-operation Check.
- ☐ You must log in with an Administrator account.
- ☐ In Windows 7, if an Administrator password or confirmation is requested, enter the password and then continue with the operation.

1 Load the software CD-ROM into the Client PC.

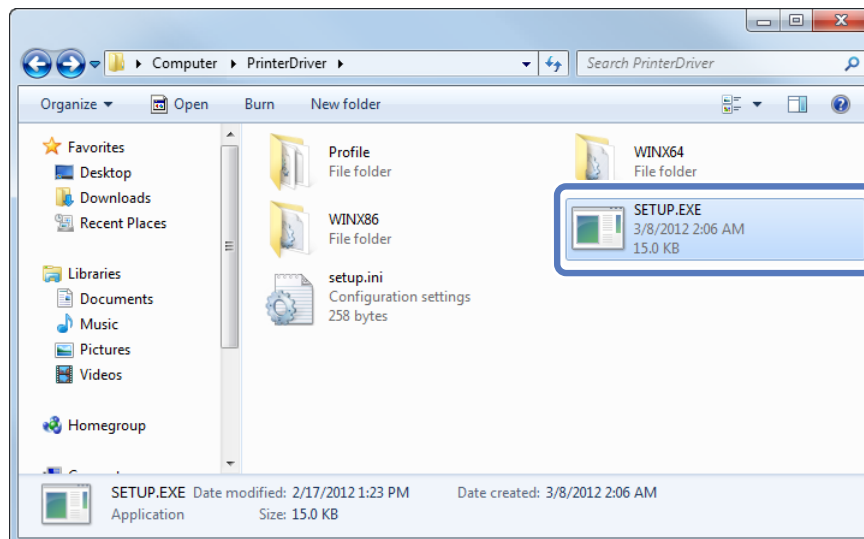
2 Open the CD-ROM folder.

Double-click the CD-ROM icon in **My Computer** (or **Computer**).



3 Double-click "Setup.exe" in the "Printer Driver" folder.

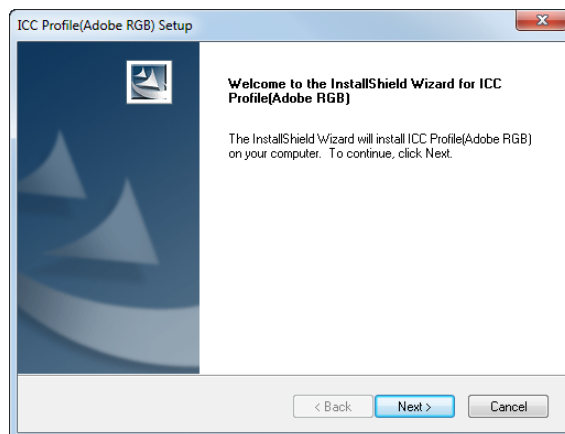
The Setup screen is displayed.



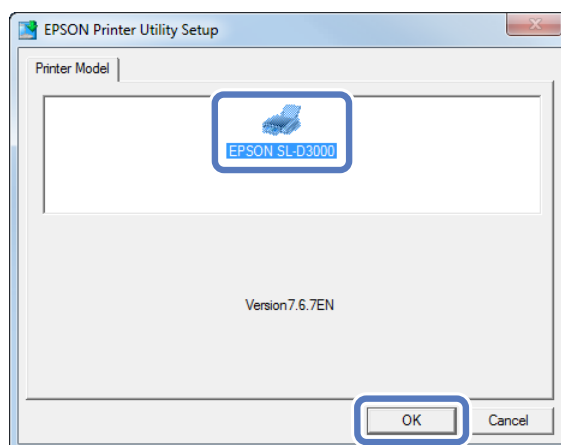
Installing the Printer Driver

- 4** If the Adobe RGB ICC profile is not installed, the following screen is displayed. Follow the on-screen instructions to install the profile.

If the Adobe RGB ICC profile is already installed, the screen from step **5** is displayed.

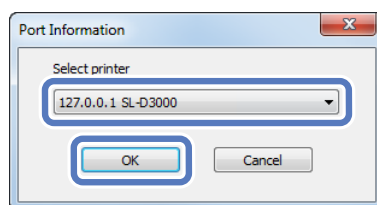


- 5** When the Adobe RGB ICC profile installation is complete, the printer model selection screen is displayed. Select the appropriate printer, and then click **OK**.



- 6** Select the printer name that you want to connect to, and then click **OK**.

When the Printer PC is connected to the printer, the Printer PC's IP address is added in front of the printer name.

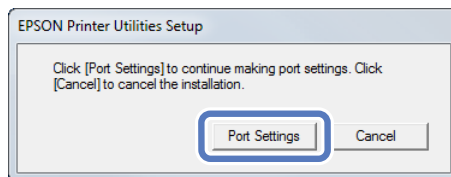


Tip:

- ❑ You can check the printer name in the Maintenance Utility. See the "SL-D3000 Operation Guide" for more information on the Maintenance Utility.
- ❑ If the connected printer cannot be verified, an error message is displayed and the printer cannot be selected. Check that the printer has been added in the Maintenance Utility.

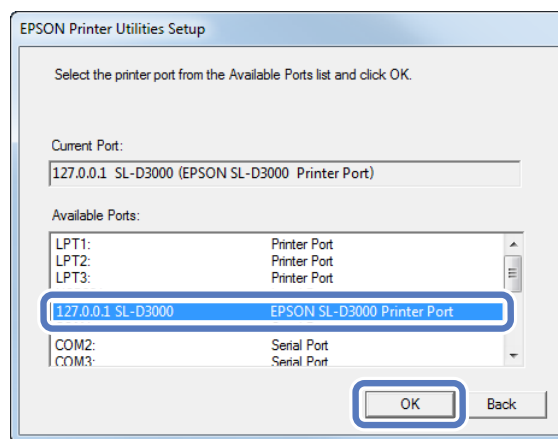
Installing the Printer Driver

- 7** Click **Port Settings**.

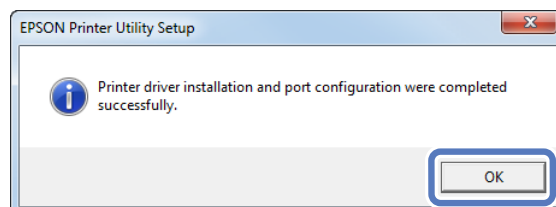


- 8** Check the port you want to connect to, and then click **OK**.

The port is created using the printer name selected in step **6**. Select this port, and then click **OK**.



- 9** Click **OK**.



This completes this section.

Tip:

The printer driver's name is registered as "EPSON SL-D3000". Specify this name when printing from other applications. In system configurations that do not use a Printer PC, the "Print Monitor for SL-D3000" driver is registered for use with the system. This cannot be used as a printer driver.

Printer Driver Functions

Printer Driver Functions

The printer driver is software that allows you to print using information and instructions from other applications.

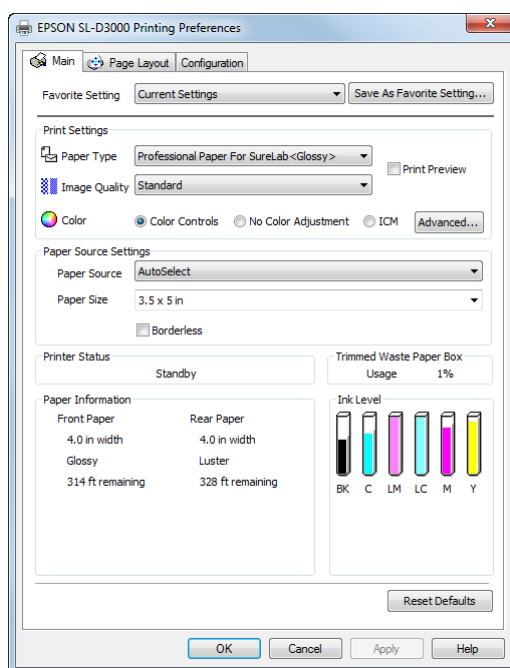
The main functions of the printer driver are described below.


- ❑ Converts print data received from applications into printable data and sends it to the printer.
- ❑ Specifies print settings such as the media type and size on the settings screen.

Main Screen



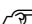

On the Main screen you can set the necessary items and print quality to perform printing.

You can also register your settings as Favorite Setting.



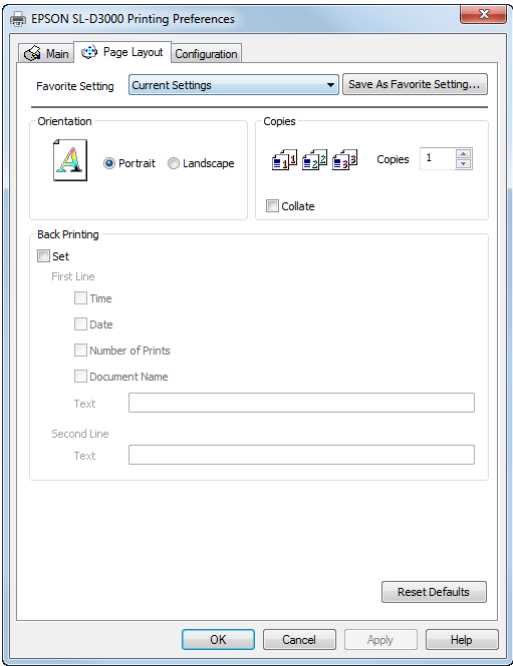
Item	Explanation
Favorite Setting	<p>You can save the settings you prefer, and then apply them when printing.</p> <p> "Saving Printer Driver Settings" on page 31</p>


Printer Driver Functions

Item		Explanation
Print Settings	Paper Type	Select the Paper Type according to the paper being used.
	Image Quality	Select the print quality from Standard (720 dpi) and High Image Quality (1440 dpi). Normally, select Standard . Select High Image Quality when you want to print at a higher resolution. Printing takes longer than in Standard mode, as priority is given to image quality. You can only select High Image Quality when Glossy or Luster is set as the Paper Type.
	Color	Select the color adjustment method to apply while printing.  "Color" on page 19
	Print Preview	Select to display a preview before printing.  "Previewing an Image" on page 29
Paper Source Settings	Paper Source	Displays Paper Source. You can select only AutoSelect. AutoSelect automatically selects the paper source (front or rear) according to the loaded paper.
	Paper Size	Select the paper size used for printing. You can register sizes that are not already included in the list by using User Defined .  "Printing on Custom Paper" on page 27
	Borderless	Select to print without margins around the edge of the paper. If this is not selected, margins may appear around the edges of the print, depending on the operating environment and so on. You can also set the amount of the margins from your software.  "Borderless Printing" on page 25
Printer Status		Displays the printer's current status.
Trimmed Waste Paper Box		Displays the usage status of the trimmed waste paper box.
Paper Information		Displays the width, type, and amount remaining for the loaded paper.
Ink Level		Displays the ink levels.
Reset Defaults		Returns all settings to their defaults.

Printer Driver Functions

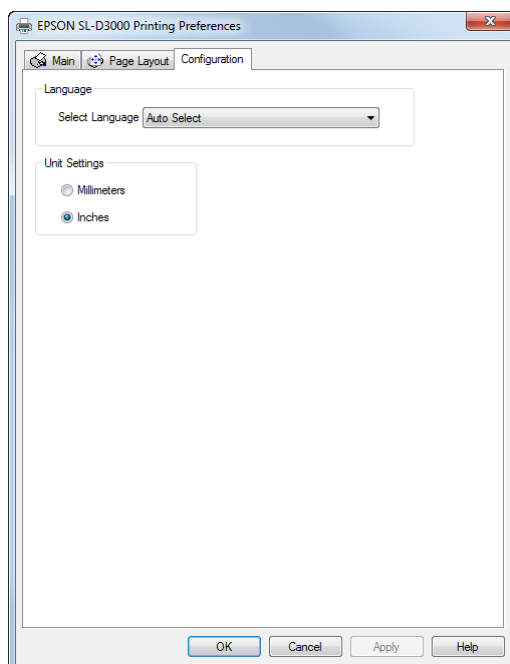
Page Layout Screen



Item		Explanation
Orientation		Click Portrait or Landscape to select the print orientation. This should match the orientation set in the application.
Copies	Copies	Specify the number of copies.
	Collate	Select to print multiple-page documents in sets when printing two or more pages of data.
Back Printing	Set	Select to print the information you have set for First Line and Second Line on the back of the paper. This is available when the Back printing unit is installed.  "Setting Back Printing" on page 32
	First Line	Select the information that you want to print on the first line.
	Second Line	Select the information that you want to print on the second line.

Printer Driver Functions

Configuration Screen



Item	Explanation
Language	Select the language used for the printer driver. Auto Select automatically selects Japanese or English depending on the language of the operating system.
Unit Settings	Select the unit displays.

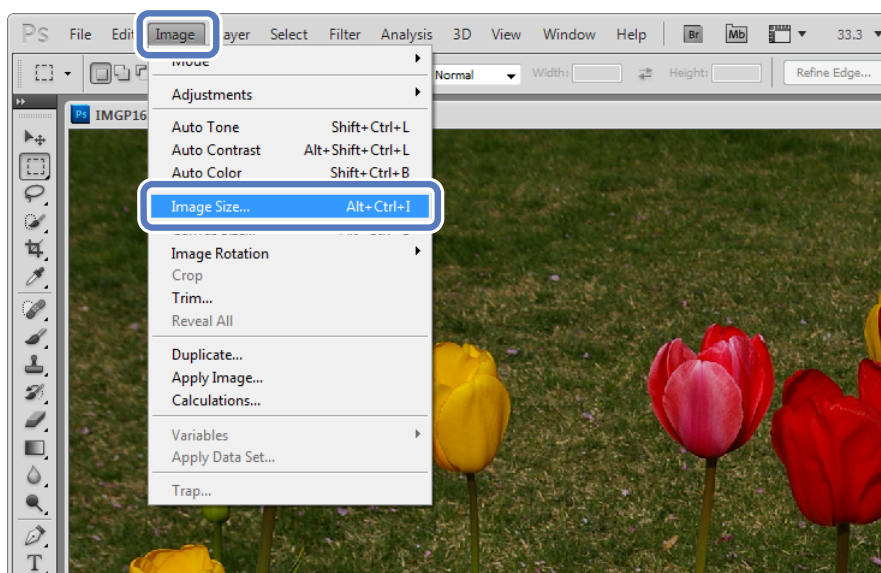
Basic Printing Methods

Printing from PhotoShop

The following section explains how to print image data on your computer using Adobe Photoshop CS5 as an example.

Operations may differ depending on the application being used. For more details, see the instruction manual supplied with your application.

- 1 Start Adobe Photoshop CS5 and open an image.
- 2 Click **Image Size** from the Image menu to display the Image Size screen.



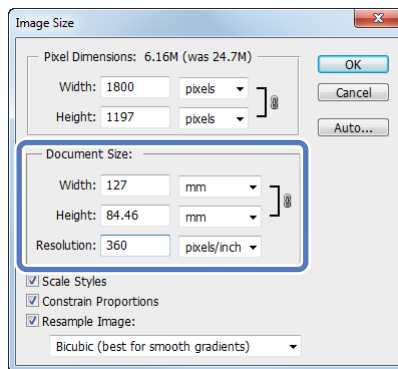
Basic Printing Methods

3 Specify the image size and resolution.

Select **Constrain Proportions**, and then match the **Width** and **Height** to the paper size to be printed.

Specify the **Resolution**. Here, 360 pixel/inch is set as an example.

After making the settings, click **OK**.

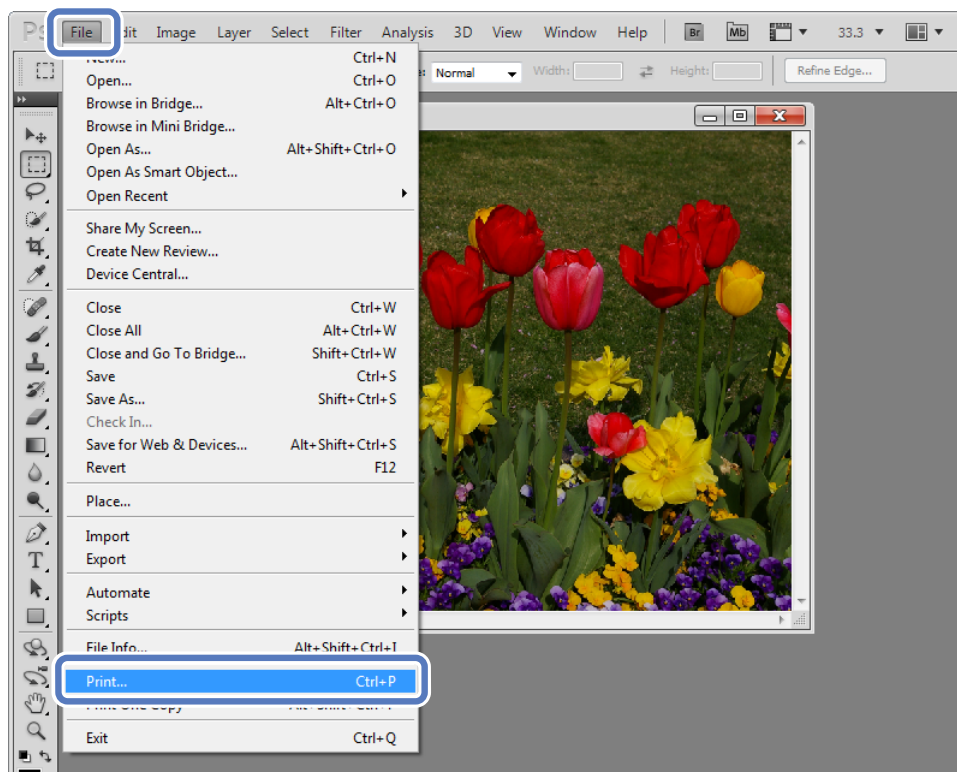


Tip:

You can create fine prints by setting multiples of the Resolution as the printer's Image Quality resolution.

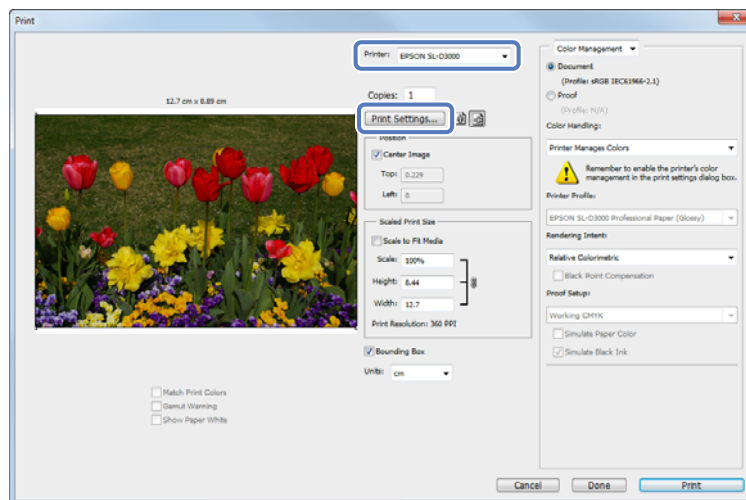
Because the settings for Image Quality are Standard (720 dpi) and High Image Quality (1440 dpi), we recommend making settings in multiples of 180 pixel/inch.

4 Click **Print** from the File menu to display the Print screen.



Basic Printing Methods

- 5 Select this printer from Printer on the Print screen, and then click **Print Settings**.



- 6 Make the necessary settings.

Paper Type: Select the paper type to be used for printing.

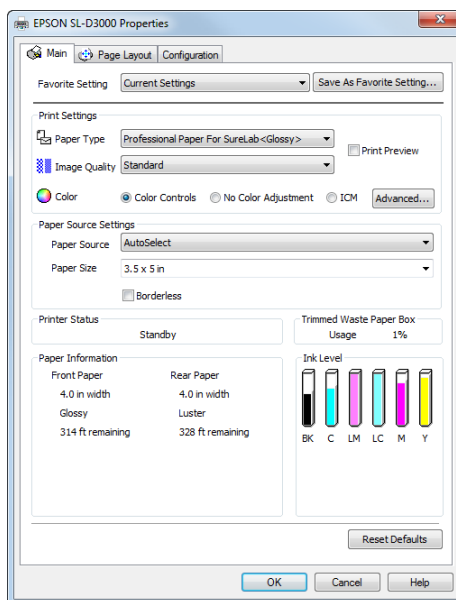
Image Quality: Normally, select **Standard**. Select **High Image Quality** when you want to print at a higher resolution.

Paper Source: You can only select AutoSelect. This setting cannot be changed.

Paper Size: Select the paper size to be used for printing. Make sure you match this to the image size set in step 3.

☞ [“Printer Driver Functions” on page 8](#)

After making the settings, click **OK**.



Tip:

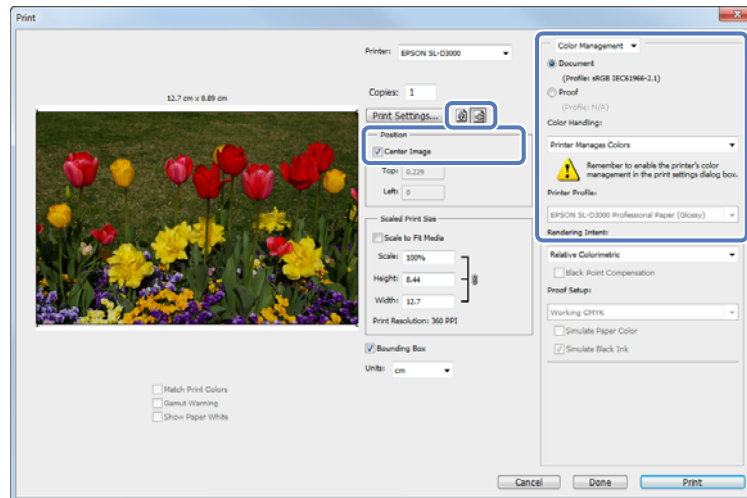
You can only select **High Image Quality** when Glossy or Luster is set as the Paper Type. Select **Print Preview** to display a preview of the image before printing.

☞ [“Previewing an Image” on page 29](#)

Basic Printing Methods

7

On the Print screen, you can set items such as the orientation and position, as well as make color management settings while checking the image.



Tip:

- ❑ When the printer driver's Color is set to **Color Controls** (default), select **Document** as the Color Management setting, and **Printer Manages Colors** as the Color Handling setting.
[☞ "Color" on page 19](#)
- ❑ When performing detailed color management using functions in PhotoShop, match the requirements for Color Management. For more information on PhotoShop functions, see the instruction manual supplied with PhotoShop.
[☞ "Color" on page 19](#)

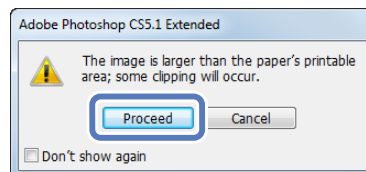
8

Click **Print**.

Tip:

If the image size is larger than the print size, the following screen is displayed.

Click **Proceed**. If you click **Cancel**, printing is cancelled and you are returned to the application's screen.



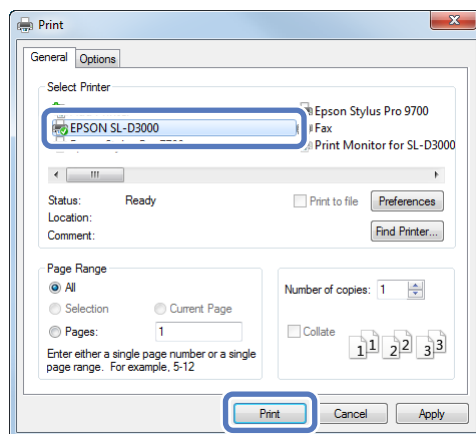
Basic Printing Methods

9

Select this printer, and then click **Print**.

Print data is sent to the printer.

If you selected **Print Preview** in step 6, the preview screen is displayed.

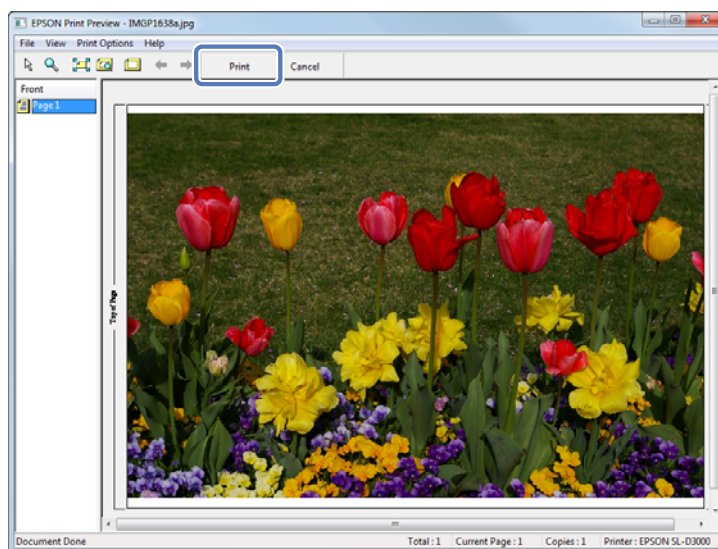


Tip:

Depending on the application you are using, this screen may not be displayed. After performing step 8, print data is sent to the printer.

10

When the preview screen is displayed, check the image, and then click **Print**.



This completes this section.

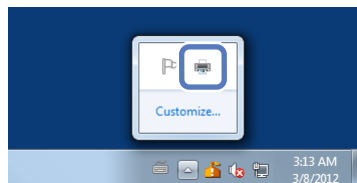
Basic Printing Methods

Canceling Printing

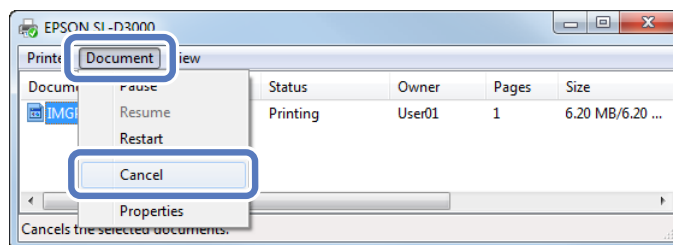
This section explains how to cancel printing.

You can cancel printing from the computer while sending data.

- 1 Double-click the printer icon on the Taskbar to display the print queue.



- 2 Select the print data, and then click **Cancel** from the **Document** menu.

**Note:**

Do not cancel printing when "Print Monitor for SL-D3000" is displayed; otherwise, the system may not operate correctly.

Tip:

Follow the steps below to open the Print Queue screen.

For Windows 7, click **Start - Devices and Printers**, and then double-click the EPSON SL-D3000 icon.

For Windows XP, click **Start - Control Panel - Printers and Other Hardware - Printers and Faxes**, and then double-click the "EPSON SL-D3000" icon.

This completes this section.

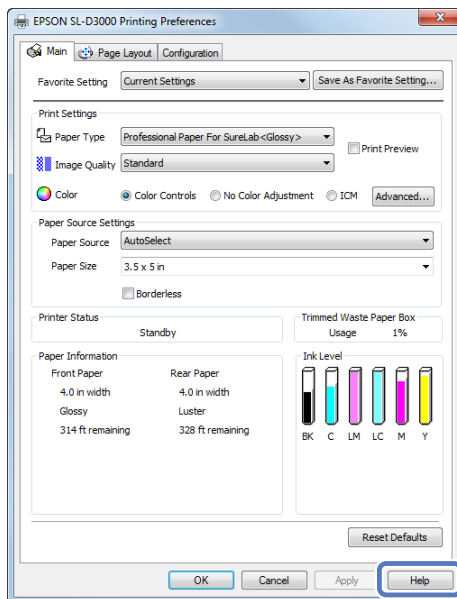
Basic Printing Methods

Displaying the Printer Driver Help

See the printer driver's online help for more details on each printer driver screen and each item.

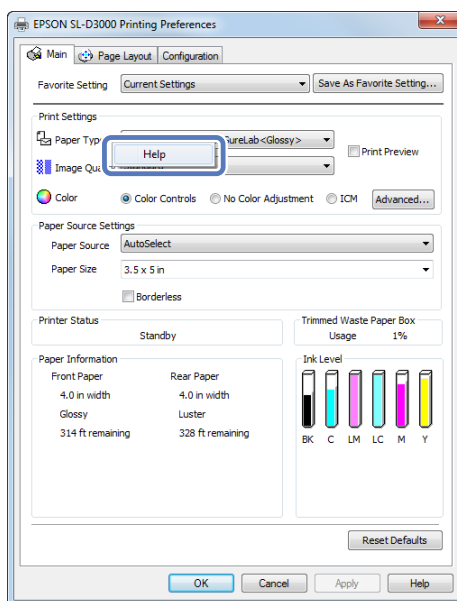
Displaying Help 1

Click **Help** on the printer driver's setting screen. The Help is displayed. From here you can use the contents page to view all of the Help items.



Displaying Help 2

Right-click the item, and then click **Help**.



Printing Using the Printer Driver Functions

Color

Color Settings

You can perform color management in the following three ways by using the printer driver for this printer.

Choose the best method according to the application you are using, the operating system environment, the aim of the print, and so on.

Color Controls for Tone

You can manually adjust the print color space and the tone. This is useful when the application you are using does not have its own color control functions.

 [“Color Controls for Tone” on page 20](#)


Color Management Using the Application (No Color Adjustment)

Color management processes are carried out by the application's color management system. This is useful when you want to obtain the same color management results using a common application among different operating system environments.

 [“Color Management Using the Application \(No Color Adjustment\)” on page 22](#)

Color Management Using the Printer Driver (ICM)

Uses the Windows ICM color management system to process color management. This is effective in producing similar print results from different applications under the same operating systems. However, the application must support color management to perform this type of processing.

 [“Color Management Using the Printer Driver \(ICM\)” on page 23](#)

Printing Using the Printer Driver Functions

Color Controls for Tone

You can select sRGB or Adobe RGB to adjust the color space. You can also manually adjust the color tones while viewing a preview of the image.

- ☐ sRGB: Normally, select sRGB.
- ☐ Adobe RGB: Select when printing data that contains Adobe RGB color space information.

Select **Color Controls** to fine-tune the brightness, contrast, saturation, color balance, and so on.

1 When using applications featuring a color management function, specify how to adjust colors from these applications.

When using applications without a color management function, start from step 2.

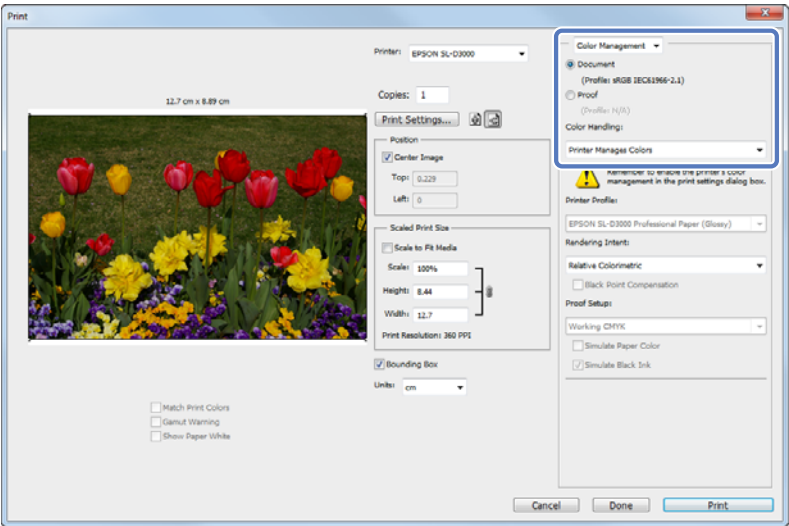
Depending on the type of application, make the settings following the table below.

Application	Color Management Settings
Adobe Photoshop CS5	Printer Manages Colors
Adobe Photoshop Lightroom 3	
Other applications	No Color Management

Example of Adobe Photoshop CS5

Open the **Print** screen.

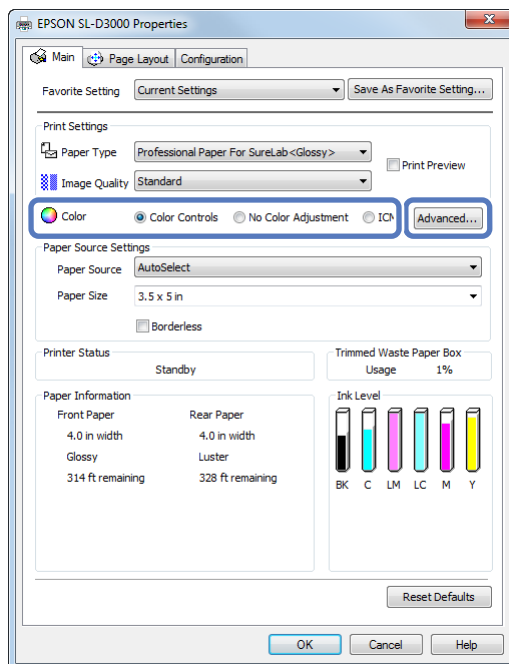
Select **Color Management** and then **Document**. Select **Printer Manages Colors** as the Color Handling setting.



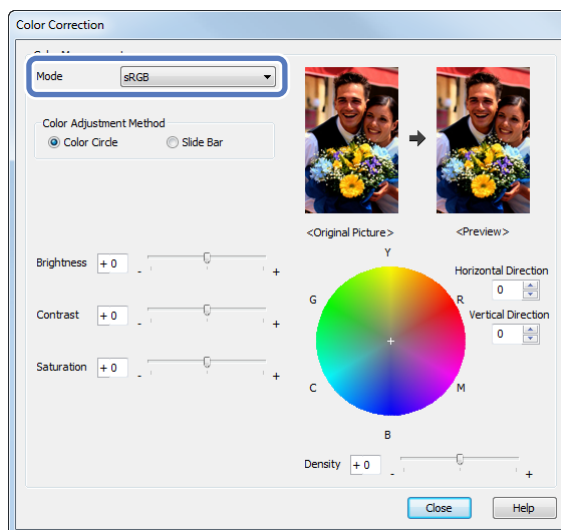
2 Click **Print Settings** to display the printer driver's settings screen.

Printing Using the Printer Driver Functions

- 3** On the Main screen, select **Color Controls** from Color, and then click **Advanced....**



- 4** Select the Color Correction Method.



- 5** Make the necessary settings.

See the printer driver's online help for more details on each item.

Tip:

You can adjust the color while checking the sample image on the left side of the screen. You can also use the color circle to fine-tune the color.

- 6** Specify other items to suit your needs, and then print.

This completes this section.

Printing Using the Printer Driver Functions

Color Management Using the Application (No Color Adjustment)

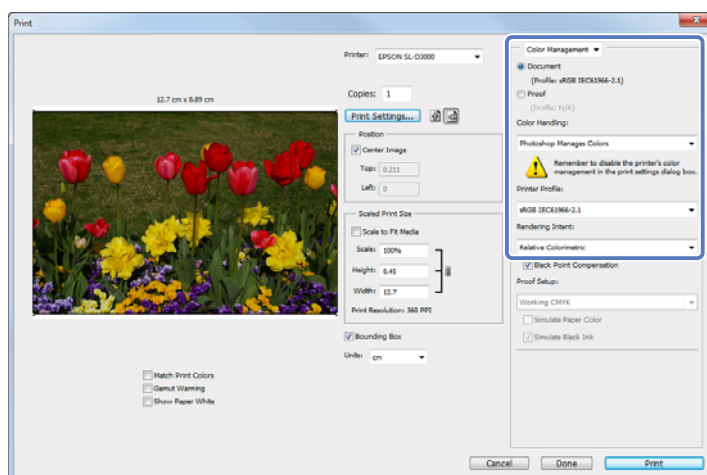
Print from applications that support color management. Enable the color management settings in the application, and disable the printer driver's color adjustment function.

- 1 Make the settings for color adjustment using the application.

Example of Adobe Photoshop CS5

Open the **Print** screen.

Select **Color Management** and then **Document**. Select **Photoshop Manages Colors** as the Color Handling setting, and then select the **Printer Profile** and the **Rendering Intent**.

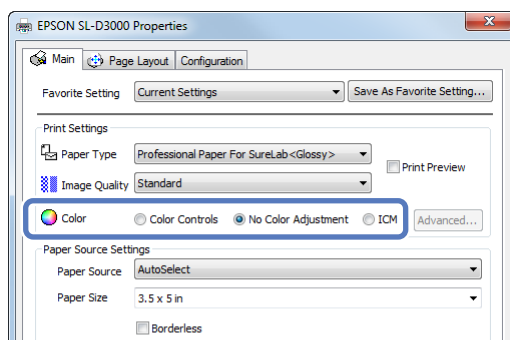


Tip:

If you are not using an original printer profile, select a profile for each paper type from the Printer profile drop-down menu.

- 2 Click **Print Settings** to display the printer driver's settings screen.

- 3 On the Main screen, select **No Color Adjustment** from Color.



- 4 Specify other items to suit your needs, and then print.

This completes this section.

Printing Using the Printer Driver Functions

Color Management Using the Printer Driver (ICM)

Use image data in which an input profile has been embedded. The application must also support ICM.

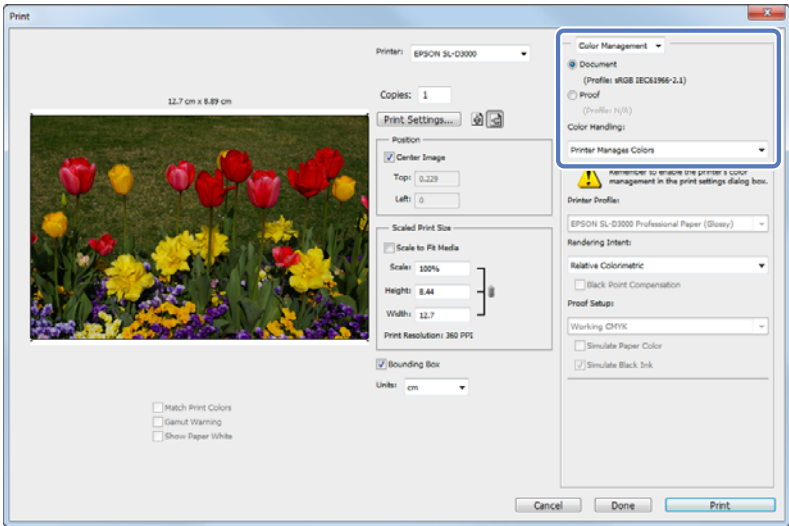
- 1
- Make the settings for color adjustment using the application.

Depending on the type of application, make the settings following the table below.

Application	Color Management Settings
Adobe Photoshop CS5	Printer Manages Colors
Adobe Photoshop Lightroom 3	
Other applications	No Color Management

Example of Adobe Photoshop CS5
Open the **Print** screen.

Select **Color Management** and then **Document**. Select **Printer Manages Colors** as the Color Handling setting.

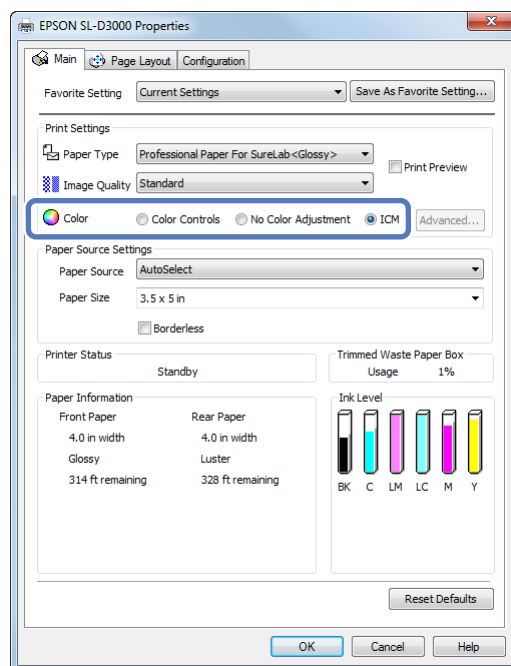


When using applications without a color management function, start from step 2.

- 2
- Click **Print Settings** to display the printer driver's settings screen.

Printing Using the Printer Driver Functions

- 3 On the Main screen, select **ICM** from Color.



- 4 Specify other items to suit your needs, and then print.

This completes this section.

Printing Using the Printer Driver Functions

Borderless Printing

This function allows you to print your data without margins on all four sides.

The printer driver enlarges the print data to a size slightly larger than the paper size and prints the enlarged image. The sections which extend beyond the paper edges are not printed; therefore, resulting in borderless printing. The print data is enlarged by 1.97 mm beyond the paper edges on all four sides.

Use a setting such as page layout in the application to set the size of the image data as follows.

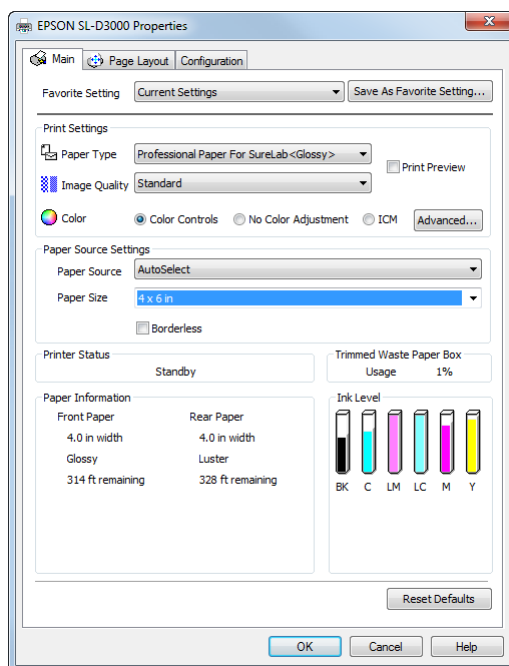
- ☐ Match the paper size and page layout for the print data.
- ☐ If the application has margin settings, specify "0 mm" for the margins.
- ☐ Make the image data as large as the paper size.

Setting Procedures

- 1 Display the printer driver's Main screen.

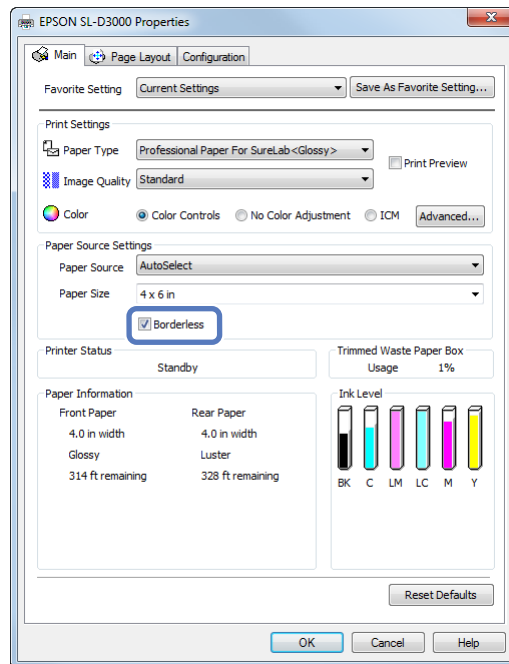
 [“Basic Printing Methods” on page 12](#)

- 2 On the Main screen, specify necessary printing items such as Paper Type, Paper Source, and Paper Size.



Printing Using the Printer Driver Functions

3 Select **Borderless**.



4 Specify other items to suit your needs, and then print.

This completes this section.

Printing Using the Printer Driver Functions

Printing on Custom Paper

You can also print on paper sizes that are not already available in the printer driver. You can register the following sizes.

Width	102, 127, 152, 203, 210, 254, 305 mm
Length	89 to 1219 mm

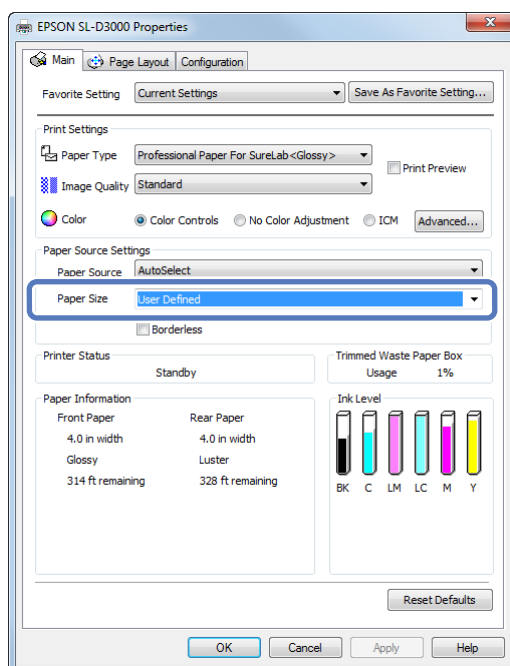
Note:

The available output size is limited depending on the application used for printing.

1 Display the printer driver's Main screen.

 [“Basic Printing Methods” on page 12](#)

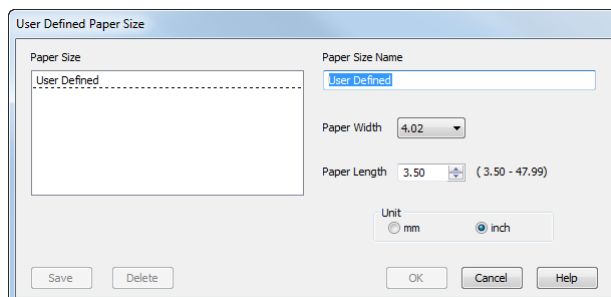
2 On the Main screen, select **User Defined** from Paper Size.



Printing Using the Printer Driver Functions

3

On the User Defined Paper Size screen, enter the name for the paper size, specify the size you want to use, and then click **Save**.



Tip:

- ☐ To change the paper size you registered, select the paper size name from the list on the left.
- ☐ To delete the user-defined size you registered, select the paper size name from the list on the left, and then click **Delete**.
- ☐ You can register up to 30 paper sizes.

4

Click **OK**.

This completes the procedure for registering a new paper size to the list box.

From now on, you can print using the new paper size by following the normal printing procedures.

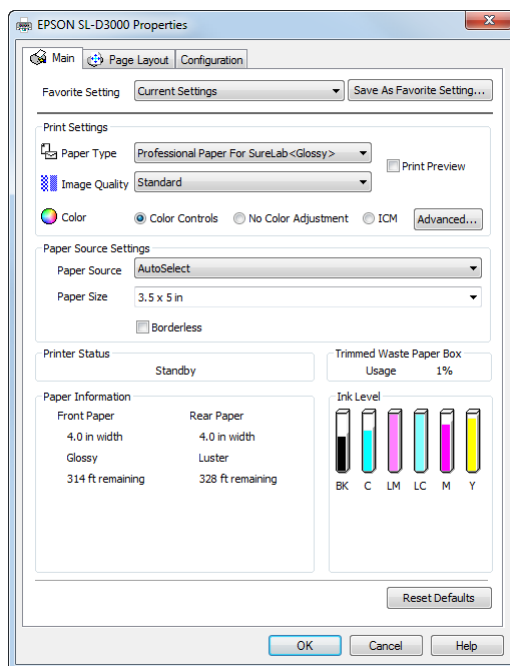
Printing Using the Printer Driver Functions

Previewing an Image

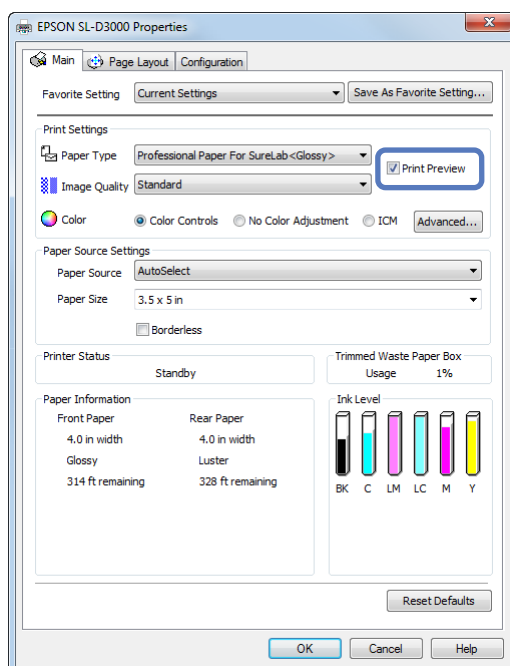
You can display a preview of your image before printing.

- 1 Display the printer driver's Main screen.
[“Basic Printing Methods” on page 12](#)

- 2 On the Main screen, specify necessary printing items such as Paper Type, Paper Source, and Paper Size.



- 3 Select **Print Preview**.



Printing Using the Printer Driver Functions

- 4 Specify other items to suit your needs, and then print.

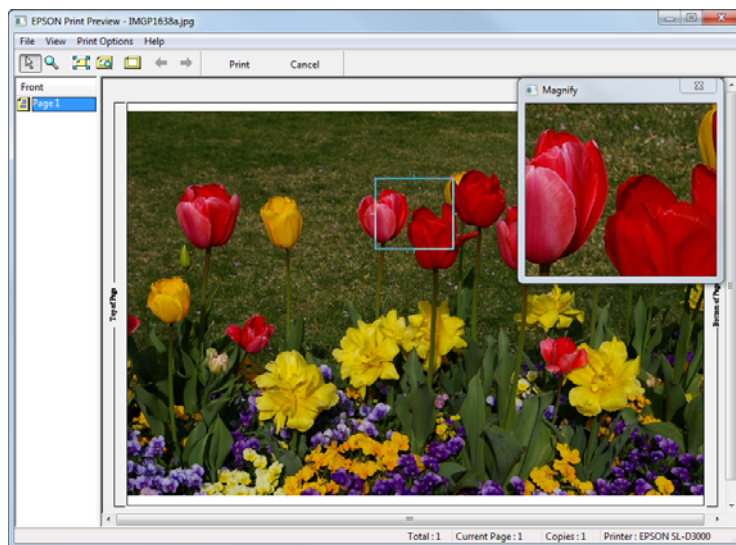
The Print Preview screen is displayed.

- 5 Check the image on the Print Preview screen.

As well as enlarging or reducing the image by using **Zoom**, you can also enlarge the image by using **Magnify** to check the image in more detail.

You can also specify whether or not to print each page.

See the printer driver's online help for more details on each item.



- 6 Click **Print**.

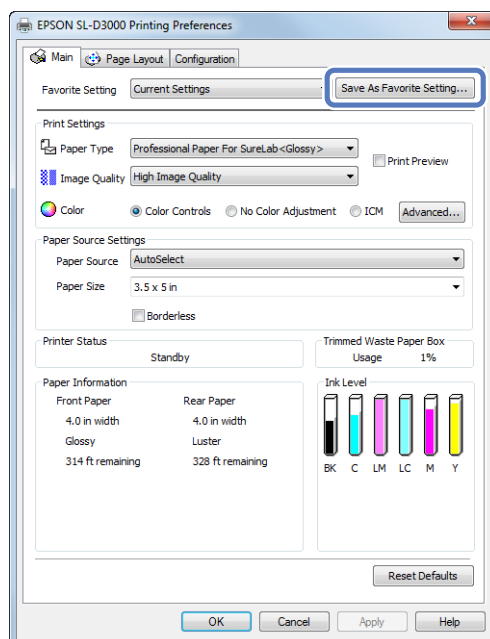
This completes this section.

Printing Using the Printer Driver Functions

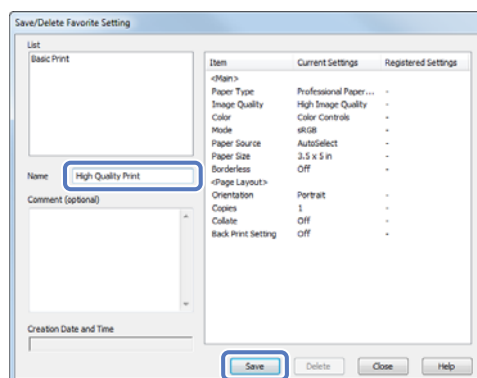
Saving Printer Driver Settings

You can save the settings to suit your preferences, and then apply them when printing.

- 1 Specify each item for the Main screen and the Page Layout screen that you want to save as your Favorite Setting.
- 2 Click **Save As Favorite Setting...** on the Main screen or the Page Layout screen.



- 3 Enter any name in the Name box, and then click **Save**.



Tip:
You can save up to 100 settings.

- 4 You can select the setting you have registered from Favorite Setting.

This completes this section.

Printing Using the Printer Driver Functions

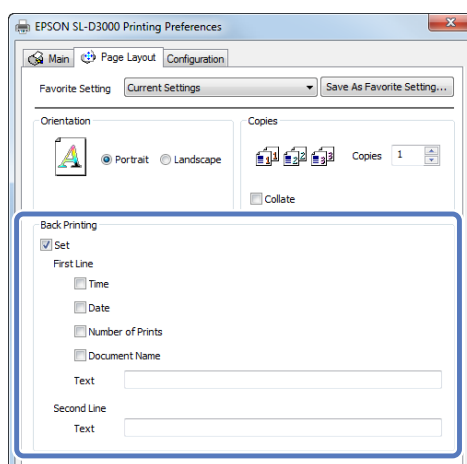
Setting Back Printing

This function allows you to print information used for printing on the back of the paper. Back printing is only available when the Back printing unit is installed.

- 1 Display the printer driver's Page Layout screen.

 [“Basic Printing Methods” on page 12](#)

- 2 Select **Set** from Back Printing, and then specify the printable items.



Item		Explanation
First Line	Time	Prints the time. The first character is an A for morning (AM) or a P for afternoon (PM), and the numbers after that indicate the time in the order hours, minutes, and seconds. Example (eight oh five and fifteen seconds in the morning): A080515
	Date	Prints the date using six characters. The order for Year, Month, Day is displayed according to the Short date setting in Regional and Language Options from your computer's Control Panel. Example (5/24/2010): 052410
	Number of Prints	Prints the number of prints being made.
	Document Name	Up to 40 characters from the file name can be printed. File names longer than 40 characters are abbreviated to fit.
	Text	Prints the entered text. You can enter up to 40 characters.
Second Line	Text	

- 3 Specify other items to suit your needs, and then print.

This completes this section.

Configuration

Setting the Display Language and Units

This function allows you to select the display language and units for the printer driver.

- 1 Display the printer driver's Configuration screen.

To open the printer driver, right-click this printer's icon in the Devices and Printers folder, and then click **Print Settings**.

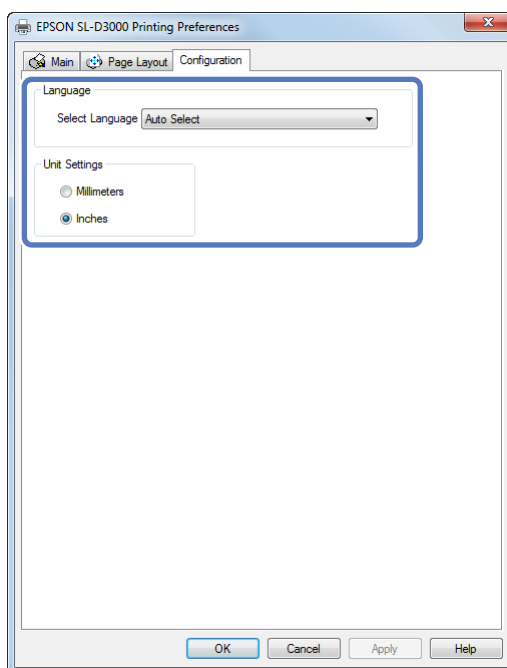
Tip:

Follow the steps below to display the printer icon.

For Windows 7, click **Start - Devices and Printers**.

For Windows XP, click **Start - Control Panel - Printers and Other Hardware - Printers and Faxes**.

- 2 Set the **Language** and **Unit Settings**.



Tip:

When AutoSelect is set for Language, Japanese or English is automatically selected depending on the language of the operating system.

- 3 Click **OK**.

This completes this section.

Problem Solver

When an Error Message is Displayed

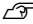
If an error should occur with the printer (it is not working properly), the control panel light turns on and a message is displayed on the screen informing you of the problem.

If you encounter an error message, check the solution on the screen and perform the necessary steps to fix the problem.

You cannot print (because the printer does not work)

Problem	Solution
The printer driver is not installed properly.	Is the printer icon displayed in the Devices and Printers or the Printers and Faxes folder? <input type="checkbox"/> Yes The printer driver is installed. See the following item, "The printer is not communicating with the computer." <input type="checkbox"/> No The printer driver is not installed. Install the printer driver.
	Does the printer port setting match the printer connection port? Check the printer port. Click the Ports tab on the printer driver's Properties screen, and check that a port with the printer's name is set. If it is not displayed, the printer driver is not installed correctly. Delete and reinstall the printer driver.
The printer is not communicating with the computer.	Is the cable plugged in properly? Make sure the printer's interface cable is securely plugged into the correct terminal of the computer and the printer. Also, make sure the cable is not broken nor bent. If you have a spare cable, try connecting with the spare cable.
	Is the pre-operation check complete? The printer is ready after the pre-operation check is complete. See the "SL-D3000 Operation Guide" to confirm if the pre-operation check is complete.
You cannot print under the network environment.	Are the network settings correct? Ask your network administrator for the network settings.
The printer has an error.	Confirm if errors have occurred in the printer by checking the lights and messages on the printer's control panel. See the "SL-D3000 Operation Guide" for more information on solving the problem.

Problem Solver


Problem	Solution
The printer stops printing.	<p>Is the status of print queue Pause? If you stop printing or the printer stops printing because of an error, the print queue enters a Pause status. You cannot print in this status.</p> <p>Double-click the printer icon in the the Devices and Printers or the Printers and Faxes folder, and select Pause from the Printer menu to clear the check.</p>
Your problem is not listed here.	<p>Determine whether the trouble is caused by the printer driver or the application. Perform a test print from the printer driver so that you can check that the connection between the printer and the computer is correct, and that the printer driver settings are correct.</p> <ol style="list-style-type: none"> 1. Load paper with a width of 254 mm (10 inch) or 305 mm (12 inch) in the printer. 2. Check that the printer is ready to print. 3. Right-click this printer's icon in the Devices and Printers or the Printers and Faxes folder, and then select Properties. 4. Select the General tab on the Properties screen, and then click Print Settings to open the driver's settings screen. Select AutoSelect as the Paper Source, and 254 x 305 mm as the Paper Size, and then click OK. 5. Click Print Test Page on the Properties screen. <p>After a while the printer starts to print a test page.</p> <ul style="list-style-type: none"> <input type="checkbox"/> If the test page is printed correctly, the connection between the printer and computer is correct. Go to the next section. <input type="checkbox"/> If the test page is not printed correctly, check the items above again. <p> "You cannot print (because the printer does not work)" on page 34</p> <p>The "Driver Version" shown on the test page is the version number of the Windows internal driver. This differs from the Epson printer driver version that you installed.</p>

Problem Solver

The printer sounds like it is printing, but nothing prints

Problem	Solution
The print head moves, but nothing prints.	Confirm the printer operation. See "SL-D3000 Operation Guide" to print a nozzle check pattern, and check the operations and print status for the printer.
The nozzle check pattern is not printed correctly.	Perform head cleaning. The nozzles may be clogged. See the "SL-D3000 Operation Guide" to print a nozzle check pattern again after performing head cleaning.

The print outs are not what you expected

Problem	Solution
Print quality is poor, uneven, too light, or too dark.	Are the print head nozzles clogged? If the nozzles are clogged, specific nozzles do not eject ink and the print quality declines. See the "SL-D3000 Operation Guide" to perform a nozzle check.
	Are the Paper Type settings correct? Check that the Paper type setting switch on the Operation panel matches the paper type setting on the printer. Also, make sure the Paper Type on the Main screen in the printer driver matches the paper loaded in the printer.
	Have you compared the printing result with the image on the display monitor? Since monitors and printers produce colors differently, printed colors will not always match on-screen colors perfectly.
The color is not exactly the same as another printer.	Colors vary depending on the printer type due to each printer's characteristics. Because inks, printer drivers, and printer profiles are developed for each printer model, the colors printed by different printer models are not exactly the same.
The print is not positioned properly on the paper.	Have you specified the print area? Check the print area in the settings of the application and the printer.
	Is the paper size setting correct? If the Paper Size setting in the printer driver and the size of the loaded paper (width) do not match, the print may not be where you want it, or part of it may be cut off. In this case, check the print settings.
Margins appear in borderless printing.	Are the settings for the print data in the application correct? Make sure that the paper settings in the application are correct as well as in the printer driver.  "Borderless Printing" on page 25

Uninstalling the Printer Driver

Uninstalling the Printer Driver

Tip:

- ☐ You must log in with an Administrator account.
- ☐ In Windows 7, if an Administrator password or confirmation is requested, enter the password and then continue with the operation.

1

Go to the **Control Panel** and click **Uninstall a program** (or **Add or Remove Programs**).



Programs
Uninstall a program

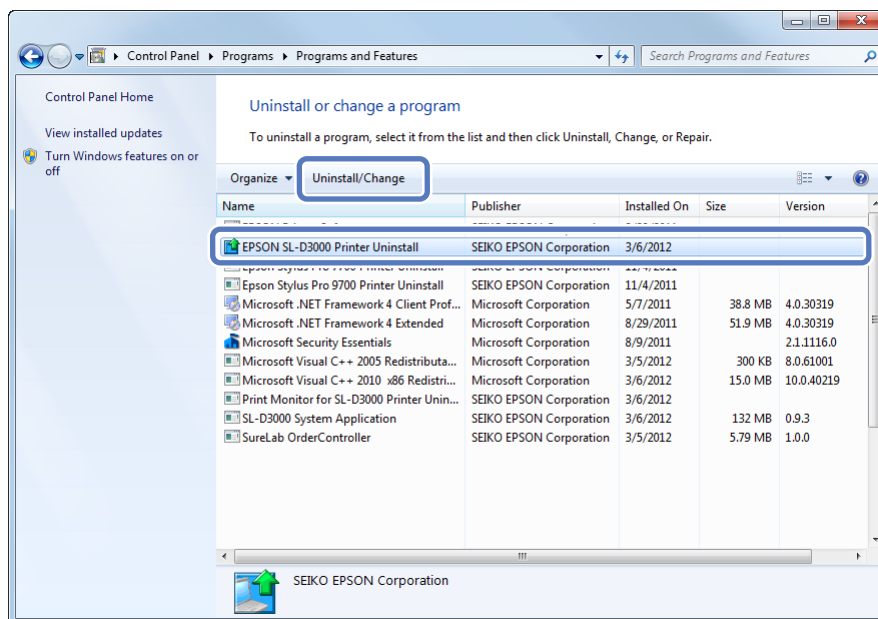
2

Select "EPSON SL-D3000 Printer Uninstall" as the software you want to remove, and then click **Uninstall/Change** (or **Change/Remove/Add or Remove**).

Select **Printer Uninstall** for this printer.

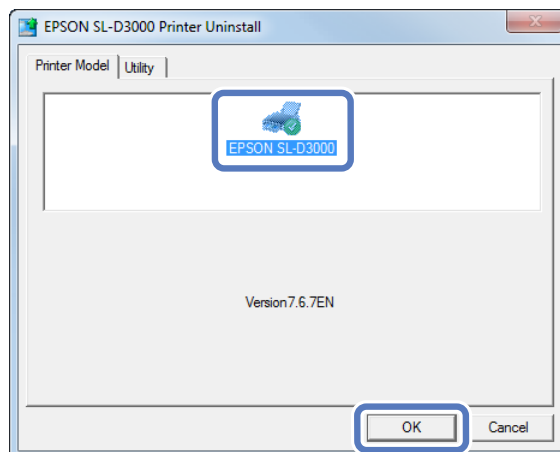
Note:

Do not remove "Print Monitor for SL-D3000". The printer's system application is removed.



Uninstalling the Printer Driver

- 3** Select the target printer icon, and then click **OK**.



- 4** Follow the on-screen instructions to continue.

When the removal confirmation message is displayed, click **Yes**.

Restart the computer if you are reinstalling the printer driver.