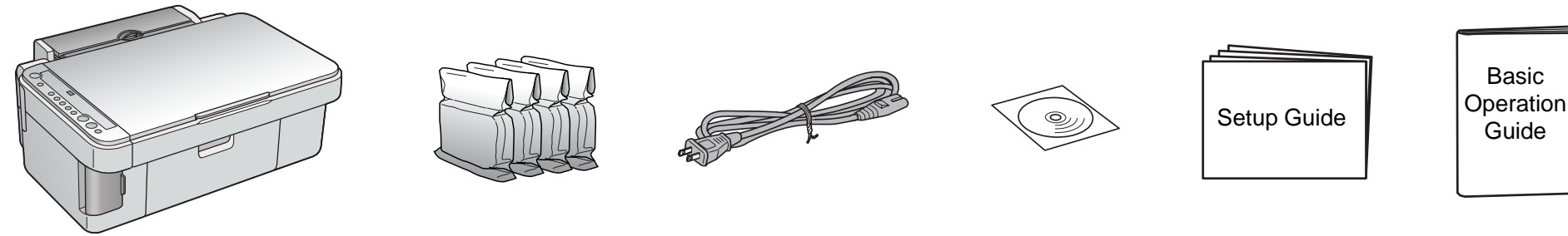


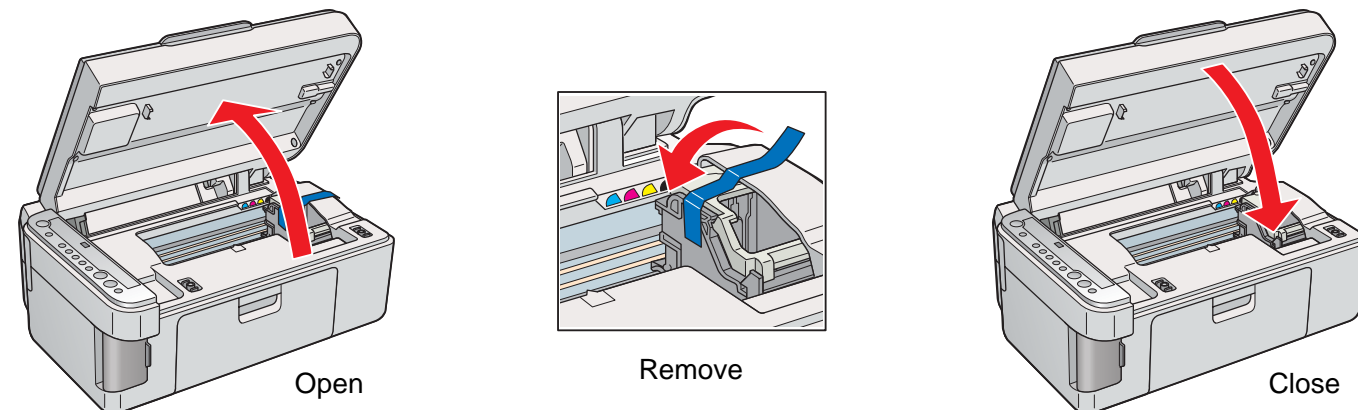
EPSON STYLUS™ CX4500 Series Setup Guide

4049811-00
xxx

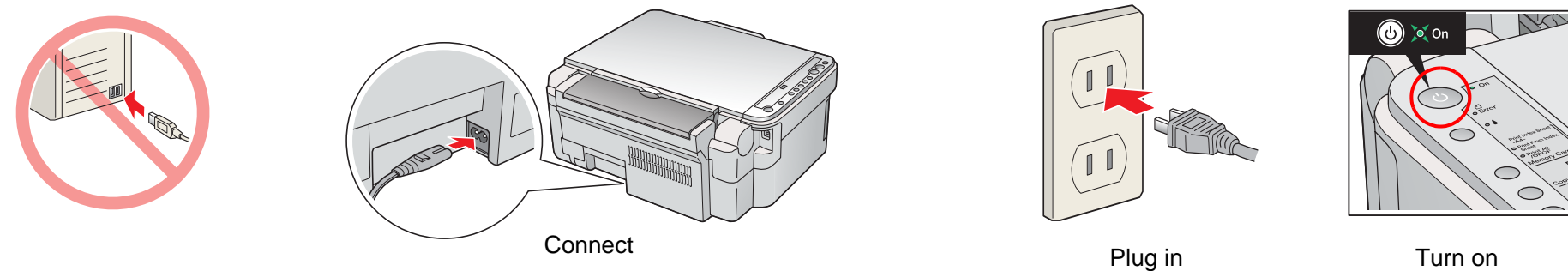
1. Unpacking



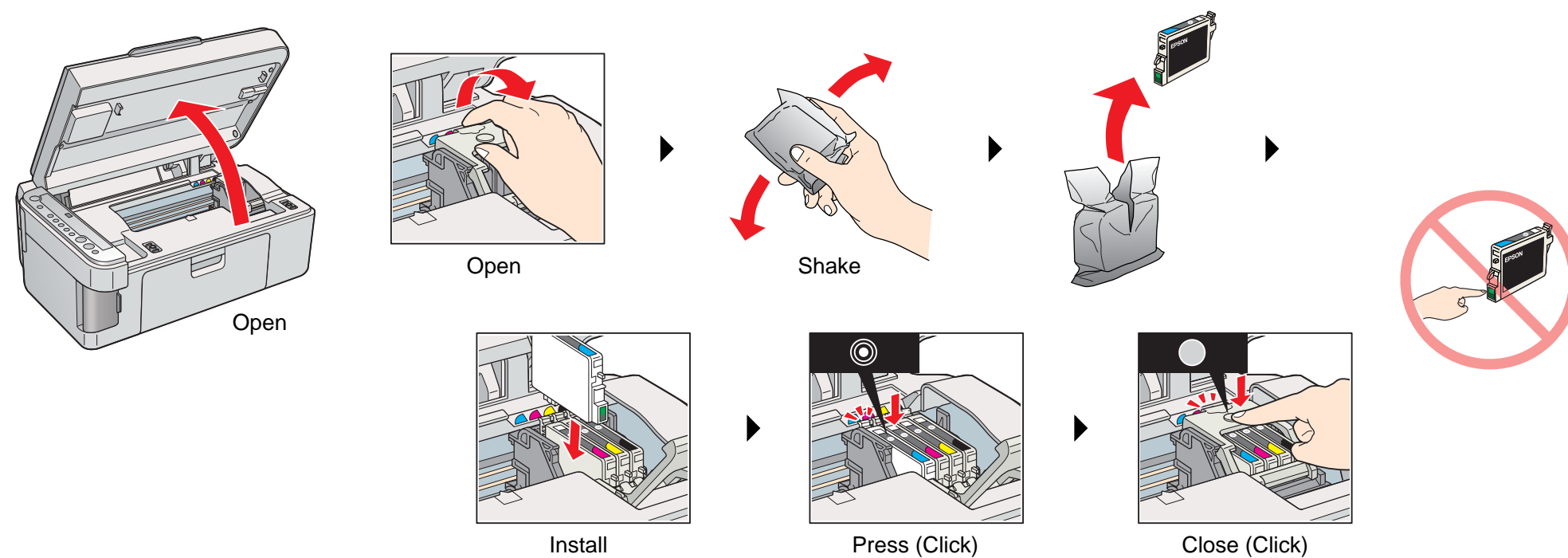
2. Removing Protective Materials



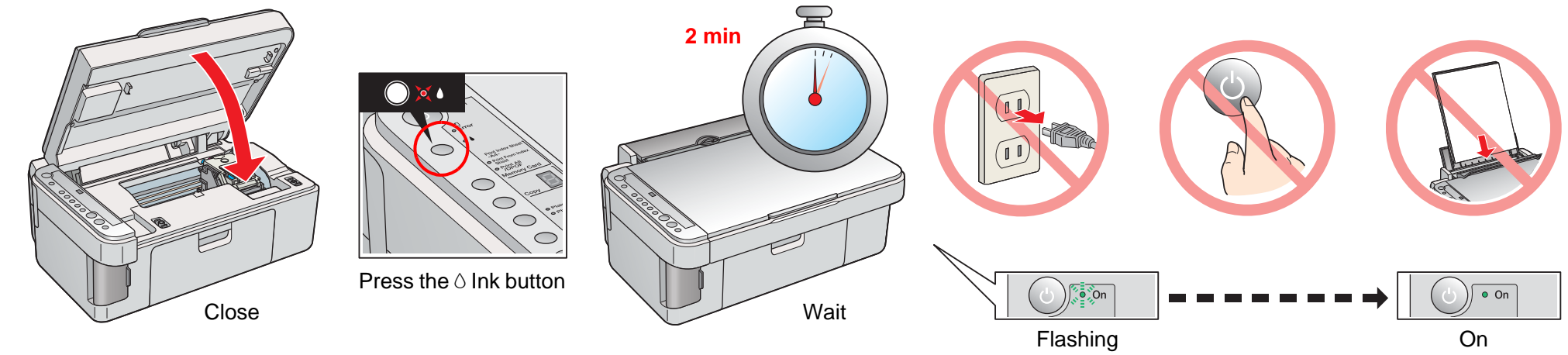
3. Turning On



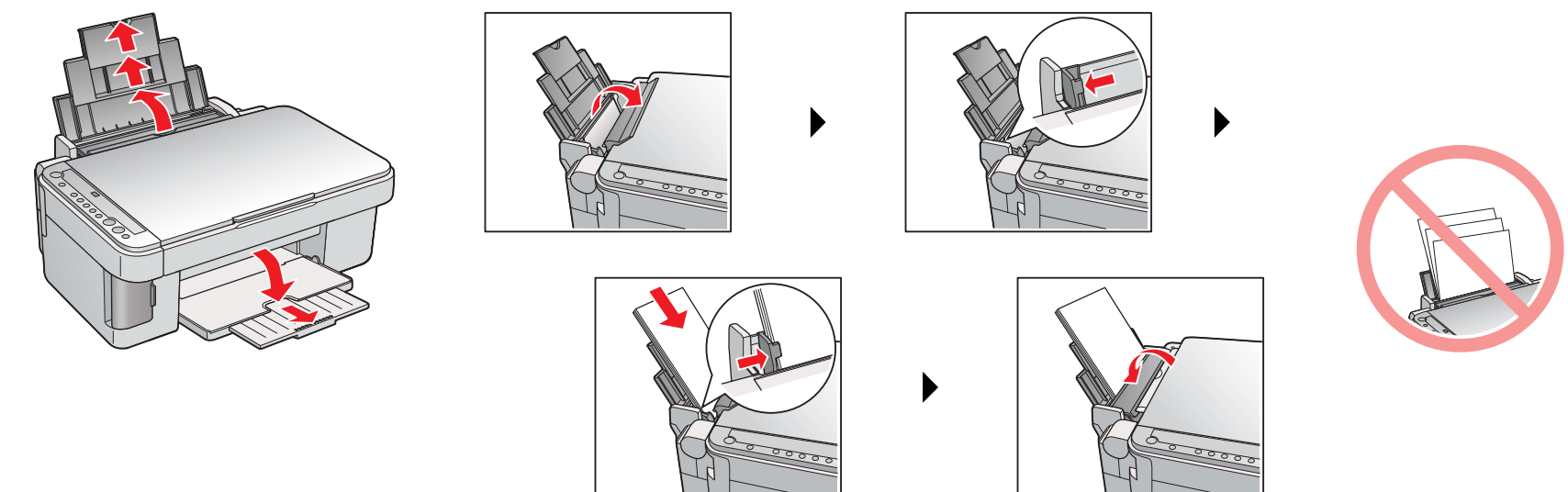
4. Installing Ink Cartridges



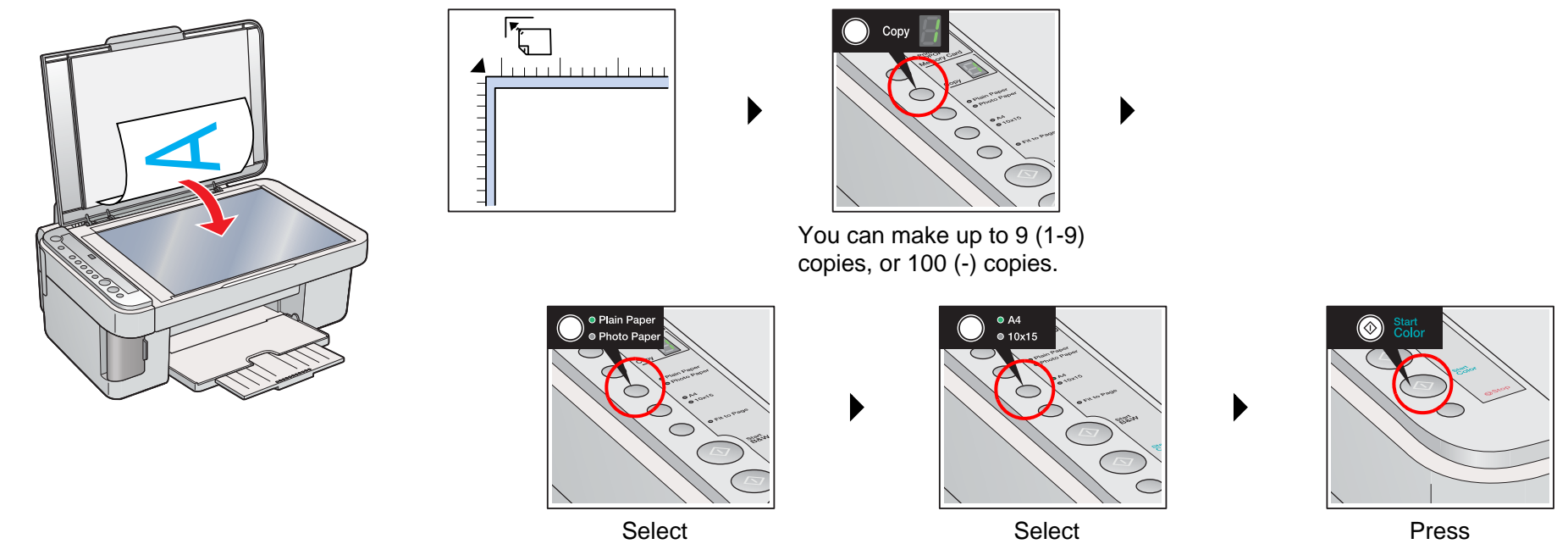
5. Ink Charging



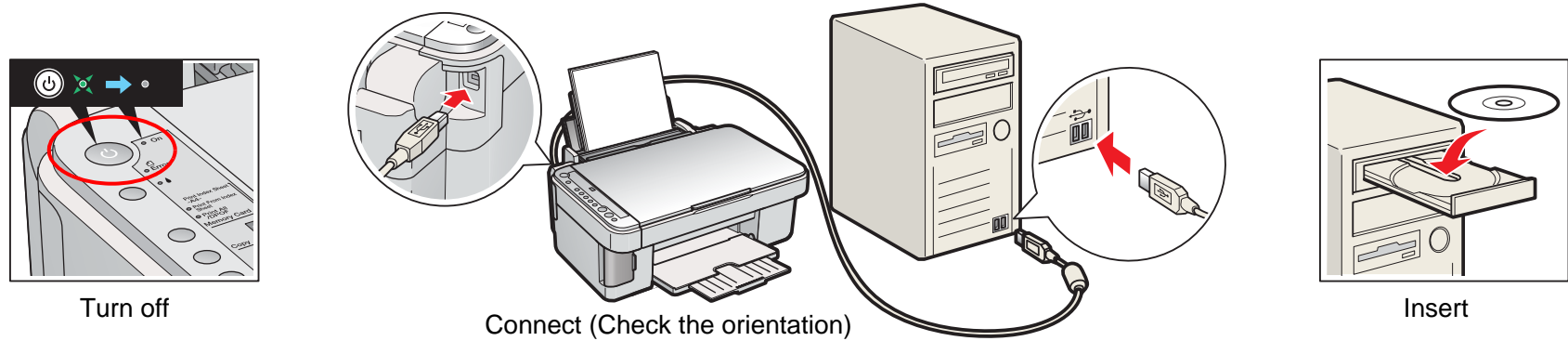
6. Loading Paper



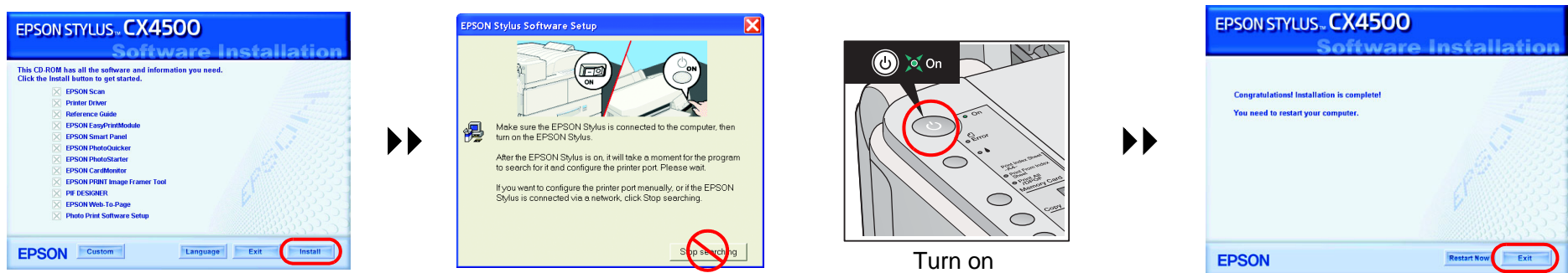
7. Making Copies



8. Connecting to a Computer and Installing the Software

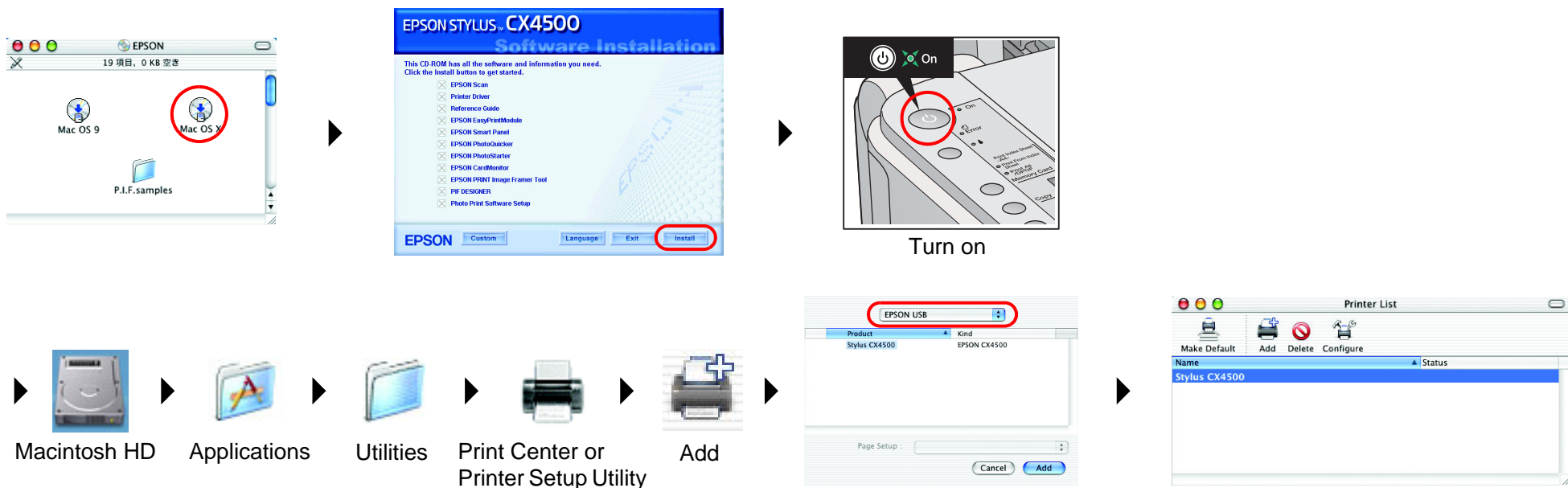


For Windows

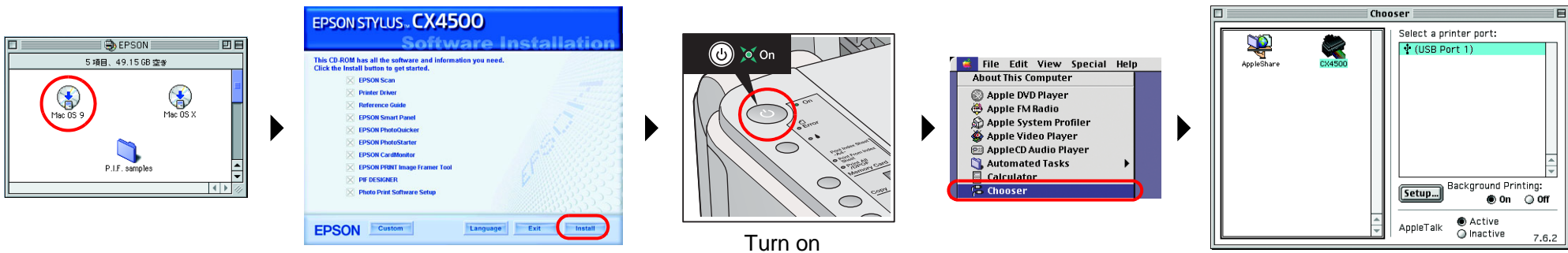


- ❑ If the installer dialog box does not appear, double-click CD-ROM icon.
- ❑ A screen appears after installation has been completed successfully. Restart your computer to start using this product from your computer.

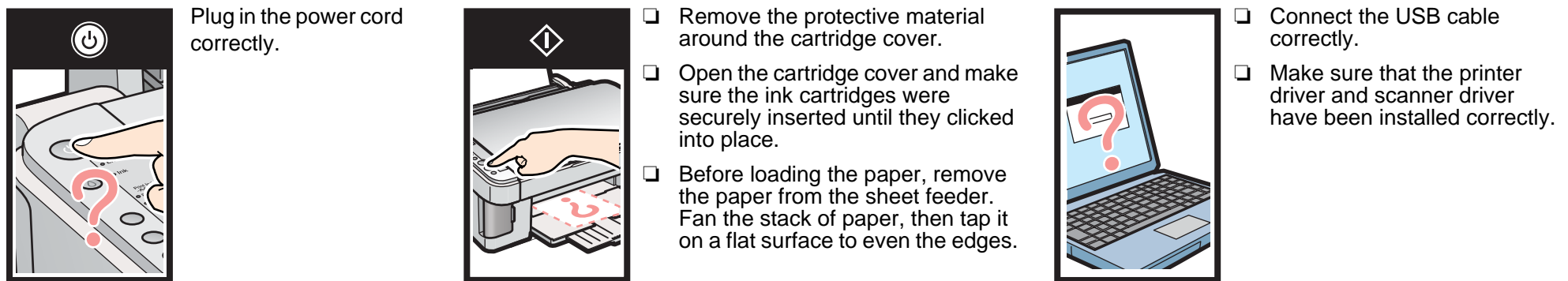
For Mac OS X



For Mac OS 9



Troubleshooting



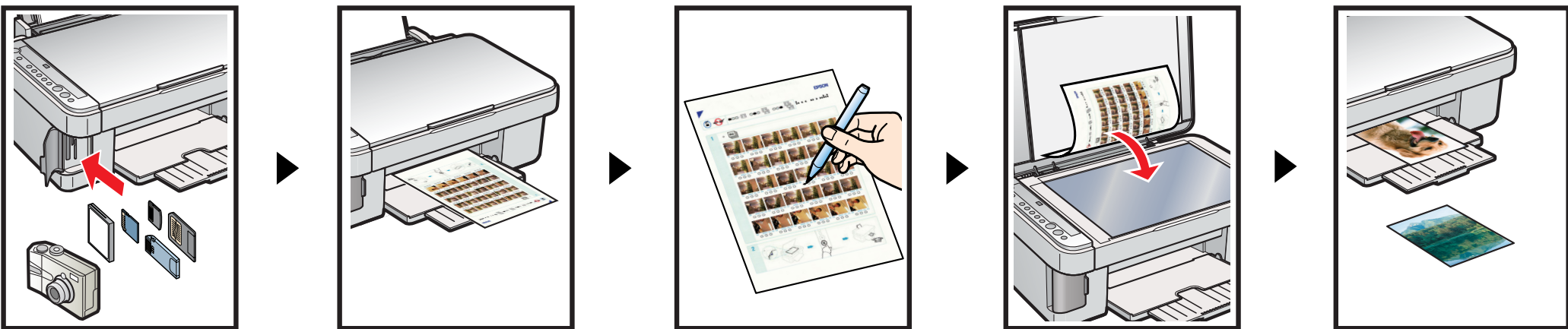
Features

Copying



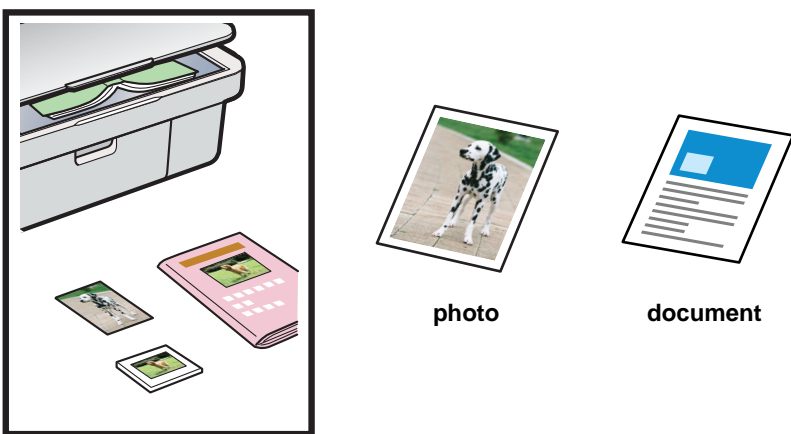
For more information on using the copy functions, see the Basic Operation Guide.

Direct Printing



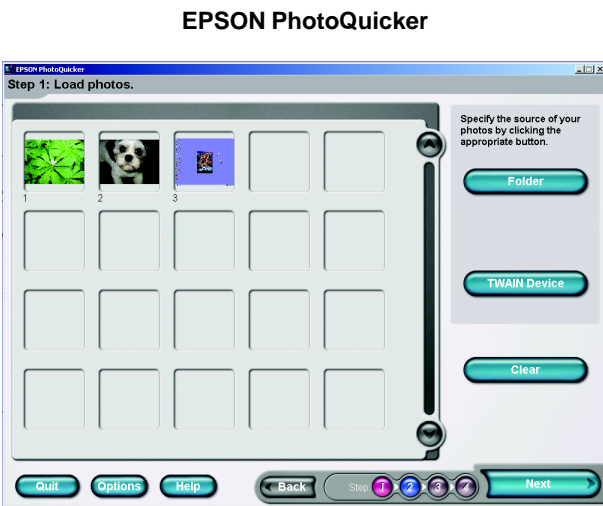
For more information on using the direct printing functions, see the Basic Operation Guide.

Scanning



You can use scanned images in various ways with EPSON Smart Panel. Use it to scan, send a fax, or send an e-mail. See the Online Reference Guide for detail.

Printing



You can print documents and web pages from your applications. You can also make photos, postcards, and posters from your computer. It is easy to make those using the software "EPSON PhotoQuicker". See the Online Reference Guide for detail.

Getting More Information

Basic Operation Guide	Describes the basic procedures for copying, printing, scanning and other information.
Online Reference Guide	Describes how to print and scan in detail. Maintenance and troubleshooting tips, in addition to technical and customer support information are also included. Double-click the ESCX4500 Reference Guide icon on the desktop.