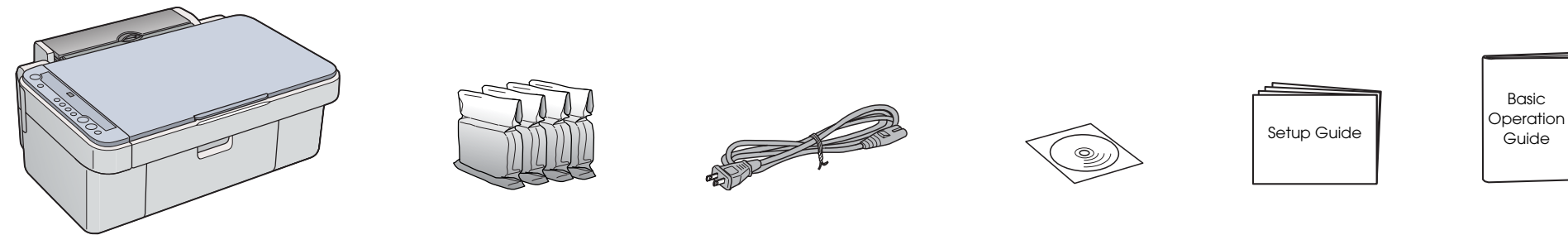


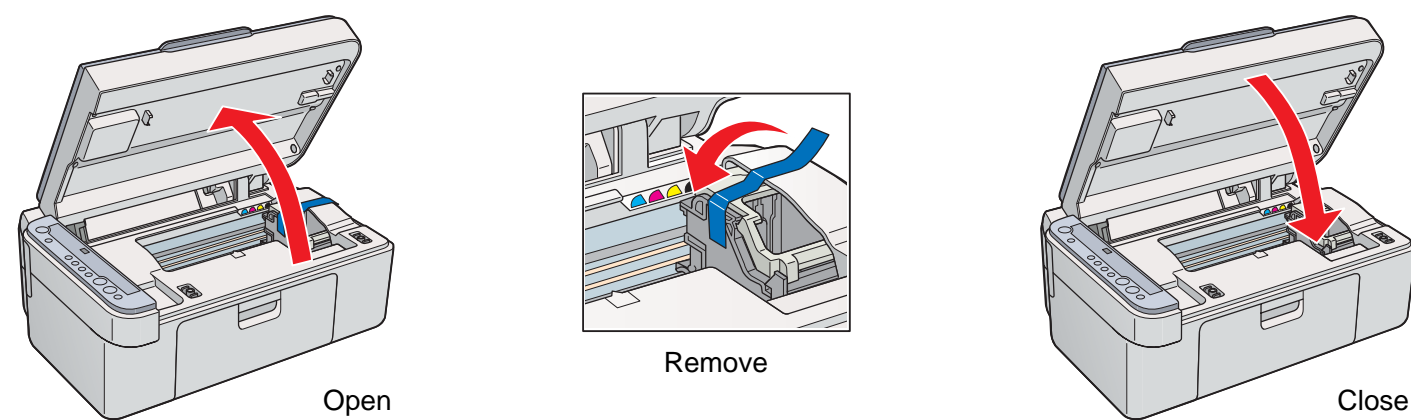
EPSON STYLUS™ CX3500 Series Setup Guide

4049441-00
XXXX

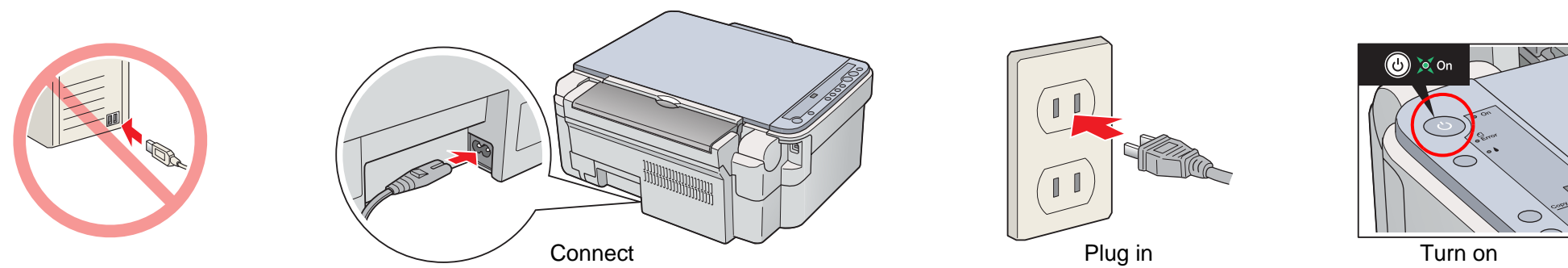
1. Unpacking



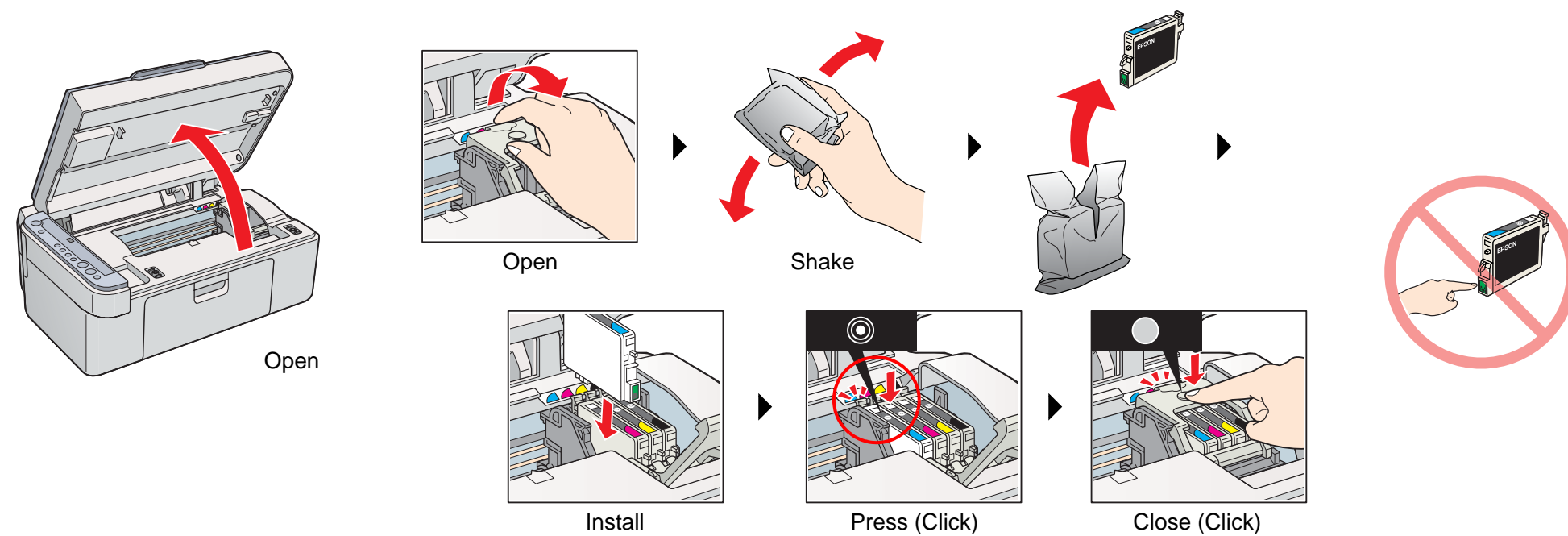
2. Removing Protective Materials



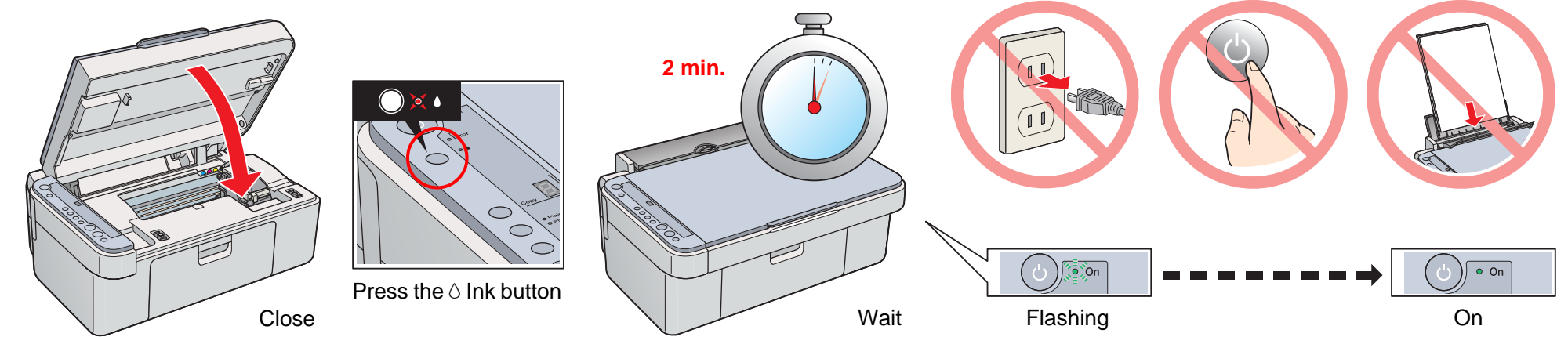
3. Turning On



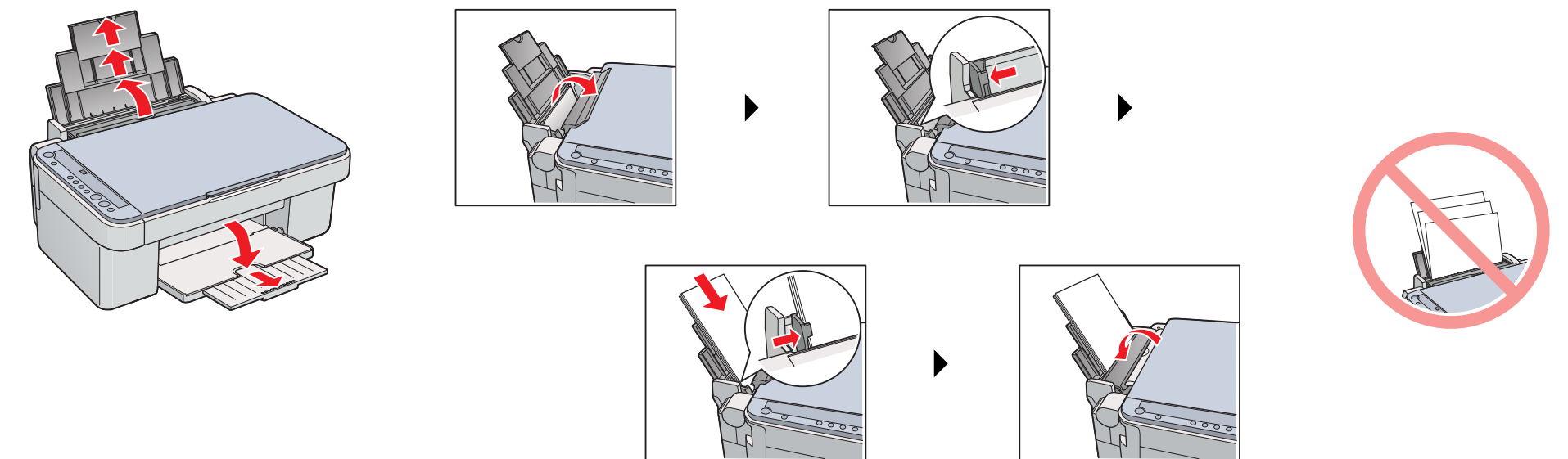
4. Installing Ink Cartridges



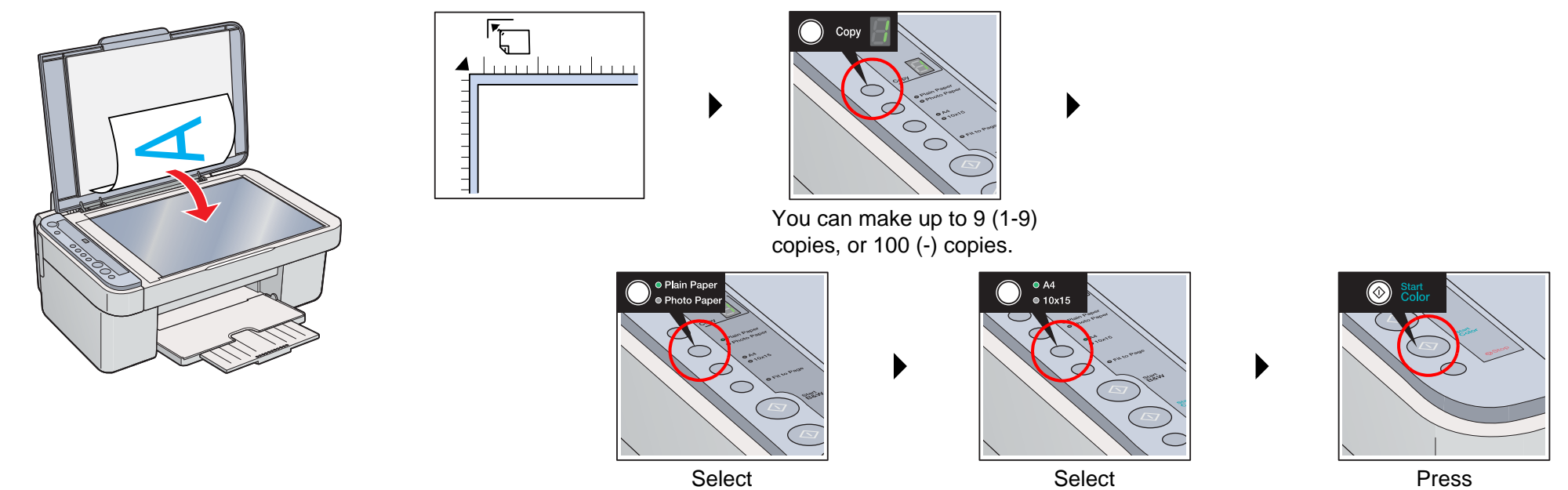
5. Ink Charging



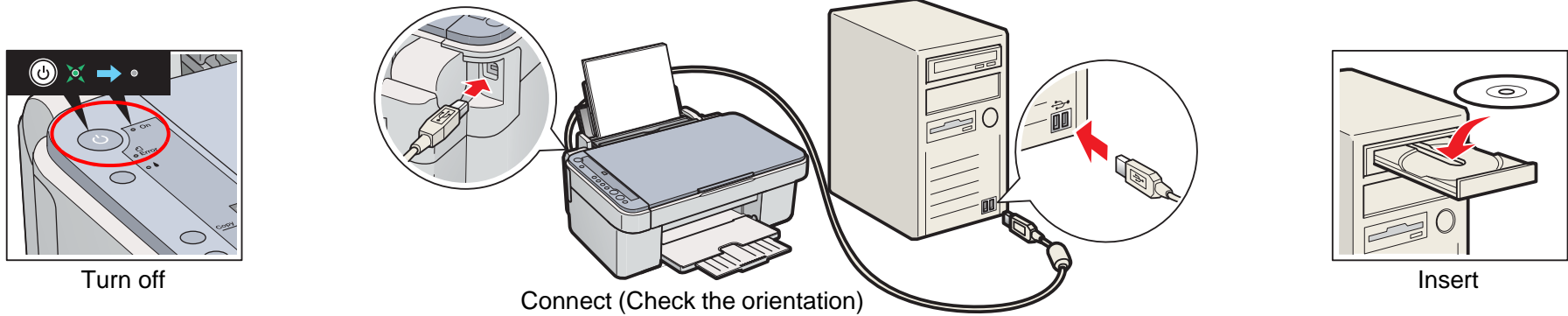
6. Loading Paper




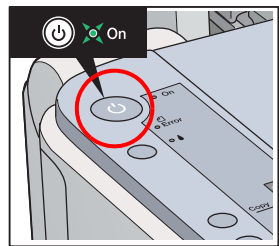
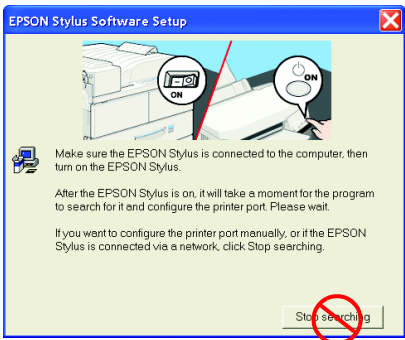
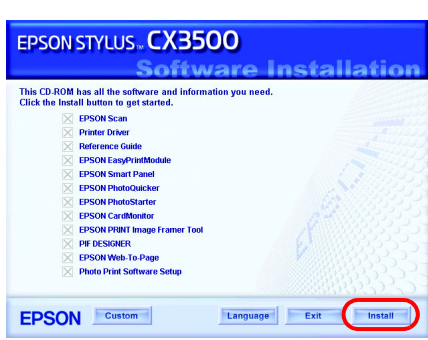
7. Making Copies



8. Connecting to a Computer and Installing the Software



For Windows



Turn off

Connect (Check the orientation)

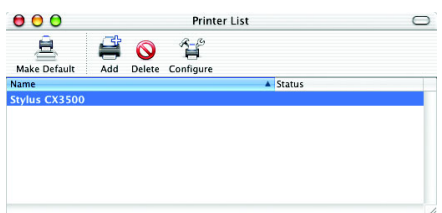
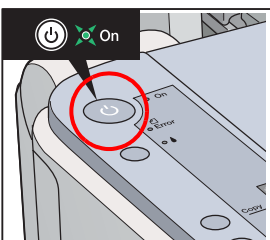
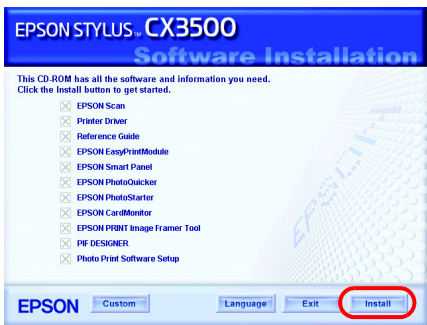
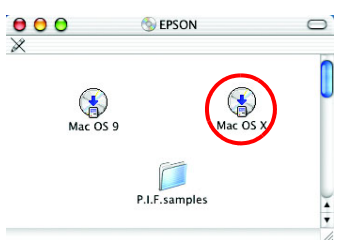
Insert

Turn on

If the installer dialog box does not appear, double-click CD-ROM icon.

A screen appears after installation has been completed successfully. Restart your computer to start using this product from your computer.

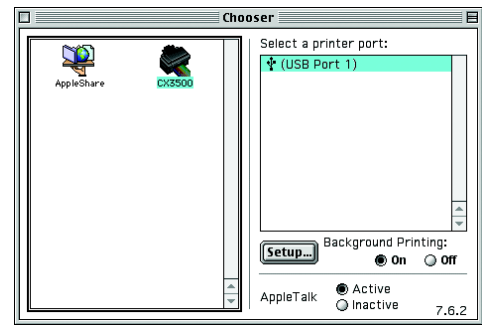
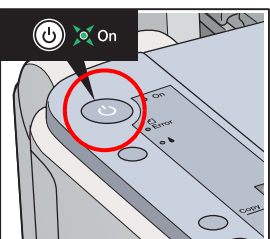

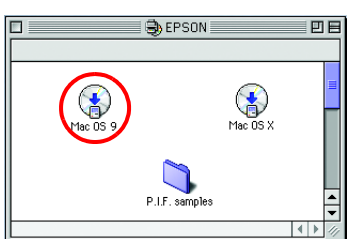
For Mac OS X



Turn on




Macintosh HD Applications Utilities Print Center or Printer Setup Utility Add

For Mac OS 9



Turn on

Troubleshooting



Plug in the power cord correctly.

Remove the protective material around the cartridge cover.

Open the cartridge cover and make sure the ink cartridges were securely inserted until they clicked into place.

Before loading the paper, remove the paper from the sheet feeder. Fan the stack of paper, then tap it on a flat surface to even the edges.

Connect the USB cable correctly.

Make sure that the printer driver and scanner driver have been installed correctly.

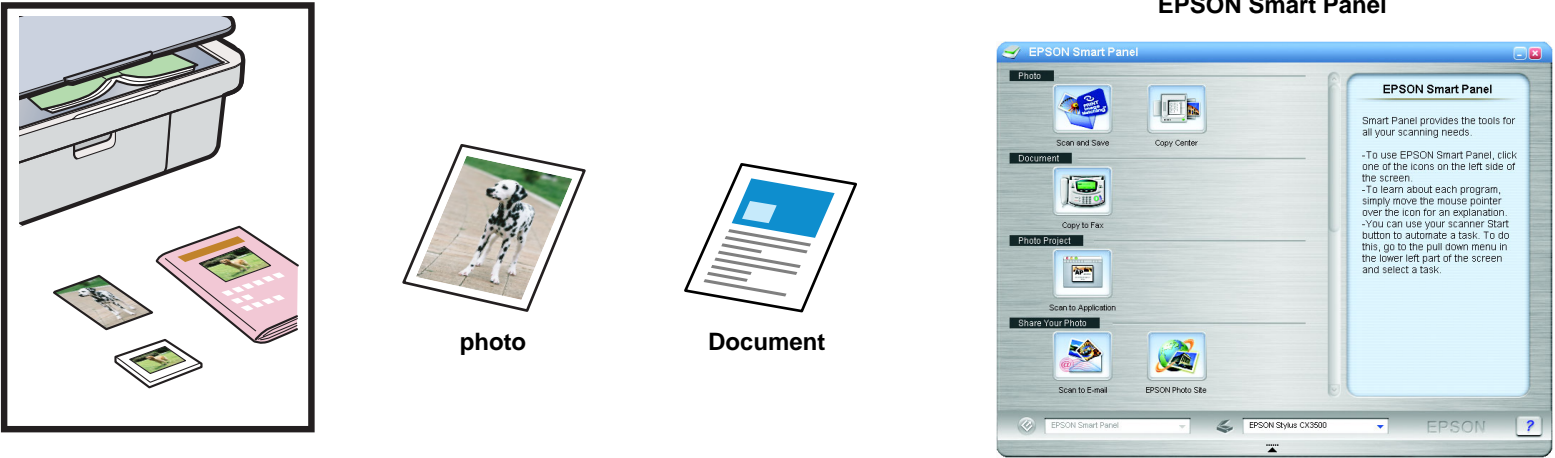
Features

Copying



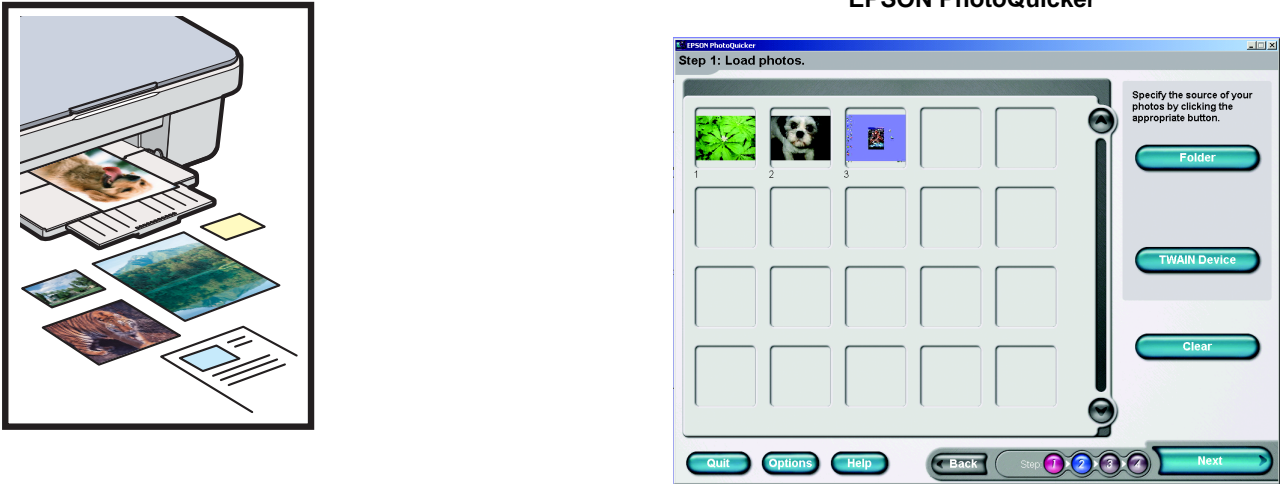
For more information on using the copy functions, see the Basic Operation Guide.

Scanning



You can use scanned images in various ways with EPSON Smart Panel. Use it to scan, send a fax, or send an e-mail. See the Online Reference Guide for detail.

Printing



You can print documents and web pages from your applications. You can also make photos, postcards, and posters from your computer. It is easy to make those using the software "EPSON PhotoQuicker". See the Online Reference Guide for detail.

Getting More Information

Basic Operation Guide	Describes the basic procedures for copying, printing, scanning and other information.
Online Reference Guide	Describes how to print and scan in detail. Maintenance and troubleshooting tips, in addition to technical and customer support information are also included. Double-click the ESCX3500 Reference Guide icon on the desktop.