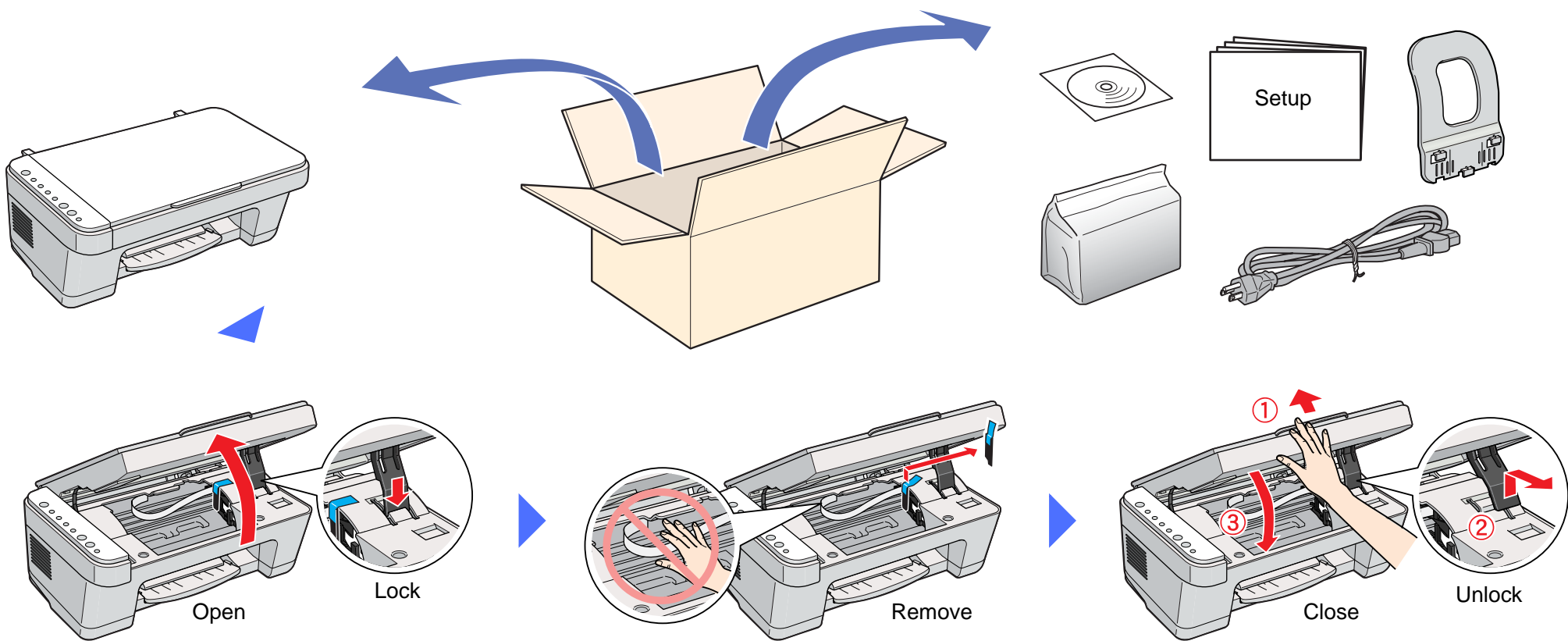


EPSON STYLUS™ CX1500 Series

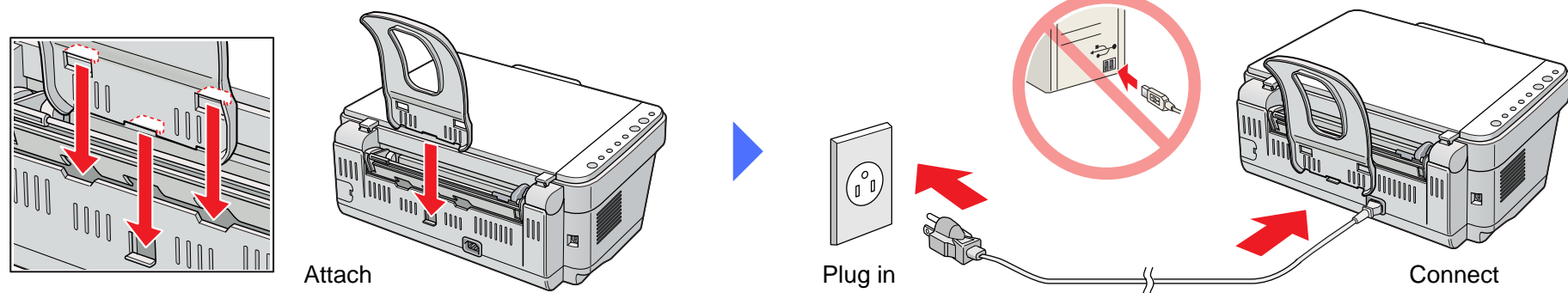
# Setup Guide

4050366-00  
xxx

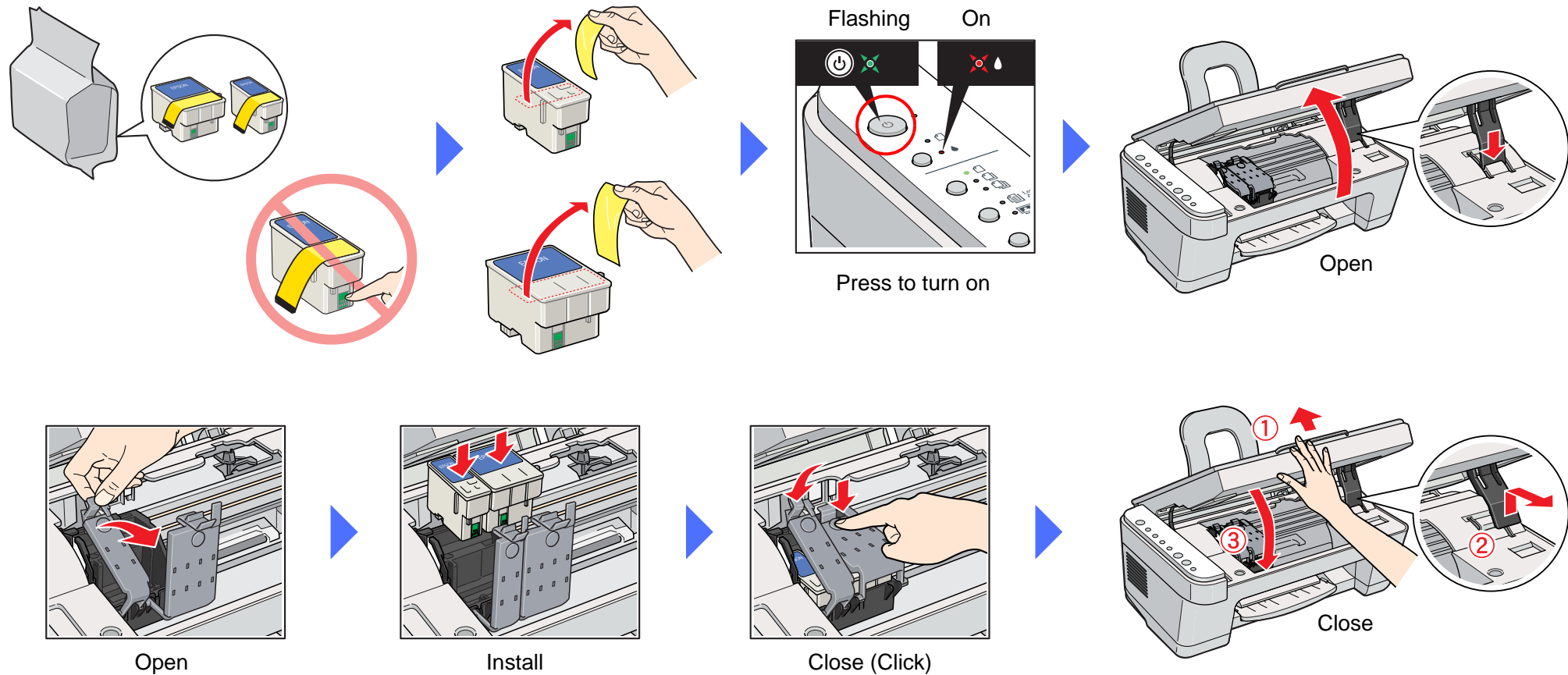
## 1. Unpacking



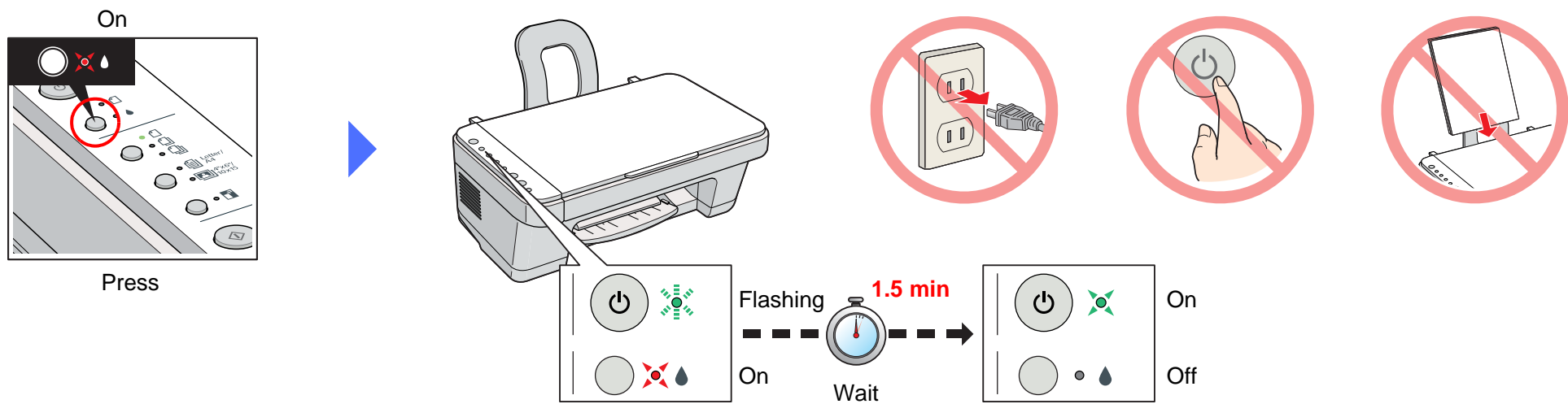
## 2. Attaching the Parts



## 3. Installing Ink Cartridges

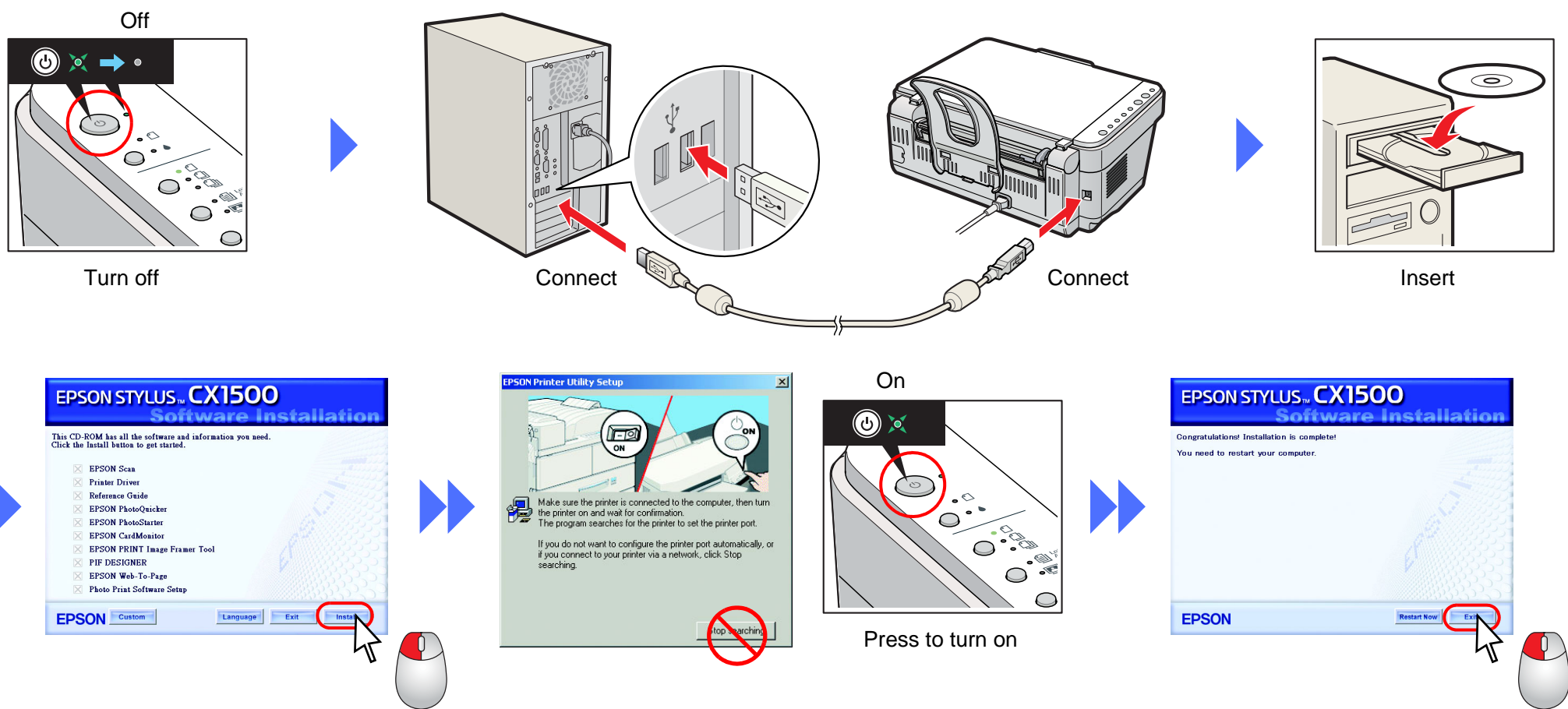


## 4. Ink Charging



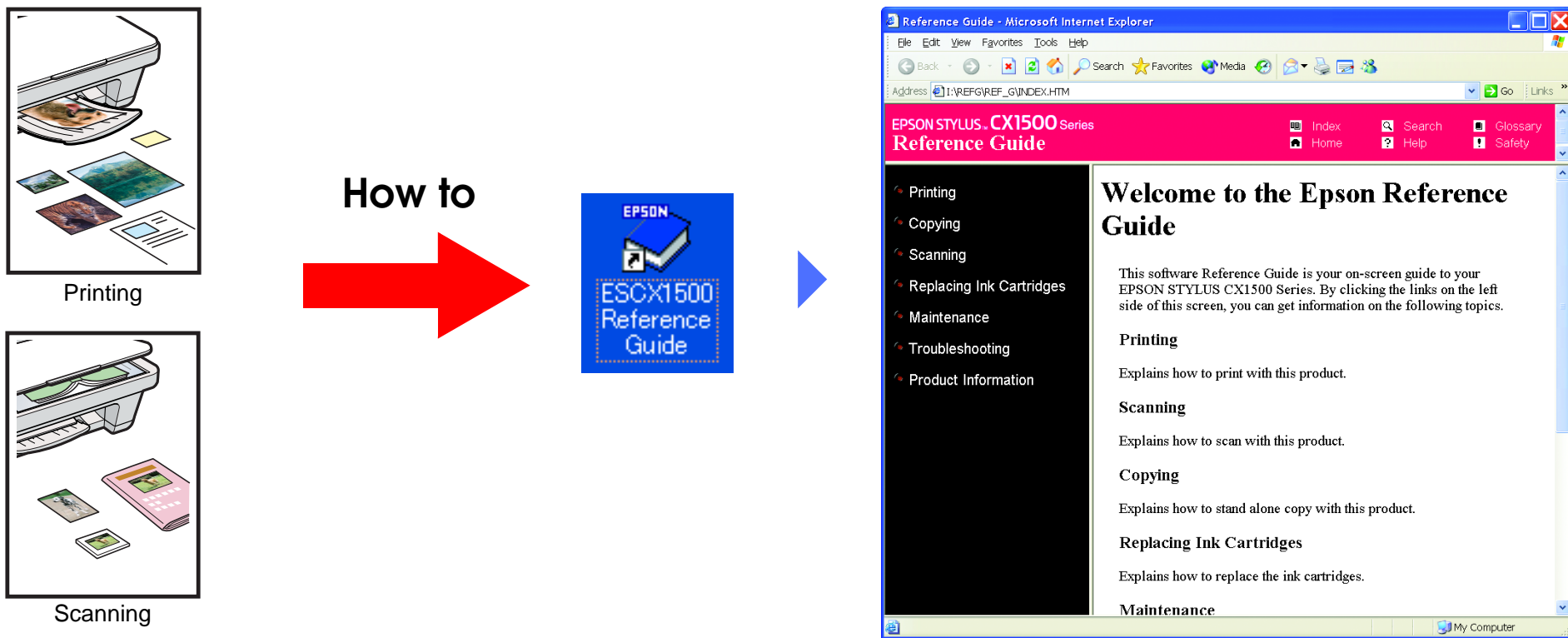
See the other side to copy

## Connecting to a Computer and Installing the Software



❑ If the installer dialog box does not appear, double-click CD-ROM icon.

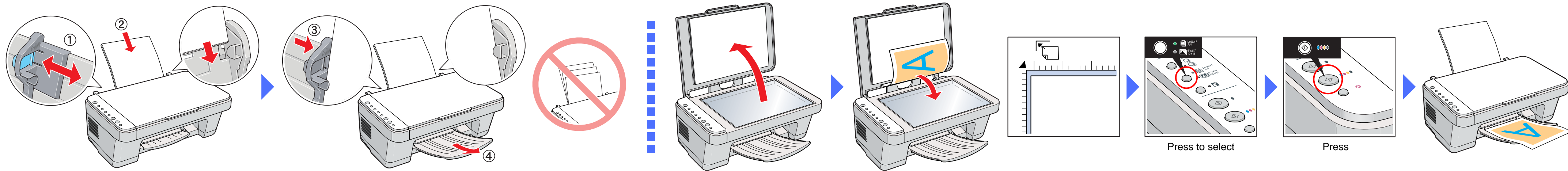
## Using Online Reference Guide





# Copying

## • Making Copies



## • Function

**Number of Copies**

**Paper Size/Type**

**Fit to Page**

**B&W Copying**

**Color Copying**

**Cancel Copying**

## Error Display

Lights	Status	Solutions
	Paper out or Paper jam	Press  Start Color (or B&W) button.
	Ink near end	Prepare a new black ink cartridge (T038) or color ink cartridge (T039). Replace the appropriate ink cartridge.
	Ink out or No Ink	Replace the appropriate ink cartridge. Use the genuine Epson ink cartridges.
	Unknown error	Contact your dealer.

● = on, ● = flashing, ○ = off

## • Replacing Ink Cartridges

