

Impact Dot Matrix Printer

For Windows 7 Users
Software Guide

English

Copyright and Trademark

EPSON and ESC/P are registered trademarks of Seiko Epson Corporation in Japan and other countries/regions. Microsoft, Windows, Windows Vista, and Windows 7 are registered trademarks or a trademark of Microsoft Corporation in the United States and/or other countries.

General Notice: Other product names used herein are for identification purposes only and may be trademarks of their respective owners. Epson disclaims any and all rights in those marks.

The contents of this manual are subject to change without notice.

Printer Software

Operating System Versions

In this manual, the following abbreviations are used.

Windows® refers to Microsoft® Windows 7™, Windows Vista®, XP, and 2000.

- ☐ Windows 7 refers to Windows 7 Home Basic, Windows 7 Home Premium, Windows 7 Professional, Windows 7 Enterprise, and Windows 7 Ultimate.
- ☐ Windows Vista refers to Windows Vista Home Basic Edition, Windows Vista Home Premium Edition, Windows Vista Business Edition, Windows Vista Enterprise Edition, and Windows Vista Ultimate Edition.
- ☐ Windows XP refers to Windows XP Home Edition, Windows XP Professional x64 Edition, and Windows XP Professional.
- ☐ Windows 2000 refers to Windows 2000 Professional.

Note:

The screen shots in this manual are from Windows XP. However, the instructions are the same for Windows 7.

About Your Printer Software

The Epson software includes the printer driver software and EPSON Status Monitor 3.

The printer driver is software that allows your computer to control the printer. You need to install the printer driver so your Windows software applications can take full advantage of the printer's capabilities.

EPSON Status Monitor 3 program allows you to monitor the status of your printer, alerts you when errors occur, and provides you with troubleshooting tips. EPSON Status Monitor 3 is automatically installed when you install the printer driver. If you want to install EPSON Status Monitor 3 later, see "Installing EPSON Status Monitor 3" on page 16 for instructions.

Installing the Printer Driver

Follow the steps below to install the printer driver.

1. Make sure that the printer is off and that Windows is running on your computer.

Note:

You must access Windows as the Administrator.

2. Extract the file that you downloaded from the web site, and open the folder.
3. Double-click the **SETUP.exe** icon (Windows XP/Vista/7 x86 Edition) or **SETUP64.exe** icon (Windows XP/Vista/7 x64 Edition). Then follow the on-screen instructions.
4. When the software license agreement screen appears, read the statement, then click **Agree**.

Note:

*If the following screen appears, click **Continue Anyway**.*



5. When the installation is complete, click **OK**.

Note:

For EPSON LQ-680/LQ-680Pro/LQ-2180 Users:

☐ **Windows XP x64:**

When the OS detects the printer, the in-box driver [EPSON LQ-XXXX ESC/P 2] is automatically installed; however, the driver that comes with the printer is [EPSON LQ-XXXX ESC/P2]. Therefore, when you open the printer driver property or select the printer driver, select the driver [EPSON LQ-XXXX ESC/P2].

Because of the Windows XP x64 specification, be sure not to delete the in-box driver [EPSON LQ-XXXX ESC/P 2].

☐ **Windows Vista and 7:**

In some cases, both the printer driver [EPSON LQ-XXXX ESC/P 2] that comes standard with the operating system and the printer driver [EPSON LQ-XXXX ESC/P2] that is included with the printer are installed. Epson recommend using the printer driver that is included with the printer. Please select [EPSON LQ-XXXX ESC/P2] when printing or opening the Properties screen for the printer driver.

Using the Printer Driver

You can access the printer driver from your Windows applications or from the Start menu.

- ☐ When you access the printer driver from a Windows application, any settings you make apply only to the application you are using. See “Accessing the printer driver from Windows applications” on page 5 for more information.
- ☐ When you access the printer driver from the Start menu, the printer driver settings you make apply to all your applications. See “Accessing the printer driver from the Start menu” on page 7 for more information.

See “Changing the printer driver settings” on page 9 to check and change printer driver settings.

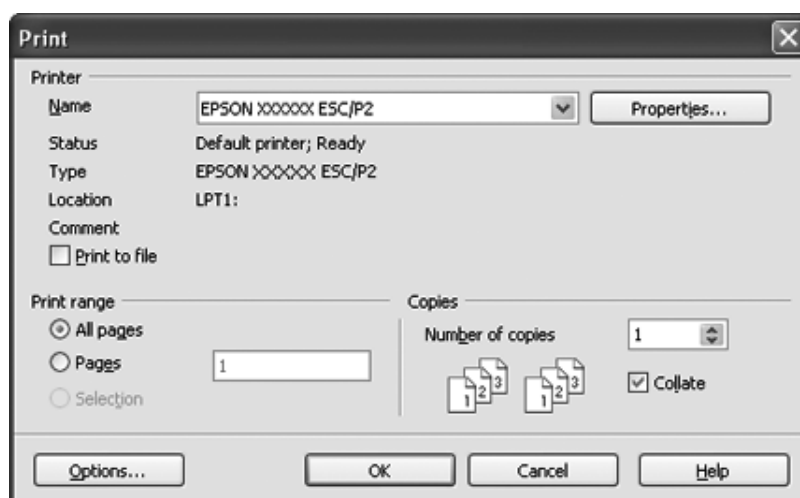
Note:

While many Windows applications override the settings made with the printer driver, some do not, so you must verify that the printer driver settings match your requirements.

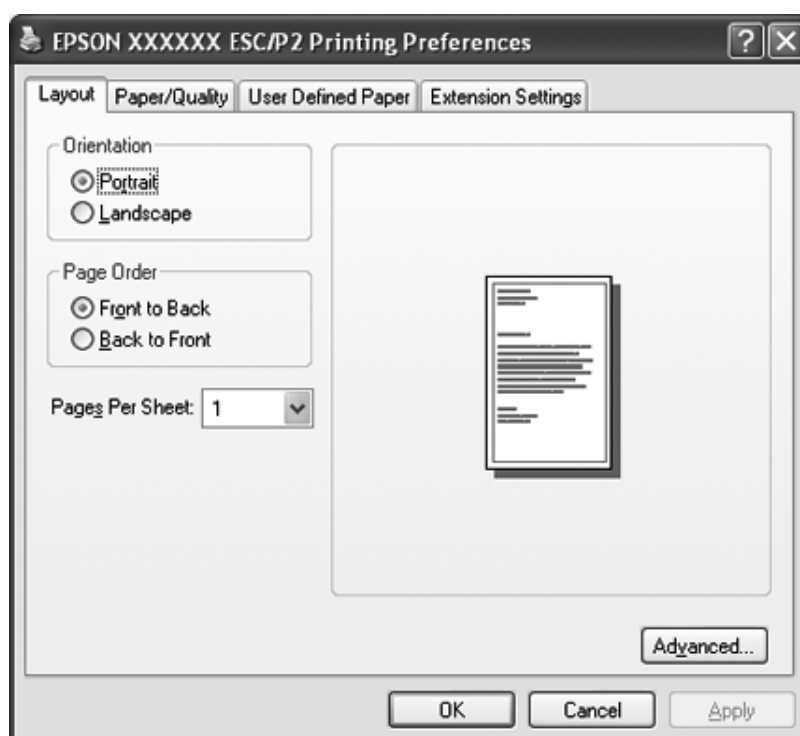
Accessing the printer driver from Windows applications

Follow these steps to access the printer driver from a Windows application:

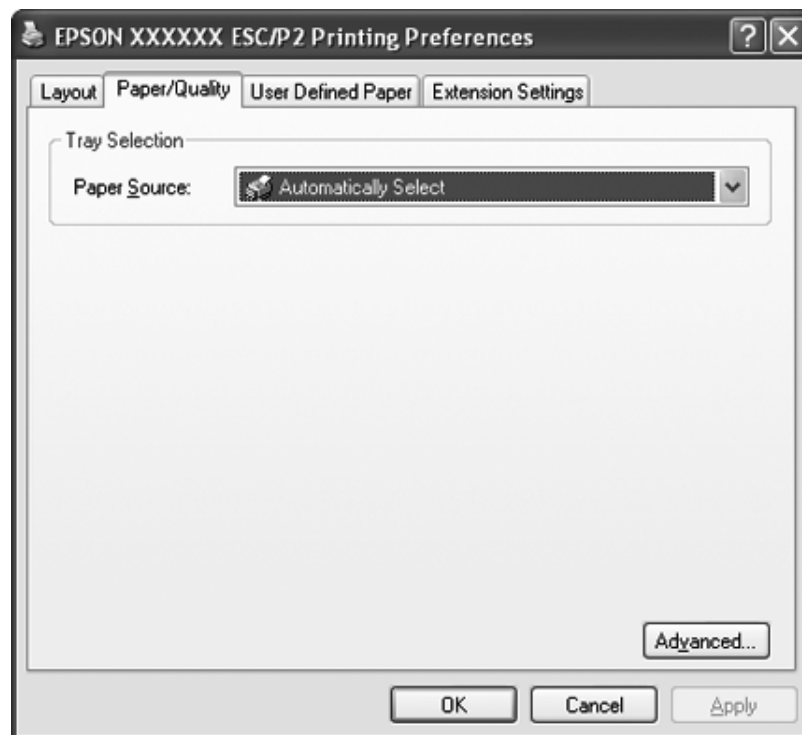
1. Select **Print Setup** or **Print** from the File menu of your application software. In the Print or Print Setup dialog box displayed, make sure that your printer is selected in the Name drop-down list.



2. Click **Printer**, **Setup**, **Properties**, or **Options**. (The button you click depends on your application and you may need to click a combination of these buttons.) The Document Properties window appears, and you see the Layout, Paper/Quality, User Defined Paper and Extension Settings menus. These menus contain the printer driver settings.



3. To view a menu, click the corresponding tab at the top of the window. See “Changing the printer driver settings” on page 9 to change the settings.



Accessing the printer driver from the Start menu

Follow these steps to access the printer driver from the Start menu:

1. For Windows 7:
Click **Start**, and click **Devices and Printers**.

For Windows Vista:

Click **Start**, click **Control Panel**, click **Hardware and Sound**, and then click **Printers**.

For Windows XP Professional edition:

Click **Start**, and click **Printers and Faxes**.

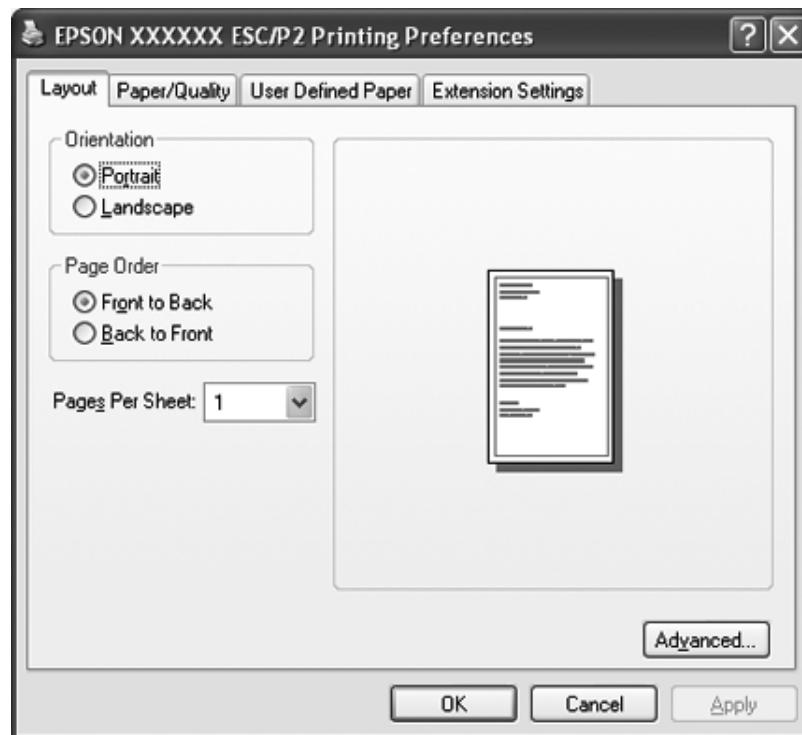
For Windows XP Home edition:

Click **Start**, click **Control Panel** first, and then click **Printers and Faxes**.

For Windows 2000:

Click **Start**, point to **Settings**, and then select **Printers**.

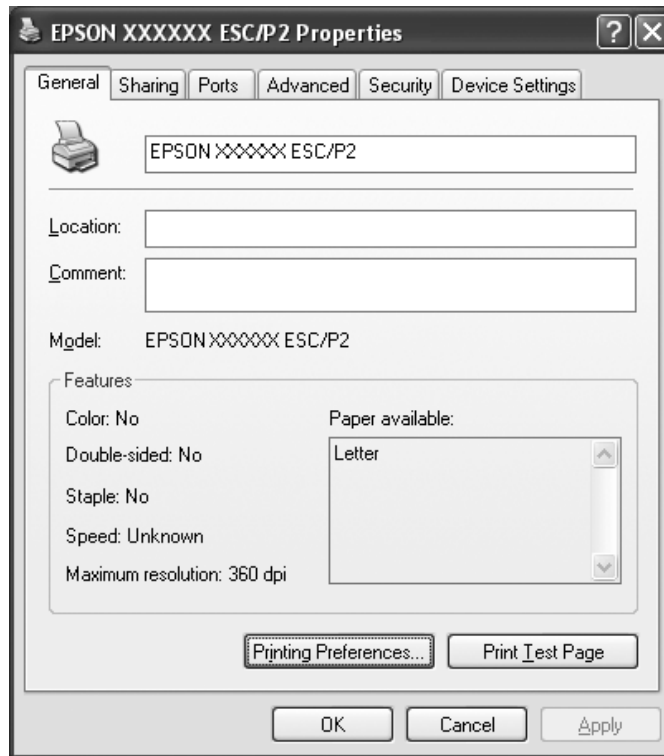
2. Right-click your printer icon, and click **Printing Preferences**. The screen displays the Document Properties window, which contains the Layout, Paper/Quality, User Defined Paper and Extension Settings menus. These menus display the printer driver settings.



When you click **Properties** (Windows Vista, XP, and 2000) or **Printer properties** (Windows 7) in the menu displayed by right-clicking the printer icon, the Properties window appears, which includes menus used to make the printer driver settings.

Note:

Do not click **Properties** though both **Properties** and **Printer properties** are displayed in the menu of Windows 7.

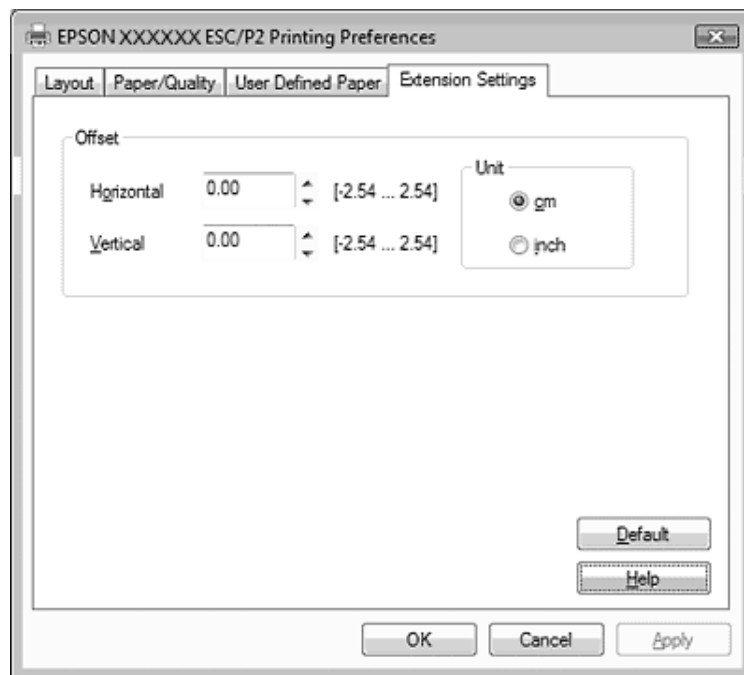


3. To view a menu, click the corresponding tab at the top of the window. See "Printer Driver Settings Overview" on page 10 for information on how to change the settings.

Changing the printer driver settings

Your printer driver has four menus from which you can change the printer driver settings; Layout, Paper/Quality, User Defined Paper, and Extension Settings. You can also change settings on the Utility menu in the printer software. For an overview of the available settings, see "Printer Driver Settings Overview" on page 10. If you are using Windows XP or 2000, you can also view online help by right-clicking items in the driver and selecting **What's this?**.

Click the **Help** button on the Printer Driver screen.



When you finish making your printer driver settings, click **OK** to apply the settings, or click **Cancel** to cancel your changes.

Once you have checked your printer driver settings and changed them if necessary, you are ready to print.

Printer Driver Settings Overview

The following tables show the Windows printer driver settings. Note that not every setting is available in all versions of Windows. For more details, see **Help** for the printer driver.

Printer settings

Note:

Depends on the type of printer, some functions may not be displayed.

Settings	Explanations
Paper Size	Select the size of the paper you want to use. If you do not see your paper size, use the scroll bar to scroll through the list. If your paper size is not included in the list, see "Definition of Custom Paper Size" on page 12 for instructions.
Orientation	Select Portrait or Landscape.
Paper Source	Select the paper source you want to use.
Graphic - Print Quality	Select the printing resolution you want. The higher the resolution you select, the more detailed your printout will be; however, increasing the resolution slows printing.
Halftoning	Select the type of halftoning to use when printing graphics. To let the printer determine the best halftone quality, use Auto Select .
Printer Font Setting	<p>Select a character table group to use. You can select one of three character table groups, Standard, Expanded, and None (Bit Image printing).</p> <p>When Standard or Expanded is selected, the printer uses the device fonts. Expanded includes more fonts than Standard.</p> <p>When None is selected, the printer uses bit map images instead of the device fonts.</p> <p>For details on the fonts which are included in each table, see your printer's documentation.</p>
Page Order*	Select whether to print from front to back or back to front.
Pages Per Sheet*	Select the number of pages that you want to print onto a single page.
Copy Count*	When you select more than one in the Number of copies box, this check box appears and you can select whether to collate the pages of the copies.
Advanced Printing Features*	Select Enable or Disable for the metafile Spooling.
Print Optimizations*	Select Disable when the printer does not use the device fonts and select Enable when the printer uses the device fonts.
Printable Area	<p>If Standard is selected, the normal printable area for Epson impact printers is used.</p> <p>If Maximum is selected, the printer's maximum printable area is used.</p>
Top Margin Priority**	Select which setting for the print-start position is to be used; driver setting or printer setting. For more details, see Help for the printer driver.
Packet Mode**	Ordinarily, there is no need to change this setting. If you change the printer's Packet Mode settings, change this setting to match. If the printer and printer driver settings are different, you may not be able to print correctly. For more details, see Help for the printer driver.
User Defined Paper**	If your paper is not included in the Paper Size drop-down list, you can add the size to the list. For more details, see Help for the printer driver.

Settings	Explanations
Offset**	This setting allows you to offset the image on the page. That is, you can adjust the position of the printed image. If the offset you specify moves a portion of the image out of the printer's printable area, that portion will not be printed.

* For details, see Windows help.

** For Windows 7, Vista, and XP Professional x64 Edition.

Definition of Custom Paper Size

If your paper is not included in the Paper Size drop-down list, you can add the size to the list.

1. For Windows 7:

Click **Start**, and click **Devices and Printers**.

For Windows Vista:

Click **Start**, click **Control Panel**, click **Hardware and Sound**, and then click **Printers**.

For Windows XP Professional x64 Edition:

Click **Start**, and click **Printers and Faxes**.

For Windows XP Professional:

Click **Start**, and click **Printers and Faxes**.

For Windows XP Home Edition:

Click **Start**, and click **Control Panel**, then click **Printers and Faxes**.

For Windows 2000:

Click **Start**, point to **Settings**, and click **Printers**.

2. Right click your printer icon, and click **Printing Preferences**.
3. Select the **User Defined Paper** menu.
4. Enter the paper size in the Paper Size fields.
5. Click **Apply** and then click **OK**.

Note:

For more details, see Help for the printer driver.

Monitoring settings

Settings	Explanations
EPSON Status Monitor 3	You can access EPSON Status Monitor 3 when you click this button. To monitor the printer, make sure the Monitor the printing status check box is selected.
Monitoring Preferences	Click this button to open the Monitoring Preferences dialog box where you can make settings for EPSON Status Monitor 3. See "Setting up EPSON Status Monitor 3" on page 14 for more information.

Using EPSON Status Monitor 3

EPSON Status Monitor 3 allows you to monitor your printer's status, alerts you when printer errors occur, and provides troubleshooting instructions when needed.

EPSON Status Monitor 3 is available when:

- ☐ The printer is connected directly to the host computer via the parallel port [LPT1] or the USB port.
- ☐ Your system is configured to support bidirectional communication.

EPSON Status Monitor 3 is installed when the printer is connected directly and you install the printer driver as described in the *Start Here*. When sharing the printer, be sure to set EPSON Status Monitor 3 so that the shared printer can be monitored on the printer server and clients. See "Setting up EPSON Status Monitor 3" on page 14 and "Setting Up Your Printer on a Network" on page 17.



Caution:

Although you can print to the printer directly connected to the computer in a remote location by using Remote Desktop function of Windows 7, Vista, or XP, communication error may occur.*

** Remote Desktop function: Function which enables a user to access applications or files in a computer connected to the office network from a mobile computer at a remote location.*

Note:

If you are using a computer running Windows 7, Vista, or XP x64 Edition with multiple users are logged on, a communication error message may be displayed when monitoring printers at the same time.

Setting up EPSON Status Monitor 3

Follow these steps to set up EPSON Status Monitor 3:

1. For Windows 7:

Click **Start**, and click **Devices and Printers**.

For Windows Vista:

Click **Start**, click **Control Panel**, click **Hardware and Sound**, and then click **Printers**.

For Windows XP Professional edition:

Click **Start**, and click **Printers and Faxes**.

For Windows XP Home edition:

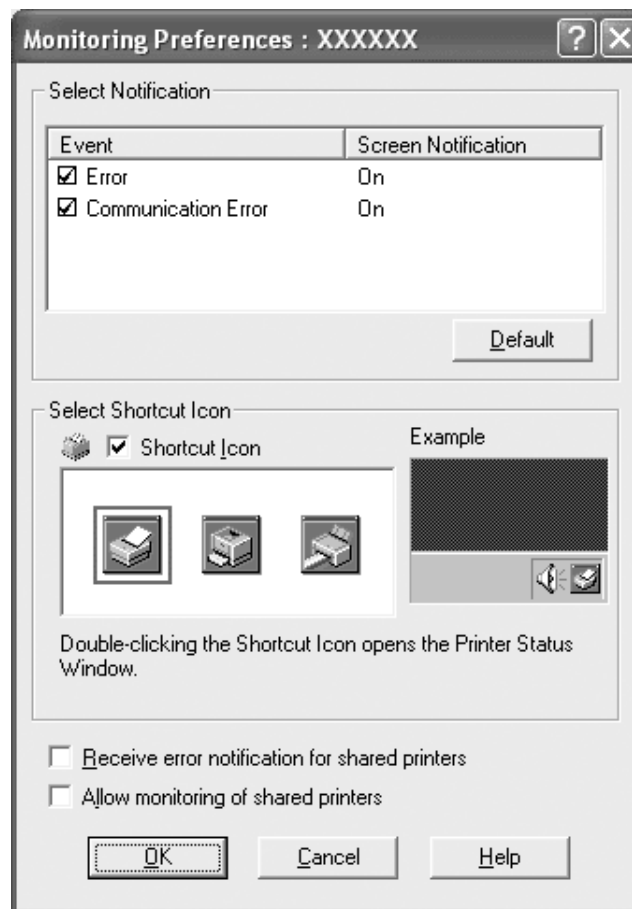
Click **Start**, click **Control Panel** first, and then click **Printers and Faxes**.

For Windows 2000:

Click **Start**, point to **Settings**, and then select **Printers**.

2. Right-click your printer icon, click **Properties** (Windows Vista, XP, and 2000) or **Printer properties** (Windows 7), and then click the **Utility** tab.

- Click the **Monitoring Preferences** button. The Monitoring Preferences dialog box appears.



- The following settings are available:

Select Notification	Displays the error item check box On/Off status. Turn on this check box to display the selected error notification.
Select Shortcut Icon	The selected icon is displayed on the taskbar. The setting's example is shown on the right window. By clicking the shortcut icon, you can access the Monitoring Preferences dialog box easily.
Receive error notification for shared printers	Error notification for a shared printer can be received when this check box is selected.
Allow monitoring of shared printer	When this check box is selected, a shared printer can be monitored by other PCs. Note: You must access Windows as the Administrator.

Note:

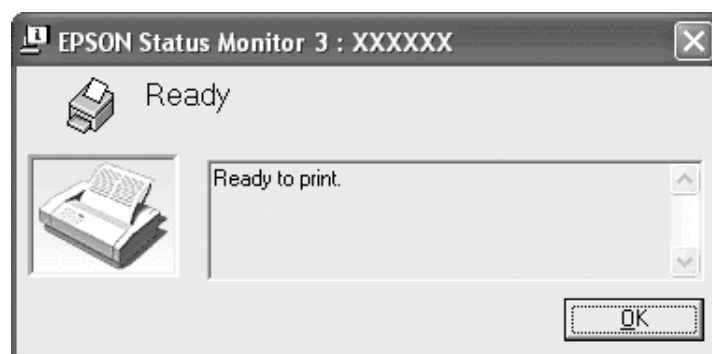
Click the **Default** button to revert all items to the default settings.

Accessing EPSON Status Monitor 3

Do one of the following to access EPSON Status Monitor 3;

- ☐ Double-click the printer-shaped shortcut icon on the taskbar. To add a shortcut icon to the taskbar, go to the Utility menu and follow the instructions.
- ☐ Open the Utility menu, then click the **EPSON Status Monitor 3** icon. To find out how to open the Utility menu, See “Using the Printer Driver” on page 5.

When you access EPSON Status Monitor 3 as described above, the following printer status window appears.



You can view printer status information in this window.

Note:

*It might not be possible to retrieve the printer status during printing. In this situation, click the **EPSON Status Monitor3** button in the Utility tab, and use the printer with the status window left open.*

Installing EPSON Status Monitor 3

Follow the steps below to install EPSON Status Monitor 3 that you downloaded from the EPSON web site.

1. Make sure that the printer is off and that Windows is running on your computer.
2. Extract the file that you downloaded from the web site, and open the folder.
3. Double-click the **STMSETUP.exe** icon. Then follow the on-screen instructions.
4. When the software license agreement screen appears, read the statement, then click **Agree**.
5. When the installation is complete, click **OK**.

Setting Up Your Printer on a Network

Sharing the printer

This section describes how to share the printer on a standard Windows network.

The computers on a network can share a printer that is directly connected to one of them. The computer that is directly connected to the printer is the printer server, and the other computers are the clients which need permission to share the printer with the printer server. The clients share the printer via the printer server.

According to the versions of Windows OS and your access rights on the network, perform the appropriate settings of the printer server and clients.

See “Setting up your printer as a shared printer” on page 18.

See “Setting for the clients” on page 19.

Note:

- ❑ *To setup a shared printer, the printer driver needs to be installed on all server and client computers that will use the printer.*
- ❑ *When sharing the printer, be sure to set EPSON Status Monitor 3 so that the shared printer can be monitored on the printer server and clients. See “Setting up EPSON Status Monitor 3” on page 14.*
- ❑ *When connecting to a Windows XP shared printer, error and warning notifications do not appear during printing. Installing Windows XP Service Pack 1 or later will solve this problem.*
- ❑ *When connecting to a shared printer beyond a router, error and warning notification for shared printers during printing is not available in some cases because of the router’s settings.*
- ❑ *The printer server and clients should be set on the same network system, and they should be under the same network management beforehand.*
- ❑ *The on-screen displays on the following pages may differ depending on the version of Windows OS.*

Setting up your printer as a shared printer

Follow these steps to set the printer server.

Note:

You must access as the Administrators of the local machine.

1. For a Windows 7 printer server:
Click **Start**, and click **Devices and Printers**.

For a Windows Vista printer server:

Click **Start**, click **Control Panel**, click **Hardware and Sound**, and then click **Printers**.

For a Windows XP Professional printer server:

Click **Start**, and click **Printers and Faxes**.

For Windows XP Home Edition printer server:

Click **Start**, click **Control panel**, then click **Printers and Faxes**.

For a Windows 2000 printer server:

Click **Start**, point to **Settings**, and click **Printers**.

2. For Windows 7:
Right-click your printer icon, click **Printer Properties**, and then click the **Sharing** tab in the appearing screen.

For Windows Vista, XP, or 2000:

Right-click your printer icon, and click **Sharing** in the menu that appears.

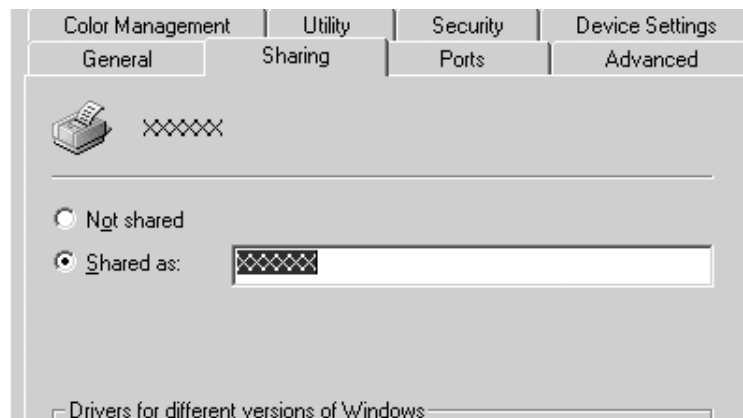
For Windows XP:

If the following menu appears, click either **Network Setup Wizard** or **If you understand the security risks but want to share printers without running the wizard, click here**.

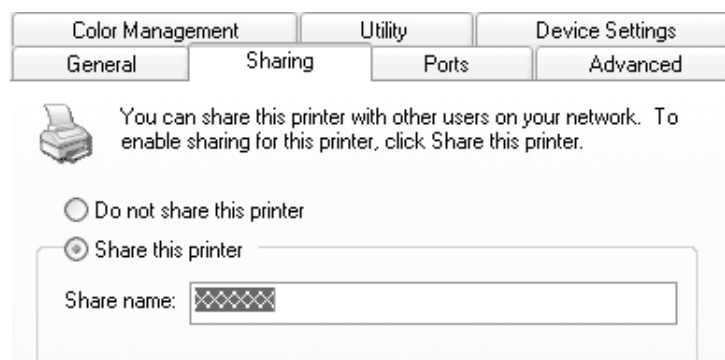
In either case, follow the on-screen instructions.



3. For a Windows 2000 printer server:
Select **Shared as**, then type the name in the Share name box and click **OK**.



- For a Windows 7, Windows Vista, or XP printer server:
Select **Share this printer**, then type the name in the Share name box and click **OK**.



Note:

- ☐ Do not use spaces or hyphens for the share name, or an error may occur.
- ☐ In Windows 7 or Vista, you cannot select **share this printer** until you click the **Change sharing options** button.

You need to set the client computers so that they can use the printer on a network. See the following pages for details:

See "Setting for the clients" on page 19.

Setting for the clients

This section describes how to install the printer driver by accessing the shared printer on a network.

Note:

- ❑ *To share the printer on a Windows network, you need to set the printer server. For details, see “Setting up your printer as a shared printer” on page 18.*
- ❑ *This section describes how to access the shared printer on a standard network system using the server (Microsoft workgroup). If you cannot access the shared printer due to the network system, ask the administrator of the network for assistance.*
- ❑ *When you want to use the EPSON Status Monitor 3 at clients, you have to install both of the printer driver and the EPSON Status Monitor 3 that you downloaded from the EPSON web site.*
- ❑ *If the printer drivers are not already installed on the client, please install them before performing these settings.*

1. On the Windows **Start** menu, open the **Device and Printers**, **Printers** or **Printers and Faxes**.

For Windows 7 clients:

Click **Start**, and click **Devices and Printers**.

For Windows Vista clients:

Click **Start**, click **Control Panel**, click **Hardware and Sound**, and then click **Printers**.

Windows XP Professional clients:

Click **Start** and then click **Printers and Faxes**.

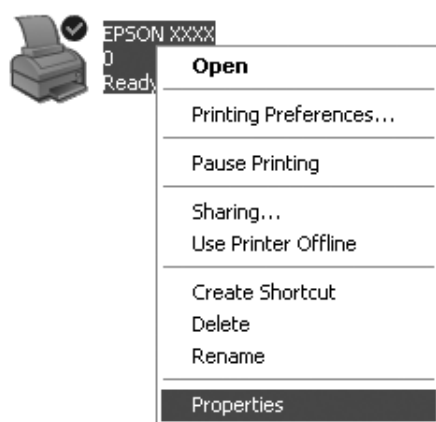
Windows XP Home Edition clients:

Click **Start**, click **Control Panel**, and then click **Printers and Faxes**.

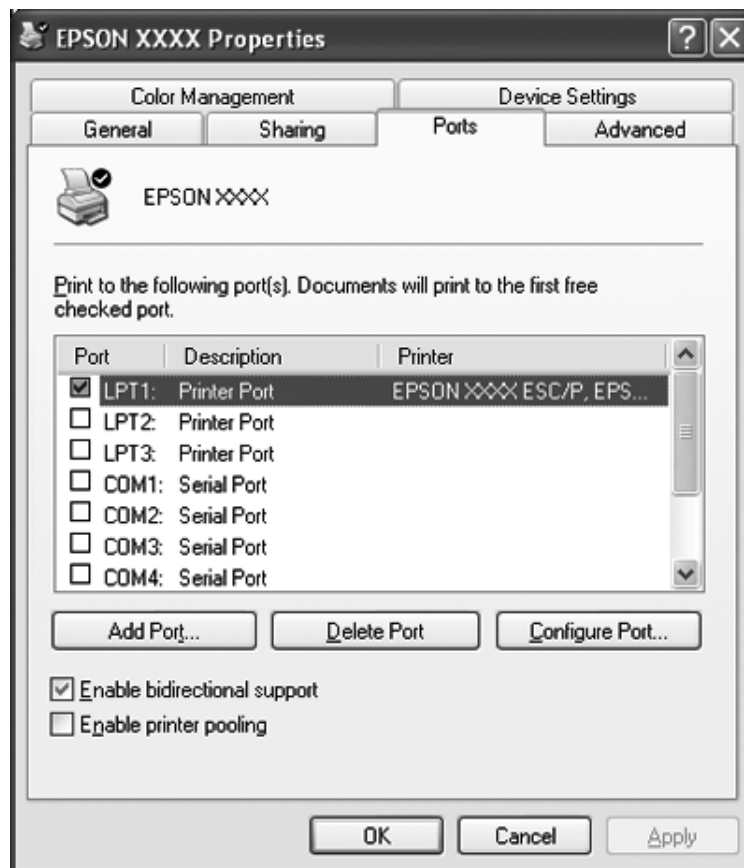
For Windows 2000 clients:

Click **Start**, click **Settings**, and then click **Printers**.

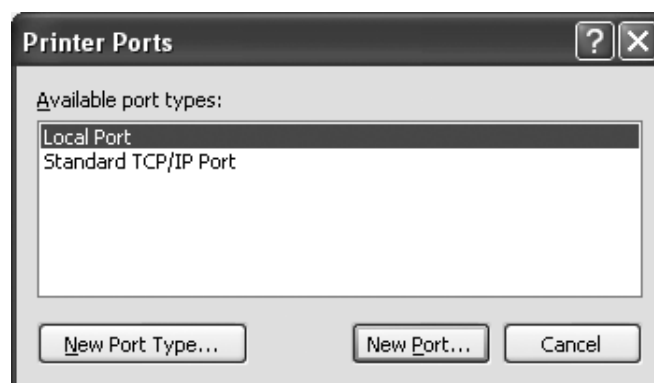
2. Right-click the icon for the printer you wish to change the settings for, and then click **Properties** (Windows Vista, XP and 2000) or **Printer properties** (Windows 7).



3. Click the **Ports** tab and then click **Add Port**.

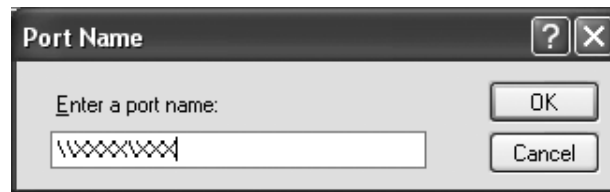


4. When the **Printer Ports** window appears, select **Local Port**, and then click **New Port**.



5. Enter the following information for the port name and then click **OK**.

\\Name of computer connected to the target printer\name of shared printer



6. After returning to the **Printer Ports** window, click **Close**.
7. Check that the name you entered for the port has been added and selected, and then click **Close**.

Canceling Printing

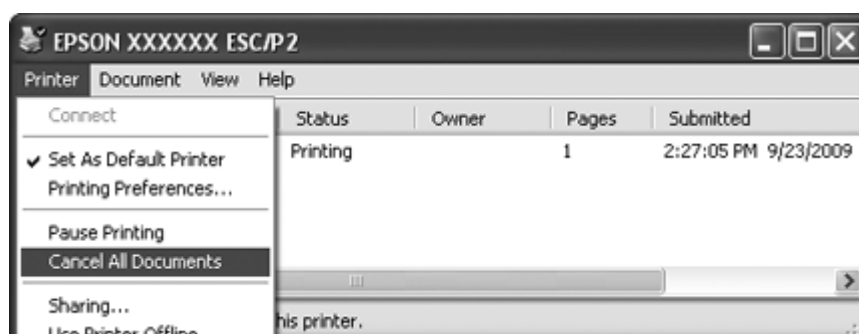
If the printouts are not what you expected and display incorrect or garbled characters or images, you may need to cancel printing. When the printer icon is displayed on the taskbar, follow the instructions below to cancel printing.

1. Double-click the printer icon on the task bar.



2. When canceling all printing documents, select **Cancel All Documents** on the Printer menu.

When canceling a specified document, select a document you want to cancel and select **Cancel** on the Document menu.



The printing job is canceled.

Uninstalling the Printer Software

When you wish to reinstall or upgrade the printer driver, uninstall the printer driver that has been installed already.

Note:

When uninstalling EPSON Status Monitor 3 from a multi-user Windows XP or 2000 environment, remove the shortcut icon from all clients before uninstalling. You can remove the icon by clearing the Shortcut Icon check box in the Monitoring Preferences dialog box.

Uninstalling the printer driver and EPSON Status Monitor 3

1. Quit all applications.
2. For Windows 7, Vista, or XP:
Click **Start**, and then select **Control Panel**.

For Windows 2000:

Click **Start**, point to **Settings**, and click **Control Panel**.

3. Click **Uninstall a program** (Windows 7 or Vista) or double-click the **Add or Remove Programs** icon (Windows XP or 2000).

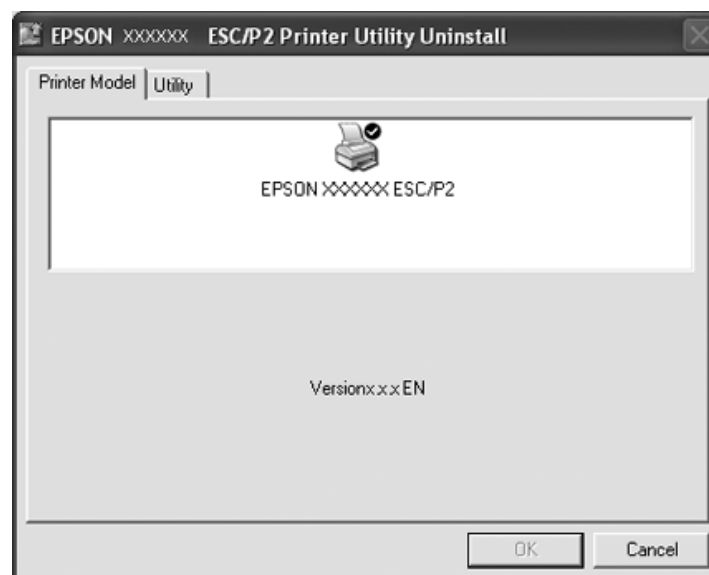


Add or Remove Programs

4. Click **Change or Remove Programs**, select the **EPSON XXXXXX ESC/P2 Printer Utility Uninstall**, then click **Uninstall/Change** (Windows 7) or **Change/Remove** (Windows Vista, XP, or 2000).



5. Click the **Printer Model** tab, select the icon of the printer you want to uninstall, then click **OK**.



Note:

Make sure that nothing is selected in the **Printer Model** tab. Open **Utility** tab and select **EPSON Status Monitor 3(for EPSON XXXXXX ESC/P2)** and click **OK**. You can uninstall only the EPSON Status Monitor 3.

6. Follow the on-screen instructions.