

Impact Dot Matrix Printer

For Users of driver included in Windows 7

EPSON Status Monitor User's Guide

English

Manual Contents

This manual outlines the installation and setting procedures for EPSON Status Monitor used with the Windows 7 OS driver supplied for the EPSON impact dot matrix printer.

For other Windows operating systems or drivers, see the manual supplied with your printer.

EPSON Status Monitor is a utility for monitoring the status of the printer and displaying on-screen error messages and so on.

Copyright and Trademark

EPSON and ESC/P are registered trademarks of Seiko Epson Corporation in Japan and other countries/regions. Microsoft, Windows, and Windows 7 are registered trademarks or a trademark of Microsoft Corporation in the United States and/or other countries.

General Notice: Other product names used herein are for identification purposes only and may be trademarks of their respective owners. Epson disclaims any and all rights in those marks.

Installing EPSON Status Monitor

Follow the steps below to install EPSON Status Monitor downloaded from the EPSON Web site.

Note:

- ☐ You can install EPSON Status Monitor before or after installing the printer driver.

For information on installing the printer driver, see "Notes for Windows 7 Users" supplied with the printer.

- ☐ EPSON Status Monitor 3 is available when:

- The printer is connected directly to the host computer via the parallel port [LPT1] or the USB port.
- Your system is configured to support bidirectional communication.

- ☐ You must access Windows as the Administrator.

1. Extract the file you downloaded from the EPSON Web site, and then open the folder.
2. Double-click the **STMSSetup.exe** icon.
3. When the following screen appears, click **OK**.



4. When the software license agreement screen appears, read the statement, and click **Accept**. Follow the on-screen instructions.
5. The EPSON Status Monitor Settings dialog box appears.

If the printer driver is already installed on your computer, click **Update monitored printer(s)**.



If you do not want to install the printer driver, go straight to step “7” without clicking **Update monitored printer(s)**. After EPSON Status Monitor installation is complete, install the printer driver and then make **Update monitored printer(s)** settings.

See “Updating Monitored Printers” on page 7.

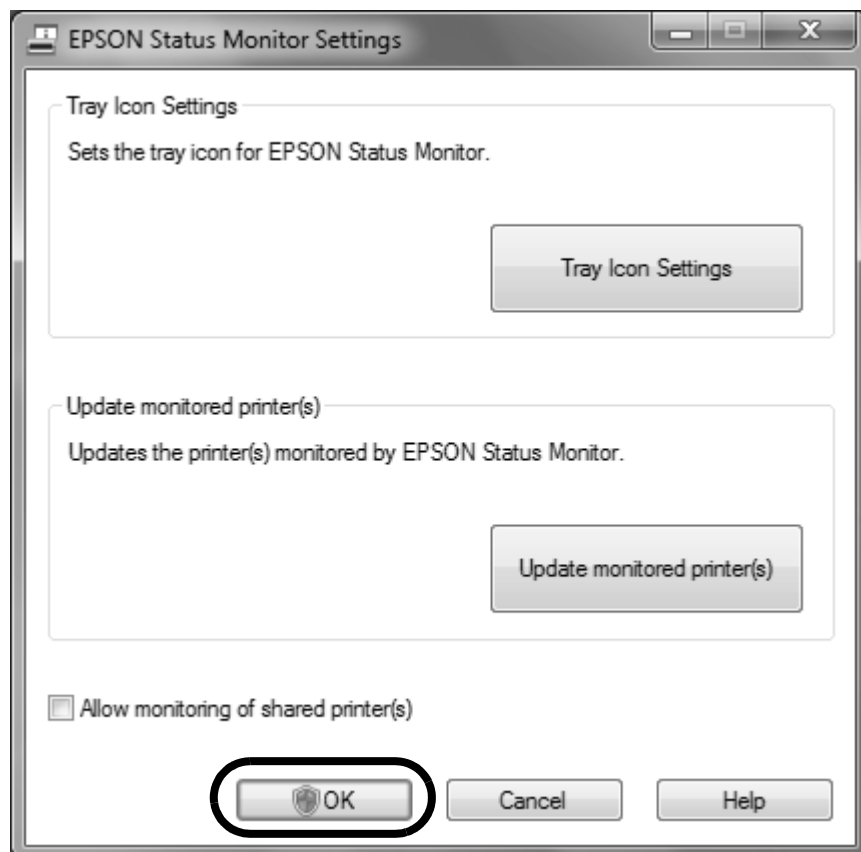
See *Notes for Windows 7 Users* supplied with your printer for more information on installing the printer driver.

6. Select the printer you want to monitor, and then click **OK**.

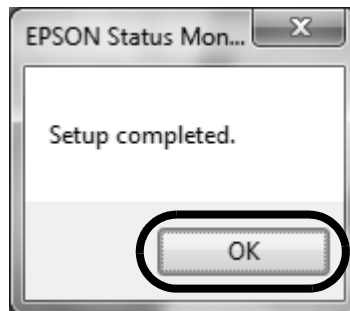


When the **Select All** check box is selected, you can select all displayed printers.

7. On the EPSON Status Monitor Settings screen, click **OK**.

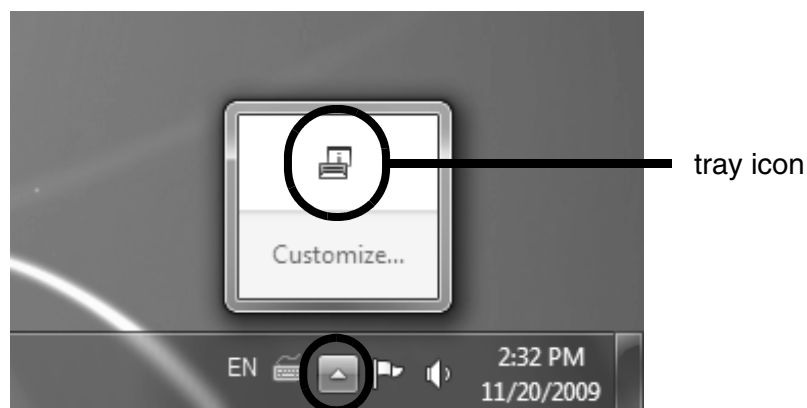


8. When the following screen appears, click **OK**.



Note: Tray icon display

- ❑ When EPSON Status Monitor is installed, a tray icon that allows you to easily launch EPSON Status Monitor and modify settings is added to the taskbar.
- ❑ Click the taskbar to display the tray icon.



You can now monitor your printer. See “Monitoring Printer Status” on page 10.

Note:

If the printer driver is not installed, install the printer driver and then make [Update monitored printer(s)] settings. See “Updating Monitored Printers” on page 7.

Updating Monitored Printers

You can add or remove printers being monitored by EPSON Status Monitor at any time.

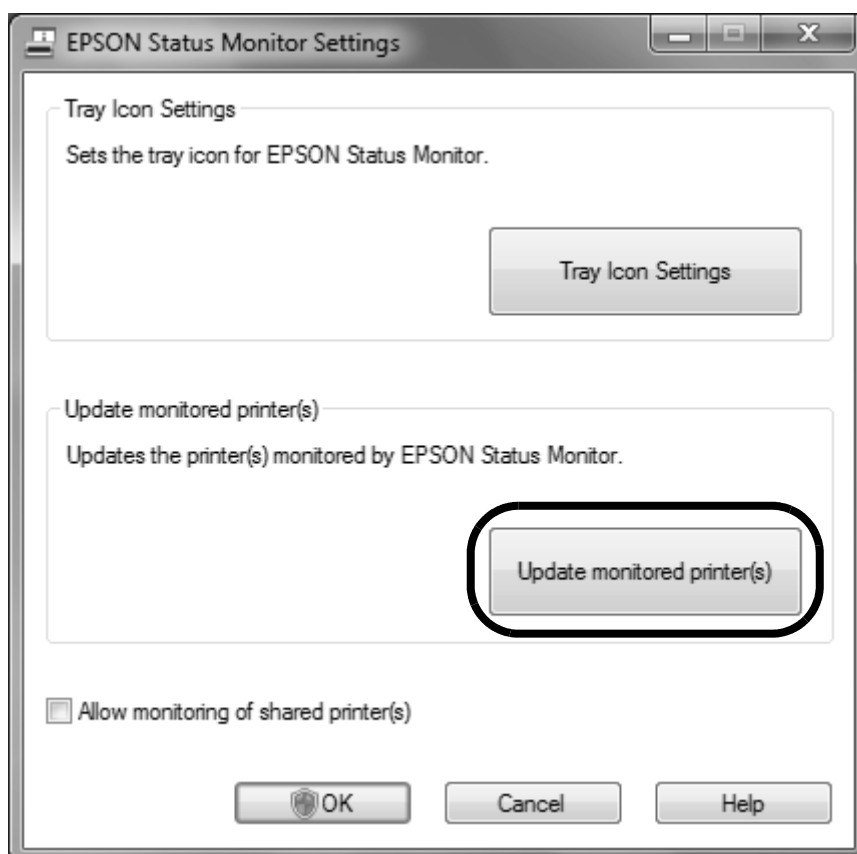
Note:

- ❑ *Make settings as a user with Administrator authority.*
- ❑ *When EPSON Status Monitor is being used by multiple users, you need to make settings for each user.*

1. Open the Update monitored printer(s) dialog box using either of the following methods.

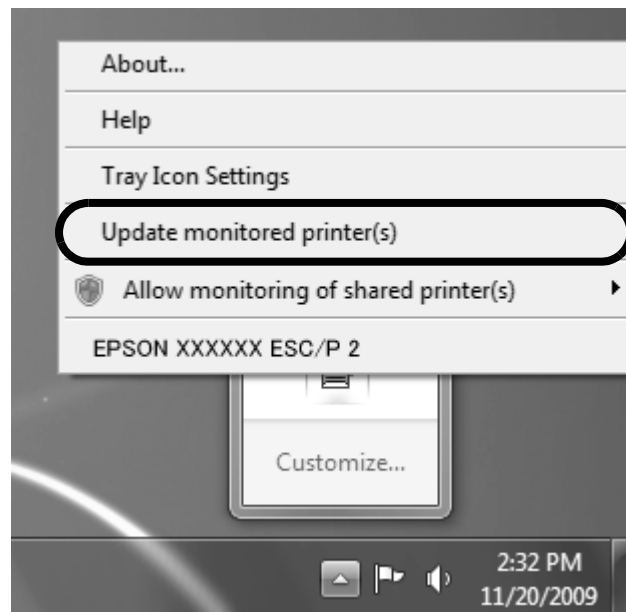
(Method 1)

- 1) Click **Start, All Programs, EPSON, Status Monitor for Impact Dot Matrix Printer**, and then click **EPSON Status Monitor Settings**.
- 2) Click **Update monitored printer(s)** in the EPSON Status Monitor Settings dialog box.



(Method 2)

Right-click the tray icon, and then click **Update monitored printer(s)**.



2. Select the printer you want to monitor, and then click **OK**.

When the **Select All** check box is selected, you can select all displayed printers.



Note:

*If you do not want to monitor a printer, clear the selection and then click **OK**.*

You can now monitor the selected printer.

Monitoring Printer Status

To monitor the printer status, access EPSON Status Monitor using either of the following methods.

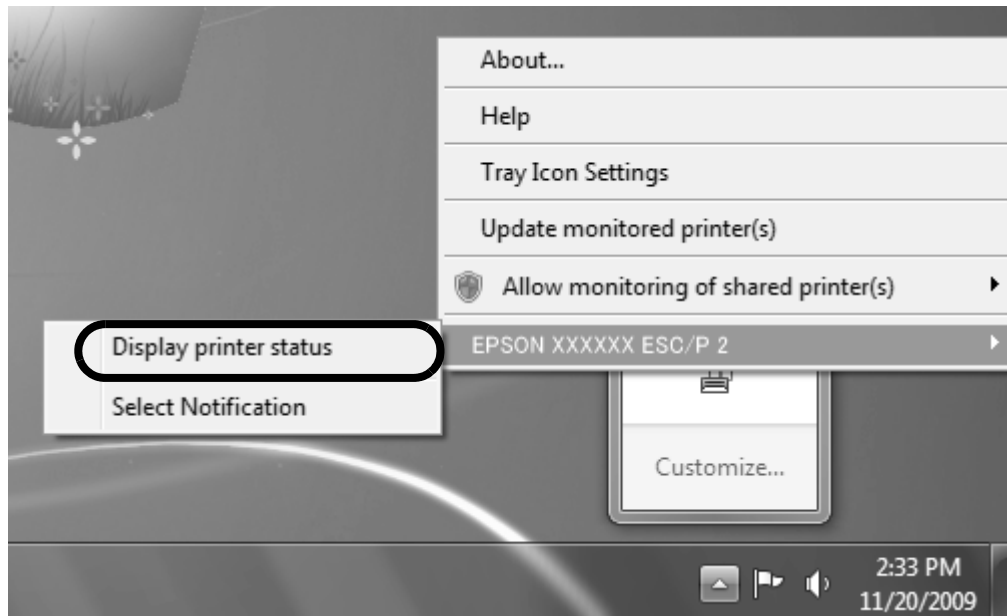
(Method 1)

1. Click **Start**, and click **Devices and Printers** and then right-click the icon for the printer you wish to monitoring for, and then click **Printer properties**.
2. Click the **EPSON Status Monitor** icon on the **Utility** tab.



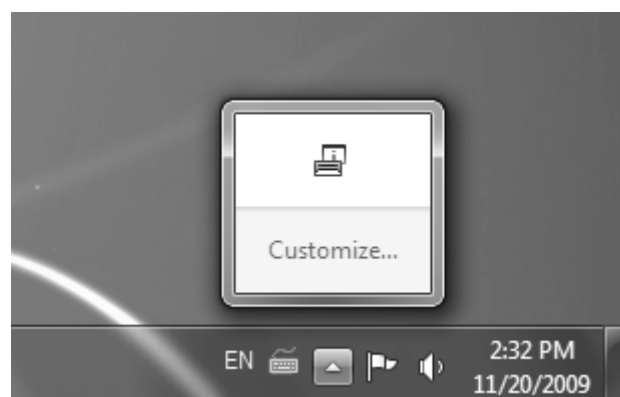
(Method 2)

Right-click the tray icon, click the printer name that you want to monitor, and then click **Display printer status**.



(Method 3)

When the printer you want to display is associated with the tray icon, double-click the tray icon on the taskbar. See “Setting up the tray icon” on page 16



Next, set the monitoring conditions for EPSON Status Monitor.

Monitoring Settings

Set EPSON Status Monitor functions. You can make settings such as what type of status to display on the screen, and whether or not to monitor shared printers on a network.

Selecting error notifications

You can select whether or not to be notified when an error status occurs. When one of the selected errors occurs, a popup window is displayed explaining how to handle the error.

Note:

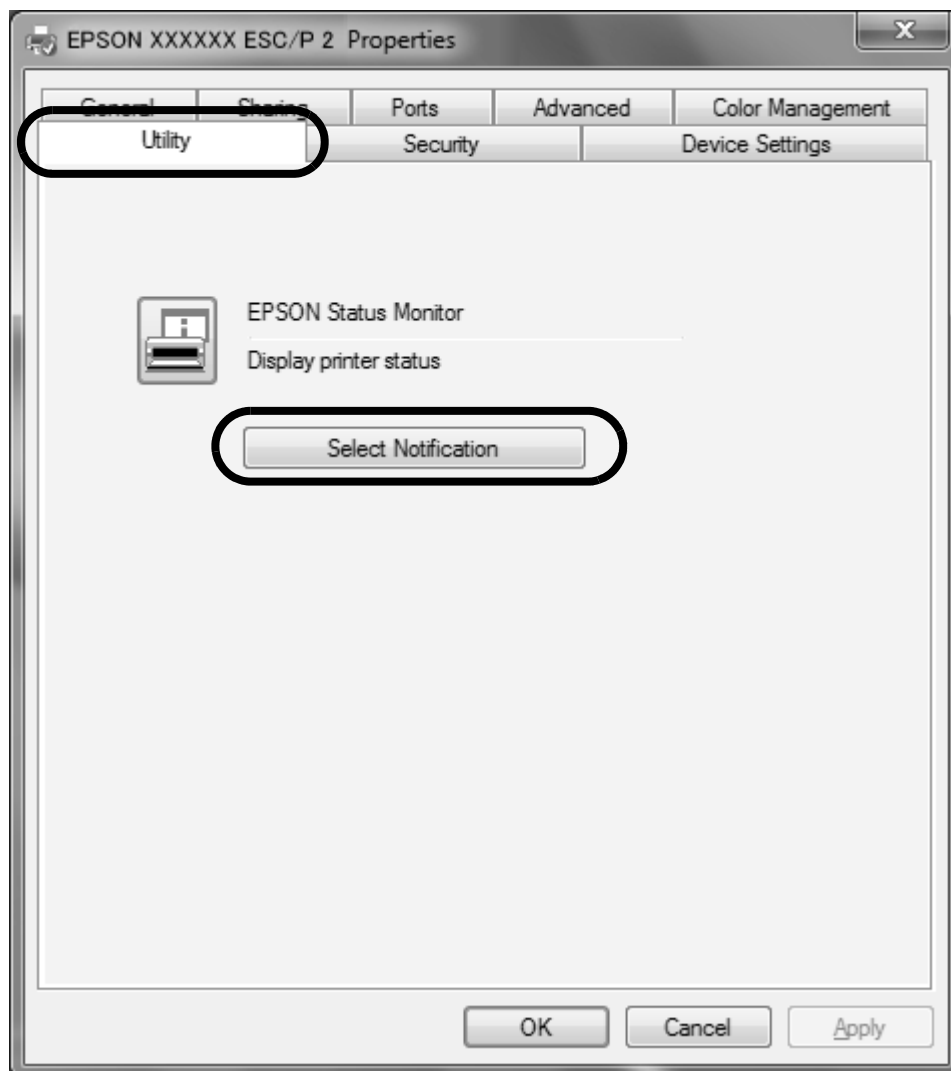
When EPSON Status Monitor is being used by multiple users, you need to make settings for each user.

1. Access the Monitoring Preferences dialog box by using either of the following methods.

(Method 1)

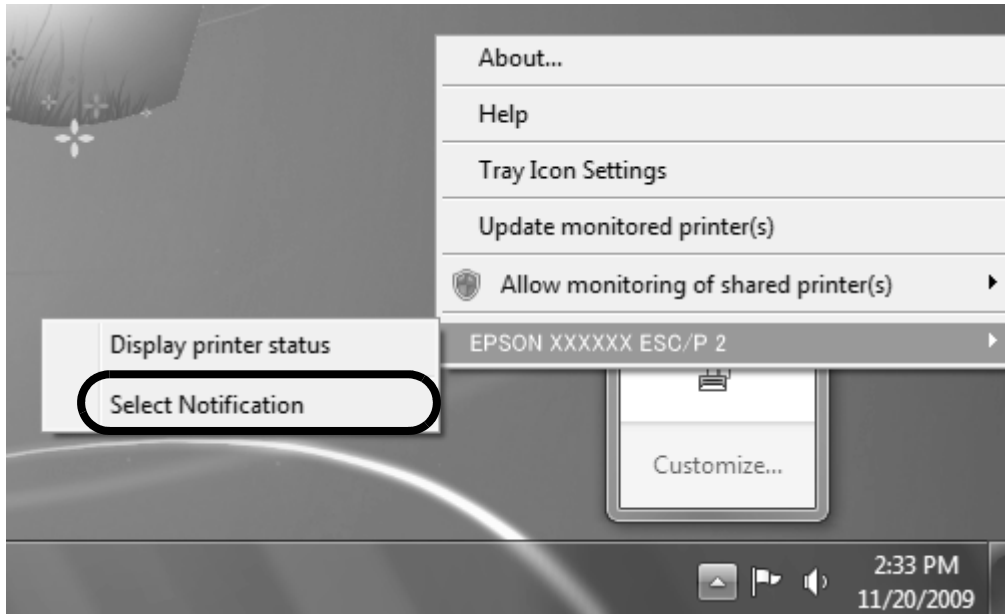
- 1) Click **Start**, and click **Devices and Printers** and then right-click the icon for the printer you wish to monitoring for, and then click **Printer properties**.

- 2) Click the **Select Notification** button on the **Utility** tab.

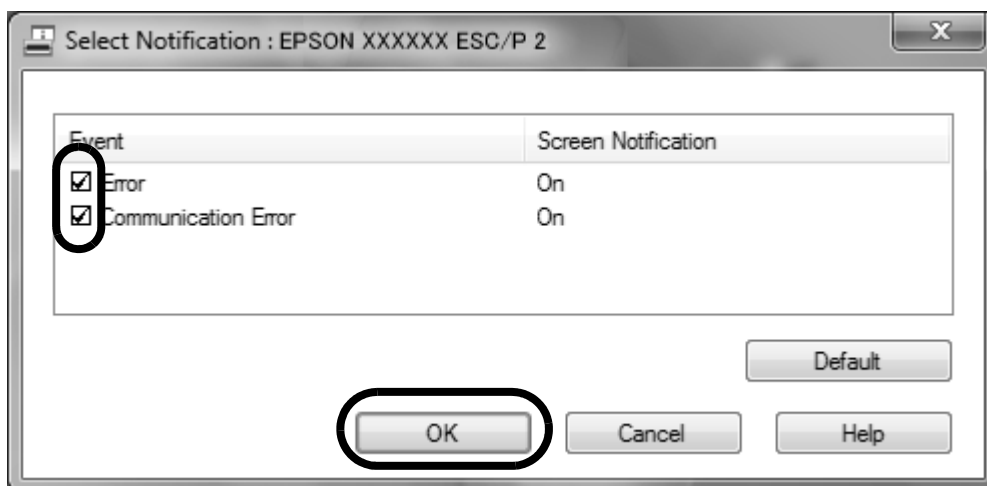


(Method 2)

Right-click the tray icon, click the printer name you want to set, and then click **Select Notification**.



2. Select the check box for the errors for which you want to be notified, and then click **OK**.



Note:

Click the **Default** button to revert to the default settings.

Monitoring shared printers

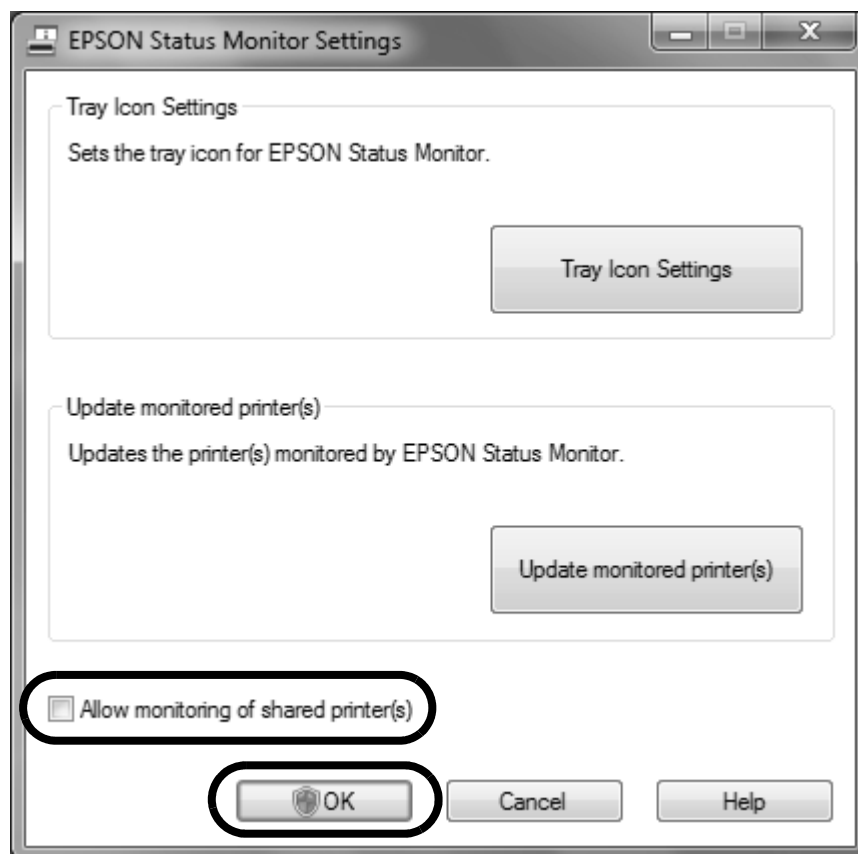
When this check box is selected, a shared printer can be monitored by other PCs. Set up by using either of the following methods.

Note:

- ☐ *Make settings as a user with Administrator authority.*
- ☐ *When EPSON Status Monitor is being used by multiple users, you need to make settings for each user.*

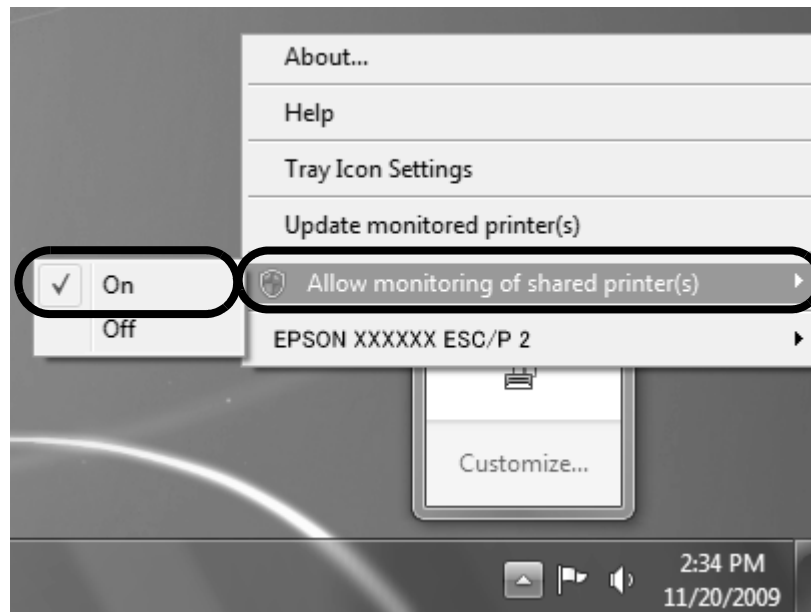
(Method 1)

1. Click **Start, All Programs, EPSON, Status Monitor for Impact Dot Matrix Printer**, and then click **EPSON Status Monitor Settings**.
2. Select **Allow monitoring of shared printer(s)** from the EPSON Status Monitor Settings dialog box, and then click **OK**.



(Method 2)

Right-click the tray icon, select **Allow monitoring of shared printer(s)**, and then click **On**.



Setting up the tray icon

Set which printer status is displayed when you double-click the tray icon.

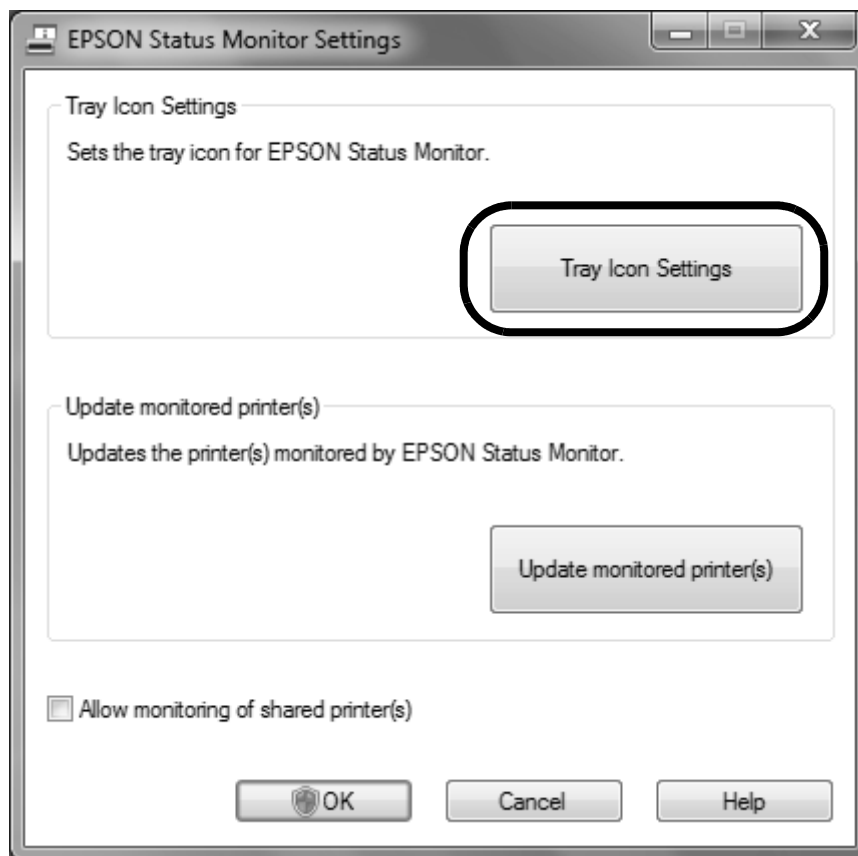
Note:

- ☐ *Make settings as a user with Administrator authority.*
 - ☐ *When EPSON Status Monitor is being used by multiple users, you need to make settings for each user.*
1. Open the EPSON Status Monitor Settings dialog box by using either of the following methods.

(Method 1)

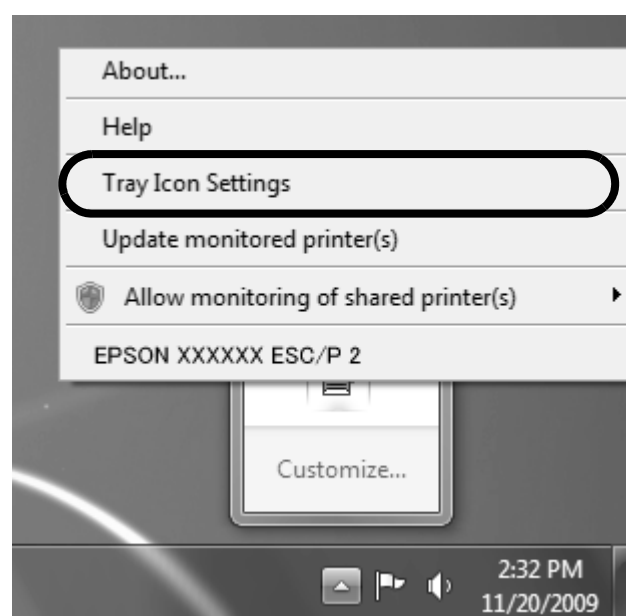
- 1) Click **Start, All Programs, EPSON, Status Monitor for Impact Dot Matrix Printer**, and then click **EPSON Status Monitor Settings**.

- 2) Click **Tray Icon Settings** in the EPSON Status Monitor Settings dialog box.



(Method2)

Right-click the tray icon, and then click **Tray Icon Settings**.



2. Select the printer name you want to monitor, and then click **OK**.

